

SCOVILL

Dritz Stitchery

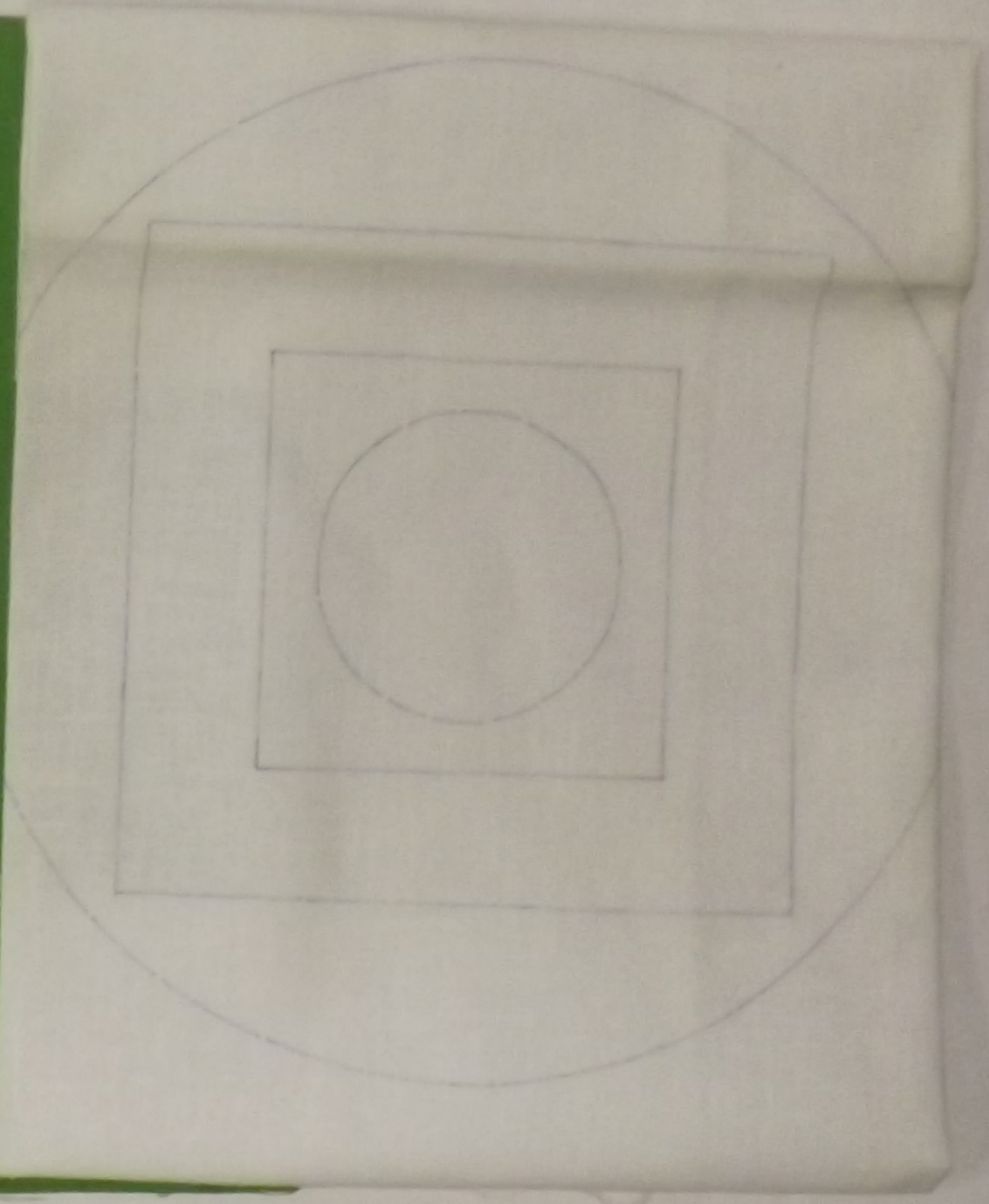
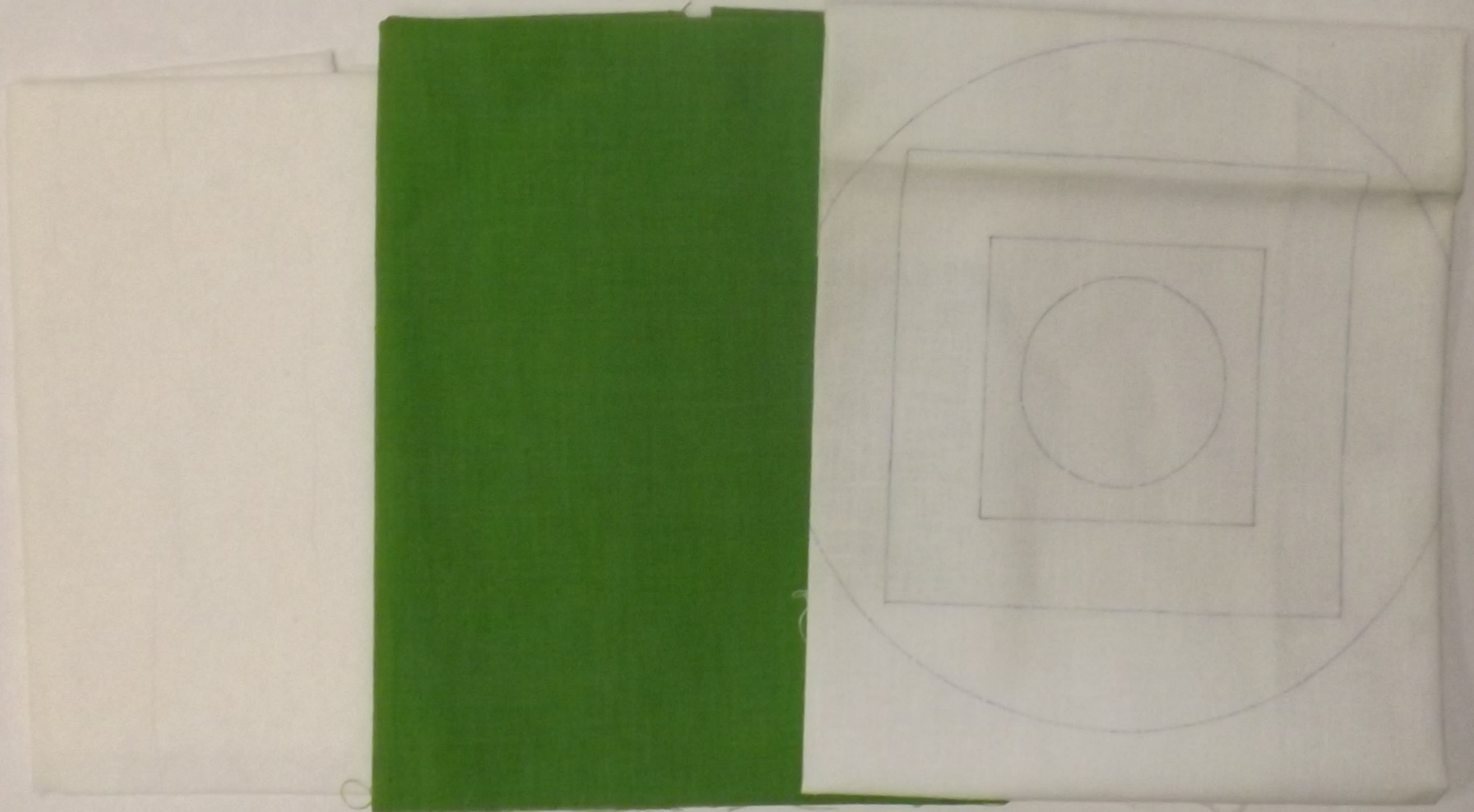
CUT-AWAY APPLIQUE PILLOW KIT

Decorate with these bold designs. Their quilted look is easy to do. Just cut away and stitch down. A new look for an ancient craft.



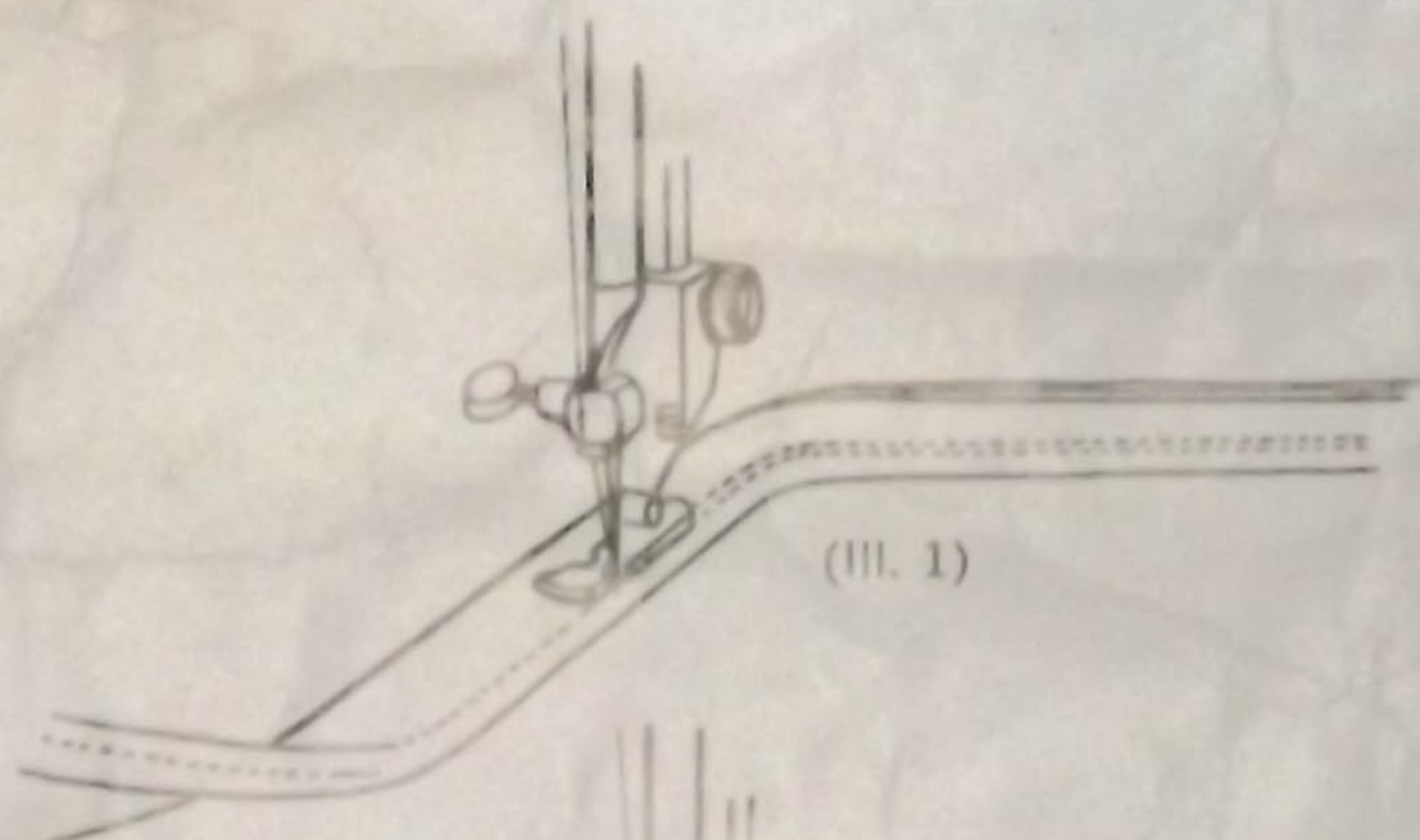
"In The Round" Series

KIT CONTAINS: 17 1/2 x 17 1/2" white top layer of fabric pre-cutted into pieces, colors, under layer of fabric, 1/8" 15 mm 2" wide, 8mm, 1/4" blue bias all in 50% Cotton, 70% Polyester, 30% Rayon, 20% Spine of 100% cotton sewing thread • 60" of all purpose quilting • 13" of fusible interfacing • 8 yds. of 43" Poly 100% cotton thread • 80" of 60" wide extra heavy foam • one 16" chisel point iron • one #17 rotary needle • complete instructions

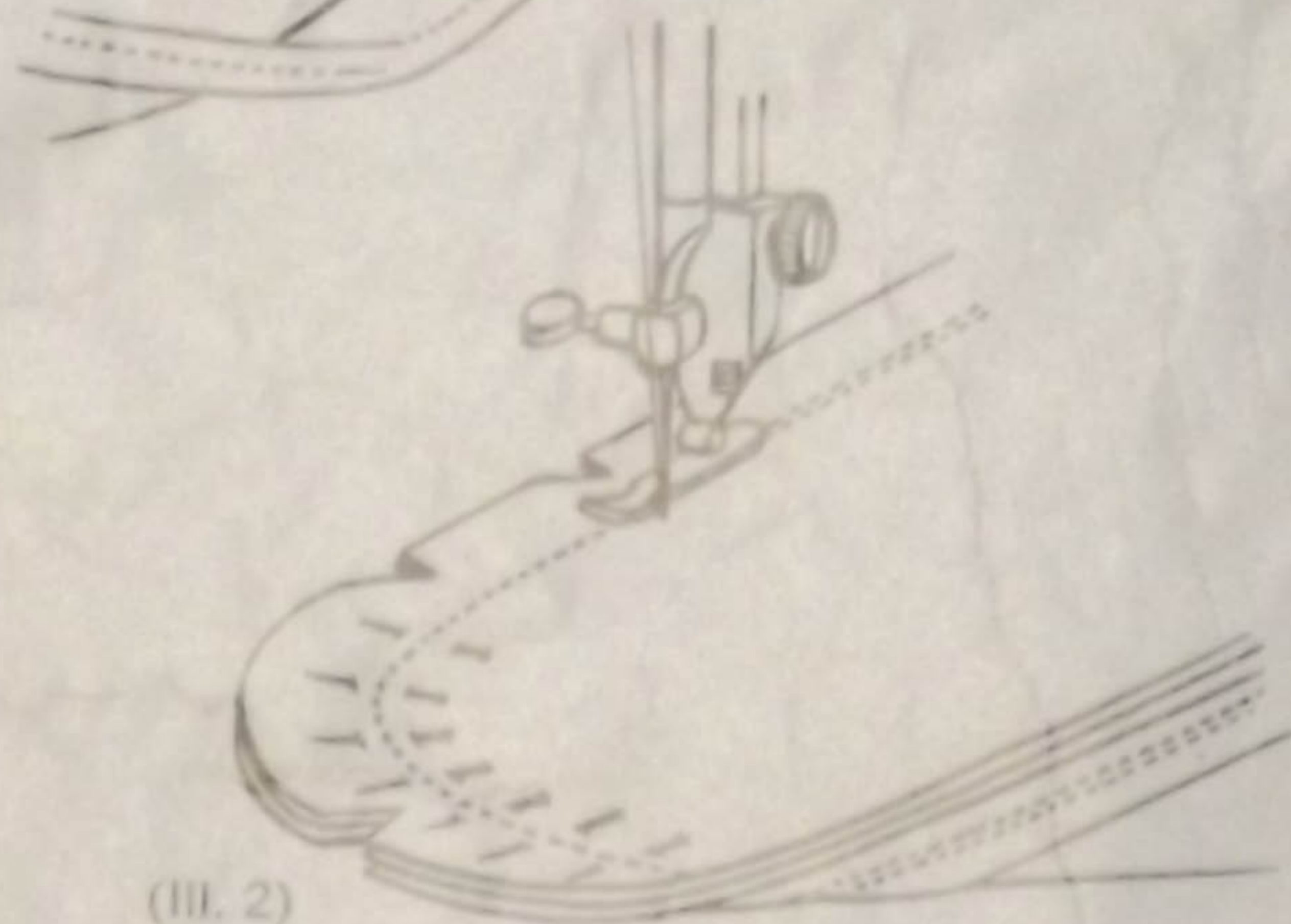




Finishing Instructions for Pillow



(III. 1)



(III. 2)

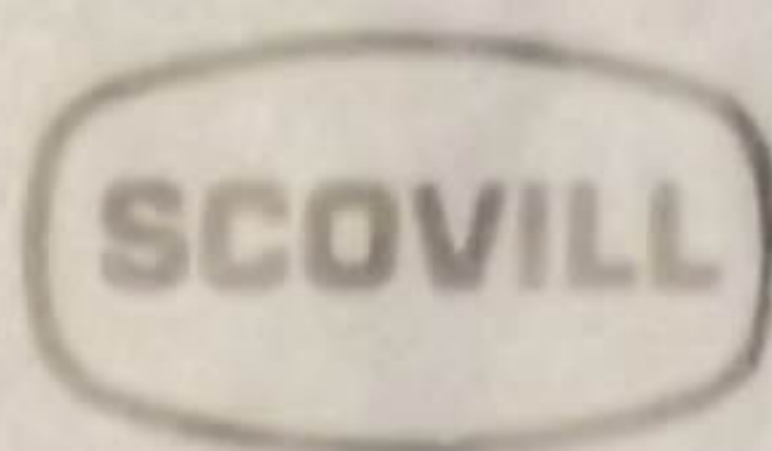
Place the welting provided along the printed "Stitching Line for Welting" on the pillow face with raw edges towards the outside, pin in place, clipping at the corners. Join the welting ends by cutting the cord $\frac{1}{2}$ " longer than needed. Clip out the extra $\frac{1}{2}$ " of cord, turn under raw edge of welting and overlap for a continuous welt. With a zipper or cording foot, stitch the welting to the stitching line on pillow all the way around (III. 1).

Place the pillow back over the welted front, right sides together. Pin and stitch close to cording, leaving an opening for the zipper (III. 2).

Pin the zipper face down and stitch along one side. Open zipper and stitch down the other side.

Trim the seams, clip corners and turn right side out.

Hand wash in mild soap. Do not put in dryer.



Manufactured for

OAKVILLE DIVISION

Scovill Mfg. Co.

SPARTANBURG, S.C. 29301

Made in U.S.A.

Using a flat surface smooth out the unprinted layer of fabric (this becomes the bottom layer), then the cotton wadding and finally the printed top layer. (If desired the wadding can be omitted for a flatter look). After making sure there are no wrinkles, baste layers together from the center outward.

2

Cut a 12" length of six-strand embroidery floss and separate one strand while holding the remainder between thumb and forefinger. All sewing is done with a single thread. A short thread is easier to work with than a long one.

1

SCOVILL OAKVILLE DIVISION

Manufactured by
SCOVILL MFG. CO.
SPARTANBURG, S.C. 29301
MADE IN U.S.A.

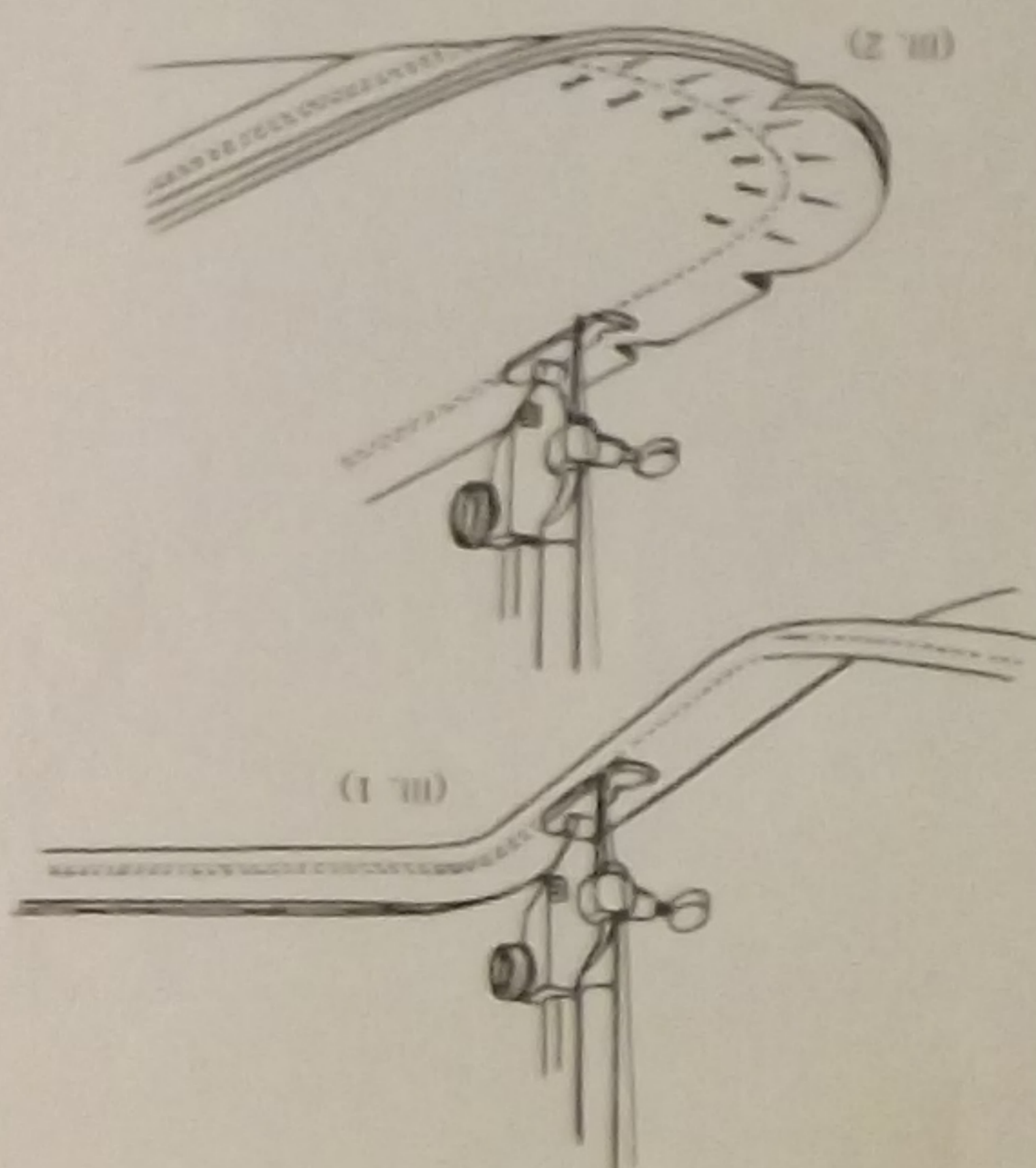
Place the welting provided along the printed "Stitching Line for Welting" on the pillow face with raw edges towards the outside, pin in place, clipping at the corners. Join the welting ends by cutting the cord $\frac{1}{2}$ " longer than needed. Clip out the welting and overlap for a continuous welt. With a zipper or cording foot, stitch the welting to the stitching line on pillow all the way around (Ill. 1).

Place the pillow back over the welted front, right sides together. Pin and stitch close to cording, leaving an opening for the zipper (Ill. 2).

Pin the zipper face down and stitch along one side. Open zipper and stitch down the other side.

Trim the seams, clip corners and turn right side out.

Hand wash in mild soap. Do not put in dryer.



Finishing Instructions for Pillow

Dritz Stitchery

CUT-AWAY APPLIQUE PILLOW KIT

SCOVILL

Decorate with these bold designs. Their quilted look is easy to do. Just cut away and stitch down. A new look for an ancient craft.



"In The Round" Series

KIT CONTAINS: 18 in. x 22 in. white top layer of fabric stencilled with design, colored under layer of fabric and 18 in. x 22 in. colored pillow back; all in 50% Fortrel[®]/50% cotton • 18 in. x 20 in. sheet of 100% cotton wedding • 6 1/2 in. of self-covered welting • 13 in. nylon zipper • 4 yds. of #3 Perle 100% cotton thread • 80 in. of six strand embroidery floss • one #6 crewel needle • one #17 tapestry needle • complete instructions.