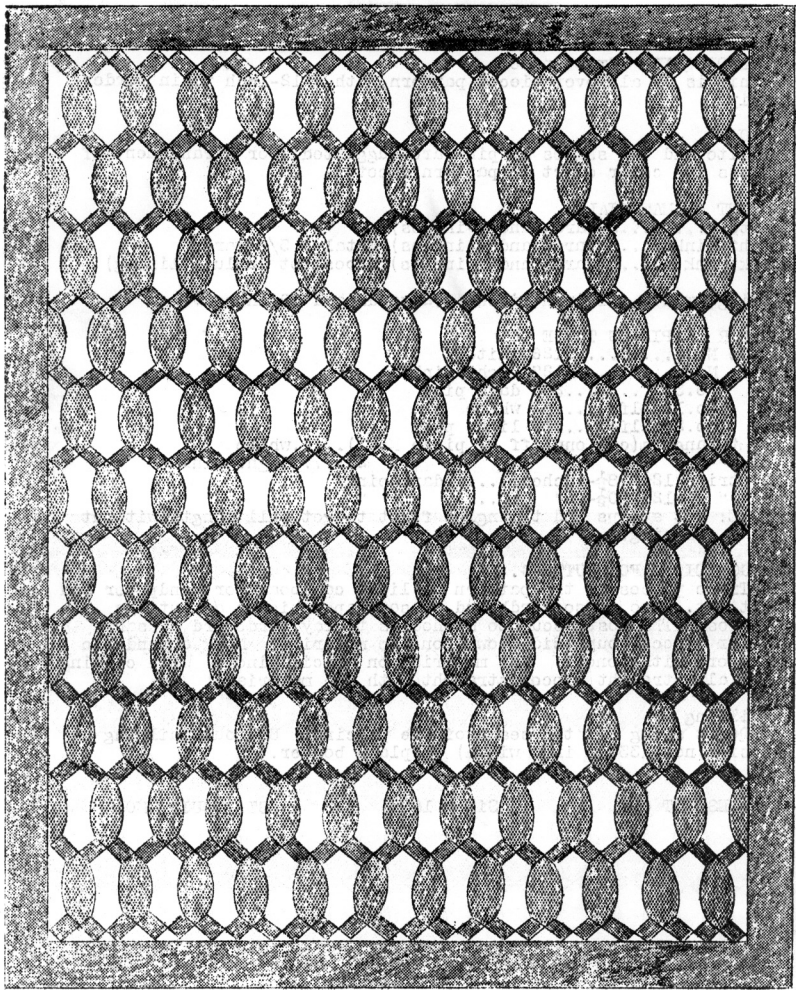


QUILT NO. 122 LOVER'S LINK  
76x90-inches



INSTRUCTION SHEET  
QUILT PATTERN NO.122-LOVERS LINK

SIZE OF QUILT 78x90-inches.

This is an all over pieced pattern with a 12-inch plain border strip.

COLORS

White and two shades of pink are suggested. For arrangement of colors see color chart on pattern sheet.

AMOUNT OF MATERIAL

White.....2 yards and 9-inches)  
Light pink.....2 yards and 9-inches) Total 9 3/4 yards  
Dark pink.....5 yards and 9-inches) (Does not include lining)

Lining, white, 81-inch width....2 yards and 18-inches.

NUMBER OF PIECES TO BE CUT

Piece No.1.....126 white  
" No.2.....127 light pink  
" No.3.....288 dark pink  
" No.1(half)....12 white  
" No.2(half)....10 light pink  
24 triangles(cut end off of piece No.1)....white  
26 " " " " " " " " 2)....light pink  
2 strips 12<sup>1</sup>/<sub>2</sub>x7<sup>1</sup>/<sub>2</sub>-inches.....dark pink  
2 " 12<sup>1</sup>/<sub>2</sub>x9<sup>1</sup>/<sub>2</sub>- " " " " " "

NOTE: Cut strips and triangles first to get full length without piecing.

SUGGESTIONS FOR CUTTING.

Trace pieces of the pattern on light cardboard or sandpaper and cut out. Use these cardboard or sandpaper pieces as cutting guides. The most accurate method is to lay cardboard or sandpaper pieces(rough side down) on the material. Mark around the pattern with pencil. Cut material on pencil lines. When cutting lay all straight pieces straight with the material.

Quilting

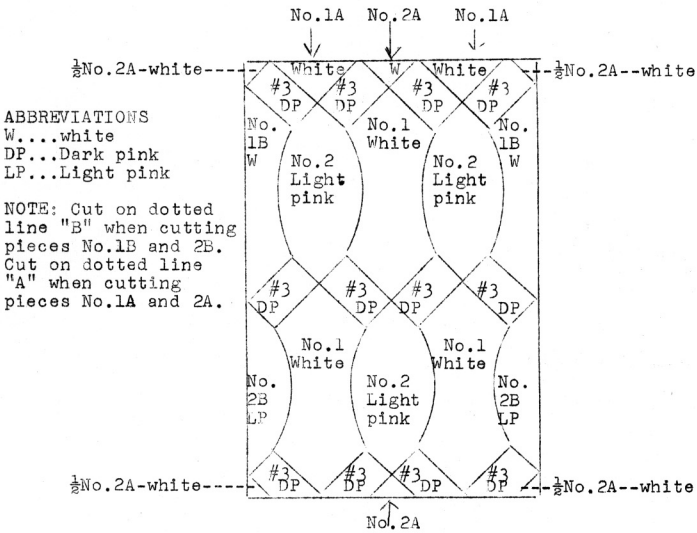
Quilt along all the seams of the piecing. Use our quilting design no.Q133(11 inch width) on plain border.

LADIES ART CO.

Since 1889

ST. LOUIS, MO.

QUILT PATTERN NO.122--LOVER'S LINK



ABBREVIATIONS  
 W...white  
 DP...Dark pink  
 LP...Light pink

NOTE: Cut on dotted line "B" when cutting pieces No.1B and 2B.  
 Cut on dotted line "A" when cutting pieces No.1A and 2A.

