

NURSERY QUILT BLOCKS

9 x 9



468A

12 to a SET

includes 6 different designs

100% COTTON

RN 15968

2-11-11-2-000

DIRECTIONS FOR MAKING QUILT

24 SQUARES- APPROXIMATE SIZE- 36X36"
EMBROIDER SQUARES SEPARATELY FOLLOWING
EMBROIDERY INSTRUCTIONS. THEY MAY BE ASSEMBLED
INTO A QUILT IN SEVERAL WAYS, SHOW IN DIAGRAMS
1, 2, AND 3.

1. EMBROIDERED SQUARES MAY BE SEWN IN 4 STRIPS
OF 6 AND THE STRIPS THEN SEWN TOGETHER. 2. 12
SQUARES MAY BE USED FOR THE SAME SIZE QUILT
BY INTERLACING THEM WITH PLAIN COLORED SQUARES OF
SAME SIZE AND QUALITY. 3. THEY MAY BE DIVIDED
BY STRIPS OF COLORED MATERIAL ANY DESIRED WIDTH
WITH WIDE SEAM SQUARES AT THE INTERSECTIONS,
TO MAKE A LARGER QUILT.

PRESS ALL SEAMS AS YOU GO FOR A SMOOTH APPEAR-
ANCE.

QUILT BACKING SHOULD BE OF SAME QUALITY AS
FRONT AND IS USUALLY WHITE. COTTON BATTING IS
THE PREPARED FILLING MATERIAL AND EASILY OB-
TAINABLE. CUT BATTING MATERIAL EXACT SIZE AS
ASSEMBLED FRONT AND LAY IT OUT SMOOTHLY. LAY
FILLING OVER IT AND THEN THE EMBROIDERED TOP
PIECE. SECURE ALL THREE LAYERS TOGETHER WITH
NO MARK PLUGS AS NECESSARY TO KEEP FROM SLIPPING
AND STARTING AT CENTER IN BASTING OUT
TO ALL FOUR SIDES AND ACROSS FROM CORNER TO
CORNER DIAGONALLY. BASTE EDGES TOGETHER AND
REMOVE PLUGS ON ALL FOUR SIDES. YOU ARE NOW
READY FOR QUILTING.

A QUILTING FRAME OR A SMALL QUILTING FOOT MAY
BE USED OR QUILTING MAY BE DONE IN THE HAND
USE A SHARP SHARP QUILTING NEEDLE AND EXTRA
STRONG WHITE QUILTING COTTON THREAD TAKING
SMALL RUNNING OR BACK STITCHES THROUGH ALL
THREE THICKNESSES OF MATERIAL COVERING EACH
STAMPED DOT. DO NOT KNOT THE THREAD, AND ON
THESE THIN BACK STITCHES WILL HOLD IT.

QUILT ALONG SEAM LINES FIRST ALWAYS WORKING
FROM CENTER TOWARD YOU, THEN TOWARD OPPOSITE
SIDE. NEXT FROM CENTER TO RIGHT AND FROM CENTER
OR TO LEFT SIDE TO KEEP AN EVEN APPEARANCE.
BACK ALL SEAM LINES ARE QUILTED, QUILT THE
EMBROIDERED SQUARES AS STAMPED IN DOTS COVER-
ING EACH DOT.

PLAIN SQUARES MAY BE QUILTED DIAGONALLY, IN
CIRCLES OR CROSS-CROSS DIAMONDS OR SQUARES.
USE A SHARP HARD PENCIL TO MARK DOTS.

WHEN ALL QUILTING IS FINISHED BIND AROUND EDGE
WITH RIAS BINDING OF DESIRED WIDTH AND COLOR.

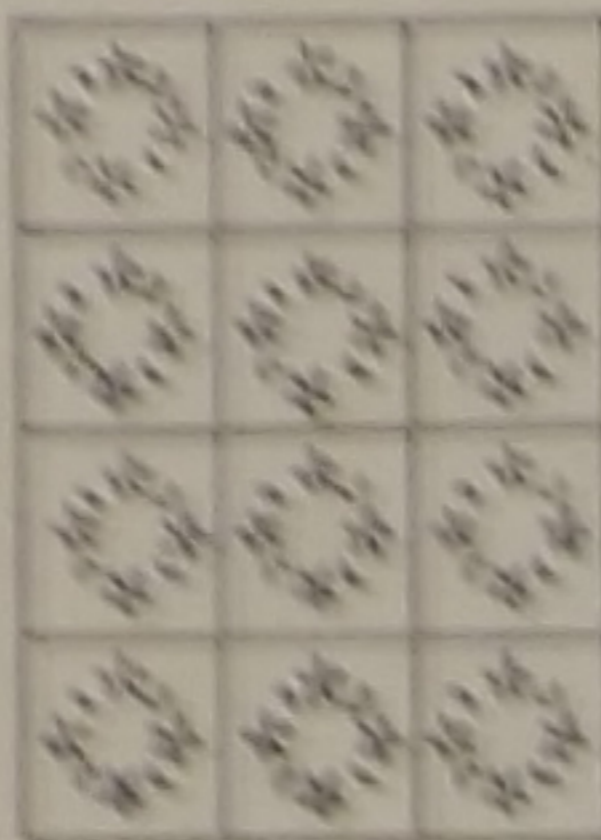


DIAGRAM 1

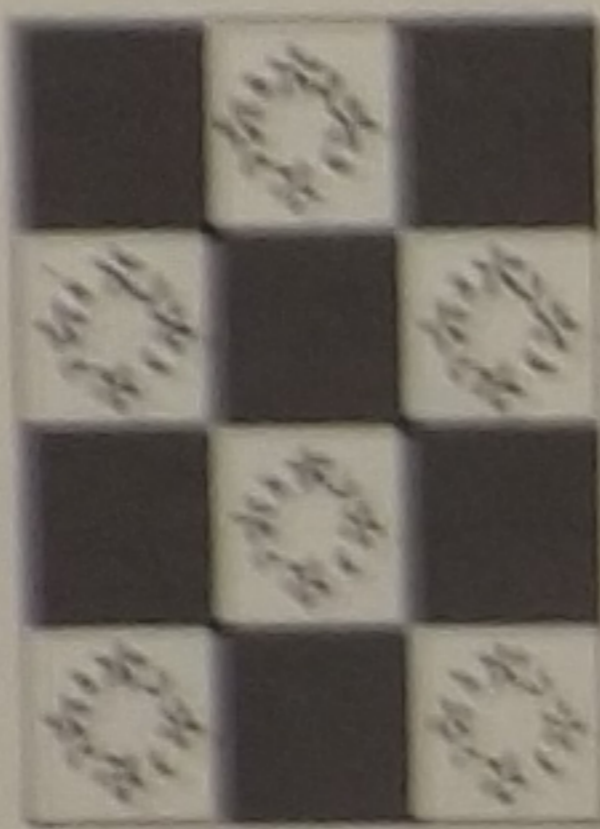


DIAGRAM 2

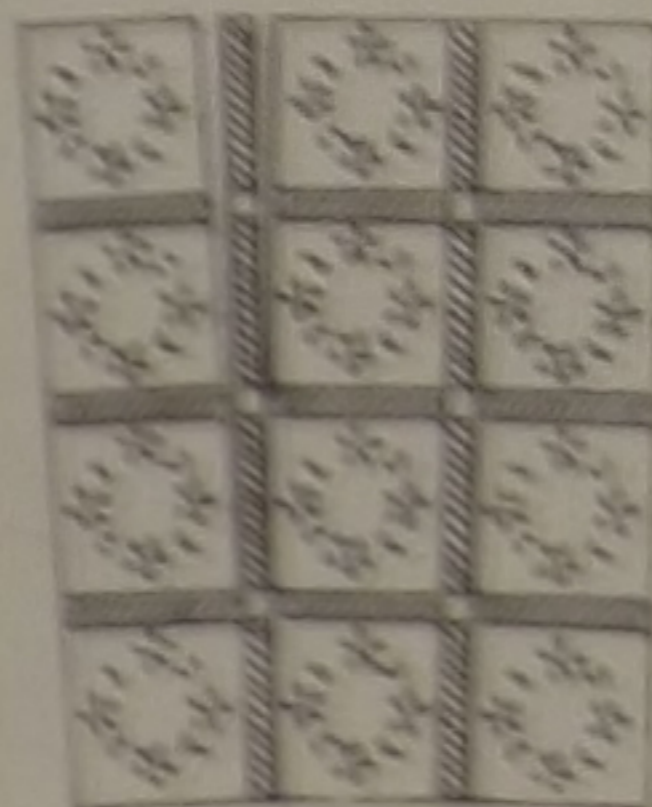
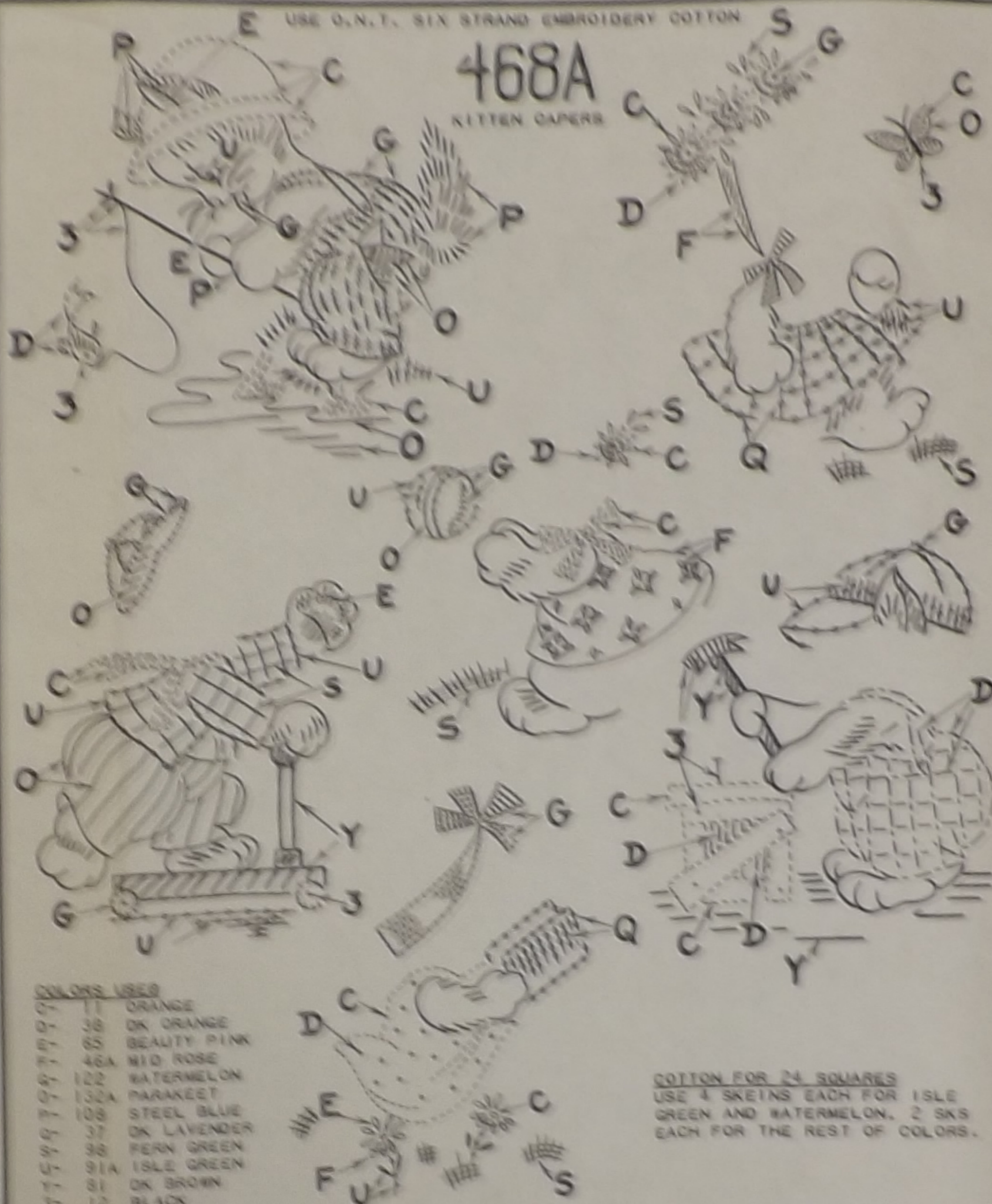


DIAGRAM 3



USE O.N.T. SIX STRAND EMBROIDERY COTTON

468A
KITTEN CAPERS

- COLORS USED**
- 01 ORANGE
 - 02 DK ORANGE
 - 03 BEAUTY PINK
 - 04 MID ROSE
 - 05 WATERMELON
 - 06 PARAKEET
 - 07 STEEL BLUE
 - 08 DK LAVENDER
 - 09 FERN GREEN
 - 10 ISLE GREEN
 - 11 DK BROWN
 - 12 BLACK

COTTON FOR 24 SQUARES
USE 4 SKEINS EACH FOR ISLE
GREEN AND WATERMELON. 2 SKS
EACH FOR THE REST OF COLORS.

EMBROIDERY INSTRUCTIONS

KITTEN-EYE-NOSE-TONGUE- SATIN STITCH. 1 STRAND.
WHISKERS-EYELINE-LASHES- OUTLINE ST. 1 STR.
BODY- SINGLE ST. 3 STR. OUTLINE ST. 2 STR. EAR-
OUTLINE ST. SINGLE ST. 2 STR. CLOTHES-RIBBON-ROCK-
BALL- OUTLINE ST. 2 STR. RUNNING ST. LOOP ST.
SINGLE ST. 3 STR. FRENCH KNOTS- 3 STR. WOUND TRICE
AROUND THE NEEDLE. DAISIES- LOOP ST. 3 STR. CENTER
SATIN ST. 2 STR. LEAVES- LOOP ST. 2 STR. STEMS- OUT-
LINE ST. 1 STR. GRASS- SINGLE ST. 2 STR. CRATE-HAMMER-
SCOOTER-GROUND LINES-RIVER BANK-BUTTERFLY-FISH-WATER-
FISHING LINE SINGLE ST. 2 STR. OUTLINE ST. LOOP ST.
SATIN ST. 1 STR. WHEEL- OUTLINE ST. 2 STR.

STITCH DETAILS

