

STAMPED FOR EMBROIDERY

# NURSERY QUILT BLOCKS

12 IN THIS PACKAGE 9X9 INCHES  
6 DIFFERENT CO-ORDINATED DESIGNS



"NOAH'S ARK ANIMALS"

EASY TO FOLLOW  
INSTRUCTION  
FOR EMBROIDERY  
AND QUILTING !

12 BLOCKS REQUIRE  
THE FOLLOWING 6 STRAND  
EMBROIDERY THREADS

for 12 squares

1 skein each:

- lt. blue
- rose
- orange
- pink
- dk. green
- black
- lt. green
- yellow
- purple
- lavender
- dk. blue



NO. 783A

2008-11-11-20

FABRIC CONTENT

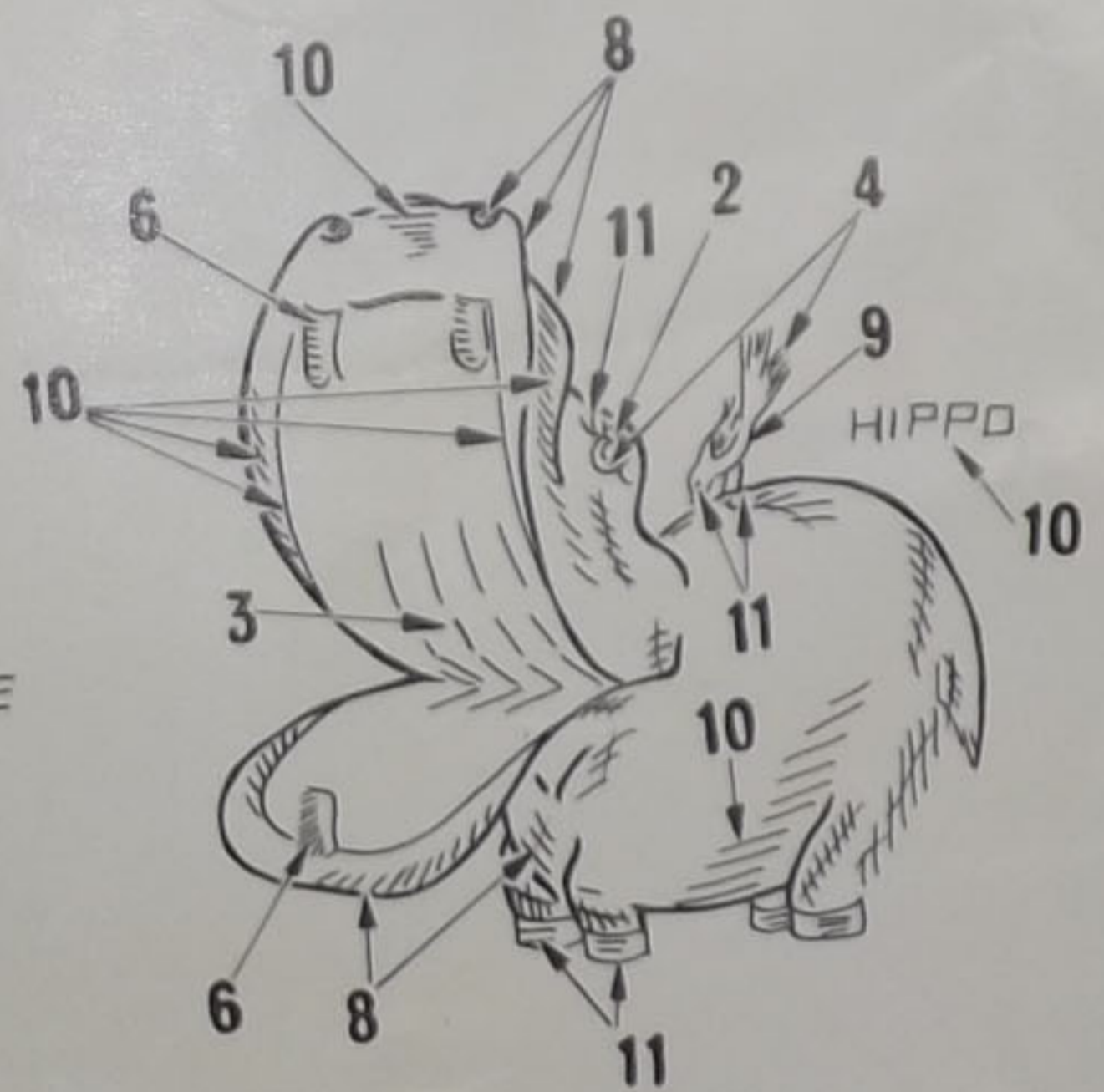
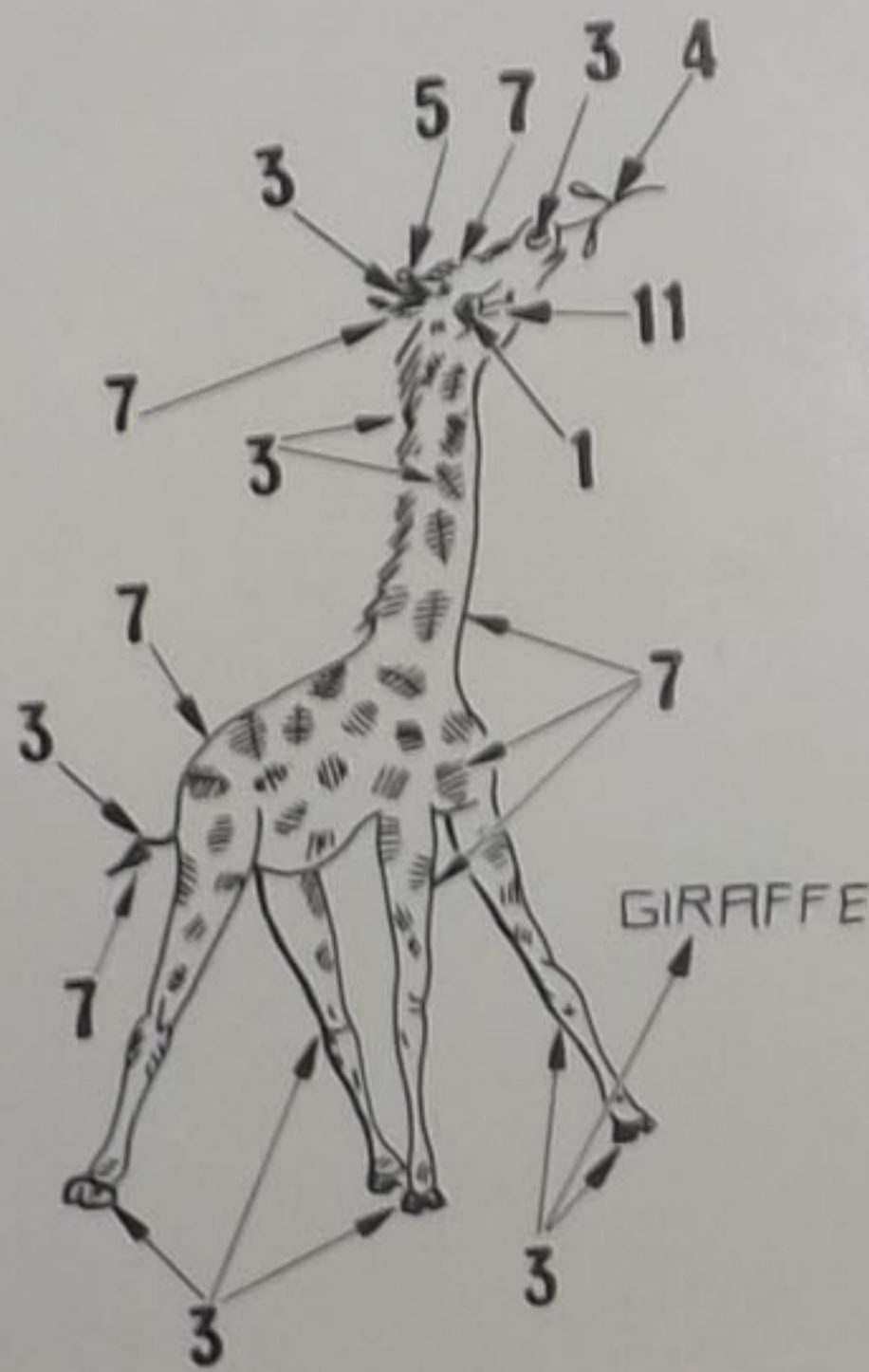
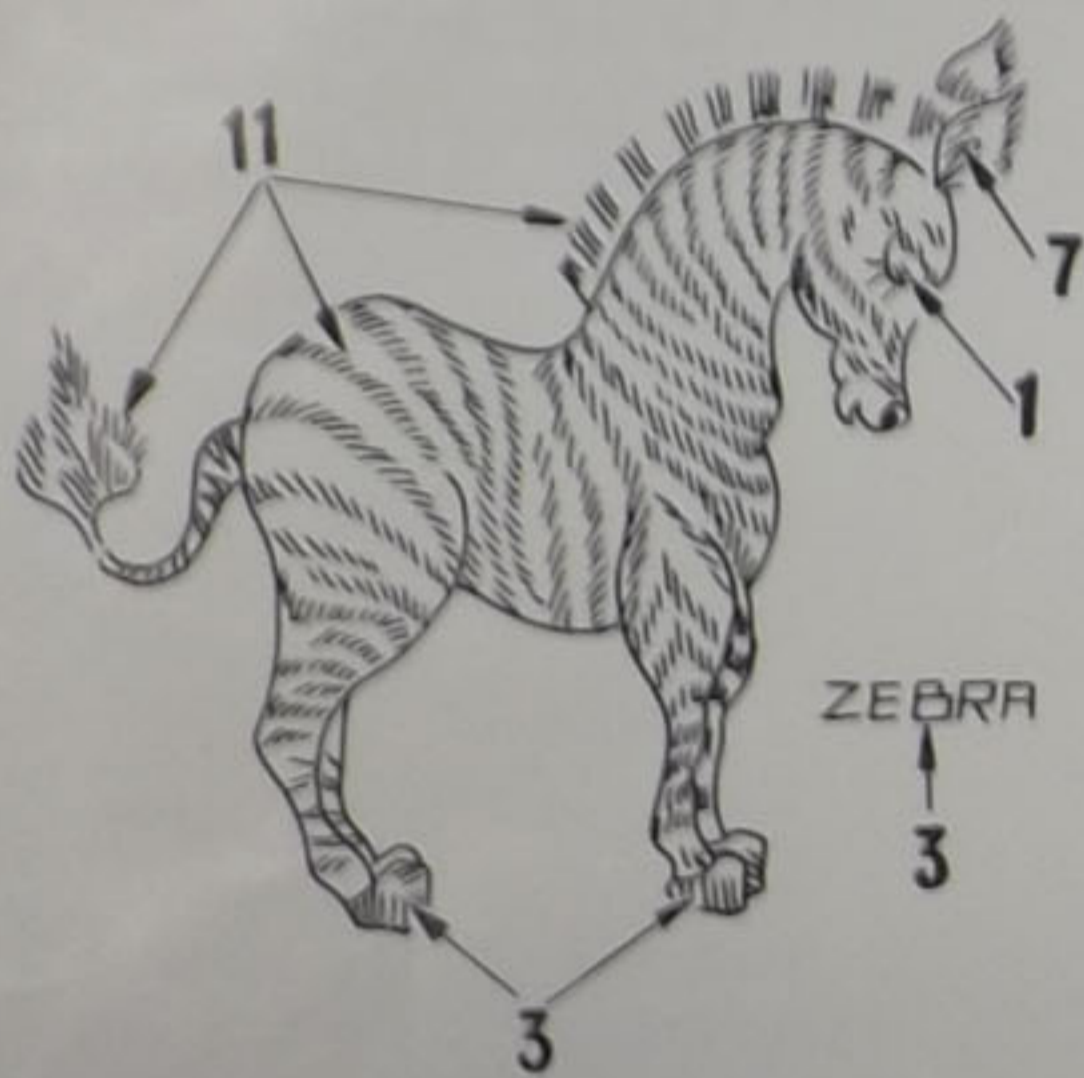
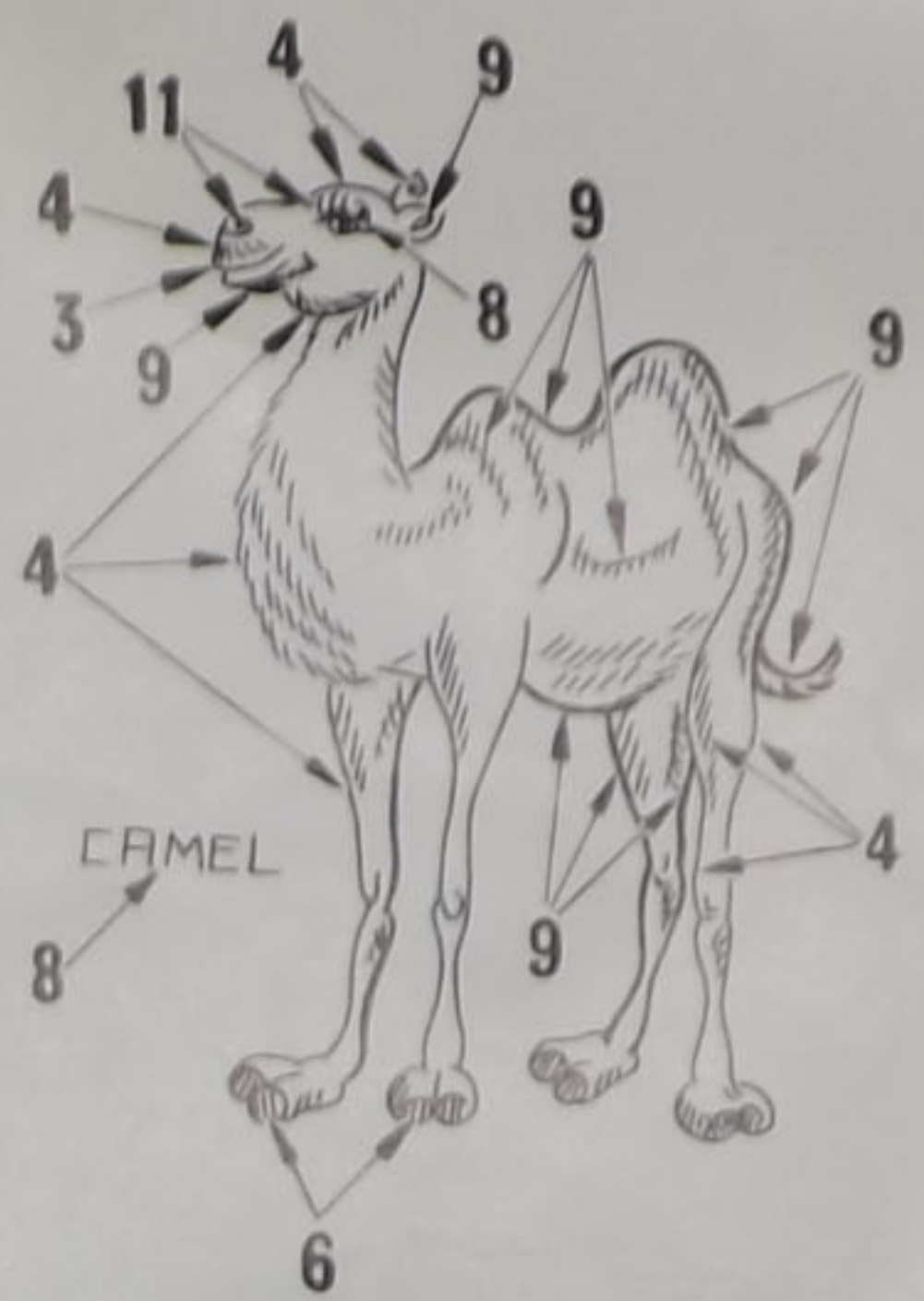
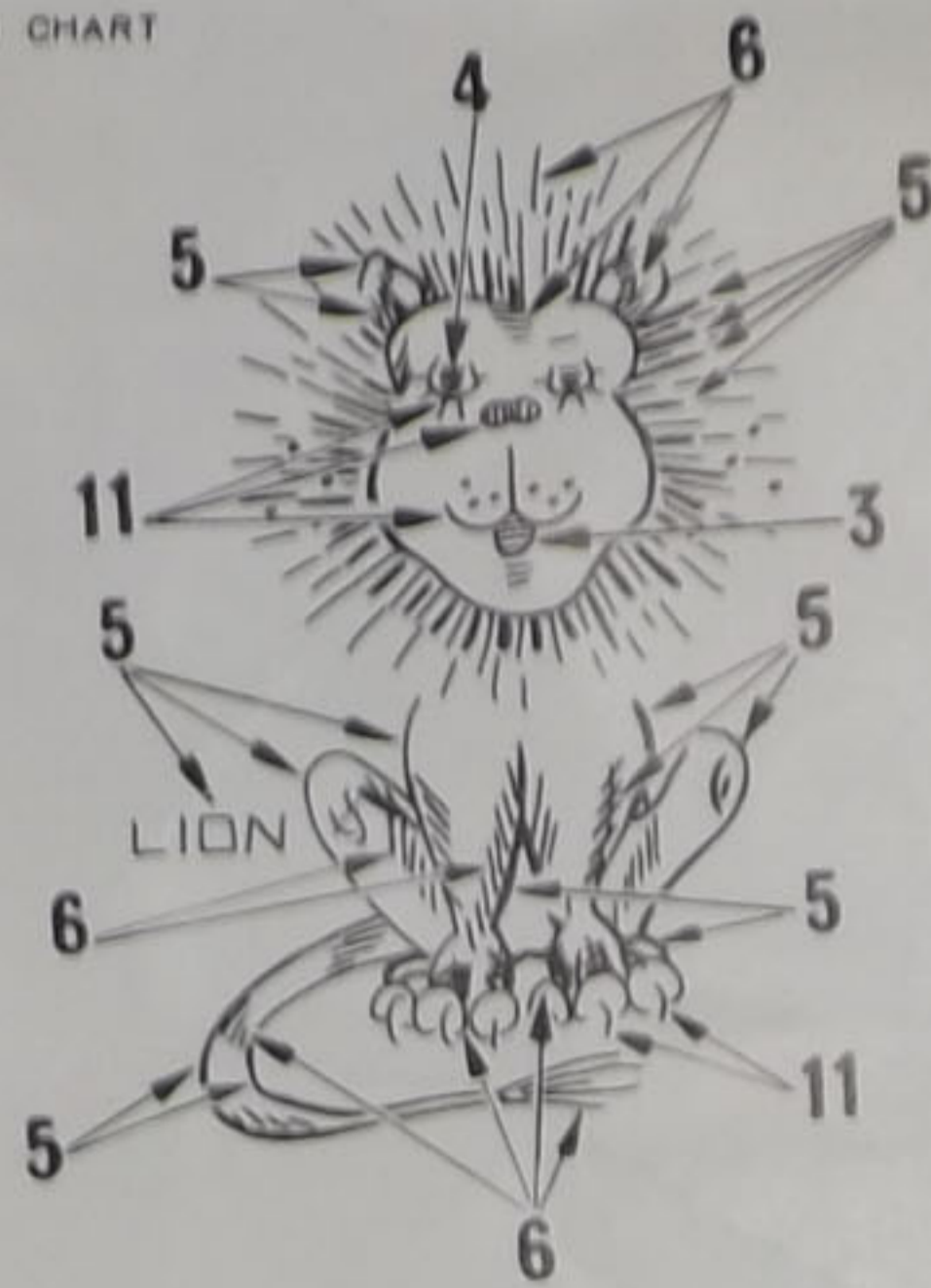
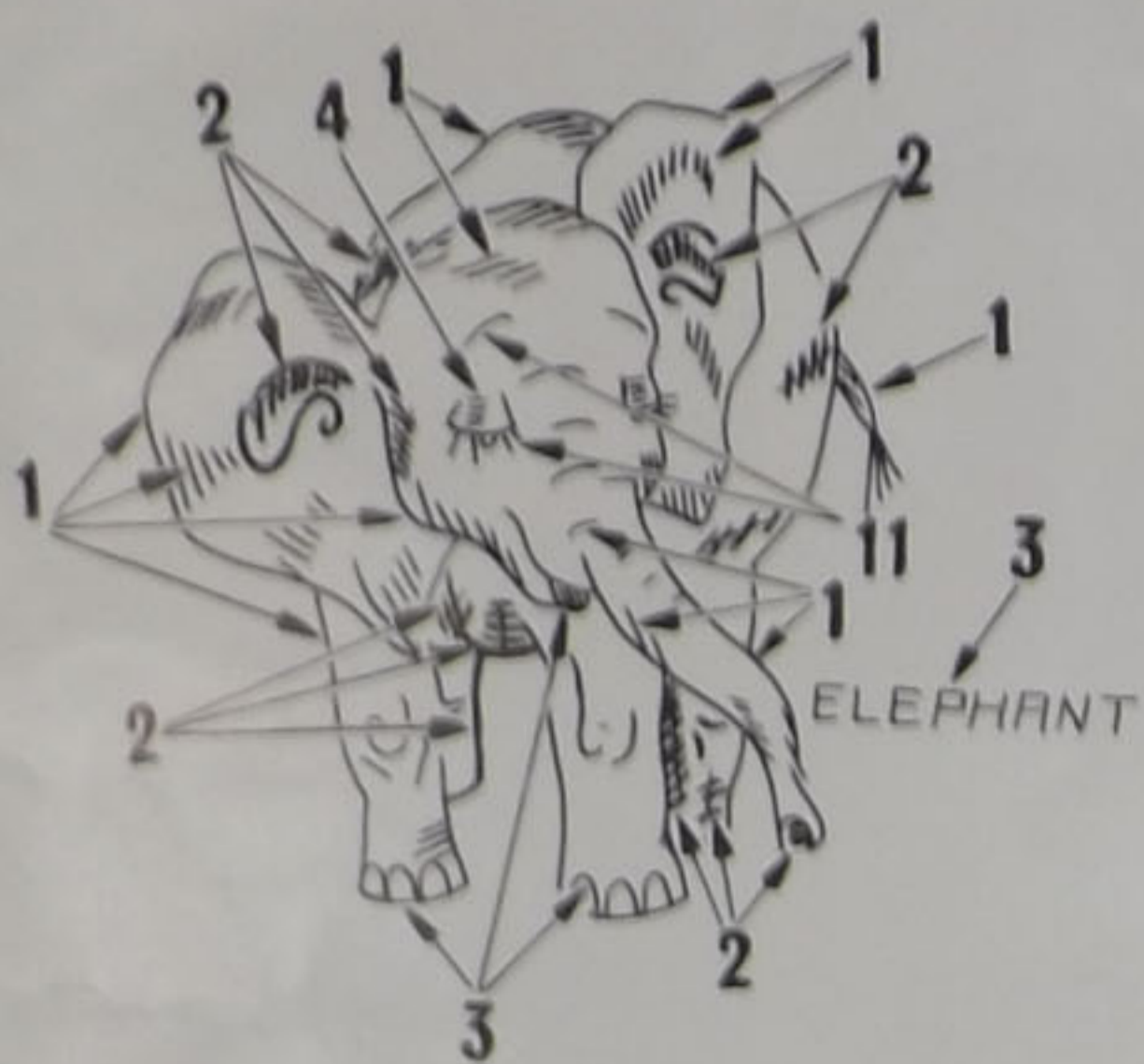
100% cotton

RN 15968

MADE IN U.S.A.



EMBROIDERY LESSON CHART



COLORS USED

- 1-LT. BLUE
- 2-DK. BLUE
- 3-ROSE
- 4-LT. GREEN
- 5-ORANGE
- 6-YELLOW
- 7-PINK
- 8-PURPLE
- 9-DK. GREEN
- 10-LAVENDER
- 11-BLACK

EMBROIDERY COTTON REQUIRED

FOR 12 SQUARES, 1 SKEIN OF EACH COLOR AS LISTED.

EMBROIDERY INSTRUCTIONS

ALL ANIMALS EXCEPT ZEBRA-ALL OUTLINE STITCH AND SINGLE STITCH, 2 STRANDS EXCEPT FOR ALL DETAIL IN BLACK, USE 1 STRAND. ZEBRA-BODY-OUTLINE AND SINGLE STITCH, USE 1 STRAND. MANE-TAIL FLUFF-EAR-EYE-HOOF, OUTLINE STITCH AND SINGLE STITCH, USE 2 STRANDS. LION'S WHISKERS-AFTER EMBROIDERY IS FINISHED USE 1 STRAND FROM . TO . LETTERS-BACK STITCH, 1 STRAND.

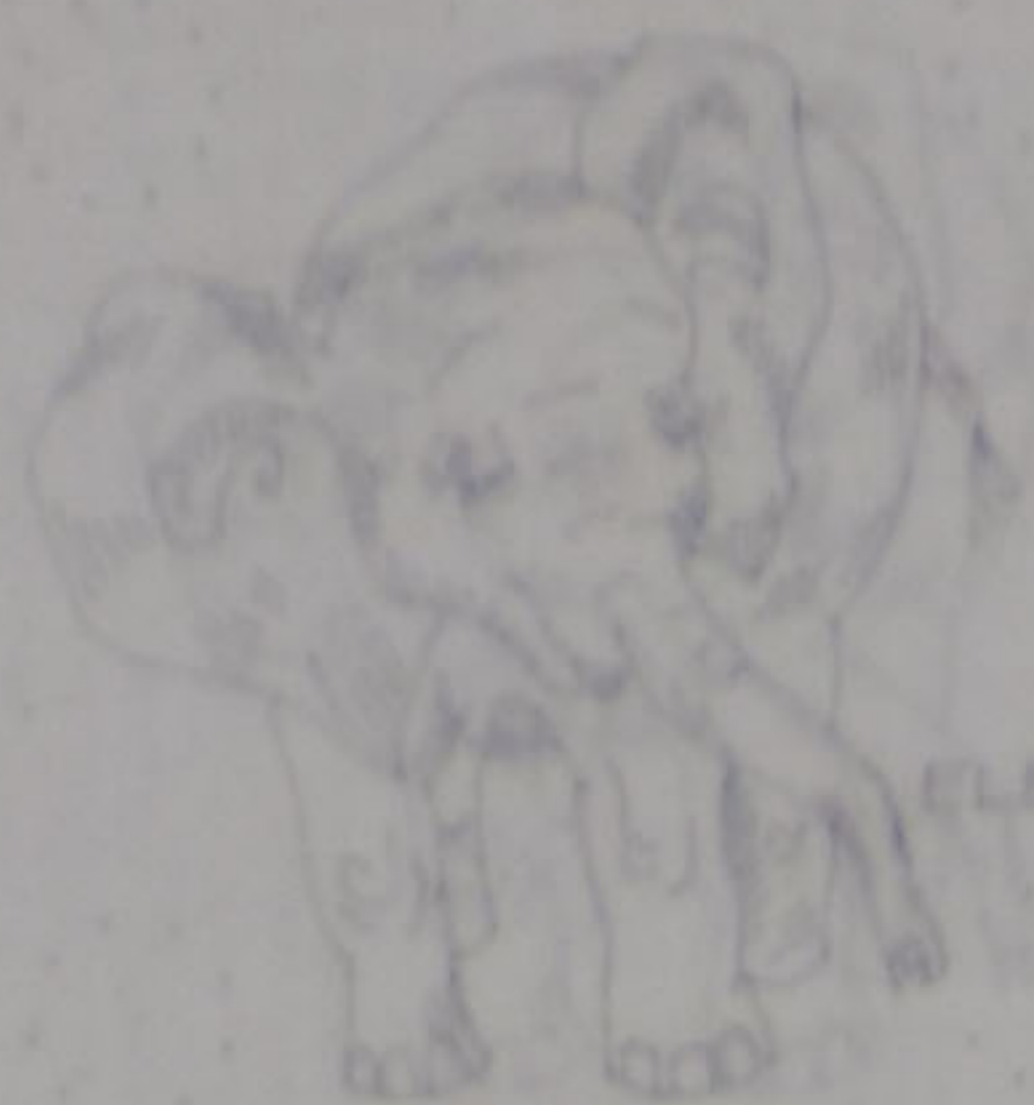
STITCH DETAIL



DIRECTIONS FOR MAKING CRIB QUILT

EMBROIDER SQUARES SEPARATELY FOLLOWING EMBROIDERY INSTRUCTIONS. ASSEMBLE INTO A QUILT BY SEWING SQUARES INTO STRIPS, THEN SEWING STRIPS TOGETHER. SEW SEAMS EVENLY BY HAND OR MACHINE. PRESS ALL SEAMS FOR A SMOOTH APPEARANCE. FOR THE BACKING USE A PLAIN COTTON FABRIC CUT THE SAME SIZE AS THE SEWN TOGETHER EMBROIDERED SQUARES. LAY THE BACKING SMOOTHLY, COVER WITH THE FILLING AND TOP WITH THE EMBROIDERED PIECE. FASTEN ALL THREE LAYERS TOGETHER WITH STRAIGHT PINS PLACED CLOSE ENOUGH TOGETHER TO KEEP THE LAYERS FROM SHIFTING. START AT CENTER. RUN BASTINGS OUT TO ALL 4 SIDES AND ACROSS FROM CORNER TO CORNER DIAGONALLY. BASTE EDGES TOGETHER AND REMOVE PINS. A QUILTING FRAME OR HOOP MAY BE USED OR THE QUILTING MAY BE DONE IN THE HAND. USE A SHORT SHARP QUILTING NEEDLE AND EXTRA STRONG WHITE COTTON THREAD. TAKE SMALL RUNNING OR BACK STITCHES THROUGH ALL THREE THICKNESSES OF MATERIAL COVERING EACH STAMPED DOT. DO NOT KNOT THE THREAD, 2 OR 3 TINY BACK STITCHES WILL HOLD. QUILT ALONG SEAM LINES FIRST. ALWAYS WORK FROM CENTER TOWARD EDGE, WORKING FIRST CENTER TO BOTTOM, CENTER TO TOP, CENTER TO RIGHT THEN LEFT TO KEEP AN EVEN APPEARANCE. AFTER THE SEAM LINES ARE FINISHED, QUILT THE EMBROIDERED SQUARES SEWING ON EACH DOT. TO FINISH, BIND AROUND EDGES WITH BIAS BINDING OF DESIRED WIDTH AND COLOR.





ELEPHANT



LION



ZEBRA



CAMEL



GIRAFFE



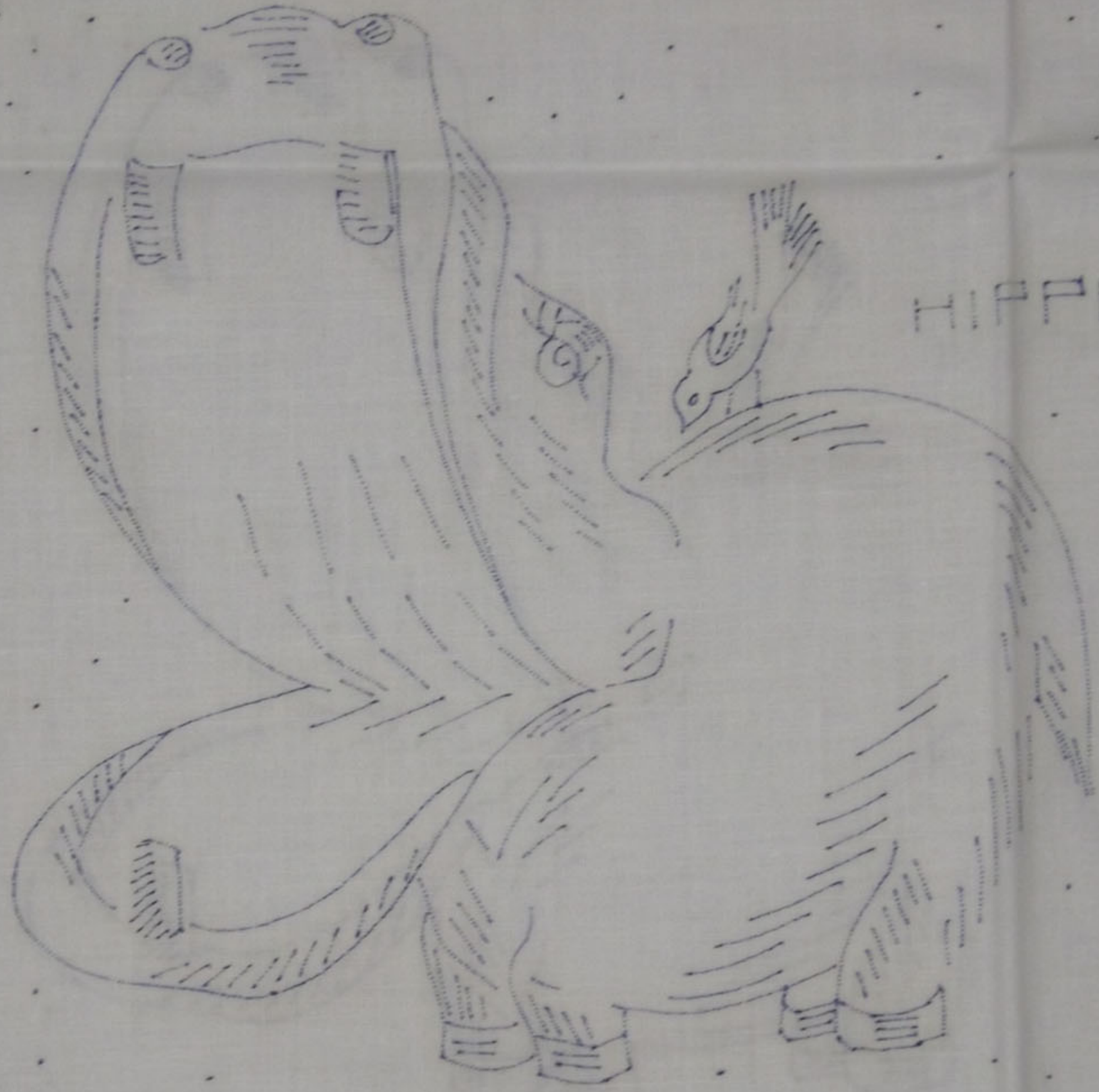
HIPPO





GIRAFFE





HIPPO





ELEPHANT