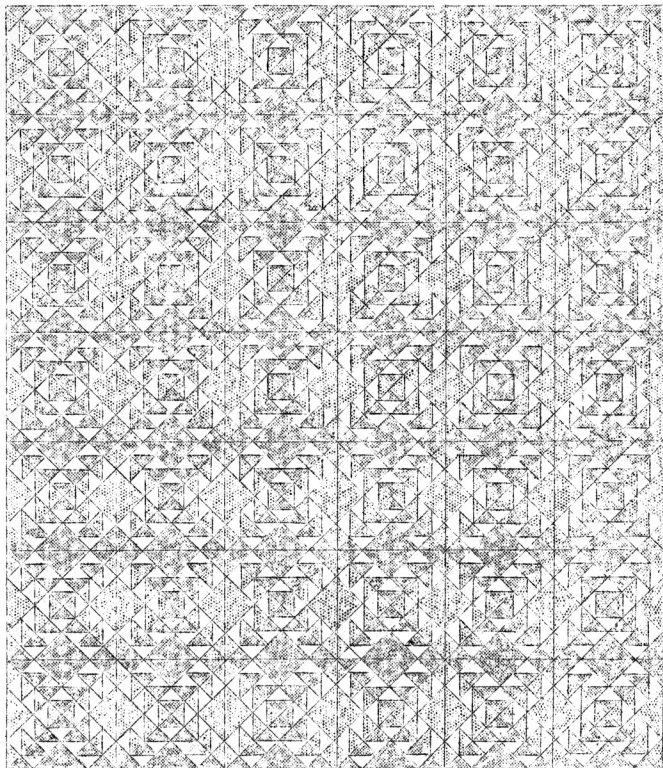


QUILT PATTERN NO.132 - OLD MAID'S RAMBLE.



SIZE OF QUILT - 84x99 inches

LADIES ART COMPANY

ST. LOUIS, MISSOURI

QUILT PATTERN NO.132 - OLD MAID'S RAMELE.

INSTRUCTION SHEET

SIZE OF QUILT = 86x99 inches.

This quilt, as illustrated on the other side of this sheet is made up of forty-two 13-inch pieced blocks and a 4-inch plain border strip.

COLORS

White, rose and green are suggested for this design. See color chart on pattern sheet for arrangement of colors.

AMOUNT OF MATERIAL REQUIRED

White.....4 yards	)	Total 13 yards and 12 inches (Does not include lining)
Rose.....4 "	)	
Green.....5 " and 12 inches	)	

LINING, white, 90-inch width....2 yards and 27 inches.

NUMBER OF PIECES TO BE CUT

Piece #1....588	Green
" #1....588	Rose
" #1....840	White
" #2.... 84	Rose
" #2.... 84	Green

2 strips -  $4\frac{1}{2} \times 86\frac{1}{2}$  Green

2 strips -  $4\frac{1}{2} \times 99\frac{1}{2}$  Green

SUGGESTIONS FOR CUTTING

Trace pieces of the pattern on light cardboard or sandpaper and cut out. Use these cardboard or sandpaper pieces as cutting guides. The most accurate method is to lay cardboard or sandpaper pattern (rough side down, if sandpaper is used) on the material. Mark around pattern with pencil. Cut out on pencil lines. Whenever possible lay straight edges of the pattern parallel with the threads of the material.

NOTE. Cut long strips first to get full length without piecing.

QUILTING

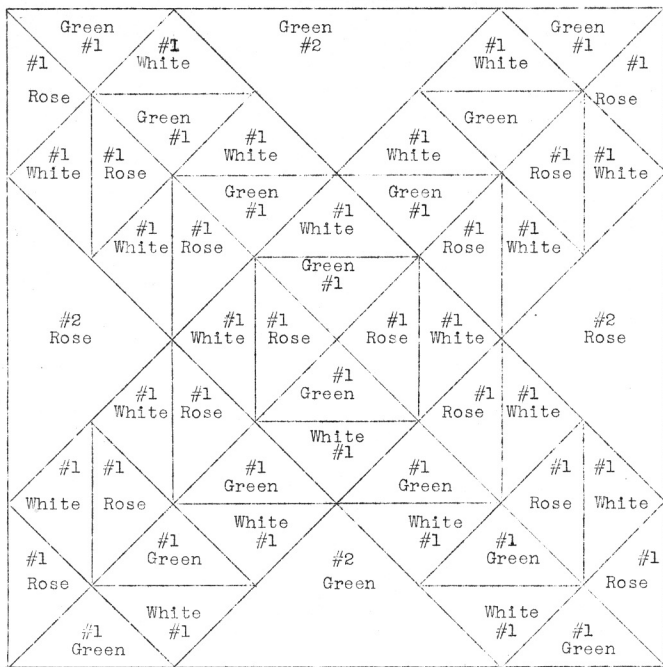
Quilt along all seams of the piecing. Use our quilting design No. Q44 (3-inch width) on plain border strip.

LADIES ART COMPANY

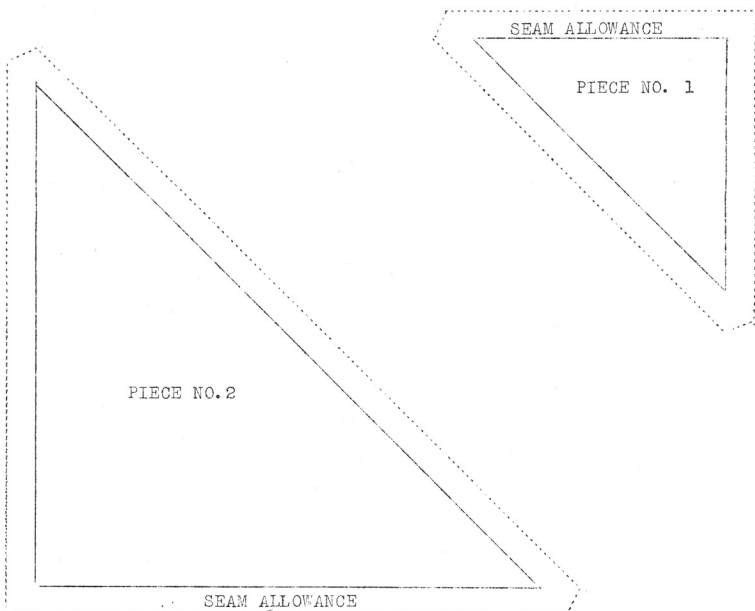
ST. LOUIS, MISSOURI.

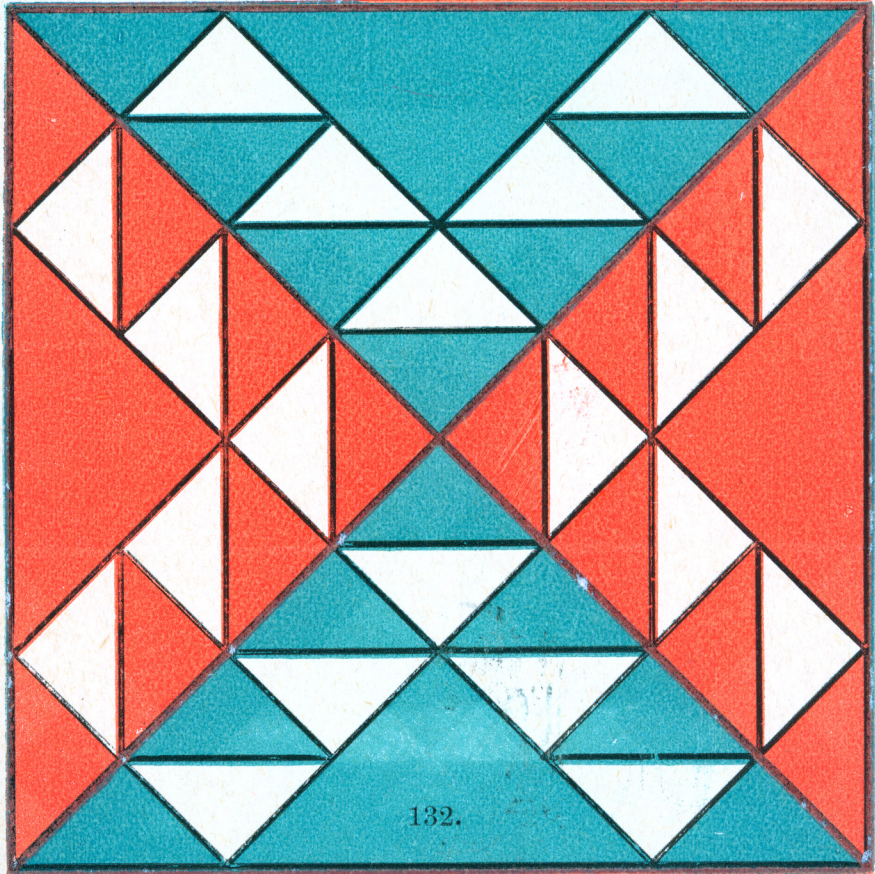
QUILT PATTERN NO. 132 - OLD MAID'S BAMBLE

PATTERN SHEET



COLOR CHART





132.