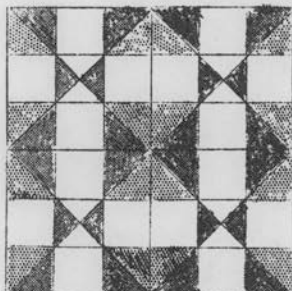


QUILT PATTERN NO.141--THE PRACTICAL ORCHARD



FOUR SET BLOCKS

SIZE OF QUILT, 78x96 inches.

This quilt is made of eighty 9-inch pieced blocks set eight in width and ten in length with a 3-inch border strip.

COLORS

White and two shades of green are suggested for this quilt. Any two colors may be substituted. See Color Chart for arrangement.

AMOUNT OF MATERIAL
 White.....5½ yards
 Dark green.4 " "
 Light green 2 " "

COLOR CHART

Dark green No.2 No.2 Light green	No.1 White	Dark green No.2 No.2 Light green
No.1 White	White #3 Dark green #3 Dark green #3 White	No.1 White
Light green No.2 No.2 Dark green	No.1 White	Light green No.2 No.2 Dark green

NUMBER OF PIECES TO BE CUT

Piece No.1.....320 white
 " No.2.....320 dark green
 " No.2.....320 light green
 " No.3.....160 white
 " No.3.....160 dark green

2 strips, 3½x78½ inches...dark green
 2 " , 3½x96½ inches.. " "

NOTE: Cut strips first to get full length without piecing.

SUGGESTIONS FOR CUTTING

Trace pieces of the pattern on light cardboard or sandpaper and cut out. Use these cardboard or sandpaper pieces as cutting guides. The most accurate method is to lay cardboard or sandpaper pieces(rough side down if sandpaper is used) on the material and mark around with pencil. Cut out on pencil lines. Whenever possible lay straight edge of the material parallel with the threads of the material.

QUILTING

Quilt along all the seams of the piecing. Use our quilting design No.Q43(2-inch width) on the plain border strip.

LADIES ART CO.

Since-1889

ST. LOUIS, MISSOURI

