

QUILT NO. 387-GRAPE BASKET

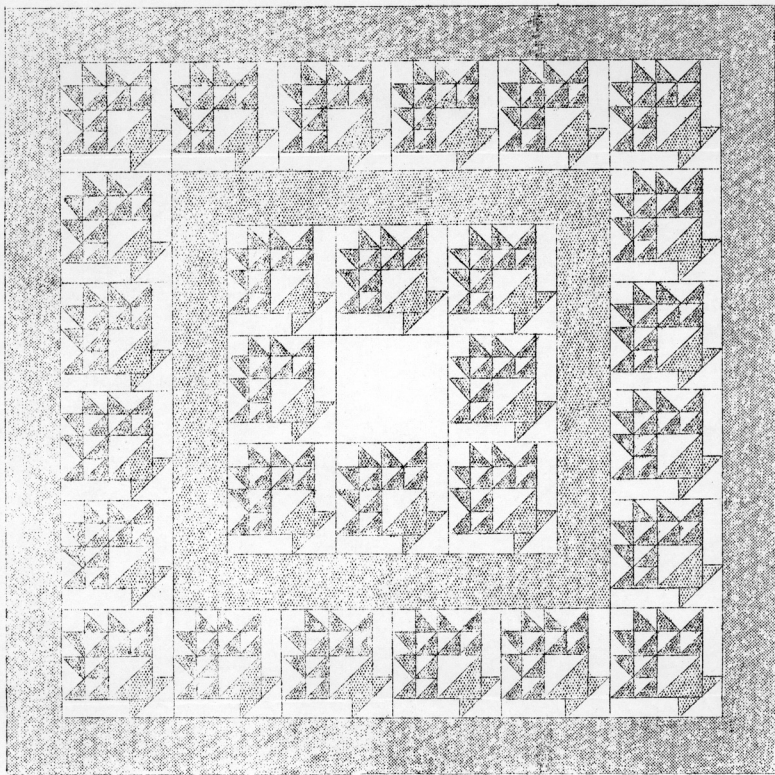
SIZE OF QUILT 91x91-inches.

This quilt as illustrated below is made of twenty-eight 13-inch pieced blocks, one plain 13-inch block in center of quilt, and two 5 $\frac{1}{2}$ -inch plain strips.

COLORS

White or cream and two shades of lavender are suggested. For arrangement of colors see color chart on sheet No.2.

See sheet No.2 for further instructions.



INSTRUCTION SHEET--No. 387--GRAPE BASKET

COLOR CHART

No. 5 White	No. 4 White No. 4 Dark Lavender	No. 1 White No. 4 Dark lavender	No. 4 dark lavender	No. 3 White
No. 4 Dark lavender No. 4 White	No. 4 White No. 4 Dark Lavender	No. 4 White No. 4 Dark lavender	No. 4 White No. 4 Dark Lavender	
No. 4 Dark lavender No. 1 White	No. 4 White No. 4 Dark Lavender	No. 2 White		
No. 4 Dark lavender No. 4 White	No. 4 White No. 4 Dark Lavender			
No. 3 White		No. 4 Light lavender	No. 2 White	No. 4 Light lavender

QUILTING

Quilt along all the seams of the piecing. Use out No. Q41 (12-inch square and 6-inch border) on plain square and strips.

SUGGESTIONS FOR CUTTING

Trace pieces of the pattern on light cardboard or sand paper. Use these cardboard or sandpaper pieces as cutting guides. The most accurate method is to lay cardboard or sandpaper pieces (rough side down) on the material. Mark around pattern with pencil. Cut material on pencil lines. When cutting, lay all straight pieces straight with the material.

AMOUNT OF MATERIAL

White or cream.....4 yards and 18-inches)
 Light lavender.....2 yards and 9-inches) Total 10½ yards--does
 Dark lavender.....3 yards and 18-inches) not include lining.

Lining, white, 36-inch width.....8 yards.

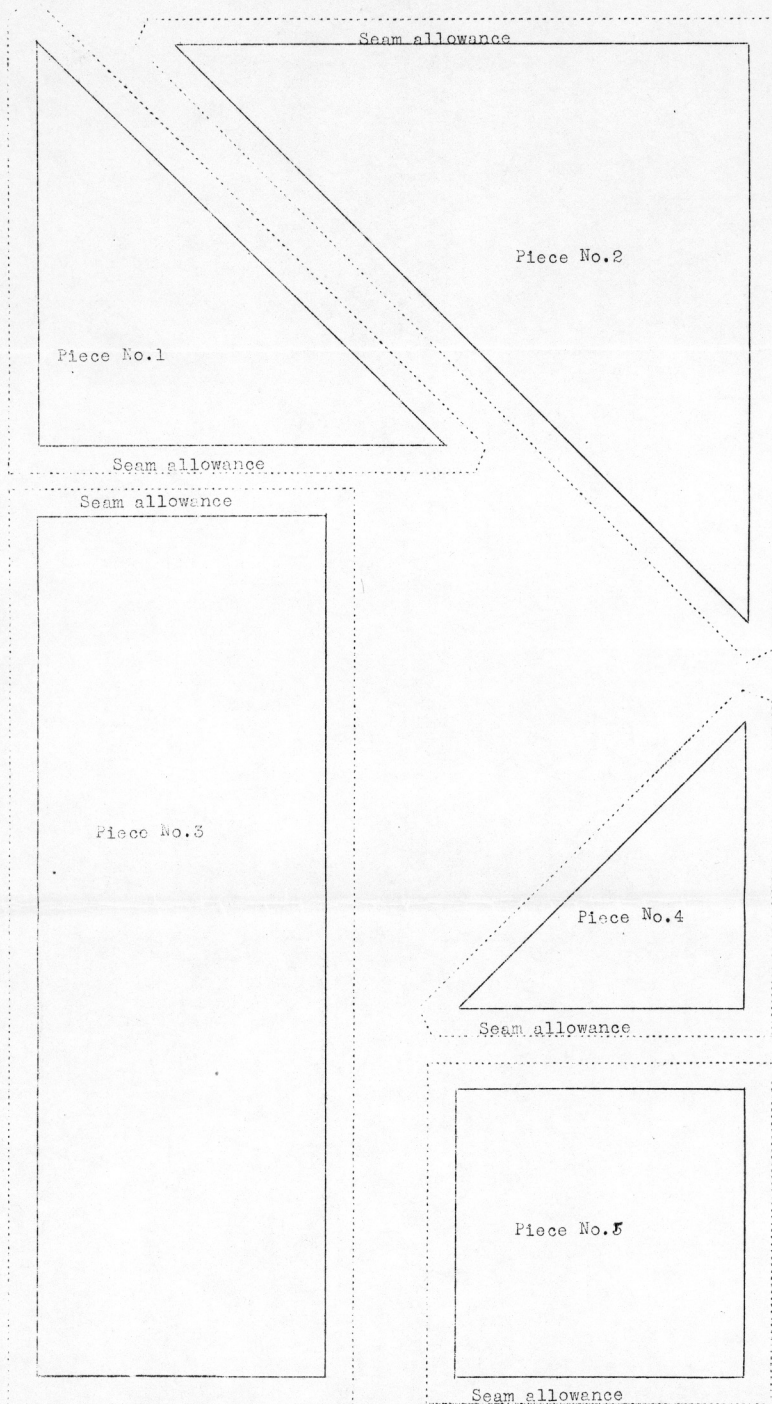
NUMBER OF PIECES TO BE CUT

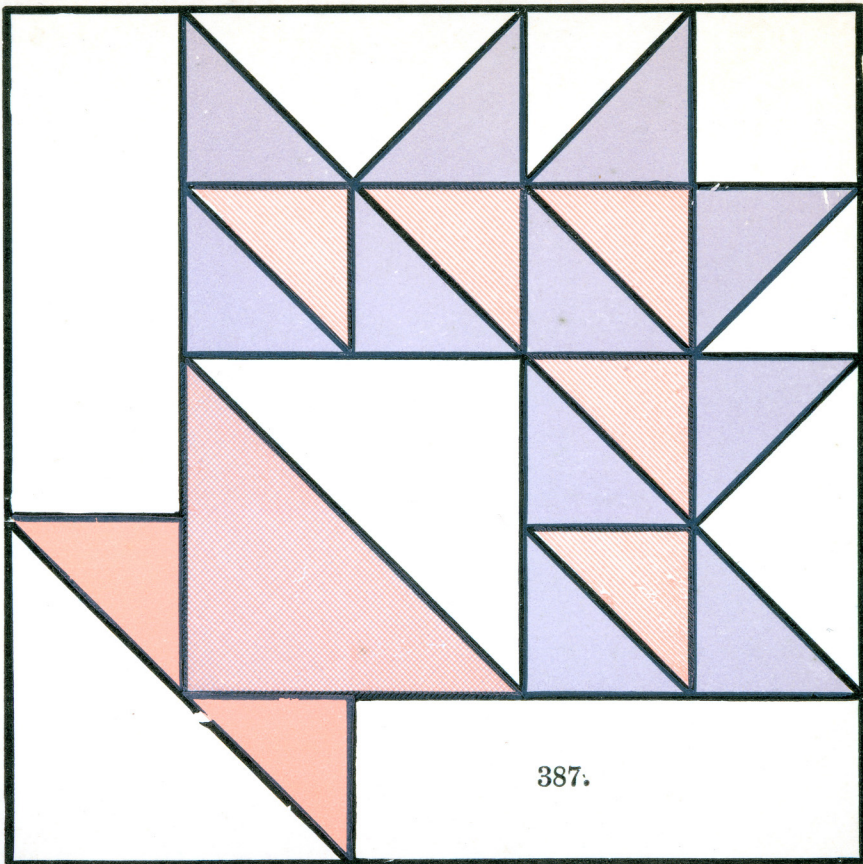
Piece No. 1.....56 white or cream
 " No. 2.....28 light lavender
 " " 2.....56 white or cream
 " " 3.....56 " "
 " " 4.....56 light lavender
 " " 4.....308 dark lavender
 " " 4.....196 white or cream
 " " 5.....28 " "

1 square 13½x13½-inches.....white or cream
 4 strips 7x52½-inches.....light lavender
 4 strips 7x91½-inches.....dark lavender

NOTE Cut strips and square first to get full length size without piecing.

QUILT PATTERN NO. 387-GRAPE BASKET





387.