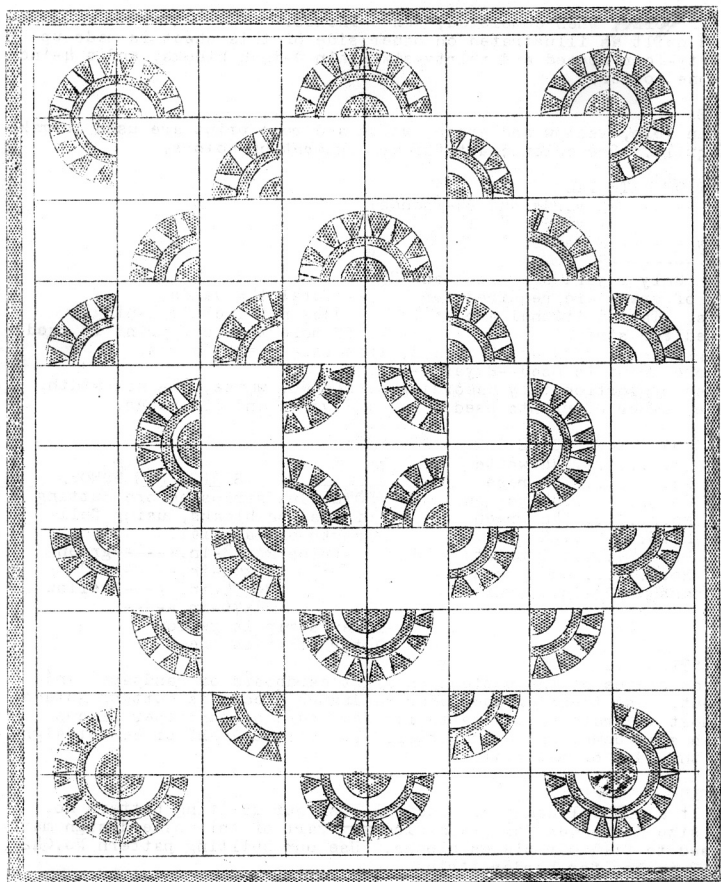


QUILT NO. 145-FAN
 SIZE OF QUILT 80x98-INCHES.



LADIES ART COMPANY-----ST. LOUIS, MISSOURI.

INSTRUCTION SHEET QUILT PATTERN NO.143-FAN.

SIZE OF QUILT, when completed, 80x98-inches.

This quilt as illustrated on other side of this sheet is made up of forty-four pieced and thirty-six plain 9-inch blocks, and a 4-inch two-tone border.

COLORS

Plain rose, yellow and green, white and rose print are used to make this quilt. See color chart for arrangement of colors.

AMOUNT OF MATERIAL

White-----5 yards and 24-inches)
Rose-----1 yard " 14 ")
Yellow-----2 yards " 24 ")
Green-----3 " " 18 ")

NOTE: Only 1 yard of yellow and 2½ yards of green are required for blocks. The additional amount is allowed for strips.) ---Total 14½ yards (Does not include lining)
Rose print---1 yard and 9-inches, if only one print is used---2 yards----) If more than one print is used--
divided proportionately according to the number of prints used.) total-----15½ yards.
LINING, white, 81-inch width, 2 yards and 26-inches.

NUMBER OF PIECES TO BE CUT

Piece No.1.....44 white
" No.2.....44 rose
" No.3.....44 yellow
" No.4.....44 green
" No.5.....132 "
" No.6.....176 print
" No.7.....88 green
36 blocks (9½x9½-in.)..white

STRIPS FOR BORDER

NOTE: Cut strips before cutting pieces for blocks, using full length of material.
2 strips 2½x98-in.-----green
2 " 2½x80-in.----- "
2 " 2½x94-in.-----yellow
2 " 2½x76-in.----- "
Inner strip is yellow
Outer strip is green

SUGGESTIONS FOR CUTTING

Trace pieces of the pattern on light cardboard or sandpaper and cut out. Use these cardboard or sandpaper pieces as cutting guides. The most accurate method is to lay cardboard or sandpaper pieces (rough side down) on the material. Cut all straight pieces straight with the edge of material.

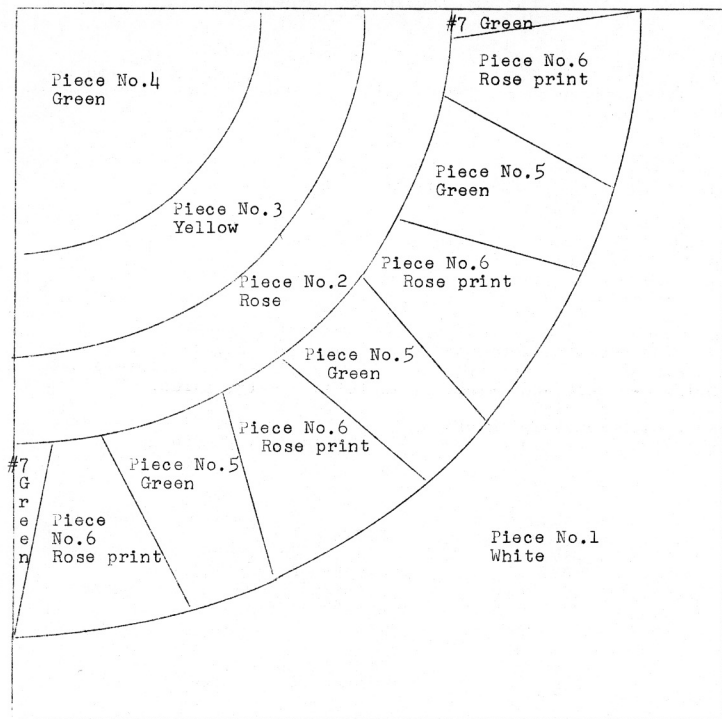
QUILTING

Quilt along all seams of piecing. Use our quilting pattern No. Q75, size 8½-inches for plain blocks. Part of this same design may be used to fill our pieces blocks. Use our quilting pattern No.Q42 size 2-inches for border strips.

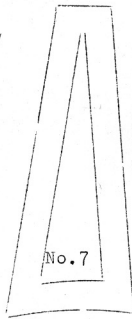
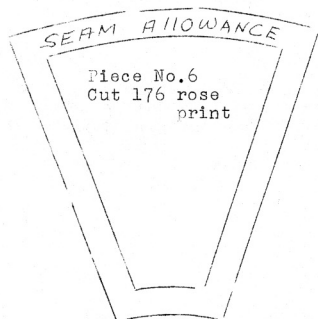
LADIES ART CO.

Since 1889

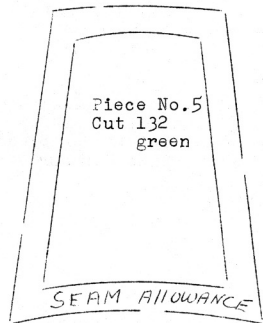
ST. LOUIS, MO.



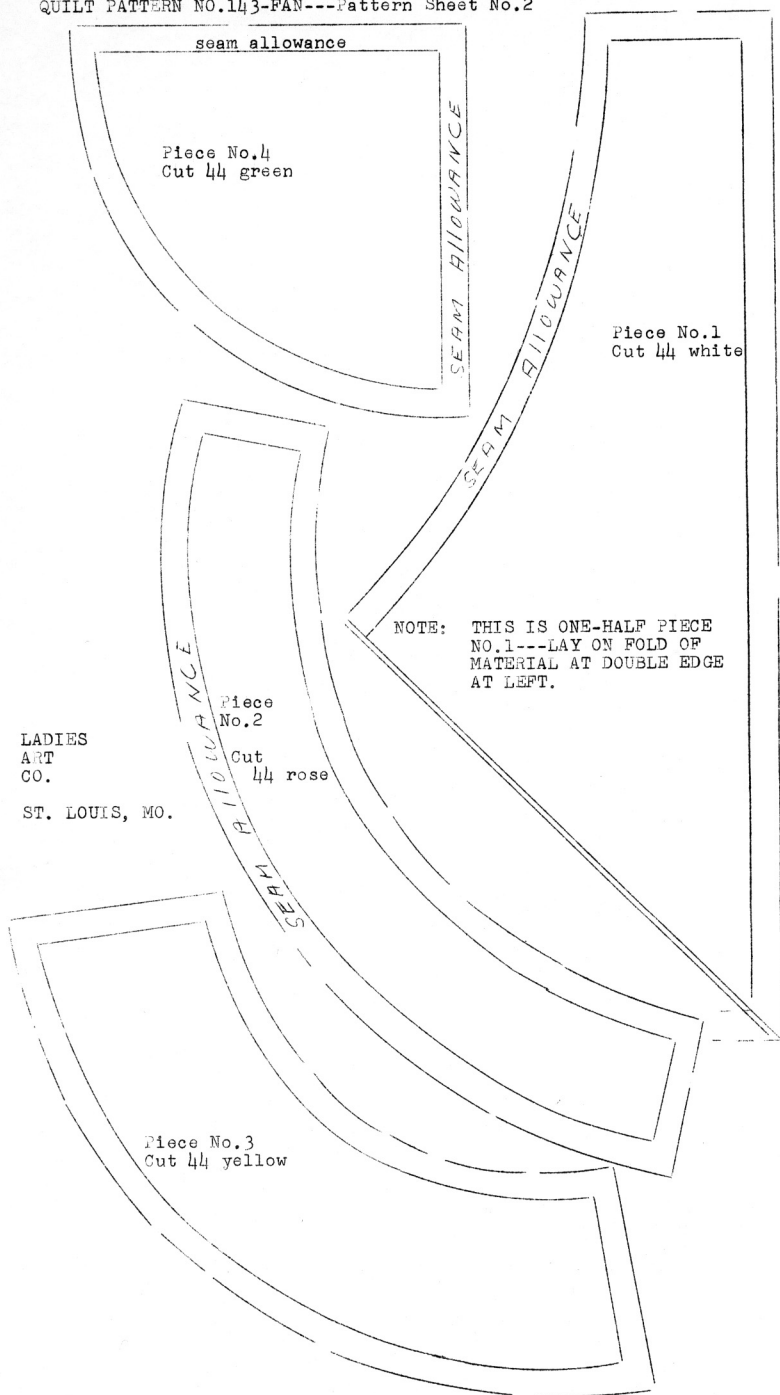
COLOR CHART



Cut 88
green
Piece
No.7



QUILT PATTERN NO.143-FAN---Pattern Sheet No.2



LADIES
ART
CO.

ST. LOUIS, MO.

