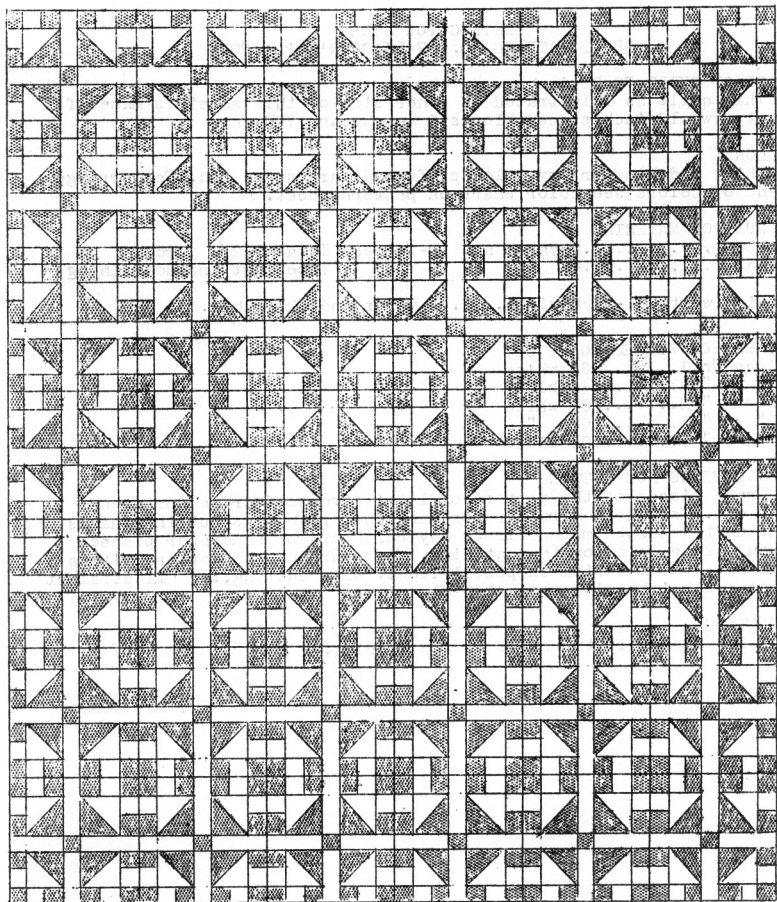


QUILT PATTERN NO.147-LINCOLN'S PLATFORM  
78x91-inches



LADIES ART COMPANY

ST. LOUIS, MISSOURI.

INSTRUCTION SHEET  
QUILT PATTERN NO. 147-LINCOLN'S PLATFORM

SIZE OF QUILT 78x91-inches.

This quilt as illustrated on other side of this sheet is made of forty-two 13-inch pieced blocks, 6 across and 7 down.

COLORS

White and blue (or any color preferred) are suggested. For arrangement of colors see color chart on pattern sheet.

AMOUNT OF MATERIAL

White.....5 yards and 12-inches) Total 9 2/3 yards  
Blue.....4 " " 12 " ) (Does not include lining)

Lining, white, 81-inch width.....2 yards and 19-inches.

NUMBER OF PIECES TO BE CUT

Piece No. 1.....	168	white
" " 2.....	546	blue
" " 2.....	336	white
" " 3.....	168	"
" " 3.....	168	blue

SUGGESTIONS FOR CUTTING

Trace pieces of the pattern on light cardboard or sandpaper and cut out. Use these cardboard or sandpaper pieces as cutting guides. The most accurate method is to lay cardboard or sandpaper pieces (rough side down) on the material. Trace around the pattern with a pencil. Cut material on pencil lines. When cutting, lay all straight pieces straight with the material.

QUILTING

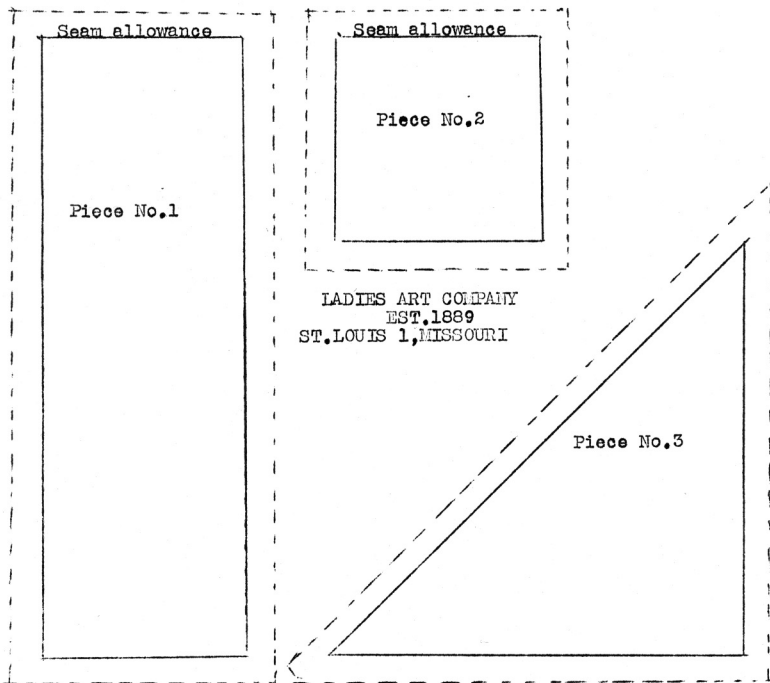
Quilt along all the seams of the piecing.

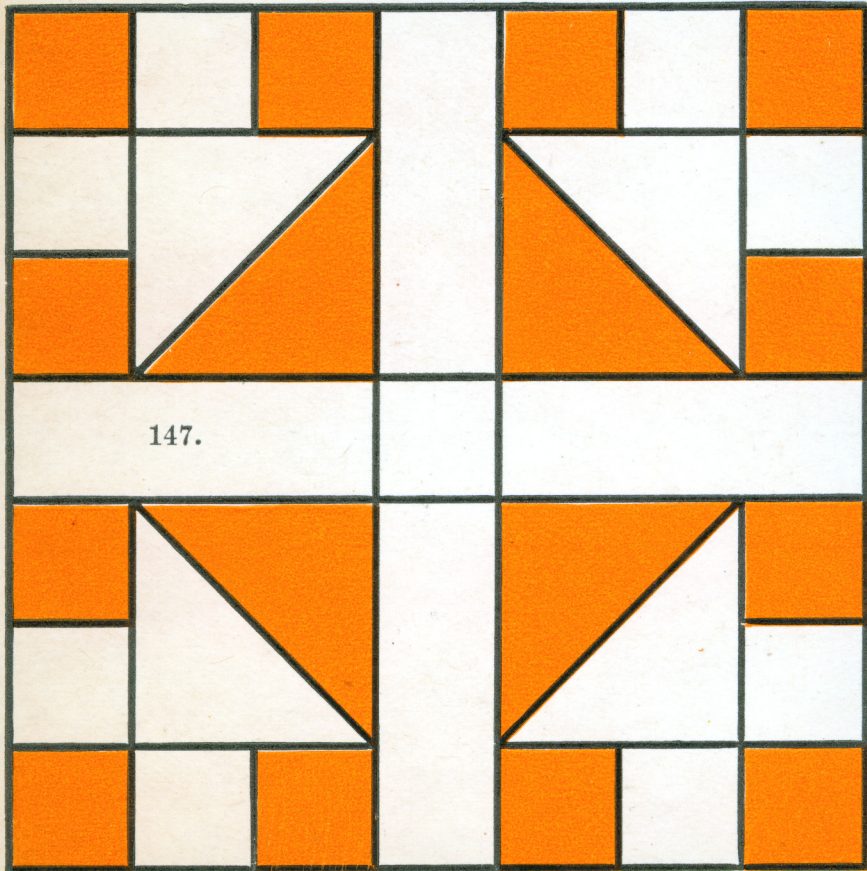
LADIES ART COMPANY-

ST. LOUIS, MISSOURI.

QUILT PATTERN NO. 147-LINCOLN'S PLATFORM  
COLOR CHART

No.2 Blue	No.2 White	No.2 Blue	No.1 White	No.2 Blue	No.2 White	No.2 Blue
No.2 White	No.3 White			No.3 White		No.2 White
No.2 Blue						No.3 Blue
No.1 White			No.2 Blue	No.1 White		
No.2 Blue	No.3 White		No.1 White	No.3 Blue		No.2 Blue
No.2 White						No.3 White
No.2 Blue	No.2 White	No.2 Blue		No.2 Blue	No.2 White	No.2 Blue





147.