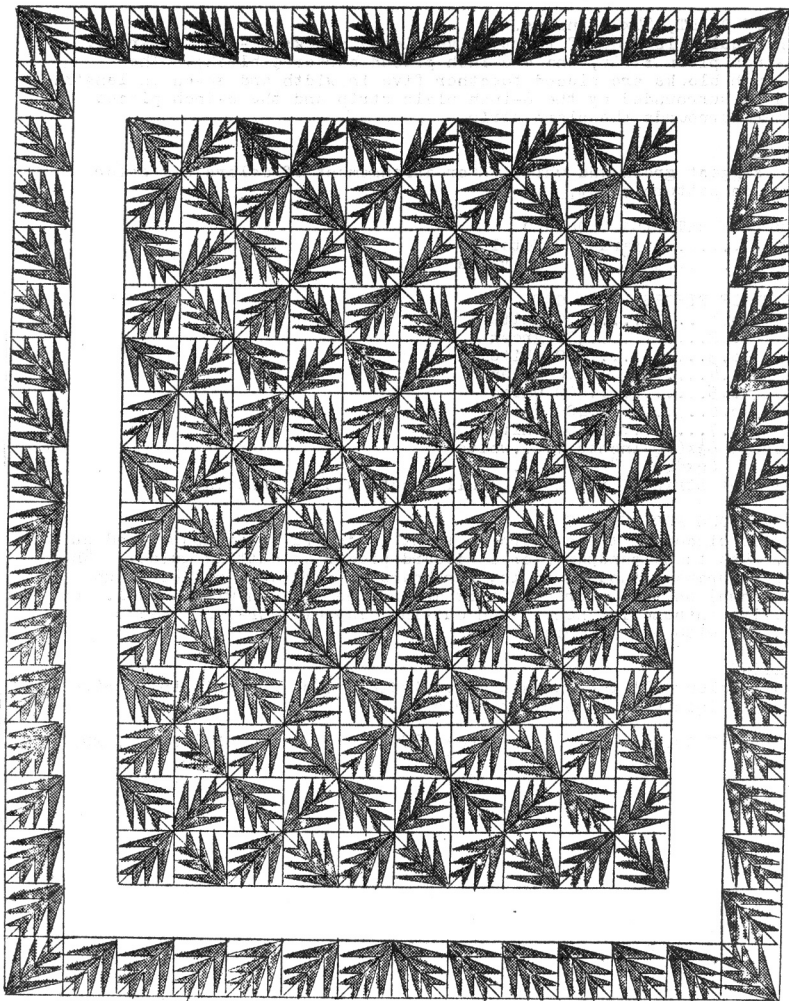


QUILT NO. 461-PALM LEAF  
84x96-inches



LADIES ART CO.

Since-1889

ST. LOUIS, MISSOURI

INSTRUCTION SHEET  
QUILT PATTERN NO. 461-PALM LEAF

SIZE OF QUILT, 84x96-inches.

This quilt is made of thirty-five pieced blocks(12-inch squares), a 6-inch plain strip, and a 6-inch pieced border( $\frac{1}{2}$ -block). The 12-inch blocks are pieced together five in width and seven in length. This is surrounded by the 6-inch plain strip and the 6-inch pieced border surrounds the plain strip.

COLORS

We suggest green and white. For arrangement of colors see color chart on pattern sheet.

AMOUNT OF MATERIAL REQUIRED

White.....9 yards)	Total
Green.....5 " )	14 yards

NUMBER OF PIECES TO BE CUT

Piece No.1.....	400	white
" No.2.....	400	green
" No.3.....	400	white
" No.4.....	400	green
" No.5.....	400	white
" No.6.....	400	green
" No.7.....	400	white
2 strips $6\frac{1}{2}$ x $60\frac{1}{2}$ -inches.....		white
2 " $6\frac{1}{2}$ x $84\frac{1}{2}$ " .....		"

NOTE: Cut strips first to get full length without piecing.

SUGGESTIONS FOR CUTTING

Trace pieces of the pattern on light cardboard or sandpaper and cut out. Use these sandpaper or cardboard pieces as cutting guides. The most accurate method is to lay cardboard or sandpaper pieces(rough side down) on the material. Mark around the pattern with pencil. Cut material on pencil lines. When cutting, lay all straight pieces straight with the material.

QUILTING

Quilt along all the seams of the piecing. Use our quilting design No. Q45(5-inch width) on plain strip.

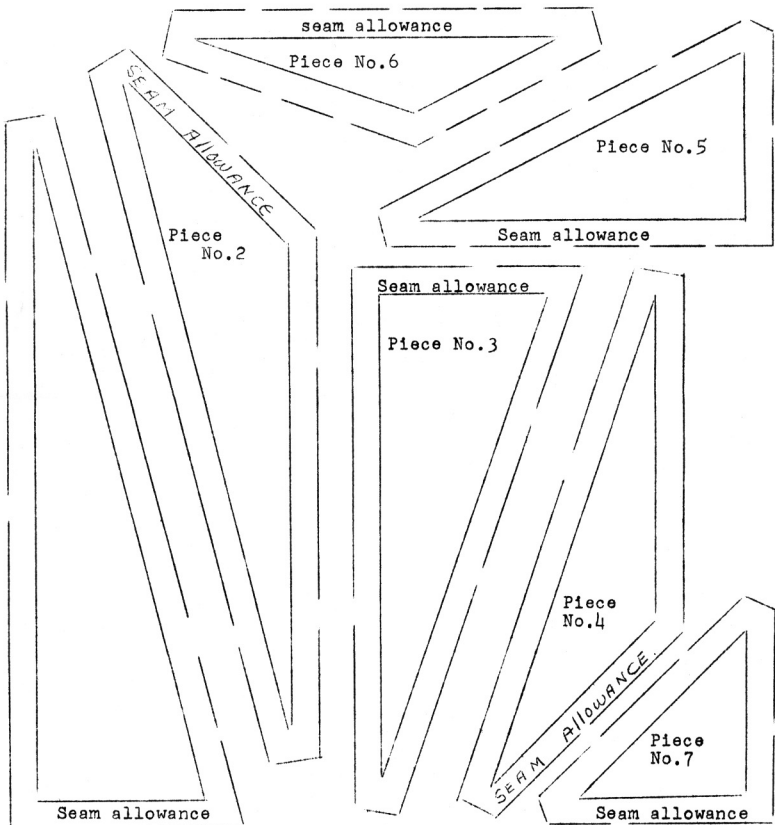
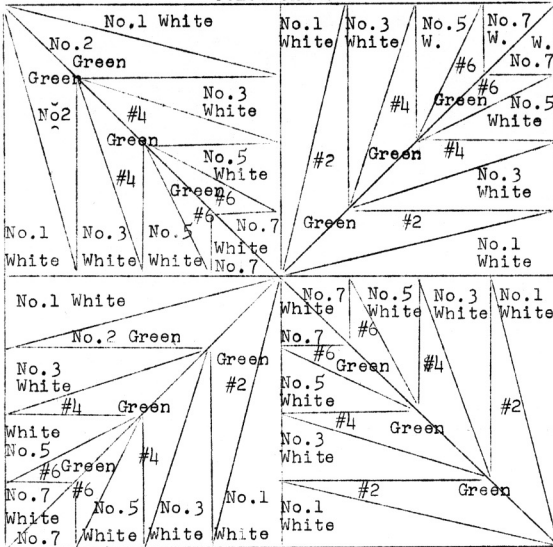
LADIES ART CO.

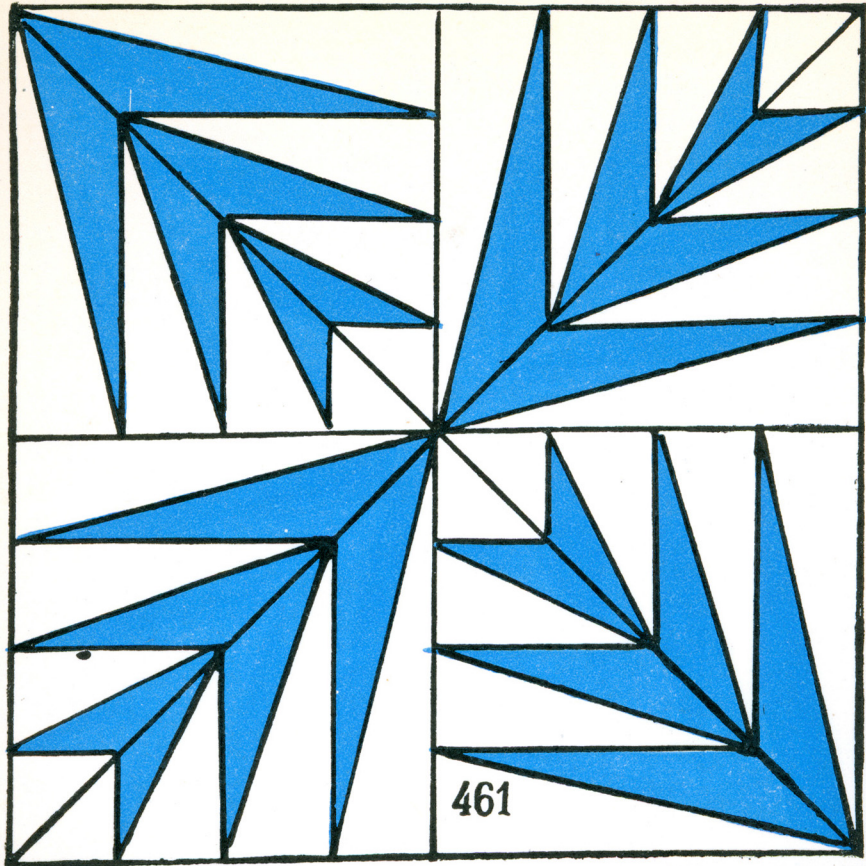
Since-1889

ST. LOUIS, MO.

QUILT PATTERN NO.461-PALM LEAF

COLOR CHART





461