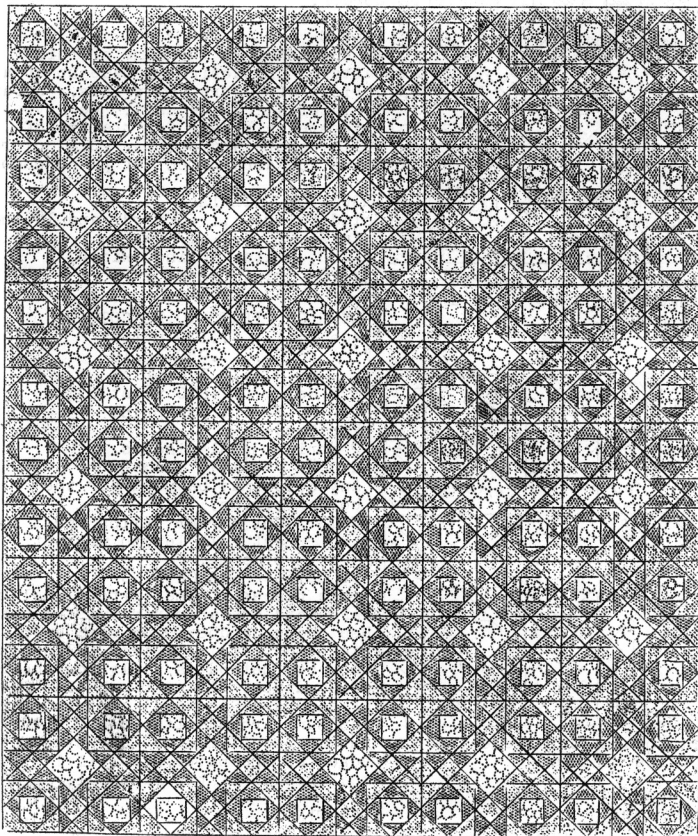


QUILT PATTERN NO.146 - JOSEPH'S COAT

This quilt as illustrated below is made up of thirty 15-inch pieced blocks and a 3-inch plain border.



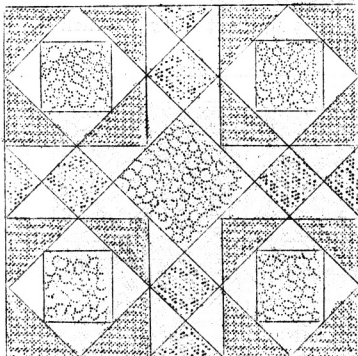
SIZE OF QUILT-81x96-inches

LADIES ART CO.

Since-1889

ST. LOUIS, MISSOURI

QUILT PATTERN NO.146--JOSEPH'S COAT--INSTRUCTIONS



Finished block showing the arrangement of the solid and print pieces.

SIZE OF QUILT 81x96-inches.
This quilt is made up of 30 fifteen inch pieced blocks set five in width and six in length with a 3-inch plain border.

COLORS

As suggested by the name of this pattern, the design is made up of a variety of colors and prints. Scraps of material can be used. We have suggested a scheme for the use of solid colors and prints. See color chart for arrangement of piece numbers.

AMOUNT OF MATERIAL

Solid Colors.....5 yards and 18 inches
Prints.....7 yards
LINING, white, 90 inch width,
2 yards and 27 inches.

NUMBER OF PIECES TO BE CUT

Piece No.1.....120 print
" No.2.....960 solid
" No.3.....120 print
" No.4.....480 print
" No.5.....30 print

For Border

2 strips $3\frac{1}{2} \times 81\frac{1}{2}$ inches
2 " $3\frac{1}{2} \times 97\frac{1}{2}$ inches

Any color may be used for the border strips.

NOTE: Cut border strips first to get full length without piecing.

SUGGESTIONS FOR CUTTING

Trace pieces of the pattern on light cardboard or sandpaper and cut out. Use these cardboard or sandpaper pieces as cutting guides. The most accurate method is to lay cardboard or sandpaper pieces(rough side down if sandpaper is used) on the material and mark around with pencil. Cut out on pencil lines. Lay straight edges of the pattern parallel with the threads of the material.

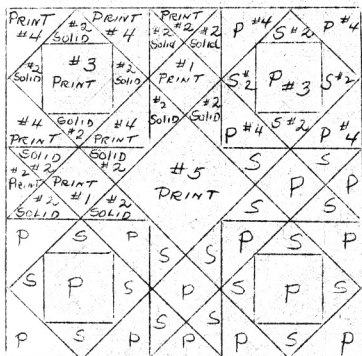


Chart showing arrangement of the piece numbers.

LADIES ART CO.
ST. LOUIS, MISSOURI

Since-1889

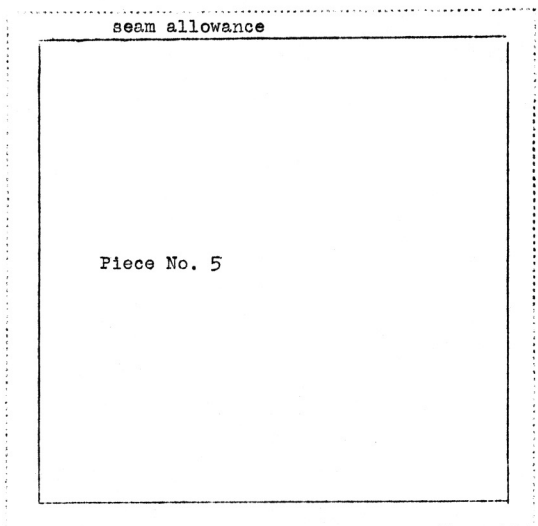
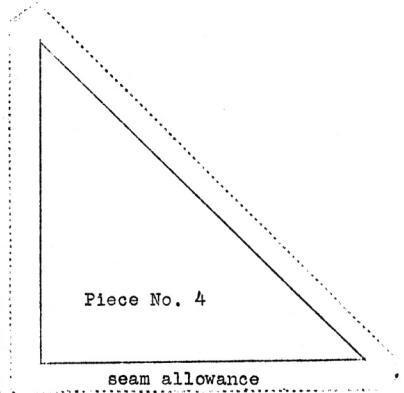
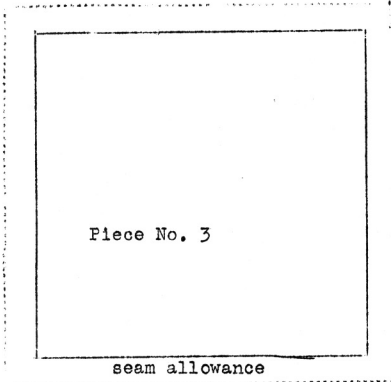
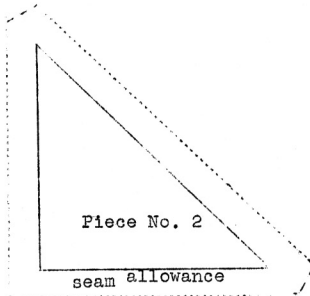
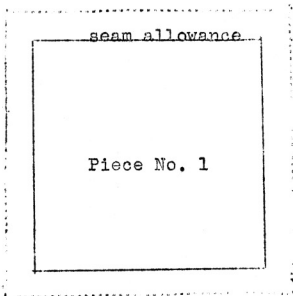
QUILTING

Quilt along all the seams of the piecing. Use our quilting design No.Q 45, the 2 inch size, on border.

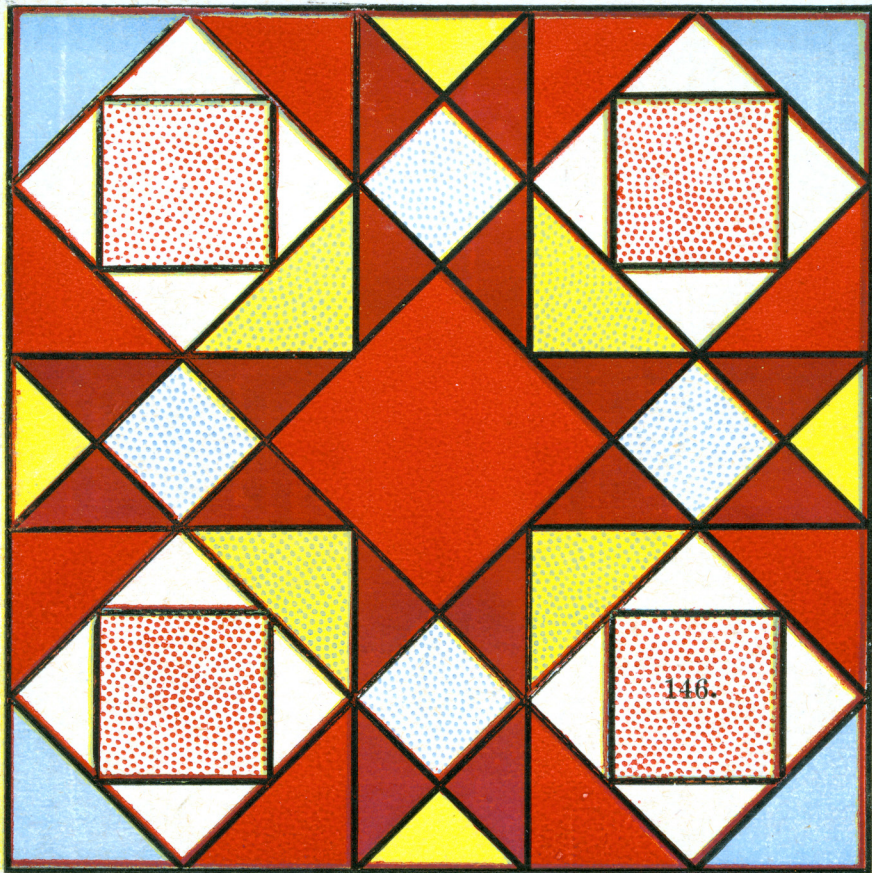
QUILT PATTERN NO. 146

JOSEPH'S COAT

PATTERN SHEET



LADIES ART CO.
ST. LOUIS, MO.



146