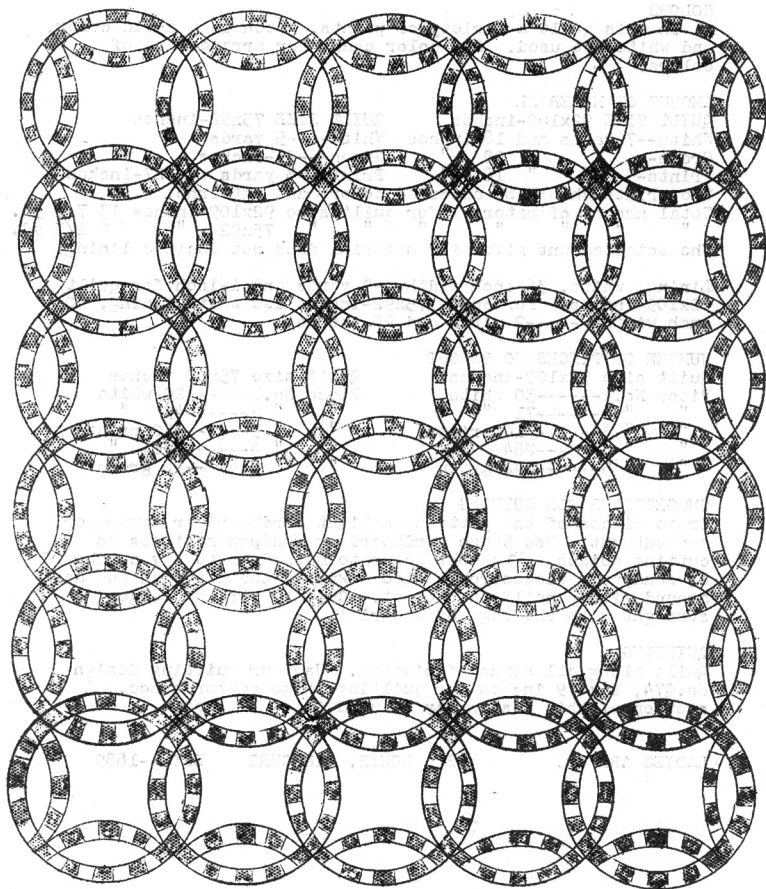


QUILT NO. 512-DOUBLE WEDDING RING
FULL SIZE 92x109-inches
and
TWIN SIZE 75x92-inches



QUILT INSTRUCTION SHEET

QUILT PATTERN NO. 512--DOUBLE WEDDING RING

SIZE OF QUILT--when completed, large size 92x109-inches;
twin bed size, 75x92-inches.

COLORS

In this quilt a variety of prints, green in a solid color, and white are used. See color chart for arrangement of colors.

AMOUNT OF MATERIAL

QUILT SIZE 92x109-inches

White--7 yards and 18-inches

Green-- " " 28 "

Prints--5 " " 18 "

QUILT SIZE 75x92-inches

White---5 yards

Green---21-inches

Prints--3 yards and 27-inches

The prints should be assorted colors and patterns.

Total amount of material for quilt size 92x109-inches 13 7/9 yd.

" " " " 75x92 " " 9 1/3 yd.

The total amount given for material does not include lining.

Lining, white, 36-inch width---9 yards and 1-inch for quilt 92x109-inches. For quilt 75x92-inches use white lining, 80 inch width-----2 yards and 20-inches.

NUMBER OF PIECES TO BE CUT

Quilt size 92x109-inches

Piece No. 1-----30 white

" " 2-----71 "

" " 3-----710 prints

" " 4-----284 "

" " 5-----142 green

Quilt size 75x92 inches

Piece No. 1-----20 white

" " 2-----49 "

" " 3-----490 prints

" " 4-----196 "

" " 5-----98 green

SUGGESTIONS FOR CUTTING

Trace pieces of the pattern on light cardboard or sandpaper, and cut out. Use these cardboard or sandpaper pieces as cutting guides. The most accurate method is to lay cardboard or sandpaper pieces (rough side down) on the material and mark around with pencil and cut out. Cut all straight edges straight with the edge of material.

QUILTING

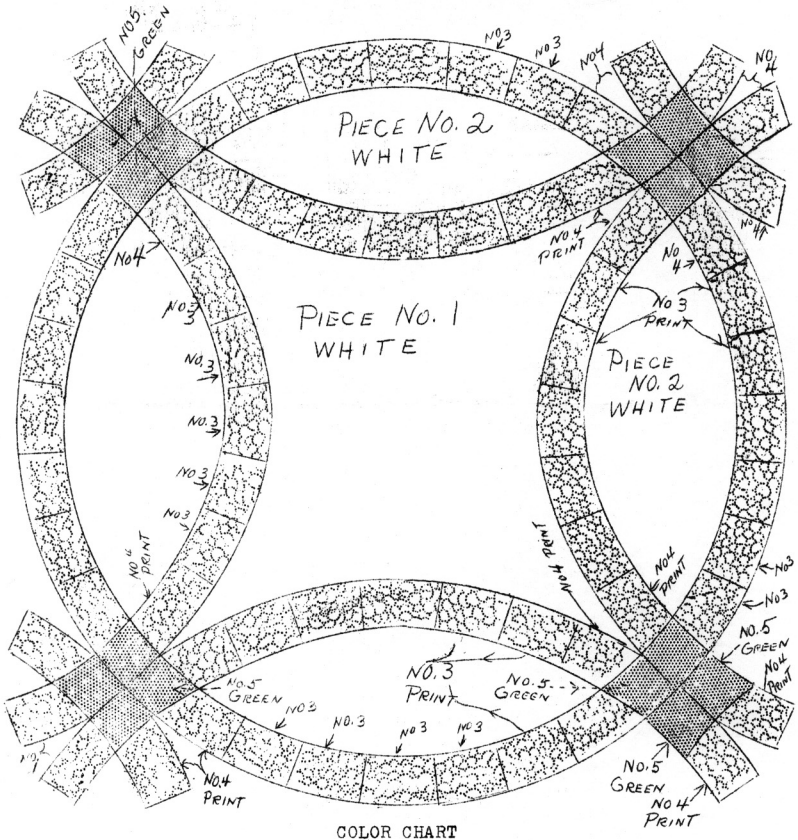
Quilt along all seams of piecing. Use our quilting design No. 374, size 9 inches for quilting large center space. A section of this design may be used in oval space.

LADIES ART CO.

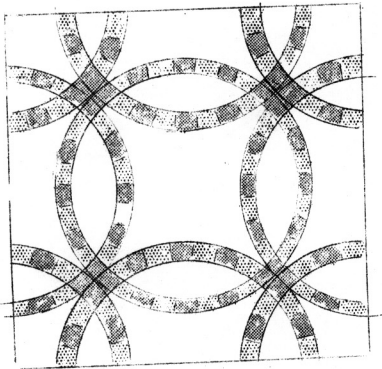
ST. LOUIS, MISSOURI

EST.--1889

QUILT PATTERN NO. 512--DOUBLE WEDDING RING--PATTERN SHEET NO. 1

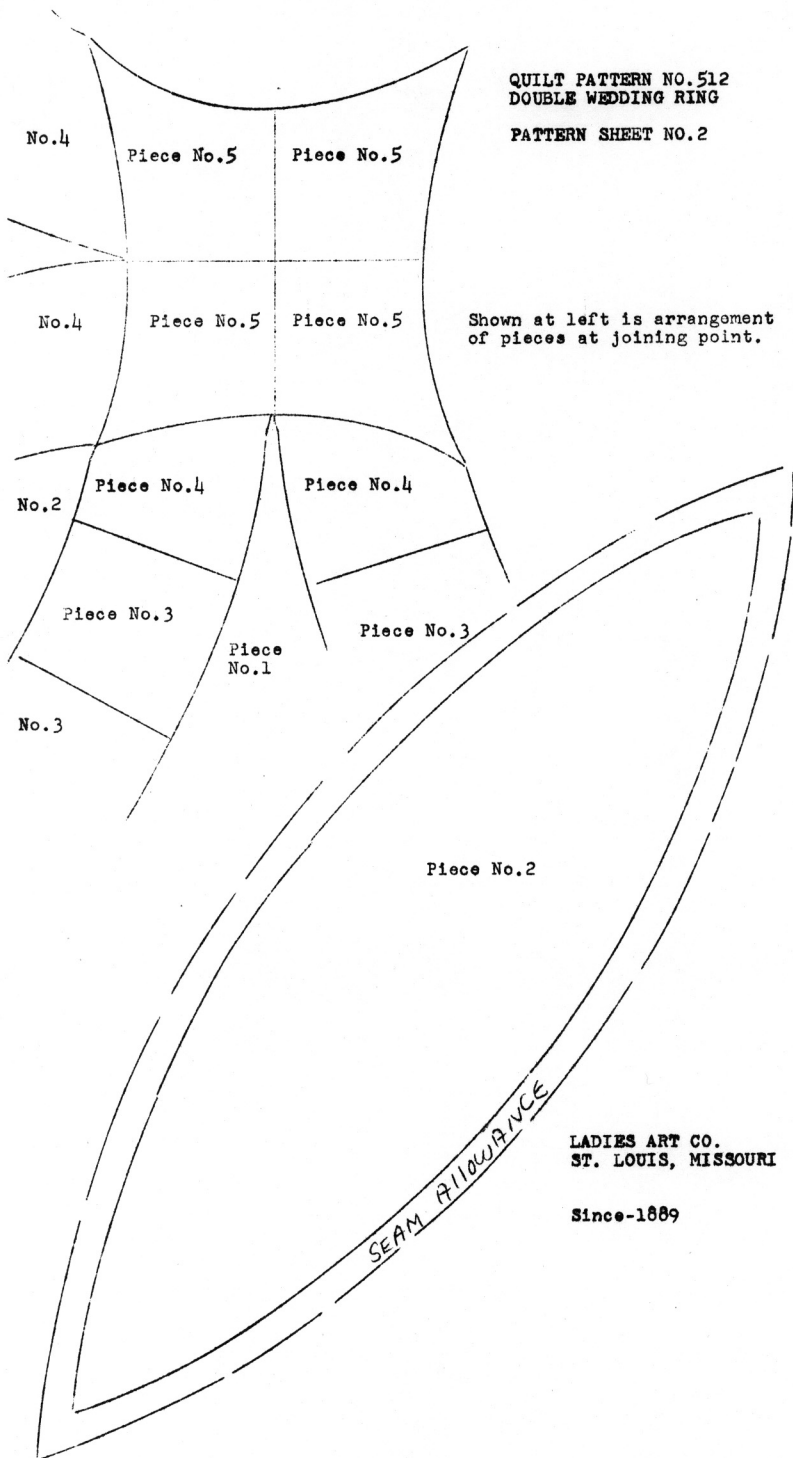


As shown, we suggest green and a harmonizing print or assortment of prints. If desired, any combination may be substituted. Two colors make an attractive quilt. Select a dark color for the joining point (Piece No. 5) and alternate this color with a lighter color on the ring.



QUILT PATTERN NO. 512
DOUBLE WEDDING RING

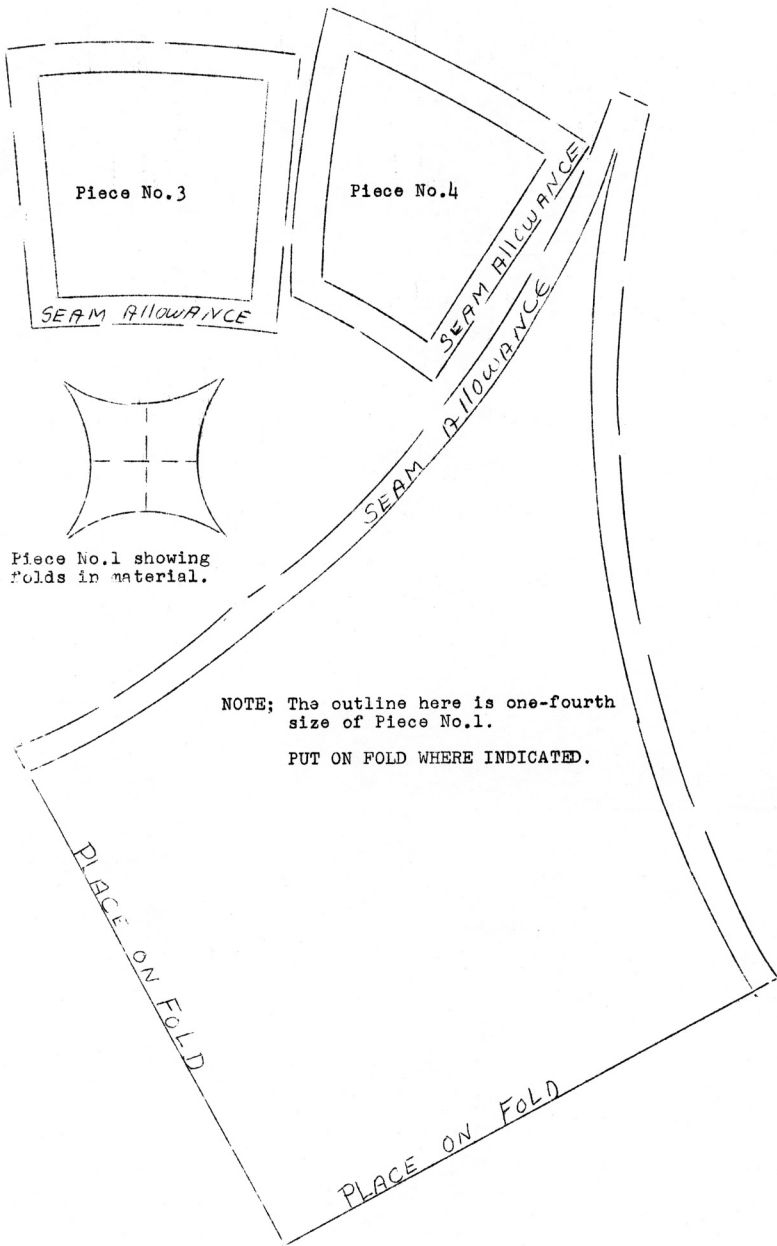
PATTERN SHEET NO. 2



LADIES ART CO.
ST. LOUIS, MISSOURI

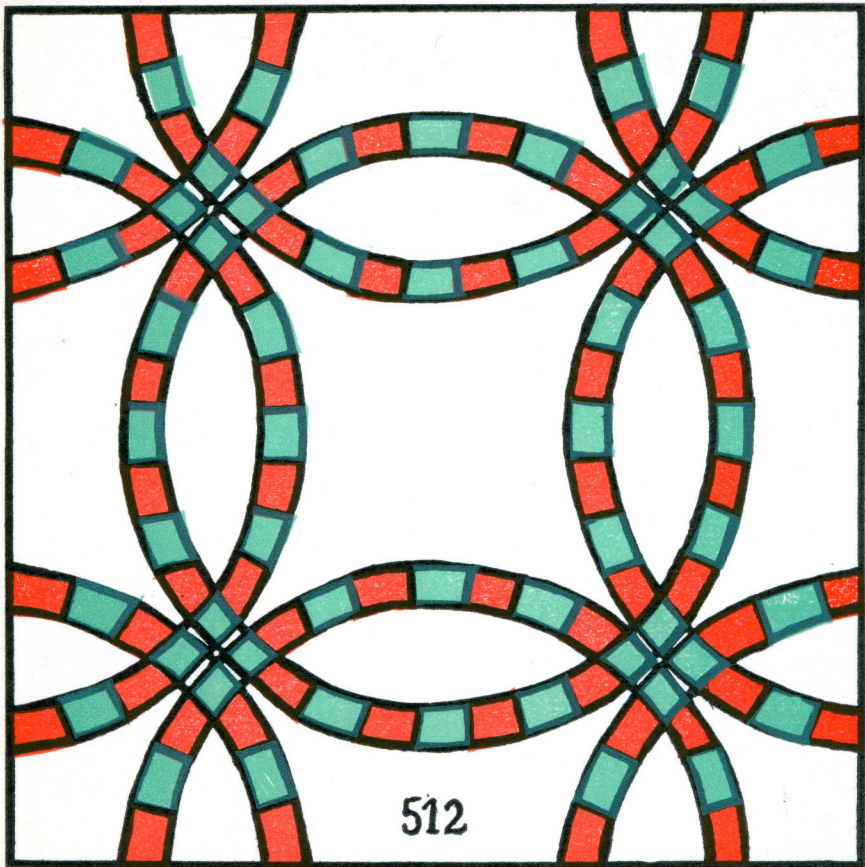
Since-1889

QUILT PATTERN NO. 512--DOUBLE WEDDING RING--PATTERN SHEET NO. 3



NOTE; The outline here is one-fourth size of Piece No.1.

PUT ON FOLD WHERE INDICATED.



512