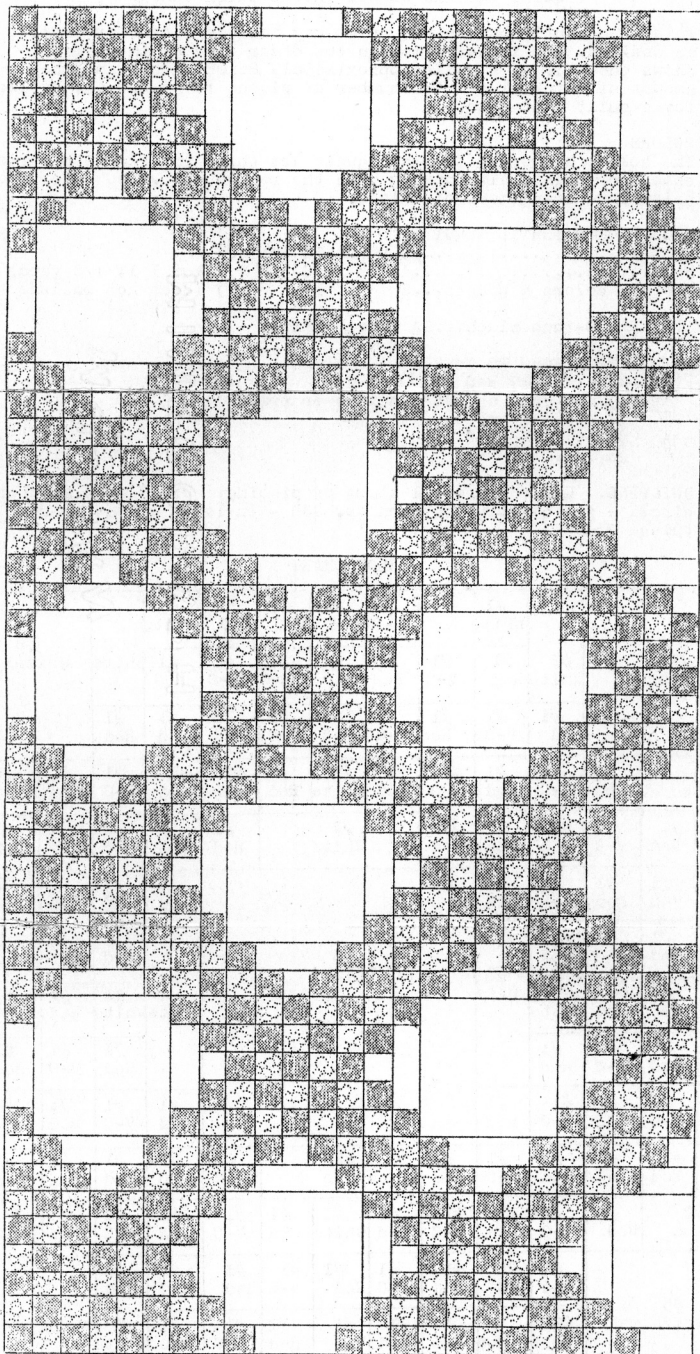


QUILT PATTERN NO. 541-TRIPLE IRISH CHAIN  
SIZE 86x86



(Half of quilt is shown)

INSTRUCTION SHEET.  
QUILT PATTERN NO. 541-TRIPLE IRISH CHAIN.

This is a continuous so the quilt may be made larger or smaller as desired. The illustration on the other side of this sheet shows one-half of a quilt approximately 86x96 inches and the amount of material and the number of pieces to be cut are estimated for a quilt that size.

**COLORS**

The colors suggested for this quilt are white and red with various colors or prints alternating with the red squares. See color chart below for arrangement of colors.

**AMOUNT OF MATERIAL REQUIRED**

White.....3 yards, 18 inches)  
 Red.....4 " , 6 " ) Total 11 1/6 yards  
 Various colors & prints...3 " 18 " ) (does not include lining)

LINING, 90-inch width...2 1/2 yards, white.

**NUMBER OF PIECES TO BE CUT**

Piece #1.....817 Red  
 " #1.....612 assorted colors or prints  
 " #1..... 84 white  
 " #2..... 96 "  
 " #3..... 24 "

QUILTING. Quilt along all seams of piecing. Use 8-inch feather circle - our quilting pattern No. Q30 - in large white square (piece #3).

COLOR CHART

#3 White		#2 White		#1 White	#1 Red	#1 V-C	#1 Red	#1 V-C	#1 Red	#1 White	#2 White		#3 White	
				#1 Red	#1 V-C	#1 Red	#1 V-C	#1 Red	#1 V-C					
				#1 Red	#1 V-C	#1 Red	#1 V-C	#1 Red	#1 V-C					
#2 White	#1 Red	#1 V-C	#1 Red	#1 V-C	#1 Red	#1 White	#1 Red	#1 V-A	#1 Red	#1 V-C	#1 V-C	#1 Red	#1 White	#2 White
#1 White	#1 Red	#1 V-C	#1 Red	#1 V-C	#1 Red	#2 White		#1 Red	#1 V-C	#1 Red	#1 V-C	#1 Red	#1 V-C	#1 Red
#1 Red	#1 V-C	#1 Red	#1 V-C	#1 Red	#3 White				#1 Red	#1 V-C	#1 Red	#1 V-C	#1 Red	#1 V-C
#1 V-C	#1 Red	#1 V-C	#1 Red	#2 White		#3 White				#1 Red	#1 V-C	#1 Red	#1 V-C	#1 Red
#1 Red	#1 V-C	#1 Red	#1 White	#1 White	#3 White				#1 White	#1 White	#1 Red	#1 V-C	#1 Red	#1 V-C
#1 V-C	#1 Red	#1 V-C	#1 Red	#3 White				#1 Red	#1 V-C	#1 Red	#1 V-C	#1 Red	#1 V-C	#1 Red
#1 Red	#1 V-C	#1 Red	#1 V-C	#1 Red	#3 White				#1 Red	#1 V-C	#1 Red	#1 V-C	#1 Red	#1 V-C
#1 V-C	#1 Red	#1 V-C	#1 Red	#1 V-C	#1 Red	#2 White		#1 Red	#1 V-C	#1 Red	#1 V-C	#1 Red	#1 V-C	#1 Red
#2 White		#1 Red	#1 V-C	#1 Red	#1 V-C	#1 Red	#1 White	#1 Red	#1 V-C	#1 Red	#1 V-C	#1 Red	#1 V-C	#2 White
#3 White			#1 Red	#1 V-C	#1 Red	#1 V-C	#1 Red	#1 V-C	#1 Red	#1 V-C	#1 Red	#3 White		
#3 White			#2 White	#1 Red	#1 V-C	#1 Red	#1 V-C	#1 Red	#1 V-C	#1 Red	#2 White	#3 White		

Abbreviation - V-C, various colors or prints

QUILT PATTERN NO. 541-TRIPLE IRISH CHAIN

