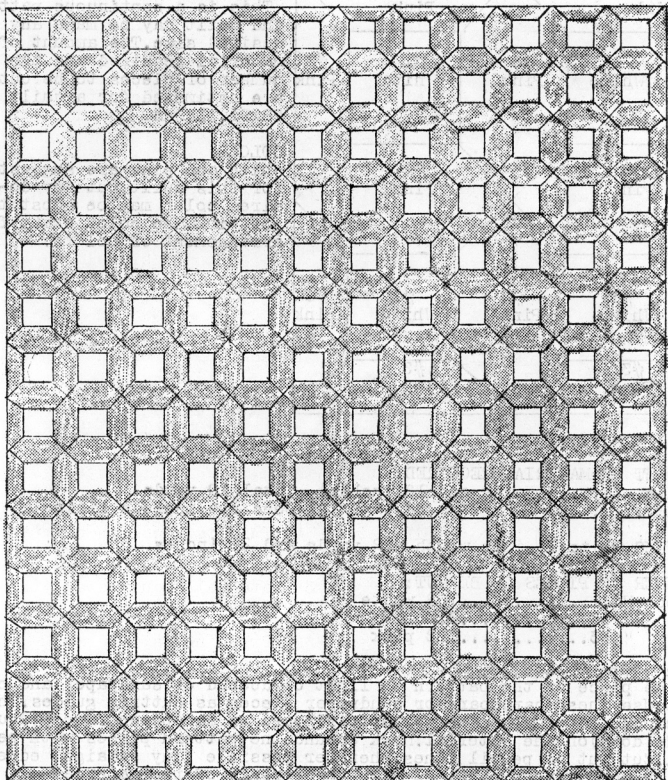


QUILT PATTERN NO. 166 - GRANDMOTHER'S OWN

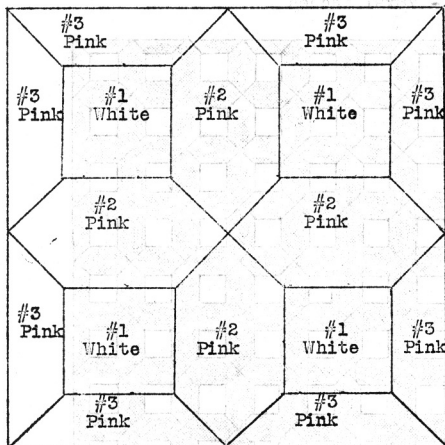
SIZE OF QUILT - 78x91 inches



LADY'S ART COMPANY EST. 1899 ST. LOUIS 1, MISSOURI

QUILT PATTERN NO. 166 - GRANDMOTHER'S OWN
INSTRUCTION SHEET

SIZE OF QUILT, 78x91 inches



This is a continuous pattern and quilt may be made any desired size. The amount of material required and the number of pieces to be cut are estimated for a quilt 78x91 inches.

COLORS:

White and pink are suggested for this quilt, but any desired color may be substituted for pink. See color chart for arrangement of colors.

COLOR CHART

AMOUNT OF MATERIAL REQUIRED:

White.....2 yards and 12 inches) Total 10 yards.
Pink.....7 " " 24 ") (Does not include lining)

LINING, white, 81-inch width - 2 yards and 20 inches

NUMBER OF PIECES TO BE CUT:

Piece No. 1.....168 white
" " 2.....310 pink
" " 3.....52 pink

SUGGESTIONS FOR CUTTING:

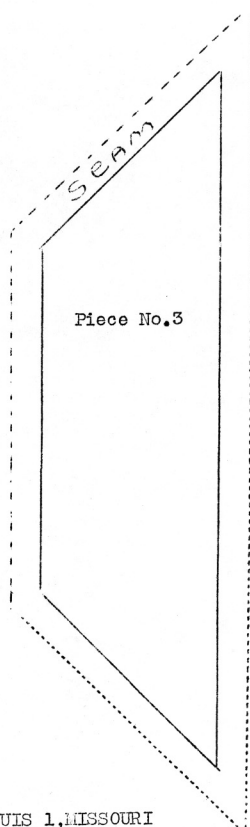
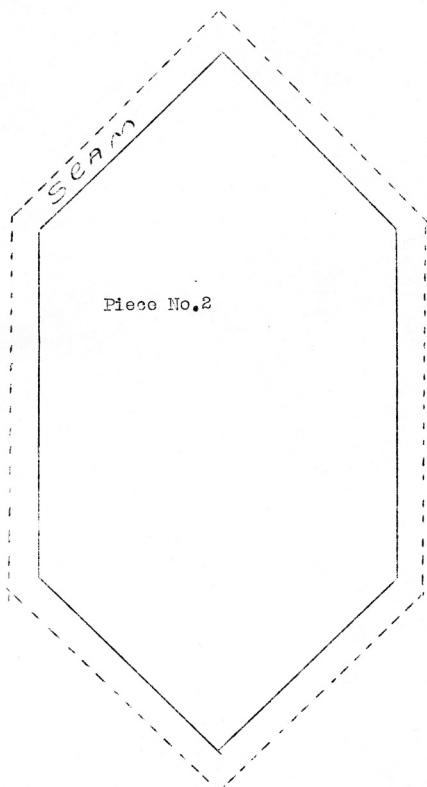
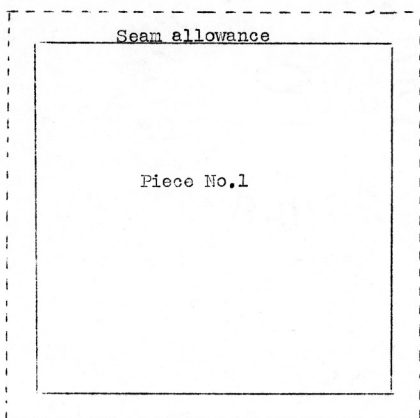
Trace piece of the pattern on light cardboard or sandpaper and cut out. Use these cardboard or sandpaper pieces as cutting guides. The most accurate method is to lay cardboard or sandpaper pieces (rough side down) on the material. Mark around the pattern pieces with pencil. Cut out on pencil lines. Whenever possible, lay straight edges of pattern pieces parallel with the threads of the material.

QUILTING:

Quilt along all seams of the piecing. If more quilting is desired other lines of quilting may be done three-fourths of an inch or one inch from seams.

QUILT PATTERN NO.166 - GRANDMOTHER'S OWN

PATTERN SHEET





166.