

QUILT PATTERN NO.118-CROW'S

FOOT-INSTRUCTION SHEET

SIZE OF QUILT--72x87-inches

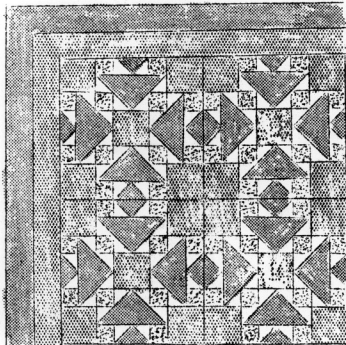
This quilt is made up of twenty 15-inch pieced blocks arranged four in width and five in length and a border consisting of two 3-inch strips, the outer strip dark blue and the inner one medium blue.

COLORS

Dark blue, medium blue, light blue and white are suggested. See color chart for arrangement. Any three harmonizing colors may be used.

MATERIAL REQUIRED

Dark blue..... $3\frac{1}{2}$  yards  
 Medium blue.... $4\frac{1}{2}$  yards  
 Light blue..... $1\frac{3}{4}$  yards  
 White..... $1\frac{1}{2}$  yards



Corner Of Completed Quilt

NUMBER OF PIECES TO BE CUT

Piece No.1.....480 white  
 " No.2.....240 light blue  
 " No.3.....100 medium blue  
 " No.4.....80 dark blue  
 " No.5.....80 dark blue

2 strips  $72\frac{1}{2} \times 3\frac{1}{2}$ -inches.....dark blue )  
 2 "  $66\frac{1}{2} \times 3\frac{1}{2}$ -inches.....medium blue ) NOTE: Cut strips first to  
 2 "  $87\frac{1}{2} \times 3\frac{1}{2}$ -inches.....dark blue ) get full length without  
 2 "  $81\frac{1}{2} \times 3\frac{1}{2}$ -inches.....medium blue ) piecing.

QUILTING

Quilt along all seams of the piecing. Use our quilting design No. Q46(5-inch width) for the six inch border.

Quilt about 1 inch from seams on large pieces.

SUGGESTIONS FOR CUTTING

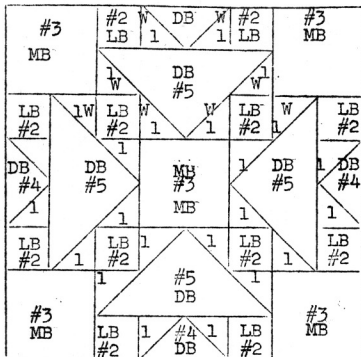
Trace pieces of the pattern on light cardboard or sandpaper and cut out. Use these cardboard or sandpaper pieces as pattern for cutting guides. The most accurate method is to lay pattern on material(rough side down if sandpaper is used) and mark around pattern with pencil. Cut out on pencil lines. Whenever possible lay straight edges of patterns parallel with the threads of the material.

LADIES ART CO.

Since 1889

ST. LOUIS, MO.

QUILT PATTERN NO.118-CROW'S FOOT--PATTERN SHEET



COLOR CHART

Piece No.1 is white  
 LB--light blue  
 DB--dark blue  
 MB--medium blue

