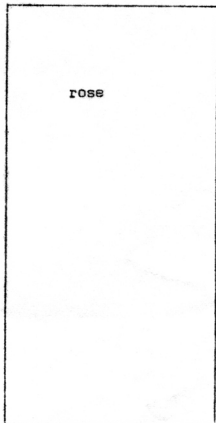
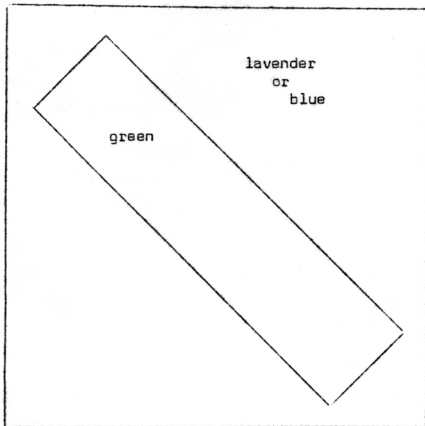
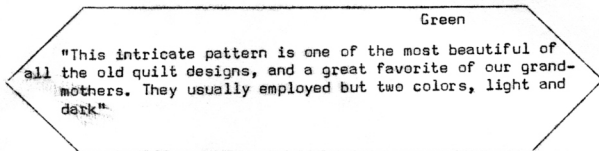
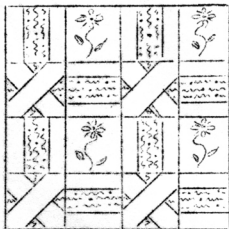
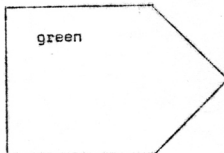
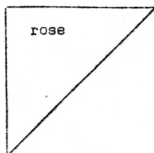


GARDEN MAZE

Kansas City
Star - 1932

"The Garden Maze is From Colonial Design"



"A more modern development is to use a single flower center for each 4" square, either all alike or all different. Then choose a striped or trailing vine effect for the pieces marked rose. The lattice is green. The result is charming. Note that a section of the quilt is shown, NOT A BLOCK - as this pattern must be building up row after row until the desired size is reached. ALLOW FOR SEAMS."

BARBARA BANNISTER
1965

BEL AIR NEEDLECRAFTS

JOHANNESBURG, MICH.