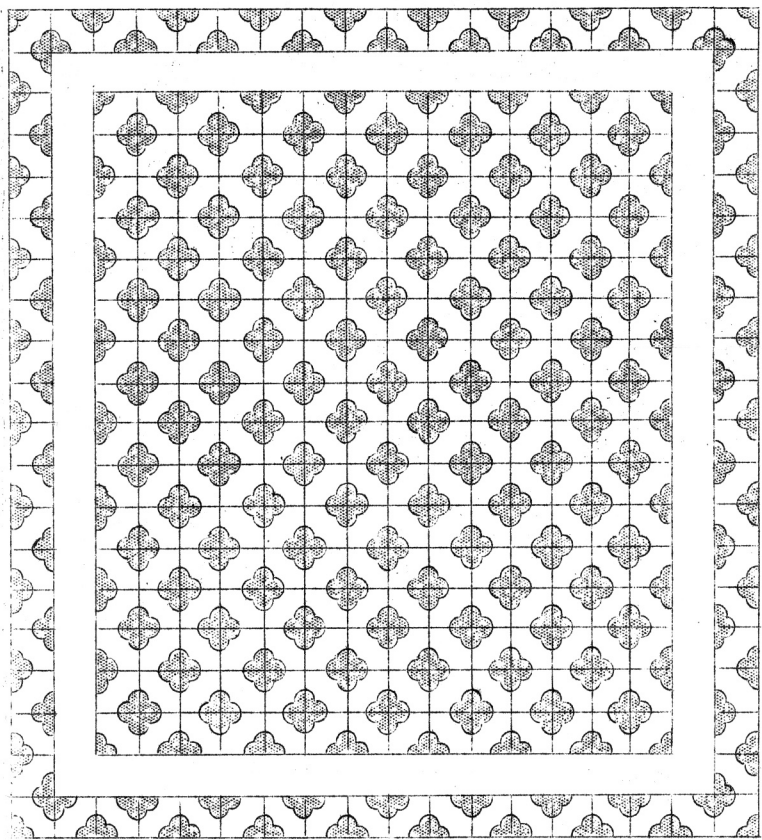


HEARST & GIZZARDOS
OR

QUILT PATTERN NO. 125-WILD ROSE LANE
81 x 90 inches



LADIES ART CO.-----3837 PINNEY AVE.-----ST. LOUIS, MO.

Box 1516

INSTRUCTION SHEET
QUILT PATTERN NO. 125-WILD ROSE LANE

SIZE OF QUILT, when completed - 81 x 90 inches
This quilt as illustrated on the other side of this sheet is made up of fifty-six 9-inch pieced blocks, a $4\frac{1}{2}$ -inch plain strip and a $4\frac{1}{2}$ -inch pieced border(made of half blocks).

COLORS

Two shades of pink-a very light and a deep shade-are suggested for this design. See color chart for arrangement of colors.

AMOUNT OF MATERIAL

Light pink -----8 yards and 12 inches) 10 $\frac{2}{3}$ yards
Deep pink -----2 " " 12 ") (Does not include lining)

NUMBER OF PIECES TO BE CUT.

Piece No. 1 -----296 Light pink
" No. 2 -----592 Deep pink
2 strips 5 x $81\frac{1}{2}$ inches - light pink
2 strips 5 x $72\frac{1}{2}$ " - " "

SUGGESTIONS FOR QUILTING

Quilt along all seams of piecing. Quilt Piece No.1 with leaf motif as indicated on color chart. Use our quilting design No. Q5004 (4-inch border) for plain strip.

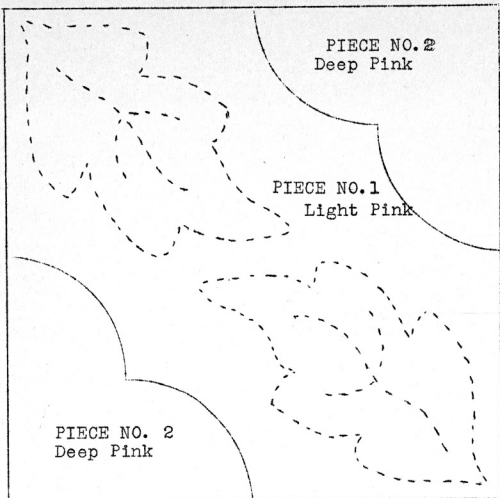
SUGGESTIONS FOR CUTTING.

Trace outline of pieces of the pattern on light cardboard or sandpaper and cut out. Use these cardboard or sandpaper pieces as cutting guides. The most accurate method is to lay cardboard or sandpaper pieces (rough side down) on the material; mark around the pattern with pencil; cut material on pencil lines.

Note; Cut strips first to get full length without piecing.

LADIES ART COMPANY -----ST. LOUIS, MISSOURI.

COLOR CHART



Dotted lines on the above chart indicate a suggestion for quilting.

