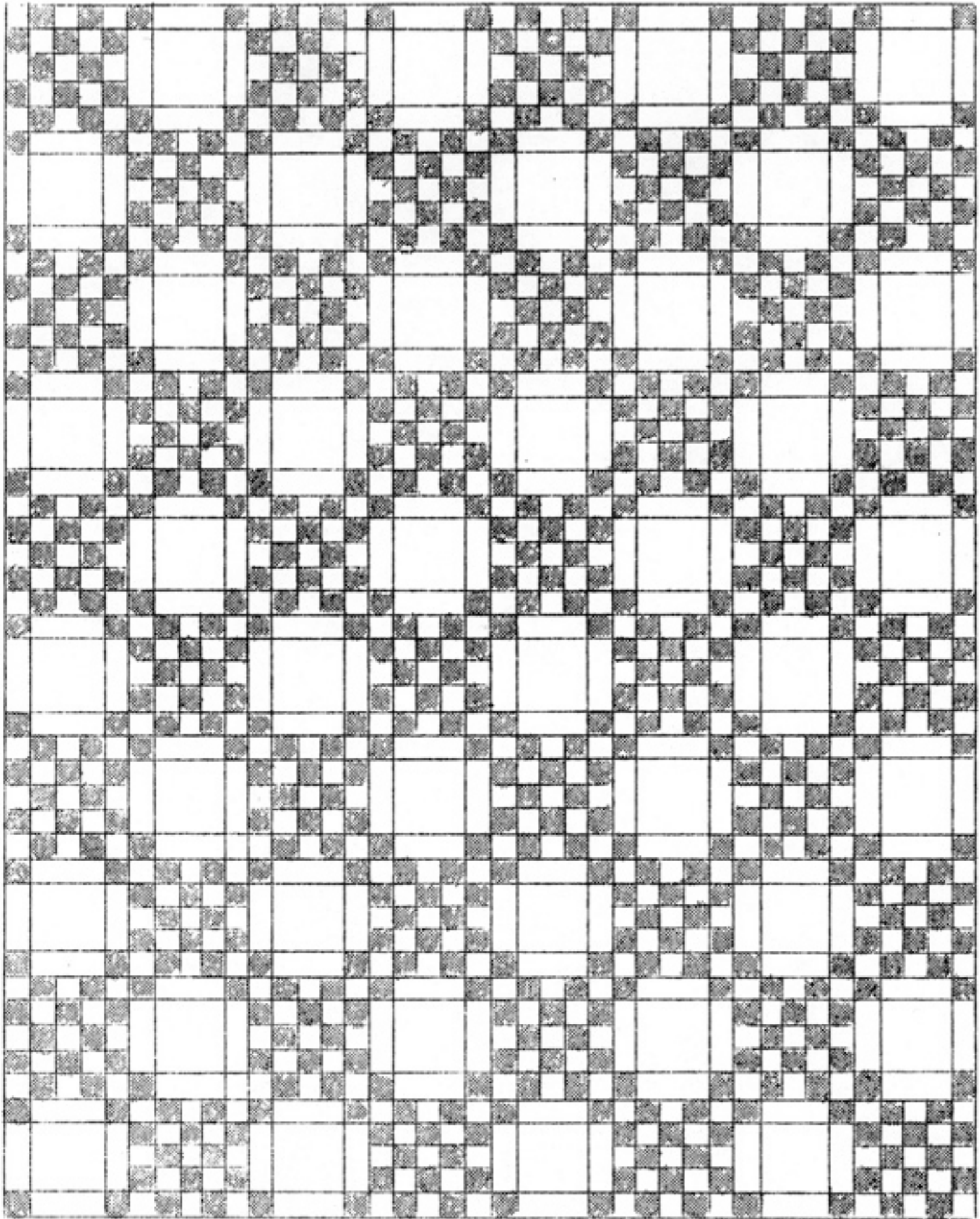


QUILT PATTERN NO. 60-DOUBLE IRISH CHAIN

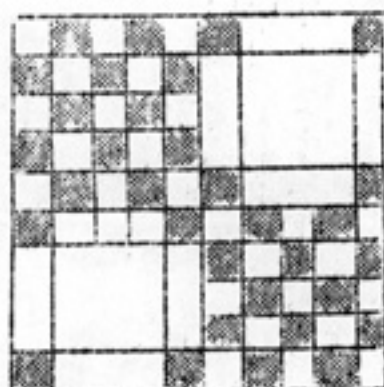


SIZE OF QUILT, 80x100 INCHES

QUILT PATTERN NO. 60-DOUBLE IRISH CHAIN

|                  |                   |                  |                  |                  |                  |                  |                  |                  |
|------------------|-------------------|------------------|------------------|------------------|------------------|------------------|------------------|------------------|
| Piece No.3 White | Piece No.3 Green  | Piece No.3 White | Piece No.3 Green | Piece No.3 White | Piece No.3 Green | Piece No.2 White |                  | Piece No.3 Green |
| Piece No.3 Green | Piece No.3 White  | Piece No.3 Green | Piece No.3 White | Piece No.3 Green | Piece No.2 White | Piece No.1 White |                  | Piece No.2 White |
| Piece No.3 White | Piece No.3 Green  | Piece No.3 White | Piece No.3 Green | Piece No.3 White |                  |                  |                  |                  |
| Piece No.3 Green | Piece No.3 White  | Piece No.3 Green | Piece No.3 White | Piece No.3 Green |                  |                  |                  |                  |
| Piece No.3 White | Piece No.3 Green  | Piece No.3 White | Piece No.3 Green | Piece No.3 White | Piece No.3 Green |                  |                  | Piece No.2 White |
| Piece No.3 Green | Piece No.2 White  |                  |                  | Piece No.3 Green | Piece No.3 White | Piece No.3 Green | Piece No.3 White | Piece No.3 White |
| Piece No.2 White | Piece No.1 White  |                  |                  | Piece No.2 White | Piece No.3 Green | Piece No.3 White | Piece No.3 Green | Piece No.3 Green |
|                  |                   |                  |                  | Piece No.3 White | Piece No.3 Green | Piece No.3 White | Piece No.3 Green | Piece No.3 White |
|                  |                   |                  |                  | Piece No.3 Green | Piece No.3 White | Piece No.3 Green | Piece No.3 White | Piece No.3 Green |
| Piece No.3 Green | Piece No. 2 White |                  |                  | Piece No.3 Green | Piece No.3 White | Piece No.3 Green | Piece No.3 White | Piece No.3 White |

COLOR CHART



Arrangement of Color

SIZE OF QUILT, 80x100 inches.  
This quilt is made of twenty 20-inch pieced blocks set four in width and five in length.

COLORS  
We suggest green and white for this quilt. Any other color may be combined with white.

NUMBER OF PIECES TO BE CUT  
 Piece No.1.....40 white  
 Piece No.2.....160 white  
 Piece No.3.....520 white  
 Piece No.3.....640 green

AMOUNT OF MATERIAL

White.....6 yards ) Total material of  
 Green.....3 yards and 18-inches-) 9½ yards

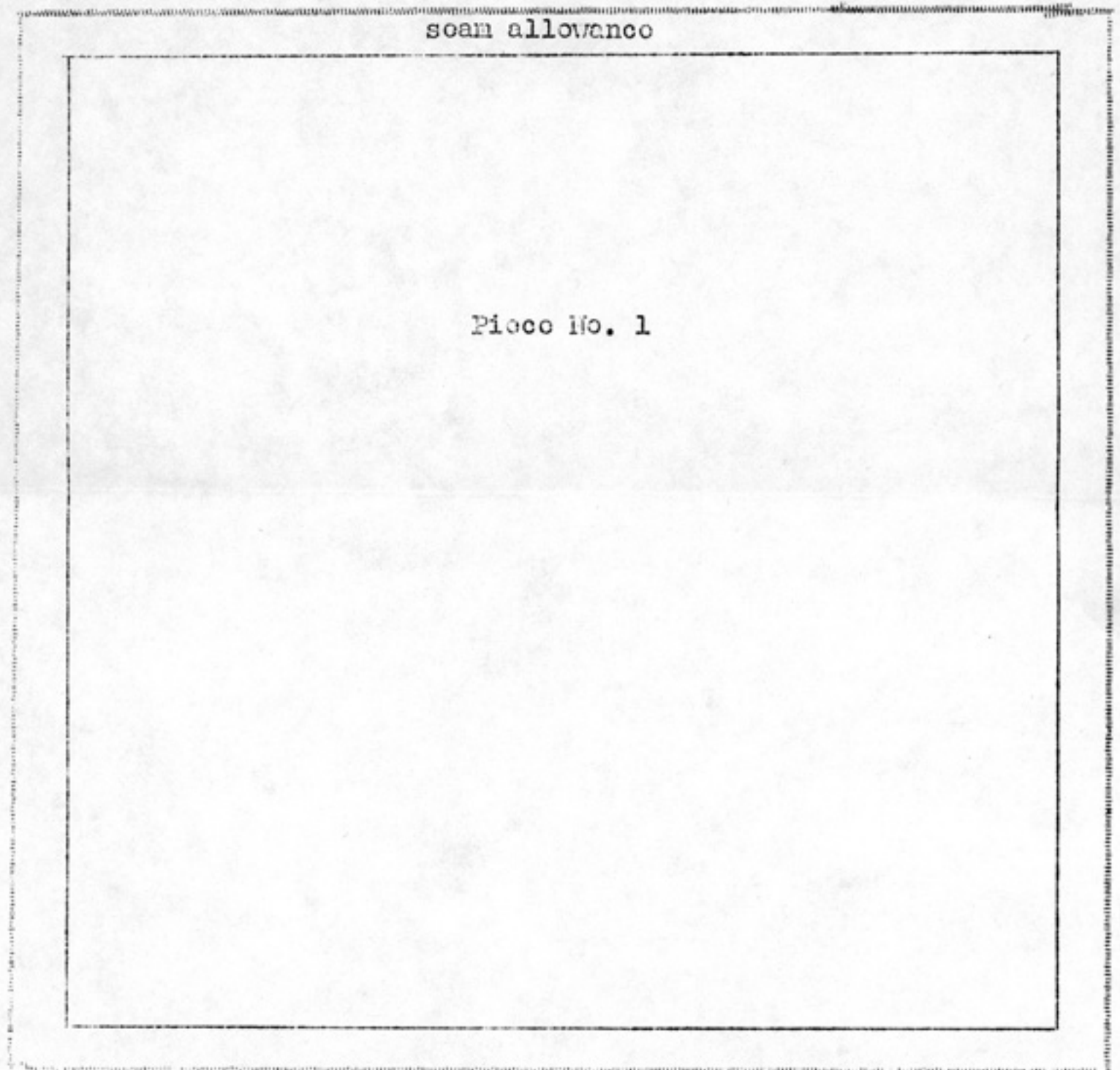
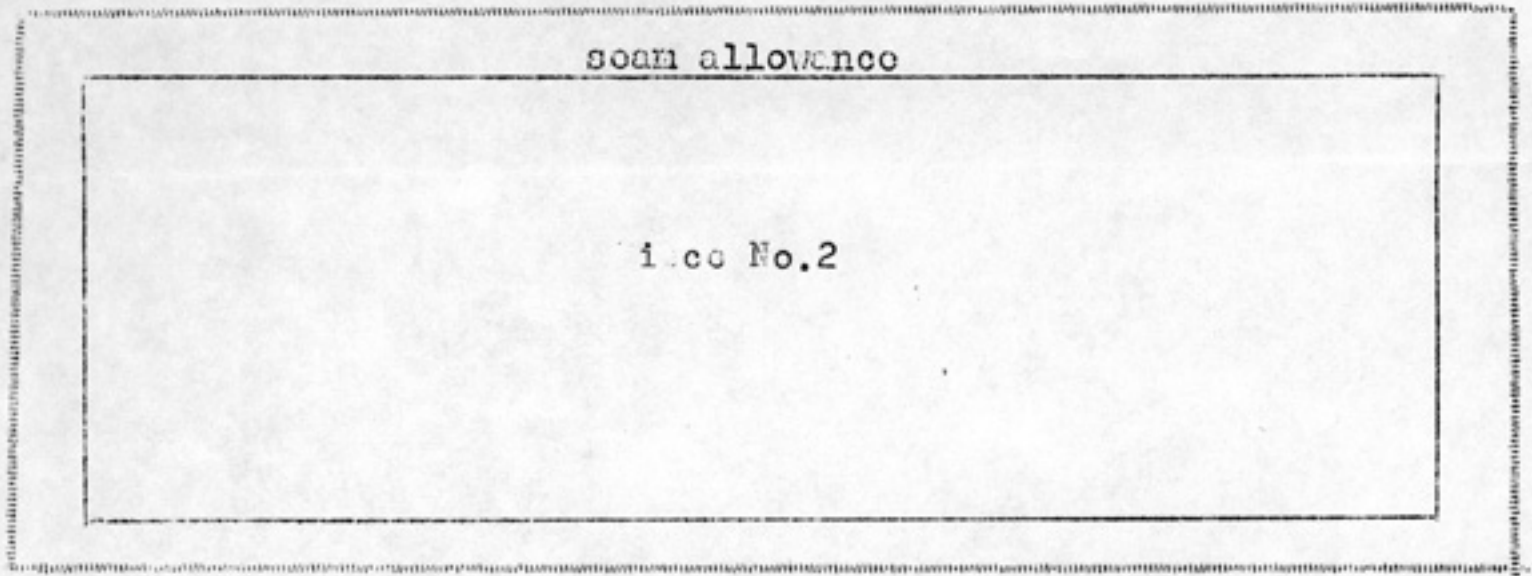
SUGGESTIONS FOR CUTTING

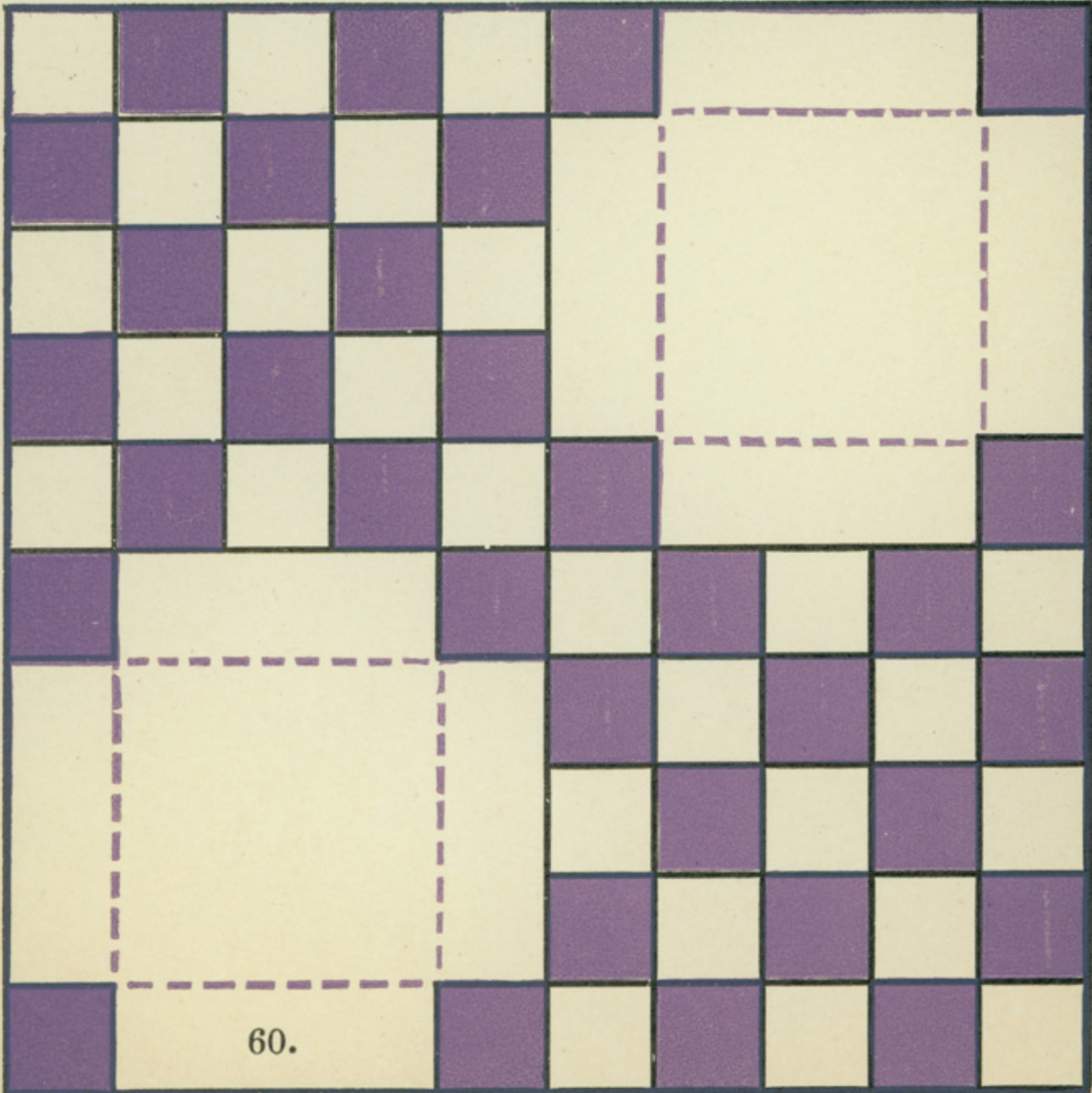
Trace pieces of the pattern on light cardboard or sandpaper and cut out. Use these cardboard or sandpaper pieces as cutting guides. The most accurate method is to lay cardboard or sandpaper pieces (rough side down if sandpaper is used) on the material and mark around with pencil. Cut out on pencil lines. Be sure to lay straight edges of the pattern parallel with the threads of the material.

QUILTING

Quilt along all seams of the piecing. Use our Clover Leaf quilting design No.Q80, size 6-inch, in plain squares.

QUILT PATTERN NO. 60-DOUBLE IRISH CHAIN





60.