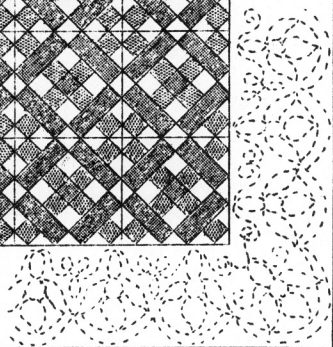
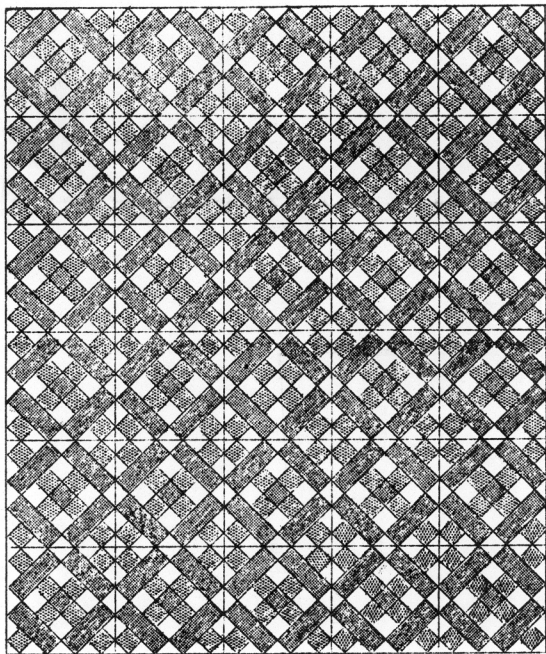


QUILT NO. 175-WASHINGTON SIDEWALK  
85x98-inches



INSTRUCTION SHEET  
QUILT PATTERN NO.175--WASHINGTON SIDEWALK

SIZE OF QUILT, 85x98 inches.

This quilt is made up of thirty 13-inch pieced blocks set five in width and six in length with a 10-inch plain border strip.

COLORS

White and two shades of yellow are suggested for this quilt. Any preferred color may be used. See Color Chart on pattern sheet for arrangement.

AMOUNT OF MATERIAL

White.....2 yards	)	
Light yellow....5 yards	)	Total 10 1/3 yards
Dark yellow.....2 yards and 12-inches)		(Does not include lining)
Lining, white, 90-inch width.....2 yards and 24-inches.		

NUMBER OF PIECES TO BE CUT

Piece No.1.....120	dark yellow
" No.2.....240	light yellow
" No.2.....30	dark yellow
" No.2.....120	white
" No.3.....360	white
" No.3.....120	white
2 strips, 10 $\frac{1}{2}$ x6 $\frac{1}{2}$	inches.....light yellow
2 " , 10 $\frac{1}{2}$ x9 $\frac{1}{2}$	inches.....light yellow

NOTE: Cut strips first to get full length without piecing.

SUGGESTIONS FOR CUTTING

Trace pieces of the pattern on light cardboard or sandpaper and cut out. Use these cardboard or sandpaper pieces as cutting guides. The most accurate method is to lay cardboard or sandpaper pieces (rough side down if sandpaper is used) on the material. Mark around the pattern with pencil. Cut material on pencil lines. When cutting, lay all straight edges of pattern parallel with the threads of the material.

QUILTING

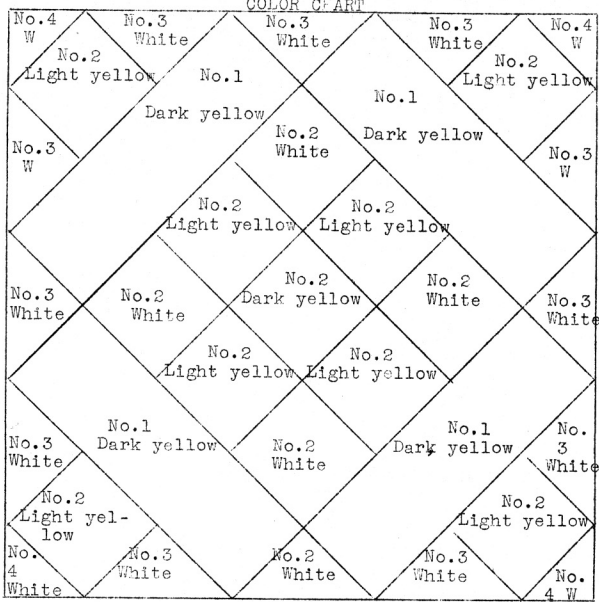
Quilt along all seams of the piecing. Use our quilting design No.Q159(9-inch width) on border.

LADIES ART CO.

Since-1889

ST. LOUIS, MISSOURI

COLOR CHART



Seam allowance

ABBREVIATIONS: W--White

