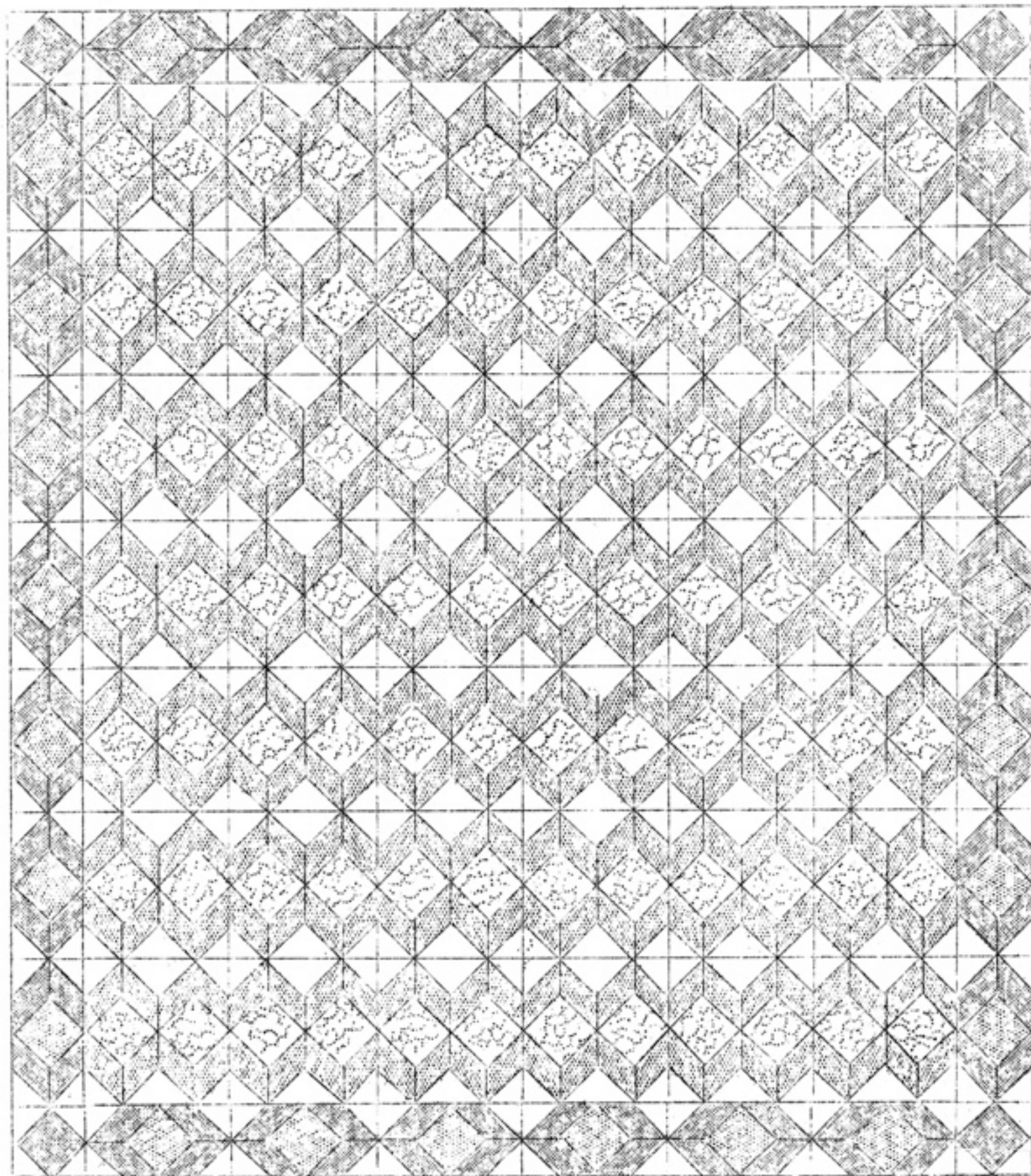


QUILT PATTERN NO. 90 - PATIENCE CORNERS

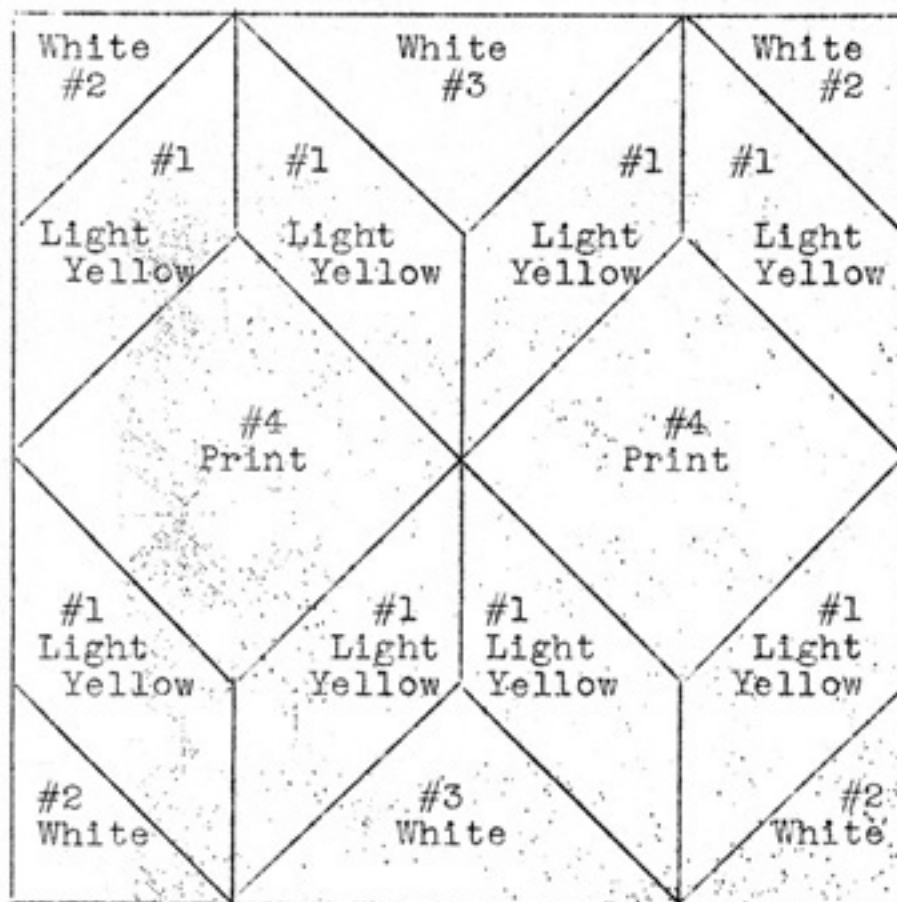


SIZE OF QUILT - 84x96 inches.

LADIES ART COMPANY

ST. LOUIS, MISSOURI.

QUILT PATTERN NO. 90 - PATIENCE CORNERS.
INSTRUCTION SHEET



SIZE OF QUILT, 84x96 inches.

This quilt, as illustrated on the other side of this sheet is made up of forty-two 12-inch pieced blocks and a six-inch pieced border.

COLORS

White, two shades of yellow and a print material are suggested for this design. NOTE. For the border, the light yellow is used for the square center pieces. Deep yellow is used for the diamond shaped pieces and the corner squares are also deep yellow.

COLOR CHART

AMOUNT OF MATERIAL REQUIRED.

White.....	3 yards and 12 inches)	
Print.....	1 " " 24 ")	Total 11 yards and 30 inches
Light yellow.....	5 " " 12 ")	(Does not include lining)
Deep yellow.....	1 " " 18 ")	

LINING, white, 90-inch width... 2 yards and 24 inches.

NUMBER OF PIECES TO BE CUT.

Piece #1.....	336 Light yellow	For Border	Piece #1...104 Deep yellow
Piece #2.....	168 White		Piece #2...120 White
Piece #3.....	84 White		Piece #4... 30 Light yellow
Piece #4.....	84 Print		Piece #4... 4 Deep yellow

SUGGESTIONS FOR CUTTING.

Trace pieces of the pattern on light cardboard and sandpaper and cut out. Use these cardboard or sandpaper patterns as cutting guides. The most accurate method is to lay cardboard or sandpaper pattern (rough side down if sandpaper is used) on the material. Mark around pattern with pencil. Cut out on pencil lines. Whenever possible, lay all straight edges of pattern pieces parallel to the threads of the material.

QUILTING.

Quilt along all seams of the piecing. Make another line of quilting three-fourths of an inch from the seams.

LADIES ART COMPANY

ST. LOUIS, MISSOURI.

QUILT PATTERN NO. 90 - PATIENCE CORNERS

PATTERN SHEET

