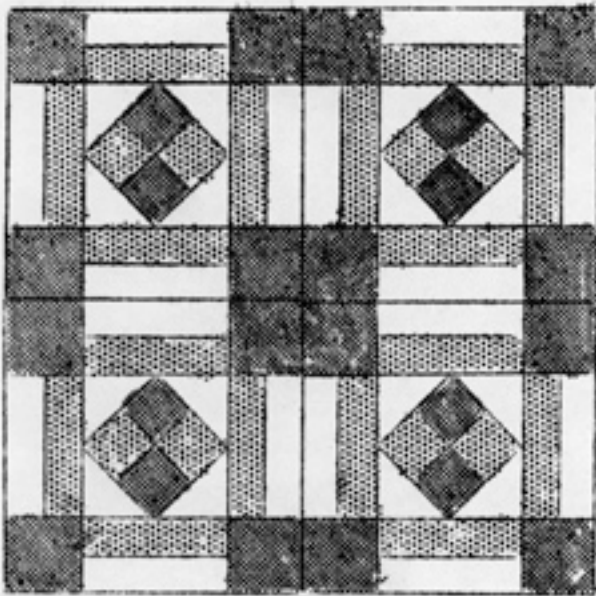


QUILT PATTERN NO.95--COXEY'S CAMP



Four set blocks.

SIZE OF QUILT, 84x96 inches.

This quilt is made up of fifty-six 12-inch pieced blocks set seven in width and eight in length. Use binding for edge of quilt. If desired, a border may be added.

COLORS

White, a dark color and a light color are suggested for this quilt. See Color Chart for arrangement of colors.

AMOUNT OF MATERIAL

White.....5 yards
 Dark color.....5 yards
 Light color....2½ yards.

COLOR CHART

#3 Dark color	#4 White	#3 Dark color
	#4 Light color	
#4 White	White #1 White #2 Dark #2 #1 #1 Light Light color color #1 #1 Dark color #2 #2 White White	#4 L.C. W.
#3 Dark color	#4 White	#3 Dark color
	#4 Light color	

W...White
 L.C.--Light color

NUMBER OF PIECES TO BE CUT.

Piece No.1.....112 dark color
 " No.1.....112 light color
 " No.2.....224 white
 " No.3.....224 dark color
 " No.4.....224 light color
 " No.4.....224 dark color

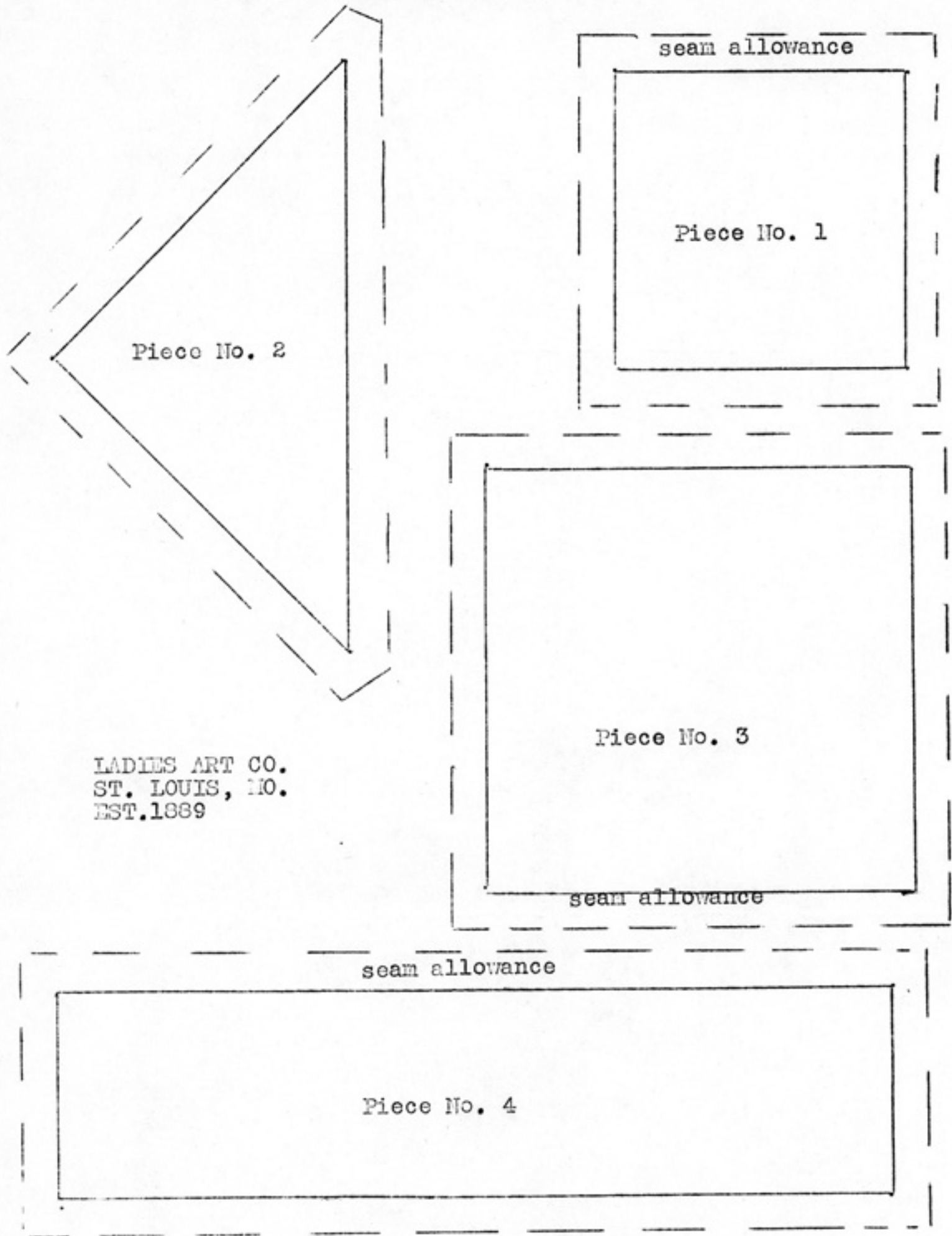
SUGGESTIONS FOR CUTTING

Trace pieces of the pattern on light cardboard or sandpaper and cut out. Use these cardboard or sandpaper patterns as cutting guides. The most accurate method is to lay cardboard or sandpaper patterns on material and mark around with pencil. Cut out on pencil lines. Whenever possible, lay straight edges of the pattern parallel with the threads of the material.

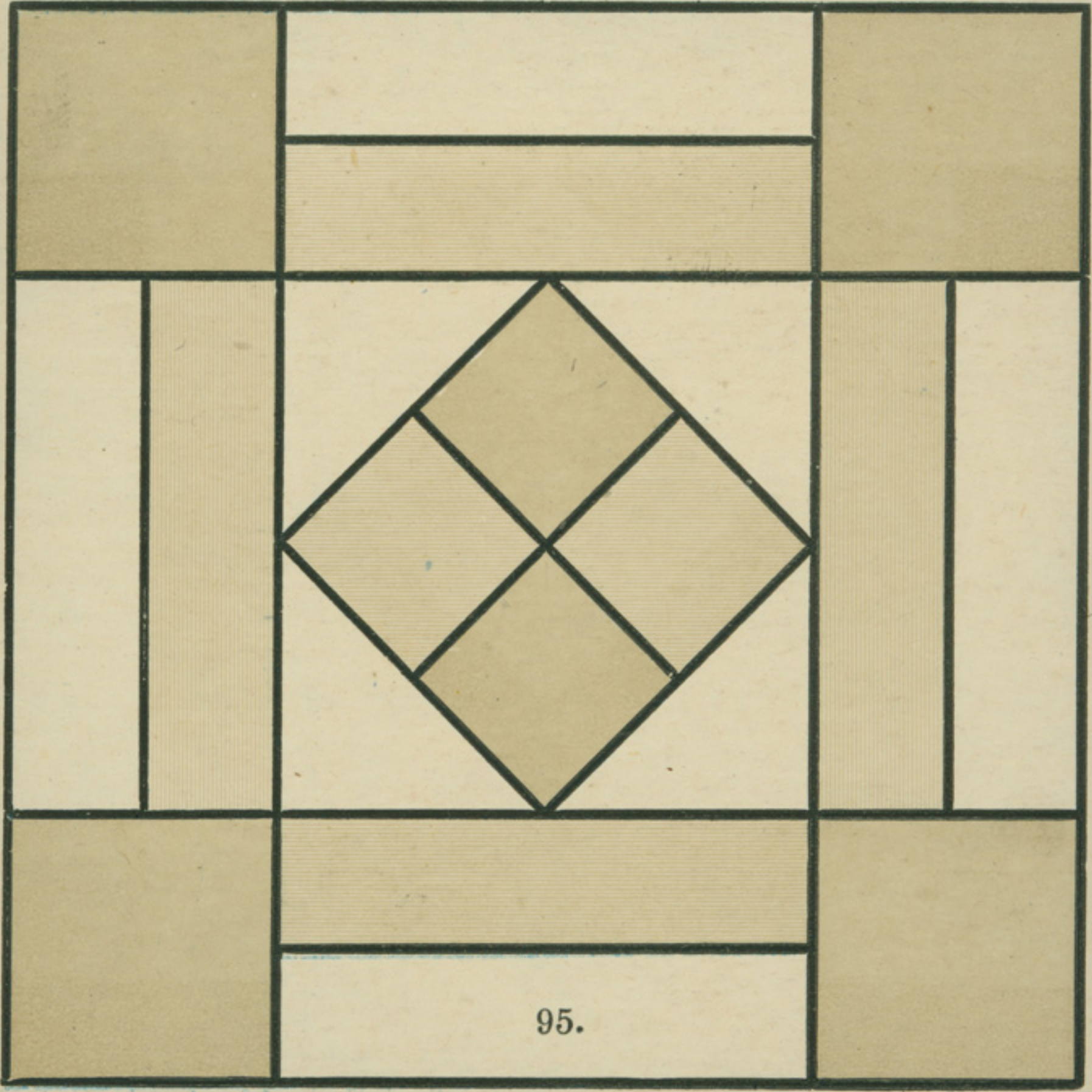
QUILTING

Quilt along all seams of the piecing.

QUILT PATTERN NO. 95--COKEY'S CAMP
PATTERN SHEET



LADIES ART CO.
ST. LOUIS, MO.
EST. 1889



95.