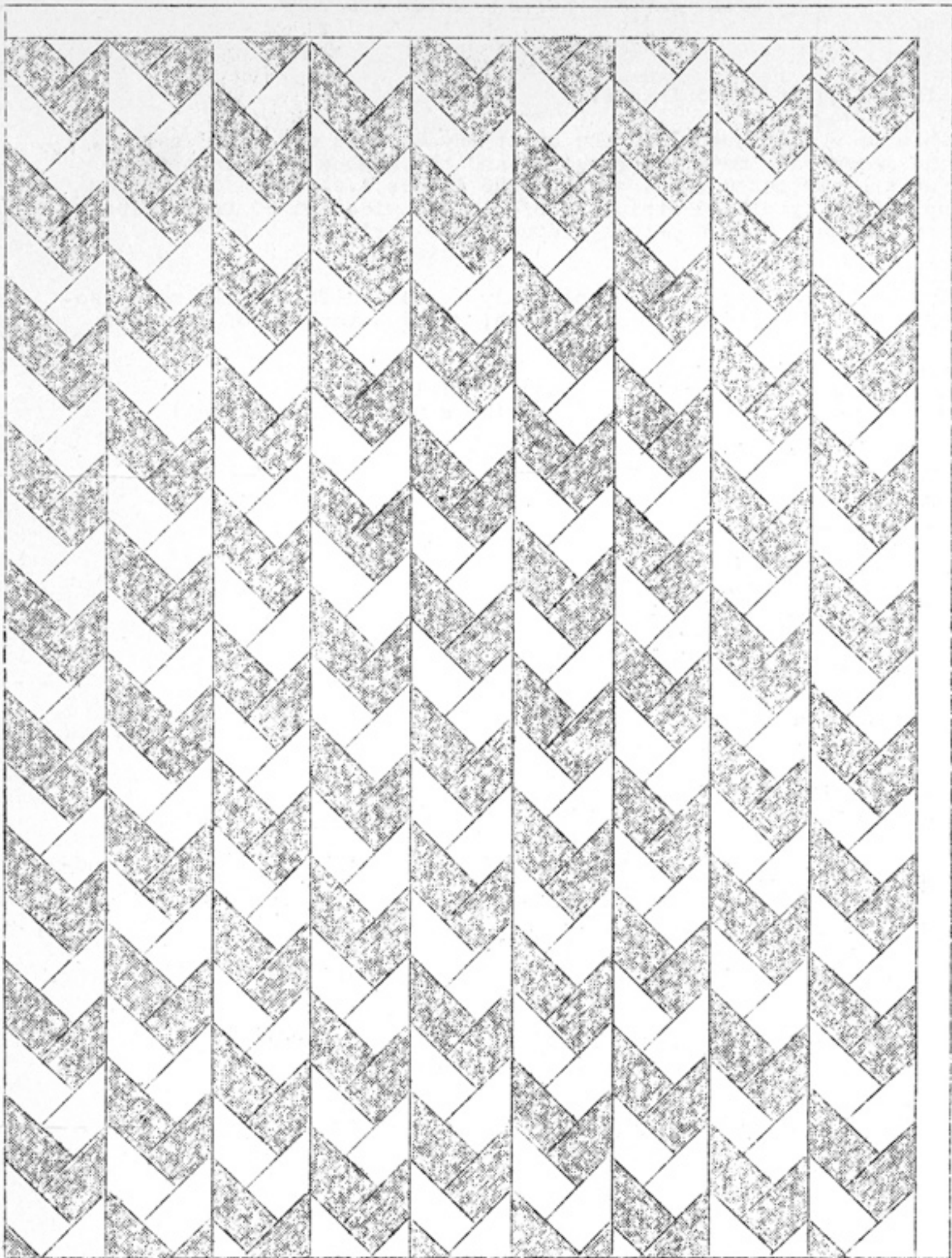


QUILT PATTERN NO. 98 - TWIST AND TURN.



SIZE - 81x96 inches. Only part of quilt (about  $\frac{1}{4}$ ) is shown above.  
LADIES ART COMPANY ST. LOUIS, MISSOURI

QUILT PATTERN NO. 98 - TWIST AND TURN.

INSTRUCTION SHEET.

Size of quilt 81x96 inches.

This is a continuous, so the quilt may be made any size desired. The amount of material required and the number of pieces to be cut are estimated for a quilt 81x96 inches, i.e. for a quilt made up of twenty pieced strips, 3 3/4 inches wide and 90 inches long; and finished with a 3-inch plain border strip.

COLORS

Two shades of any desired color may be used. (This quilt may also be made up in hit and miss fashion, using a variety of colors).

AMOUNT OF MATERIAL REQUIRED

Light.... 5 yards and 18 inches) Total 12 yards.

Dark..... 6 " " 18 " ) (Does not include lining)

LINING, white, 81-inch width...2 yards and 24 inches.

NUMBER OF PIECES TO BE CUT.

Piece #1.....10 light  
" #1.....10 dark  
" #2.....10 light  
" #2.....10 dark  
" #3.....10 light  
" #3.....10 dark  
" #4.....710 light  
" #4.....710 dark

2 strips, 3 3/4 x 96 1/2 dark.  
2 " " , 3 3/4 x 81 1/2 dark.

SUGGESTIONS FOR CUTTING.

Trace pieces of the pattern on light cardboard or sandpaper and cut out. Use these cardboard or sandpaper patterns as cutting guides. The most accurate method is to lay the cardboard or sandpaper patterns (rough side down, if sandpaper is used) on the material. Mark around the pattern with pencil. Cut out on pencil lines. Whenever possible lay straight edges of the patterns parallel with the threads of the material.

NOTE. Cut strips first in order to get full length without piecing.

QUILTING

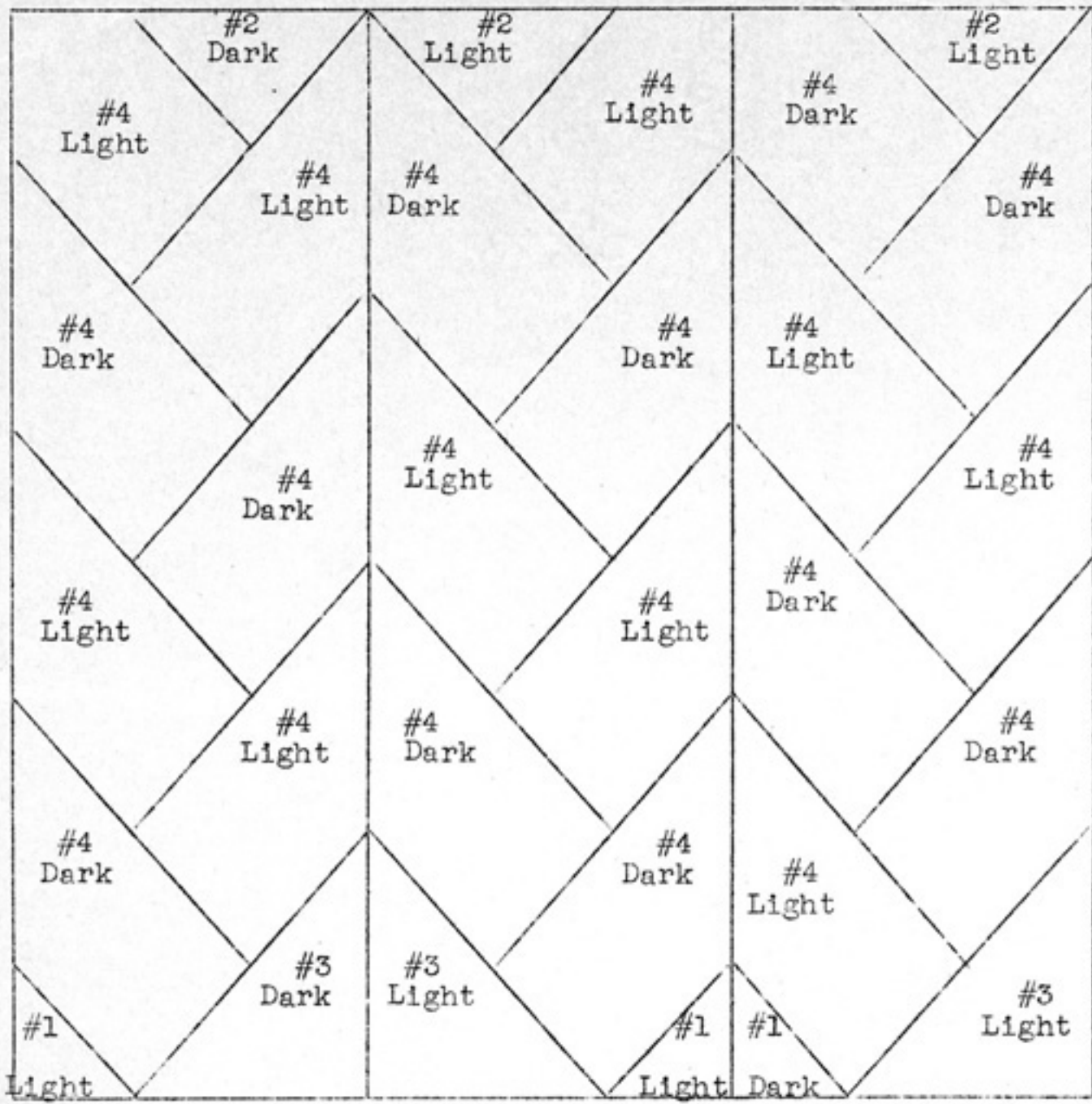
Quilt along all seams of the piecing. Use our quilting design No. Q44 (2-inch width) on plain border strip.

LADIES ART COMPANY

ST. LOUIS, MISSOURI



QUILT PATTERN NO. 98 - TWIST AND TURN.  
PATTERN SHEET.



COLOR CHART

SEAM ALLOWANCE

Piece #1

SEAM ALLOWANCE

Piece #2

NOTE. Cut off corner "A" on 10 light and 10 dark pieces - used across top of quilt.

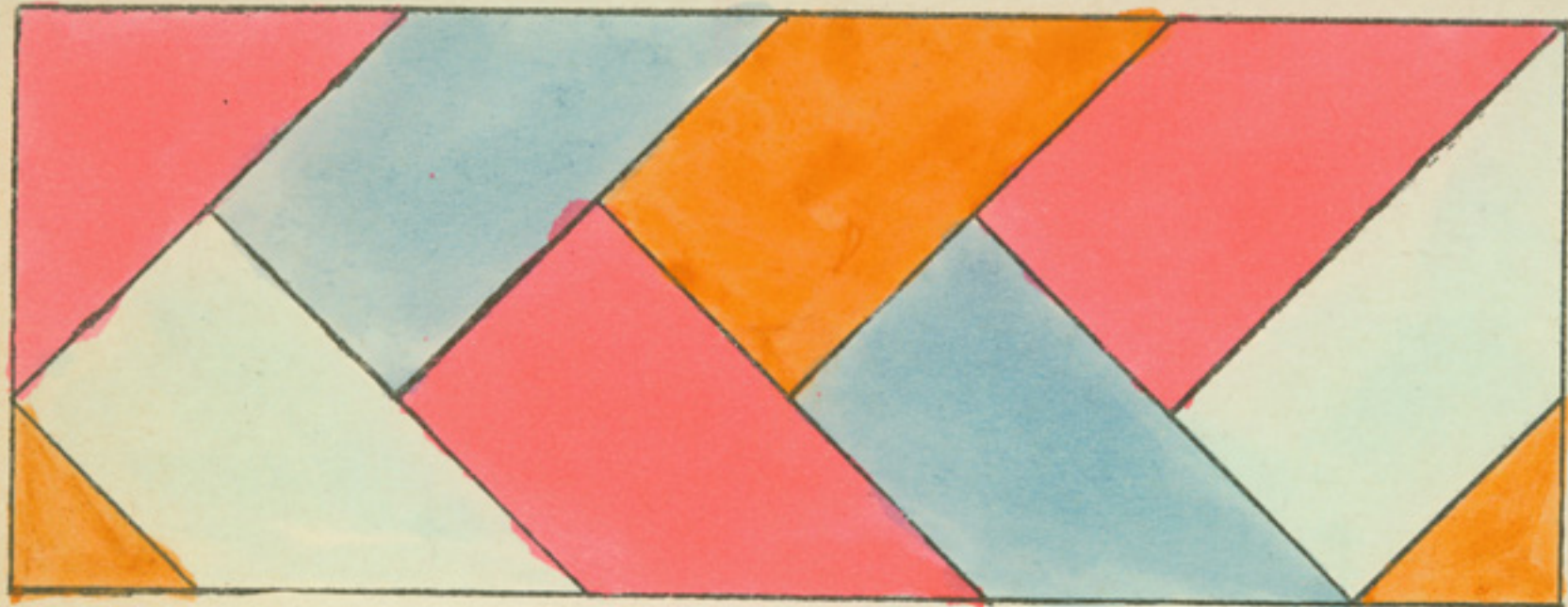
Piece #3

SEAM ALLOWANCE

A

Piece #4

SEAM ALLOWANCE



No. 88.—This Pattern will make a handsome border for a Quilt, and a  
large or small variety of colors can be worked in.

58