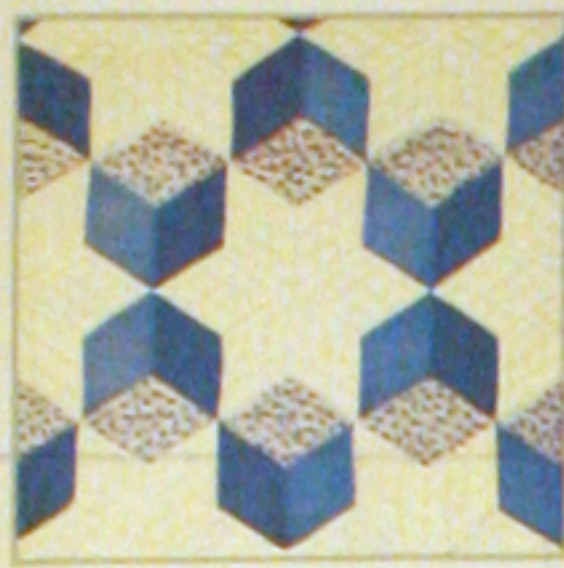




14-FLORAL CIRCLE



15-LUMBAGO BLOCKS



16-DANDELION DAISIES



17-STAR SNOW



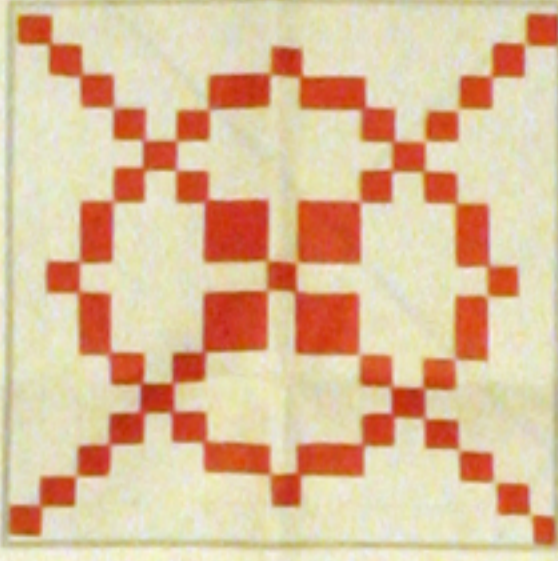
18-POPPY



19-WATER LILIES



20-MARTHA'S VINEYARD



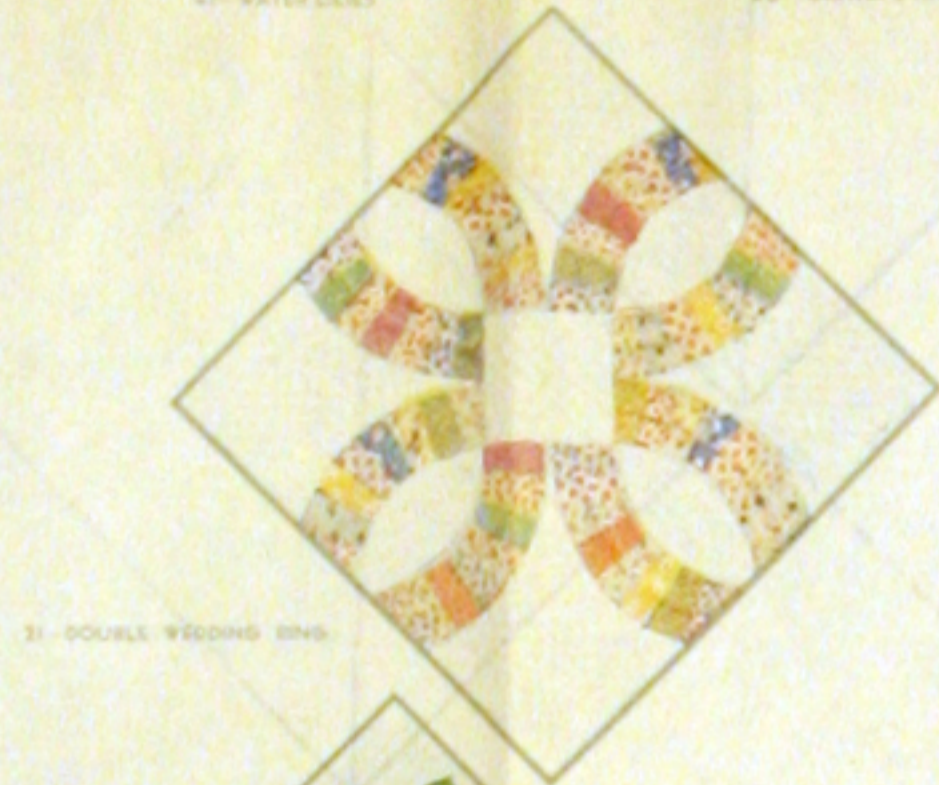
21-HOMESPUN



22-SUNFLOWER



23-IRIS



24-DOUBLE WEDDING RING



25-THE LONE STAR



26-STAR OF BLUEGRASS



27-APPLE BLOSSOMS



28-COUNTRY GARDENS

Save THE QUILT PATTERN which is printed on reverse side of this wrapper. You may obtain the pattern for any quilt design illustrated by using the coupon which is printed in the lower right-hand corner of this wrapper.

1 lb. 3 oz.

ONE SEAMLESS SHEET

FULL QUILT SIZE - 81 BY 96 INCHES

MOUNTAIN MIST

REG. U.S. PAT. OFF. AND IN CANADA

NEEDLE-EASY "GLAZENE" FILLING for QUILTS

Uniform in Thickness • Does Not Stretch Thin • Makes a Quilt That Will Wash Beautifully

THE STEARNS & FOSTER COMPANY
LOCKLAND, CINCINNATI, OHIO

Guaranteed by the Manufacturer
100% NEW S&F MATERIAL
OHIO REGISTRY No. 52



29-TURKEY TRACKS



30-NEW YORK BEAUTY



31-ROWWOOD



32-BOSTON COMMONS



33-COUNTRY LANE



34-SPRING WREATH



35-MY AUNT



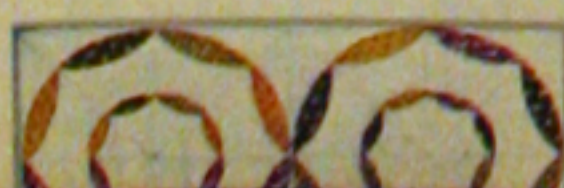
36-DRESDEN PLATE



37-BABY'S CHAIR



38-ROSEBUSH

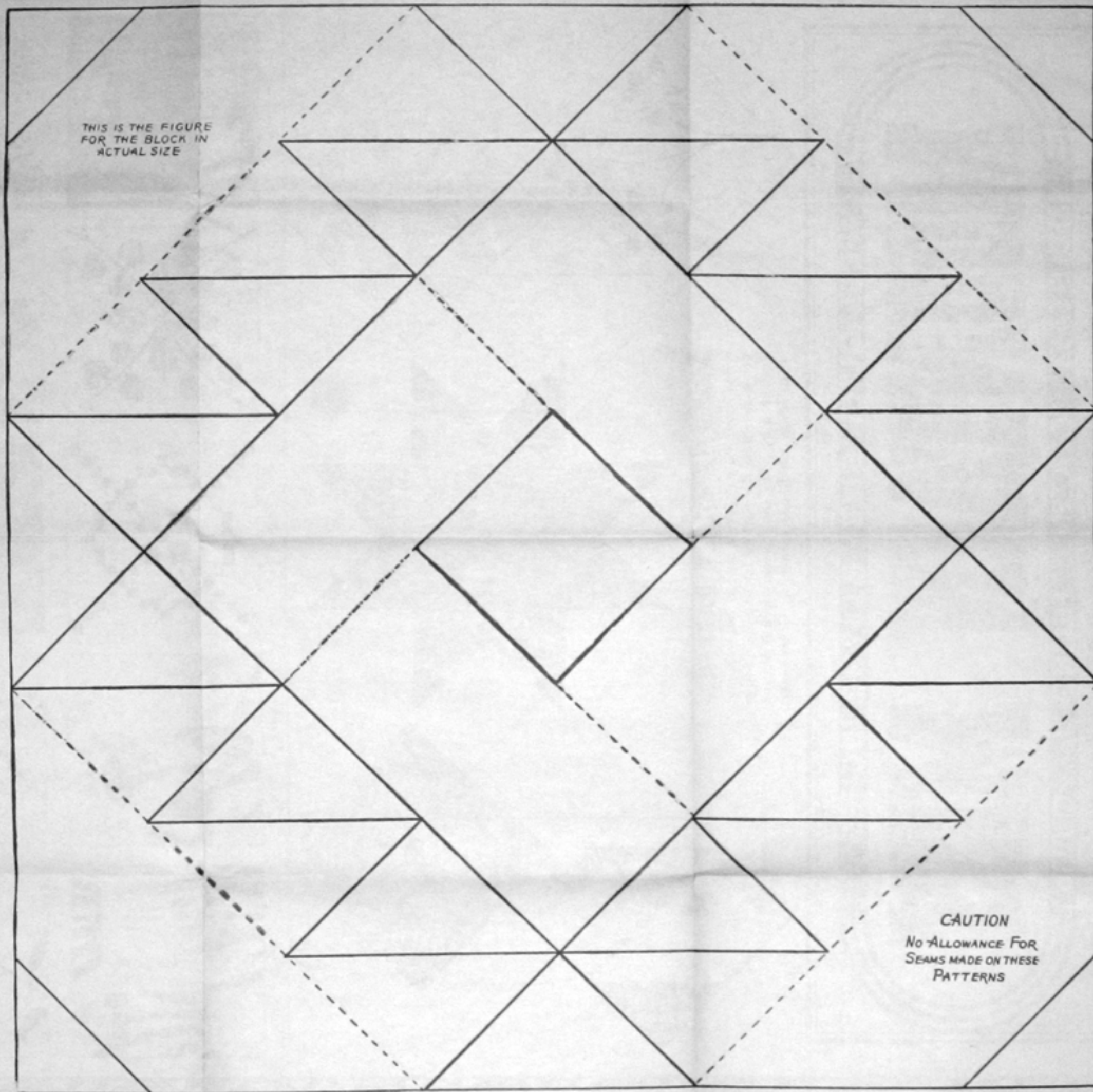


HOW TO ORDER PATTERNS

Printed on the other side of this wrapper you will find the list of our famous quilt patterns. If it does not suit your needs and you will send us this coupon and tell us what you want to order of any of the patterns illustrated in one of this wrapper or illustrated in our pattern catalog for 25¢ each. The regular price is 50¢.

COUPON

LITHO



QUILTING SUGGESTION
Design "D"

Plain quilting is much better than fancy quilting for the Zig Zag. Quilt closely, with fine, even stitches, following the plan sketched in the lower left-hand corner of the quilt diagram; the dotted lines on the diagram indicate the quilting stitches.

Note that each piece is outlined on either side of the hem. When quilting on the blue material, use blue thread; many quilters are now using colored thread on the colored material, and the effect is very good.

Quilt the white center part of each block with parallel lines of stitching, close together, the lines going up and down, or from side to side, on alternate blocks as shown in the diagram. The remainder of the white space is filled in with checks, made from intersecting diagonal lines. These lines are easily marked with pencil and ruler. A continuation of the checks is suggested for the narrow border.

By signing your name, and the date of making, to the quilt, you will add to its interest in times to come. Stitch this record into one corner.

If pencil marks are made lightly, they can be removed with an "Art Gum" eraser when the quilting is finished.

FOR A LARGER QUILT, measuring 78 x 99 1/4", attach two more borders, in addition to the white border shown on the diagram of the small quilt. These are, first, middle border of Harding Blue 1" wide, and next, Tide Blue outer border 2" wide. These are the finished, not the cutting widths. *Yardage Required:* Same as for small quilt, except provide 2 1/4 yds. Harding, and 1 1/2 yds. Tide, instead of yardage shown on chart. Provide additional material for back and binding.

NOTE: This quilt can be enlarged to the above size, or to almost any exact size required, by making adjustments in blocks or borders. First measure the bed to determine the size needed.

CAUTION
No Allowance For
Seams Made On These
Patterns

THE ZIG ZAG
DESIGN "D" OF THE MOUNTAIN MIST SERIES OF QUILT PATTERNS
A PIECED QUILT

This quilt is an example of simple piecing and the maker will be more than pleased with the cheerfulness of the design for unusual attention has been paid to the selection of colors. There are twenty blocks in the quilt, each block being seventeen inches square. The side borders are two inches wide and the end borders two and one-quarter inches—these are the finished and not the cutting widths.

To the left is shown a single block in the actual size as it should appear in the completed quilt. Below is a diagram of the quilt (much reduced in size) showing the chief dimensions when finished. The Color Chart indicates the color arrangement of each block.

YARDAGE REQUIRED. Below is a table showing the yardage required for each of the colors used, the number of pieces to cut, and the colors of cloth corresponding to the letters used in the Color Chart. Our calculations are based on goods a full yard wide.

CUTTING AND MARKING THE GOODS. If there is any doubt about the fastness of the colors or if there is a possibility of shrinkage, it is advised that the goods be washed and ironed before cutting. From the white cloth first cut the four strips for the borders, bearing in mind that the end borders are a trifle wider than the side borders. Be sure to allow 1/4 inch additional for seams.

Except for the four small triangles in the extreme corners of the blocks, all of the other pieces may be made from strips cut to the same width—3 1/4 inches. The smaller triangles in the four corners may be made from strips 2 1/4

inches wide. (These measurements allow for 1/4-inch seams.)

Before cutting out the individual parts, make cardboard patterns in exact size for each part—two triangles, a square, a rectangle, and a trapezoid. Now use these patterns to pencil an outline of the required number of parts on each strip of cloth, being careful to space far enough apart to allow for 1/4-inch seams when parts are cut. (Note: the triangles cannot be cut from 2 1/4-inch squares; cut them from rectangles 3 1/4 x 4") **DO NOT CUT ALONG THESE LINES;** they show where each piece is to be seamed.

Each block is to be pieced together as a unit. After all twenty blocks have been made, they should be pressed with a hot iron and then set together. The borders are next attached, completing the quilt-top. It should be given a final pressing so that all seams will lie as flat as possible.

QUILTING. The last operation is the actual quilting. This process includes the fixing of the quilt-back to the quilting frame; the laying on of the Mountain Mist Quilting Cotton; laying on the quilt-top; the stretching and fastening of the entire quilt to the frame; the marking of the quilting design; the actual stitching of the quilting design and finally the binding and finishing of the edges of the quilt.

MOUNTAIN MIST PATTERNS are obtainable only with the purchase of Mountain Mist Quilting Cotton. One pattern (no choice of design) is printed on the wrapper; also a coupon good for one pattern at a very low price.

YARDAGE AND COLOR CHART

The three shades of blue chosen for this quilt are particularly well suited to the design. These shades of any other color may be used just as well, but use them in the same relation to each other as shown on the color chart below; this brings out the design to the best advantage.

COLORS	PIECES	YARDAGE
L—light blue (Dresden)	40 triangles	1/2 yard
M—medium blue (Harding)	240 triangles	1 1/2 yards
D—dark blue (Tide)	20 squares	1/2 yard
	40 small triangles	1/2 yard
	200 triangles	1 1/2 yards
W—white	80 strips	1 1/2 yards
	80 trapezoids	

Calculated for material one yard wide. Provide additional material for quilt back.

COLOR CHART

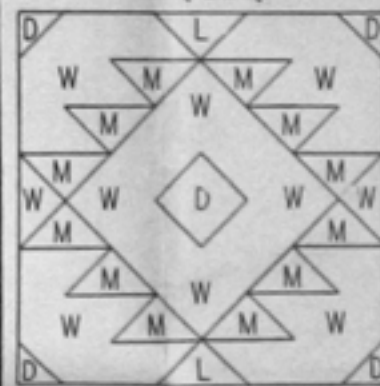
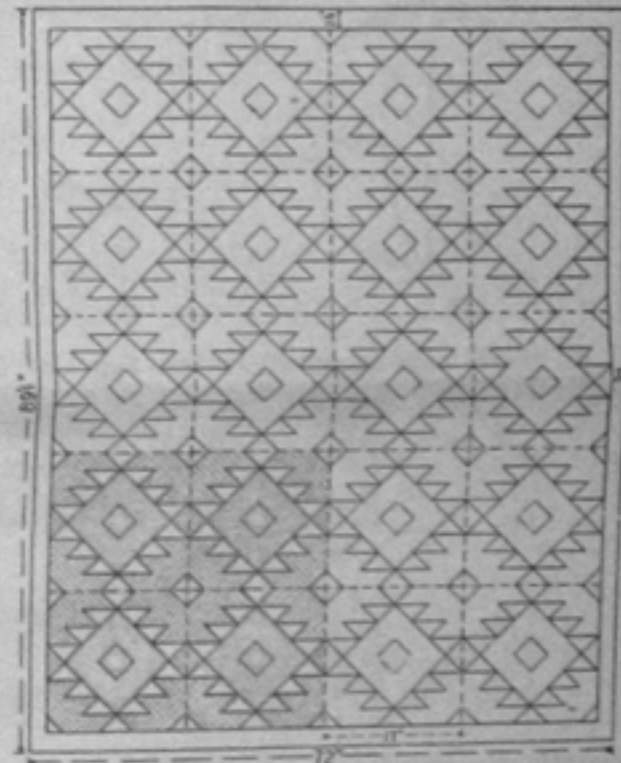


DIAGRAM OF THE QUILT

Directions Given on the Pattern Wrapper



NOTICE
Wrappers for various sewing patterns for quilts printed elsewhere are covered by application for letters patent in the United States Patent Office.
Copyright 1931
THE STEARNS & FOSTER COMPANY
Lackland, Cincinnati, Ohio

