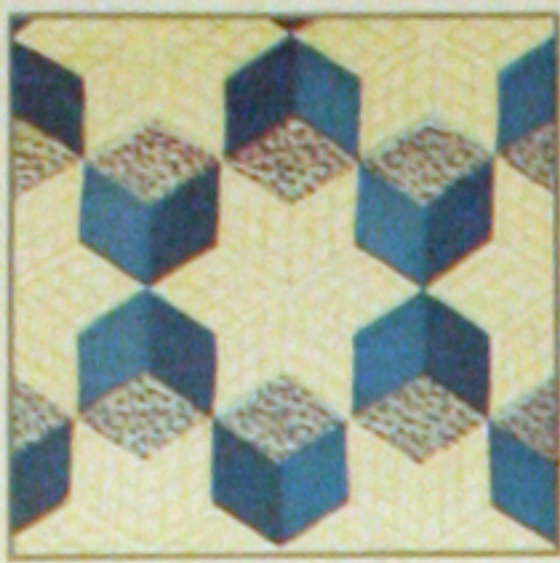




74-FLORAL WREATH



A-TUMBLING BLOCKS



102-KEY DROP



70-STAR BRIGHT



33-GRANDMOTHER'S FLOWER GARDEN



119-DADDY HEX



28-MARTHA'S VINEYARD



34-HOMESPUN



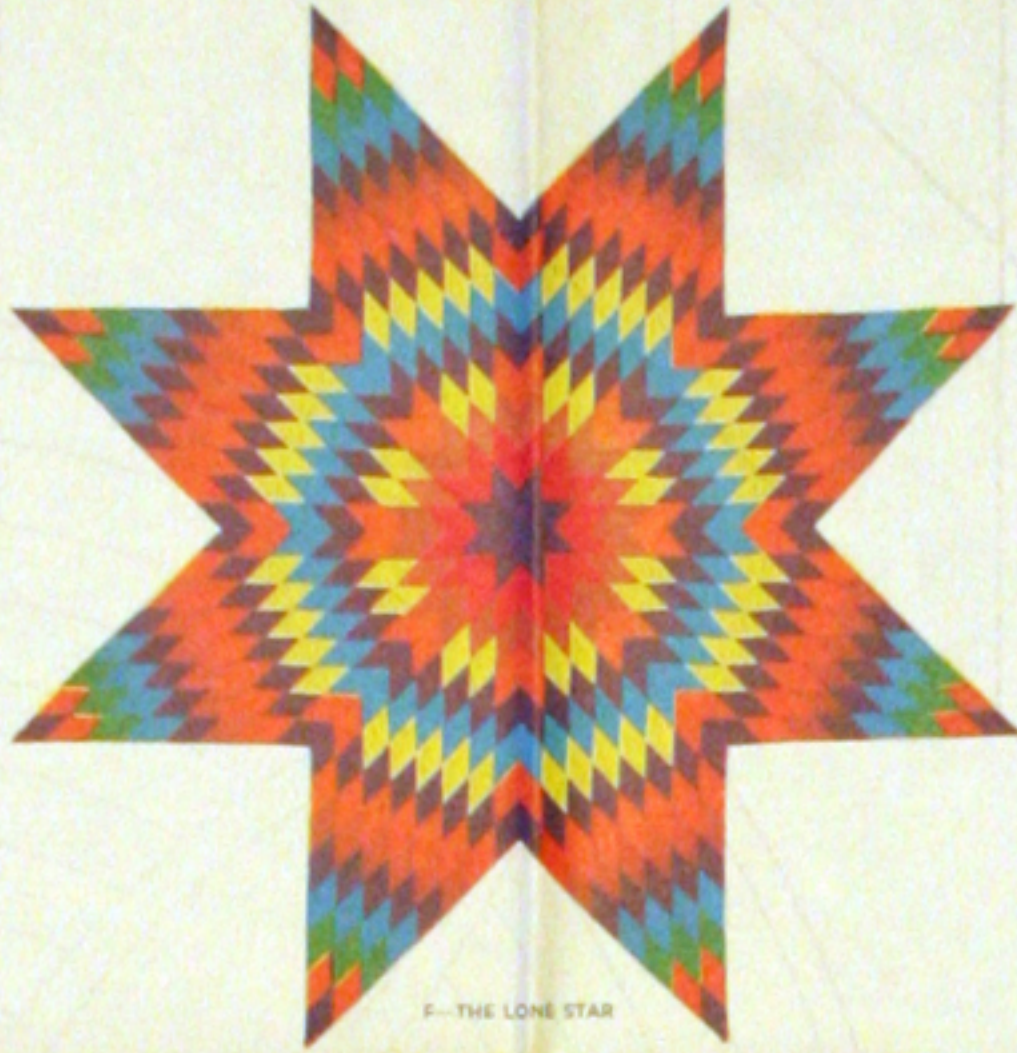
F-SUNFLOWER



8-IRIS



21-DOUBLE WEDDING RING



6-THE LONE STAR



100-STAR OF BLUEGRASS



80-APPLE BLOSSOMS



83-COUNTRY GARDENS

SAVE THIS WRAPPER
THERE IS A VALUABLE QUILT PATTERN
ON THE REVERSE SIDE.
NOTE - Patterns for quilts shown on this
wrapper and in our catalog may be ordered at
a saving with the coupon which is printed below.

1 lb. 3 oz.

ONE SEAMLESS SHEET

FULL QUILT SIZE - 81 BY 96 INCHES

MOUNTAIN MIST

REG. U.S. PAT. OFF. AND IN CANADA

NEEDLE-EASY "GLAZENE"™ ALL COTTON FILLING

Uniform in Thickness • Does Not Stretch Thin • Makes a Quilt That Will Wash Beautifully

THE STEARNS & FOSTER COMPANY CINCINNATI OHIO 45215

ALL COTTON
100% NEW MATERIAL
OHIO REGISTRY No. 52



33-TURKEY TRACKS



X-NEW YORK BEAUTY



39-DOGWOOD



30-BOSTON COMMONS



84-COUNTRY LANES



93-SPRING WEATH



20-OHIO ROSE



75-DRESDEN PLATE



76-Daisy CHAIN



104-COLUMBIE



HOW TO ORDER PATTERNS

Printed on the other side of this wrapper you will find one of our famous quilt patterns. If it does not suit your needs we will be glad to send you your choice of any of the patterns illustrated in our free catalog or on this wrapper at a cost of 20¢ each, with this coupon. The regular price of our patterns is 35¢.

Address: THE STEARNS & FOSTER CO., QUILT DEPARTMENT, Cincinnati Ohio 45215

PATTERN COUPON

QUILT PATTERN

YARDAGE CHART

Calculated for Material 36" Wide

100 diamonds	P.....Helle.....	2½ yds.
16 diamonds	R.....Cherry.....	1 yd.
22 diamonds	S.....Strawberry.....	1½ yds.
7½ diamonds	Y.....Canary.....	4½ yds.
194 diamonds	O.....Burnt Orange.....	1 yd.
80 diamonds	B.....Dresden Blue.....	¼ yd.
24 diamonds	G.....Pacific Green.....	¼ yd.

Provide additional material for quilt back and binding.

COLORS:

Varying shades of one color are often used to good effect, but for our star we have worked out an unusually handsome arrangement of harmonious colors. They include warm Cherry Red, Pacific Green (with a turquoise cast), Strawberry (soft rose), Canary Yellow, Burnt Orange, Helle (medium lavender), and Dresden (light) Blue.

These exact colors should be used if this plan is followed, because substitution of other colors might spoil the effect."

QUILTING PATTERN

for corners and end strips

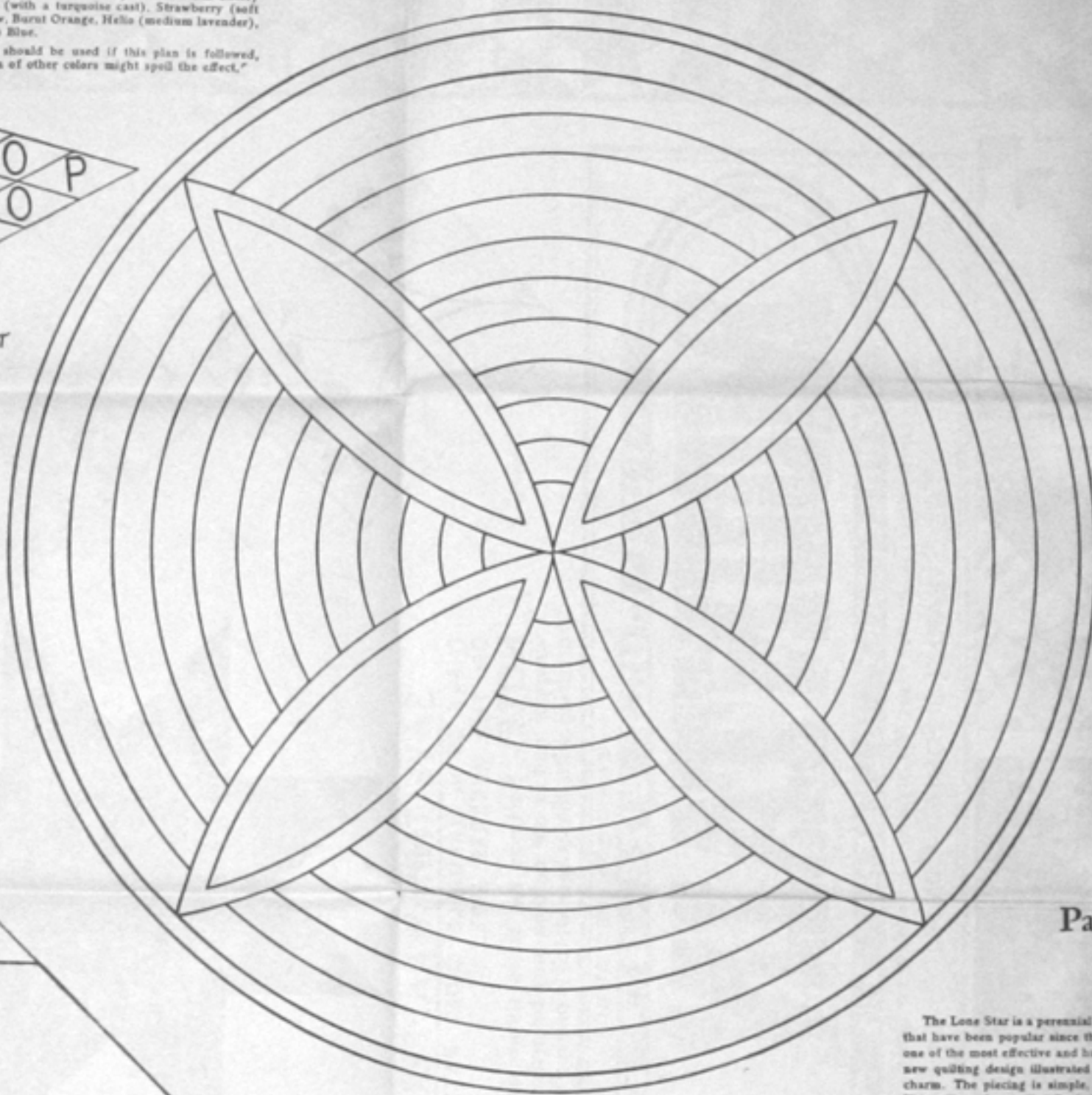
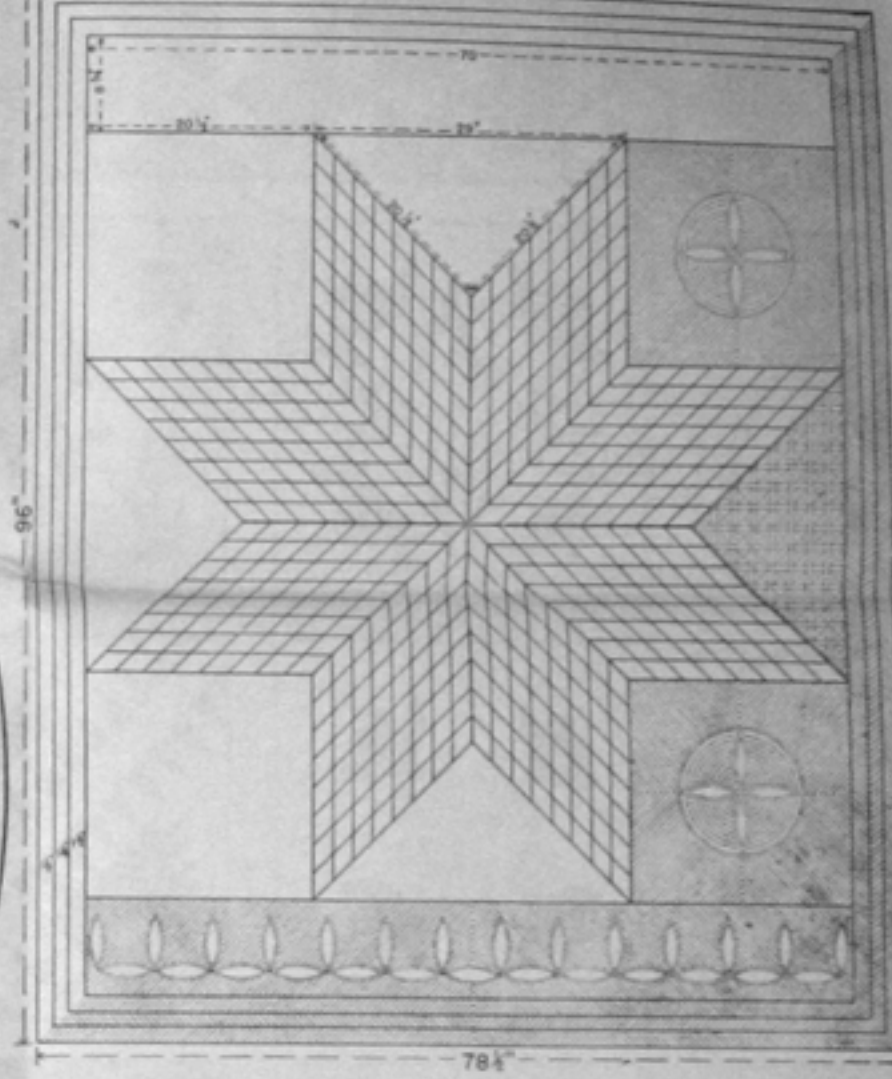


DIAGRAM OF THE QUILT, FINISHED DIMENSIONS



QUILTING SUGGESTION

The following Quilting Suggestion has been found ideal for setting off the plain geometric design of the quilt itself. The smooth quilted curves are interesting without being elaborate, and combined with the diagonal lines they lend just the right touch of formality. A part of the quilting plan here suggested is illustrated by the dotted lines on the quilt diagram; the rest of the quilting is to be done exactly like that illustrated.

Of course, outline the seams on each diamond, running the line fairly close to the seam on each piece. Make a point of using matching thread to quilt each different color. The only other seam outlines quilted are on the three sides of the large yellow triangles. These triangles are then quilted with squares formed by intersecting double lines. As a guide in marking these, note that the double lines, both horizontal and vertical, originate just opposite the diamond seam lines on the star. For close quilting, intersect these quilted squares with crossed diagonals. All these lines, plainly shown on the diagram of the finished quilt, can be marked easily with pencil and ruler.

The circle quilting pattern is used in each of the four yellow squares at the quilt corners. Place the diagram under the cloth in the middle of the square and lightly pencil the lines as they show through. Diagonal lines run towards the center from opposite corners to fill in the background of the yellow squares. As shown on the diagram, they are about 4/10 of an inch apart. Mark lightly with pencil and ruler.

The wide border strips are marked for quilting by using one-half of the four-pointed figure shown in the actual size quilting pattern. Place the diagram under the border strip and mark one vertical loop and a horizontal one, repeating across the strip until fourteen of the vertical figures have been marked. Fourteen will just barely fit in, sided by a little cutting down, towards the quilt edges, to the length of the horizontal figures. After this design is marked on the top and bottom strips, fill in the background with diagonal lines as shown on the quilt diagram; the direction of the lines reverses always at the middle point of each border strip. The narrow border strips are also quilted with these same diagonal lines, the direction being reversed on the middle border, as shown on the quilt diagram. Or, the direction could well be reversed on the first and last narrow border strips, the middle strip being quilted with a continuation of the original lines.

Always mark lightly so that the lines can be removed with an Art Gum eraser when the quilting is completed. Quilt with thread of the same color as the cloth being sewed. For a record in years to come, stitch your name and the date of making into one corner of the quilt.



THE LONE STAR

Pattern "F" of the Mountain Mist Series

A PIECED QUILT

The Lone Star is a perennial favorite among the many star designs that have been popular since the earliest days of quilt making. It is one of the most effective and handsome quilts you can piece, and the new quilting design illustrated on this pattern doubly enhances its charm. The piecing is simple, but it must be done with accuracy. This will not be at all difficult if the instructions below are followed carefully.

At the upper right is shown a diagram of the quilt, giving finished dimensions. The dotted lines illustrate the quilting plan, as explained under "Quilting Suggestion." Above is the actual size pattern needed for marking the quilting. To the left is shown half of a star section. Eight whole sections joined make up the complete star. The star sections are pieced from the small diamonds, the colors being arranged as indicated on the Color Chart.

DIRECTIONS:

1. First make several of the small diamond patterns for marking the cloth. If one pattern begins to wear along the edges in marking, you will then have another immediately at hand. To make these patterns, trace the outlines of the diamond thru this paper, paste onto cardboard, or the smooth side of sandpaper, and cut out exactly on the lines. Or, transfer directly with carbon paper. Patterns made of fine sandpaper, placed on the goods rough side down, will not slip in the marking.
2. If there is any doubt about the color fastness, or if there is a possibility of shrinkage, first wash and iron the cloth. If the top is washed, also shrink the goods for the quilt back before quilting.
3. Now cut the narrow border strips. The first, or inside border, is of Helle, requiring two strips cut to finish 1½x73, and two to finish 1½x90½. The next border is of Strawberry, requiring two strips cut to finish 1½x75½, and two cut to finish 1½x93. The final, or outside border, is of the Cherry colored cloth, and requires two strips cut to finish 1½x78½, and two cut to finish 1½x96. These measurements do not allow for seams; add ¼-inch to widths and ⅜-inch to lengths in cutting, to provide for seams and mitred corners.
4. Also cut the squares and triangles of yellow material that make up the background for the star. Cut four 21-inch squares, to finish 20½ inches square, as shown on the quilt diagram. Next cut four triangles to finish 20½x20½x27, allowing ¼-inch extra on each side for seams. These triangles finish, when seamed in place, one half the size of the squares, but do not attempt to cut them from 21-inch squares, because this does not allow for seams on the long sides of the triangles.
5. To provide for the two wide yellow top and bottom strips, cut two strips 9¼x70½. When joined to the rest of the quilt top, these will finish 8½x70, as required.
6. Now with a soft, sharp pencil outline the required number of diamonds (see Yardage Chart) on each color of cloth, dove-tailing the pieces together to save cloth. Mark on the wrong side of the goods and space the outlines far enough apart to allow for ¼-inch seams, or less if preferred. **DO NOT CUT ALONG THESE LINES;** cut a seam's width outside them. They give you exact lines to follow in piecing the diamonds together and so this accuracy depends the beauty of the finished quilt. Cut out each diamond beyond the pencil lines, allowing for seams by eye.
7. The next step is the piecing of the star. Make each of the eight star points, or sections (the Color Chart is a section), separately, each following the color arrangement shown on the Color Chart. Since there are eight diamonds in each of the eight diagonal rows making up each star section, this simplifies the piecing because the colored diamonds may be sewed together by eights. As each separate star section is finished, measure it by the actual size diagram to make sure that it is the right size. Lay each section over the diagram. The lengths from the star point to the two "X" points (point of greatest width) should exactly tally, and the width of the star section must

8. Now set the eight star sections together to form the complete star. The center will be formed of eight Helle diamonds, and the colors throughout will work up into a beautiful stained-glass window effect. The sections will fit together smoothly and there will be no fullness or bumpiness in the star center if the work has been done with care, as cautioned above.
9. Next join the yellow background squares and triangles to the star, as shown on the quilt diagram. This results in a large square, to which the wide end strips are added for length and proportion; incidentally, they also provide an excellent space for quilting.
10. To complete the quilt top, piece onto it the three narrow border strips, first Helle, then Strawberry, and last Cherry. Each of the latter two border strips are pieced in the center for the sake of economy of cloth; the piecing will not be noticed after the quilting is done.
11. After a careful pressing, the quilt top should measure about 78½x96. This size can, of course, be changed or adjusted in the beginning, to suit the individual taste or requirements. The simplest way is to make changes in the border measurements.
12. The final step is the quilting. This includes fixing the quilt back to the quilting frame, laying on the Mountain Mist Quilting Cotton and the quilt top, stretching and fastening the entire quilt, marking and stitching the quilting design (see Quilting Suggestion) and binding the edges of the quilt. A Cherry colored binding would be an appropriate choice.

Good quilting can be done only with a regular quilting frame or with a strong, steady quilting hoop. If you have no quilting frame, use a strong, steady hoop, about twenty inches in diameter. Hoops are convenient to use and are easily stored out of the way.

Actual Size
Pattern Marker -
no allowance
made for seams