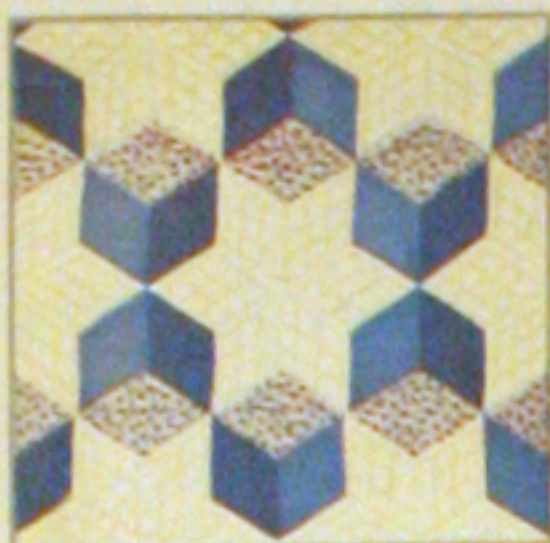




74 - FLORAL WREATH



75 - TUMBLING BLOCKS



76 - DAFFODIL SAFEGUARDS



79 - STAR BRIGHT



80 - POINSETTIA



81 - WATER LILIES



82 - MARTHA'S VINEYARD



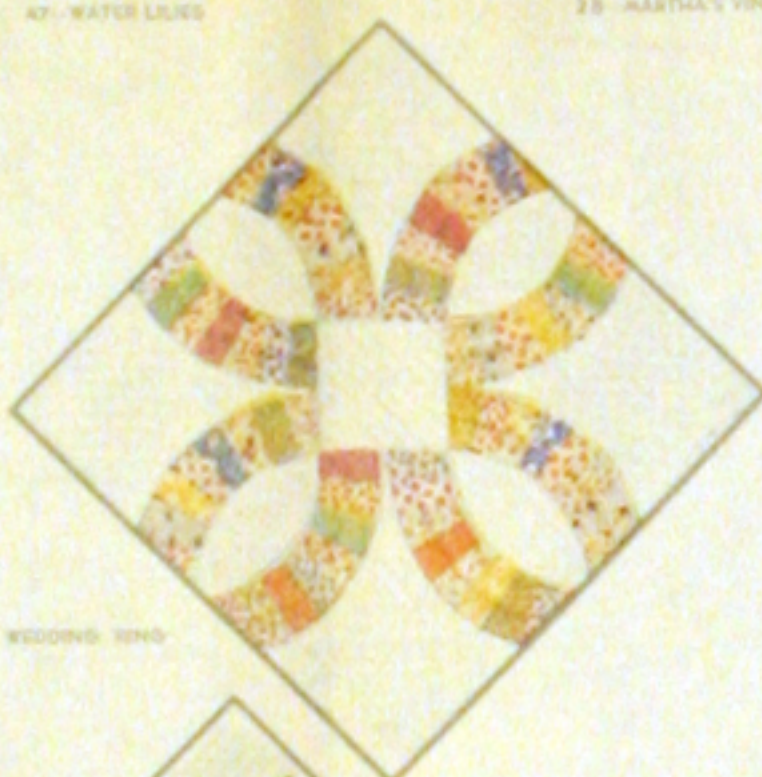
84 - MOORS RUN



85 - SUNFLOWER



86 - IRIS



87 - DOUBLE WEDDING RING



88 - THE LONE STAR



89 - STAR OF BLUEGRASS



90 - APPLE BLOSSOMS



91 - COUNTRY GARDENS

Save THE QUILT PATTERN which is printed on reverse side of this wrapper. You may obtain the pattern for any quilt design illustrated by using the coupon which is printed in the lower right-hand corner of this wrapper.

1 lb. 3 oz.

ONE SEAMLESS SHEET

FULL QUILT SIZE - 81 BY 96 INCHES

MOUNTAIN MIST

REG. U.S. PAT. OFF AND IN CANADA

NEEDLE-EASY "GLAZENE" FILLING for QUILTS

Uniform in Thickness • Does Not Stretch Thin • Makes a Quilt That Will Wash Beautifully

THE STEARNS & FOSTER COMPANY
LOCKLAND, CINCINNATI, OHIO

Form 100
© 1949 S&F CO.
LITHO IN U.S.A.

Guaranteed by the Manufacturer
100% NEW **S&F** MATERIAL
OHIO REGISTRY No. 92



92 - TURKEY TRACKS



93 - NEW YEAR READY



94 - DOGWOOD



95 - BOSTON COMMON



96 - COUNTRY LANES



97 - SPRING WREATH



98 - OHIO ROSE



99 - GREEN PLATE



100 - EASY CHARM

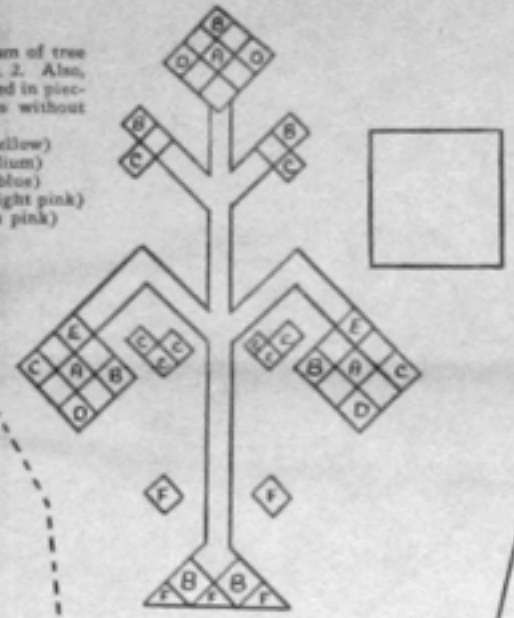


101 - ROSEMANATE

8 J. C. Chastain @ 1950



RIGHT—
 Much reduced diagram of tree for Quilt Design No. 2. Also, actual size square used in piecing the tree. Spaces without letters are white.
 A.—Oak (medium yellow)
 B.—Pine Blue (medium)
 C.—Dresden (light blue)
 D.—Cherry (very bright pink)
 E.—Cameo (medium pink)
 F.—Tangerine



THE CHANTICLEER

Design "G" of the "Mountain Mist Series" of Quilt Patterns A Child's Quilt

Ten bright red chanticleers march proudly across the counterpane, "little red hens" inhabit every other block, and round yellow chicks are just out of their shells on the border. Altogether this makes a most entertaining new quilt for a child.

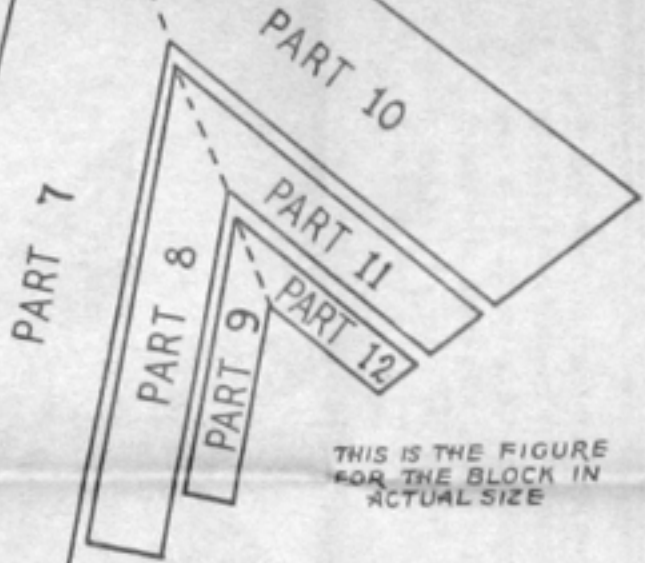
Or if a less realistic quilt is preferred, try Design No. 2, shown lower right. Each corner is applied with two birds and a formal tree. These are applied on a light tan colored background.

QUILT DESIGN No. 1

This quilt is made up of twenty 15" white blocks; ten of these are applied with the chanticleer, and the other ten are marked with the outline of the hen and embroidered (simple outline stitch) with boil-fast red floss. The blocks are set together as shown by the dotted lines in the diagram; around and between them runs a 2" red inter-block border. The wide border with chicks and shells is white; next is a 1/2" bright rose border with wide corners, and last, a 1" red border. The feet, legs and bills of the chicks are stitched in with orange floss, and the eyes with black, leaving white cloth centers. The eyes of the chanticleers are of red floss, also leaving small white cloth centers.

INSTRUCTIONS

1. First make cardboard patterns for all the parts that are numbered. (See actual size figures, left.) Trace these outlines thru thin paper, paste onto cardboard and cut out along the penciled lines.
2. Before marking off the cloth parts, first cut the required material for the red inter-block borders and the outside border, the white border, and the wild rose border. See the quilt diagram for these measurements. Also cut the twenty white background blocks. In each instance allow 1/4-inch extra for seams.
3. Now outline the required number (see yardage chart) of cardboard patterns on each color of cloth, being careful to allow 1/4-inch extra on all sides for seams. Cut out the parts, making the seam allowance. The penciled lines thus show where to seam.
4. Next baste the figures on the ten chanticleer blocks. To locate the positions of the parts, place the actual size patterns over each block and mark through the paper so as to show the exact position of each piece. After basting, applique with thread of the same color as the cloth being sewed.
5. In marking the blocks for the hen figures (which is to be done in simple outline stitch in red), it is a good idea to make a perforated pattern for stamping. To do this, trace the hen onto a thin, but strong bond paper, and perforate your pattern by stitching all the lines on a sewing machine. The hen is then ready to be transferred to the blocks by rubbing lightly over the perforations with a small wad of cloth dipped into a little stamping powder (which can be obtained at any fancy-work counter). If no such powder is available, make a perforated pattern as was made for the hen in Step 5. Stamp the eggshells onto the border and work them in outline stitch (black boil-fast floss is suggested). Set these border strips onto the quilt. Next sew on the narrow 1/2" wild rose border with its triangular corner (angle is 4" deep). Last comes the 1" red outer border, which also has deep corners.
6. Set on and applique the five lengthwise and six crosswise 2" red strips. (If you prefer to piece these strips in, make the blocks to finish 15" instead of 15", and set together by piecing them right onto the red inter-block border.)
7. Now applique the yellow chicks on the four white border strips; stitch in the legs, feet and bills. For the eggshell, make a perforated pattern as was made for the hen in Step 5. Stamp the eggshells onto the border and work them in outline stitch (black boil-fast floss is suggested). Set these border strips onto the quilt. Next sew on the narrow 1/2" wild rose border with its triangular corner (angle is 4" deep). Last comes the 1" red outer border, which also has deep corners.
8. The final step is the actual quilting, which includes fixing the quilt back to the quilting frame, spreading on the Mountain Mist Quilting Cotton, laying on the quilt top, stretching and fastening the entire quilt, marking and stitching the quilting design (see Suggestion for Quilting), and finally, binding the edges of the quilt.



CAUTION
 No ALLOWANCE FOR SEAMS MADE ON THESE PATTERNS

QUILT DESIGN No. 2

The diagram to the right shows the second version of the Chanticleer quilt. The background (measuring 60"x72") is a light brown. In each corner is applied a tree (see small diagram above, left). These trees are first pieced together from the small one-inch squares also shown above, left. To make the trees, first make a cardboard pattern for the square and mark off the required number of squares on each color of cloth, being sure to allow 1/4-inch extra on all sides for seams; in piecing, use the diagram of the tree as a guide. The finished tree should be 20" high.

The eight chanticleers, two to each corner, are marked off, cut out, basted, and applied as in instructions for Quilt Design No. 1. Before marking off the parts, however, first cut the required yardage for the 5" white border and the 1" tangerine border. (Piece each of these border strips in the center.)

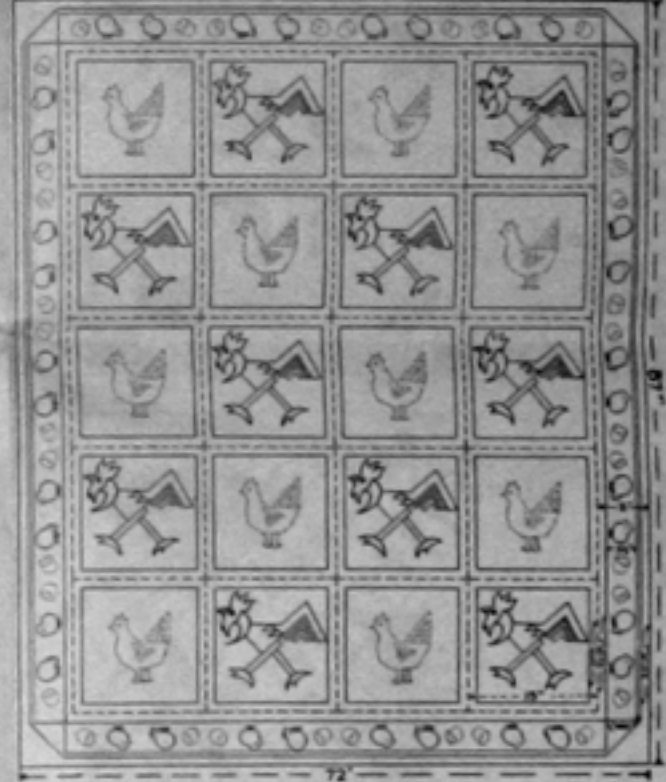
In this instance, the colors for the fowl are as follows: All parts white, except the feet, legs, and head (Parts 15, 16, 17, 1, and 2), which are Tangerine, and the bill (Parts 3 and 4), which is Oak (medium yellow). The eyes are of yellow and white thread.

The colors used in the tree are given above with the diagram.

YARDAGE

Oak, 1"; Pine Blue, 3"; Dresden, 3"; Cherry, 2"; Cameo, 2"; Tangerine, 1 1/4 yds. White, 1 1/2 yds.; Light Brown, 2 1/4 yds. Provide enough additional material for the quilt back.

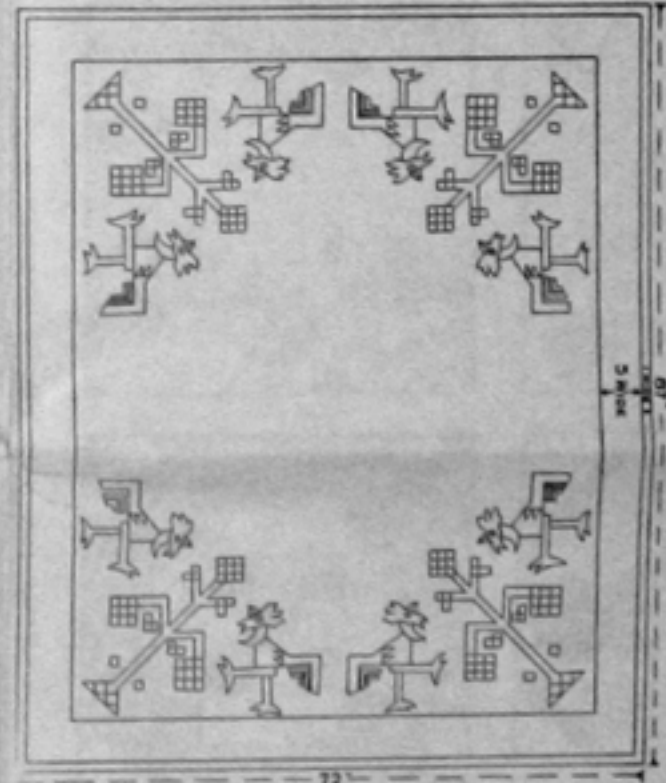
DIAGRAM OF THE QUILT



Pieces, Colors, and Yardage Required

Pieces	Yardage	Pieces	Yardage
Part 1—10	1/2 yd. Tangerine	Part 4—10	1/4 yd. Burnt Orange
Part 6—20		Part 13—10	
Part 7—10		Part 14—10	
Part 12—20	1 yd. Wild Rose	Part 5—10	2 1/4 yds. Cardinal Red
Part 2—10		Part 8—10	
Part 3—10		Part 11—10	
Part 15—10	1/2 yd. Oak (medium yellow)	Border (pieces)	1 yd.
Part 1—10		Blocks	
Part 16—10		Border*	
Part 17—10			

* Piece each short border in the center. Calculated for material one yard wide. Provide enough additional material for the quilt back.



NOTICE
 Wrappers for cotton having working patterns for quilts printed thereon are covered by application for letters patent in the U.S. of States 1 year Office.
 Copyright 1930
 THE STEARNS & FOSTER COMPANY
 Lakeland, Cincinnati, Ohio

MOUNTAIN MIST PATTERNS are obtainable only with the purchase of Mountain Mist Quilting Cotton. One pattern, (no choice of design), is furnished free with each lot purchased, and also a coupon good for one other pattern at a very low price.