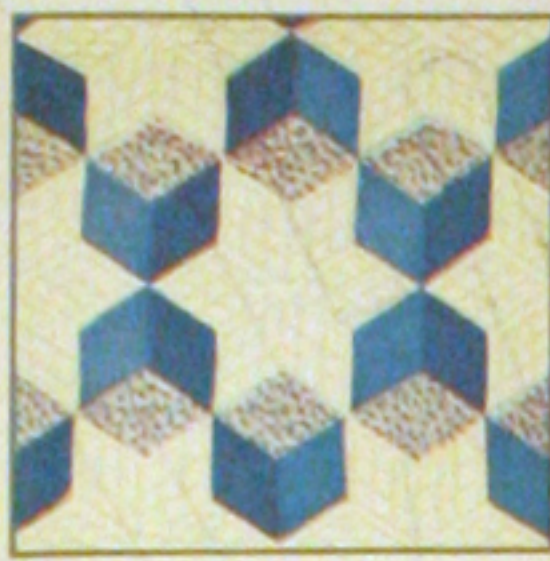




76-FLORAL WREATH



6-TUMBLING BLOCKS



24-DANCING DAFFODILS



70-STAR BRIGHT



39-POINSETTIA



47-WATER LILIES



28-MARTHA'S VINEYARD



34-HOMESPUN



6-SUNFLOWER



8-IRIS



31-DOUBLE WEDDING RING



E-THE LONE STAR



100-STAR OF BLUEGRASS



50-APPLE BLOSSOMS



83-COUNTRY GARDENS

Save THE QUILT PATTERN which is printed on reverse side of this wrapper. You may obtain the pattern for any quilt design illustrated by using the coupon which is printed in the lower right-hand corner of this wrapper.

1 lb. 3 oz.

ONE SEAMLESS SHEET

FULL QUILT SIZE - 81 BY 96 INCHES

# MOUNTAIN MIST

REG. U.S. PAT. OFF AND IN CANADA

NEEDLE-EASY "GLAZENE" FILLING for QUILTS

Uniform in Thickness • Does Not Stretch Thin • Makes a Quilt That Will Wash Beautifully

THE STEARNS & FOSTER COMPANY  
LOCKLAND, CINCINNATI, OHIO

Form 106  
© 1954 S & F CO.  
LITHO IN U.S.A.

Guaranteed by the Manufacturer  
100% NEW S & F MATERIAL  
OHIO REGISTRY No. 52



73-TURKEY TRACKS



8-NEW YORK BEAUTY



38-DOVE WOOD



30-BOSTON COMMONS



64-COUNTRY LANES



62-SPRING WREATH



30-GRAND ROSE



75-DRESDEN PLATE



78-DAISY CHAIN

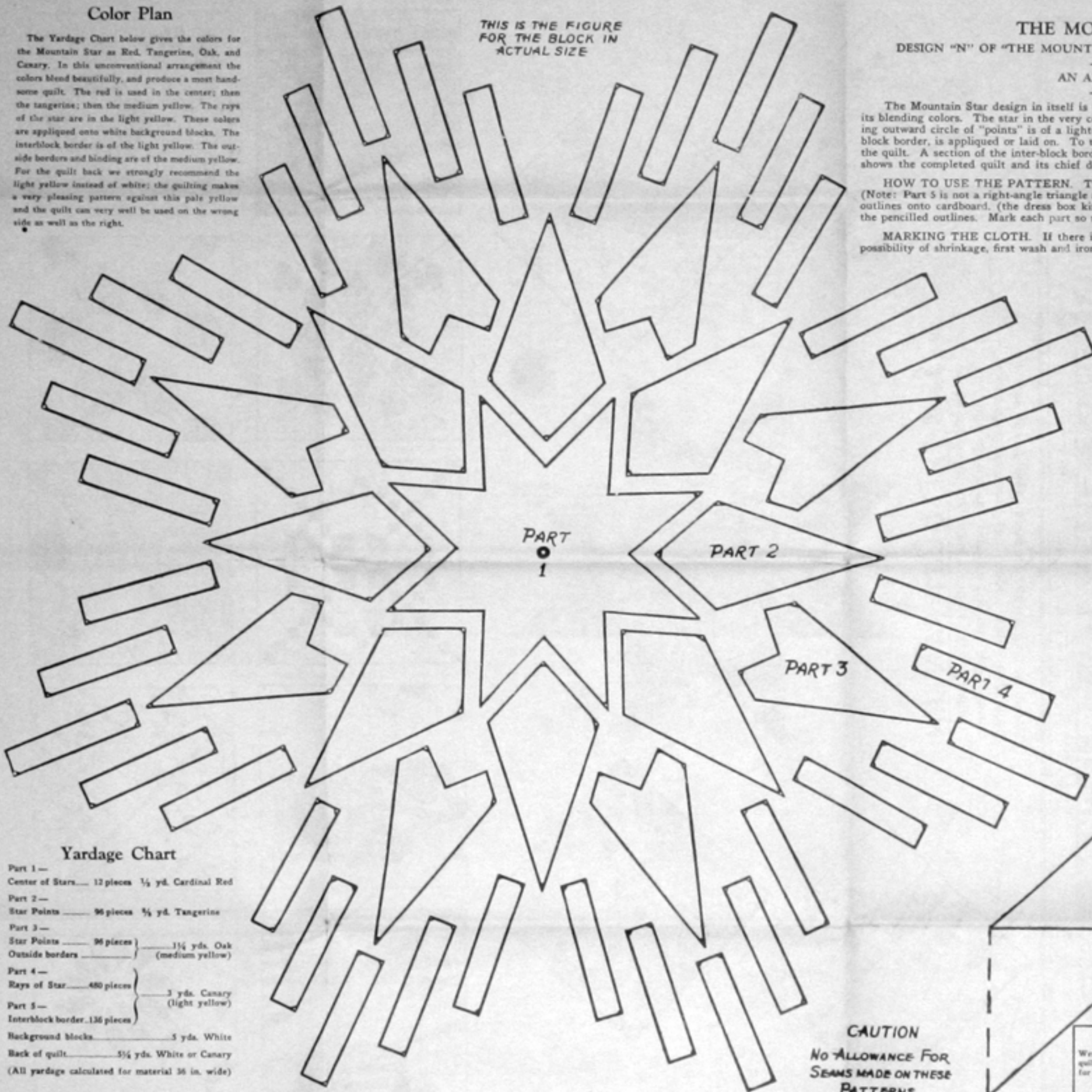


51-POMEGRANATE

### Color Plan

The Yardage Chart below gives the colors for the Mountain Star as Red, Tangerine, Oak, and Canary. In this unconventional arrangement the colors blend beautifully, and produce a most handsome quilt. The red is used in the center; then the tangerine; then the medium yellow. The rays of the star are in the light yellow. These colors are appliqued onto white background blocks. The interblock border is of the light yellow. The outside borders and binding are of the medium yellow. For the quilt back we strongly recommend the light yellow instead of white; the quilting makes a very pleasing pattern against this pale yellow and the quilt can very well be used on the wrong side as well as the right.

THIS IS THE FIGURE FOR THE BLOCK IN ACTUAL SIZE



### THE MOUNTAIN STAR

DESIGN "N" OF "THE MOUNTAIN MIST SERIES" OF QUILT PATTERNS

AN APPLIQUE QUILT

The Mountain Star design in itself is unusual and fascinating, but its greatest charm lies in its blending colors. The star in the very center of the figure is deepest in color and each succeeding outward circle of "points" is of a lighter tone. The entire star design, as well as the inter-block border, is appliqued or laid on. To the left is the figure for a single block (actual size) of the quilt. A section of the inter-block border is also shown in full size. The diagram on the right shows the completed quilt and its chief dimensions.

**HOW TO USE THE PATTERN.** Thru thin paper trace an outline for each of the parts. (Note: Part 5 is not a right-angle triangle and should not be treated as such.) Paste these paper outlines onto cardboard. (the dress box kind is suitable), and cut out the cardboard exactly on the pencilled outlines. Mark each part so made with its number, as shown on the pattern.

**MARKING THE CLOTH.** If there is any doubt about the fastness of color or if there is a possibility of shrinkage, first wash and iron the cloth. Now with a soft lead pencil outline the cardboard patterns on the cloth, being careful to space the outlines far enough apart so as to allow for 1/4 inch seams when the pieces are cut out.

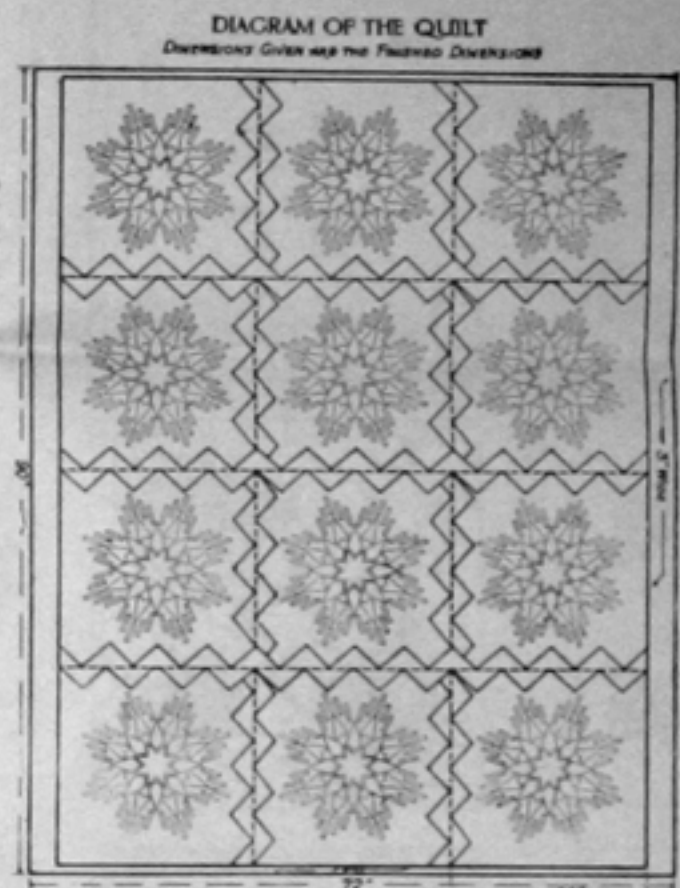
**CUTTING THE CLOTH.** Now cut out the pieces or parts allowing 1/4 inch for seams. Also cut the twelve background blocks. These are to be made 22 1/2 inches square (this allows for 1/4 inch seam) and for the sake of economy these squares are to be made from two pieces of cloth. It will also be necessary to piece the side and end borders, the side borders being made 3 1/2 by 90 1/2 inches and the end borders 1 1/2 by 72 1/2 inches (this allows for 1/4 inch seams).

**LOCATING POSITION FOR PIECES ON BLOCK BACKGROUND.** With a darning needle pierce the white dots shown in three corners of each part of the full size figure for the blocks. Place this full size figure for the block over one of the 22 1/2-inch squares of cloth, so that the center of the pattern falls exactly on the center of the cloth. Pin the paper to the cloth and with a soft pencil make a mark thru each hole on to the cloth, thus marking the location for each part. Have the stars point in the same direction on all twelve blocks.

**APPLIQUEING THE BLOCKS.** Before basting the pieces of cloth in their proper place on the cloth background, fold the turn-under and crease it with the finger nail along the pencilled lines. At this point it is also a good plan to notch the turn-under at the corners so that the pieces will lie flat. When the parts have been basted, whip in place, using thread of the same color as the part being appliqued.

**THE INTER-BLOCK BORDER.** When all twelve blocks have been completed and set together, proceed to the piecing of the inter-block border. Piece three of these zig-zag borders to run the width of the quilt and applique in place between the blocks. Likewise, piece and applique the eight short borders which will make up the borders running the length of the quilt between the blocks. When side and end borders have been set on, the quilt top is complete and should be carefully pressed so that all seams will be flat.

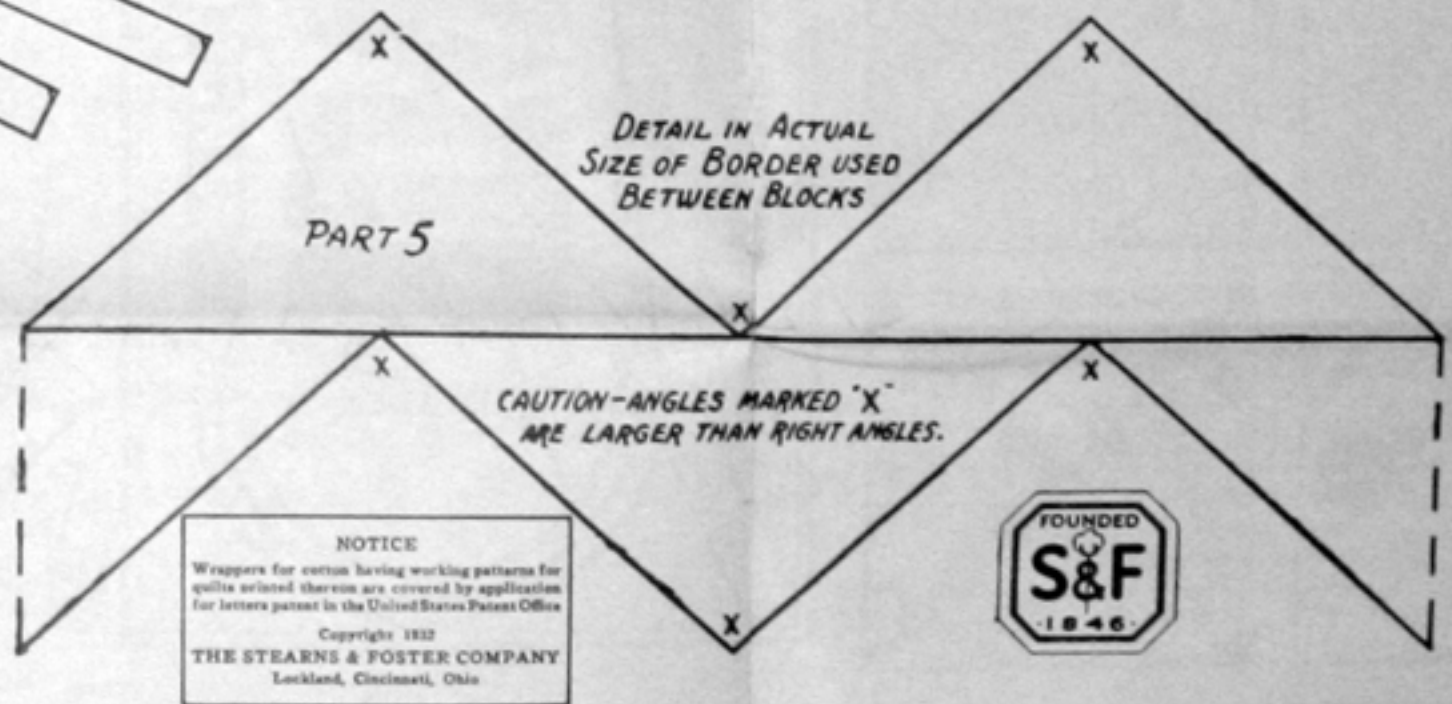
**QUILTING.** The final step is the actual quilting, which process includes the fixing of the quilt-back to the quilting frame; the spreading on of the Mountain Mist Quilting Cotton; the laying on of the quilt-top; the stretching and fastening the entire quilt to the frame; the marking of the quilting design; the actual quilting of the design and finally the binding and finishing of the edges of the quilt.



### Yardage Chart

- Part 1 — Center of Stars... 12 pieces 1/4 yd. Cardinal Red
  - Part 2 — Star Points... 96 pieces 5/8 yd. Tangerine
  - Part 3 — Star Points... 96 pieces } 1 1/4 yds. Oak (medium yellow)
  - Outside borders... } (medium yellow)
  - Part 4 — Rays of Star... 480 pieces } 3 yds. Canary (light yellow)
  - Part 5 — Interblock border... 136 pieces } (light yellow)
  - Background blocks... 5 yds. White
  - Back of quilt... 5 1/4 yds. White or Canary
- (All yardage calculated for material 36 in. wide)

CAUTION  
No ALLOWANCE FOR SEAMS MADE ON THESE PATTERNS



NOTICE  
Wrappers for cotton having working patterns for quilts printed thereon are covered by application for letters patent in the United States Patent Office.  
Copyright 1932  
THE STEARNS & FOSTER COMPANY  
Lockland, Cincinnati, Ohio

