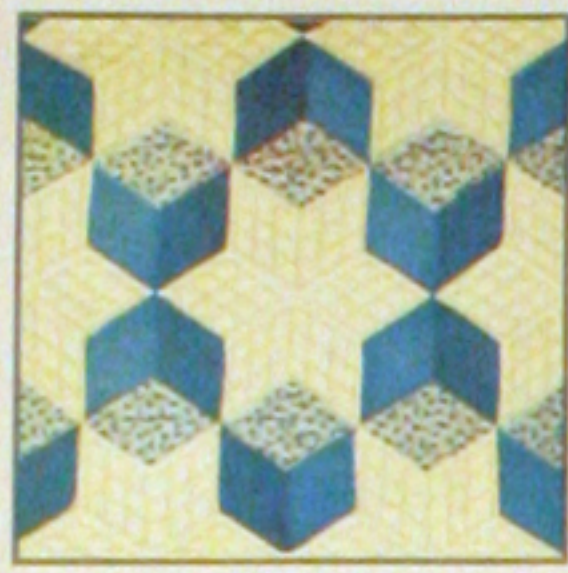




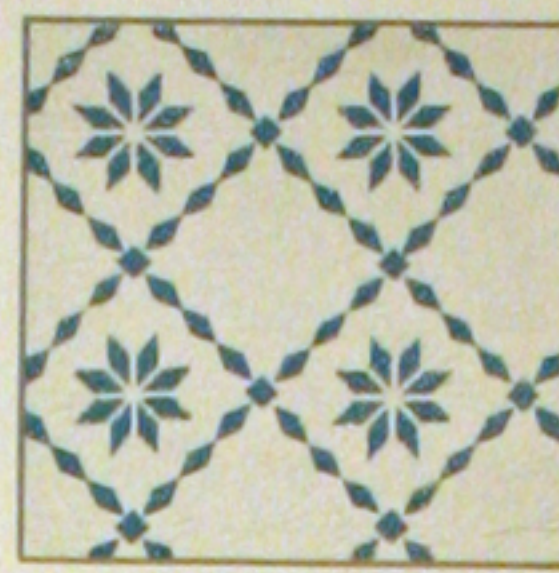
74-FLORAL WREATH



A-TUMBLING BLOCKS



107-DEW DROP



70-STAR BRIGHT



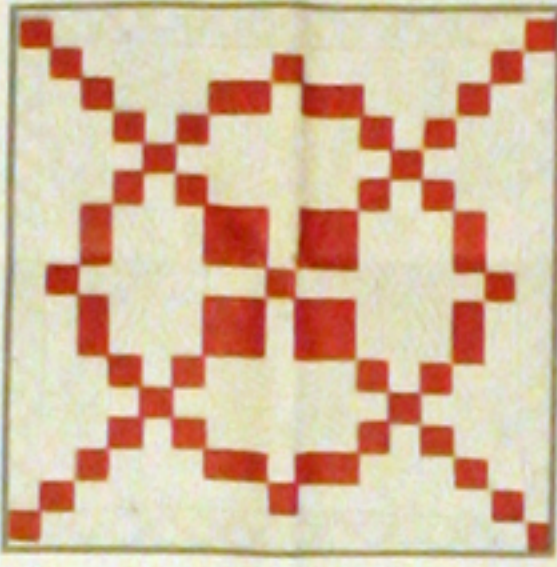
15-GRANDMOTHER'S FLOWER GARDEN



119-DADDY HEX



28-MARTHA'S VINEYARD



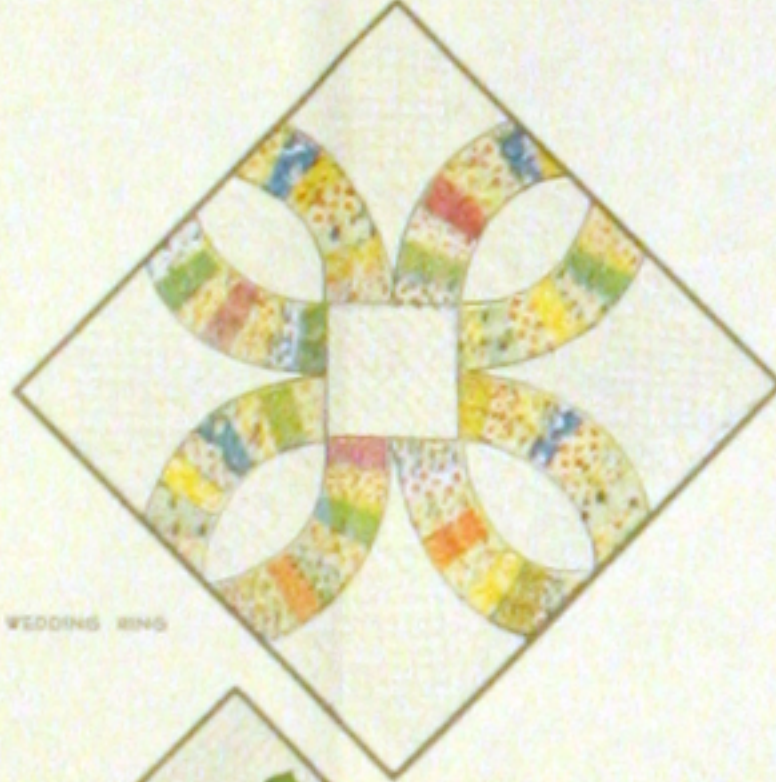
34-HOMESPUN



F-SUNFLOWER



8-IRIS



21-DOUBLE WEDDING RING



E-THE LONE STAR



100-STAR OF BLUEGRASS



50-APPLE BLOSSOMS

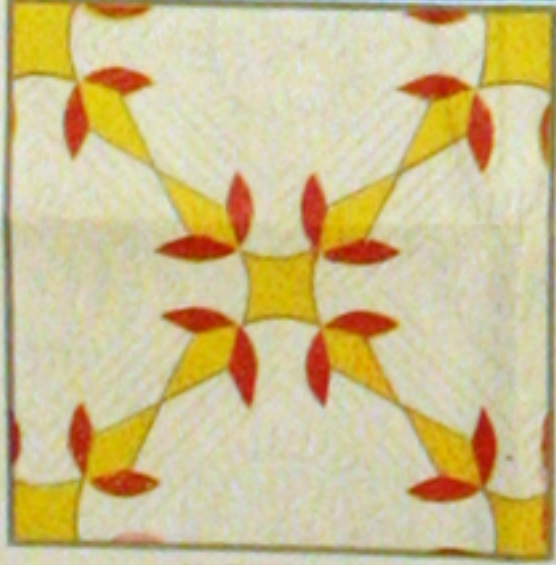


83-COUNTRY GARDENS

SAVE THIS WRAPPER
 THERE IS A VALUABLE QUILT PATTERN
 ON THE REVERSE SIDE.
NOTE - Patterns for quilts shown on this
 wrapper and in our catalog may be ordered at
 a saving with the coupon which is printed below.

1 lb. 3 oz.

ONE SEAMLESS SHEET
FULL QUILT SIZE - 81 BY 96 INCHES
MOUNTAIN MIST
 REG. U.S. PAT. OFF. AND IN CANADA
NEEDLE-EASY "GLAZENE" ALL COTTON FILLING
Uniform in Thickness • Does Not Stretch Thin • Makes a Quilt That Will Wash Beautifully
 THE STEARNS & FOSTER COMPANY LOCKLAND, CINCINNATI OHIO
 ALL COTTON
 100% NEW MATERIAL
 OHIO REGISTRY No. 52



23-TURKEY TRACKS



X-NEW YORK BEAUTY



74-DOROTHY



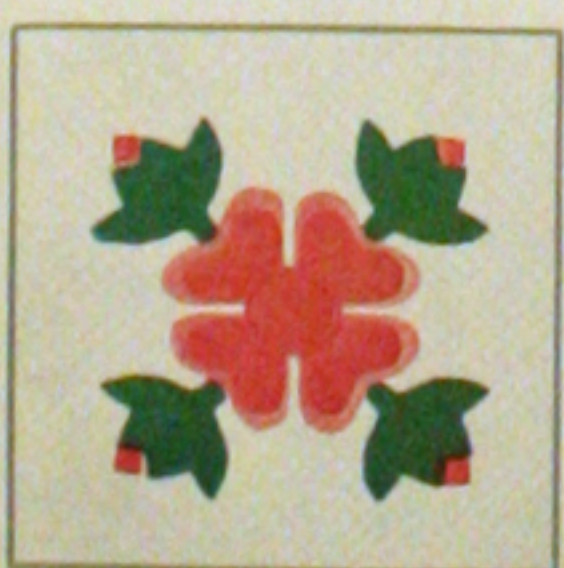
30-BOSTON COMMONS



54-COUNTRY LANES



93-SPRING WREATH



20-OHIO ROSE



73-PINNERPLATE



76-BABY CHAIN

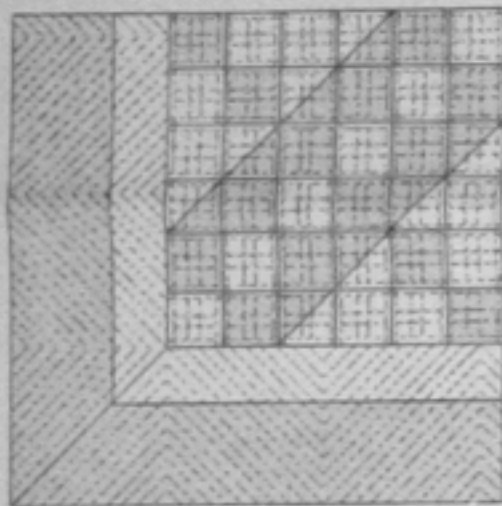


104-COLUMBINE



HOW TO ORDER PATTERNS
 Printed on the other side of this wrapper you will find one of our famous quilt patterns. If it does not
 suit your needs we will be glad to send you your choice of any of the patterns illustrated on this wrapper
 or in our free catalog at a cost of 20¢ each, with this coupon. The regular price of our patterns is 35¢.
 Address: THE STEARNS & FOSTER CO., QUILT DEPARTMENT, Cincinnati 15, Ohio, U. S. A.
 Name _____
 Street _____
 City _____

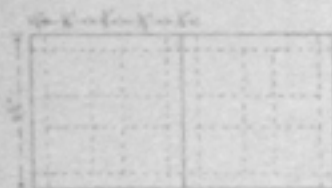
Suggestions For Quilting PATTERN "O"



This diagram of a corner of the Jacob's Ladder quilt shows the method of quilting both blocks and borders.

Simple quilting, marked with ruler and pencil, is usually chosen for pieced quilts of this type. And though there are many and varied ways of quilting the Jacob's Ladder quilt, the following plan is presented to quilters who are looking for something that is both appropriate and a little out of the ordinary.

First, with ruler and pencil, mark continuous lines about 1/8-inch on either side of each seam. This includes all the seams that run the length and breadth of the quilt, but not the ones that run diagonally (connecting the small blue and white triangles). Next rule parallel lines three-fourths of an inch on either side of the lines previously marked. However, do not make these lines continuous! They should not cross over the seams between the individual pieces of the quilt at any point; they should "stop" when they reach the lines that run along the edges of the pieces just inside the seams. This is illustrated in the diagram showing a corner of the quilt (above), and also on the two quilt pieces shown below. An attractive double check results.



(Left) Overhalf size diagram of one of the pieces that go to make up the individual blocks. The quilting described above is shown here in detail. Note how the quilting along the seams is continuous, while the quilting on each piece does not extend over into the seams.

It is further suggested that the blue and white border be quilted with parallel rows of quilting that run from the outside edge to the inside and back again in a continuous zig-zag. These rows may be as far apart or as close together as the individual taste dictates. Also, should less detail be preferred on the body of the quilt, use single lines instead of the double ones; this will result in single instead of double creases on each piece.

When the quilting is completed, remove any remaining pencil marks with an "Art Gum" eraser.

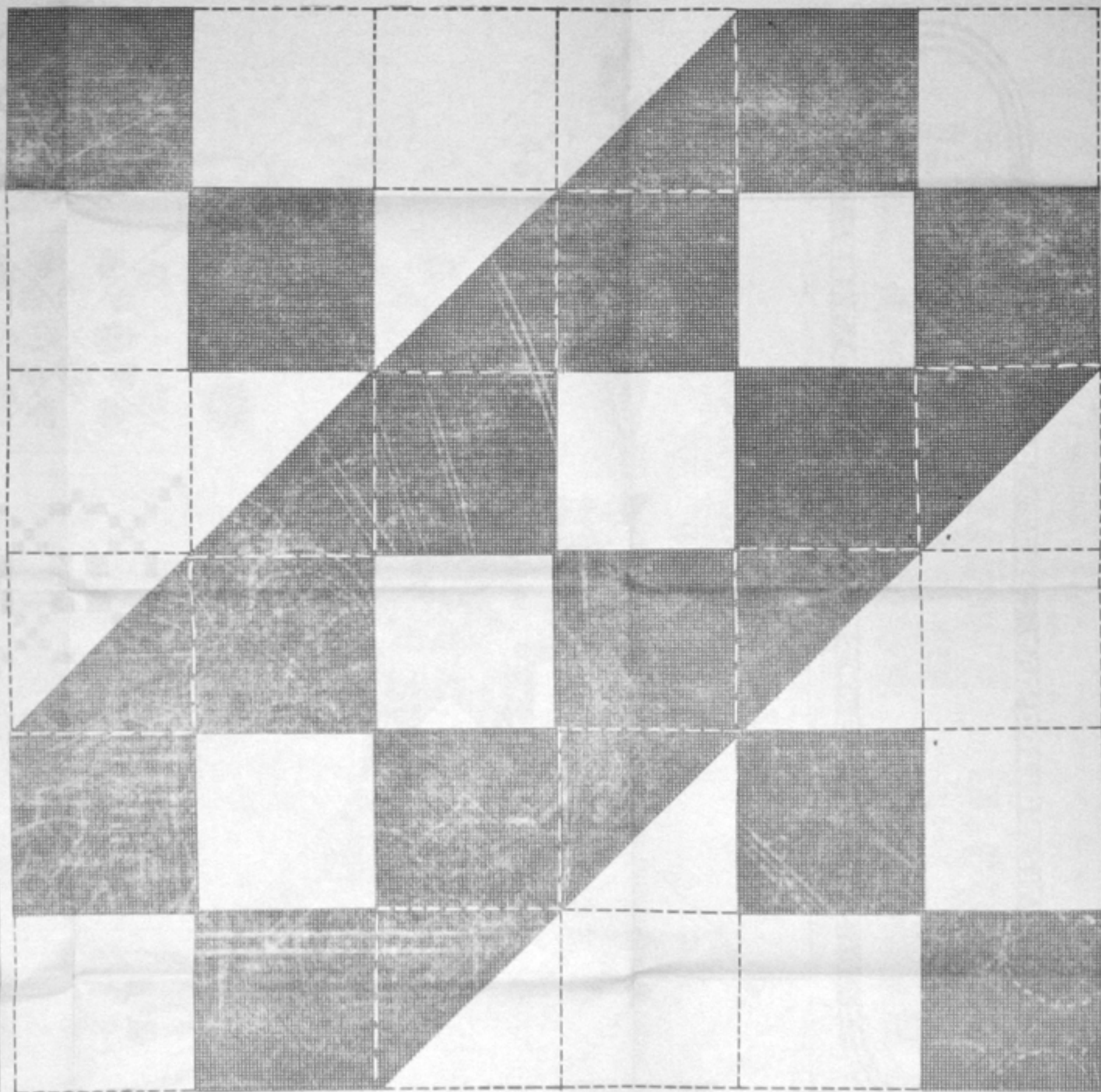
Signing a corner of your quilt, with name and date, does "in" to your work today, and will add to its prestige many years hence.

FOR A LARGER QUILT, measuring 81 x 96", use the thirty blocks instead of twenty, five joined seams, and six darts. With one border, the top will measure 75 x 90". To this add, first, a white border, cut to finish 1 1/2" wide, and then a blue border finishing 1 1/2" wide. The result is a generously sized quilt, large enough for a double bed. Yards Required: 3 yds. Blue, 4 1/2 yds. White. Provide additional material for back and binding.

NOTE: This quilt can be enlarged to the above size, or to almost any other size required, by making adjustments in blocks or borders. First measure the bed to determine the size needed.

NOTICE
Respect for the author's copyright is essential for the proper protection of the design. Please do not copy or reproduce the design without the written permission of the author. Copyright 1938 THE STEAGS & POSTER COMPANY, Lakeland, Cleveland, Ohio.

THIS IS THE FIGURE FOR THE BLOCK IN ACTUAL SIZE



JACOB'S LADDER Design "O" of The Mountain Mist Series of Quilt Patterns A Pieced Quilt

The simple geometric figures and the piece size considerations give the quilt a design that is delightful and quiet. Being constructed mainly of small squares and triangular pieces, the design is easily followed. It consists of twenty 12 by 12 inch blocks. To the left is shown a single block in the actual size as it should appear in the completed quilt. Below is a diagram of the quilt (shown reduced in size) showing the chief dimensions when finished. A pattern in actual size is also shown for both the square and the triangle.

COLOR SCHEDULE. This quilt is to be made of white and one other color. To simplify our directions we shall refer to this other color as blue, but, of course, you will select a color to suit the color arrangement of the border. The white pieces shown on the pattern are to be white and the shaded pieces are to be blue. The outside border is also blue.

GENERAL DIRECTIONS

1. First make cardboard patterns for the two pieces. The triangle and the square shown below can be pinned directly onto this cardboard. Cut out accurately along the lines.
2. If there is any doubt about the fairness of the color, or if there is a possibility of shrinkage, first wash and iron the cloth. (Note: If the cloth for the top is washed, also wash the material for the quilt back.) Now cut off the strips for the border. For the outer border (blue) cut two strips measuring 4" x 96", and two measuring 3 1/2" x 72 1/2". This allows for seams. For the inside border (white), cut two strips measuring 3" x 96", and two measuring 3" x 72 1/2". From the remaining cloth cut 200 pieces of blue and 200 pieces of white in squares measuring 3 inches square; this allows 1/8 inch for seams. Also cut 100 triangles of blue and 100 triangles of white; the simplest way to make these is to cut, from each color, 80 squares measuring 3 1/2" x 3 1/2", then divide each of these squares in two diagonally and you will have the correct number of triangles, seams included.
3. Next comes an important step: marking the pieces of cloth. The "fit" of the whole quilt depends on this. Using your cardboard patterns

(as made under Pattern 1) outline the squares on each square of cloth, as well as the triangles on each triangle. Outline on the wrong side of the piece and use a sharp pencil. The 1/8-inch margin on all the pieces will be sufficient for the seams, and the provided outline on the back of each piece will show exactly where to join. Follow these lines in sewing the pieces and your quilt will go together just right and will lie smooth when quilted.

4. Each block is to be placed as a unit, as shown in the full size diagram. After all twenty blocks are made, press them and set them together as shown in the diagram of the quilt. Next attach the white and blue border strips, thus completing the quilt top. A final pressing and it is ready for quilting.

5. The quilting includes laying the quilt back to the quilting frame, spreading on the Mountain Mist Quilting Cotton, laying on the quilt top, stretching and tacking the entire quilt, marking and stitching the quilting design, and binding the edges of the quilt.

MOUNTAIN MIST PATTERNS are obtainable only with the purchase of Mountain Mist Quilting Cotton. In addition to the pattern printed on the inside of the wrapper of each roll you buy, there is even one which, with 20¢, is good for one additional pattern. Patterns cannot be exchanged.

YARDAGE

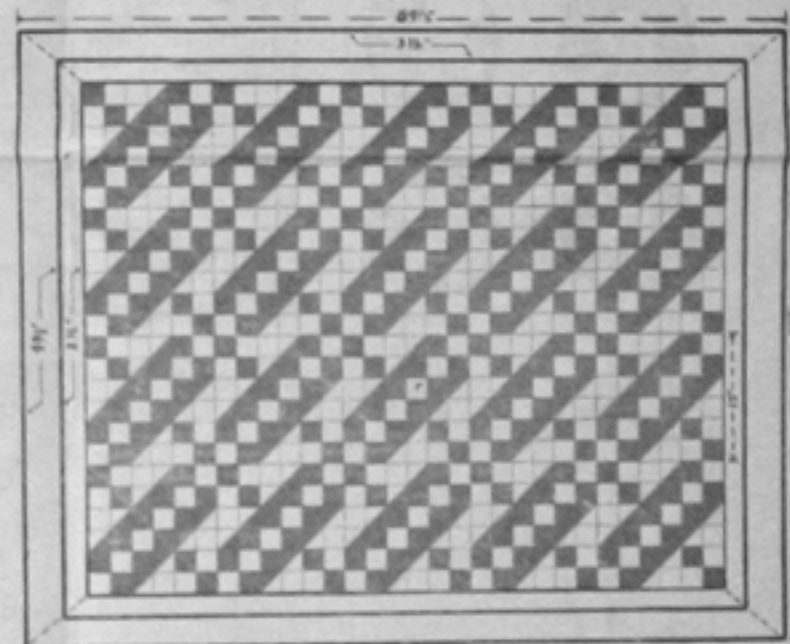
Calculated for material 36" wide

200 squares	}	4 1/2 yds. blue
100 triangles		
Outer border	}	2 1/2 yds. white
200 squares		
100 triangles		
Inner border	}	2 1/2 yds. white
200 squares		
100 triangles		

Provide additional material for quilt back, and blue tape for binding the edges of the quilt.

DIAGRAM OF THE QUILT

Dimensions Given are the Finished Dimensions



CAUTION
NO ALLOWANCE FOR SEAMS MADE ON THESE PATTERNS