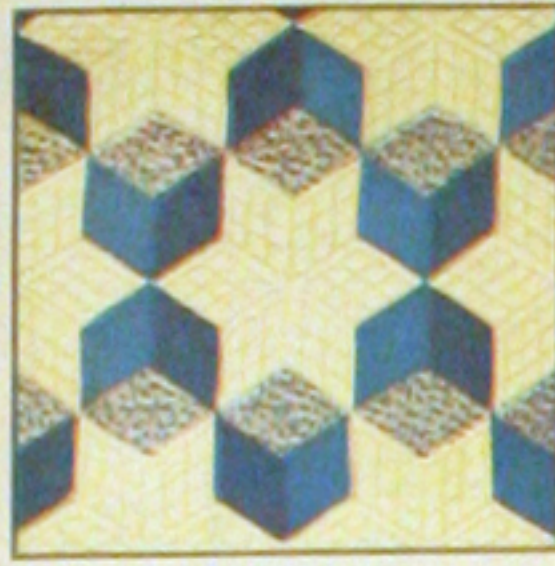




74—FLORAL CAMEO



A—TUMBLING BLOCKS



192—DEW DROP



70—STAR BRIGHT



25—GRANDMOTHER'S FLOWER GARDEN



118—DADDY HEX



28—MARTHA'S VINEYARD



36—HOMESPUN



P—SUNFLOWER



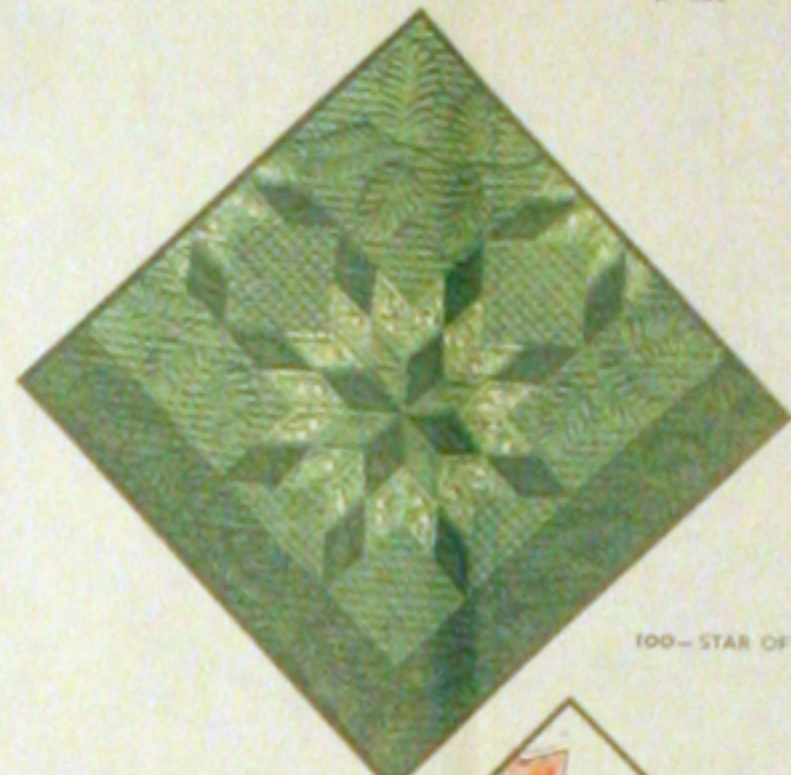
R—IRIS



31—DOUBLE WEDDING RING



E—THE LONE STAR



100—STAR OF BLUEGRASS



80—APPLE BLOSSOMS

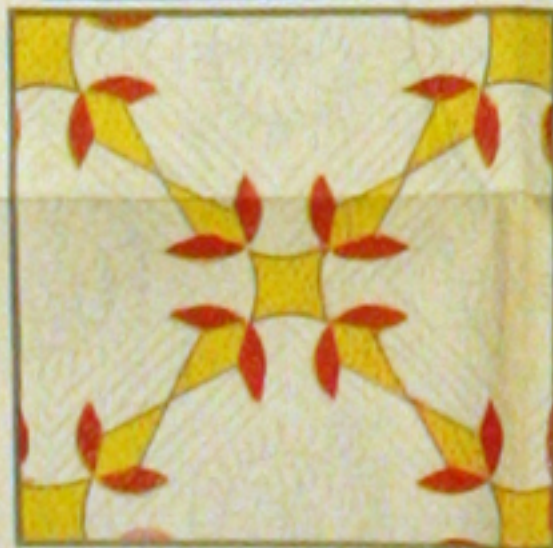


83—COUNTRY GARDENS

**SAVE THIS WRAPPER**  
 THERE IS A VALUABLE QUILT PATTERN ON THE REVERSE SIDE.  
**NOTE** — Patterns for quilts shown on this wrapper and in our catalog may be ordered at a saving with the coupon which is printed below.

1 lb. 5 oz.

ONE SEAMLESS SHEET  
**EXTRA LARGE SIZE - 81 BY 108 INCHES**  
**MOUNTAIN MIST**  
 REG. U.S. PAT. OFF. AND IN CANADA  
**NEEDLE-EASY "GLAZENE"™ ALL COTTON FILLING**  
*Uniform in Thickness • Does Not Stretch Thin • Makes a Quilt That Will Wash Beautifully*  
**THE STEARNS & FOSTER COMPANY** LOCKLAND, CINCINNATI OHIO  
 ALL COTTON 100% NEW SAF MATERIAL 0800 REGISTRY No. 52



23—TURKEY TRACKS



K—NEW YORK BEAUTY



29—DOGWOOD



30—BOSTON COMMONS



54—COUNTRY LAKES



93—SPRING WREATH



30—OHIO ROSE



75—DRESDEN PLATE



75—DAISY CHAIN



106—COLUMBINE



**HOW TO ORDER PATTERNS**  
 Printed on the other side of this wrapper you will find one of our famous quilt patterns. If it does not suit your needs we will be glad to send you your choice of any of the patterns illustrated on this wrapper or in our free catalog at a cost of 20¢ each, with this coupon. The regular price of our patterns is 35¢.  
**THE STEARNS & FOSTER CO., QUILT DEPARTMENT, CINCINNATI 15, OHIO, U. S. A.**

© 1952 Stearns & Foster Co.

## SUGGESTION FOR QUILTING

Design "P"

The diagram to the right, taken directly from the original Stearns & Foster "Sunflower," illustrates a particularly attractive quilting arrangement. The notable feature is the repetition of the sunflower theme in the quilting, with leaves, flower heads, and the large sunflower in the center panel.

First mark the long center panel, to be quilted with a large oval sunflower. To do this, locate the center of each side and end of the proposed area for the oval, and draw one-fourth of the curve (from middle of side to middle of end). It is best to mark this curve on cardboard, cut out, and use to outline all four sections to make up the complete oval. Next rule a small-sized check design (intersecting diagonal lines) in the oval; the surrounding petals can be marked from Part 3 of the block pattern.

The white spaces all over the quilt (excepting the center panel) are quilted with sunflower leaves, placed according to the individual taste so as to cover the space in the most artistic manner. Use about four different leaves to mark the quilting. The two whole leaves, Parts 5 and 6, as given on the block pattern, can be used as they are; cut down Part 6 about one-fourth inch all around to mark the next smallest leaf, and cut it down about one-fourth inch more for the smallest.

Also an exact reproduction of the sunflower head is quilted in each corner as shown. This can easily be marked from the same pattern that is used for the appliqued block.

All of the appliqued flowers, stems and leaves, are, of course, outlined with quilting stitches. Each flower petal is quilted through the center, and the centers of the flowers are quilted in small diamonds (easily marked with pencil and ruler). Also a "vein" is quilted into each leaf, as shown above.

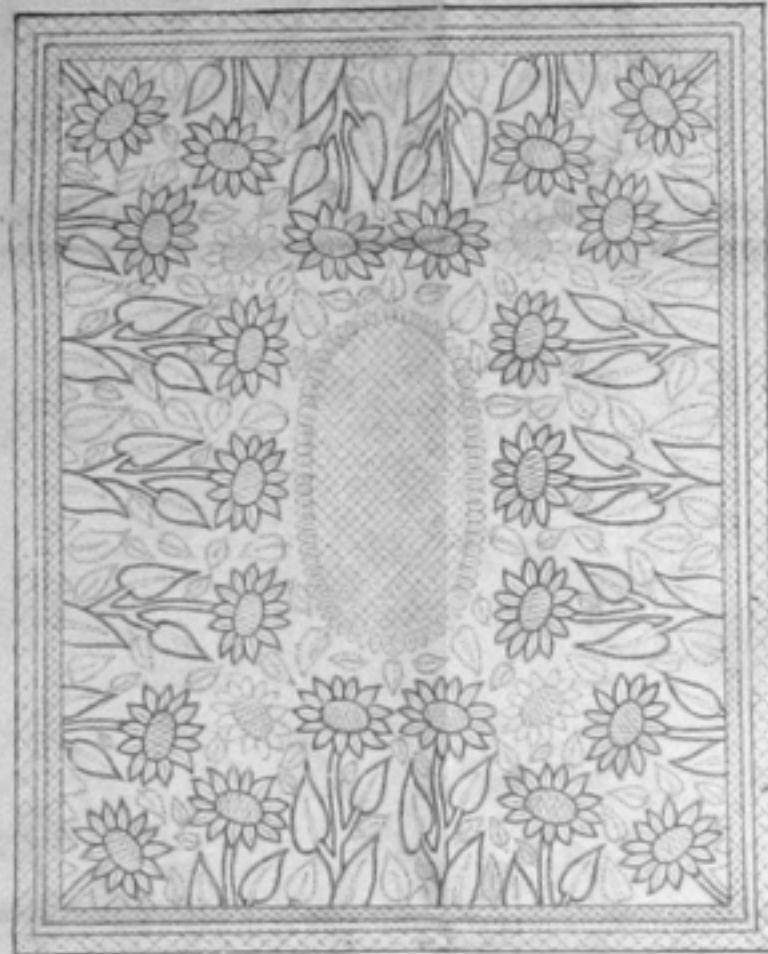
The border is quilted as follows—inner strip, one row of small checks (intersecting diagonals); middle strip, two lines along the seams; outer strip, one row of large checks.

If one wishes to sign the quilt with name and date of making, this record may well be substituted for the diamonds in the center part of one of the corner flowers.

If the pencil marks are lightly made, they can be erased with an "Art Gum" eraser.

**FOR A LARGER QUILT,** measuring 78 x 95½" these changes in the border section of the quilt are suggested: inner border green, 2" wide; middle border yellow, 2½" wide; outer border brown, 3" wide. These are the finished, not the cutting widths. (By way of innovation, it is suggested that the border corners be appliqued as follows: applique tips of two petals in the corners of the green border; let a portion of brown Part 4 appear in the corners of the middle (yellow) border; and in the corners of the outer (brown) border place three petals, suggestive of the appearance of the complete flower. This additional applique need not be worked into each corner; one or two corners done in this manner will lend individuality to the quilt.) **Yardage Required:** Moss, same as for small quilt; provide 2½ yds. Oak, and 1½ yds. Brown instead of yardage shown on chart. Provide additional material for back and binding.

**NOTE:** This quilt can be enlarged to the above size, or almost any exact size required, by making adjustments in the blocks or borders. Always measure the bed to determine the size needed.



## THE SUNFLOWER

### Design "P" of the "Mountain Mist Series" of Quilt Patterns

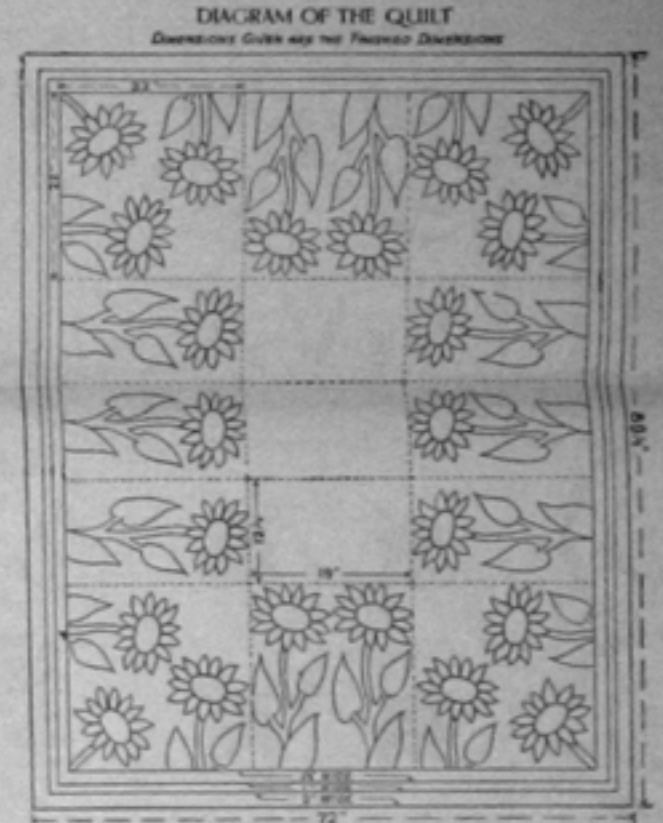
This appliqued quilt is as cheerful and bright as real sunflowers themselves; the bright yellow, brown, and green carry out the natural sunflower colors. The quilt, diagram right, is made up of 15 blocks. Below is shown the actual size pattern for the flower; the dotted lines indicate how much of the figure is used for the corner flowers.

#### GENERAL INSTRUCTIONS

1. Thru thin paper trace outlines (from the actual size figure) of all of the parts. Paste these tracings onto cardboard, (the dress box kind is suitable), and cut out along the penciled lines. Mark each part so made with its number, as shown on the original pattern.
2. If there is any doubt about the fastness of color, or if there is a possibility of shrinkage, first wash and iron the material. Then, before marking off the parts, cut the border strips from each color of cloth. The colors for the border are green, brown, and yellow (from the inside to the outer strips); for the sake of economy, piece each strip in the center. Also cut the white background blocks. These blocks are of different size; the four corner blocks are

cut to finish 22" square, the two end center blocks 19" x 22", and the nine smaller blocks, 12 1/6" x 22".

3. Now with a soft pencil outline the required number of parts on each color of cloth. "Dove-tail" the parts together when possible, but be careful to allow ¼-inch extra on all sides for seams. Cut out the parts, making the seam allowance. (Note: there are only 10 complete flowers in the quilt; the corner blocks show only the flower heads and a part of the leaves; the Yardage Chart takes this into consideration.)
4. To locate the flower positions on the blocks, place the actual size pattern over each block and mark thru the paper the proper position for each part as shown on the diagram of the quilt. Then, folding the turn-under back to the penciled lines, baste each part in position. Applique with thread of the same color as the cloth being sewed.
5. Next set the blocks together, as shown in the diagram of the quilt. The three plain white blocks are in the middle of the quilt top and offer an unusual opportunity for fancy quilting.
6. Now sew on the green, brown, and yellow borders. It is advisable at this point to press the completed quilt top.



7. The final step is the actual quilting, which includes the fixing of the quilt back to the quilting frames; the spreading on of the Mountain Mist Quilting Cotton; the laying on of the quilt top; the stretching and fastening of the entire quilt to the frame; the marking and stitching of the quilting design; and, finally, the binding of the edges of the quilt.

**MOUNTAIN MIST PATTERNS** are obtainable only with the purchase of Mountain Mist Quilting Cotton. One pattern, (no choice of design), is furnished free with each bat purchased, and also a coupon good for one other pattern at a very low price.

#### PIECES, COLORS, AND YARDAGE REQUIRED

Part 1	88"	
Part 2	132"	2½ yards yellow (Canary)
Part 3	66"	
Border		
Part 4	22"	1½ yards brown (Medium)
Border		
Part 5	10 whole leaves	2½ yards green (Moss)
Part 6	8 half leaves	
Part 7	10	
Part 8	10 whole stems	
Part 9	8 half stems	
Border	4 small stems	

\* Cut half of these with the pattern reversed.  
\*\* Cut 22 of these with the pattern reversed.

Calculated for material one yard wide.

Provide enough additional material for the quilt back.



**NOTICE**  
Wagons for steam boring working patterns for quilting patterns are covered by application for letters patent in the United States Patent Office.  
Copyright 1930  
THE STEARNS & FOSTER COMPANY  
Eastland, Cincinnati, Ohio

