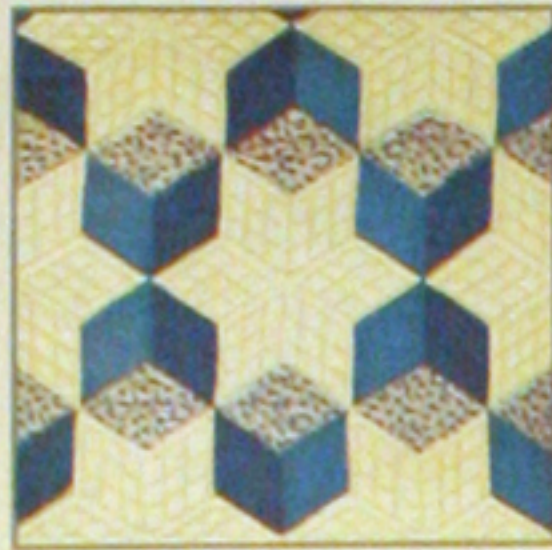




74-FLORAL WREATH



A-TUMBLING BLOCKS



60-DEEP DROP



70-STAR BRIGHT



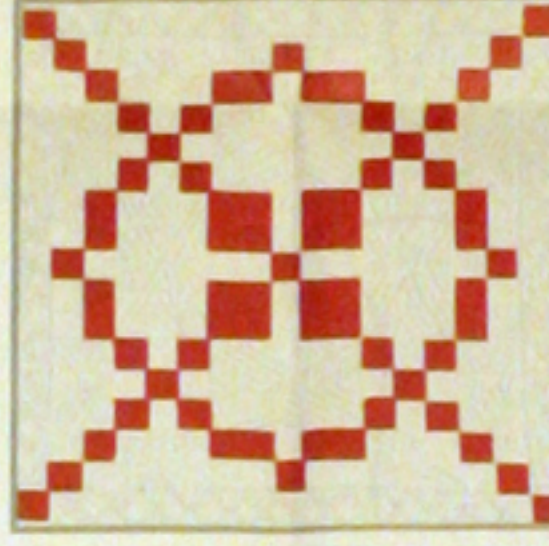
35-POINSETTIA



47-WATER LILIES



28-MARTHA'S VINEYARD



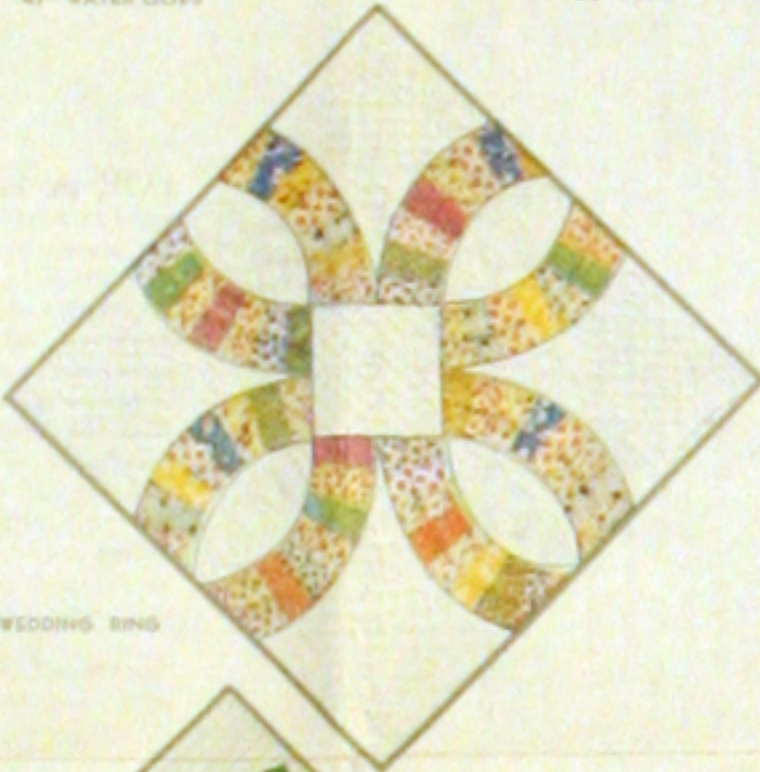
34-HOMESPUN



8-SUNFLOWER



5-IRIS



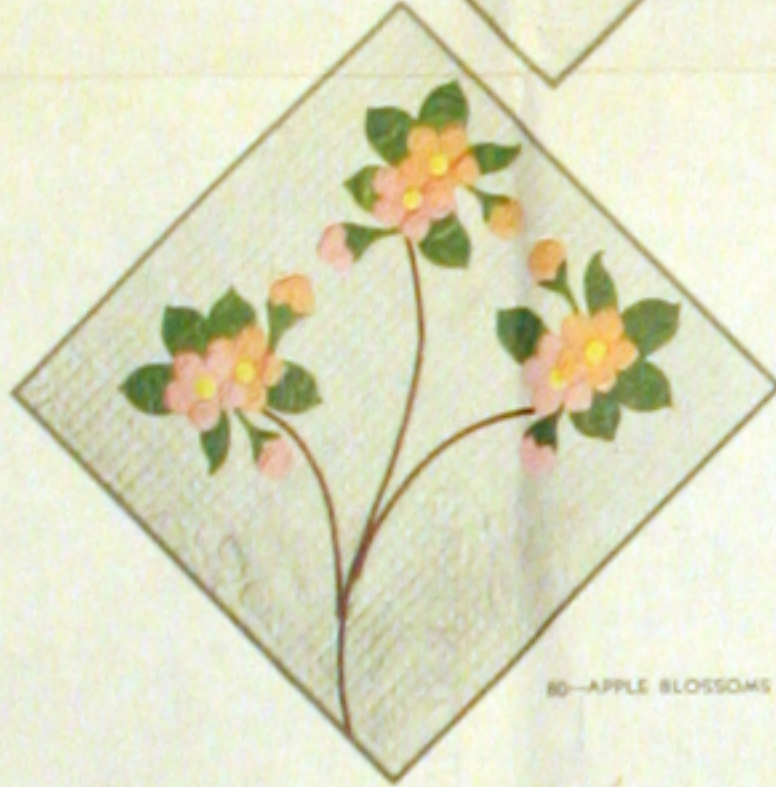
21-DOUBLE WEDDING RING



E-THE LONE STAR



100-STAR OF BLUEGRASS



80-APPLE BLOSSOMS



83-COUNTRY GARDENS

Save **THE QUILT PATTERN** which is printed on reverse side of this wrapper. You may obtain the pattern for any quilt design illustrated by using the coupon which is printed in the lower right-hand corner of this wrapper.

#R The Star

#R The Star © 1952

1 lb. 3 oz.

ONE SEAMLESS SHEET

FULL QUILT SIZE - 81 BY 96 INCHES

# MOUNTAIN MIST

REG. U.S. PAT. OFF. AND IN CANADA

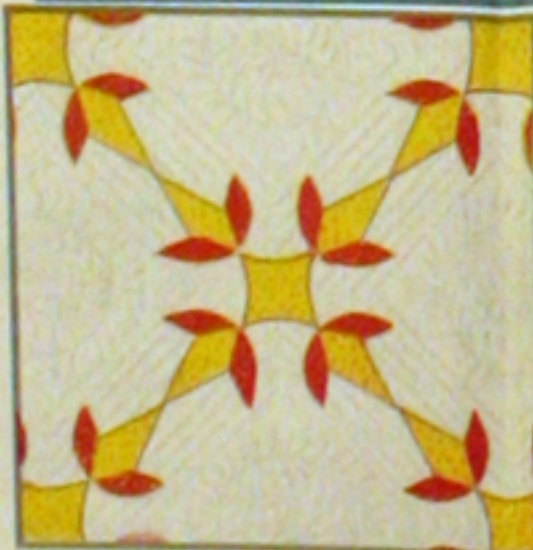
NEEDLE-EASY "GLAZENE" FILLING for QUILTS

Uniform in Thickness • Does Not Stretch Thin • Makes a Quilt That Will Wash Beautifully

THE STEARNS & FOSTER COMPANY LOCKLAND, CINCINNATI OHIO

ALL COTTON  
100% NEW MATERIAL  
OHIO REGISTRY No. 52

Form 108  
© 1954 S & F CO.  
LITHO IN U.S.A.



33-TURKEY TRACKS



3-NEW YORK BEAUTY



39-DOGWOOD



30-BOSTON COMMONS



54-COUNTRY LANES



## YARDAGE REQUIRED

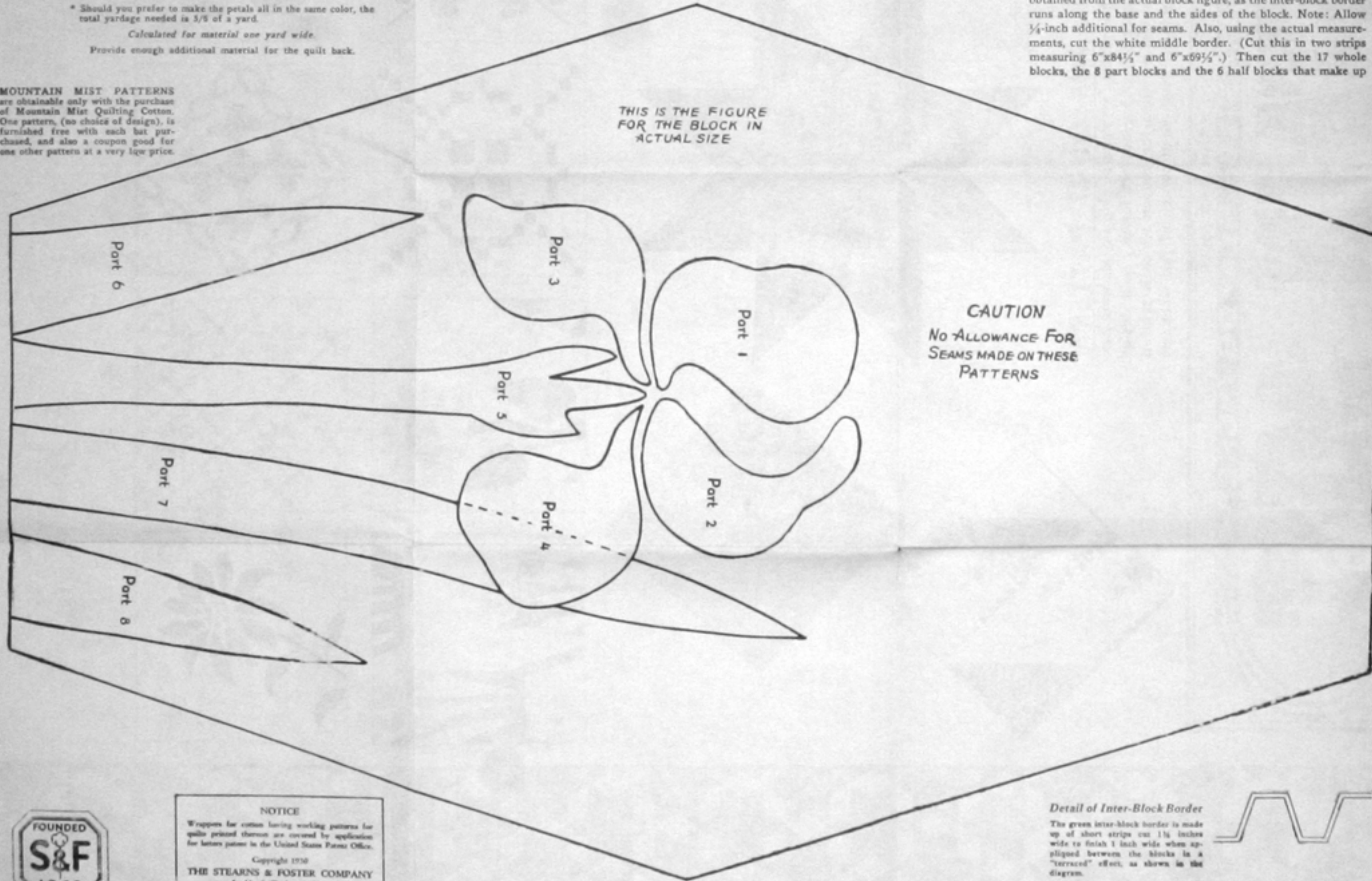
Stems	} 3 yards Emerald Green (C)
Leaves	
Inter-block border	
Border	} 7 1/2 yards White
Background blocks	
Border	
Petals*	4" Canary Yellow (A) 8" Dresden Blue (B, M) 4" Pilot Blue (D) 4" Oak (E) 4" Burnt Orange (F) 4" Pink (G) 4" Coralbell (H) 8" Strawberry (I, K) 4" Helle (J) 4" Lavender (L) 4" Tile Blue (N)

\* Should you prefer to make the petals all in the same color, the total yardage needed is 3/8 of a yard.

Calculated for material one yard wide.

Provide enough additional material for the quilt back.

**MOUNTAIN MIST PATTERNS** are obtainable only with the purchase of Mountain Mist Quilting Cotton. One pattern, (no choice of design), is furnished free with each lot purchased, and also a coupon good for one other pattern at a very low price.



## THE IRIS

### Design "R" of the "Mountain Mist Series" of Quilt Patterns

The charm of this beautiful and unusual Iris quilt lies in the natural treatment of the design. The finished quilt is a veritable garden of bloom in actual Iris colors!

Below is shown the actual size figure for the flower; the outline for cutting the block is also given. In the corner below (right) is a diagram of the quilt with its finished dimensions. The letters in the blocks represent the petal colors, as B—light blue petals, or M N—light blue upper petals with darker blue lower petals. (See Color and Yardage Charts.) The dotted lines show how the blocks are set together; the double line (including the dotted line) represents the inter-block border.

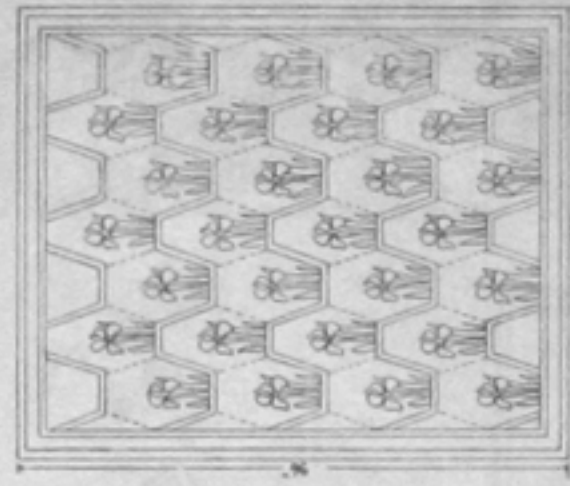
## GENERAL INSTRUCTIONS

1. Thru thin paper trace outlines for each of the eight parts (from the actual size figure). Paste these paper outlines onto cardboard, (dress box kind is suitable), and cut out the cardboard exactly on the penciled lines. Mark each part so made with its number, as shown on the original pattern.
2. If there is any doubt about the fastness of the color or if there is a possibility of shrinkage, first wash and iron the cloth. Before marking off the parts, first cut from the green material the 1-inch inside border and the 1 1/2-inch outside border; (these are the finished widths). Also cut the required number of strips, (see diagram of quilt), for the inter-block border. These strips are one inch wide; their other measurements are obtained from the actual block figure, as the inter-block border runs along the base and the sides of the block. Note: Allow 1/4-inch additional for seams. Also, using the actual measurements, cut the white middle border. (Cut this in two strips measuring 6"x84 1/2" and 6"x69 1/2".) Then cut the 17 whole blocks, the 8 part blocks and the 6 half blocks that make up

**FOR A LARGER QUILT**, measuring 78 x 96", make 28 whole blocks, 8 part blocks, 7 half blocks, and 2 corner blocks (instead of the 17 whole blocks, 8 parts, and 6 halves used for the small quilt). Assemble them as shown on the much-reduced drawing directly below. No additional flowers are cut, as the same number of appliqued blocks are made; the new material needed consists of additional green strips for the interblock border, and additional white blocks. Also, the three outer borders (green, white, and green) must necessarily be cut longer, due to the increased size of the quilt top; cut them to finish in the same widths as quoted for the small quilt. **Yardage Required:** Same as for smaller quilt, except provide 4 yds. Green, and 8 1/2 yds. White, instead of yardage shown on chart. Provide additional material for back and binding.

We suggest that the empty half blocks at the top and bottom of the quilt be quilted with the outline of the Iris and leaves.

**NOTE:** This quilt can be enlarged to the above size, or to almost any size, also required, by making adjustments in blocks or borders. First measure the bed to determine size needed.



### Suggestion for Quilting PATTERN "R"

**FOR** this colorful Iris quilt, a plain quilting design, which will emphasize the lines and color of the pattern itself, is best. Such a quilting plan as used for the original Mountain Mist Iris Quilt, is suggested.

Outline the leaves, stems and flower petals with tiny stitches just beyond the edges of these parts. Also outline the interblock border, running the stitches along just beyond the edges of the border; also run a single row of stitches all around the quilt top just inside the first green (1") border.

Now mark off the quilt top (excepting the border) with double diagonal lines intersected at right angles by double diagonals going the other way, which will result in a crisscross effect as shown in the diagram at the right. Starting with the first pair of diagonals, mark them about 1/2" apart; skip a pair of lines, mark another pair of lines, also 1/2" apart. Then skip an inch again, and so on until the background is marked off in both directions.

For the quilt border use parallel lines 1/2" apart. You can mark these as continuations of the diagonals going in one direction on the main part of the quilt, adding a two-way either row as that, on the border, there diagonal rows of stitching are all 1/2" apart.

The empty white half blocks at the bottom of the quilt afford excellent opportunity for signing the quilt with your name and the date of making.

Any pencil marks that show after the quilting is completed can easily be removed with an "Ary Gem" eraser.

the background of the quilt. With careful cutting, the white border and the blocks may easily be cut from 7 1/2 yards of cloth.

3. Now proceed to marking off the flower parts. With a soft pencil outline the required number of cardboard patterns on each color of cloth, being careful to space the outlines far enough apart to allow for 1/4-inch seams. Cut out the parts, making the seam allowance.
4. To locate the flower positions on the blocks, place the actual size pattern over each block and mark thru the paper the proper position of each part. Then fold the turn-under back to the penciled lines and baste the parts in position. (Note: use the letters M N, I, J, etc., on the quilt diagram as a guide for basting the petals.) Applique with thread of the same color as the cloth being sewed.
5. When the blocks, with the exception of the three plain half-blocks at the bottom, have been appliqued, set them all together as shown by the dotted lines on the diagram.
6. When the blocks have been set together, baste the narrow green inter-block border into place. (Note: this will go on easily and lie smoothly if the 1/4-inch seam allowance is first creased back and pressed down.) Applique with green thread.
7. The next step is the sewing on of the green, white, and green triple border that completes the quilt top.
8. The final step is the actual quilting, which includes the fixing of the quilt back to the quilting frame; the spreading on of the Mountain Mist Quilting Cotton; the laying on of the quilt top; the stretching and fastening of the entire quilt to the frame; the marking and stitching of the quilting design; and, finally, the finishing of the edges of the quilt.

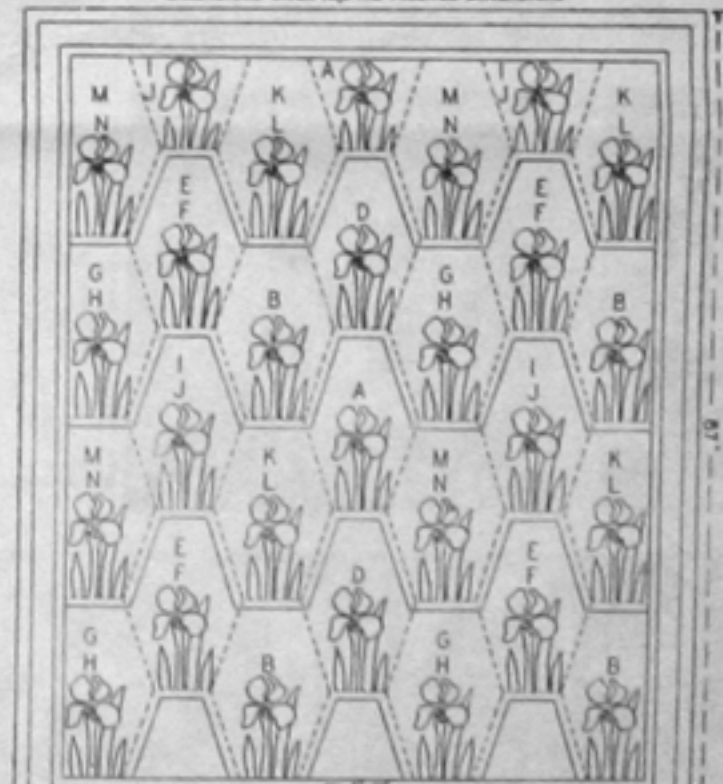
## COLORS USED

A light clear shade of green is used for the border, inter-block border, flower stems and leaves. The flowers themselves are mainly in two shades, with several all blue or all yellow ones for variation.

A—light yellow (Canary)	G—light pink
B—light blue (Dresden)	H—medium pink (Coralbell)
C—light green (Emerald)	I—medium rose (Strawberry)
D—medium blue (Pilot)	J—light lavender (Helle)
E—medium yellow (Oak)	K—medium rose (Strawberry)
F—burnt orange	L—lavender
	M—light blue (Dresden)
	N—medium blue (Tile)

## DIAGRAM OF THE QUILT

Dimensions Given are the Finished Dimensions



**Detail of Inter-Block Border**  
The green inter-block border is made up of short strips cut 1 1/2 inches wide to finish 1 inch wide when applied between the blocks in a "terraced" effect, as shown in the diagram.



**NOTICE**  
Wrappers for cotton having working patterns for quilts printed thereon are covered by application for letters patent in the United States Patent Office.  
Copyright 1930  
**THE STEARNS & FOSTER COMPANY**  
Lackland, Cincinnati, Ohio