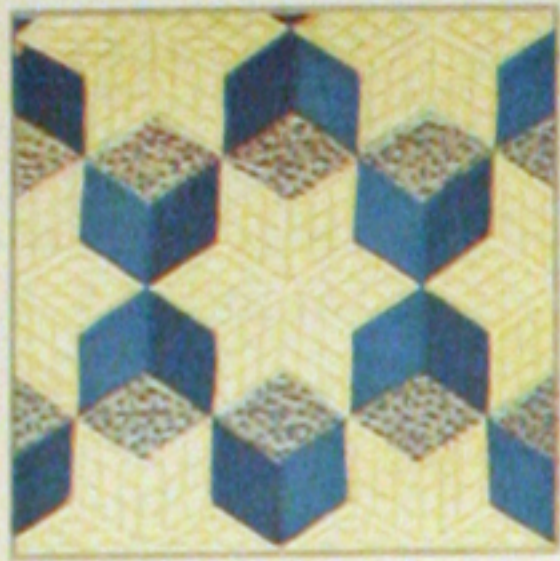




74-FLORAL WREATH



6-TUMBLING BLOCKS



102-DEVIL'S DROP



70-STAR BRIGHT



25-GRANDMOTHER'S FLOWER GARDEN



119-DADDY HEX



28-MARTHA'S VINEYARD



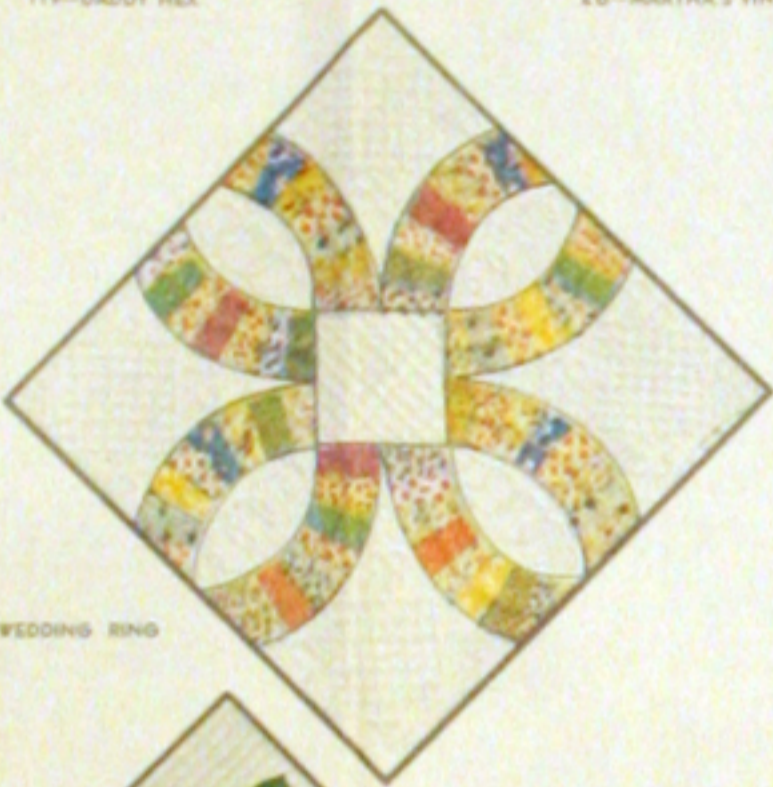
34-HOMESPUN



7-SUNFLOWER



8-IRIS



31-DOUBLE WEDDING RING



4-THE LONE STAR



100-STAR OF BLUEGRASS



80-APPLE BLOSSOMS



83-COUNTRY GARDENS

SAVE THIS WRAPPER  
THERE IS A VALUABLE QUILT PATTERN  
ON THE REVERSE SIDE.  
NOTE - Patterns for quilts shown on this  
wrapper and in our catalog may be ordered at  
a saving with the coupon which is printed below.

1 lb. 3 oz.

ONE SEAMLESS SHEET

**FULL QUILT SIZE - 81 BY 96 INCHES**

# MOUNTAIN MIST

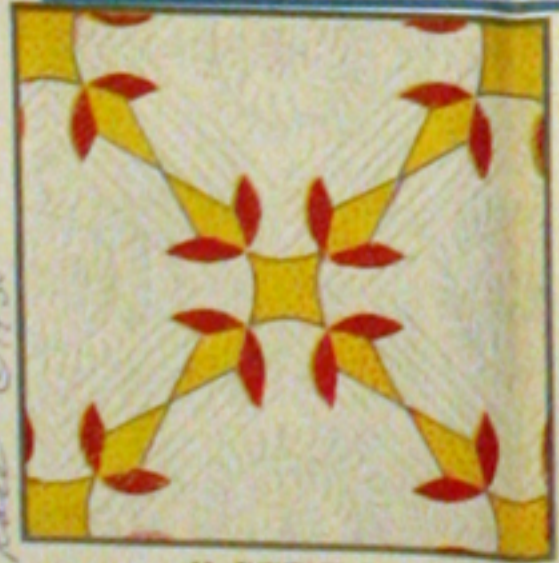
REG. U.S. PAT. OFF. AND IN CANADA

**NEEDLE-EASY "GLAZENE"™ ALL COTTON FILLING**

*Uniform in Thickness • Does Not Stretch Thin • Makes a Quilt That Will Wash Beautifully*

THE STEARNS & FOSTER COMPANY CINCINNATI OHIO 45215

ALL COTTON  
100% NEW MATERIAL  
ORD. REGISTRY No. 52



23-TURKEY TRACKS



4-NEW YORK BEAUTY



29-DOGWOOD



30-BOSTON COMMONS



64-COUNTRY LANES



93-SPRING WREATH



30-OHIO ROSE



75-DRESDEN PLATE



76-DAISY CHAIN

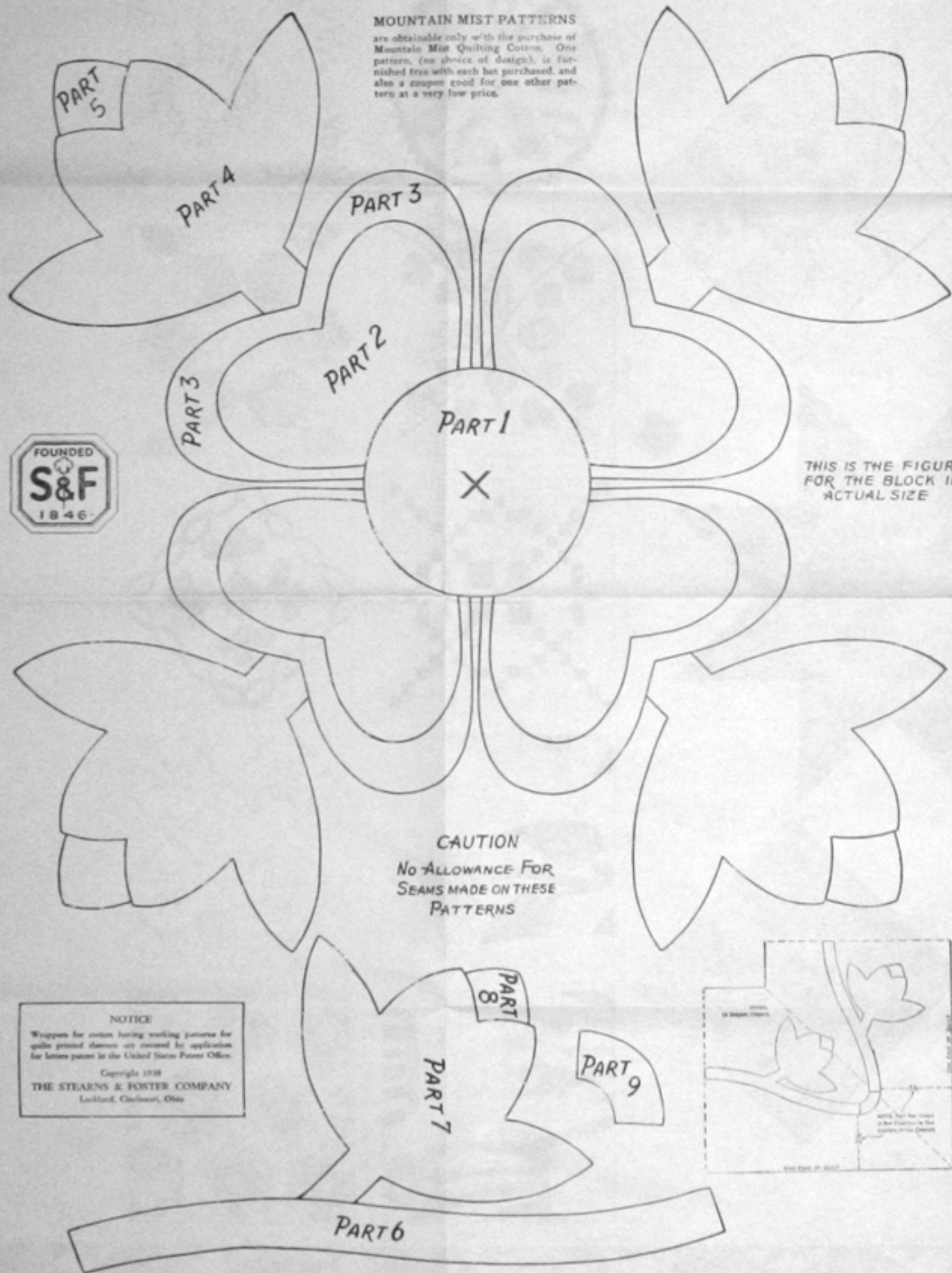


104-COLUMBINE

7-26-48 Mrs. Fane © 1934

**MOUNTAIN MIST PATTERNS**

are obtainable only with the purchase of Mountain Mist Quilting Cotton. One pattern, (no choice of design), is furnished free with each lot purchased, and also a coupon good for one other pattern at a very low price.



THIS IS THE FIGURE FOR THE BLOCK IN ACTUAL SIZE

**CAUTION**  
No ALLOWANCE FOR SEAMS MADE ON THESE PATTERNS

**NOTICE**  
Wrappers for cotton having working patterns for quilts printed thereon are covered by application for letters patent in the United States Patent Office.  
Copyright 1938  
**THE STEARNS & FOSTER COMPANY**  
Lackland, Cincinnati, Ohio



**THE OHIO ROSE**

Pattern No. 20 of the Mountain Mist Series of Quilt Patterns

**An Applique Quilt**

One of the popular family of Rose patterns, The Ohio Rose includes an unusual border design that doubles the charm of the quilt. Two shades of pink and a medium green, if used in the arrangement suggested on the Yardage Chart, give a very pleasing and delicate effect. The border is 9 3/4" wide; there are twelve 17 1/2" blocks to be applique for the top. To the left is shown the actual size figure for the block. Below this are the actual size parts that make up the border, and a one-fourth size detail showing how to make the border corners. A diagram of the completed quilt is also shown.

**GENERAL INSTRUCTIONS**

1. First make cardboard patterns for all the parts. Through this paper trace outlines of these parts; paste the outlines onto cardboard (the dress box kind is suitable) and cut out along the penciled lines. Mark each part so made with its number, as shown on the original pattern.
2. If there is any doubt about the fastness of the color, or if there is a possibility of shrinkage, first wash and iron the cloth. Then with a soft lead pencil, outline the required number of parts on each color of cloth, "dove-tailing" the parts together to save cloth. Be careful to space the outlines far enough apart to allow for 1/4" seams when the parts are cut out. **DO NOT CUT ALONG THESE LINES.**
3. Now cut out the parts, making the seam allowance. The penciled lines remain to show where to turn the seam under. Next cut the twelve background blocks from the white goods. These blocks should be cut 18" square to allow for seams; this will require three yards of the goods. From the white goods also rear strips for the border, which is to finish 9 3/4" wide. For greatest economy of cloth, make the border from eight pieced strips: four strips measuring 4 1/4" x 10 1/4" (making up the two lengthwise borders), and four strips measuring 3 1/2" x 10 1/4" (making the two shorter lengths). Thus each border strip will be pieced in the center. If you prefer not to piece the border strips, provide additional white goods.
4. Before appliqueing the parts on the blocks, locate their proper positions in this manner: Fold each white block and crease to locate the center; lightly pencil diagonal lines through the center from one corner of the block to the other. Now place the full size outline figure over each of the blocks so that the center "X" falls on the center of the block, and so that parts 2, 3, 4 and 5 are exactly intersected by the diagonal lines drawn on the cloth. Outline the figure and mark with dots through the paper to show the positions for the parts.
5. Baste the parts onto the blocks and applique with thread of the same color as the cloth being sewed. When all twelve blocks have been appliqueed, set them together.
6. Before appliqueing the border, we suggest that a line be drawn from one end to the other along the middle of each border strip (not necessarily in the exact center, but wherever you want the "mean" of the vine to be). This will help keep the border applique going straight, as you can place the curves to extend the same distance below and above the line each time. Since half of parts 6, 7, and 8 have been cut with the pattern reversed, the border applique should go on smoothly. Fit the corners carefully, as shown in the diagram. When the border is completed, sew it to the quilt top and press the finished top.
7. The final step is the actual quilting, which includes marking the quilting design (see Suggestion for Quilting); fixing the quilt back to the quilting frame; spreading the Mountain Mist Quilting Cotton on the quilt lining; laying on the quilt top and tacking together the three layers (top, Mountain Mist, and lining); stitching the design, and finally, binding the edges of the quilt. We suggest binding this quilt with a narrow strip of the same green used in appliqueing the top.

**YARDAGE AND COLOR CHART**

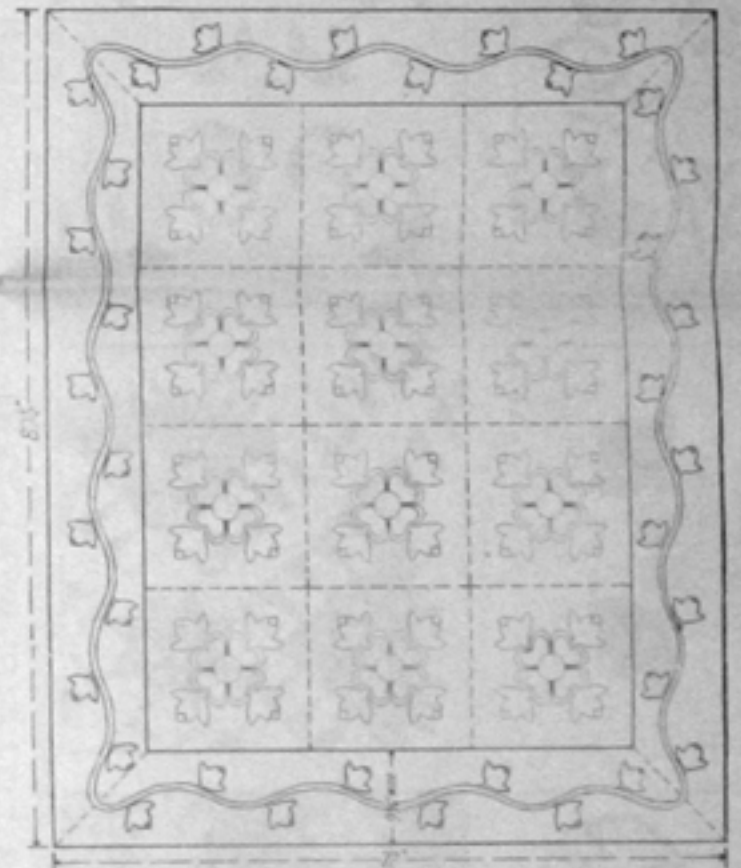
Parts	for quilt 72 x 89 1/2" No. of Pieces	Yardage
Part 1	12	1 yd. light pink (Cameo)
Part 3	48	
Part 2	48	1 yd. deep pink (Coralbell)
Part 4	48	
Part 5	48	2 yds. medium green (Sea Green)
Part 6	36	
Part 7	36	
Part 8	4	6 1/2 yds. white
Part 9	4	
Background Blocks	12	
Border Strips	8	

(Calculated for material one yard wide)

\*Cut half of these parts with the pattern reversed. Provide enough additional material for the quilt back.

**A LARGE QUILT**—If you want to make a larger quilt, to be used as a spread, make eight additional quilt blocks, attaching four along the top and four down the side of the 72 x 89 1/2" quilt top. This will make a top that measures 89 1/2" x 107"; measure your bed to see that this suits. Cut sufficient parts to make up the additional blocks. Substitute the following yardage for that given on the Chart: Light Pink, 1 1/2 yds.; Deep Pink 1 1/4 yds.; Medium Green, 2 1/2 yds.; White, 9 yds.

DIAGRAM OF THE QUILT  
DIMENSIONS GIVEN ARE THE FINISHED DIMENSIONS



**SUGGESTIONS FOR QUILTING**

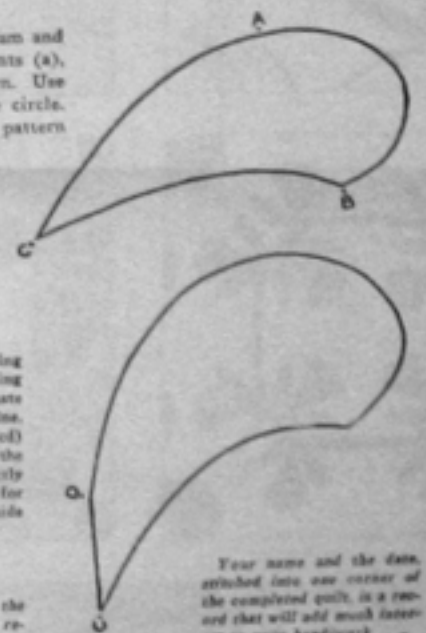
For quilting the Ohio Rose, we suggest the plan sketched in the small diagram below. The background is quilted in squares made from diagonal lines ruled across the quilt; the smaller and finer the squares, the better the appearance of the quilt. The block figures are outlined with quilting stitches, and in the spaces between the figures a single feather swirl is used. A curved feather is quilted along the appliqueed border, and the rest of the border is filled in with parallel lines. We do not provide perforated quilting patterns, but if you have no feather swirl pattern on hand, you can get the same effect by using the first diagram as directed below. Also, the border feather can be marked with the lower diagram.



**Single Swirl**—Cut out the diagram and paste onto cardboard, marking points (a), (b) and (c) on the cardboard pattern. Use this to outline each section of the circle. Outline with pencil, moving the pattern around the center (c) to make a complete circle of eleven sections. In outlining, draw one section and continue by placing point (c) on point (c), and point (a) on point (b) of each succeeding section.

**Border Feather**—Make the curving double feather for the border by cutting out the section shown in Diagram 2. Paste onto cardboard and outline along the vine. In outlining, place the center line (cd) along the vine stem each time and make the lines of each successive section exactly coincide. Shorten the feather section for corners; reverse pattern to make the inside part of the double feather.

Any pencil marks that remain after the quilting is completed, can easily be removed with an "Art Gum" eraser.



Your name and the date, attached into one corner of the completed quilt, is a record that will add much interest to your handwork.