



74 - FLORAL WREATH



4 - TUMBLING BLOCKS



24 - DANCING DAFFODILS



70 - STAR BRIGHT



39 - POINSETTIA



47 - WATER LILIES



26 - MARTHA'S VINEYARD



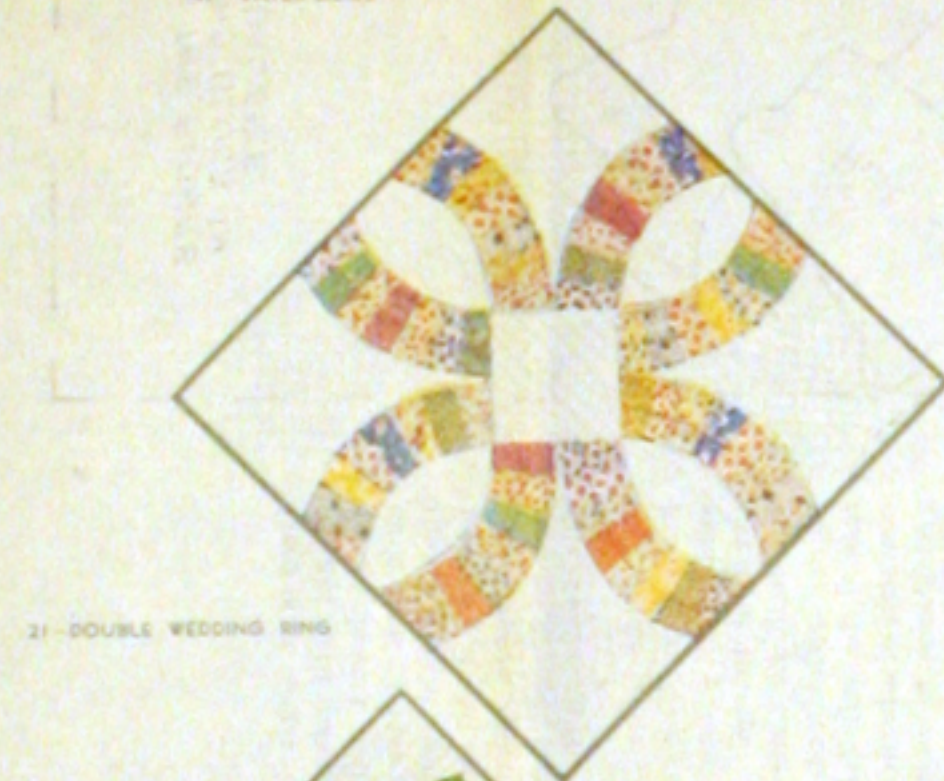
34 - HORSESHOE



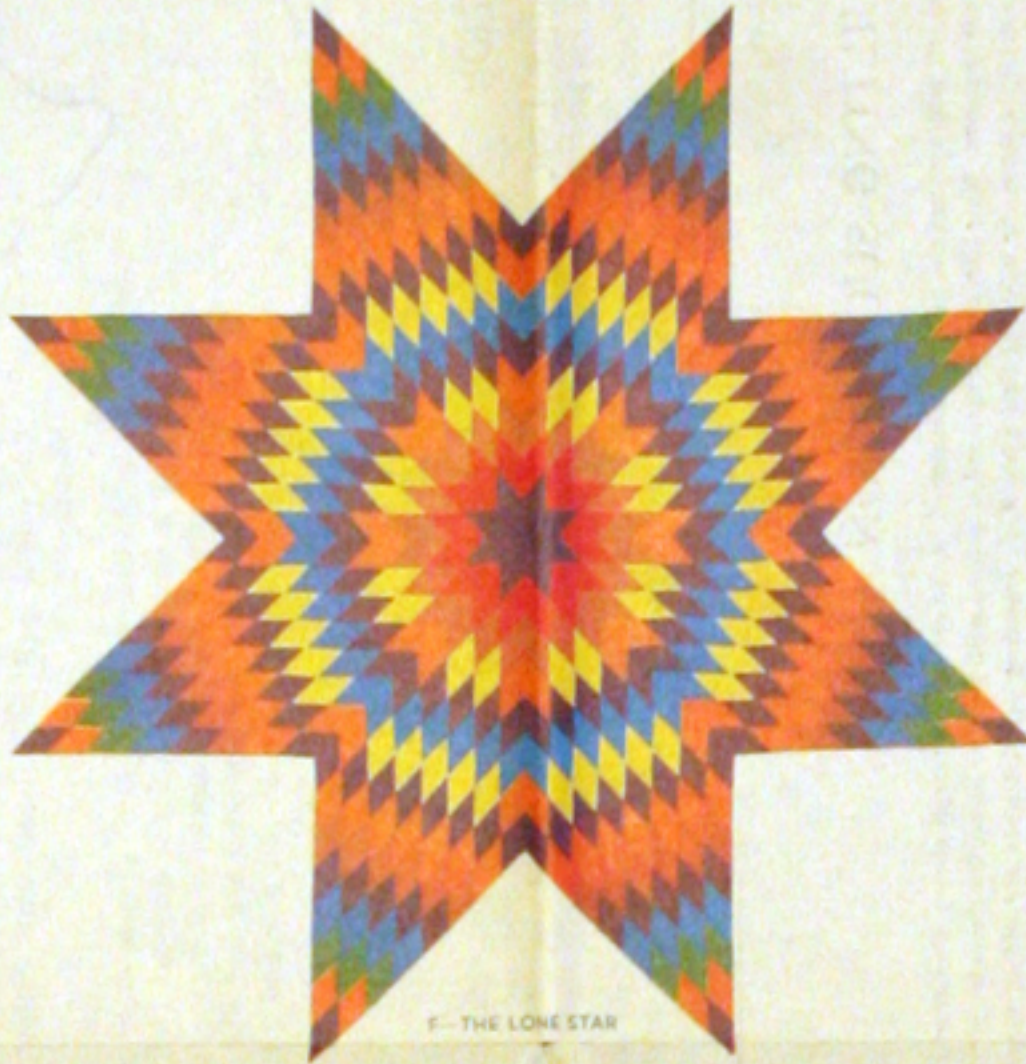
9 - SUNFLOWER



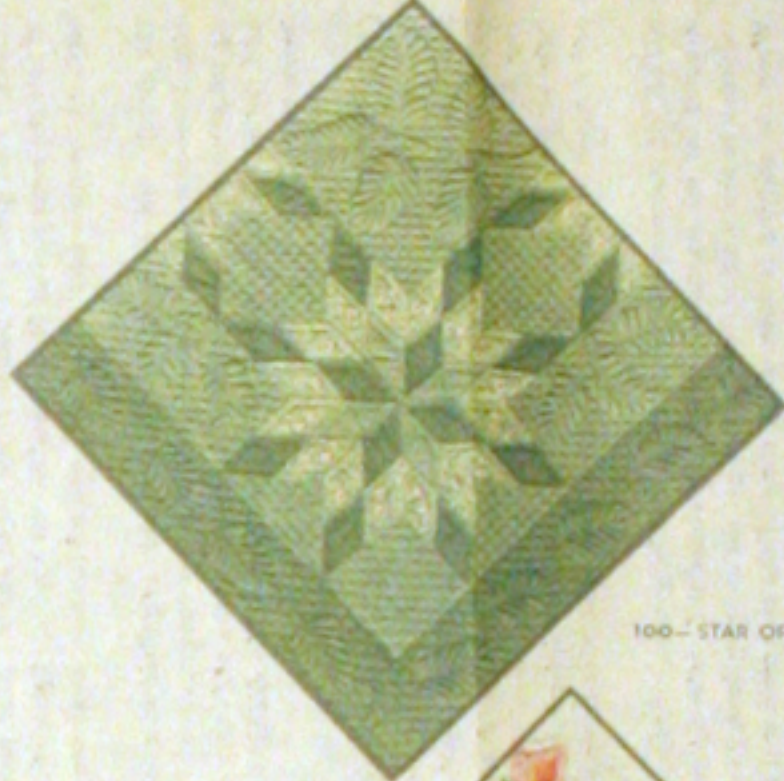
8 - IRIS



21 - DOUBLE WEDDING RING



5 - THE LONE STAR



100 - STAR OF BLUEGRASS



85 - APPLE BLOSSOMS



83 - COUNTRY GARDENS

Save THE QUILT PATTERN which is printed on reverse side of this wrapper. You may obtain the pattern for any quilt design illustrated by using the coupon which is printed in the lower right-hand corner of this wrapper.

1 lb. 3 oz.

#24 Savery, Suffolk ©1931

ONE SEAMLESS SHEET

FULL QUILT SIZE - 81 BY 96 INCHES

MOUNTAIN MIST

REG. U.S. PAT. OFF. AND IN CANADA

NEEDLE-EASY "GLAZENE" FILLING for QUILTS

Uniform in Thickness • Does Not Stretch Thin • Makes a Quilt That Will Wash Beautifully

THE STEARNS & FOSTER COMPANY
LOCKLAND, CINCINNATI, OHIO

Guaranteed by the Manufacturer
100% NEW S&F MATERIAL
OHIO REGISTRY No. 52

FORM 106
© 1954 S & F CO.
LITHO IN U.S.A.



23 - TURKEY TRACKS



3 - NEW YORK BEAUTY



39 - DOGWOOD



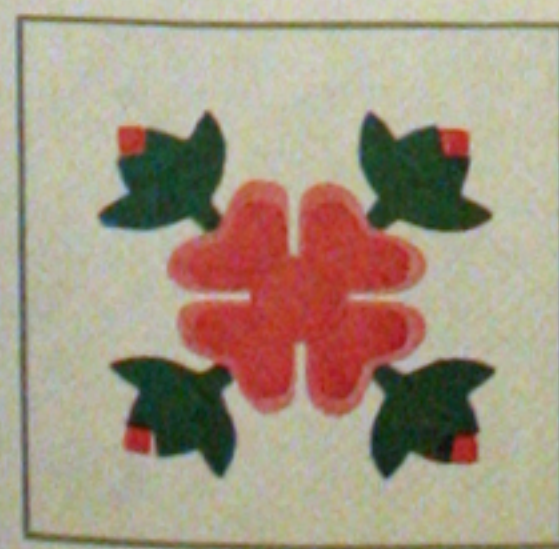
30 - BOSTON COMMONS



64 - COUNTRY LANES



83 - RING WREATH



20 - OHIO ROSE



73 - DRESDEN PLATE



76 - DAISY CHAIN

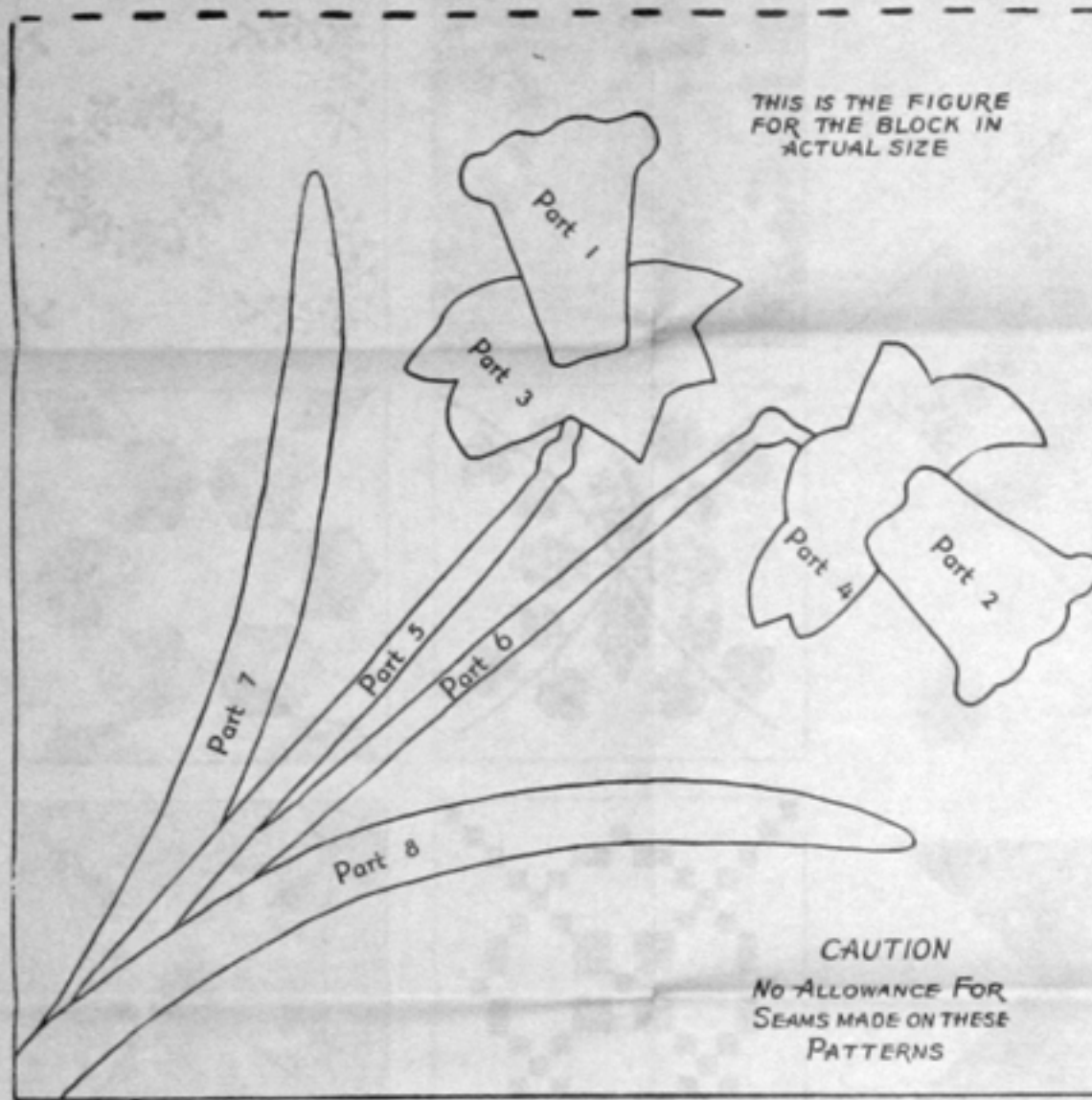


31 - POMEGRANATE

HOW TO ORDER PATTERNS

DANCING DAFFODILS

Pattern 24 of the Mountain Mist Series



Here is an original Mountain Mist pattern that will surely delight quilt makers, for it glorifies one of the loveliest of spring flowers, and one that so far has been missing from quilt tops. These sunny daffodils will tempt you to start the quilt right away, and with a little skill and patience, before long it will be done. Then you too will be reminded of Wordsworth's poem, "The Daffodils", which was the inspiration of this pattern; you will have "a host of golden daffodils" to cheer your room the year 'round.

The colors to be used are two shades of yellow and a soft gray-green. The cup of the flower is deep yellow, and the petals light yellow, as indicated on the Yardage Chart. Notice that the quilt diagram (right) shows twenty blocks. One-half the outer row of blocks, all around the quilt, is quilted with checks instead of the parallel lines used on the rest of the quilt (see quilting diagram); this gives the appearance of a border, without sacrificing any of the gold and green color to white border space. The actual border is a green strip one inch wide; when the quilting is completed this might well be finished with yellow or white bias binding.

The blocks are to finish 17½" square. Only one-fourth of the block is shown in the full size diagram (left); however, cut your white background blocks to finish the full 17½" square. All the corners of each block are just like the one shown, which gives the flower in full size and its position in the block corner.

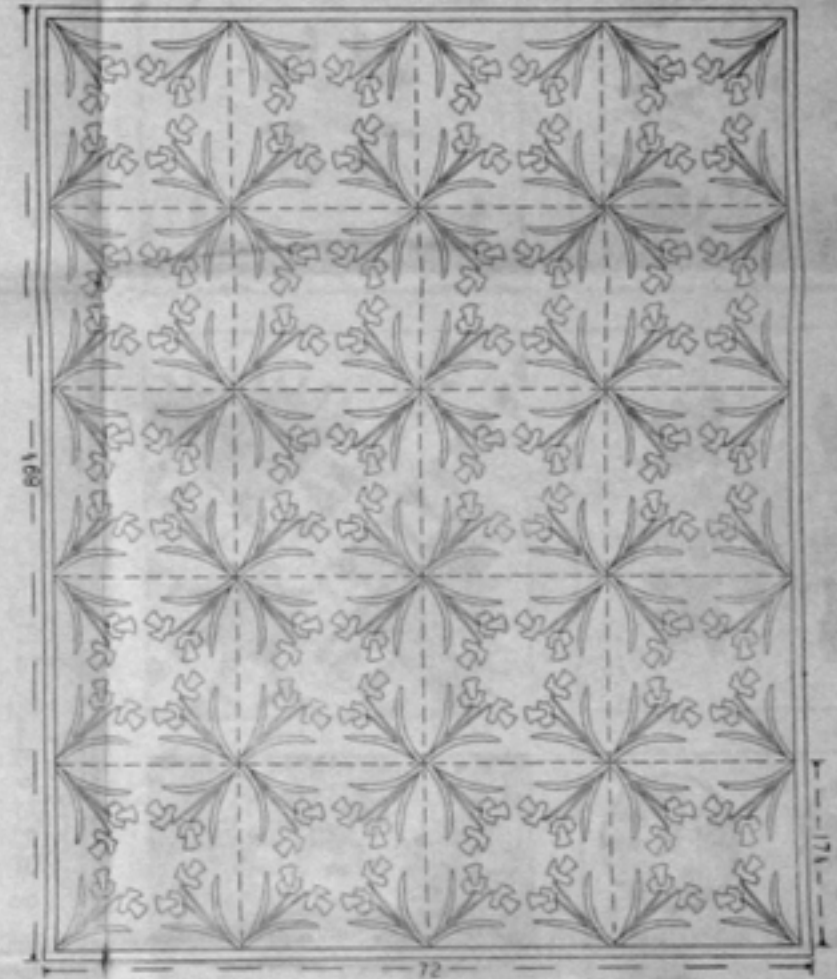
General Directions

1. First make cardboard patterns for each of the eight parts. To make these, trace the outlines thru thin paper and paste them onto cardboard; cut out along the penciled lines. Mark each part with its number.
2. If there is any doubt about the fastness of the color, or if there is a possibility of shrinkage, first wash and iron the cloth. (Note: If the

cloth for the top is washed, also shrink the material for the quilt back.) Take off the one-inch green border strips, piecing the longer one to save cloth; in other words, cut four strips measuring 45½ x 1½, and two strips 72½ x 1½. This provides for the border. Now you are ready to outline the required number of parts on each color of cloth. (See Yardage and Color Chart.) Be careful to space the outlines far enough apart to allow for ¼-inch seams. We suggest that the green stems (Parts 5 and 6) be cut on the bias, twice as wide as the stem is to finish; to applique these stems, turn the edges under until they meet.

3. Next, cut out the parts, making the seam allowance. The penciled lines remain to show exactly where to turn the seams under. Also cut the twenty white background blocks. Cut these 18" square, to allow for seams; this requires five yards of white cloth.
4. Locate the position of the daffodil on the block as follows: Fold the block in half once each way, lightly pressing the crease. This divides your block into four parts and locates the center. Now place one corner of the block over the outline pattern, with the center of the block exactly on the point where the dotted lines of the pattern meet, and with the creases in the goods falling exactly along the two dotted lines. The edges of the outline pattern will fall ¼-inch inside the edges of the block, but parallel to them; this allows for the seams when the blocks are set together. The outline will show thru the cloth. Trace the figure lightly with a soft pencil. Do this on each corner of all twenty blocks.
5. Now baste the parts into position. Note that Parts 6 and 7 both go under Part 5, and that Part 5, in turn, fits under Part 8. Also, Part 2 fits under Part 4, and Part 1 under Part 3. Baste in this order, and applique with thread of the same color as the cloth being sewed. Eight daffodil heads, two from each corner, will form an irregular ring in the center of each finished block.
6. When all twenty blocks have been appliqued, set them together as shown by the dotted lines in the diagram of the finished quilt. Add the one-inch green border.
7. Now comes the quilting, which is the final step. First press the top. The quilting process includes fixing the quilt back to the quilting frame, spreading on the Mountain Mist Quilting Cotton, laying on the quilt top, stretching and fastening the entire quilt, marking and stitching the quilting design (see Quilting Suggestion), and binding the edges.

DIAGRAM OF THE QUILT
DIMENSIONS GIVEN ARE THE FINISHED DIMENSIONS



YARDAGE AND COLOR CHART

Part	Pieces	No. of Yards
Part 1	80	1 yd. deep yellow (Oak)
Part 2	80	
Part 3	80	1½ yds. light yellow (Canary)
Part 4	80	
Part 5	80	½ yd. dark green (Moss)
Part 6	80	
Part 7	80	2¼ yds. medium green (Pacific)
Part 8	80	
Border		
Background Blocks		5 yds. White

Calculated for material 38" wide.

Provide additional material for quilt back and for binding the edges of the quilt.

FOR A LARGER QUILT, measuring 78½ x 96", attach two borders in addition to the narrow Pacific green one. First comes the 1" Pacific border, next a 2" white border, and last a 1½" border of dark green. These are the finished, not the cutting, widths. Piece these new border strips, as well as the long Pacific strips, to save cloth. Yardage Required: Same as for smaller quilt, except provide 1½ yds. Moss, and 5¼ yds. White instead of yardage shown on chart. Provide additional material for back and binding.

NEW COLOR PLAN—Green Background

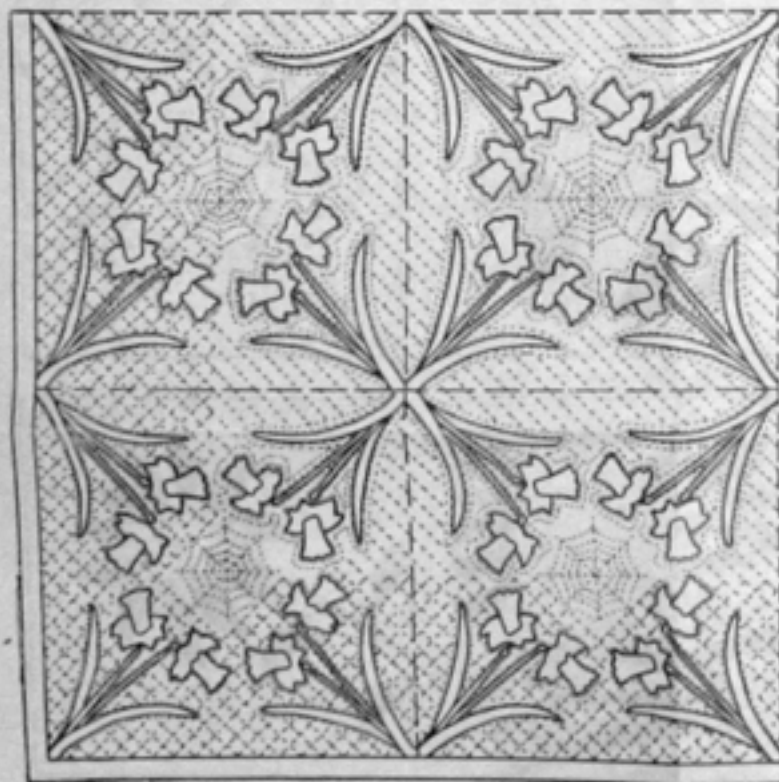
A second color plan has been originated for this quilt and has worked out very successfully. It calls for a pale Nile Green background, yellow flower cups, and eggshell petals. The effect is very delicate and enhances the graceful shape of the flowers.

The yardage requirements figured for this new color plan include the additional borders that increase the size of the quilt to standard double bed size—in this case, approximately 78½ x 96". The three borders, beginning with the narrow inner border, are first, dark green, second, Nile Green, and last, eggshell. Bind with the dark green. Binding and quilt backing are included:

Parts 1 and 2, 80 pieces of each	1 yd. Oak	Parts 7 and 8, 80 pieces of each	2.2 yds. Med. Green
Parts 3 and 4, 80 pieces of each	2 yds. Eggshell	Background Blocks	3 yds.
two strips to finish 1½ x 78½		1.2 yds. Nile Green	Middle border*
two strips to finish 1½ x 93½	two strips to finish 1 x 72		two strips to finish 1 x 87½
Parts 5 and 6, 80 pieces of each	1.2 yds. Dk. Green	two strips to finish 1 x 76	Quilt backing
First border*			
two strips to finish 1 x 72			
two strips to finish 1 x 87½			
Binding			

*Place all border strips in the center

Diagram Showing Quilting Design



QUILTING SUGGESTION

To the left is illustrated the quilting mentioned in the second paragraph above. One corner of the quilt is shown. Note that the background is quilted with parallel lines. On the outer portion of the quilt, to about the depth of half a block, intersecting parallel lines are added, forming checks. This gives the border effect noted above. Also, make this further distinction to set off half the outer row of blocks: outline the applique figure with the quilting stitches only once here; on the main part of the quilt outline it twice, as shown on the diagram.

The circular space between the flower heads is quilted in a cobweb pattern as illustrated. The narrow one-inch border may be quilted with a continuation of the checks, or with lines following the seam, whichever is preferred. All in all, this is a fairly simple but effective quilting plan. And the quilt can be marked with pencil and ruler, except for the cobweb pattern, which is shown right.

COBWEB QUILTING PATTERN—We suggest that this cobweb pattern be perforated, as this is simpler than making a stencil. To perforate, stitch carefully along the dotted lines with an unthreaded sewing machine, set to a medium long stitch. Transfer to the quilt with colored stamping powder, which is obtainable at art goods and fancy-work counters. Just dip a pad of cloth into the powder and lightly dust over the perforated pattern, which must be placed smooth side up. Be sure to leave several inches of paper margin around the perforations of your pattern, as this keeps the powder from getting onto the rest of the quilt.

NOTE. If stamping powder is not available, ground cinnamon will do just as well. Use as instructed for the stamping powder. If either the stamping powder or the cinnamon show a tendency to brush off before you can get the quilting done, go over the design with a soft pencil. When the quilting is done, every trace of the cinnamon will brush off.

Make pencil marks lightly so that they can be removed with an Art Gum eraser when the quilting is completed.

NOTICE

Wrappers for cotton having working patterns for quilts printed thereon are covered by application for letters patent in the United States Patent Office.

Copyright 1931.

THE STEARNS & FOSTER COMPANY
Lakeland, Cincinnati, Ohio

