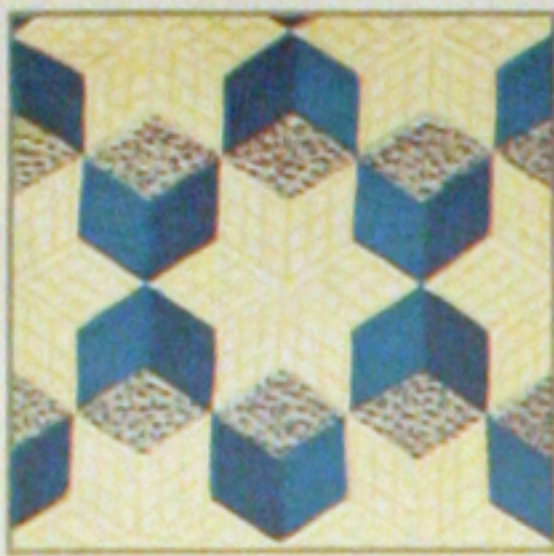




36-FLORAL WREATH



A-TUMBLING BLOCKS



101-BOY DROP



70-STAR BRIGHT



25-GRANDMOTHER'S FLOWER GARDEN



119-DADDY ME



28-MARTHA'S VINEYARD



34-MORESUN



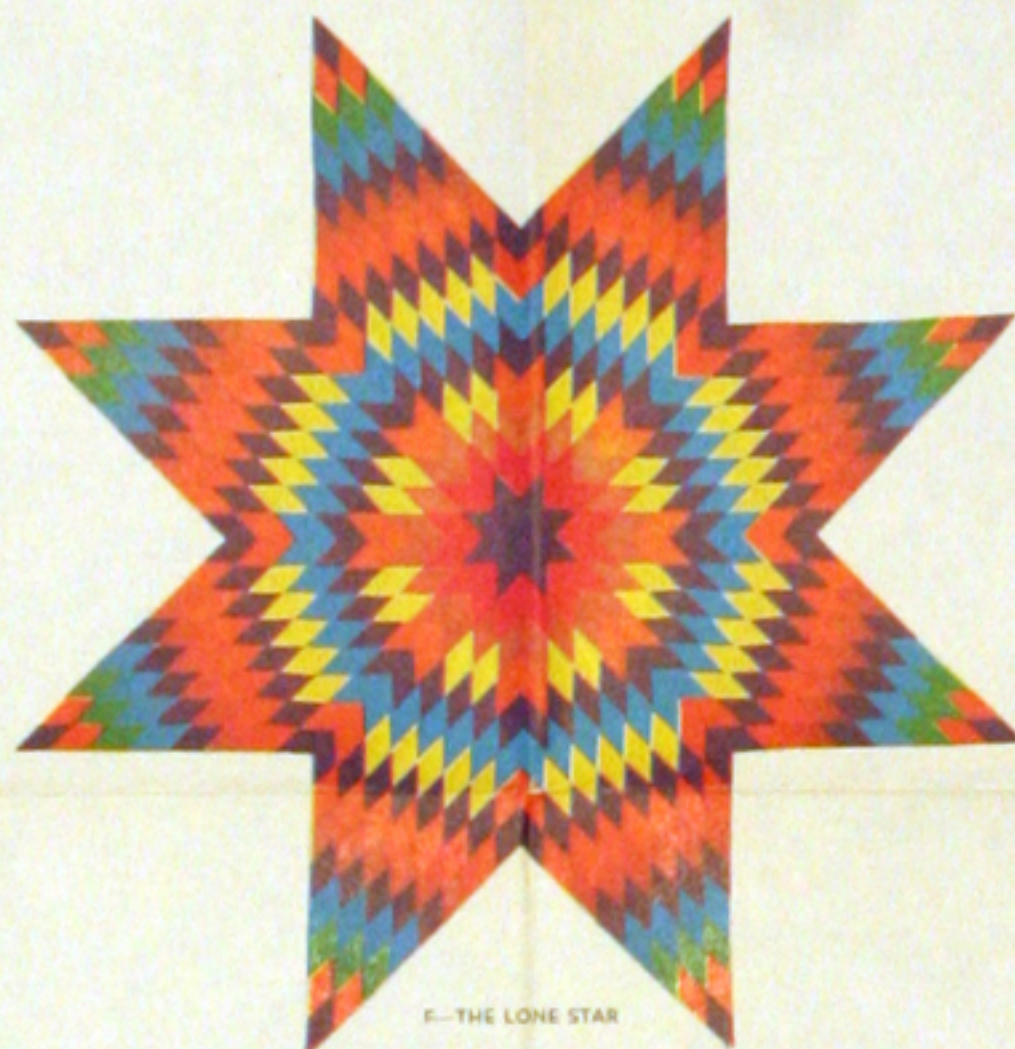
P-SUNFLOWER



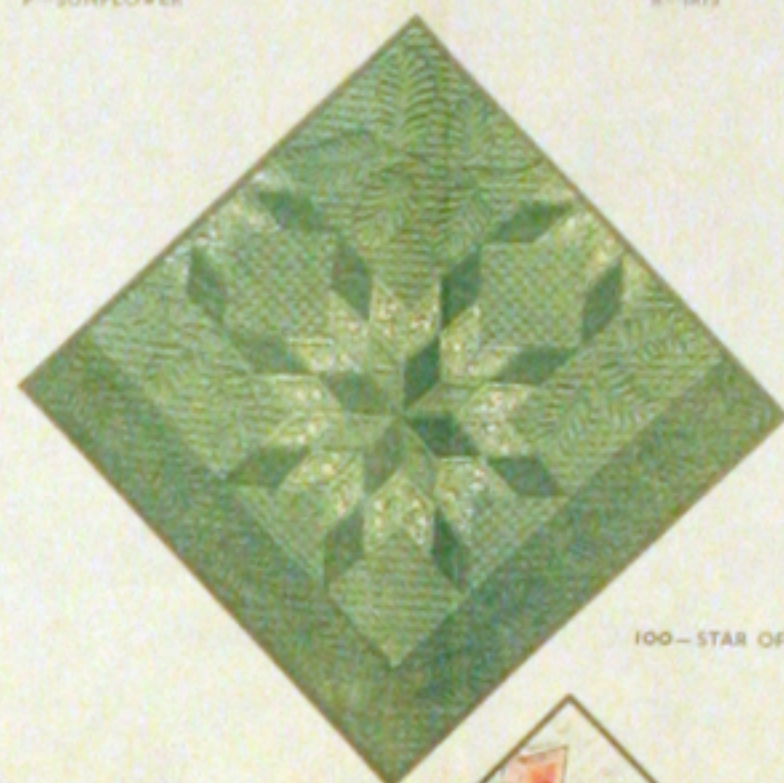
8-IRIS



21-DOUBLE WEDDING RING



E-THE LONE STAR



100-STAR OF BLUEGRASS



80-APPLE BLOSSOMS



83-COUNTRY GARDENS

SAVE THIS WRAPPER
THERE IS A VALUABLE QUILT PATTERN
ON THE REVERSE SIDE.
NOTE - Patterns for quilts shown on this
wrapper and in our catalog may be ordered at
a saving with the coupon which is printed below.

1 lb. 5 oz.

ONE SEAMLESS SHEET

EXTRA LARGE SIZE - 81 BY 108 INCHES

MOUNTAIN MIST

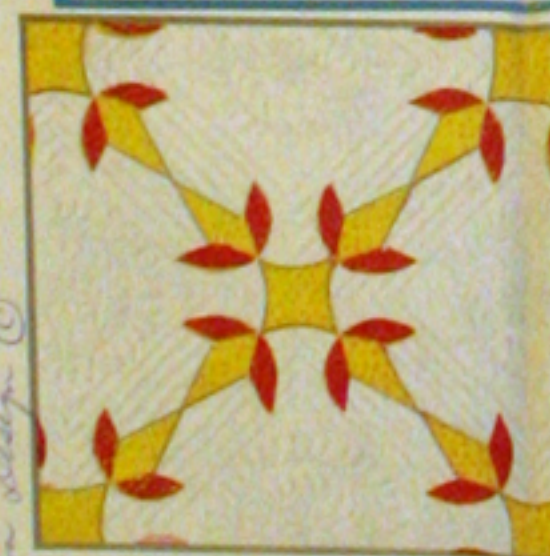
REG. U.S. PAT. OFF. AND IN CANADA

NEEDLE-EASY "GLAZENE"™ ALL COTTON FILLING

Uniform in Thickness • Does Not Stretch Thin • Makes a Quilt That Will Wash Beautifully

THE STEARNS & FOSTER COMPANY CINCINNATI OHIO 45215

ALL COTTON
100% NEW MATERIAL
OHIO REGISTRY No. 52



23-TURKEY TRACKS



X-NEW YORK BEAUTY



79-GODWOOD



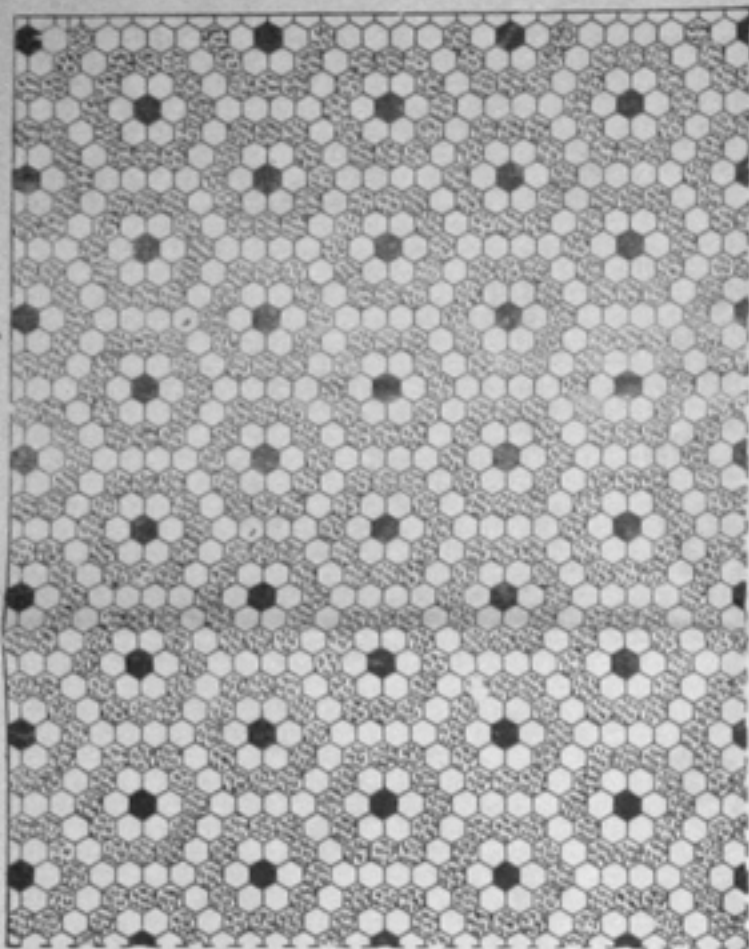
30-BOSTON COMMONS



64-COUNTRY LANES



Pat. S. Stearns & Foster Co.



One-fourth of Flower Garden quilt, showing how to set together. The finished quilt measures 71½x90".

MOUNTAIN MIST PATTERNS

are obtainable only with the purchase of Mountain Mist Quilting Cotton. In addition to the pattern printed on the inside of the wrapper of each roll you buy, there is a coupon, which, with 20c, is good for one additional pattern. Patterns cannot be exchanged.

Flower Garden, Mosaic, Honeycomb . . . these are but three of the beautiful quilts that can be made from the small six-sided (hexagon) figure shown at the right. Which of them will be yours? The difference in design depends on the arrangement of the printed and plain pieces, and if you are unable to decide which is most attractive, get out the scrap bag, visit your store, and make all of them; or work out your own design, as did your ingenious grandmothers who originated the three quilts shown here. And though this hexagon is a trifle larger than the one used in the early days of patchwork, the modern quilt maker may yet consider it too small; in which case the pattern can be cut a bit larger.

Before you start, be sure that all the prints and plain colors to be used are absolutely color fast. Also, measure your bed and decide on the exact size for the quilt; then make more blocks if you want it larger than shown here. The yardage for each quilt is given below; to this add sufficient material for the quilt back or lining.

Quilting. In quilting either of these three quilts, follow along just inside the seams with fine, even stitches, sewing through the three thickness of quilt top, Mountain Mist

HEXAGON PATTERN for Pieced Quilts

Number 25 of the Mountain Mist Series

Quilting Cotton, and quilt lining. Fancy quilting, with curves and circles, is out of place here, since the piecing and the arrangement of colors is the dominant note; the best way to emphasize it is with simple quilting that follows the design.

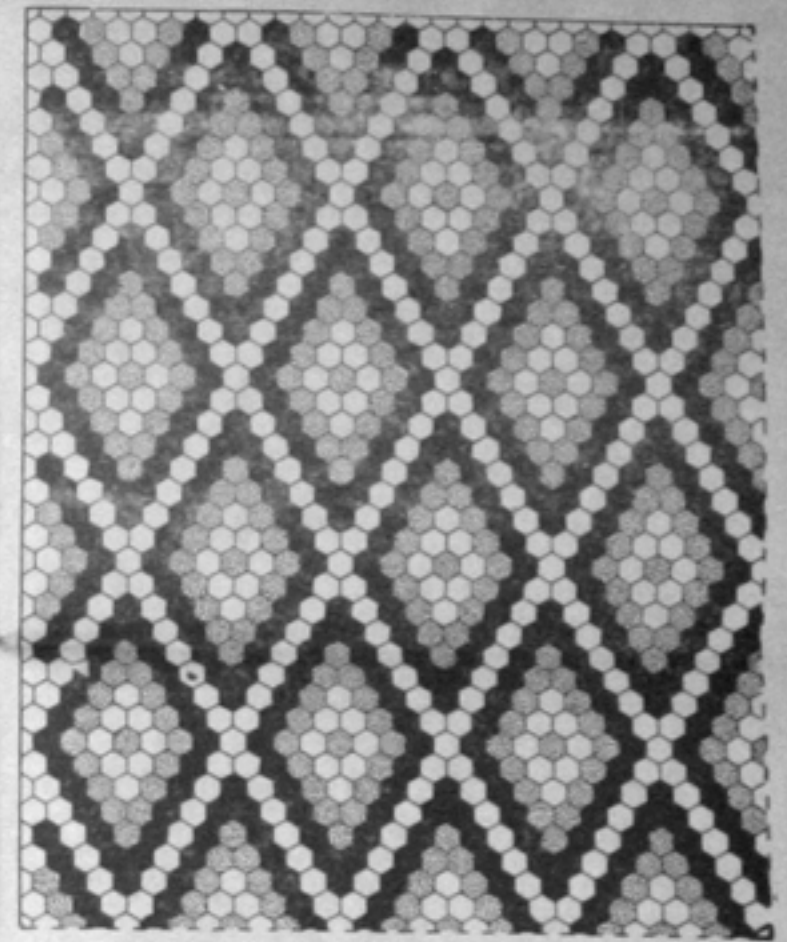
Actual Size Pattern. Paste this figure onto cardboard and cut out exactly on the lines. Use this to mark off the pieces on the cloth. In marking, fit the pieces together, instead of outlining one directly below the other; this saves cloth. Mark on the wrong side with a soft, sharp pencil and space the outlines far enough apart to allow for seams when the pieces are cut out. (Allow about ¼-inch or less on all sides for seams.) Do not cut along these lines; cut the seam's width outside the lines. Join the pieces with a running stitch along the pencilled lines; this will make for accuracy, resulting in a smooth, even quilt.



NOTICE

Wrappers for cotton having working patterns for quilts printed thereon are covered by application for letters patent in the United States Patent Office.

Copyright 1931
THE STEARNS & FOSTER COMPANY
Lockland, Cincinnati, Ohio



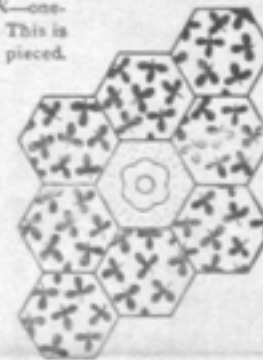
One-fourth of Honeycomb quilt. Finished quilt measures 71½x90".

MOSAIC

Pieces to Cut	Yardage
240 center pieces	1 yd. Print or Solid Color
1920 prints	6 yds. Print, or ½ yd. each of about twenty-four Prints.
2093 whole pieces, white	7 yds. White
62 half pieces, white (top and bottom)	
138 part pieces, white (sides)	

Calculated for material 36" wide

Single Block—one-half actual size. This is the unit to be pieced.



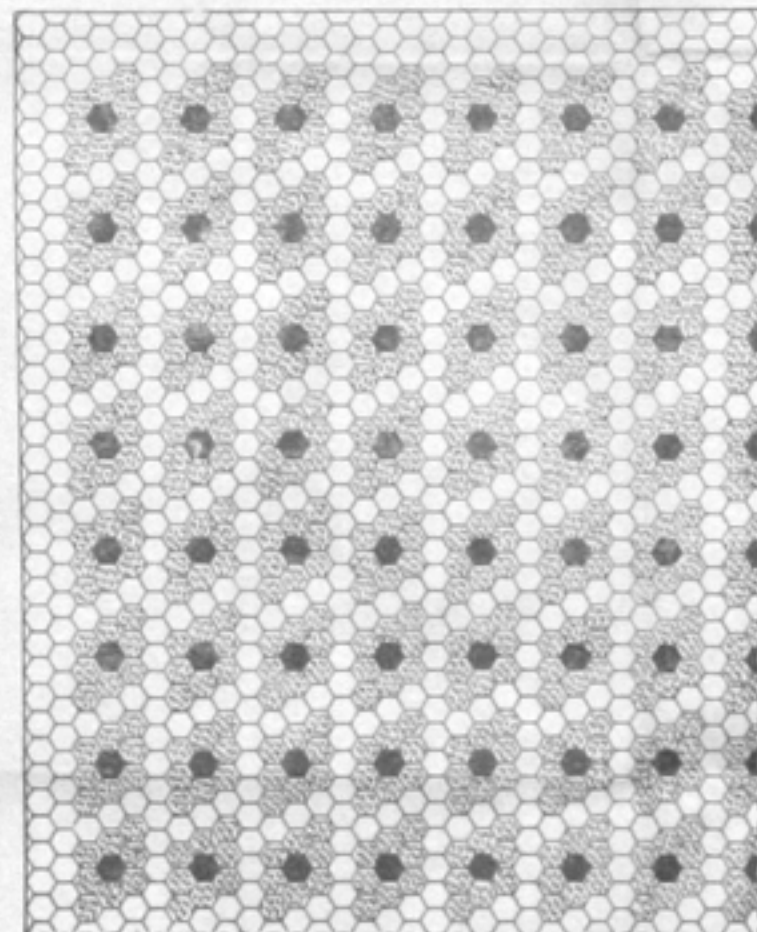
The 72x89¼" quilt requires 240 of these blocks, set together with white hexagons.

Mark off the required number of parts on the cloth. Use either a solid color, or a distinctive print for the center hexagon, following with an entirely different print for the outer row. Since variety is the keynote of this quaint old pattern, make each block different by using various prints and by cutting the hexagons for each block a little differently on the goods. However, the same print can be used throughout with very neat effect, if this is preferred.

Press the completed blocks, arrange harmoniously as to colors, and set them together with a single row of white hexagons as shown on the diagram to the left.

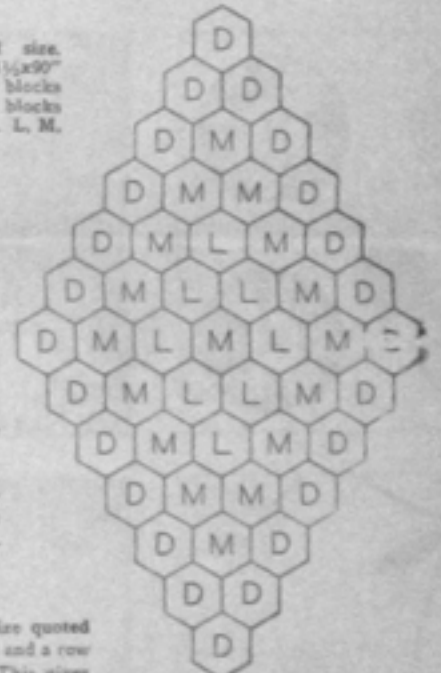
When all the blocks are joined, finish the quilt to the size quoted above by adding several rows (see diagram) of white hexagons all around. A plain border could be attached instead, if desired. Press the top lightly. The simple quilting described above comes next. Bind the edges with one of the predominating colors used in the top.

Left — One-fourth of Mosaic quilt. Finished quilt measures 72x89¼".



HONEYCOMB

Single Block—one-third actual size. This is the unit to be pieced. The 71½x90" quilt requires 58 whole blocks, 14 part blocks (across top and bottom), and 19 part blocks (along the sides); note diagram above. L, M, and D stand for Light, Medium, and Dark shades. The Dark does not mean a really dark color, but simply one deeper than the others, since the entire effect is of pastel shades. (Of course, printed goods, in light, medium, and deeper tones could be used if preferred.)



Mark off the required number of parts on the three shades of cloth. The medium shade is used for the center of each unit; next comes a row of the light tint (8 pieces), then the medium (16 pieces), and finally the dark (24 pieces).

When the blocks are pieced, press lightly, and set together with hexagons cut from the light goods. A single row joins the blocks, as shown on the diagram above.

When all the blocks are joined, finish the top to the size quoted by adding a row of light half-hexagons at top and bottom, and a row and a half of light hexagons at the sides; see diagram. This gives a neat finish, and the light edge may well be bound with the deeper shade when the quilting is completed. If you prefer, attach a narrow border strip in place of the light hexagons, using the medium or the dark shade. Press and quilt.

Pieces to Cut	Yardage
1615 whole pieces	5½ yds. Light
110 half pieces (top and bottom)	
78 half pieces (sides)	
4 quarter pieces (corners)	5½ yds. Medium
1134	
1636	5 yds. Dark

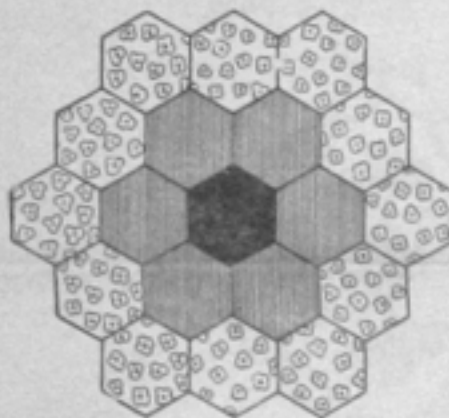
Calculated for material 36" wide



FLOWER GARDEN

Single Block—one-half actual size. This is the unit to be pieced. The 71½x90" quilt requires 138 whole blocks, 10 part blocks (across top and bottom), 24 part blocks (for the sides), and 4 part blocks (corners); note the diagram above. These are set together with white hexagons.

Mark off the required number of pieces on the white, plain, and printed cloth. The center hexagon of each unit throughout the quilt is made of solid color, yellow being a good choice; the yellow represents the center of each flower or bouquet. The first row, directly around the yellow center, takes six hexagons of solid color in a medium shade. The next row requires twelve printed hexagons. Here is a typical arrangement: yellow center, plain blue row, blue and yellow print. Of course, make each block different



from the next, as far as possible; but strive for harmony within each block by repeating, in the print, either or both of the solid colors.

When the blocks are pieced, press them, and set together with a single row of white hexagons as shown in the quilt diagram above. Do not attach a row of white completely around each block and then set together; rather, make a single white row between the blocks as you join them.

With all the blocks joined, add the row of white half-pieces at the top (see diagram) and bottom of the quilt. Or, if you prefer, attach a narrow border all around, being careful to keep the quilt the same size as planned. Press lightly and proceed to the quilting, which is described above. Bind the edges with one of the deeper colors used in the piecing.

Pieces to Cut	Yardage
176 solid color (center)	½ yd. Yellow
1910 prints	6 yds. Print, or ¼ yd. each of about twenty-eight Prints.
948 whole pieces, plain	3¼ yds. Solid Color, or ½ yd. each of about ten Solid Colors.
78 half pieces, plain	
1272 whole pieces, white	4¼ yds. White
108 half pieces, white	
4 quarter pieces, white (corners)	

Calculated for material 36" wide

FOR LARGER QUILTS

FLOWER GARDEN

For a larger quilt, measuring 79 x 96", complete all the blocks shown as incomplete on the small quilt. In other words, do not make half blocks or part blocks, but complete 176 blocks in all. The half blocks along the sides of the small quilt will be whole blocks on the large quilt, giving a scalloped edge; the top and bottom of the quilt will also be irregular edges. When all the blocks (or bouquets) have been set together, add a single row of white hexagons all around, completing the quilt top. Bind the edge in a rather dark shade, such as the medium blue. *Yardage Required:* 4½ yds. White; same color same as for small quilt. Provide additional material for back and binding.

MOSAIC

For a larger quilt, measuring 80½ x 94½", add an extra row on blocks to each side of the small quilt; add only one extra row of blocks across the top of the small quilt. This gives a total of 289 blocks in all, as compared with 240 for the small quilt. Finish the edges with white hexagons as shown for the small quilt. *Yardage Required:* 6½ yds. Print or ½ yd. each of about twenty-four Prints; same as for small quilt. Provide additional material for back and binding.

HONEYCOMB

For a larger quilt, measuring 77½ x 95", add the following borders to the quilt top shown in the diagram: first, a 2" border of the medium shade, and next a 1" border of the dark. These are to finish, not the cutting width. *Yardage Required:* Light, same as for small quilt; 4½ yds. Medium; 5½ yds. Dark instead of yardage shown on chart. Provide additional material for back and binding.

NOTE: These quilts can be enlarged to the above sizes, or others, by exact size required, by making the adjustment in the number of blocks. Exact measure the bed to be covered for size needed.