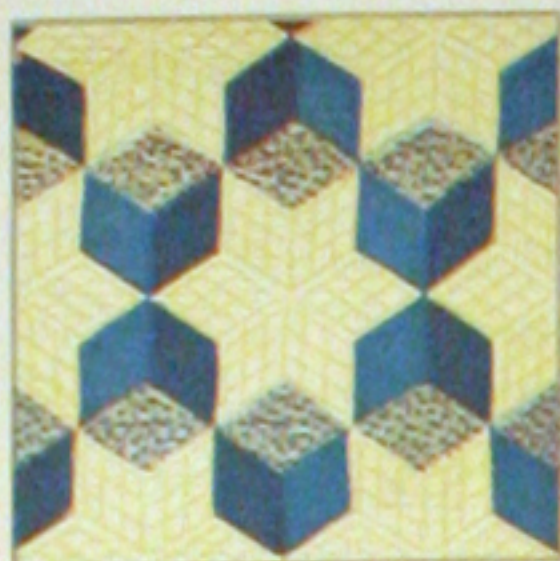




76—FLORAL WREATH



8—TUMBLING BLOCKS



103—DEW DROP



70—STAR BRIGHT



33—GRANDMOTHER'S FLOWER GARDEN



111—DADDY HEX



28—MARTHA'S VINEYARD



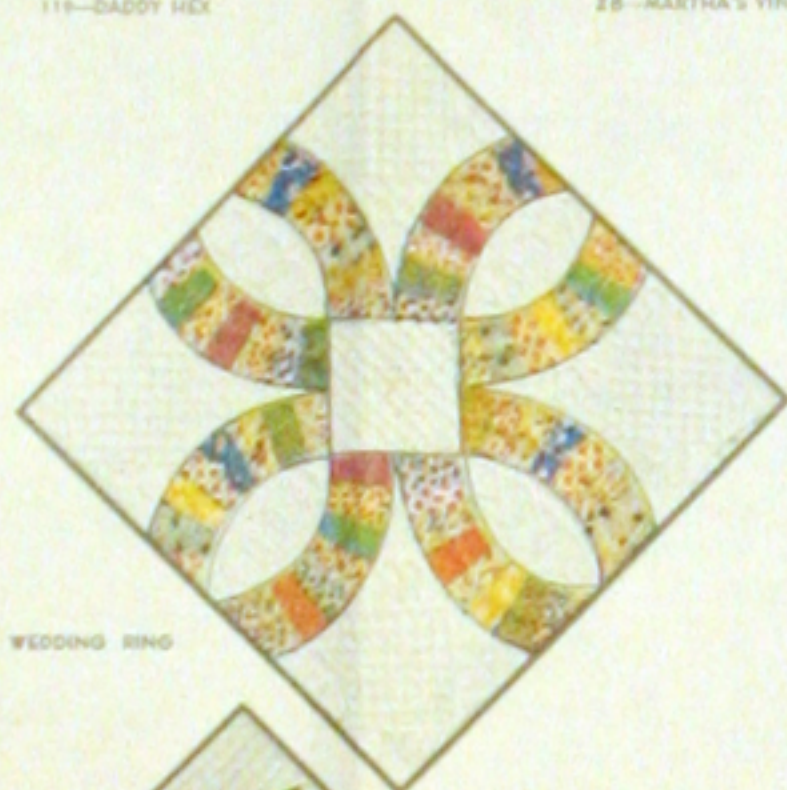
34—HOOPSPIN



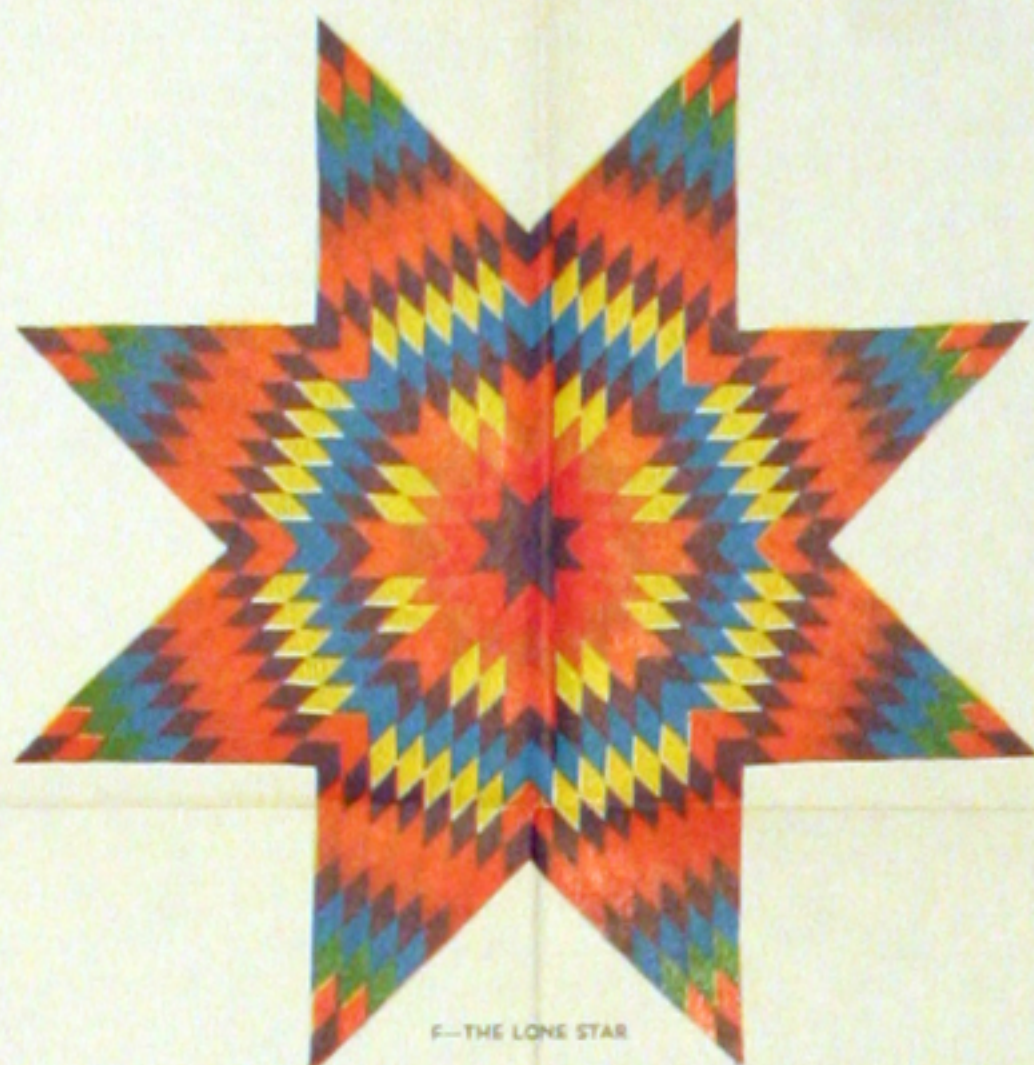
7—SUNFLOWER



6—IRIS



21—DOUBLE WEDDING RING



5—THE LONE STAR



100—STAR OF BLUEGRASS



80—APPLE BLOSSOMS



83—COUNTRY GARDENS

**SAVE THIS WRAPPER**  
THERE IS A VALUABLE QUILT PATTERN ON THE REVERSE SIDE.  
**NOTE** — Patterns for quilts shown on this wrapper and in our catalog may be ordered at a saving with the coupon which is printed below.

1 lb. 3 oz.

ONE SEAMLESS SHEET

**FULL QUILT SIZE - 81 BY 96 INCHES**

# MOUNTAIN MIST

REG. U.S. PAT. OFF. AND IN CANADA

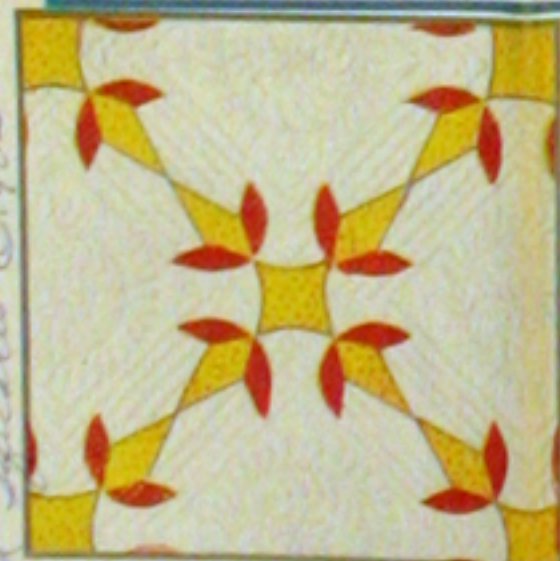
**NEEDLE-EASY "GLAZENE"™ ALL COTTON FILLING**

*Uniform in Thickness • Does Not Stretch Thin • Makes a Quilt That Will Wash Beautifully*

THE STEARNS & FOSTER COMPANY CINCINNATI OHIO 45215

ALL COTTON  
100% NEW MATERIAL  
Oeko Registry No. 52

Form 109  
1962 S & F CO.  
LITHO IN U. S. A.  
RN 13002



33—TURKEY TRACKS



8—NEW YORK BEAUTY



79—DOGWOOD



30—BOSTON COMMONS

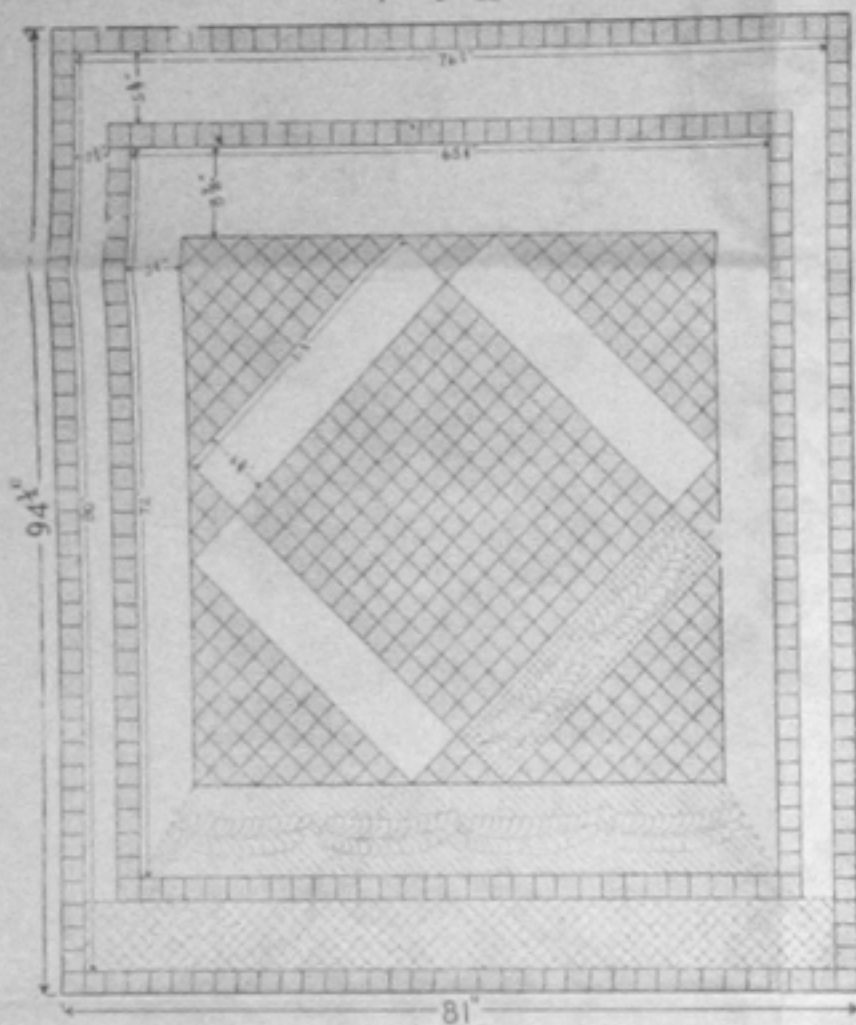


64—COUNTRY LANES



750 Valley Lane ©1932

Diagram of Cross Purposes quilt, giving finished dimensions and illustrating the quilting suggestion.



**Quilting Suggestion.** The dotted lines on the diagram of the finished quilt illustrate the quilting plan suggested. Quilt two curving feathers on each white strip in the center panel, filling in the background with small checks about 1/4-inch square. Also use the feather on the first white border, quilting four feathers across, and four on the long strips, filling in the background with parallel lines about 1/4-inch apart. Quilt the second white border with checks only; checks approximately 1 1/4" square are shown on the diagram.

Of course, quilt just inside all seams on the pieced squares and triangles; also run a straight line directly outlining each completed panel and border section.

This quilting can be marked with ruler and pencil (or ruler and needle, scratching the line with the needle to avoid making a mark on the quilt). The only pattern needed is for the feather, the diagram and instructions for which are given below.

**YARDAGE REQUIRED**  
Calculated for material 36" wide

634 squares..... 1 1/4 yds. each of twenty prints. (About 68 triangles..... 33 squares from each of twenty prints.)  
White strips..... 4 1/4 yds. White

Provide additional material for back and binding.

**For a Smaller Quilt,** suitable for a twin bed, and measuring 72x

82", use a smaller square (and half-square), measuring exactly two inches square. Cut the same number of squares and half squares, and join just as shown for the larger quilt. The borders and white strips will necessarily be of different size, as follows: four white strips for center panel, 28x6"; for first white border, two strips 58x7 1/4" and two strips 64x5 1/2"; for the second, or outer white border, two strips 68x5" and two strips 80x3". These are the finished measurements; in addition, allow for seams. **Yardage Required:** Prints same as for large quilt, but provide only 3 1/4 yds. White instead of the 4 1/4 yds. quoted for the large quilt. Provide additional material for back and binding.

**PIECED SQUARES**

**Pattern Number 30 of the Mountain Mist Series**

These two quilts, "Cross Purposes" and "Boston Common," are pieced from 2 1/2-inch squares of printed goods. Plain pastel colors could be used instead, but these designs are ideal for prints. Both are easy to make, yet so fresh and attractive as to command instant admiration in any comparison of quilts; neither can be surpassed for appearance and adaptability.

Diagrams of both completed quilts are shown. Note that the quilts are not made in "blocks" as is usually the case; the little squares are joined in strips, as explained below. The dotted lines in the plain white panels indicate the quilting. Just one strip

(four strips per border) of each white border panel is shown with the quilting filled in; quilt similar panels alike, as explained in "Quilting Suggestion." There is also a diagram from which a pattern for the feather quilting can be made; see instructions below. The square and the triangle, in actual sizes, are also given.

Before you start, be sure that all the prints to be used are absolutely color fast. Also, measure the bed to determine the size for the quilt. A large quilt or a smaller one can be made, as explained in the instructions. If the quilt top is washed before quilting, be sure to shrink the material for the back also.

**Actual Size Patterns**

These patterns are made in the exact finished size of the square and triangle; no allowance for seams. Trace these figures, or paste them directly onto cardboard and cut out exactly on the lines.

With a sharp pencil, outline the squares on the wrong side of the printed cloth; cut out sufficiently beyond the lines to allow for seams. In joining the pieces, the penciled lines on the wrong side show exactly where to make the seams; this method of marking and piecing insures accuracy. (If you prefer, pull threads for 2 1/2-inch squares, cut and then join pieces, taking absolutely even seams 1/4-inch deep.)



**CROSS PURPOSES**

To make this large 81x94 1/2" quilt, first mark off a sufficient number of squares and triangles (see Yardage Chart). The triangles are used to finish the center portion of the quilt, and we suggest that all of them be cut from prints of a pale tone, for contrast. Also cut the white strips. These are as follows: four strips 31 1/2"x6 1/2" for center panel; two strips 72x5 1/2", and two strips 65 1/2"x8 1/4" for the first white border (this allows for mitred corners); two strips 76 1/2"x3 1/2", and two strips 76 1/2"x6 1/2" for the second, or outer white border (corners not mitred). See diagram. Cut the longer strips first. These are the finished measurements; add enough to allow for seams.

Now join the squares in long strips of 14 squares each, for the central large square. Piece fourteen of these strips, then join them to form the large square. This central square should measure 31 1/2"x31 1/2"; in the finished top, it appears on the diagonal. To each side, attach one of the 31 1/2"x6 1/2" white strips. Piece the four little pyramids (3 squares and 3 triangles each) that fit in at the ends of the white strips; join to the white strips. Also piece and attach to the white strips the large corner triangles that complete the center panel. To piece these, join the printed squares in strips; that is, first a strip of 12 squares and a triangle at each end, then 10 squares and 2 triangles, etc. Make four of these triangular sections, as shown on the diagram of the quilt.

To this central panel add the first white border strips. The top then measures 65 1/2"x72". Next piece straight strips of squares for the first single square border. Make two strips of 32 squares each, and two of 21 squares each. Attach to the quilt top and add the last white border strips. Again piece single strips of the squares, two strips of 40 squares each, and two of 36 squares each. This is the final single-square border; attach to the quilt top, which is now completed.

In piecing the squares, avoid joining two pieces of the same print. Probably many different colors will be used; arrange them harmoniously. If you like, shade the colors, using prints with darker backgrounds in the center, getting lighter towards the edges; this requires a little study of the layout of the quilt.

Bind in a plain color that predominates in the prints used in the quilt top.

**BOSTON COMMON**

Mark off the required number of parts (see Yardage Chart). The squares are all of printed cloth (or of prints and light shades of solid colors, combined), and all the triangles are white. Also cut the white strips, as follows: two strips 29x8", and two strips 32x8" for the white border (mitred corners) directly around the center panel of prints; two strips 60 1/2"x6 1/2", and two strips 53 1/2"x6 1/2" for the second white border (mitred corners); two strips 80 1/2"x8", and two strips 80x2" for the outer white border (corners not mitred). These are the finished measurements; add enough to allow for seams.

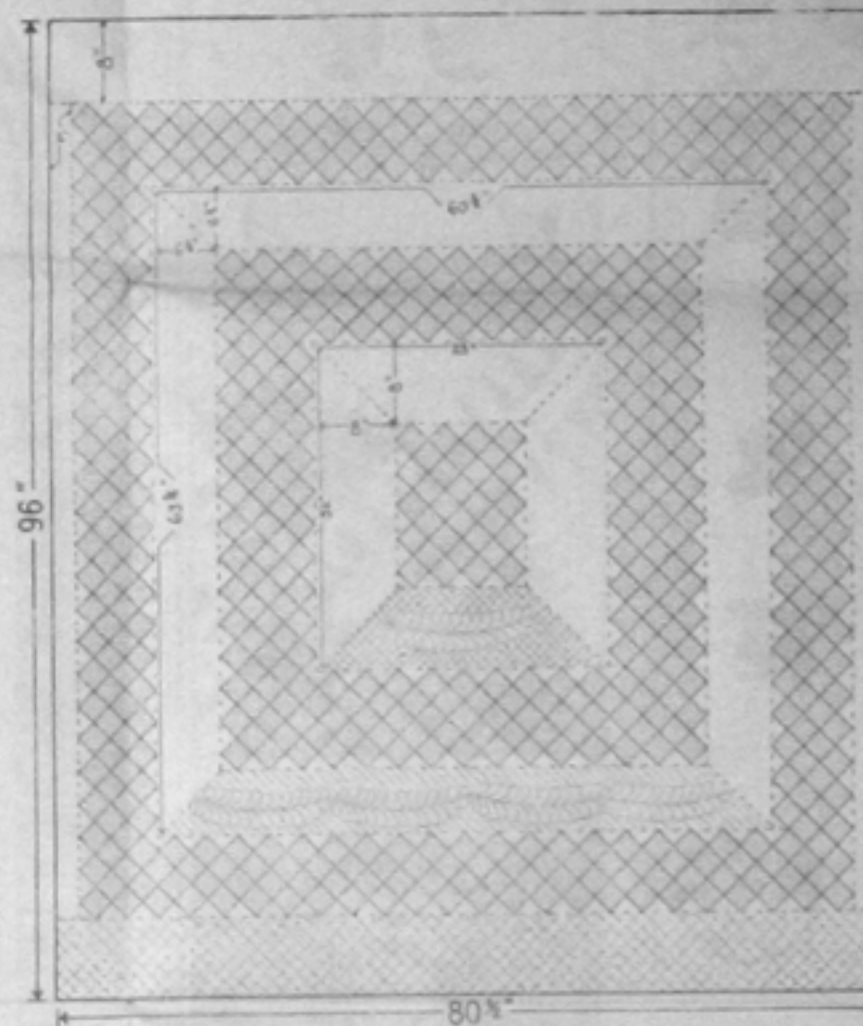
Makes the center panel of prints by joining the squares in strips: two strips of 3 squares each, two of 5 each, two of 7 each; add one square in each of two opposite corners (see diagram of quilt). All the prints should be arranged so that no two that are alike are directly joined. Attach the 29x8" and 32x8" white borders.

The wide borders of printed squares are also made by joining pieced strips. The inner border (3 squares deep on the diagonal) is made by joining pieced strips of 5 squares each. Forty of these are needed; in addition, for two corners, join two strips of 9 squares each, two of 7 each, two of 5 each, and two of 3 each, adding a single square in each of the two corners. Refer to the diagram of the quilt to see how simple this is. Make the edges straight by piecing in white triangles as shown by the broken lines on the diagram; (small triangles in the inside corners).

Next attach the 60 1/2"x6 1/2" and the 53 1/2"x6 1/2" white borders. Follow this with the outer printed border panel (2 squares deep on the diagonal). This is made just as was the wider border of prints, except that the strips have 4 instead of 5 squares each. Piece and join together eighty of these strips; in addition, for two corners, join two strips of 7 squares each, two of 5 each, two of 3 each, and add a single square in each of the two borders. Piece in white triangles to make straight edges.

Last comes the outer white border: two strips 80 1/2"x8", and two 80x2". Attach binding of a plain color (or print) that predominates in the prints used for the piecing.

Diagram of Boston Common quilt, giving finished dimensions and illustrating the quilting suggestion.



**Quilting Suggestion.** Follow exactly the same plan as outlined in the Quilting Suggestion for "Cross Purposes." The only exception is, place only one curved feather in each white strip directly around the center panel of prints. The inner white space on "Cross Purposes" is long enough for two feathers, but this space is shorter. See Quilting Suggestion for "Cross Purposes."

**YARDAGE REQUIRED**

Calculated for material 36" wide

634 squares..... 1 1/4 yds. each of twenty prints. (Cut 20 to 32 squares from each of the prints.)  
252 triangles..... 5 yds. White  
White border strips..... 5 yds. White

Provide additional material for back and binding.

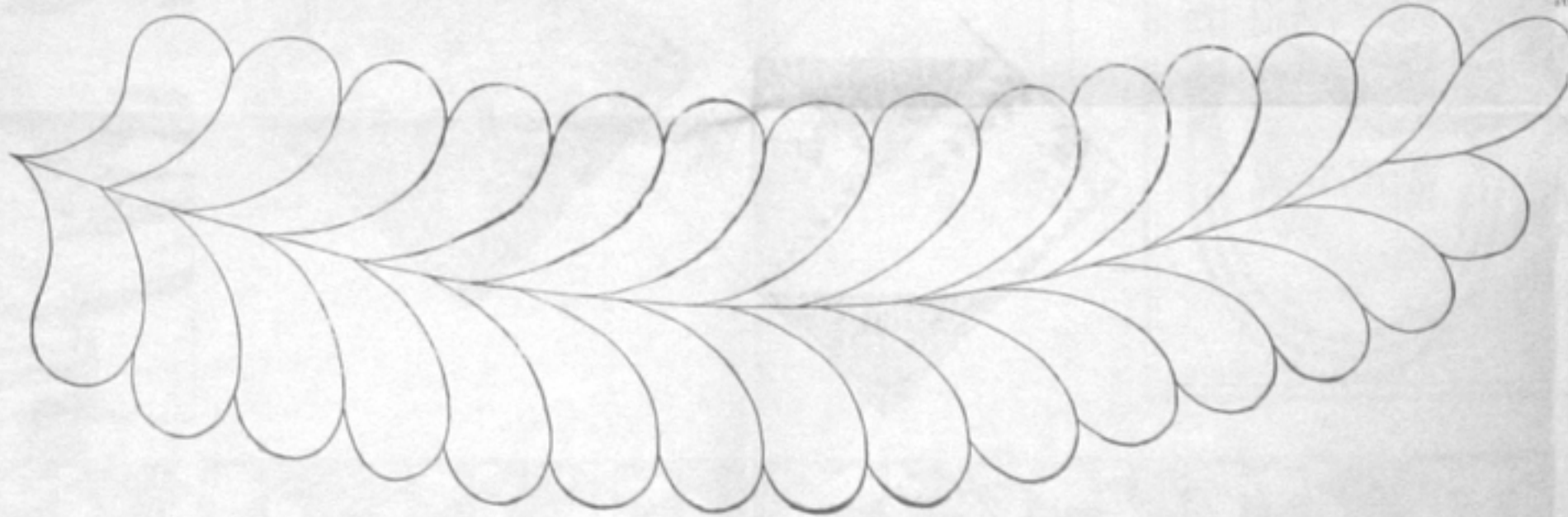
**For a Smaller Quilt,** suitable for a twin bed and measuring 71 1/2

x88 1/2", use a two-inch square (and half-square), instead of the one given above. Cut the same number of squares and triangles and join just as shown for the large quilt. The white borders will necessarily be cut smaller, as follows: two strips 25 1/2"x7" and two 28 1/2"x7"; two strips 53 1/2"x5 1/2" and two 36 1/2"x5 1/2"; two strips 80 1/2"x2" and two 71 1/2"x8". These are the finished measurements; allow enough additional for seams. **Yardage Required:** Prints same as for large quilt; 4 1/4 yds. White instead of the 5 yds. quoted for the large quilt. Provide additional material for back and binding.

**Curved Feather for Quilting**

We suggest that a perforated pattern be made of this curved feather for marking the quilting. To perforate, stitch exactly along the lines with an unthreaded sewing machine, or do it by hand with a large needle. Transfer the design to the quilt top by dusting over the perforated pattern with a soft pad that has been dipped into stamping powder. (This powder is obtainable at fancy-work and art goods counters.) Leave several inches of paper margin beyond the perforations to keep the powder from getting onto the rest of the quilt. The perforated pattern must be placed smooth side up.

If stamping powder is not available, use ground cinnamon. If either the powder or the cinnamon shows a tendency to brush off before the stitching is done, go over the design lightly with a sharp pencil.



**NOTICE**  
Wrappers for certain having working patterns for quilts printed thereon are covered by application for letters patent in the United States Patent Office.  
Copyright, 1932  
**THE STEARNS & FOSTER COMPANY**  
Lockland, Cincinnati, Ohio

