



74—FLORAL WREATH



A—TUMBLING BLOCKS



102—DEW DROP



70—STAR BRIGHT



35—GRANDMOTHER'S FLOWER GARDEN



111—DADDY HEX



28—MARTHA'S VINEYARD



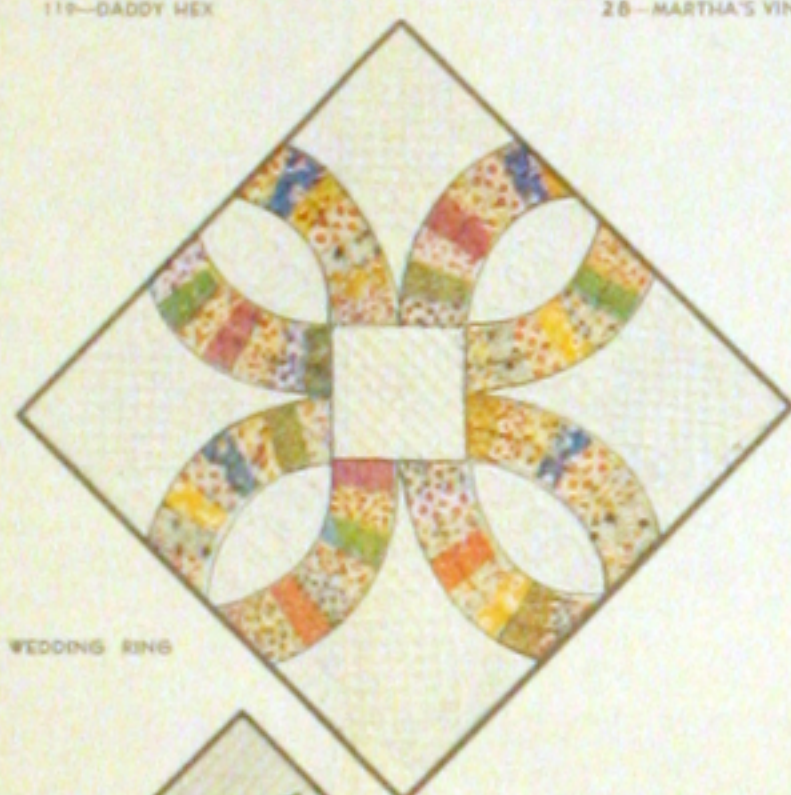
34—HOMESPUN



F—SUNFLOWER



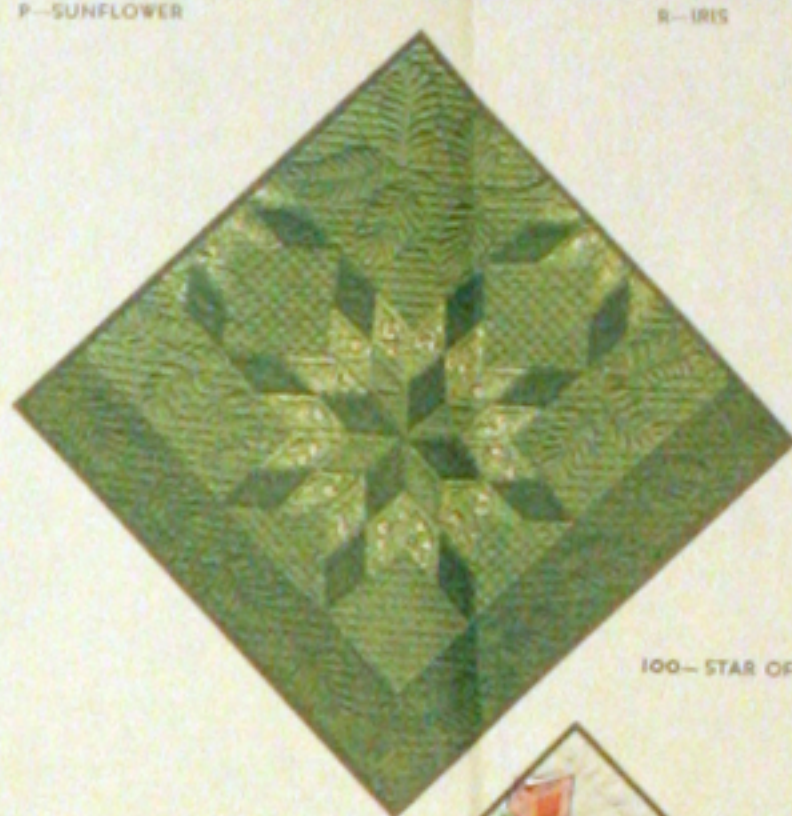
8—IRIS



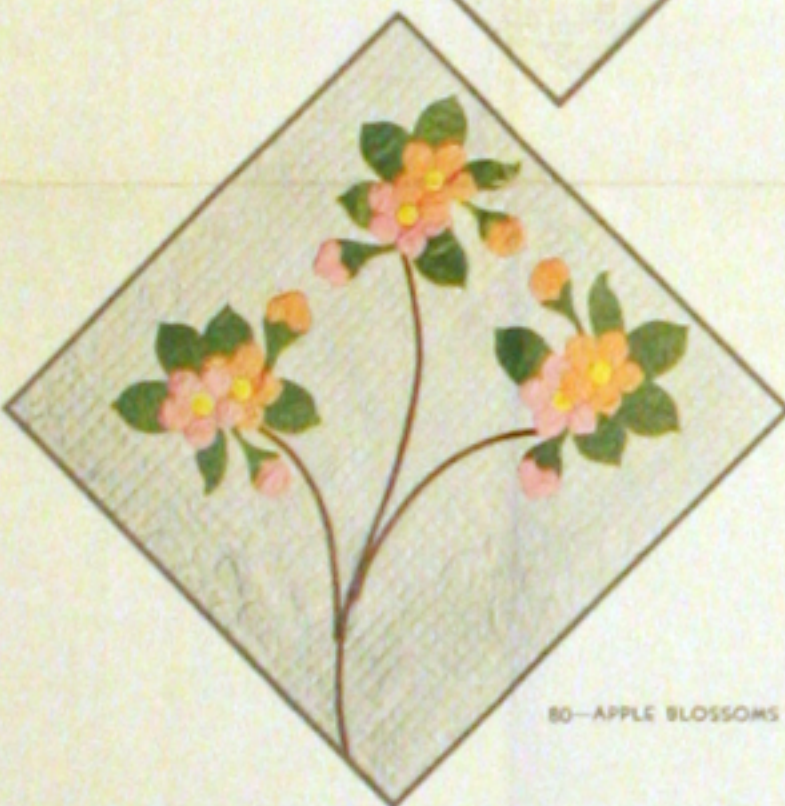
31—DOUBLE WEDDING RING



F—THE LONE STAR



100—STAR OF BLUEGRASS



80—APPLE BLOSSOMS



83—COUNTRY GARDENS

**SAVE THIS WRAPPER**  
 THERE IS A VALUABLE QUILT PATTERN ON THE REVERSE SIDE.  
**NOTE** — Patterns for quilts shown on this wrapper and in our catalog may be ordered at a saving with the coupon which is printed below.

1 lb. 3 oz.

ONE SEAMLESS SHEET

**FULL QUILT SIZE - 81 BY 96 INCHES**

# MOUNTAIN MIST

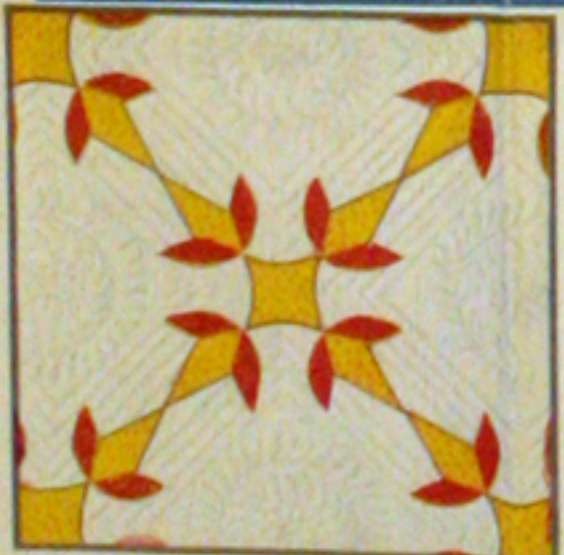
REG. U.S. PAT. OFF. AND IN CANADA

**NEEDLE-EASY "GLAZENE" FILLING for QUILTS**

*Uniform in Thickness • Does Not Stretch Thin • Makes a Quilt That Will Wash Beautifully*

THE STEARNS & FOSTER COMPANY LOCKLAND, CINCINNATI OHIO

ALL COTTON  
 100% NEW MATERIAL  
 0800 REGISTRY No. 52



23—TURKEY TRACKS



X—NEW YORK BEAUTY



79—DOGWOOD



30—BOSTON COMMONS



64—COUNTRY LANES



93—SPRING WREATH



30—OHIO ROSE



75—DRESS IN PLATE



76—DAISY CHAIN



106—COLUMBINE

#42  
Country Gardens @1932

# CROSS-STITCH GARDEN

Pattern Number 42 of the Mountain Mist Series  
A PIECED QUILT

This quaint garden quilt is bloom in all weathers, and it is fascinating and easy to make. A new idea in quilt patterns, the flowers and pool are formed from 1-inch squares, thus transferring the technique of cross-stitch embroidery to the quilt making art with most interesting and satisfactory results. No diagram can suggest the charm of the finished top, with its blending colors grouped artistically around the center pool where white water lilies float. Start cutting the material today, and very soon you will have pieced a really unique and appealing quilt top.

The colors suggested on the Yardage Chart are a medium, soft green background; a light green pool with white water lilies and dark green lily pads. The wide flower border around the pool includes two shades each of blue, yellow (yellow and oak), rose, and lavender, with medium and dark green foliage. The long cross strips and the outer border are white, giving the effect of gravel paths. Other colors, in the same arrangement as shown on the piecing guide, could be substituted, emphasizing the predominant color note of the room in which the quilt is to be used.

6. After the center panel composed of forty-two blocks, each made up of thirty-six squares, has been set together, attach the light green background strips. First, on either side attach the narrow 2x42" strips; then at the top and bottom attach the two 7x40" strips. This completes the center panel of the quilt.

7. The top and bottom and side panels are identical as to piecing. Follow the Small Panel Piecing Chart. Each small panel is pieced of 1-inch squares and should measure when finished 11x18". The piecing of the medium green directly around the colors is not shown on the diagram of the quilt, which aims to give the color effect rather than a piecing guide. Note that the panel is divided into three parts by the heavy line every sixth row, across. Piece the panel in these three sections. The eighteen rows (each with eleven 1-inch squares) are numbered to make it easy to locate your position in piecing or joining the sections. As each section is pieced, join it in its proper relation to its neighbor, forming the complete pieced panel. No triangular pieces are used in these small panels.

8. When all four small side and end panels have been pieced, complete them by attaching the light green background strips. To two panels, attach 2x18" strips at top and bottom, and the 11x15" pieces at the sides. To the two remaining panels, attach 2x18" strips at top and bottom, and the 19x15" pieces at the side.

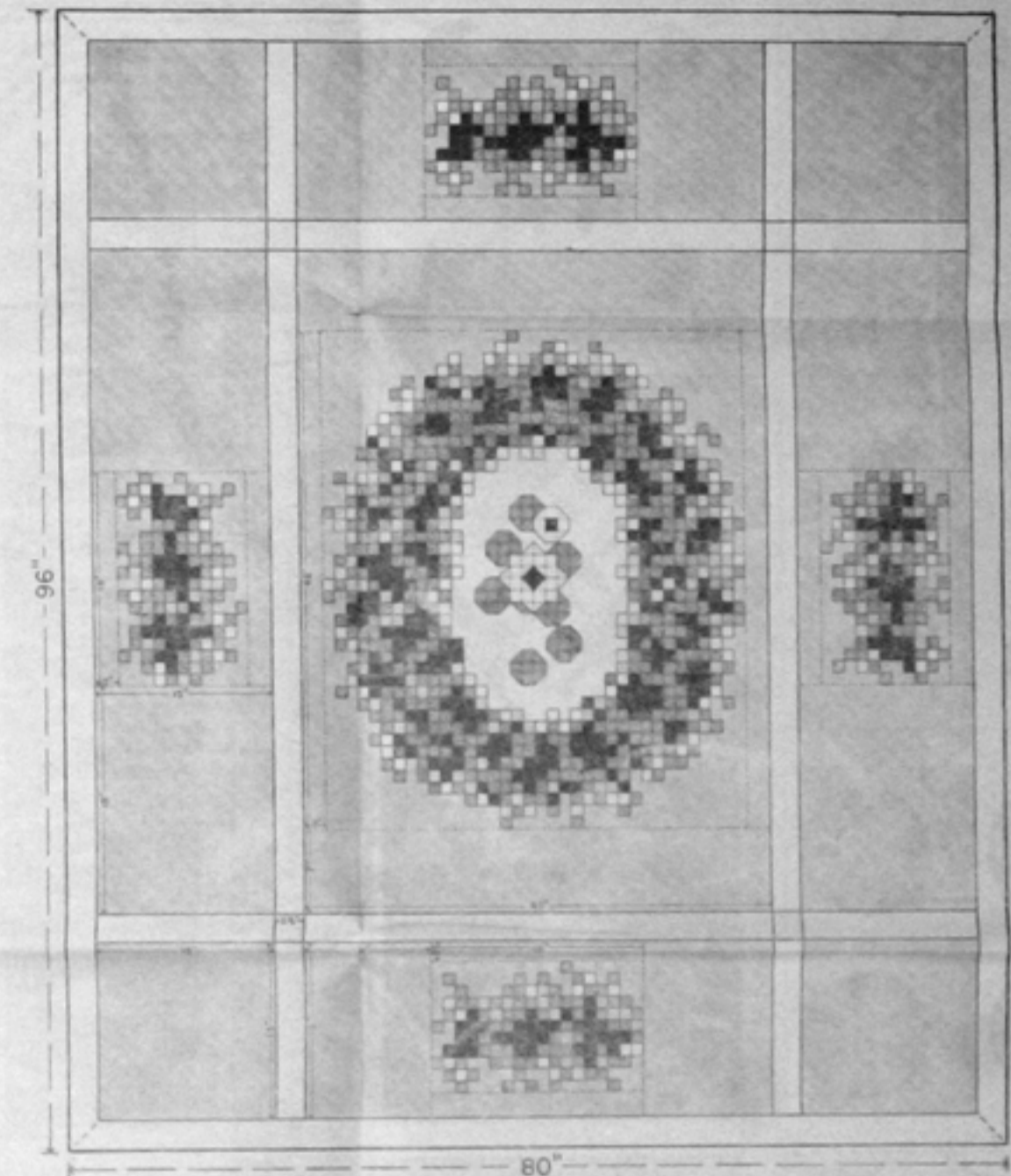
9. Now the center panel and all four side and end panels have been completed, and it remains only to set them together with the long white strips and the green corner squares. Set them together as shown on the diagram of the completed quilt. First attach the 2 1/2 x 40" and 2 1/2 x 56" white strips around the center panel; fill in the corners with the 2 1/2" white squares. Next attach a 2 1/2 x 15" white strip at the sides of each side and end panel; then join these panels at the top, bottom and both sides of the quilt. On these small panels, note that the top of each is distinguished by one green square extending above the flowers; there are five of these green squares at the lower ends of these panels. Join to the quilt so that the tops of these panels are towards the center of the quilt, except in the case of the panel at the top of the quilt, where this position is reversed; note the diagram of the finished quilt.

Square off the corners by piecing in the green 1 1/2-inch squares. Complete the quilt top by attaching the long white outer border strips; trim the corners.

10. The final step is the quilting. This includes fixing the quilt back to the quilting frame, laying on the Mountain Mist Quilting Cotton and the quilt top, stretching and fastening the entire quilt, marking and stitching the quilting design (see Quilting Suggestion), and binding the edges of the quilt. Bind preferably in the green.

If you have no space to accommodate a quilting frame, use the Mountain Mist Quilting Hoop. This strong, durable, twenty-inch hoop has been tested and proved to be thoroughly efficient and practical. It stretches all three layers of the quilt evenly, firmly, and without a wrinkle. Easily handled and carried about; made to last a lifetime. Sold by your dealer, or write us direct.

Diagram of the Quilt finished dimensions given



## DIRECTIONS:

1. First make a pattern for the 1-inch square and the triangle to be used for marking the pieces. To do this, trace the outlines of the actual size square, and the triangle, through thin paper and paste onto cardboard; or, transfer directly to cardboard with carbon paper. Cut out exactly along the lines. It is a good idea to make several of the square patterns, since there are many pieces to be marked; then when the edges of the cardboard pattern begin to wear in the marking, a new pattern is at hand.

2. If there is any doubt about the color fastness, or if there is a possibility of shrinkage, first wash and iron the cloth. If the material for the top is washed, also shrink the goods for the quilt back before quilting.

3. Now mark the required number of parts (see Yardage Chart) on all except the white and medium green cloth. Mark on the wrong side of the goods, spacing the outlines far enough apart to allow for 1/4-inch seams, or less if preferred. Do not cut along these lines; cut a seam's width outside them. For accurate piecework always mark in this manner; to repeat, first outline the actual size patterns on the back of the goods, then cut a seam's width, judged by eye, outside these lines. The pieces are then joined with a running stitch exactly along the penciled lines, which are on the wrong side of the goods and therefore easy to follow. This exactness in piecing insures a flat, smooth quilt.

When cutting out the pieces, keep the colors in separate groups to simplify the choice of pieces for joining.

4. Before marking off the parts on the white goods, cut the outer white border strips as well as the white strips that run across the quilt. First cut the border strips: two strips to finish 2 1/2 x 96", and two to finish 2 1/2 x 80". Also cut two strips to finish 2 1/2 x 56" and two to finish 2 1/2 x 40". In addition cut eight strips to finish 2 1/2 x 15", for the corners, and four small squares to finish 2 1/2 x 2 1/2" for the intersections. Allow additional for seams in all

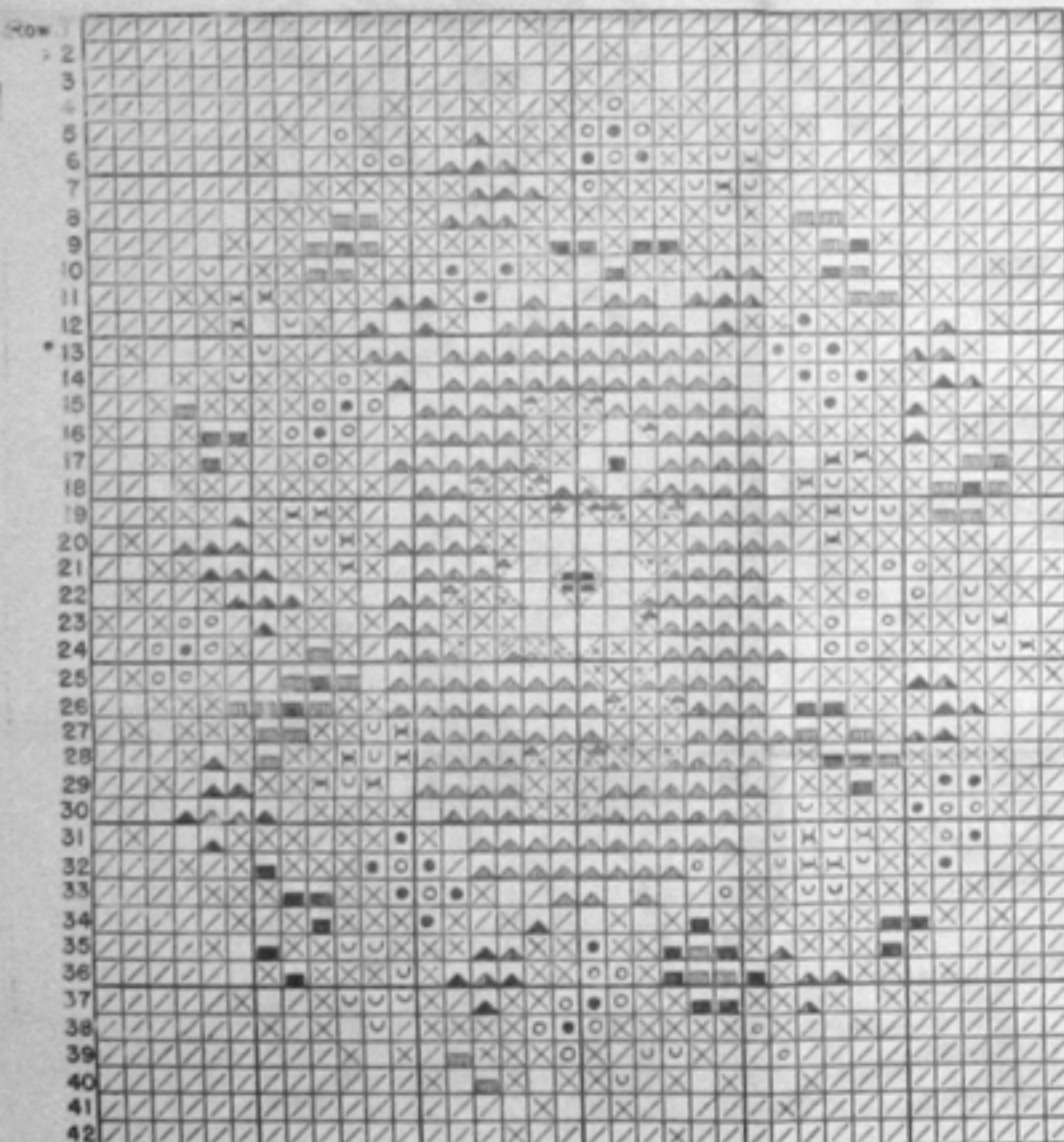
cases; for example, cut the small square 3x3" to allow 1/4-inch seams. From the remaining material cut the white squares and triangles as listed on the Yardage Chart. Note that in the pool section of the center panel, a number of triangles (half-squares) occur. The piecing guide shows the proper color for each triangle.

Also cut the following background sections from the medium green material before using any medium green for the 1-inch squares. To complete the background for the center panel, cut two strips to finish 7x40", and two to finish 2x42". For the small top and bottom panel backgrounds, cut four strips to finish 11x15", and four to finish 2x18". For the two small side panel backgrounds, cut four more strips to finish 2x18", and four to finish 19x15". Cut four corner squares to finish 15x15". Allow about 1/4-inch additional on all sides for seams. From the remaining material, cut the 898 green 1-inch squares, as listed on the Yardage Chart.

5. Proceed to piece the center panel, following the Center Panel Piecing Chart. The panel is pieced of 1-inch squares, and a few triangles, and should measure when finished 36x42". The piecing lines directly around the wide flower border (center panel) are not shown on the large quilt diagram, which is planned to give the color effect rather than to be a piecing guide.

Note that on the chart the panel is divided, by means of heavy lines every sixth row, into forty-two blocks. It will simplify the piecing and joining if each of these blocks is assembled separately, following the symbols opposite the colors on the Color Guide. The rows (thirty-six squares to each row, across), are numbered merely to make it easier to locate your position either in piecing or joining the blocks. When the first two blocks have been pieced, join them together in the position shown on the Center Panel Piecing Chart. On completing the next block, join it in its proper relation to the other two, and so on, adding each block as it is completed to the body of the panel. Six of the blocks in the center of the panel will include a few triangular pieces; these should be joined to form squares, then joined as usual with other squares to form the block.

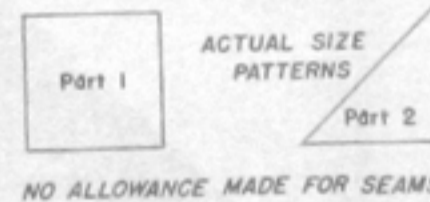
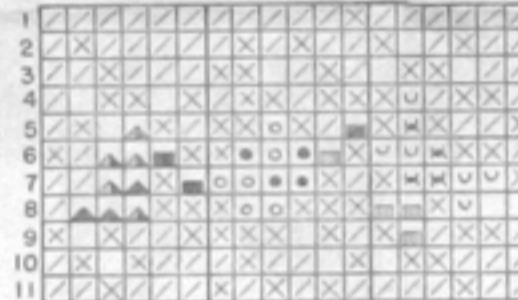
CENTER PANEL PIECING CHART



COLOR GUIDE

- White
- Pale Green
- Green
- Dark Green
- Light Blue
- Blue
- Yellow
- Oak
- Light Rose
- Rose
- Orchid
- Lavender

SMALL PANEL PIECING CHART



## YARDAGE CHART

Calculated for material 36 inches wide

PIECES	Part 1 Part 2		
	Part 1	Part 2	
2 1/2 yds. White	164	15	Border strips
1 1/2 yds. Pale Green	185	31	
5 1/4 yds. Green	808		Background strips and squares
1 1/2 yds. Dark Green	692	29	
3/4 yd. Light Blue	52		
3/4 yd. Blue	45		
3/4 yd. Yellow	52		
3/4 yd. Oak	48	4	
3/4 yd. Light Rose	70		
3/4 yd. Rose	45		
3/4 yd. Orchid	61		
3/4 yd. Lavender	41		

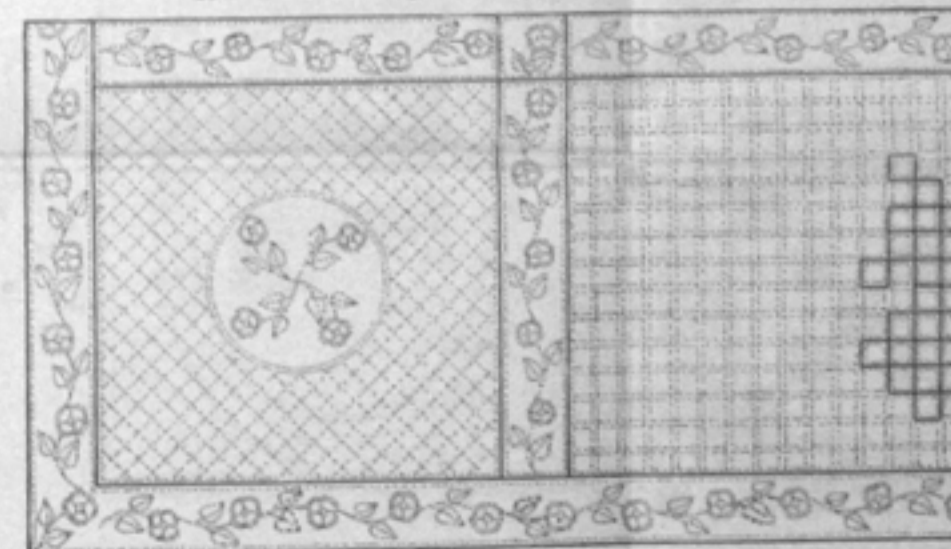
Provide additional material for quilt back and binding.

## QUILTING SUGGESTION

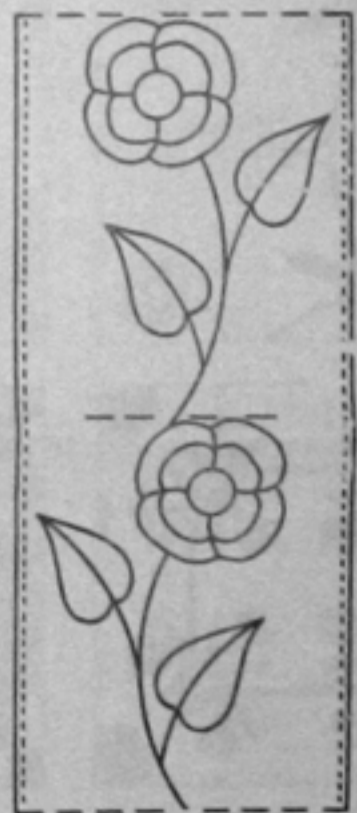
A simple quilting plan, carrying out the cross-stitch effect on the piecing, is a good choice. Outline directly around all the seams on the pieced parts of the quilt top, and continue to mark with similar double lines on all the green background areas surrounding the pieced panels. The diagram below, showing the lower left section of the quilt, illustrates this stitching. These lines can easily be marked with pencil and ruler.

The white strips are marked with the little flower design shown right in actual size. This pattern is easily transferred by placing the diagram under the cloth and following the design lightly with a sharp pencil, as it shows through the goods. Keep moving the pattern along the strips, marking two flowers each time.

QUILTING DIAGRAM, showing a corner of the finished quilt



QUILTING PATTERN



Four of the flowers are marked in the center of each green corner square, and are set off by a double circle of stitching. The remaining space is filled in with single checks, formed by intersecting diagonal lines and easily marked with a ruler and pencil.

Always mark lightly, so that the lines can be removed with an Art Gum eraser after the quilting is completed. Quilt with thread to match the cloth being stitched. Work your name and the date of making into one corner of the quilt.



NOTICE  
Wrappers for cotton having working patterns for quilts printed thereon are covered by application for letters patent in the United States Patent Office.  
Copyright 1932  
THE STEARNS & FOSTER COMPANY  
Lockland, Cincinnati, Ohio