



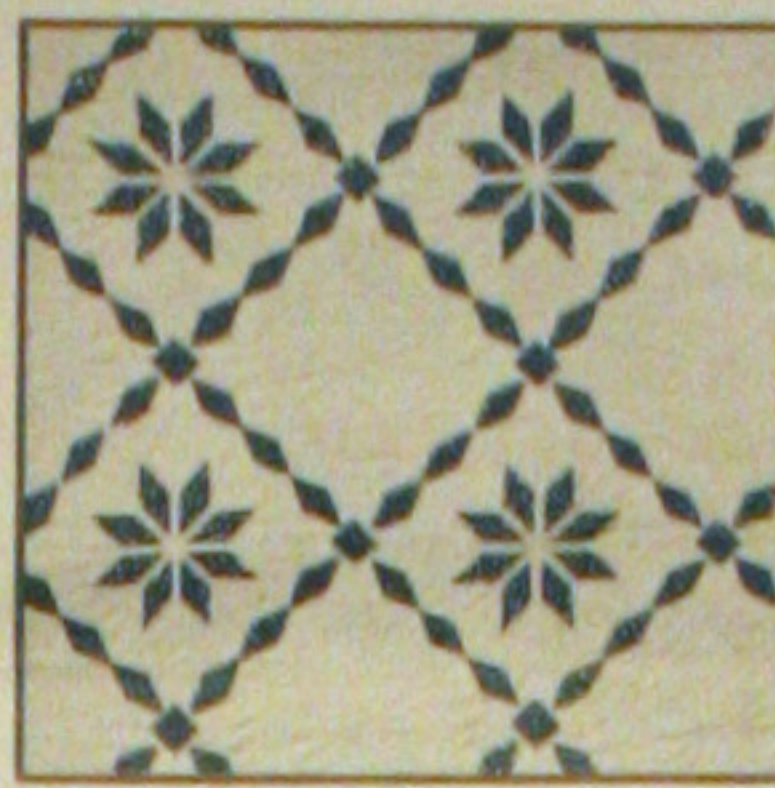
74 - FLORAL CAMEO



A - TUMBLING BLOCKS



102 - DEW DROP



70 - STAR BRIGHT



35 - GRANDMOTHER'S FLOWER GARDEN



119 - DADDY HEX



28 - MARTHA'S VINEYARD



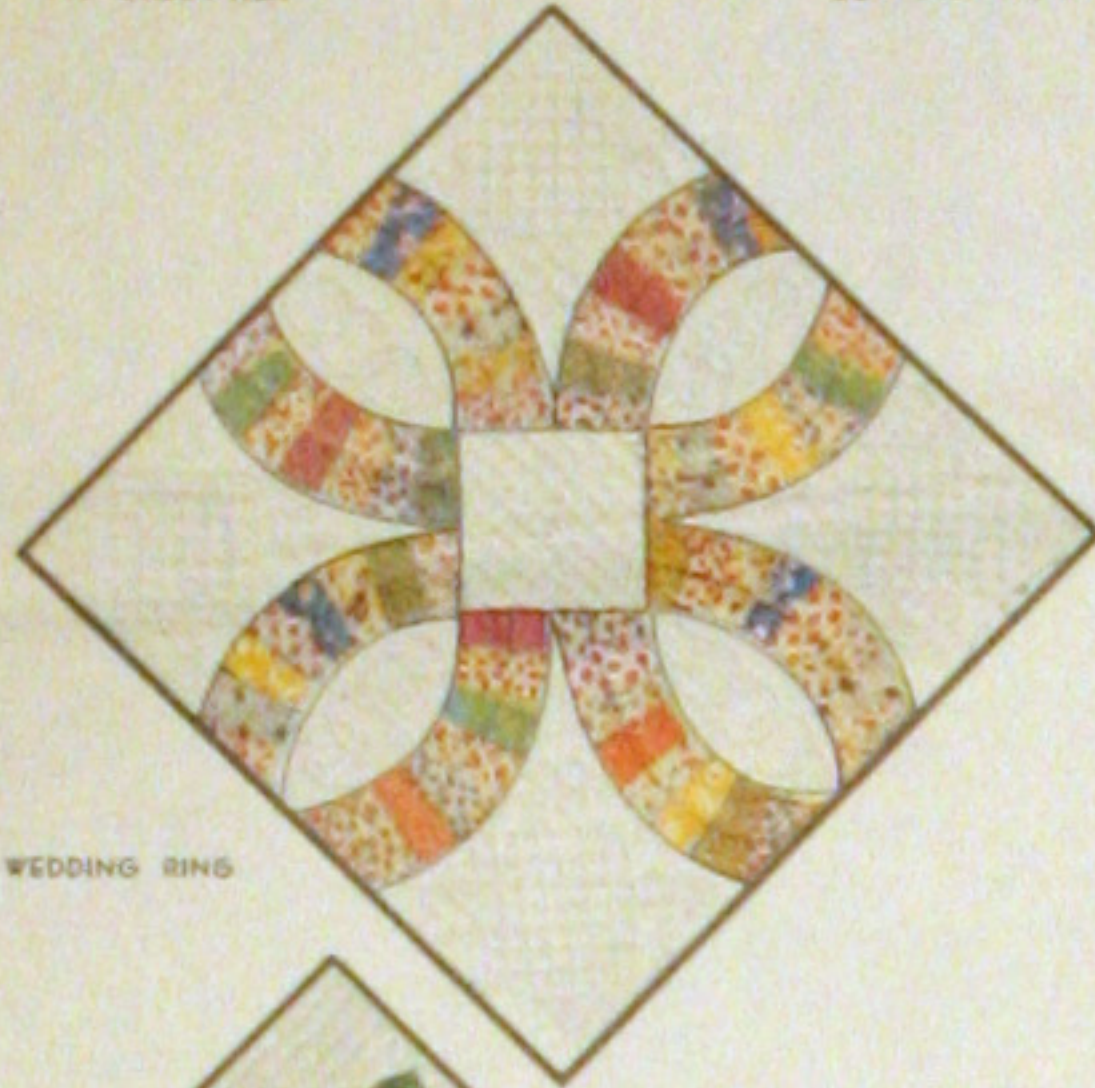
34 - HOMESPUN



P - SUNFLOWER



B - IRIS



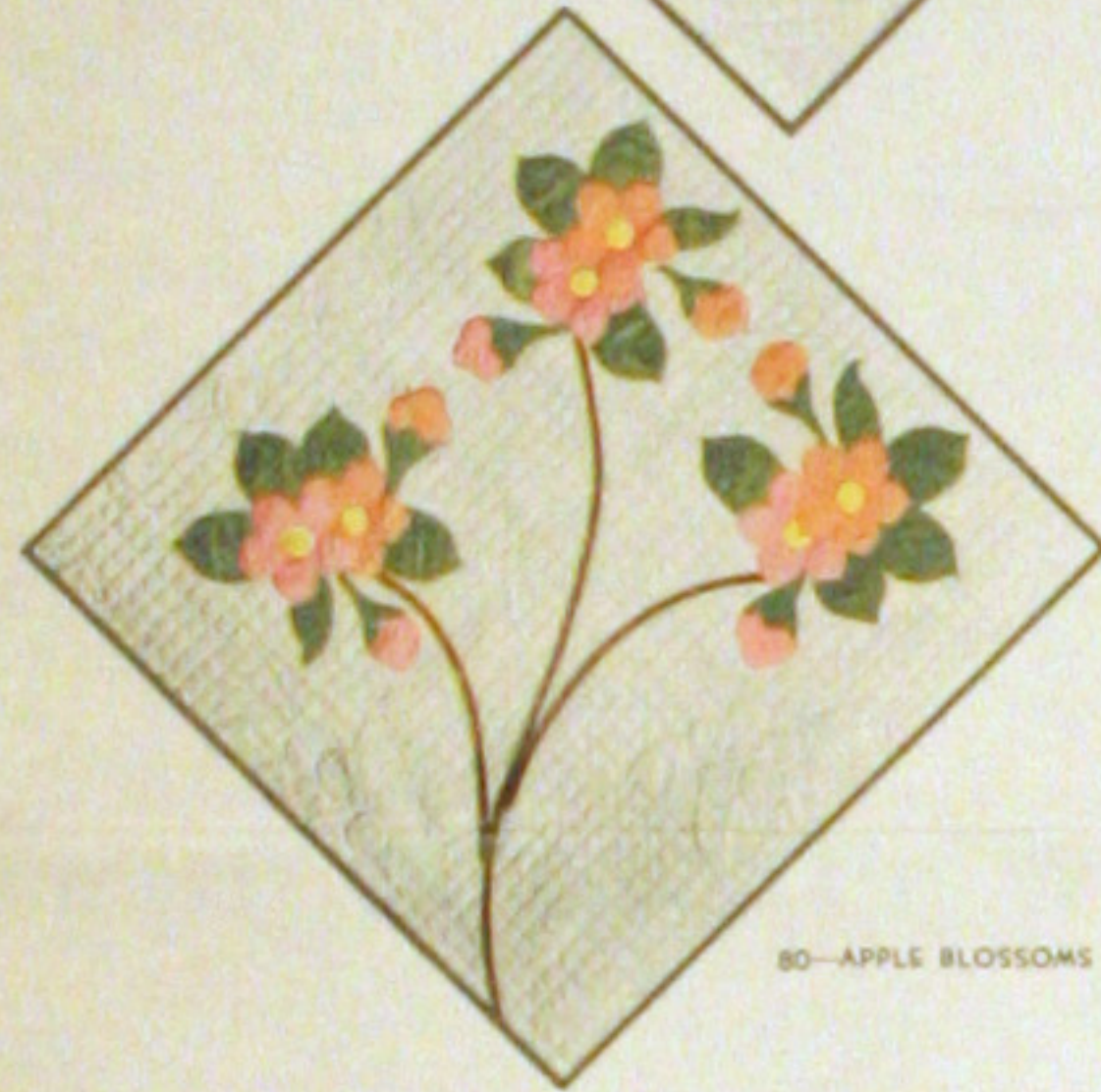
21 - DOUBLE WEDDING RING



E - THE LONE STAR



100 - STAR OF BLUEGRASS



80 - APPLE BLOSSOMS



83 - COUNTRY GARDENS

SAVE THIS WRAPPER
THERE IS A VALUABLE QUILT PATTERN
ON THE REVERSE SIDE.
NOTE - Patterns for quilts shown on this
wrapper and in our catalog may be ordered at
a saving with the coupon which is printed below.

FULL QUILT SIZE - 81 x 96 INCHES

100% DACRON* POLYESTER FIBERFILL

MOUNTAIN MIST

REG. U.S. PAT. OFFICE AND IN CANADA

MADE WITH **DACRON***

*TRADE-MARK FOR DUPONT POLYESTER FIBERFILL

"GLAZENE"™ FINISH for EASY HANDLING

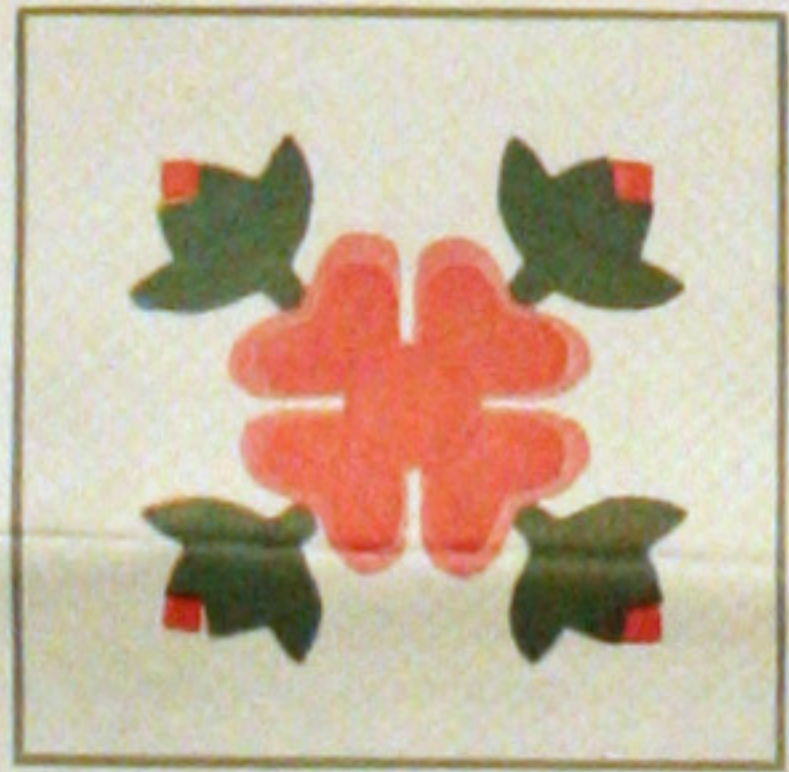
Uniform in Thickness • Properly Quilted Washes Beautifully • We Recommend using an 80-Square Material

THE STEARNS & FOSTER CO.
Manufacturers of MOUNTAIN MIST, Filling for Quilts
CINCINNATI, OHIO 45215

ALL POLYESTER
100% NEW MATERIAL
OHIO REGISTRY No. 52
RN 19002



93 - SPRING WREATH



20 - OHIO ROSE



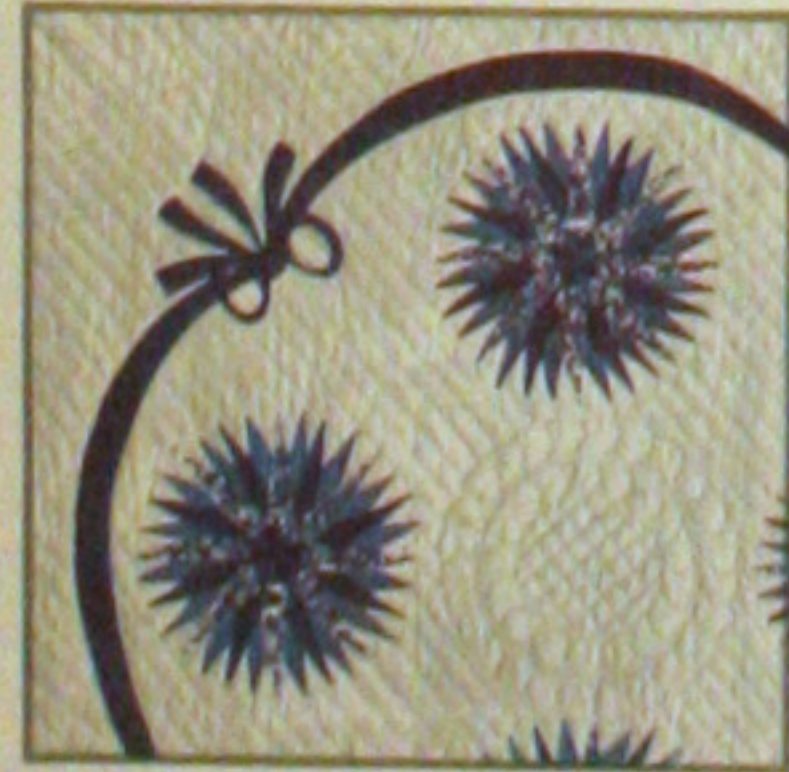
75 - DRESDEN PLATE



76 - DAISY CHAIN



106 - COLUMBINE



105 - SUNBURST



94 - ODDS AND ENDS



112 - POPPY WREATH

1981-85

THE ROSE TREE

Pattern No. 43 of the Mountain Mist Series An Applique Quilt

Of all the rose patterns, old and new, dear to the heart of the quilt maker, this beautiful full-blown rose is certainly the most interesting. Its newness and originality, particularly the central "rose tree," will appeal to those who like to own distinctive as well as beautiful quilts. The design is not only unique (and exclusive to the Mountain Mist Series), but it is also one of the most graceful and pleasing applique patterns available.

Easy to cut and place, following the detailed instructions below, much of the effectiveness of this design is in the arrangement of the flower petals; notice how the white background shows through between the petals. A wide choice of colors awaits the individual quilt artist, using the same arrangement as indicated on the Yardage Chart; that is, the paler tint for the outside petals, etc. If preferred, all the petals might be of the same shade. In addition to pink, rose, light crimson, and all their variations, consider the possibilities of a Tea Rose quilt, or the soft tones of the yellow-orange tints of the Talieman Rose!

To the left and directly below are shown the actual size patterns for marking the goods. To the right is a diagram of the finished quilt, showing how to applique and join the center panel, the six side blocks, the four end blocks, the four corner blocks, and the one-inch green border that finishes the edge of the quilt. Below this is a diagram showing in detail how to place the "rose tree" applique on the center panel.

Diagram of the Quilt finished dimensions given



There is no set rule for placing the leaves that appear with the roses here; they are intended to fill in between the blossoms, covering an imaginary supporting arch of stems. Place a few leaves as shown in the diagram, or put them in at random to suit personal taste.

As for the curving green twigs, note that there are two of these to each side of the tree; they start near the top, disappear under the roses, reappear, crossing at the top and arching down the opposite side of the tree, and finally they appear again from under the roses and curve back across the tree, each ending in a tight green bud (Part 10). Knowing how far above the topmost rose the twigs cross, it is a simple matter to place the curve, using the diagram as a guide. It is a good idea to sketch the proposed line lightly in pencil, then baste and applique the strips into place. Before basting, make sure that both sides of the panel are alike; fold the sides together and see whether the lines fall together; if not, adjust. When basting, fold the raw edges of the bias strips under until they meet at the back, giving a double thickness of smooth bias.

After all these parts have been basted into position, applique with thread of the same color as the cloth being sewed. This finishes the center panel.

Now mark the position of the double-headed rose figure on the side and end blocks. The figure is shown in actual size at the left; when this figure is folded exactly along the dotted line, the flower drops to the correct reverse position on the left side of the stem. To make an outline of this figure (not shown complete because of lack of space), fold as above; then transfer the design in reverse to the left side of the stem by placing carbon paper face down and following the lines of the rose figure from the back of the pattern. The complete double-headed rose figure is the result. Over this place each of the six 20 x 22" blocks, and the four 20 1/2 x 17" blocks. Lightly penciling the lines as they show through onto the cloth. Pin and baste stems, leaves and flowers into position, and applique with thread in matching colors.

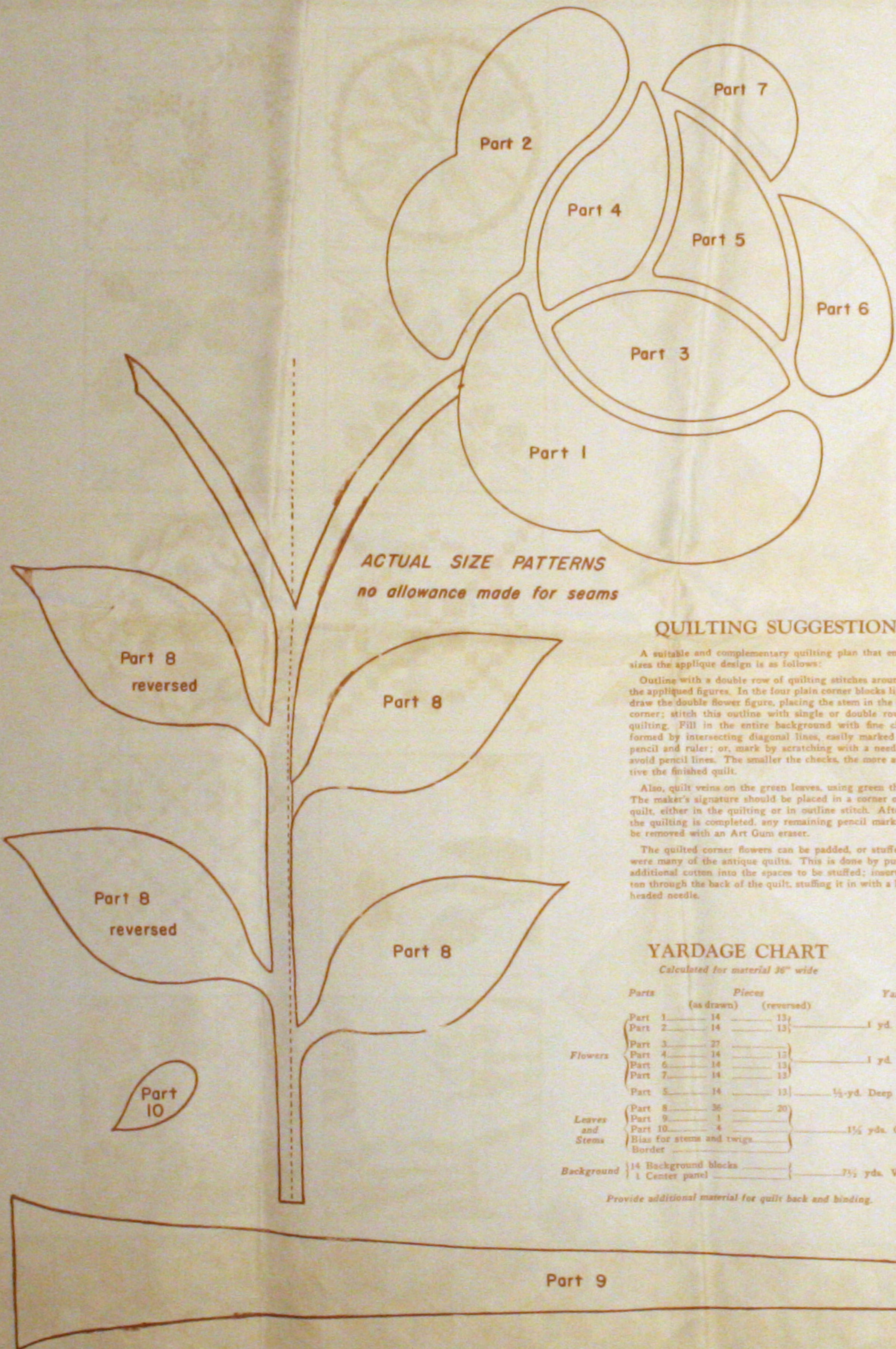
Following the diagram of the finished quilt, join three side blocks to either side of the center panel; join the top and bottom blocks. Fill in the corners with the four plain 19 1/2 x 17" blocks. Attach the 1-inch green border strips, mitre the corners, and the top is completed.

The final step is the quilting, which includes fixing the quilt back to the quilting frame, laying on the Mountain Mist Quilting Cotton and the quilt top, stretching and fastening the entire quilt, marking and stitching the quilting design (see Quilting Suggestion), and binding the edges of the quilt. Bind preferably in the green.

If no quilting frame is available, use the Mountain Mist Quilting Hoop. Experts approve this new quilting device. It is practical, and easy to use. Strong and durable, it keeps the quilt top, the Mountain Mist, and the back stretched evenly and firmly. Light and handy to carry about, it makes pick-up work of quilting. Sold by your dealer, or write us direct.

*Illustration of the quilt with the diagram under the roses.

Detail Diagram of Center Panel Measurements



ACTUAL SIZE PATTERNS
no allowance made for seams

QUILTING SUGGESTION

A suitable and complementary quilting plan that emphasizes the applique design is as follows:

Outline with a double row of quilting stitches around all the appliqued figures. In the four plain corner blocks lightly draw the double flower figures, placing the stem in the outer corner; stitch this outline with single or double rows of quilting. Fill in the entire background with fine checks formed by intersecting diagonal lines, easily marked with pencil and ruler; or, mark by scratching with a needle, to avoid pencil lines. The smaller the checks, the more attractive the finished quilt.

Also, quilt veins on the green leaves, using green thread. The maker's signature should be placed in a corner of the quilt, either in the quilting or in outline stitch. After all the quilting is completed, any remaining pencil marks can be removed with an Art Gum eraser.

The quilted corner flowers can be padded, or stuffed, as were many of the antique quilts. This is done by pushing additional cotton into the spaces to be stuffed; insert cotton through the back of the quilt, stuffing it in with a large headed needle.

YARDAGE CHART

Calculated for material 36" wide

Parts	Pieces	Yardage
(as drawn)	(reversed)	
Part 1	14	1 yd. Pink
Part 2	14	
Part 3	27	1 yd. Rose
Part 4	14	
Part 5	14	
Part 6	14	
Part 7	14	1/2 yd. Deep Rose
Part 8	36	
Part 9	1	1 1/2 yds. Green
Part 10	4	
Bias for stems and twigs		
Border		
Background	14 Background blocks	7 1/2 yds. White
	1 Center panel	

Provide additional material for quilt back and binding.

COPYRIGHT 1934

The STEARNS & FOSTER Company
Luttrell, Cincinnati, Ohio

ALL RIGHTS RESERVED

Wrappers for cotton having working patterns for quilts printed thereon are covered by application for letters patent in the United States Patent Office

FOUNDED
S & F
1846