

65—TRUMPET VINES



61—FORGET-ME-NOT



62—BED OF PEONIES



36—MARINER'S COMPASS



39—POINSETTIA



F—LONE STAR



31—POMEGRANATE

**Note!** THERE IS A VALUABLE QUILT PATTERN ON THE OTHER SIDE OF THIS WRAPPER

# MOUNTAIN MIST

NEEDLE-EASY  
"GLAZENE"  
COVERED

Uniform in Thickness • Does Not Stretch Thin • Makes a Quilt That Will Wash Beautifully

REG. U.S. PAT. OFF. AND IN CANADA  
QUILTING COTTON

Guaranteed by the Manufacturer  
100% NEW COTTON FIBER  
NO SECOND-HAND MATERIAL

IN ONE SHEET—FULL QUILT SIZE—81 BY 96 INCHES

*Hollywood*  
COPYRIGHT 1937  
THE STEARNS & FOSTER CO.

*Stearns & Foster*  
THE STEARNS & FOSTER COMPANY  
LOCKLAND, CINCINNATI, OHIO

FORM  
PRINTED IN U.S.A. 65B



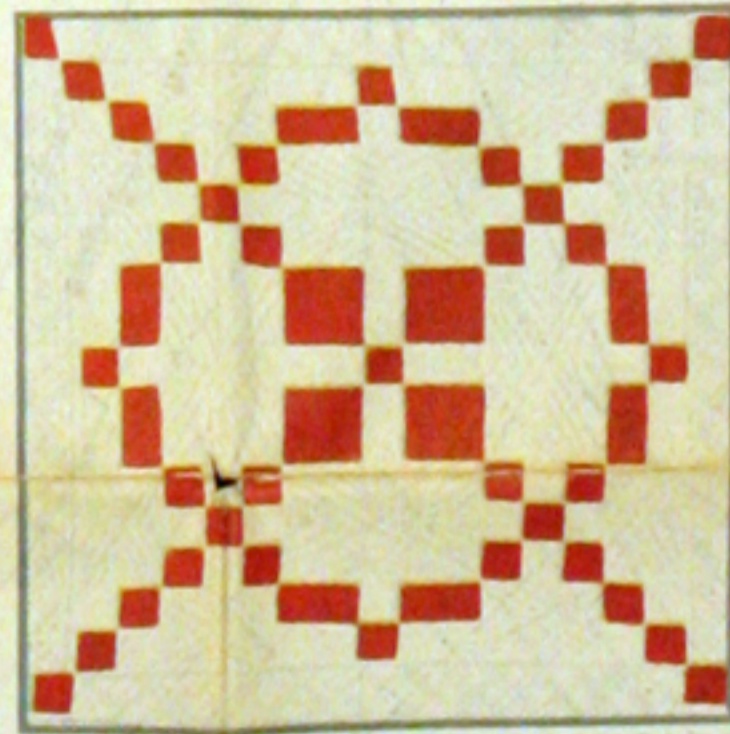
58—OLD MEXICO



P—SUN FLOWER



X—NEW YORK BEAUTY



34—HOMESPUN



63—BERMUDA BLOSSOMS



41—TULIP ROWS



55—CHERRY RIPE



64—COUNTRY LANES



R—IRIS



23—TURKEY TRACKS



29—FRIENDSHIP PLUME



49—HOLLYHOCK

#44 wrapper 01937

# "HOLLYWOOD"

Pattern Number 44 of the Mountain Mist Series  
Piecework and Applique

In answer to the demand for really new pieced quilt patterns, we offer this highly interesting original design that includes appliqued stars to heighten the effect. Exclusive to the Mountain Mist Series, and unlike any patterns now available, "Hollywood" offers many possibilities for stunning color arrangements. Unquestionably a new pattern idea, still it seems to be related to the old-time quilt tradition, as you can imagine were the design to be made up in several shades of blue, with blue and white stars. On the other hand, use of the color scheme presented below will result in a handsome and unique top, a distinctive forerunner of the modern taste in quilt making.

## DIRECTIONS

1. First make actual size patterns for each of the three parts. To do this, trace the outlines through thin paper and paste onto cardboard; or, transfer directly to cardboard with carbon paper. Cut out exactly along the lines.
2. If there is any doubt about the color fastness, or if there is a possibility of shrinkage, first wash and iron the cloth. If the material for the quilt top is washed, also shrink the goods for the back before quilting.
3. Before marking the parts off on the cloth, first cut the border strips from the gray material. Cut two strips to finish

ing. The quilt diagram is shaded to show the color effect. Whatever colors are chosen, we suggest that the light and dark tones be balanced as shown in the diagram and the Color Chart. Only three pieces make up the quilt top. They are shown below in actual size. The body of the quilt is made up of Parts 1 and 2 in several colors; Part 3, the star, is appliqued onto Part 2 before the piecing is begun. Below the diagram of the completed top is a color guide that further simplifies setting the quilt together. Heavy line quilting diagrams, easily followed, are also shown in actual size.

5 1/2 x 95 1/2", and two to finish 6 1/2 x 81"; allow additional for seams and for mitred corners.

Now mark the required number of parts (see Yardage Chart) on each color of cloth, "dove-tailing" the pieces together to save cloth. Mark Parts 1 and 2 on the wrong side of the goods, spacing the outlines far enough apart to allow for 1/4-inch seams, or less if preferred. Do not cut along these lines; cut a seam's width outside them. For accurate, easy piecework, always mark in this manner; that is, first outline the actual size patterns on the back of the goods, then cut a seam's width, judge by eye, outside the lines. The pieces

can then be joined with a running stitch along the penciled lines. This exactness in marking and piecing assures a flat, smooth quilt.

In marking the stars, Part 3, mark the actual size on the right side of the goods, spacing the outlines far enough apart to allow for seams. When a star is basted onto Part 2, the seams are turned under exactly on the penciled lines.

Note that four quarter pieces, and a number of half pieces of Part 2 are required. Do not cut the halves and quarters from whole Part 2 pieces; remember to allow for the 1/4-inch seam along the halved edge as well as on the other sides. Some of the pieces are halved lengthwise, and some up and down through the piece, as is clearly indicated on the diagram of the quilt.

As the pieces are cut out, keep the colors in separate groups to simplify the selection of parts for joining.

4. Now applique a star on each Part 2, excepting the half and quarter pieces. To locate the position, lay each Part 2 piece over the actual size diagram, or the quilting diagram with the heavier lines. The lines of the star will show through and can be lightly penciled onto the cloth; or, simply mark the six star points with pencil dots. Baste the stars into position, seams having been creased under, and applique with thread of the same color as the star being sewed. All the "A" combinations (see Color Chart) are gray Parts 2 with red (bittersweet) stars, and the "C" combinations are eggshell with poppy color stars; make thirty-six of the "A", and twenty-four of the "C" arrangements.
5. When all of Parts 2 (except the half and quarter pieces) have had the proper color stars applied on them, join Parts 1 and 2. To locate the position, lay each Part 2 piece over the actual size diagram, or the quilting diagram with the heavier lines. The lines of the star will show through and can be lightly penciled onto the cloth; or, simply mark the six star points with pencil dots. Baste the stars into position, seams having been creased under, and applique with thread of the same color as the star being sewed. All the "A" combinations (see Color Chart) are gray Parts 2 with red (bittersweet) stars, and the "C" combinations are eggshell with poppy color stars; make thirty-six of the "A", and twenty-four of the "C" arrangements.

Diagram to refer to for the effect of the shading, and the Color Chart as a quick, accurate guide, the top can be set together with speed and ease.

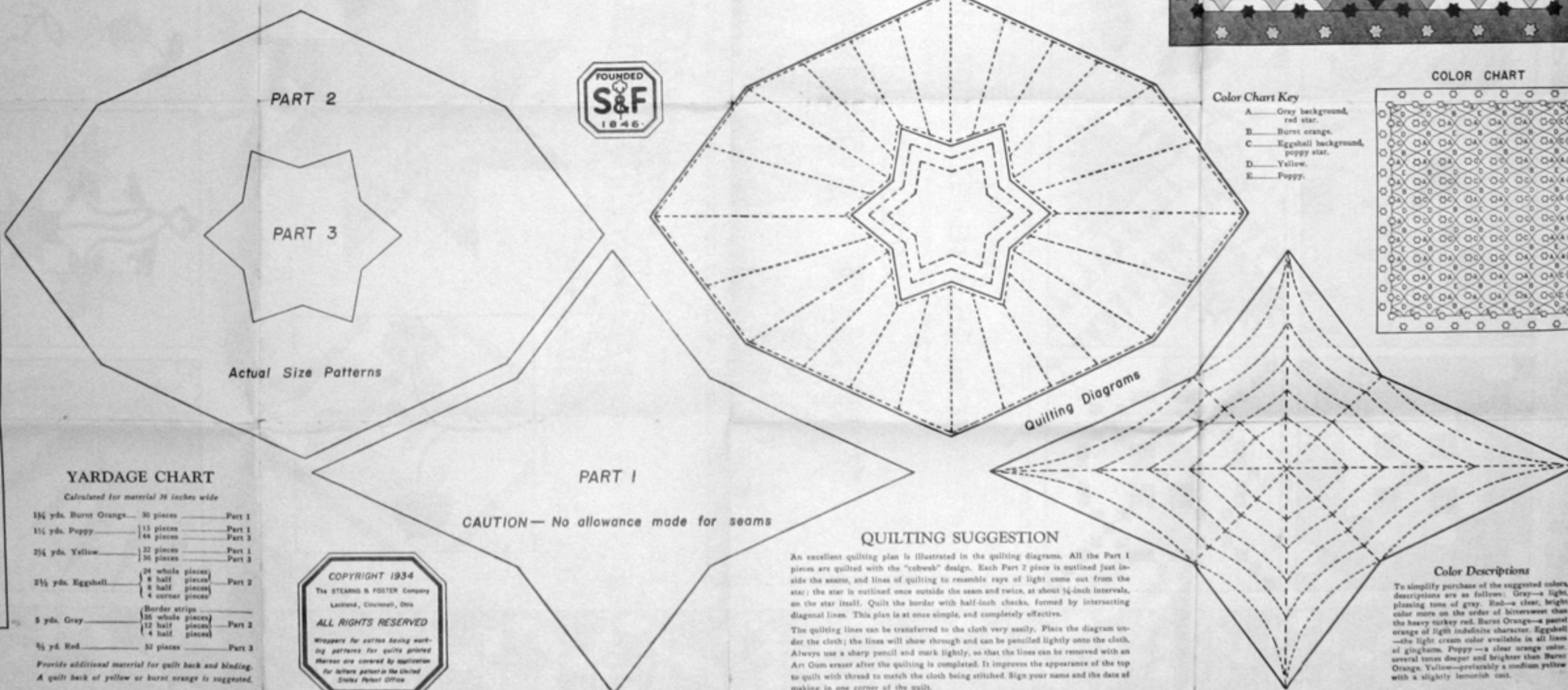
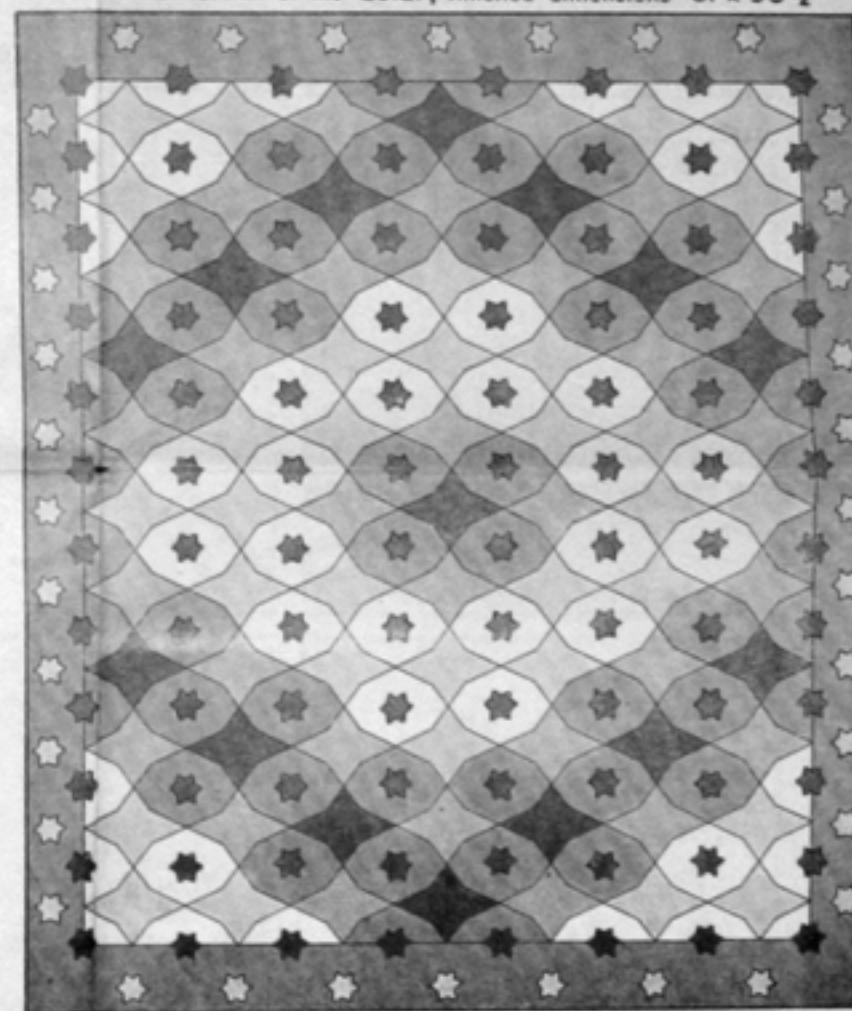
6. When all of Parts 1 and 2 have been pieced together to form the body of the quilt, the top should measure 70x82 1/2". The 5 1/2-inch border strips are then attached along the sides, and the 6 1/2-inch strips across the top and bottom; mitre the corners. The finished top measures 81x95 1/2".
7. The two outer rows of stars are now basted into position and applique. Note that all these stars are in the same position (pointing the same way) as the stars on the main portion of the quilt. The row of stars along the seam, half on the quilt and half on the border, follows the color chart; that is, each gray half Part 2, takes a bittersweet star, and the corners (eggshell) have poppy color stars—a total of sixteen bittersweet and twenty poppy stars on the border seams.

All the stars in the outer row are yellow. They are placed directly opposite the point of Part 1. On the narrow (side) border strips, they are placed with the star point 1/2-inch from the edge of the border (allow an additional 1/4-inch to come off for border seam). On the wider (end) borders, the star points are placed 1-inch from the edge. Applique with yellow thread.

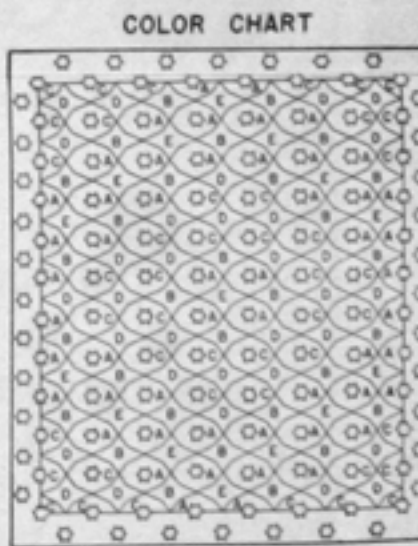
8. The final step is the quilting. This includes fixing the quilt back to the quilting frame, laying on the Mountain Mist Quilting Cotton and the quilt top, stretching and fastening the entire quilt, marking and stitching the quilting design (see Quilting Suggestion), and binding the edges of the quilt. The gray color is a good choice for the binding, since it is dark and will not soil quickly.

If you have no quilting frame, use the Mountain Mist Quilting Hoop. It is strong, durable, and practical for quilting large or small quilts. This twenty-inch aluminum and steel hoop has been subjected to rigorous tests and found to be thoroughly efficient. It stretches all three layers, top, filling and quilt back, evenly and without a wrinkle. Easy to handle and convenient to carry about; sold by your dealer, or write us direct.

DIAGRAM of the QUILT, finished dimensions 81 x 95 1/2"



**Color Chart Key**  
 A. Gray background, red star.  
 B. Burnt orange.  
 C. Eggshell background, poppy star.  
 D. Yellow.  
 E. Poppy.



**Color Descriptions**  
 To simplify purchase of the suggested colors, descriptions are as follows: Gray—a light, pleasing tone of gray. Red—a clear, bright color more on the order of bittersweet than the heavy turkey red. Burnt Orange—a pastel orange of light indefinite character. Eggshell—the light cream color available in all lines of ginghams. Poppy—a clear orange color, several tones deeper and brighter than Burnt Orange. Yellow—preferably a medium yellow with a slightly lemonish cast.

## How to Obtain PATTERNS AND THE FILLING for YOUR QUILT

The regular price for each Mountain Mist quilt pattern is twenty-five cents. However, patterns can be ordered at the special price of only ten cents each if you Mountain Mist "Pattern Coupon" accompanies the order. This "Pattern Coupon" is printed on the wrapper that comes around each set of Mountain Mist Quilting Cotton. Only one coupon need be sent with an order; plus ten cents for each pattern wanted. The price of each pattern is twenty-five cents if the coupon is not sent with each order. Order the patterns by name or number.

## A Free Pattern

When you buy Mountain Mist Quilting Cotton of a local store, you will find one of our latest quilt patterns printed on the back of the wrapper. Before placing a newly designed pattern on our list for sale, it is first used as the "free pattern". Thus, all Mountain Mist patterns published since all our lines offered free on the wrapper of the Quilting Cotton.

Mountain Mist Quilt Patterns are designed, published and distributed by mail direct to quilt makers by The Stearns and Foster Company. The patterns shown are not sold in stores nor through agents.

## MOUNTAIN MIST Quilting Cotton "The Perfect Filling for Quilts"

It comes to you in a roll weighing approximately 1 1/3 pounds. The pure white cotton is in a single sheet 81 by 96 inches—the standard size for a large quilt.

Mountain Mist is the correct weight and thickness recommended by expert quilters. To preserve the perfect even thickness and at the same time permit the cotton to be spread smoothly and evenly with out stretching the both sides are treated with "Glosser". "Glosser" is a soft, non-toxic, non-staining covering that is an exclusive Mountain Mist feature. As the cotton is washed and unfolded, "Glosser" prevents the surface from sticking to one another. The cotton handles easily and quickly like a piece of cloth. It does not set for one day to the quilting, as it is a simple matter to adjust and fit it properly. The quilting of a quilt filled with this superior cotton will pull out and be even more beautiful after it is washed.

## Where to Buy MOUNTAIN MIST

It is sold by Dry Goods and Department Stores throughout the United States. If your local store does not have it for sale, obtain it directly from a nearby wholesaler. Mountain Mist is carried in stock for retailers by over one hundred wholesale distributors scattered over the country. Write to the Mountain Mist branch—its name and no other name. Do not risk the most important part of your quilt by accepting a substitute as being "the same thing" or "just as good". If your merchant will not order it for you, write us.

## for Extra Large Quilts

Mountain Mist is easily spread for extra large quilts. Due to the "Glosser" on both surfaces the thickness may be easily split in half. Split the thickness about an inch back from the edges of both pieces to be placed. Then cut away half of the thickness of both pieces about three-quarters of an inch from the edge. Then lay the two half thicknesses over one another. The seam that made will tend to stick together but some quilters prefer to leave it in long stitches. The advantage of this method is that the seam is the same thickness as the rest of the cotton as it does not interfere with the quilting.

## Washing a Quilt

Any quilt that is filled with Mountain Mist Quilting Cotton and properly quilted (the rows of quilting not more than two inches apart), may be readily washed. There is just one precaution and that is not to compress the cotton while it is wet. Avoid wringing and wringing. Allow the water to drain off gently and hang it over a line to drip dry.

THE STEARNS & FOSTER CO.  
 LOCKLAND, CINCINNATI, O.

## YARDAGE CHART

Calculated for material 36 inches wide

1 3/4 yds. Burnt Orange	30 pieces	Part 1
1 1/2 yds. Poppy	15 pieces	Part 1
	44 pieces	Part 2
2 5/8 yds. Yellow	32 pieces	Part 1
	36 pieces	Part 3
2 1/2 yds. Eggshell	24 whole pieces	Part 2
	8 half pieces	
	4 corner pieces	
	Border strips	
5 yds. Gray	36 whole pieces	Part 2
	12 half pieces	
	4 half pieces	
5 1/2 yd. Red	32 pieces	Part 3

Provide additional material for quilt back and binding. A quilt back of yellow or burnt orange is suggested.

