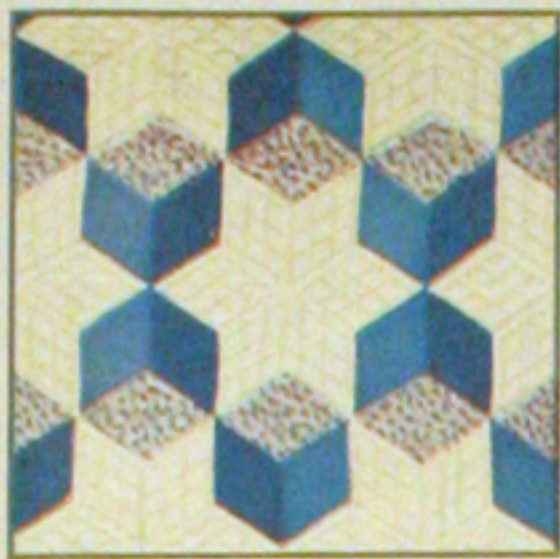




74-FLORAL CAMEO



A-TUMBLING BLOCKS



24-DANCING DAFFODILS



70-STAR BRIGHT



39-POINSETTIA



47-WATER LILIES



28-MARTHA'S VINEYARD



34-HONESPIN



P-SUNFLOWER



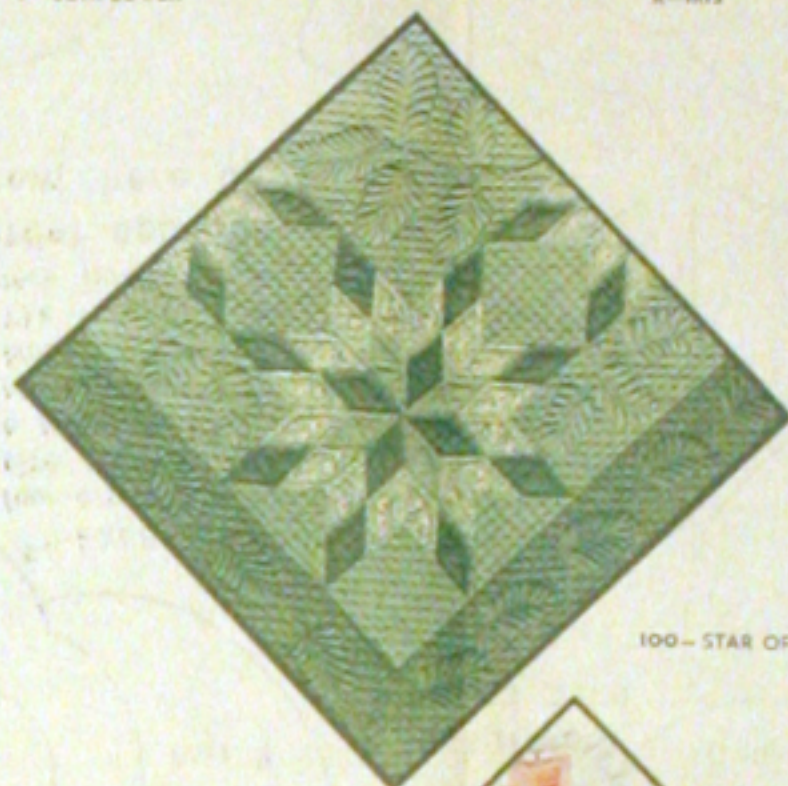
8-IRIS



31-DOUBLE WEDDING RING



F-THE LONE STAR



100-STAR OF BLUEGRASS



80-APPLE BLOSSOMS



83-COUNTRY GARDENS

Save **THE QUILT PATTERN** which is printed on reverse side of this wrapper. You may obtain the pattern for any quilt design illustrated by using the coupon which is printed in the lower right-hand corner of this wrapper.

1 lb. 3 oz.

ONE SEAMLESS SHEET

FULL QUILT SIZE - 81 BY 96 INCHES

MOUNTAIN MIST

REG. U.S. PAT. OFF. AND IN CANADA

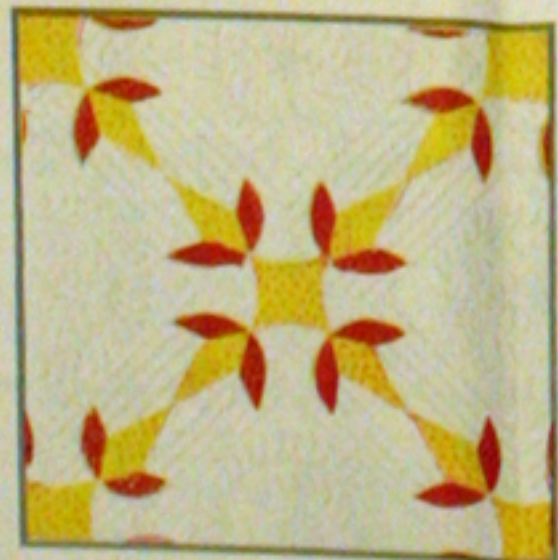
NEEDLE-EASY "GLAZENE" FILLING for QUILTS

Uniform in Thickness • Does Not Stretch Thin • Makes a Quilt That Will Wash Beautifully

THE STEARNS & FOSTER COMPANY
LOCKLAND, CINCINNATI, OHIO

FORM 106
© 1954 S & F CO.
LITHO IN U.S.A.

Guaranteed by the Manufacturer
100% NEW S & F MATERIAL
OHIO REGISTRY No. 52



23-TURKEY TRACKS



4-NEW YORK BEAUTY



19-DOGWOOD



30-BOSTON COMMONS



64-COUNTRY LAKES



93-SPRING WREATH



30-OHIO ROSE



75-DRESDEN PLATE



76-DAISY CHAIN



31-POMEGRANATE

419 N. High Street © 1954

HOLLYHOCKS

Pattern Number 49 of the Mountain Mist Series
An Applique Quilt

Hollyhocks, tall sentinels of the old fashioned garden, have again returned to favor. Quaint and colorful, they bloom profusely along many a modern garden wall. Their tall stalks make them especially adaptable for a quilt design.

Arranged as shown in the finished diagram, this quilt is easy to make and strikingly effective. The long stalks are appliqued to strips of white goods, changing to dark blue background at the bottom of the stalks to give the effect of a border. The narrow cross strips are pieced of one-inch strips of light and dark blue. The background blocks are ten-inch yellow squares. For side borders, the tips of the stalks are appliqued to oblong yellow blocks. The blossoms alternate three color arrangements, the flowers on any one stalk being either in three shades of pink, three shades of lavender, or the orange-yellow combination. The pattern calls for four long stalks of pink, and two each of lavender and orange-yellow. Looking at the quilt diagram, the four lower stalks, left to right, are: pink, lavender, orange-yellow, pink; the upper stalks (look-

ing at them upside down), are: pink, orange-yellow, lavender, pink. This brings the pink stalks opposite each other, the orange-yellow and the lavender alternated. On each of these eight stalks, the lowest flower has a white outer petal, for contrast against the dark blue.

For the tips of the stalks appliqued to the oblong yellow side blocks, pink, orange-yellow, lavender, pink, orange-yellow, lavender, are alternated regularly. The quilt is finished with a one-inch border of dark blue.

The Yardage Chart is based on this color plan. For the orange-yellow combination, Burnt Orange is considered the "light" shade, Yellow is "medium", and Poppy (deep orange) is the "dark" shade. Since real hollyhocks bloom in a wide variety of colors, any other harmonious color plan may be substituted if desired.

Actual size patterns for marking and placing the design are shown below. The stalk is shown in two sections, which, however, are to be made up continuously, dotted line on dotted line.

top proper, twenty-one strips cut $1\frac{1}{2} \times 10\frac{1}{2}$ ". These measurements allow for $\frac{1}{4}$ " seams.

From the light yellow material, cut twenty-four blocks $10\frac{1}{2}$ " square; and for the border, cut sixteen blocks $10\frac{1}{2} \times 13\frac{1}{2}$ ", thus allowing for $\frac{1}{4}$ " seams.

5. Now mark the required number of parts on each color of cloth, as listed on the Yardage Chart. Mark on the right side of the goods and space the outlines far enough apart to allow for seams ($\frac{1}{4}$ " or less) when the pieces are cut. (Do not cut along these lines.) Cut a seam's width outside the lines, which remain to show where to turn over the edges for basting.

Always mark the large pieces of any one color first. Mark eight of the three-quarter leaves with the pattern reversed (turned over), because the leaf appears in reverse position once on each stalk.

6. Cut out and collect all pieces in color and part groups, running a thread or a pin through each group for easy selection of pieces as the sewing proceeds.

7. Next locate the positions for the applique on the long white strips. Place each white strip in turn over the actual size diagram, starting with the lower edge of the goods $\frac{1}{4}$ " (seam allowance) below the point marked "white background begins here". Lightly pencil the lines as they show thru, shifting to the second part of the diagram to make a continuous long stalk. Place the stalk in the center of the strip. Mark all eight strips; or if you are working with four 72" strips, mark a stalk beginning at either end and coming within an inch-and-a-half of meeting tip to tip.

Also mark the lower ends of the stalks on the eight dark blue short strips. If the goods is too dark for the diagram lines to show thru, hold pattern and material against a window pane and mark as the light shows thru.

Also locate the positions of the stalk tips on the light yellow border blocks. Start outlining at the point marked "border applique from here up", omitting the half-open blossom at that point. Place the figure in the center of each block.

8. Join the wide blue strips to the ends of the white strips and baste the parts into position, fitting raw edges under seams to be whipped. Applique with thread of the same color as the cloth being sewed.

9. Set the top together, using the finished diagram as a guide. First piece together three long sections each composed of eight plain yellow squares alternated with joined light and dark blue cross strips. Each of these twenty-one cross strips is made up of one light and one dark blue strip pieced together. In joining yellow blocks and cross strips, note that the cross strips maintain the same color values throughout, light and dark in the same positions. When three of these sections running the length of the quilt have been pieced, set them together with the four long appliqued strips, colors arranged as explained at the beginning.

Next join the 10×13 " yellow side blocks to the side cross strips, the hollyhock colors arranged as explained previously. Join the border sections to the sides of the quilt, and finish around the whole top with a one-inch border of dark blue.

10. The final step is the quilting, which includes fixing the quilt back to the quilting frame, laying on the Mountain Mist Quilting Cotton and the quilt top, stretching and fastening the entire quilt, marking and stitching the quilting design (see Quilting Suggestion), and binding the edges of the quilt. Bind preferably in the dark blue; a light yellow or light blue quilt back is suggested.

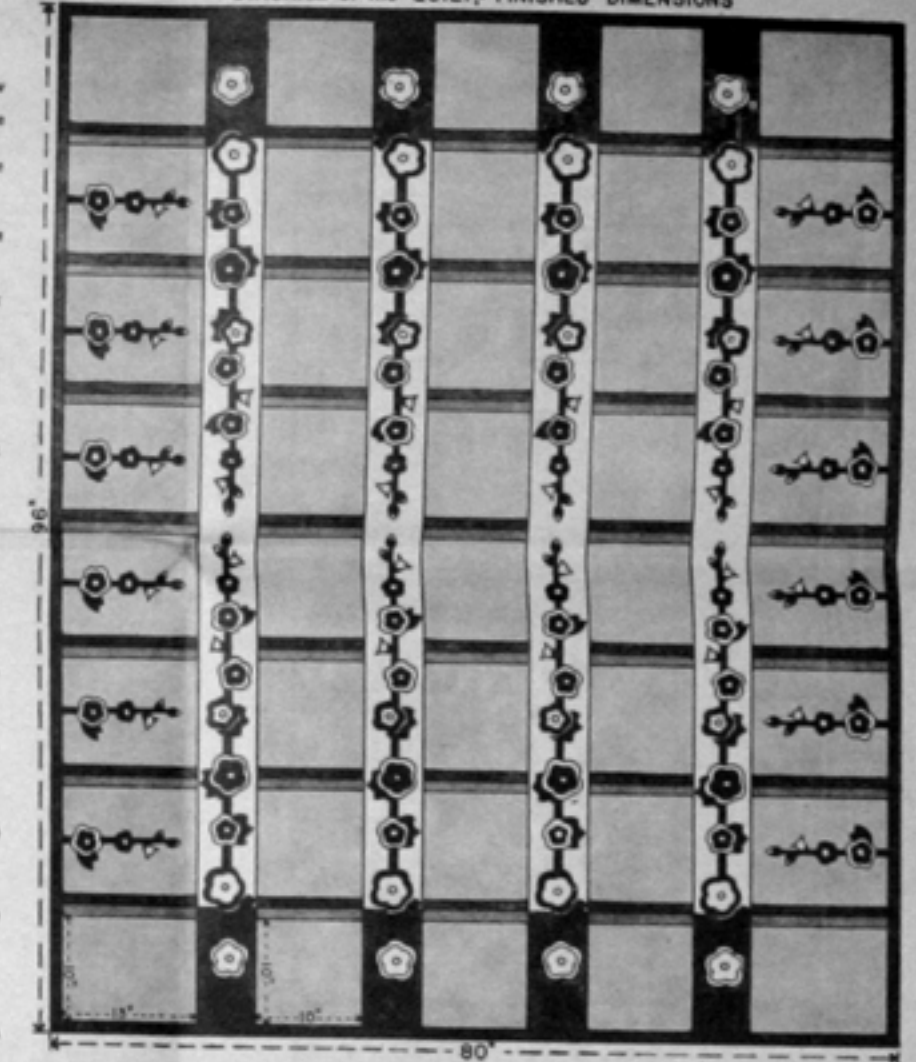
YARDAGE CHART

(Calculated for material 36" wide)

40 background blocks	4 $\frac{1}{4}$ " yds. Light Yellow
35 cross strips	$\frac{1}{4}$ yd. Light Blue
35 cross strips	$\frac{1}{4}$ yd. Dark Blue
4 border strips	$\frac{1}{4}$ yd. Dark Blue
8 background strips	$\frac{1}{4}$ yd. White
4 pieces of Part 1	$\frac{1}{2}$ yd. Light Pink
12 " " Part 2	" " " " " "
4 " " Part 3	" " " " " "
4 pieces of Part 1	$\frac{1}{2}$ yd. Medium Pink
16 " " Part 2	" " " " " "
12 " " Part 3	" " " " " "
4 pieces of Part 2	$\frac{1}{2}$ yd. Deep Pink
24 " " Part 3	" " " " " "
16 " " Part 4	" " " " " "
12 " " Part 5	" " " " " "
4 pieces of Part 2	$\frac{1}{2}$ yd. Helio (light)
6 " " Part 2	" " " " " "
2 " " Part 3	" " " " " "
2 pieces of Part 1	$\frac{1}{4}$ yd. Lavender (medium)
16 " " Part 2	" " " " " "
8 " " Part 5	" " " " " "
2 pieces of Part 2	$\frac{1}{4}$ yd. Lilac (dark)
16 " " Part 3	" " " " " "
12 " " Part 6	" " " " " "
2 pieces of Part 1	$\frac{1}{4}$ yd. Burnt Orange (light)
10 " " Part 2	" " " " " "
2 " " Part 3	" " " " " "
2 pieces of Part 1	$\frac{1}{4}$ yd. Yellow (medium)
6 " " Part 2	" " " " " "
88 " " Part 4	" " " " " "
8 " " Part 5	" " " " " "
2 pieces of Part 2	$\frac{1}{4}$ yd. Poppy (dark)
16 " " Part 3	" " " " " "
12 " " Part 6	" " " " " "
Stems	
32 pieces of Part 7	$\frac{1}{2}$ yd. Green
24 " " Part 8	" " " " " "
28 " " Part 9	" " " " " "
20 " " Part 10	" " " " " "
40 " " Part 11	" " " " " "

Provide additional material for quilt back and binding

DIAGRAM of the QUILT, FINISHED DIMENSIONS



QUILTING SUGGESTION

A quilting plan especially appropriate to this design is as follows:
Outline all the applique with quilting stitches; stitch veins on the leaves, the lines radiating from an imaginary center point at the base of each leaf. Also quilt along all seams on the blocks and strips joined together.
Outline the tall hollyhock stalks on the plain yellow blocks. To mark, place the quilt top over the diagram and lightly sketch the lines on the material with a sharp pencil. Thus, in each half of the quilt, there will be four appliqued and three quilted stalks. Allow the narrow cross strips to cross on top of the quilted stalks; that is, do not sketch the hollyhock figures on the cross strips, but allow them to disappear underneath, reappearing on the next yellow block. Place each quilt stalk in the center of the yellow space and exactly opposite the appliqued stalks. For greater emphasis of design, outline the figure with a double row of quilting.
On the narrow light and dark blue cross strips, quilt double diagonal lines; that is, mark two diagonal lines $\frac{1}{4}$ " apart, skip a space of $\frac{1}{2}$ " and repeat. This gives the cross strips an effect of length. Keep all these diagonals going in the same direction. Similarly quilt the one-inch outer blue border with double diagonals.
Fill in the remaining open spaces of the entire quilt background with small checks formed by intersecting diagonal lines. These checks, and the double diagonal lines on the cross strips, can easily be marked with pencil and ruler. Some quilters prefer to scratch the lines on the goods with a needle, to avoid lead marks. However, a sharp pencil is satisfactory, if used sparingly. Never leave unquilted spaces as large as two inches. Use thread to match the color of the cloth being quilted. Stitch your name and the date of making into one corner of the quilt. Any pencil lines remaining after the quilting is completed, can usually be removed with an Art Gum eraser.

DIRECTIONS:

1. First make actual size patterns for all eleven parts as numbered. To do this, trace the outlines thru thin paper, paste onto cardboard, or the smooth side of sandpaper, and cut out exactly along the penciled lines. Or, transfer directly with carbon paper. Sandpaper patterns, placed rough side down on the goods, will not slip in the marking.
Make only one pattern for each part. Use one of the two lowest half-leaves to make the pattern for Part 7, and also use the lowest three-quarter leaf on the big stalk to make the marker for Part 8. Make the markers for Parts 1 and 2 as solid pieces. The material is to be cut out in solid pieces; the parts to be overlaid by smaller pieces may be trimmed away after basting if desired.
2. If there is any doubt about the fastness of the color, or if there is a possibility of shrinkage, first wash and iron the cloth. If the top becomes soiled and is washed before quilting, also shrink the goods for the quilt back.
3. Before marking off the leaves on the green material, cut off the stem, or stalk, strips. Lay the goods over the stalk diagrams and

ACTUAL SIZE PATTERNS

no allowance made for seams

