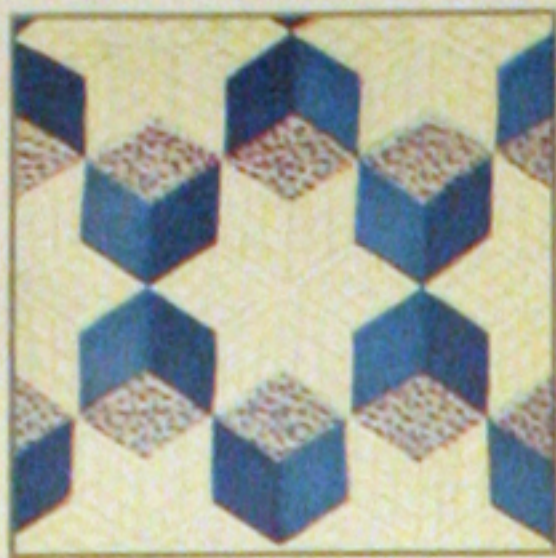




74 - FLORAL WREATH



4 - TUMBLING BLOCKS



34 - DANCING DAFFODILS



70 - STAR BRIGHT



39 - POINSETTIA



47 - WATER LILIES



28 - MARTHA'S VINEYARD



24 - HOMESPUN



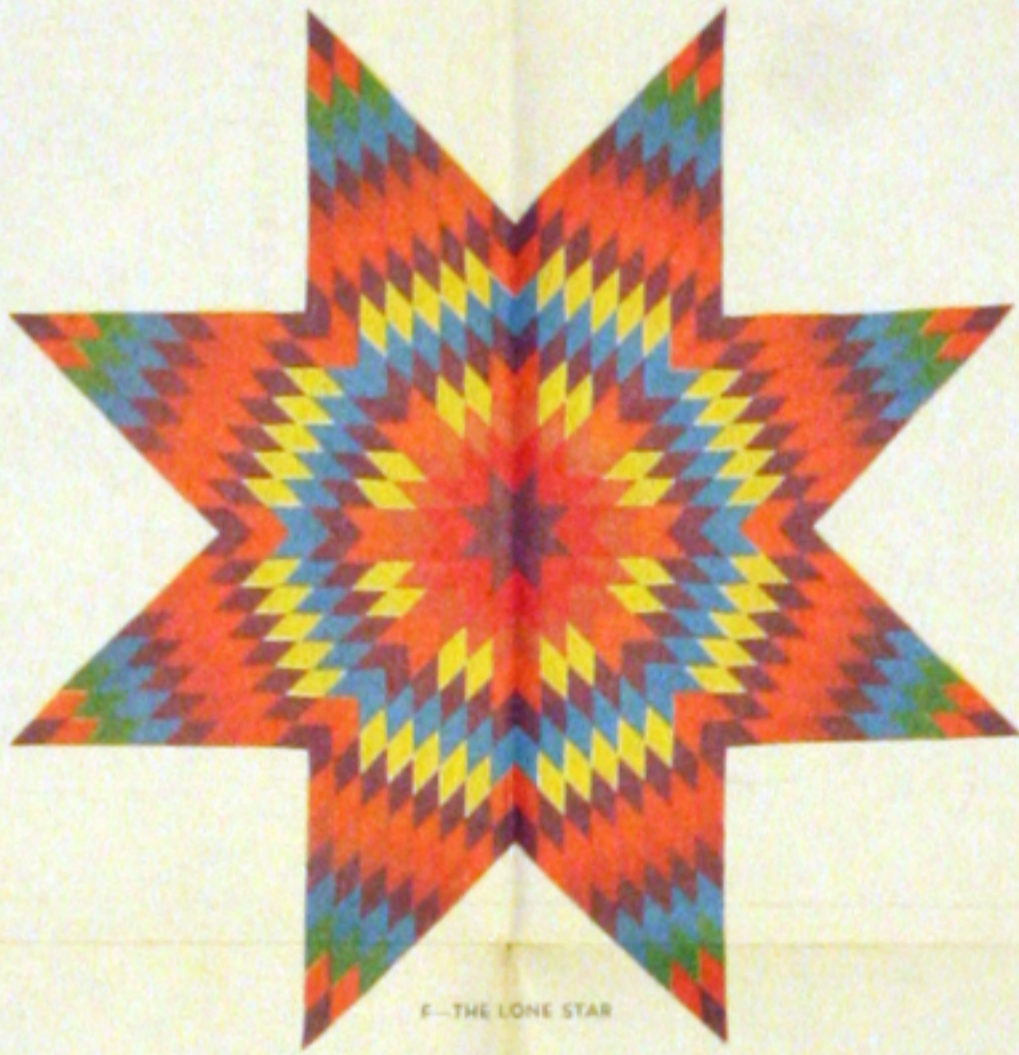
9 - SUNFLOWER



8 - IRIS



21 - DOUBLE WEDDING RING



6 - THE LONE STAR



100 - STAR OF BLUEGRASS



80 - APPLE BLOSSOMS



83 - COUNTRY GARDENS

Save THE QUILT PATTERN which is printed on reverse side of this wrapper. You may obtain the pattern for any quilt design illustrated by using the coupon which is printed in the lower right-hand corner of this wrapper.

1 lb. 3 oz.

ONE SEAMLESS SHEET

FULL QUILT SIZE - 81 BY 96 INCHES

MOUNTAIN MIST

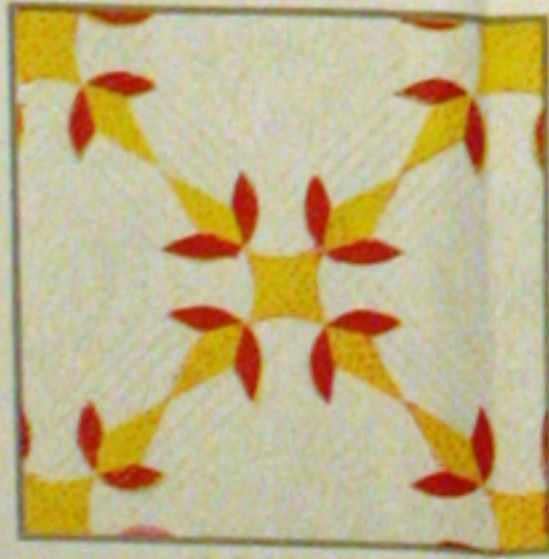
REG. U.S. PAT. OFF AND IN CANADA

NEEDLE-EASY "GLAZENE" FILLING for QUILTS

Uniform in Thickness • Does Not Stretch Thin • Makes a Quilt That Will Wash Beautifully

THE STEARNS & FOSTER COMPANY
LOCKLAND, CINCINNATI OHIO

Consistent by the Manufacturer
100% NEW S&F MATERIAL
OHIO REGISTRY No. 52



73 - TURKEY TRACKS



1 - NEW YORK BEAUTY



29 - HOGWOOD



30 - BOSTON COMMONS



64 - COUNTRY LANES



73 - Mountain Mist Quilt Pattern ©1954

THE THREE IRISH CHAINS

PIECED QUILTS

Pattern No. 73 of the Mountain Mist Series

IRISH CHAINS have always been popular. The reason, probably because the design is so simple, so light and cheery in appearance. Early American quilt makers liked these designs as it gave them an opportunity to use the many different pieces of prints which had been saved and hoarded in the family rag bag. Much sentiment was attached to those quilts, especially those that may have contained bits of cloth saved from the making of Mary's first party dress or Tommy's first Sunday shirt.

Irish Chain quilts, whether new or old, are always admired—the ones made in these times are perhaps the prettier. The quilt maker may now select from a wide range of attractive prints in almost every color and hue. We suggest white backgrounds with bright prints. In the single Irish Chain only one print is required and a very striking effect may be had by using a print of brilliant color. For the Double and Triple Chains use two different prints and these two prints may be of the same color in two shades or of contrasting colors. Select strong colors and avoid a washed out effect which will occur if you go to pastel shades.

DIRECTIONS

1. First make actual size patterns for the squares and oblong pieces to be used for marking the pieces. To do this, trace the outlines thru thin paper, paste onto cardboard, or the smooth side of sandpaper, and cut out exactly on the penciled lines; or, transfer directly with carbon paper. Make several patterns for the square, because there are many pieces to be marked. When the edges of one pattern become worn, a new pattern is at hand.
2. If there is any doubt about the color fastness, or if there is a possibility of shrinkage, first wash and iron the cloth. If the material for the top is washed, also shrink the goods for the back before quilting.
3. Following the Yardage Chart for whichever quilt you are making, mark the required number of pieces on each color of cloth, marking on the wrong side of the goods and spacing the outlines far enough apart to allow for narrow seams (1/4-inch or less). Do not cut along these lines; cut a seam's width outside them. To assure accurate, easy piecing, with no failures, always mark on the wrong side, directly around the actual size pattern; allow for seams by eye. The pieces can then be joined exactly along the pencil lines.
4. After all the pieces have been marked, cut out and arrange them in part and color groups. Run a thread loosely in and out each group, so that pieces can be detached as needed.

QUILTING

Simplicity of design is desirable in quilting a top which is so geometrically precise. Diagonal or straight lines spaced the width of the square make an effective design. If you should wish to make your quilt more elaborate we have given you suggestions on the actual size pieces. Stitches should be no fewer than 10 to the inch. They must penetrate through the three thicknesses—quilt top, Mountain Mist Cotton and quilt back. The border of the Single Chain given on this pattern is made of scallops the same width as the blocks. If a straight edge is preferred, the diagonal lines may be continued from the body of the quilt.

YARDAGE CHART

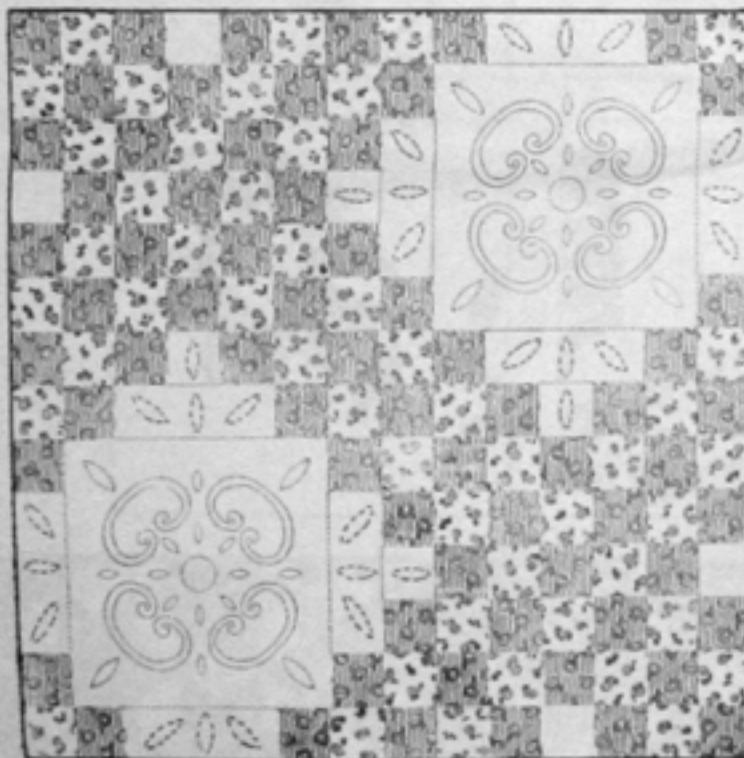
CALCULATED FOR MATERIAL 36 INCHES WIDE

SINGLE CHAIN	DOUBLE CHAIN	TRIPLE CHAIN
Print.....2 3/4 yds.	Light Print.....1 1/2 yds.	Light Print.....2 3/4 yds.
White.....5 yds.	Dark Print.....2 3/4 yds.	Dark Print.....3 1/2 yds.
White for back .7 yds.	White.....6 yds.	White.....5 yds.
	White for back .6 3/4 yds.	White for back .5 3/4 yds.

NOTICE

COPYRIGHT, 1939—The Stearns & Foster Co., Lockland, Cincinnati, Ohio. ALL RIGHTS RESERVED. All wrappers for batting having working patterns for quilts printed thereon are fully protected and are exclusive with The Stearns & Foster Company.

ARRANGEMENT OF BLOCK (Triple Chain)



PART No. 2
Triple Chain
(actual size)

PART No. 3
Triple Chain
(actual size)

NUMBER OF PIECES REQUIRED FOR EACH PART

SINGLE IRISH CHAIN		TRIPLE IRISH CHAIN	
Part 1— 31 pieces—white	Part 5—640 pieces—white	Part 1— 31 pieces—white	Part 5—1048 pieces—dark print
Part 2—128 pieces—white	Part 5—800 pieces—print	Part 2—124 pieces—white	
		Part 3—200 pieces—white	
		Part 4—450 pieces—light print	
		Part 5—796 pieces—dark print	

PART No. 2
Double Chain
(actual size)

PART No. 3
Double Chain
(actual size)

PART No. 2
Single Chain
(actual size)

PART No. 3
Single Chain
(actual size)



ARRANGEMENT OF BLOCK (Single Chain)

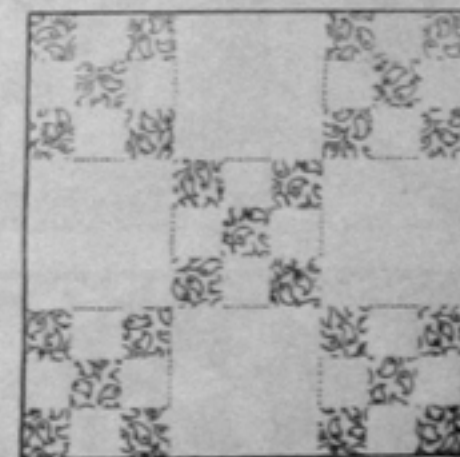
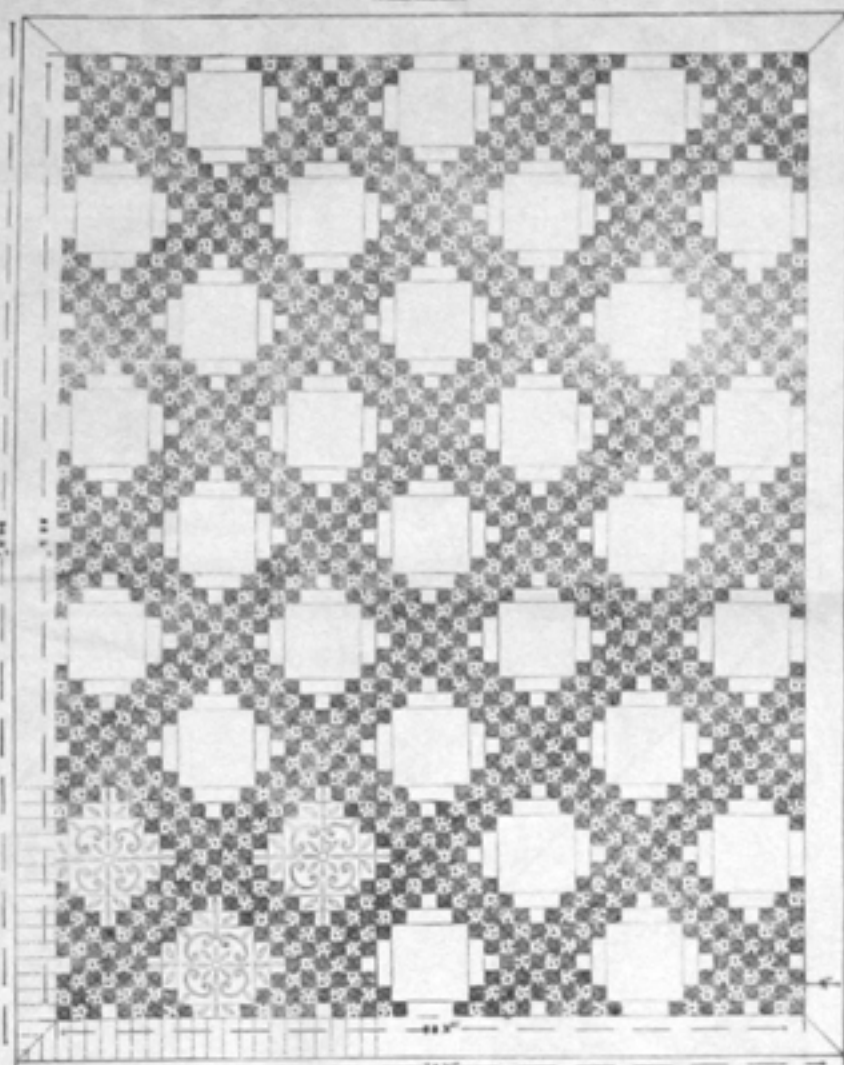
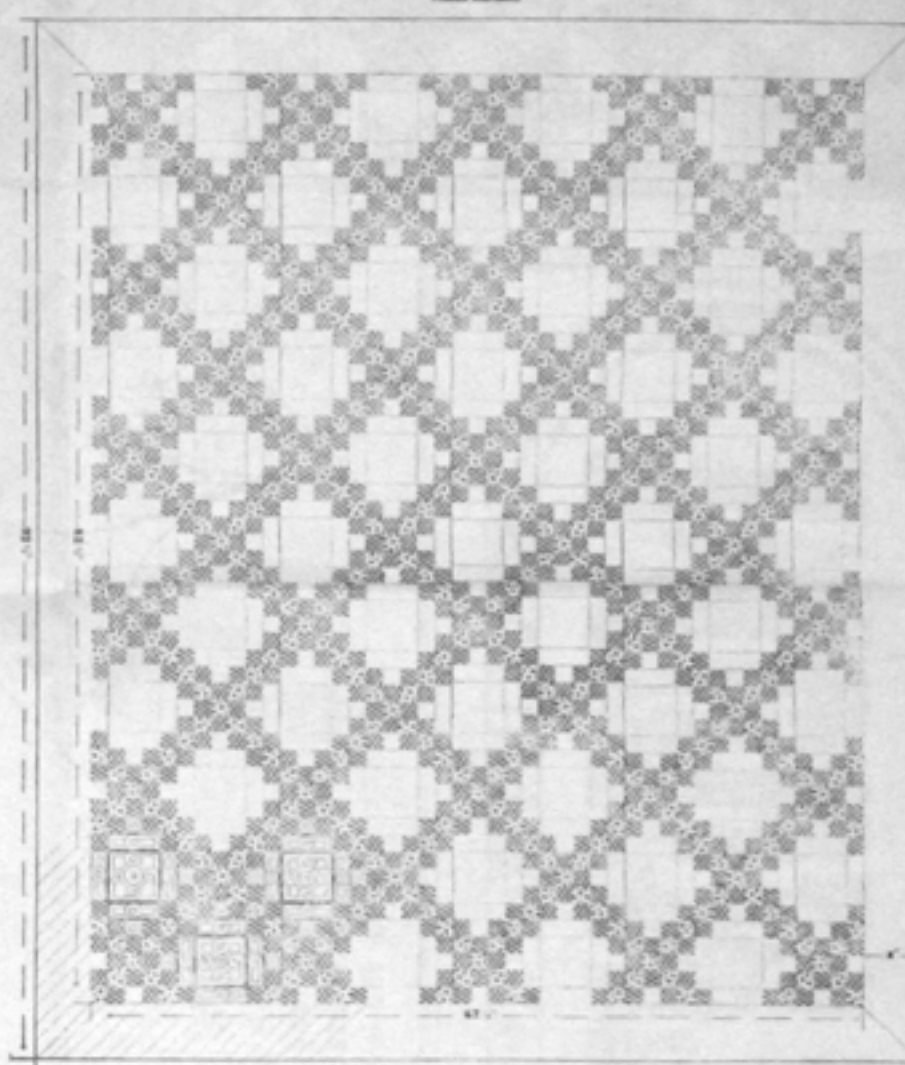


DIAGRAM of the TRIPLE IRISH CHAIN



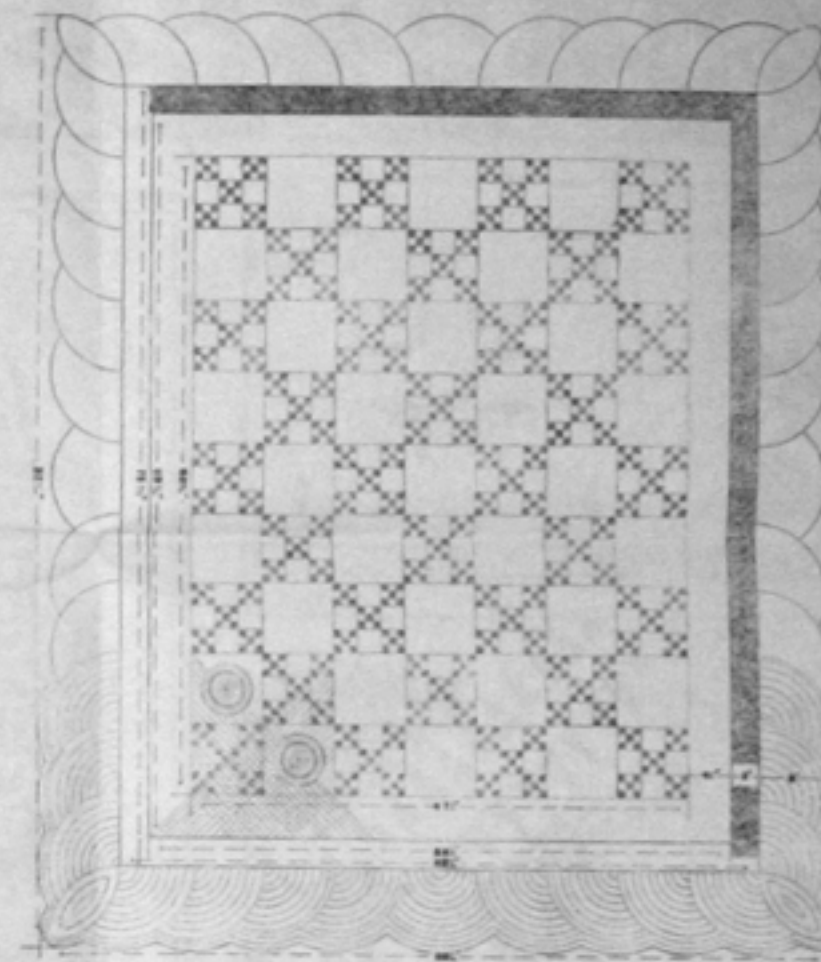
NO ALLOWANCE MADE for SEAMS

DIAGRAM of the DOUBLE IRISH CHAIN



NO ALLOWANCE MADE for SEAMS

DIAGRAM of the SINGLE IRISH CHAIN

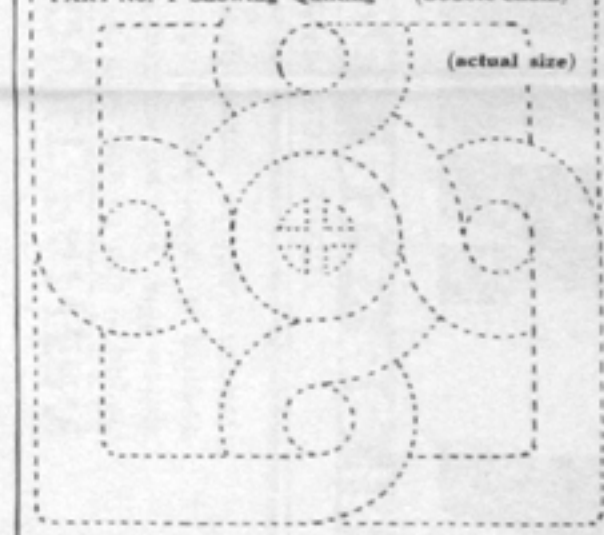


NO ALLOWANCE MADE for SEAMS

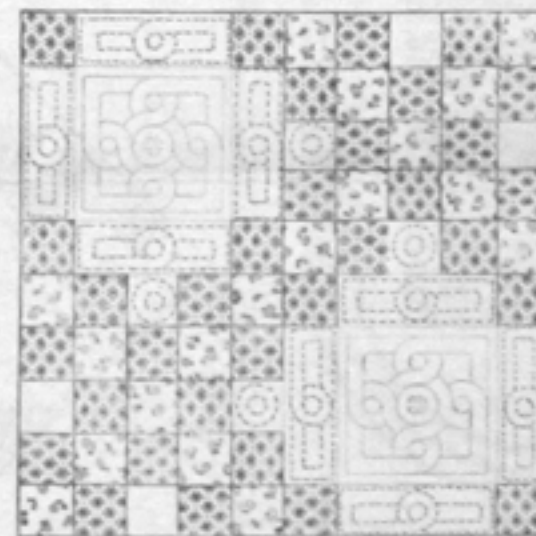
PART No. 1 Showing Quilting (Triple Chain) (actual size)



PART No. 1 Showing Quilting (Double Chain) (actual size)



ARRANGEMENT OF BLOCK (Double Chain)



PART No. 1 Showing Quilting (Single Chain) (actual size)

