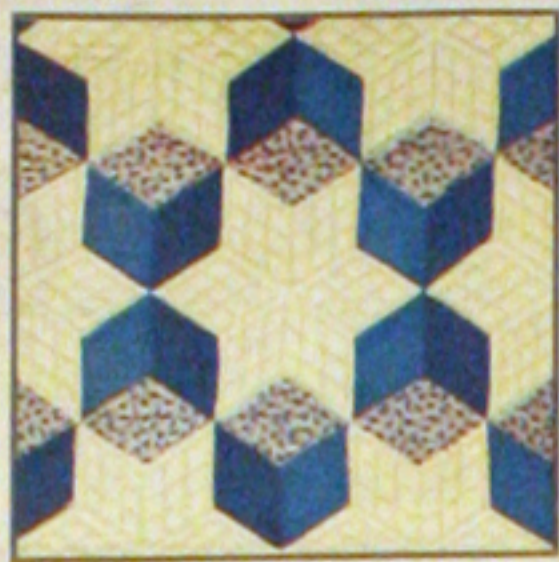




74—FLORAL CAMEO



A—TUMBLING BLOCKS



102—DEW DROP



70—STAR BRIGHT



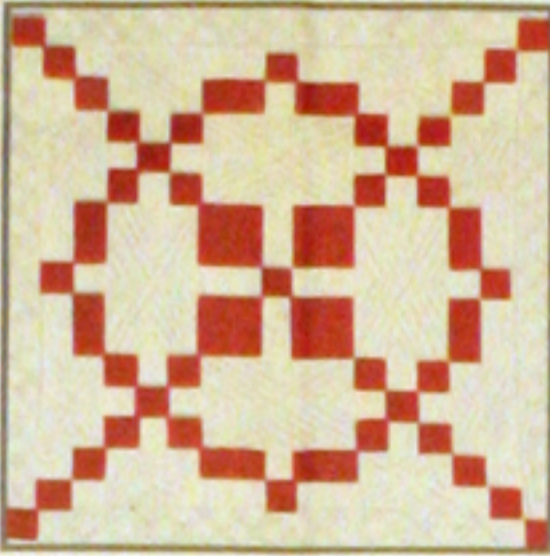
39—POINSETTIA



47—WATER LILIES



28—MARTHA'S VINEYARD



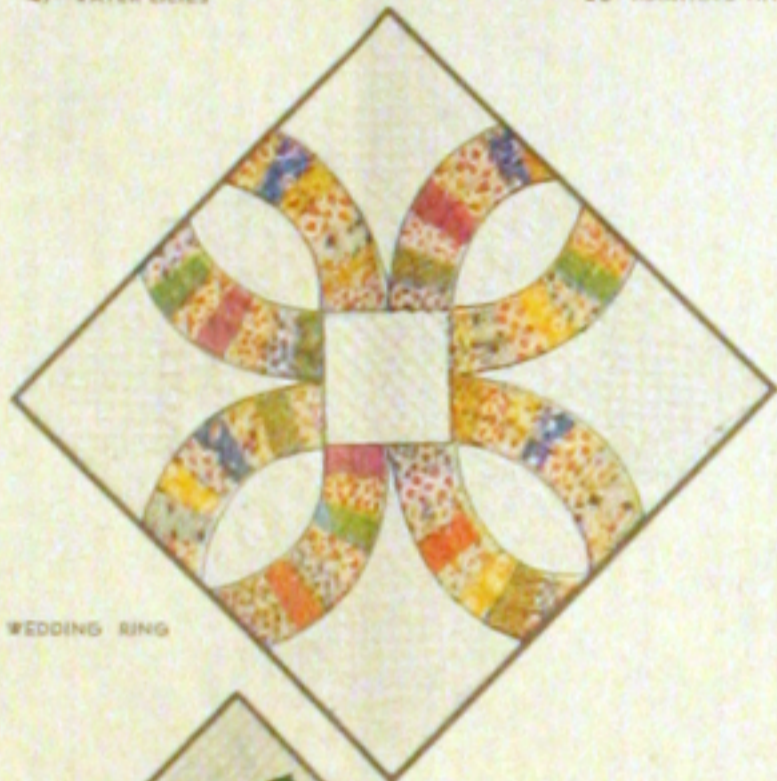
34—HOMESPUN



P—SUNFLOWER



8—IRIS



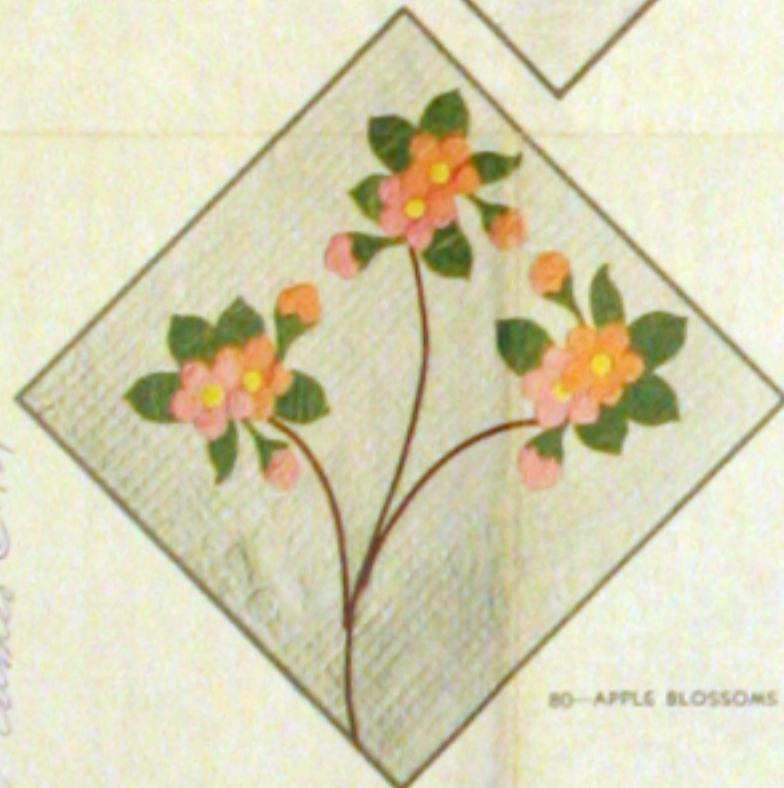
31—DOUBLE WEDDING RING



F—THE LONE STAR



100—STAR OF BLUEGRASS



80—APPLE BLOSSOMS

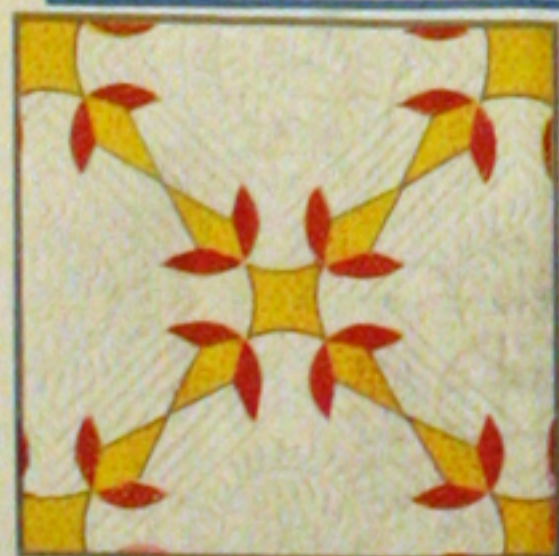


83—COUNTRY GARDENS

Save **THE QUILT PATTERN** which is printed on reverse side of this wrapper. You may obtain the pattern for any quilt design illustrated by using the coupon which is printed in the lower right-hand corner of this wrapper.

1 lb. 5 oz.

ONE SEAMLESS SHEET
EXTRA LARGE SIZE - 81 BY 108 INCHES
MOUNTAIN MIST
 REG. U.S. PAT. OFF. AND IN CANADA
NEEDLE-EASY "GLAZENE" FILLING for QUILTS
Uniform in Thickness • Does Not Stretch Thin • Makes a Quilt That Will Wash Beautifully
THE STEARNS & FOSTER COMPANY LOCKLAND, CINCINNATI OHIO
 ALL COTTON
 100% NEW (SAF) MATERIAL
 OHIO REGISTRY No. 52



23—TURKEY TRACKS



X—NEW YORK BEAUTY



39—DOGWOOD



30—BOSTON COMMONS



64—COUNTRY LANES



#74 Floral Cameo ©1957

DIAGRAM No. 1
DIAGRAM OF THE QUILT—FINISHED DIMENSIONS

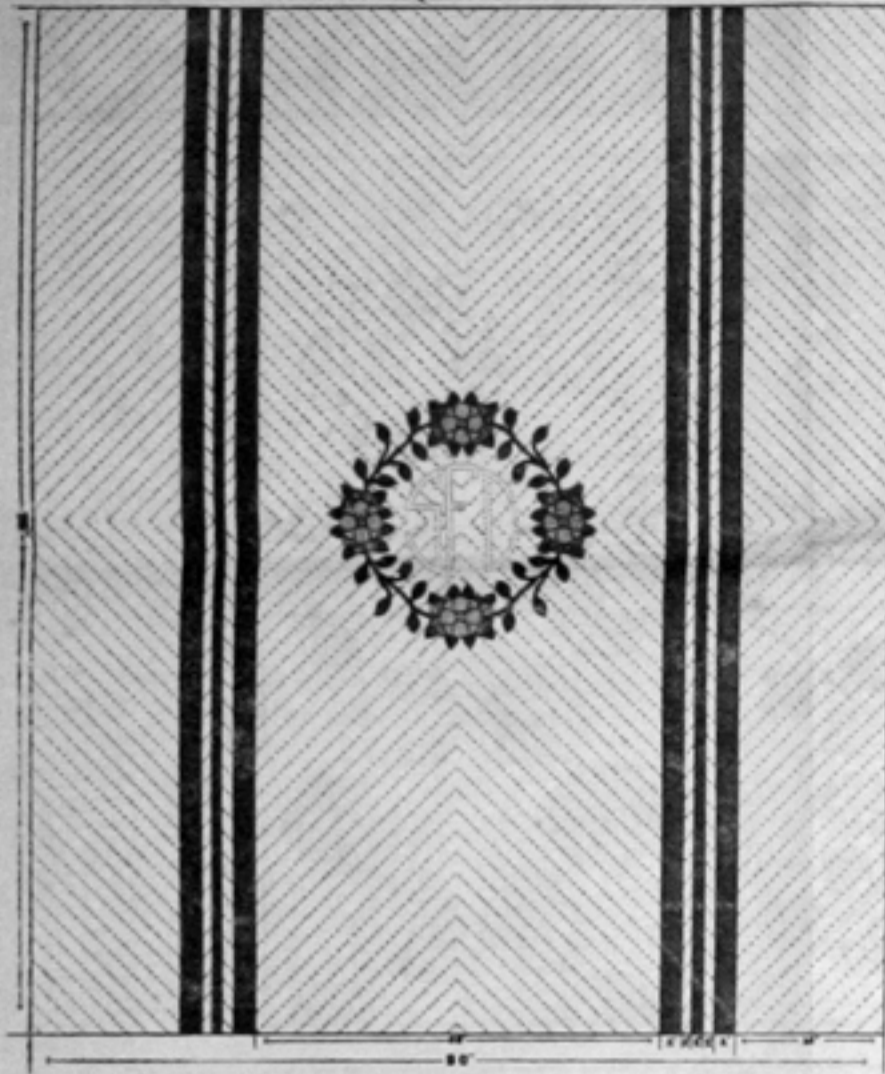


DIAGRAM No. 1

Yardage and Number of Pieces Required
(Material 36 inches wide)

Light Pink Material.....7 inches	Green Material.....13½ yards
Part No. 1.....16 pieces	*Parts No. 15 through 22: 4 pieces each
Part No. 2.....16 pieces	*Parts No. 26 through 32: 4 pieces each
*Part No. 25.....4 pieces	8 strips 2" x 48"
Dark Pink Material.....7 inches	4 strips 1" x 48"
Parts No. 3 through 14.....4 pieces each	White Material.....8½ yards
*Part No. 24.....4 pieces	4 strips 22" x 48"
Yellow Material.....5 inches	4 strips 18" x 48"
Part No. 25.....4 pieces	Material for Back—White.....8½ yards

*One half of these pieces are cut as shown and the other half are reversed.

FLORAL CAMEO

Pattern No. 74 of the Mountain Mist Series
An Applique Quilt

FRIENDSHIP quilts were made in our great-grandmothers' day by quilting or embroidering a name on the pieces of the quilt. On many antique quilts you will find the name of the maker worked into the design in some way. Now we have the modern idea of making your quilt more personal. We suggest a monogram.

This lovely quilt may be as elaborate or as simple as you desire to make it. We give you a diagram of the simple wreath with only green stripes to form a frame, a quilt for modern furnishings. If your bedroom is furnished with lovely antiques, we give you a quilt which would be at home in such a setting. Certainly either quilt will make a perfect gift or an heirloom for your grandchildren.

DIRECTIONS

1. First make actual size patterns for all parts, being sure to note those which are to be reversed as listed on the yardage chart. To do this, trace the outlines through this paper, paste onto cardboard or the smooth side of sandpaper, and cut out exactly along the penciled lines. Or transfer directly with carbon paper. Sandpaper patterns, placed rough side down on the goods, will not slip in the marking. Mark the part number on each pattern.

Observe that the patterns for the different petals and leaves are similar, starting with the center petals. All petals may be cut from the same pattern and then fitted together if so desired. This will take more material, however, and we suggest that a pattern is made for each part to insure accuracy. No pieces need be cut for part 25 since it would be better made from bias strips. However the outline of the stem should be traced from the pattern onto the background so as to have a line to follow in applying the bias stem.

2. If there is any doubt about the fastness of the color or if there is a possibility of shrinkage, first wash and iron the cloth. If the top is washed before quilting, also shrink the goods for the quilt back.

3. Before marking off the bias strips for the curves in the border of Diagram No. 2 and for the stems in the wreaths, cut the narrow border strips. These will be—4 each 1 x 48, 4 each 1 x 40, 4 each 1 x 22 and 4 each 1 x 50, plus allowance for seams. Two of the 48 inch will make one side of the outside border, two of the 40 inch will make one side of the top and bottom outside border. In the same way two of the 22 inch will make the side of the inside border and two of the 50 inch will make the other side of the inside border. These pieces may be whipped on the quilt top after the center and border pieces are joined. From the remainder of the green material cut the pieces for the leaves and stems. In the same manner on Diagram No. 1 cut the long strips before cutting the pieces. Cut all bias strips twice the size used.

4. Now mark the required number of pieces on each color of cloth as listed on the Yardage Chart. Mark on the right side of the goods and space the outlines far enough apart to allow for seams (¼" or less) when the pieces are cut. Do not cut along these lines. Cut a seam's width outside the lines, which remain to show where to turn under the edges for basting.

As listed on the Yardage Chart, a number of pieces must be cut with the pattern reversed. The stem and leaves parts are identical but reversed to form the circle. This makes it necessary to reverse (turn over) the pattern in marking even if there is no right and wrong side to the goods, this reversal puts the pencil lines on the right side of the material for turning the seam.

In marking the petals, if you wish to preserve some uniformity in the flowers, mark each petal on the goods in approximately the same position as pictured in the diagram.

5. Cut out and arrange all pieces of each part in color groups, and prepare to pin and baste the pieces into position on the background blocks. The central block of the quilt of Diagram No. 2 is made up of the four strips which measure 22" x 50". On this is applied the wreath as shown in the diagram. It would be well to use the point at which the seams meet as a center and draw a circle 9½" in radius or 19" in diameter. The groups of flowers will then be applied at the four points at which the seams cut the circle. The center of the yellow piece falls exactly on this point. The stem forming the wreath will then follow the circle between the four bunches of flowers. The "part wreaths" which are placed in each corner of the center block should be placed an equal distance from the sides of the block about 8 inches from the corner. The curves which are applied on the borders are part of a circle 25 inches in radius. We suggest that a semicircle be drawn on a large sheet of wrapping paper with string of that length, using a pin at the center and a pencil at the other end of the string. From this semicircle cut an arc 7½ inches deep to be used as a pattern to mark the background. The bias strips will follow these lines.

The same method of applying the central panel of the quilt shown in Diagram No. 2 may be used for Diagram No. 1. In the latter the central panel is made of the 4 strips 22" x 48". The center of the quilt will fall at the intersection of the seams. This is the point to be used in drawing the guiding circle of the wreath. The border strips may then be added and the green stripes used to finish the quilt.

6. In basting and applying, save the making of a seam wherever possible by fitting raw edges under seams to be whipped. Fold the bias stem edges under until they meet on the wrong side.

7. The final step is the quilting, which includes marking the quilting design on the top, fitting the quilt back to the frame, laying on the Mountain Mist Quilting Cotton and the quilt top, stretching and fastening the entire quilt and stitching the quilting design (see quilting directions). Then bind the edges of the quilt. In Diagram No. 1 the binding is white. In Diagram No. 2 it is green.

QUILTING DIRECTIONS

Since the quilt indicated by Diagram No. 1 is outstanding because of its simplicity, the quilting should in no way detract from the effect already made. Diagonal lines drawn to the center will enhance the importance of the monogram. These lines should not be more than one inch apart, but may be closer if desired. ½" is the best width. Draw the lines on the quilt top, using a ruler and a well sharpened soft pencil. These lines must be absolutely straight and parallel. They may be creased with art gum when the quilting has been completed.

In Diagram No. 2 the quilting may be more elaborate. We suggest that the wreath will be made to stand out more favorably if the quilting follows the circle already made by it as shown in the diagram. The flowers may be quilted in at intervals indicated to add to the beauty of the quilting. The pattern may be traced from the actual size patterns from which the parts are made.

We also suggest that each part which is applied be quilted just inside the outside edge. This will give you a lovely back to your quilt.

MONOGRAM

We have included on this pattern a chart of the alphabet showing each letter as it will look in each position. Use the initial of your monogram as we have indicated in the diagrams—SFC—the first S, the second F and the third C. The monogram is 11" in diameter. The initials may be applied in the color which you wish to emphasize. They may also be quilted in the color thread of one of the colors used for the applique of the pieces. If the initials are quilted in they may be made to stand out by using padding.

There are two methods of procedure in padding: The first method is used after the top is finished and before the bottom and lining are added. Take a piece of chamois or any other loosely woven material, cut roughly in the shape of the area to be padded, and baste the piece behind this area on the underside. Secure it by tiny running stitches following each line of the initial. From the underside, stuff cotton through the loosely woven material. After all the padding is done in this manner, add the quilting cotton and the lining and put the quilt into the frame to be quilted in the usual way. The areas that have been padded will show up on the quilt back as unquilted space.

The second method can be used after the regular quilting is finished. Being careful not to break the threads, and using a small steel knitting needle, make an opening in the quilt back behind the area to be stuffed. Stuff the cotton through the opening with a crochet hook.

DIAGRAM No. 2
DIAGRAM OF THE QUILT—FINISHED DIMENSIONS

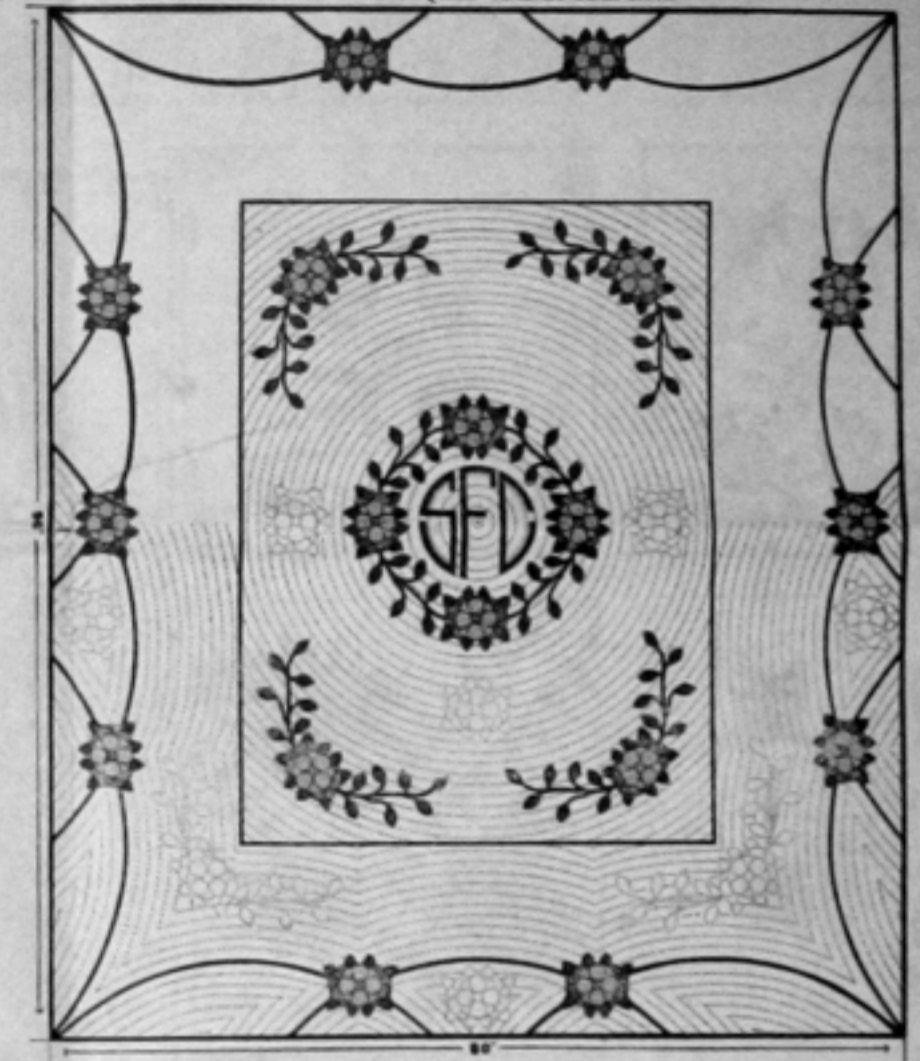


DIAGRAM No. 2

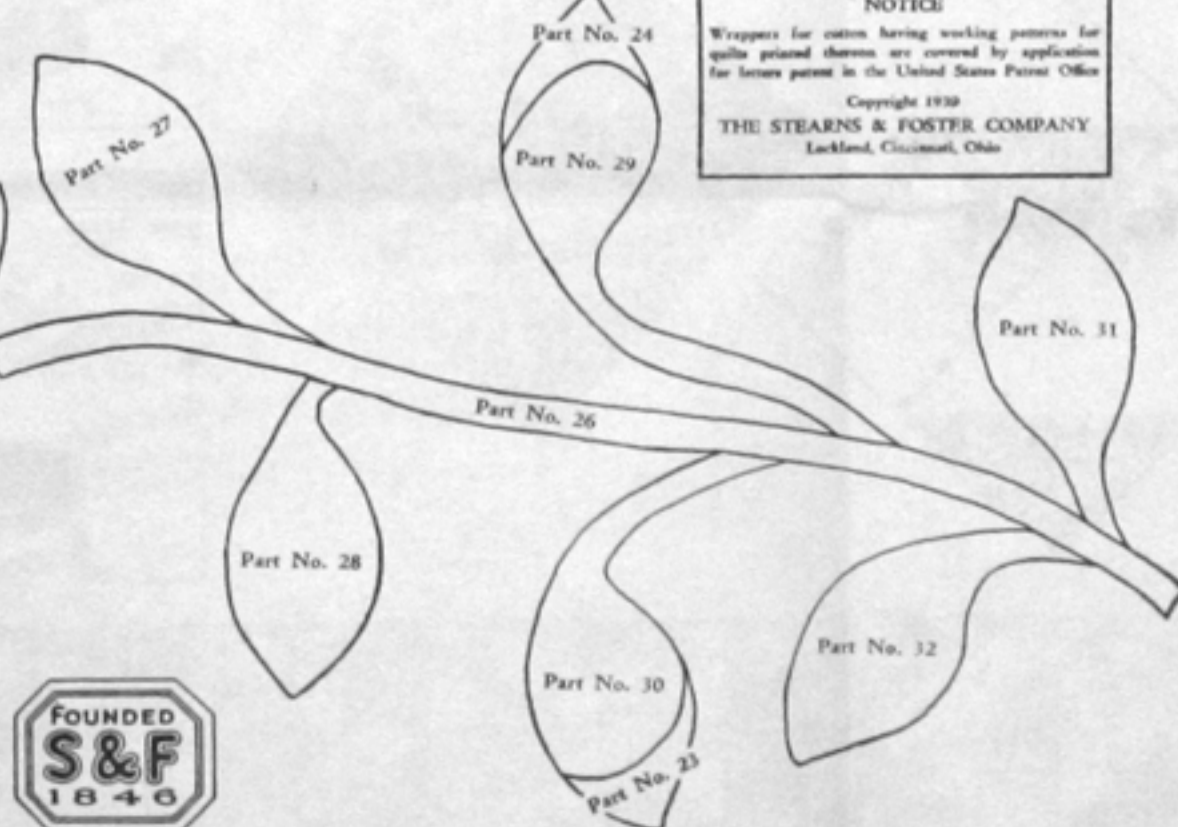
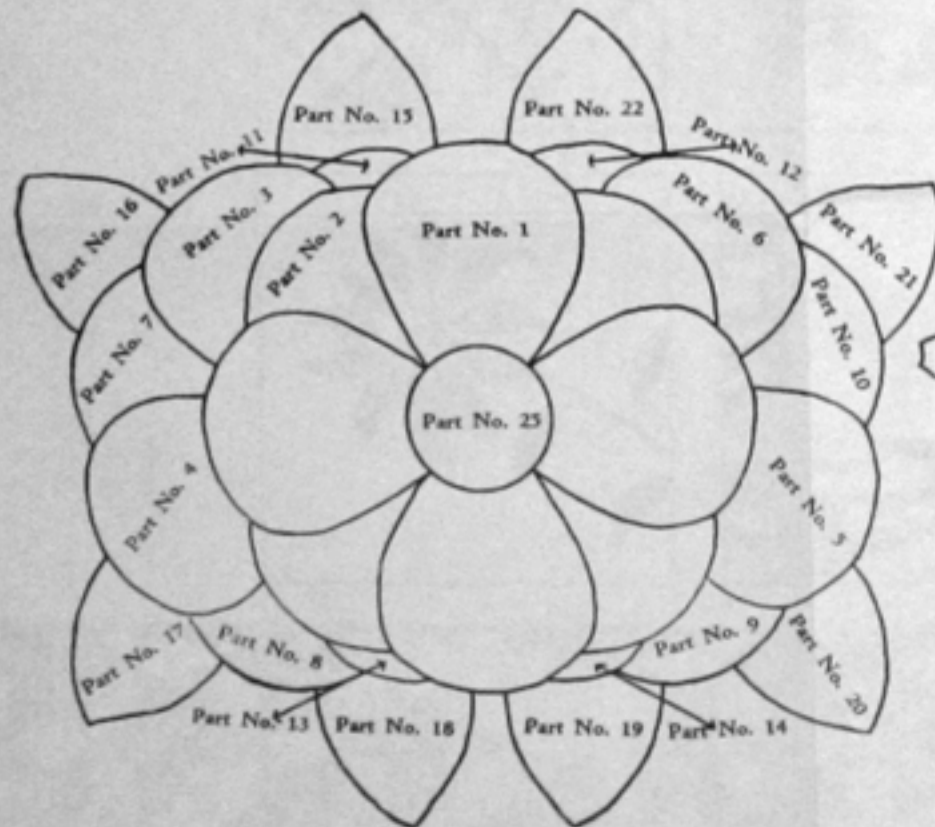
Yardage and Number of Pieces Required
(Material 36 inches wide)

Light Pink Material.....1 yard	*Parts No. 26 through 32: 12 pieces each
Part No. 1.....72 pieces	14 bias strips 44½" x ½"
Part No. 2.....72 pieces	4 strips ½" x 48"
*Part No. 25.....12 pieces	4 strips ½" x 40"
Dark Pink Material.....1 yard	2 strips ½" x 60"
Parts No. 3 through 14: 18 pieces each	2 strips ½" x 44"
*Part No. 24.....12 pieces	White Material.....8½ yards
Yellow Material.....¾ yard	4 strips 22" x 50"
Part No. 25.....18 pieces	2 strips 18" x 80"
Green Material.....2 yards	2 strips 18" x 96"
*Parts No. 15 through 22: 18 pieces each	Material for Back—White.....8½ yards

*One half of these pieces are cut as shown and the other half are reversed.

THESE ARE ACTUAL SIZE PATTERNS

NO SEAM ALLOWANCE



NOTICE
Wrappers for cotton having working patterns for quilts printed thereon are covered by application for letters patent in the United States Patent Office.
Copyright 1939
THE STEARNS & FOSTER COMPANY
Lackland, Cincinnati, Ohio

