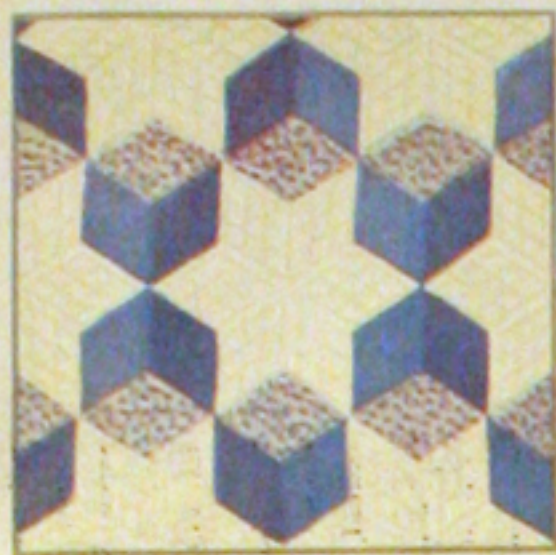




76-FLORAL WREATH



6-TUMBLING BLOCKS



24-DANCING DAFFODILS



70-STAR BRIGHT



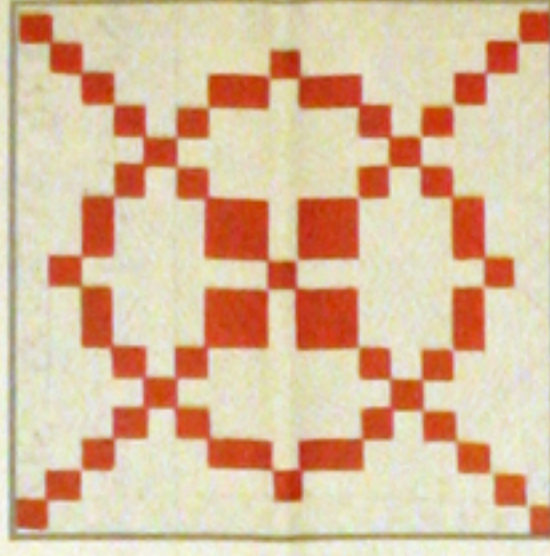
39-POINSETTIA



47-WATER LILIES



28-HARTWA'S VINEYARD



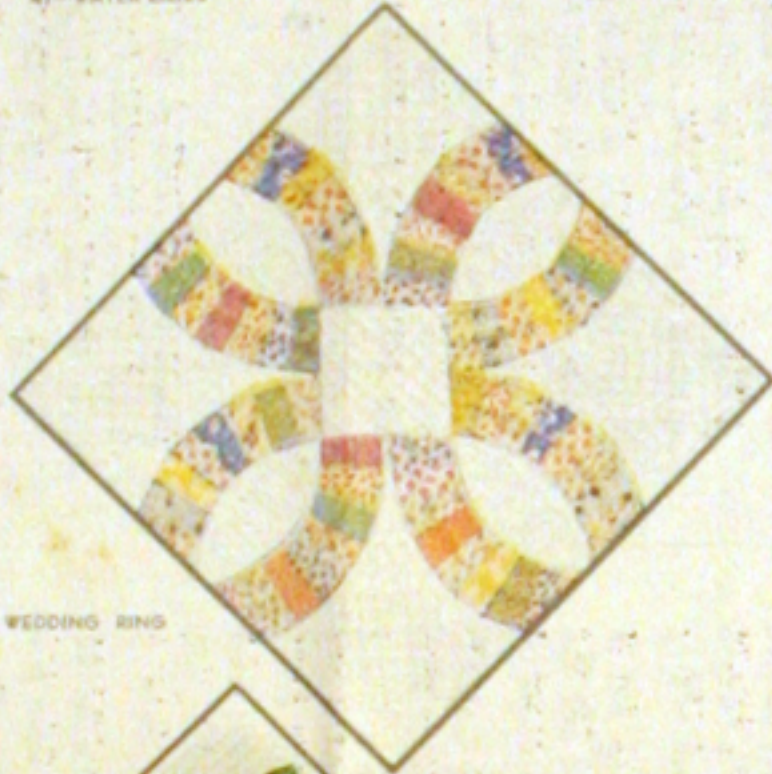
34-HOMESPUN



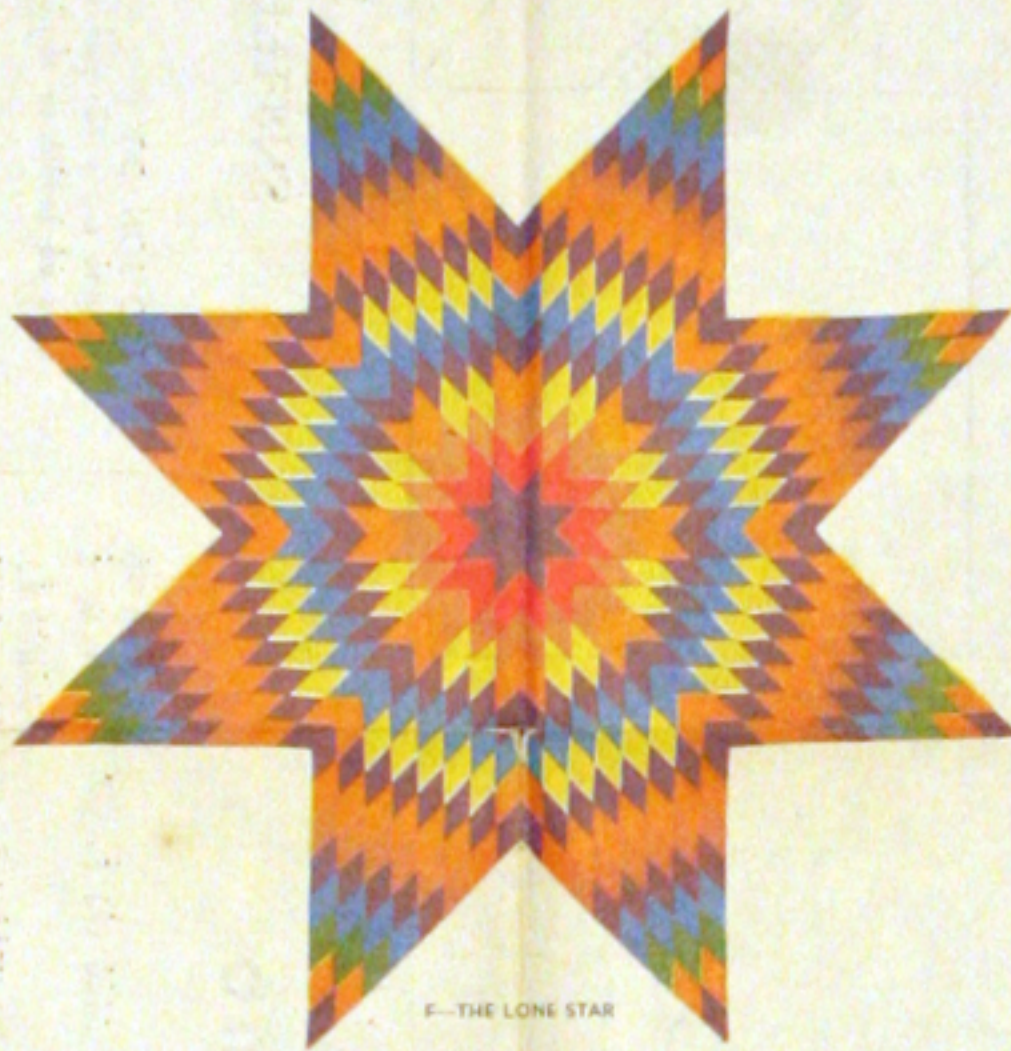
8-SUNFLOWER



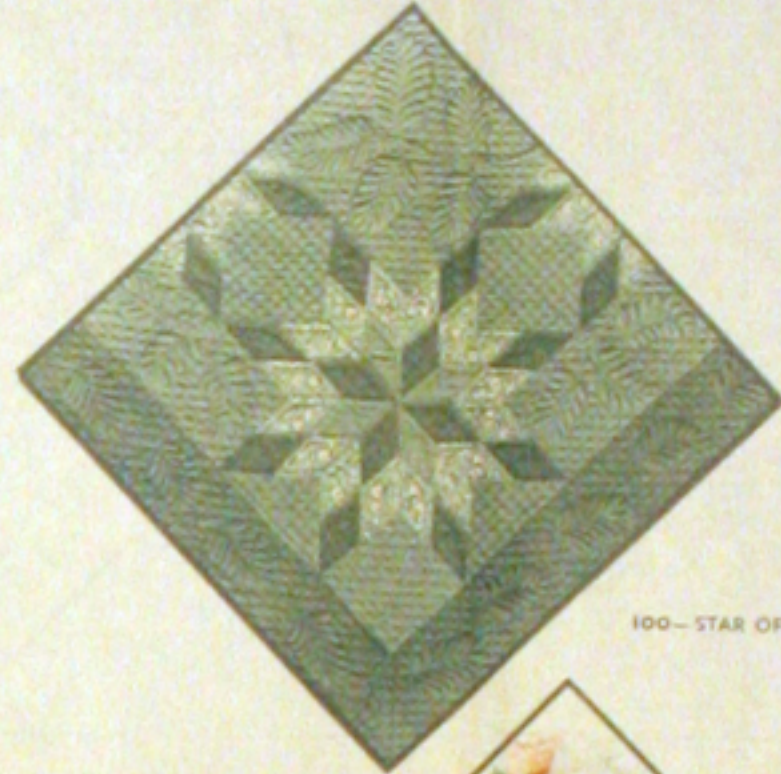
8-IRIS



31-DOUBLE WEDDING RING



5-THE LONG STAR



100-STAR OF BLUEGRASS



80-APPLE BLOSSOMS



83-COUNTRY GARDENS

Save THE QUILT PATTERN which is printed on reverse side of this wrapper. You may obtain the pattern for any quilt design illustrated by using the coupon which is printed in the lower right-hand corner of this wrapper.

1 lb. 3 oz.

ONE SEAMLESS SHEET

FULL QUILT SIZE - 81 BY 96 INCHES

MOUNTAIN MIST

REG. U.S. PAT. OFF. AND IN CANADA

NEEDLE-EASY "GLAZENE" FILLING for QUILTS

Uniform in Thickness • Does Not Stretch Thin • Makes a Quilt That Will Wash Beautifully

THE STEARNS & FOSTER COMPANY
LOCKLAND, CINCINNATI, OHIO

FORM 106
© 1954 S & F CO.
LITHO IN U.S.A.

Guaranteed by the Manufacturer
100% NEW MATERIAL
OHIO REGISTRY No. 52



23-TURKEY TRACKS



1-NEW YORK BEAUTY



39-POSWOOD



30-BOSTON COMMONS



64-COUNTRY LANES



479 Bluebird for September 1951

BLUEBIRDS FOR HAPPINESS

PATTERN No. 79 OF THE MOUNTAIN MIST SERIES—A PIECED QUILT

Flowers have often been used as the motif for lovely quilts, but rarely have animals or birds been adapted to this use. While putting together odd pieces of material, an early quilter found that the parts of a star accented by different shades, looked exactly like small birds centered on an interesting point. In this way the Bluebird Quilt was created. There are not many of these quilts to be found although there is no question as to their beauty and simplicity. For this reason we are now giving it to our Mountain Mist friends and hope that they will all enjoy making one of these lovely quilts.

DIRECTIONS

1. First make actual size patterns for marking each piece. To do this trace the outlines through thin paper. Paste onto cardboard or the smooth side of sandpaper, and cut out exactly on the pencil lines. Or transfer directly with carbon paper. Sandpaper, when placed rough side down, will not slip while marking. Make several patterns for each piece, since there are so many to be marked. When the edges of one pattern become worn, a new one is then at hand.
2. If there is any doubt about the color fastness of your material, or if there is danger of shrinkage, first wash and iron the cloth. If the material for the top is washed, also shrink that to be used for the back before quilting.
3. Follow the Yardage Chart and mark the required number of pieces on each color of material. Mark on the wrong side of the goods and space the outlines far enough apart to allow for narrow seams ($\frac{1}{8}$ inch or less). DO NOT CUT

ALONG THESE LINES; cut a seam's width outside of them. The pieces can then be joined exactly along the pencil lines which remain to assure accuracy.

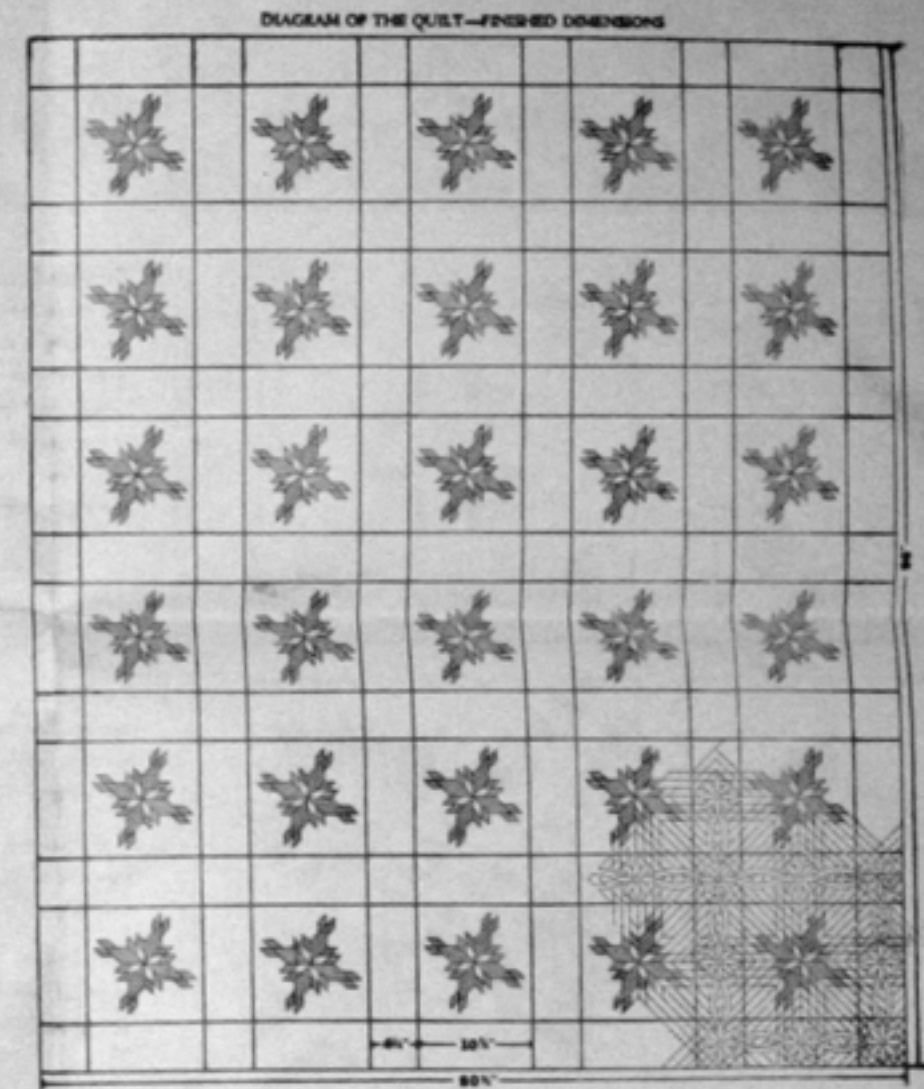
4. After all the pieces have been marked, cut out and arrange them in part and color groups. Run a thread loosely in and out each group so that pieces can be detached as needed and will not be lost.

5. Following the diagram of the block, join the pieces forming the block. To do this we suggest that you start with Part 2 in the light material and add the Part 1 pieces which border it. Next combine the Parts 1 and 2 of the dark material, being sure not to duplicate the white Part 1 of the center. The two may then be combined and the remaining sections added to them. Now add the white Parts 3 and 4 which complete the block. There will be thirty of these blocks needed, each measuring $10\frac{1}{4}$ inches square. At all times be sure that the pieces are put together accurately to avoid puckering.

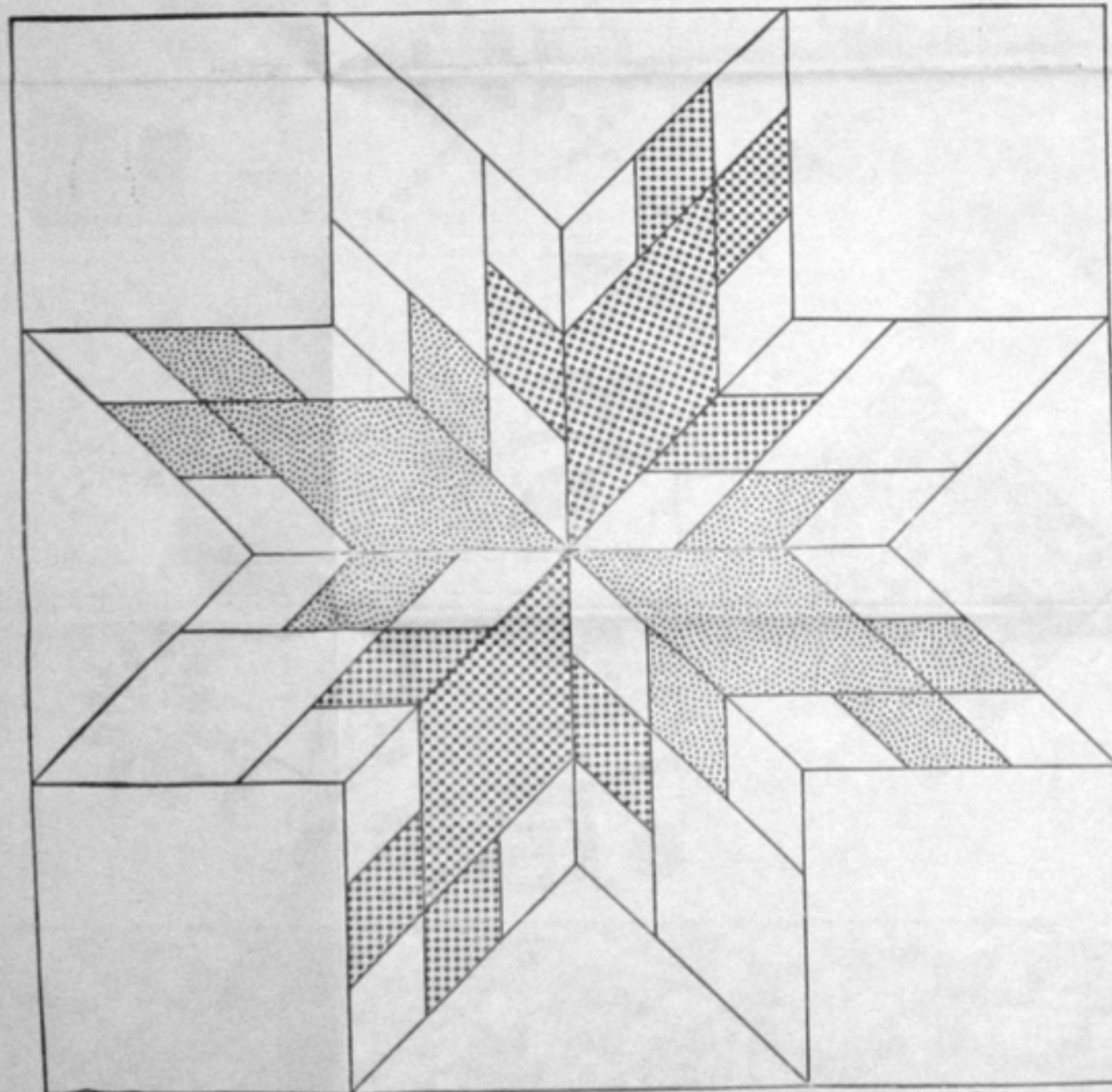
6. When all of the blocks have been completed they may be joined together with the border strips which are of white material, $4\frac{1}{2}$ inches wide—see diagram of the Quilt.

7. You are now ready for the quilting which includes fixing the quilt back to the quilting frame, laying on the Mountain Mist Quilting Cotton, marking the quilting pattern (See Quilting Suggestions), laying on the quilt top and stitching the quilting pattern.

8. When the quilting has been completed, remove from the frame and bind the edges.



THESE ARE ACTUAL SIZE PATTERNS
NO SEAM ALLOWANCE



QUILTING SUGGESTIONS

The parts of the Block of this quilt are so small and include so much of the Block that there is little room for a quilting design. The border strips, however, afford a perfect setting for more elaborate quilting and we have given you our suggestions for a pattern to be used in them.

First make a pattern for the quilting design in the same manner as for the actual size patterns. With this pattern mark the design on the right side of the quilt top. These pencil marks may be removed with an gum eraser when the quilting is completed. The diagonal lines of the background quilting may be drawn with a ruler following the lines formed by the parts of the Block as shown in the diagram of the quilt.

PERFORATED QUILTING PATTERNS

Beginning with Pattern No. 76 of our Series, a quilting pattern will be perforated through the Mountain Mist wrapper. In cases where the perforated pattern is not suited to the design of the printed quilt pattern, it is intended that the pattern be saved for future use on another quilt.

DIRECTIONS FOR USING PERFORATED PATTERNS

To mark cloth with powder through a perforated pattern, place it on a firm surface, such as a table top. You will notice the perforations are smooth on the side with the colored printing and somewhat rough on the side printed in black. Place smooth side of pattern next to the cloth and pin to hold it in proper position. For clear marking have as little movement as possible between pattern and cloth. If you wish a heavier marking, smooth the rough side of the pattern with sandpaper which will make the perforations a little larger.

MARKING POWDER. If you do not have marking powder you can mix it easily yourself. From any drug store buy 10c worth of Powdered Ultramarine (a blue powder) and mix 1 teaspoonful of it with 4 teaspoonfuls of ordinary powdered cornstarch. Or you may use powdered cinnamon or cocoa (avoid chocolate as it is greasy).

TO USE MARKING POWDER. Make a little powder puff with cotton covered with soft cloth, place powder in a saucer, dip puff in powder and first pat it over the perforation to spread powder evenly. Then rub it lightly with a scrubbing motion to work powder through the perforations. Remove pattern and blow off excess powder on the cloth. Go over design with a soft lead pencil or scratch the design with a needle—otherwise the powder atoms may dust all with the handling of the cloth.

YARDAGE CHART

(Material 36" Wide)

Light Blue	2 Yards
Part No. 1	240 Pieces
Part No. 2	120 Pieces
Dark Blue	2 Yards
Part No. 1	240 Pieces
Part No. 2	120 Pieces
White	8-2/3 Yards
Part No. 3	120 Pieces
Part No. 4	120 Pieces
Material for the Back	7-2/3 Yards

Copyright 1941
NOTICE
Wrappers for Cotton Quilting having working addresses for Quilts entered herein are fully protected and are exclusive with the Stearns & Foster Company.
ALL RIGHTS RESERVED
THE STEARNS & FOSTER COMPANY
Leakland, Cincinnati, Ohio

QUILTING SUGGESTION

