

Apple Blossoms
8-0

1948 53L



36—FLORAL CAMEO



A—TUMBLING BLOCKS



102—DEW DROP



70—STAR BRIGHT



73—GRANDMOTHER'S FLOWER GARDEN



119—DADDY HEX



28—MARTHA'S VINEYARD



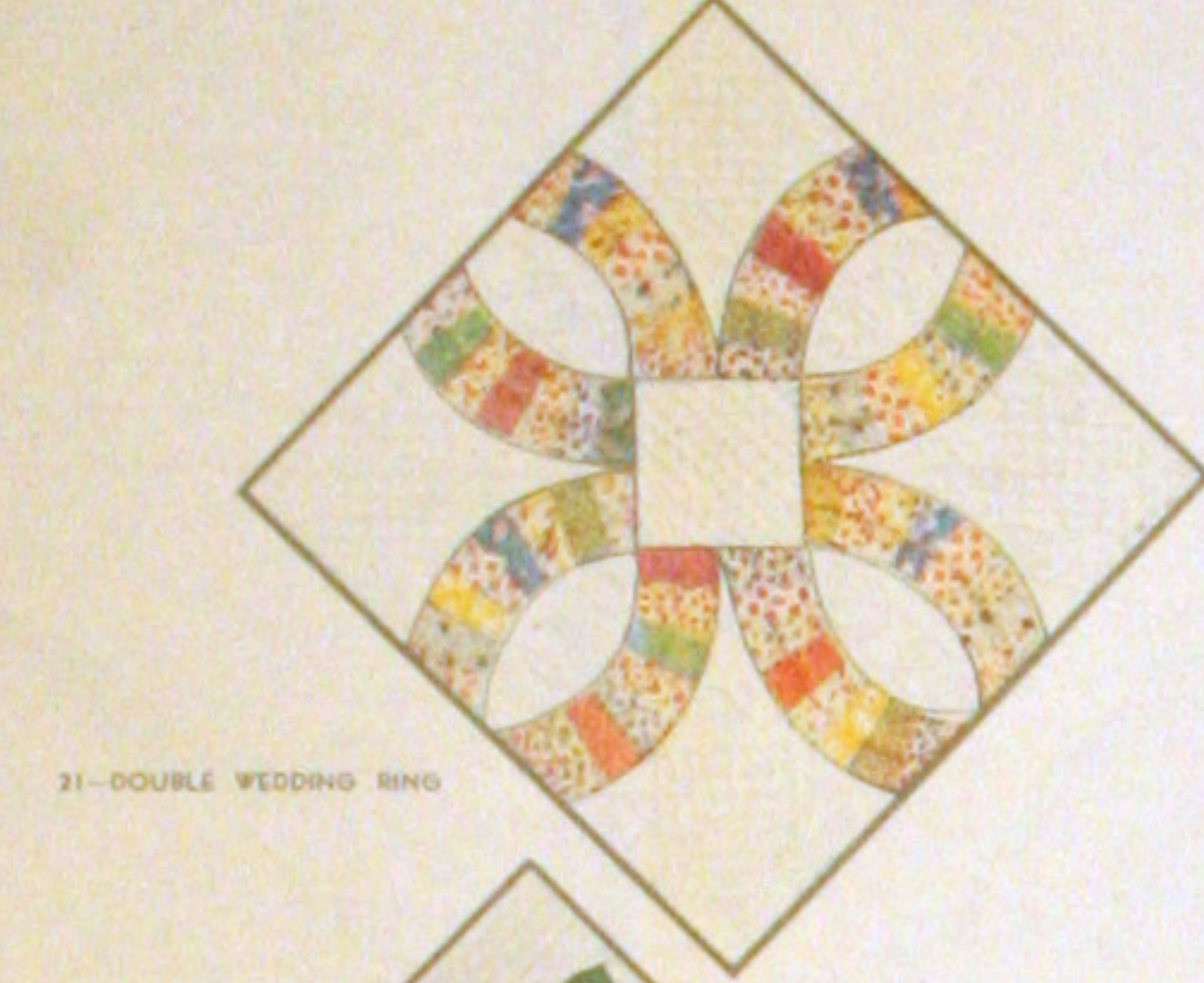
34—HOMESPUN



P—SUNFLOWER



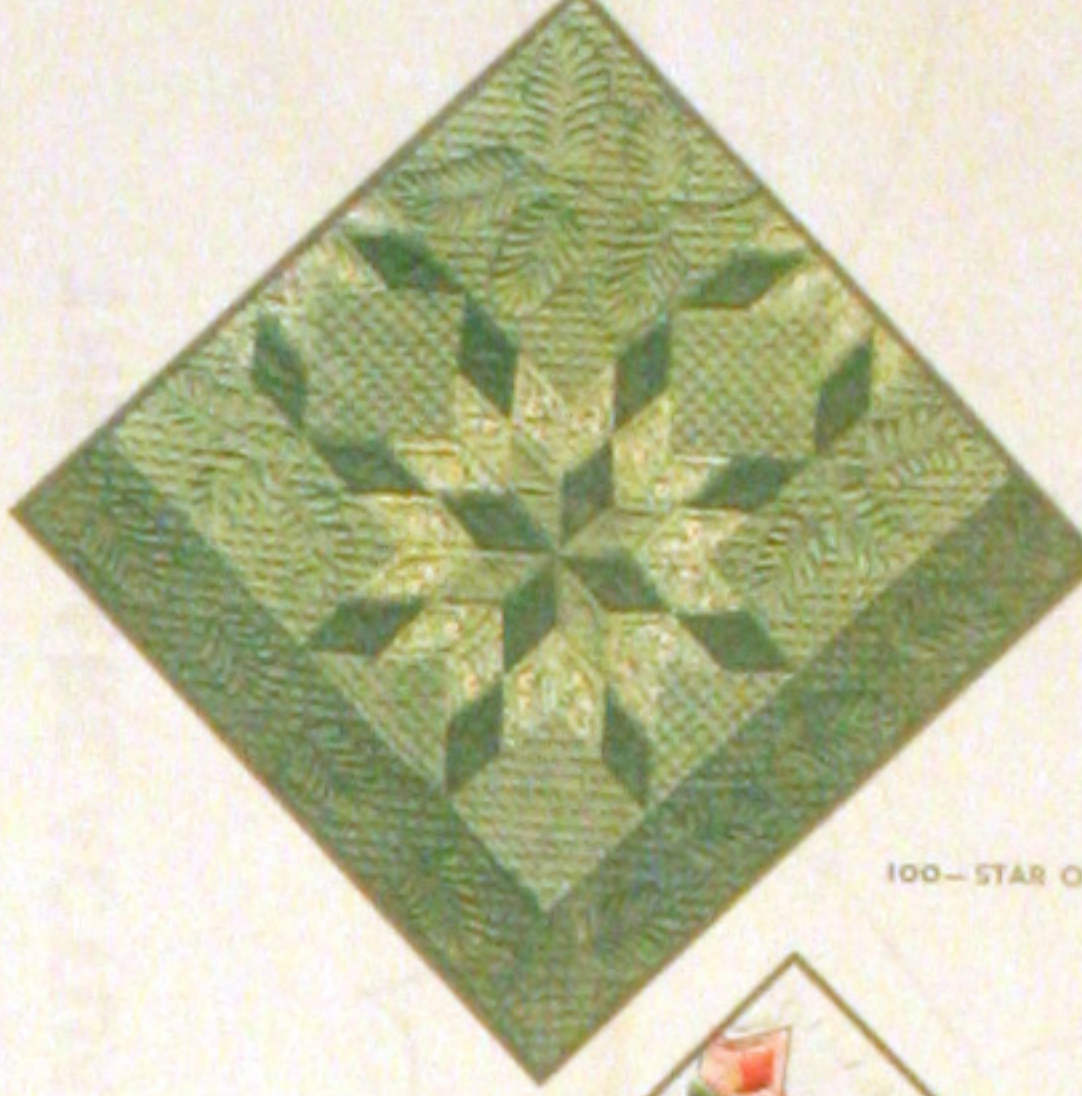
B—IRIS



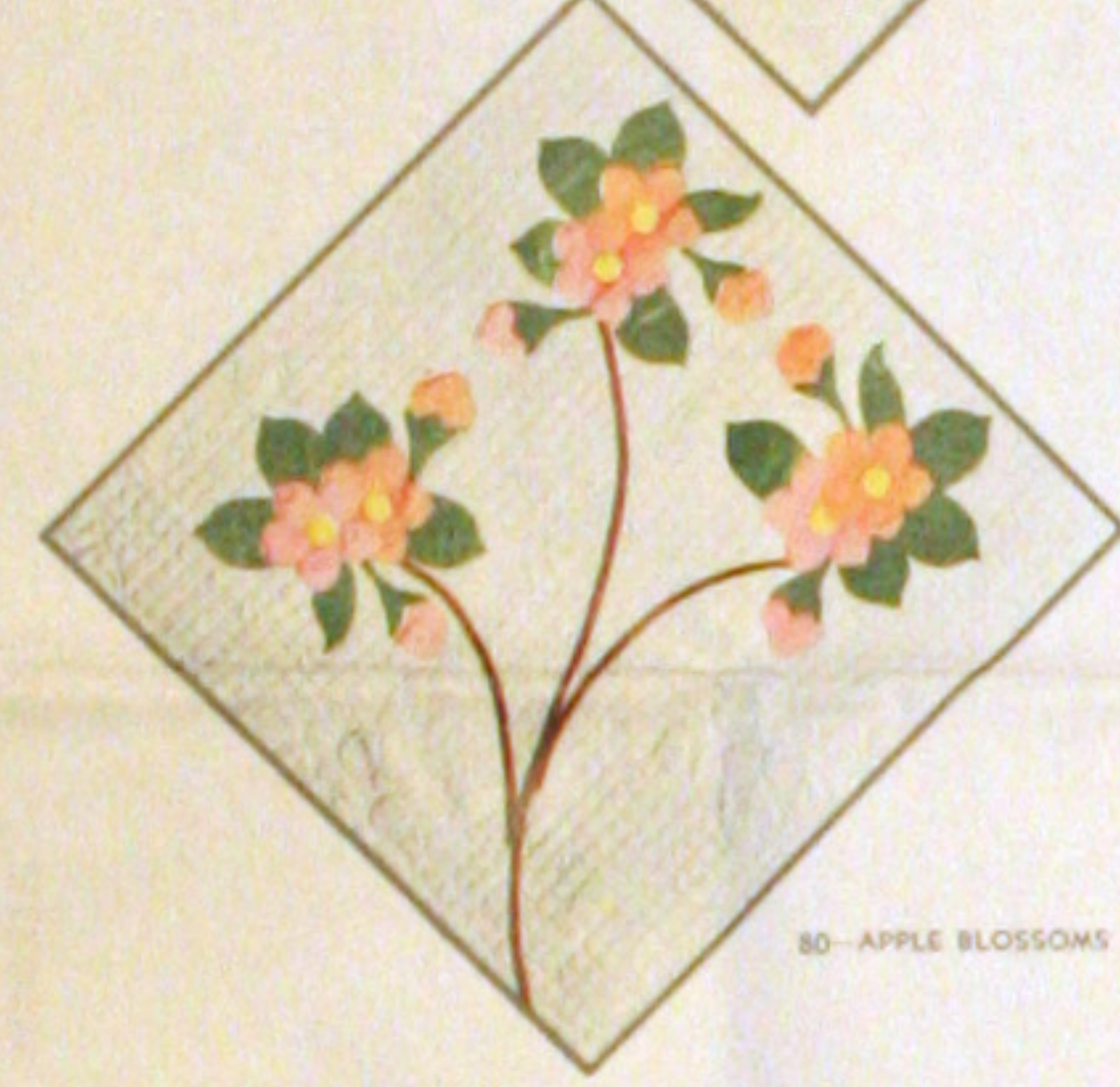
21—DOUBLE WEDDING RING



F—THE LONE STAR



100—STAR OF BLUEGRASS



80—APPLE BLOSSOMS



83—COUNTRY GARDENS

SAVE THIS WRAPPER
THERE IS A VALUABLE QUILT PATTERN
ON THE REVERSE SIDE.
NOTE—Patterns for quilts shown on this
wrapper and in our catalog may be ordered at
a saving with the coupon which is printed below.

1 lb. 3 oz.

ONE SEAMLESS SHEET

FULL QUILT SIZE - 81 BY 96 INCHES

MOUNTAIN MIST

REG. U.S. PAT. OFF. AND IN CANADA

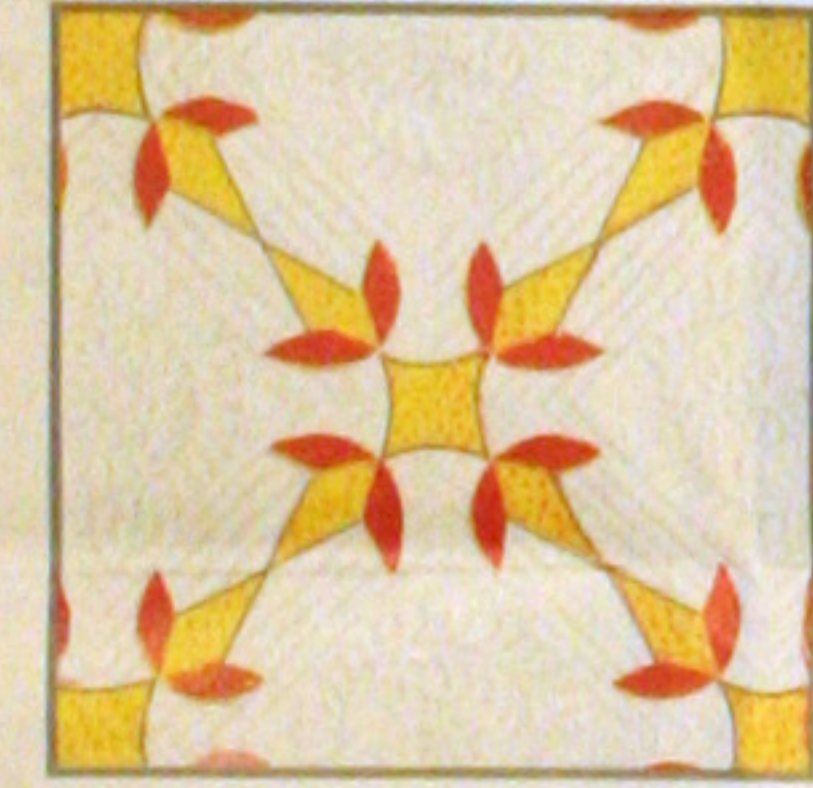
NEEDLE-EASY "GLAZENE"™ ALL COTTON FILLING

Uniform in Thickness • Does Not Stretch Thin • Makes a Quilt That Will Wash Beautifully

THE STEARNS & FOSTER COMPANY CINCINNATI OHIO 45215

ALL COTTON
100% NEW (S&F) MATERIAL
OHIO REGISTRY No. 52

Form 109
1962 S & F CO.
LITHO IN U.S.A.
RN 19000



23—TURKEY TRACKS



K—NEW YORK BEAUTY



29—DOGWOOD



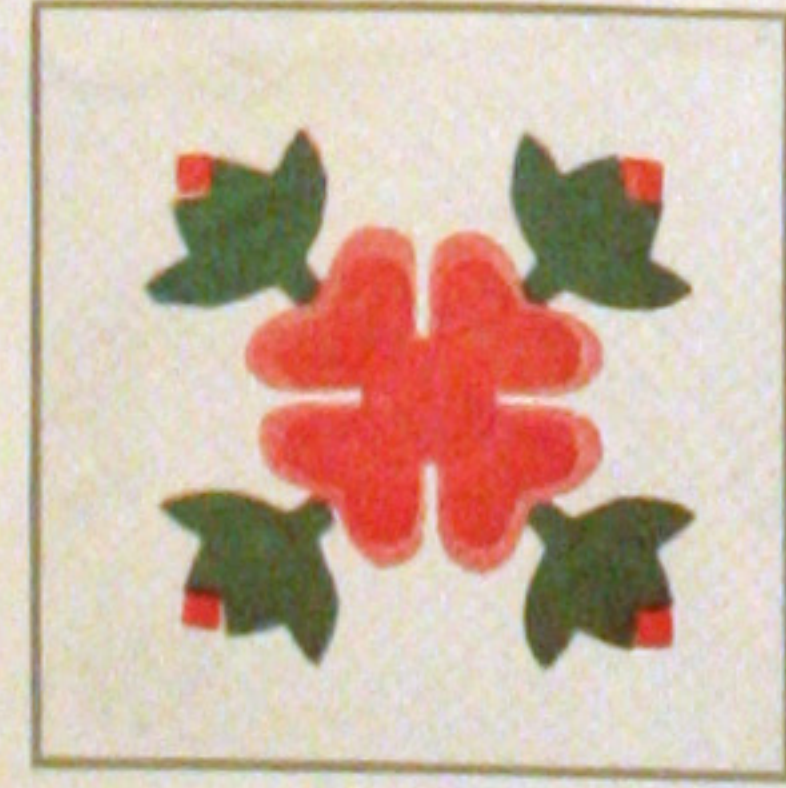
30—BOSTON COMMONS



64—COUNTRY LANES



93—SPRING WREATH



20—OHIO ROSE



75—DRESDEN PLATE



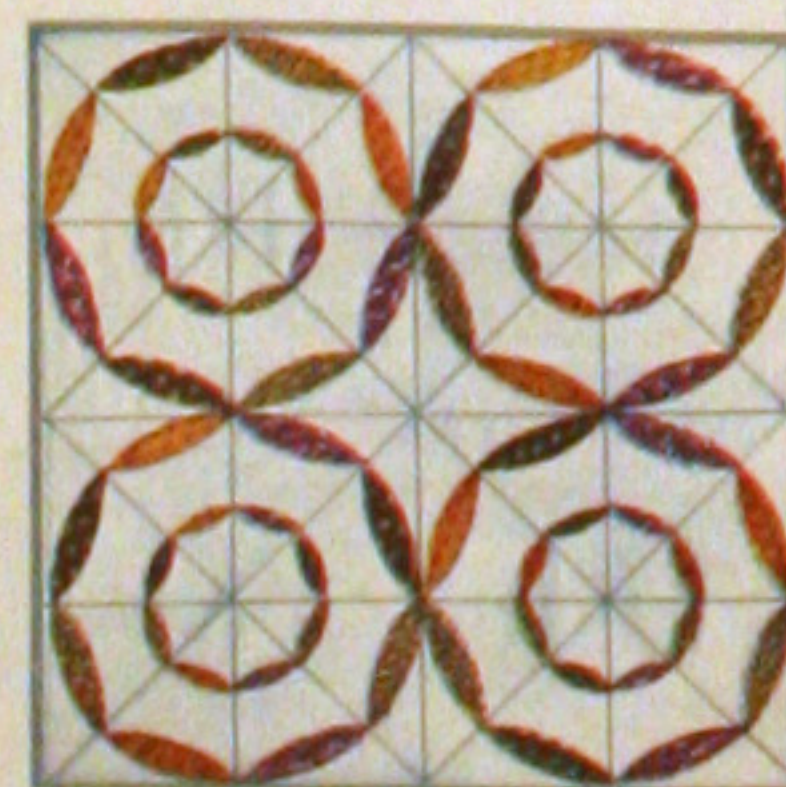
76—DAISY CHAIN



106—COLUMBINE



105—SUNBURST



94—ODDS AND ENDS



112—POINSETT WREATH

HOW TO ORDER PATTERNS

Printed on the other side of this wrapper you will find one of our famous quilt patterns. If it does not suit your needs we will be glad to send you your choice of any of the patterns illustrated in our free catalogue or on this wrapper at a cost of 20¢ each, with this coupon. The regular price of our patterns is 35¢.

Address: THE STEARNS & FOSTER CO., QUILT DEPARTMENT, Cincinnati Ohio 45215

My Name _____

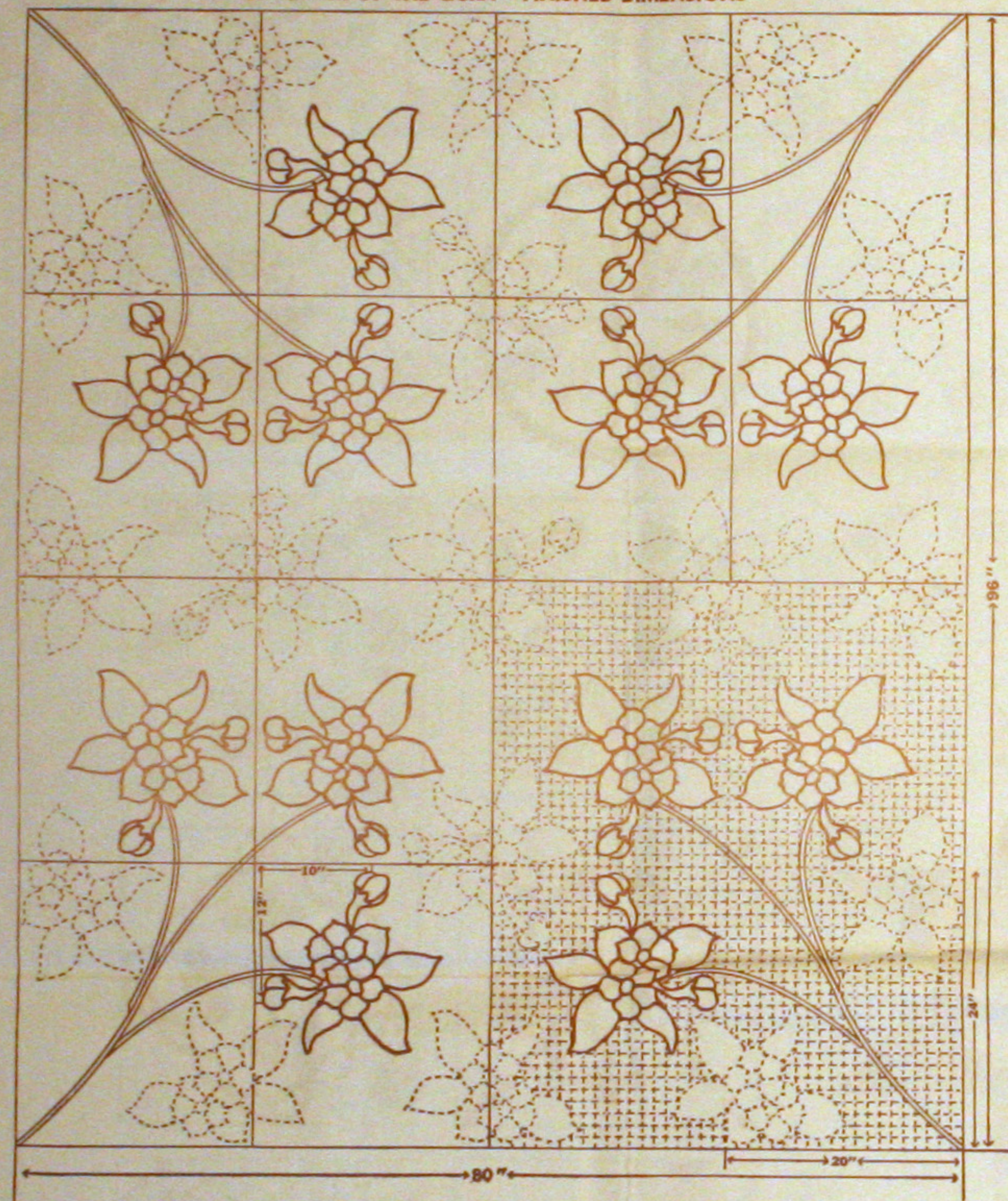
Street and Number _____

City and State _____

QUILT PATTERN COUPON

THIS OFFER SUBJECT TO WITHDRAWAL WITHOUT NOTICE

DIAGRAM OF THE QUILT - FINISHED DIMENSIONS



APPLE BLOSSOMS

Pattern No. 80 of the Mountain Mist Pattern

An Appliqued Quilt

Quilts have been made with many of the Spring flowers as their theme. The Daffodil, the Iris and the Tulip have been popular for years. Many have chosen fruit blossoms and wild flowers to bring Spring into their homes the year round. All are very beautiful, but none so appealing as Apple Blossoms—soft pink and white against a background of green and blue.

We have made a new arrangement of the delightful blossoms so that you too may have a lovely Spring quilt for the center of a cheerful bedroom. We know you will enjoy making this beautiful quilt at any season because it will bring many hours of joy in its making and its use.

DIRECTIONS

1. First make actual size patterns for all of the parts as numbered. To do this, trace the outlines through thin paper, paste onto cardboard or the smooth side of sandpaper, and cut out exactly along the penciled lines. Or, transfer directly with carbon paper. Sandpaper patterns, placed rough side down

on the goods, will not slip in the marking. Mark the part number on each pattern.

2. If there is any doubt about the fastness of the color, or if there is a possibility of shrinkage, first wash and iron the cloth. If the top of the quilt is washed before quilting, also shrink the goods for the back of the quilt.

3. Mark the required number of parts on each color as listed in the Yardage Chart. Mark on the right side of the goods and space the outlines far enough apart to allow for seams ($\frac{1}{8}$ " or less) when the pieces are cut. Do not cut along these lines but a seam's width outside. The lines remain to show where to turn under the edges for basting.

4. Cut out and arrange in color groups, prepared to pin and baste into position on the background blocks. Cut the background blocks from the blue material. Each block measures 24" x 20" when completed.

5. You are now ready to place the parts and baste into position. Following the Diagram of the quilt, locate each group of blossoms and leaves. Baste into position and applique to the background with simple whip stitches. Be sure to note the exact position of each group so that when the blocks are put together the blossoms will be in the position indicated on the Diagram. Also note that the buds and leaves all follow in the same directions for each group.

6. When the blossoms with their background of leaves and buds have been appliqued, join the blocks and locate the brown stems on the background. These stems are made of bias strips cut twice the size indicated on the diagram. Fold so that the edges meet in the middle of the back. Place the stems in graceful curves from the corners to the blossom groups, baste into position and applique.

7. In basting and appliqueing, save the making of a seam whenever possible by fitting raw edges under the seams to be whipped.

8. The final step is the quilting. This includes marking the quilting design on the top, fixing the quilt back to the frame, laying on the

Mountain Mist Quilting Cotton and the quilt top, stretching and fastening the entire quilt. It is now ready for the actual quilting which is done by following the penciled design marked on the top with a very fine running stitch. Professional quilters stitch from 10 to 14 stitches to an inch. When the quilting is finished, remove from the frame and bind with a narrow bias strip of green material.

QUILTING SUGGESTIONS

We suggest a crossbar background of straight lines either $\frac{1}{8}$ " or 1" apart. Scattered over this background are quilted blossoms and leaves of the pattern as indicated on the diagram. These may be marked from the actual size patterns used in marking the appliqued parts, or from the perforated patterns given you herewith.

The entire quilting design may be marked on the quilt top before putting it into the frame, or you may mark a small portion either with a pencil or by scratching with your needle as your quilting proceeds.

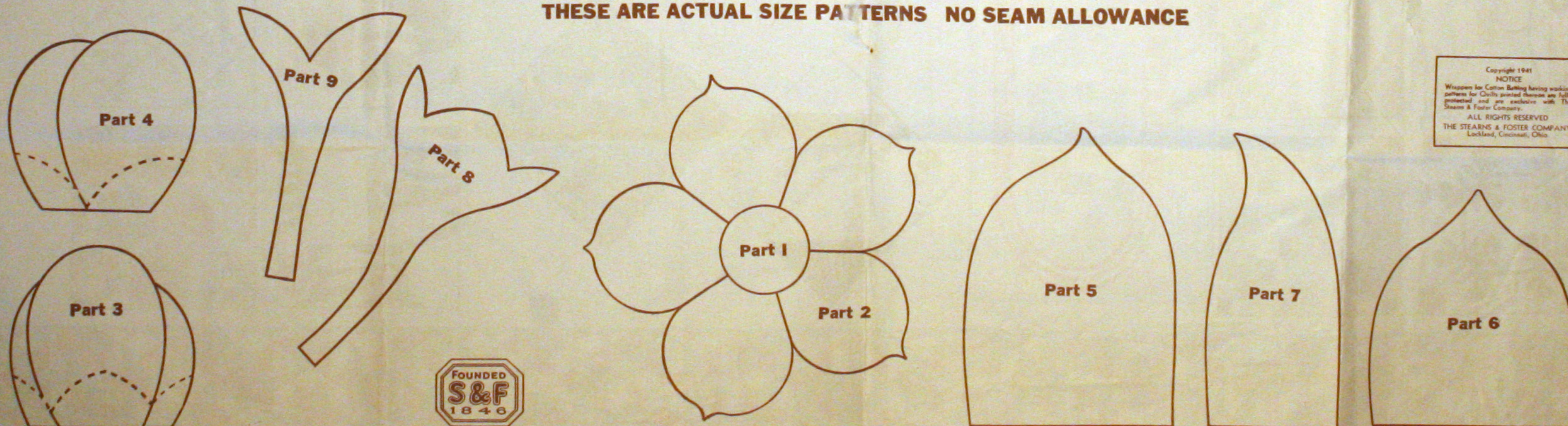
After the quilting is completed the pencil marks may be removed with an art gum eraser.

YARDAGE CHART

(MATERIAL 36" WIDE)

DARK PINK		
Part 2... 60 Pieces	Complete Flower	$\frac{5}{8}$ Yard
Part 3... 12 Pieces	Large Bud	
LIGHT PINK		
Part 2... 48 Pieces	Part Flower	$\frac{5}{8}$ Yard
Part 4... 12 Pieces	Small Bud	
YELLOW		
Part 1... 24 Pieces	Center Flower	$\frac{1}{8}$ Yard
BROWN		
Bias Strips for Stems	$\frac{1}{2}$ " Finished Cut 1" Wide	$\frac{2}{3}$ Yard
GREEN		
Part 5... 24 Pieces	2 to each Group	$1\frac{1}{2}$ Yards
Part 6... 24 Pieces	2 to each Group	
Part 7... 12 Pieces	1 to each Group	
Part 8... 12 Pieces	1 to each Group	
Part 9... 12 Pieces	1 to each Group	
BLUE		
16 Blocks 20" x 24"		$6\frac{1}{2}$ Yards
Material for Back		$6\frac{1}{2}$ Yards

THESE ARE ACTUAL SIZE PATTERNS NO SEAM ALLOWANCE



Copyright 1941
NOTICE
Whisper for Cotton Belling having working
patterns for Quilts printed thereon are fully
protected and are exclusive with The
Stearns & Foster Company.
ALL RIGHTS RESERVED
THE STEARNS & FOSTER COMPANY
Lockland, Cincinnati, Ohio