



74-FLORAL WREATH



A-TUMBLING BLOCKS



24-DANCING DAFFODILS



70-STAR BRIGHT



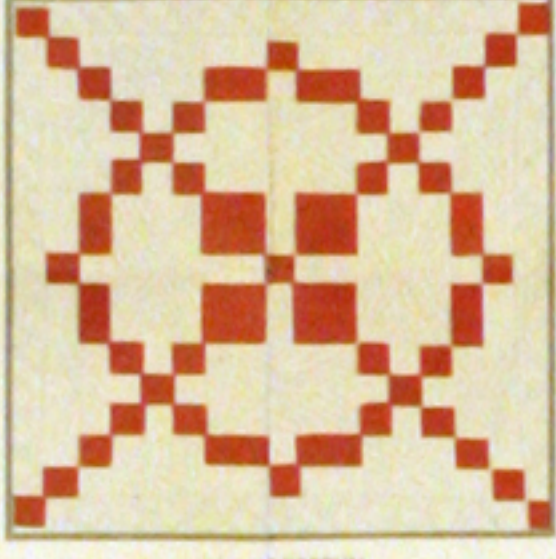
39-POINSETTIA



47-WATER LILIES



28-MARTHA'S VINEYARD



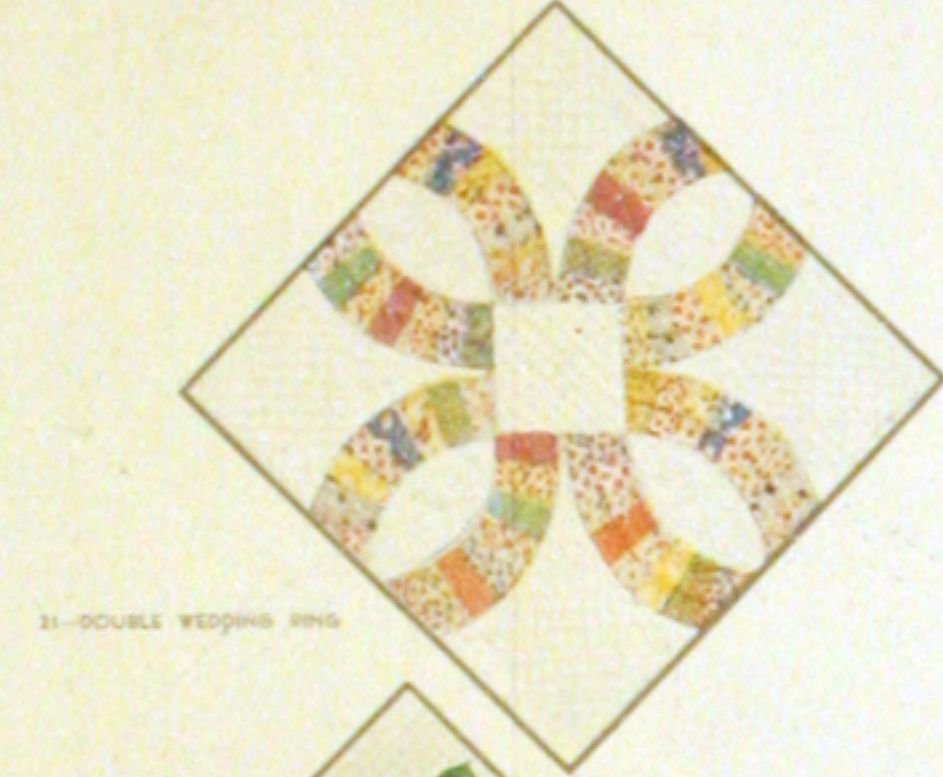
36-HOMESPUN



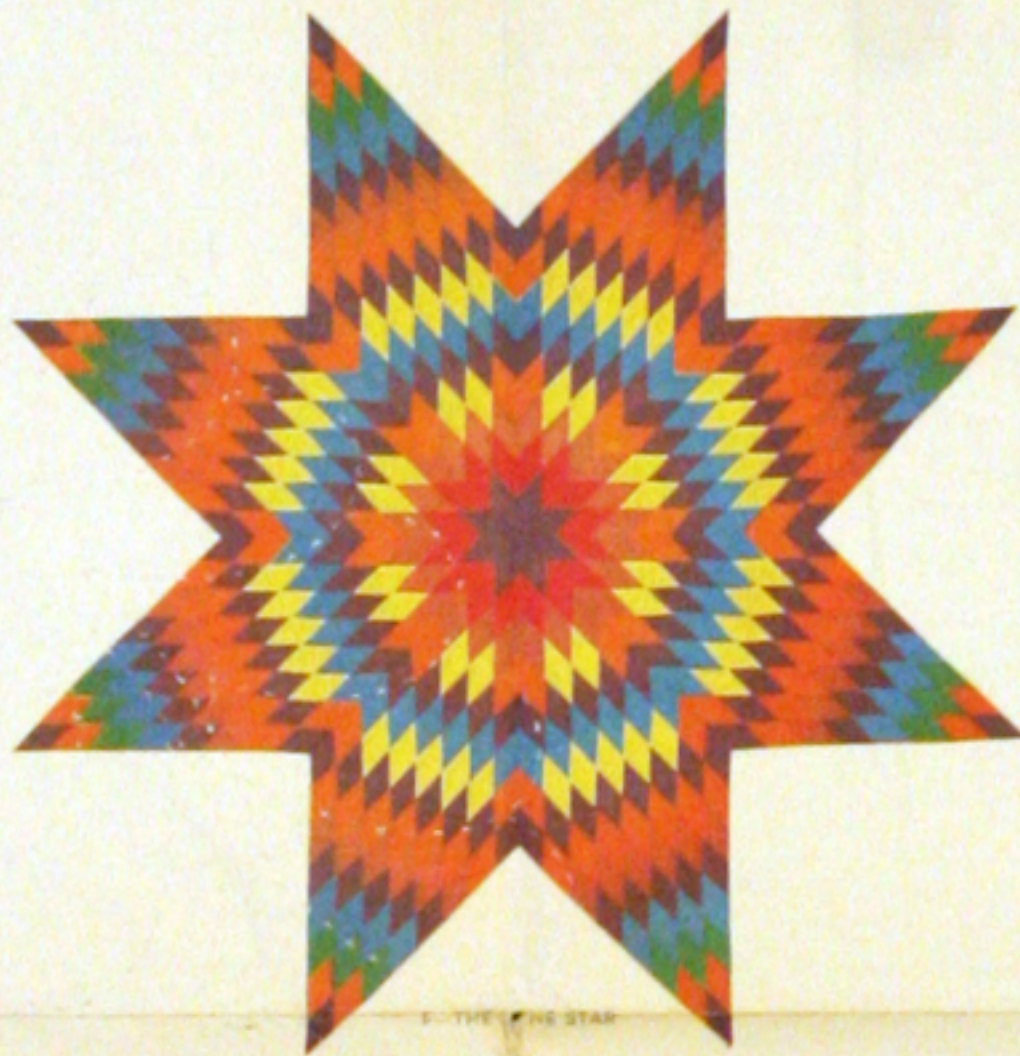
P-SUNFLOWER



8-IRIS



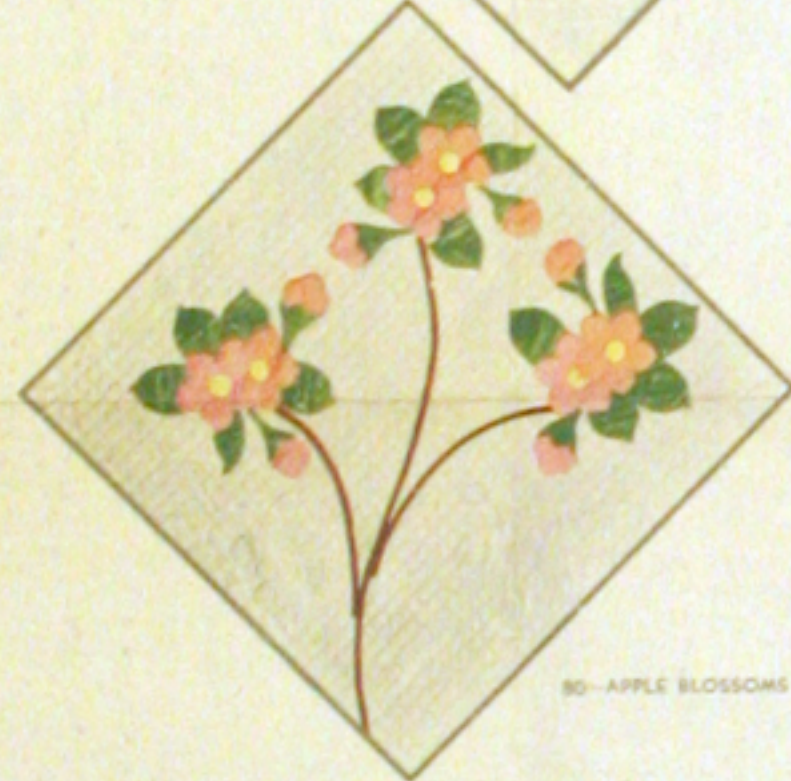
21-DOUBLE WEDDING RINGS



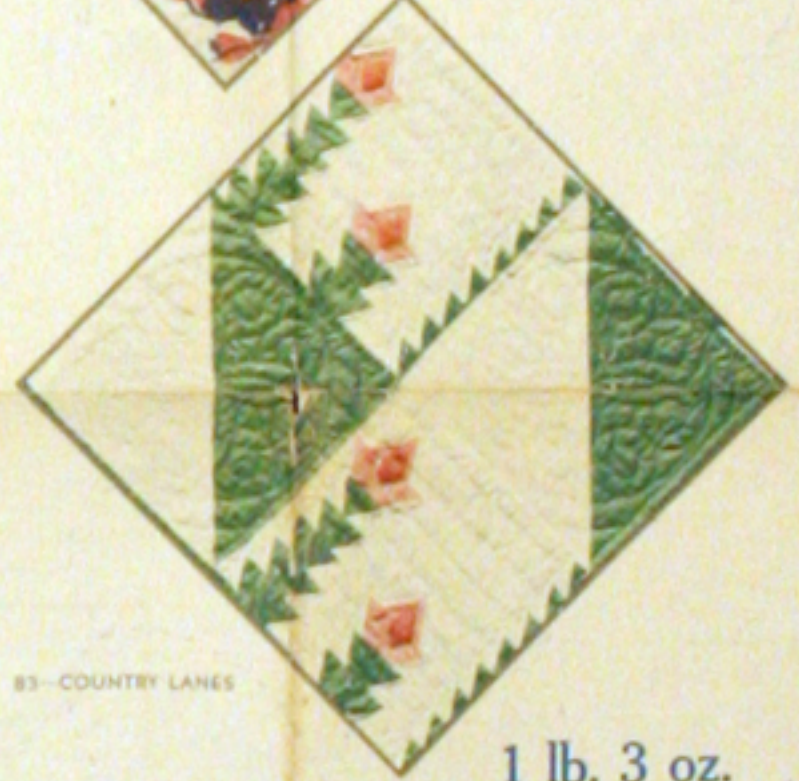
5-THE GREAT STAR



25-GRANDMOTHER'S FLOWER GARDEN



80-APPLE BLOSSOMS



83-COUNTRY LANES

Save THE QUILT PATTERN which is printed on reverse side of this wrapper. You may obtain the pattern for any quilt design illustrated by using the coupon which is printed in the lower right-hand corner of this wrapper.

1 lb. 3 oz.

ONE SEAMLESS SHEET

FULL QUILT SIZE - 81 BY 96 INCHES

MOUNTAIN MIST

REG. U.S. PAT. OFF. AND IN CANADA

NEEDLE-EASY "GLAZENE" QUILTING COTTON

Uniform in Thickness • Does Not Stretch Thin • Makes a Quilt That Will Wash Beautifully

THE STEARNS & FOSTER COMPANY
LOCKLAND, CINCINNATI, OHIO

Guaranteed by the Manufacturer
100% NEW COTTON FIBER
NO SECOND-HAND MATERIAL



23-TURKEY TRACKS



6-NEW YORK BEAUTY



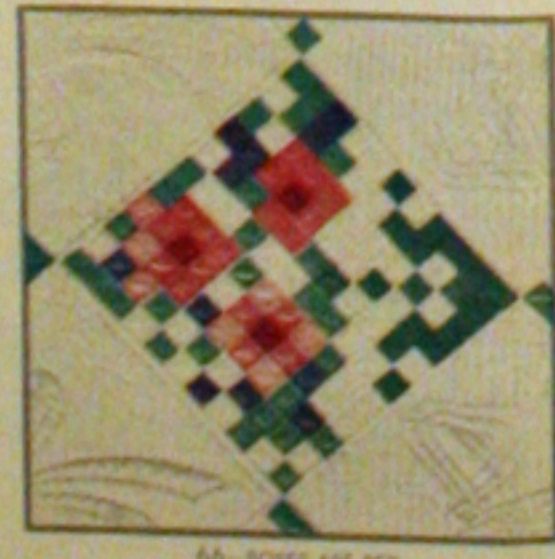
29-DOGWOOD



30-BOSTON COMMONS



84-COUNTRY LANES



14-ROSE'S ARK RED



20-OHIO ROSE



75-DRESDEN PLATE



73-IRISH CHAIN SINGLE DOUBLE & TRIPLE



31-POMEGRANATE

QUILT PATTERN COUPON

18 from Book 1943

How to Obtain PATTERNS AND THE FILLING for YOUR QUILT

The regular price for each Mountain Mist quilt pattern is twenty-five cents. However, patterns can be ordered at the special price of only ten cents each if you "Mount" in the "Pattern Coupon" accompanying the order. This "Pattern Coupon" is printed on the wrapper that comes around each set of Mountain Mist Quilting Cotton. Only one coupon need be sent with an order, plus ten cents for each pattern wanted. The price of each pattern is twenty-five cents if the coupon is not sent with each order. Order the patterns by name or number.

A Free Pattern

When you buy Mountain Mist Quilting Cotton at a local store, you will find one of our latest quilt patterns printed on the back of the wrapper. Before placing a newly designed pattern on our list for sale, it is first used as the "free pattern". Thus, all Mountain Mist patterns published were at one time offered free on the wrapper of the Quilting Cotton.

Mountain Mist Quilt Patterns are designed, published and distributed by mail direct to quilt makers by The Stearns and Foster Company. The patterns shown are not sold in stores nor through agents.

MOUNTAIN MIST Quilting Cotton

"The Perfect Filling for Quilts"

SIZES. It is made in a single seamless sheet in two different sizes: "Regular size, 81 by 98 inches" and "Extra Large size, 81 by 108 inches." Both of the same thickness.

Mountain Mist is the correct weight and thickness recommended by expert quilters. To preserve the perfect even thickness and at the same time permit the cotton to be spread smoothly and evenly with out stretching thin, both sides are treated with waffle-like "Glosses". "Glosses" is a soft non-sticky covering that is an exclusive Mountain Mist feature. As the cotton is smoothed and unfolded, "Glosses" prevents the surfaces from sticking to one another. The cotton handles easily and quickly like a piece of cloth. It does not fit nor cling to the quilting, so it is a simple matter to adjust and fit it properly. The quilting of a quilt filled with this superior cotton will pull out and be even more beautiful after it is washed.

Where to Buy MOUNTAIN MIST

It is sold by Dry Goods and Department Stores throughout the United States. If your local merchant does not have it he can obtain it quickly from a nearby wholesaler. Mountain Mist is carried in stock for retailers by over one hundred wholesalers distributed nationwide over the country. Inquire on the Mountain Mist brand—it comes under no other name. Do not risk the most important part of your quilt by accepting a substitute as being "the same thing" or "just as good". If your merchant will not order it for you, write us.

for Extra Large Quilts

Mountain Mist is really priced for extra large quilts. Due to the "Glosses" on both surfaces the thickness may be easily split in half. Split the thickness about an inch back from the edge of both pieces to be joined. Then cut away half of the thickness of both pieces about three-quarters of an inch from the edge. Then lay the two half thicknesses over one another. The seam thus made will tend to stick together but some quilters prefer to baste it in long stitches. The advantage of this method is that the seam is the same thickness as the rest of the cotton so it does not interfere with the quilting.

Washing a Quilt

Any quilt that is filled with Mountain Mist Quilting Cotton and properly quilted (the rows of quilting not more than two inches apart), may be readily washed. There is just one precaution and that is not to compress the cotton while it is wet. Avoid scrubbing and wringing. Allow the water to drain off gently and hang it over a line to drip dry.

THE STEARNS & FOSTER CO.
LOCKLAND, CINCINNATI, O.

24-28 Printed in U. S. A.

IRIS BED

Pattern No. 88 of The Mountain Mist Series
(An Appliqued Quilt)

From the remaining material cut the 15 full blocks which will measure 8 1/2" square; the 16 half blocks measuring 8 1/2" long and 4 1/2" wide; and the four quarter blocks for the corners, measuring 4 1/2" square. All of these measurements allow 1/4" seams.

When Spring is in the air we are aware of the many lovely flowers which will be blooming. How often have you looked at a bed of Iris and wished you could preserve its beautiful colors? With this original Mountain Mist Pattern you may have your wish. The soft colors of the iris are perpetuated in a quilt and whether it be Spring or Fall you will have your bed of iris in your bedroom.

The colors to be used are two shades of purple, two shades of blue, a pale yellow and tangerine, all set off by the green leaves and stems on a pale green background. These colors may all be used in one quilt as indicated on the diagram, or any one of the combinations used for all of the flowers as desired. But regardless of selection you make, when the quilt is completed, we know you will be proud to have made it and will enjoy its bright cheerfulness for many years.

DIRECTIONS

1. First make cardboard patterns for each of the six parts. To do this trace the outlines through thin paper and paste them onto cardboard; cut along the pencilled lines. Or trace through carbon paper directly on the cardboard. Mark each part with its number.
2. If there is any doubt about the fastness of the colors of your material, or if there is a possibility of shrinkage, be sure to wash and iron it before cutting. (Note: If the material for the top is washed, also shrink that to be used for the quilt back.)
3. Take off the 8 1/2" border strips for the side borders. There will be two long strips each 96 1/2" long which will allow for 1/4" seams on each end and side.

4. Next cut out the parts allowing 1/4" seams on each. Mark around each part pattern but do not cut on the pencilled lines which remain to show exactly where to turn under the seams. The strips for stems are cut 1" wide bias. Turn under until the edges meet in the middle of the back. The stems will then measure 1/2" when completed. Place the parts in color groups by part number and fasten with a single stitch so that they will be ready for use and not lost or mislaid.
5. Locate the center of each block by folding diagonally each way and creasing lightly. Be careful not to stretch the block when folding on the bias. Locate the four flowers on each of 7 blocks by placing on the diagonal line 1" from the center. Baste into position and applique with fine shadow stitching. Locate the two flowers on 10 of the half blocks. To do this fold diagonally from the center of one long side to the opposite corners. On these diagonal lines place the two flowers, baste and applique. When putting these flowers onto the block save seams whenever possible by appliqueing over rough edges.
6. You are now ready to join the blocks of the quilt. Follow the diagram and place the plain and applique blocks together alternately. As they are joined the leaves may be added. The 20 short leaves are placed on the half blocks as indicated. When the leaves are applied to the background the base of each

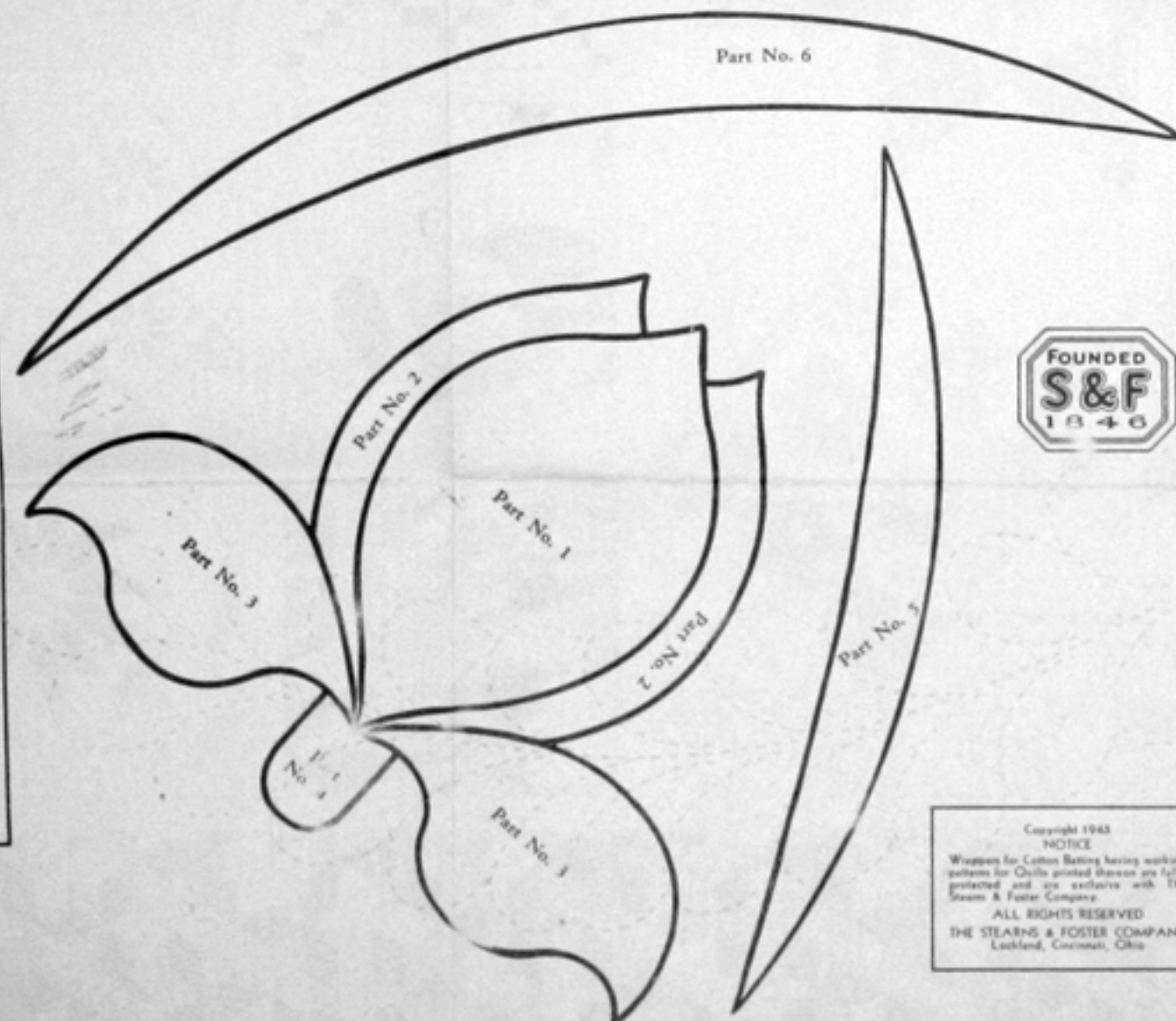
falling on the corner of the blocks, the stems may be added diagonally joining the flowers as indicated. The stems are 11 inches long. Finally the base of the flower is added to cover the joining of the stem to the flower. When all of the blocks and part blocks have been joined, complete the quilt by adding the side borders.

7. Now comes the quilting which is the final step. First press the quilt top and back. Mark the quilting design on the top — see Directions for Perforated Quilting Patterns. Fix the back to the quilting frame. Spread the Mountain Mist Quilting Cotton, lay on the quilt top, stretch and fasten the entire quilt in the frame. You are now ready for the actual quilting. (See Quilting Directions.) When this is completed, remove from frame and bind the edges with narrow binding.

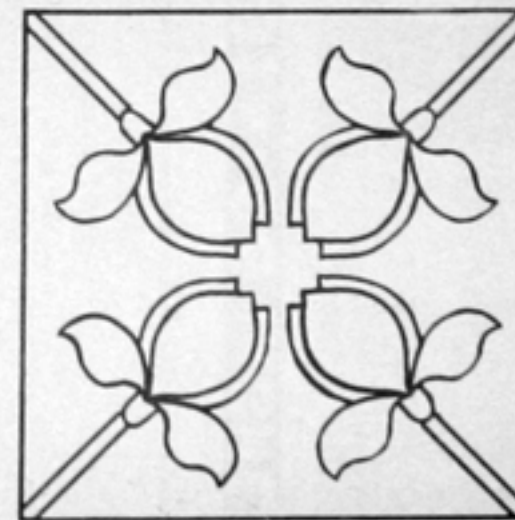
QUILTING DIRECTIONS

We have given you our suggestions on the diagram of this quilt. The feather border and circle are perforated through the pattern and directions for use included. The remainder of the design is merely an outline of the applique pieces continued until pattern is complete. The outlines are shown 1/8" apart, however if finer quilting is desired they may be 1/4" apart. The entire quilting design may be marked on the quilt top before putting into the frame, or you may mark a small portion either with pencil or by scratching with your needle as your quilting proceeds. Professional quilters stitch from 10 to 14 stitches to an inch. When marking the design be careful not to mark too heavily. The pencil marks may be removed with an art gum eraser when quilting is completed.

THESE ARE ACTUAL SIZE PATTERNS NO SEAM ALLOWANCE



Copyright 1943
NOTICE
Wrappers for Cotton Batting having marking patterns for Quilts printed thereon are fully protected and are exclusive with The Stearns & Foster Company.
ALL RIGHTS RESERVED
THE STEARNS & FOSTER COMPANY
Lockland, Cincinnati, Ohio



MOUNTAIN MIST PERFORATED QUILTING PATTERNS

Beginning with Pattern No. 76 of our Series, a quilting pattern will be perforated through the Mountain Mist wrapper. In cases where the perforated pattern is not suited to the design of the printed quilt pattern, it is intended that the pattern be saved for future use on another quilt.

DIRECTIONS FOR USING PERFORATED PATTERNS

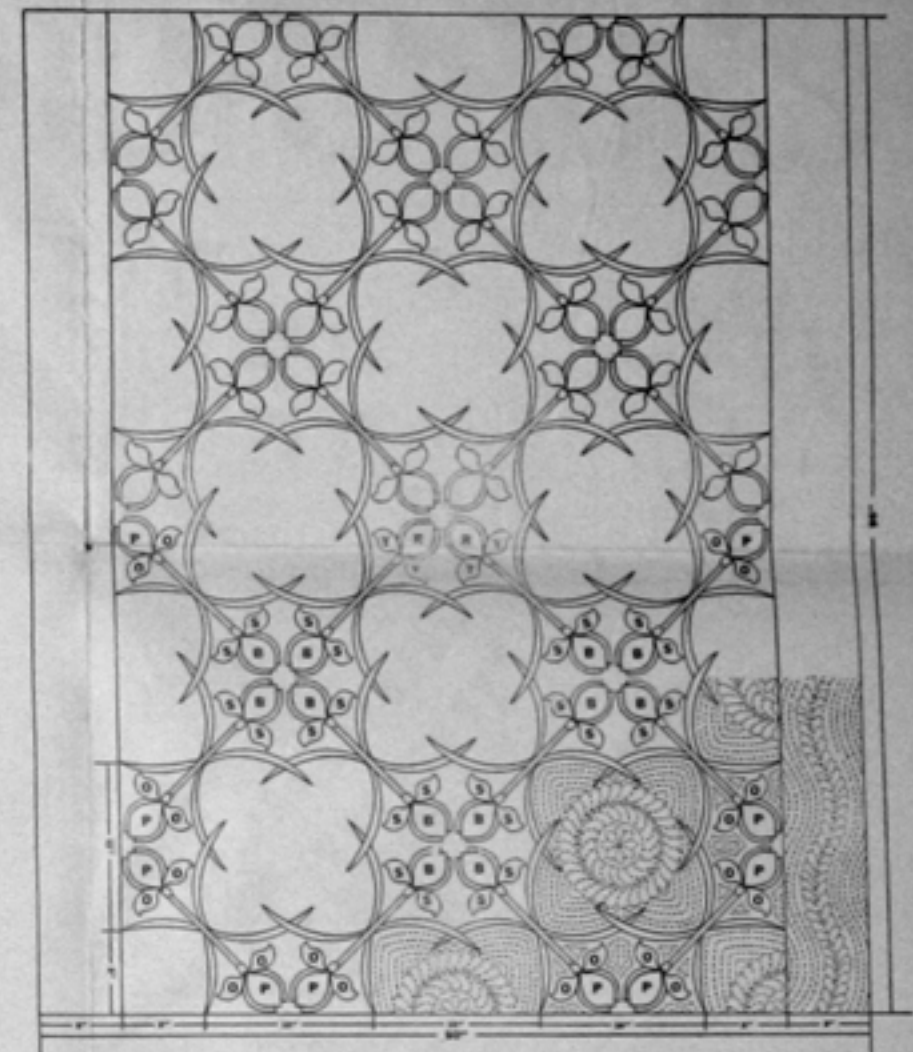
To mark cloth with powder through a perforated pattern, place it on a firm surface such as a table top. You will notice the perforations are smooth on the side of the colored printing and somewhat rough on the side printed in black. Place smooth side of pattern next to the cloth and give it hold in proper position. For clear marking have as little movement as possible between pattern and cloth. If you wish a heavier marking, smooth the rough side of the pattern with sandpaper which will make the perforations a little larger.
MARKING POWDER. If you do not have marking powder you can mix it easily yourself. From any drug store buy 1/2 lb. worth of Powdered Ultra-marine (a blue powder) and mix 1 teaspoonful of it with 4 teaspoonfuls of ordinary powdered cornstarch. Or you may use powdered cinnamon or rice (ground thoroughly so it is green).
TO USE MARKING POWDER. Make a little powder puff with cotton covered with soft cloth; place powder in a saucer, dip puff in powder and lay it over the perforation to smooth powder evenly. Then rub it lightly with a smoothing motion to work powder through the perforations. Remove pattern and blow off excess powder on the cloth. Do over design with a soft lead pencil or scratch the design with a needle—whichever the powder shows more distinct with the handling of the cloth.

TO PURCHASE SEPARATE PERFORATED PATTERNS

MOUNTAIN MIST PERFORATED QUILTING PATTERNS are published at irregular intervals in sheets 13 by 36 inches. The number of designs on each sheet, depending on the size of the design, is not possible to offer individual designs separately and we cannot make any substitutions or interchange of designs from one sheet to another.

THE PRICE of the patterns is 15c per sheet. However, they may be ordered at a Special Price of "Ten Sheets for 10c" (we do not mean one sheet for 10c) if you Mountain Mist Pattern Coupon accompanies the order. The "Pattern Coupon" is printed on the wrapper that comes around the set of MOUNTAIN MIST QUILTING COTTON—"The Perfect Filling for Quilts." For sale at Dry Goods and Department Stores. Orders for patterns should be sent to The Stearns & Foster Co., Lockland, Cincinnati, Ohio.

DIAGRAM OF THE QUILT—FINISHED DIMENSIONS



YARDAGE CHART

(Calculated for Material 36" Wide)

LIGHT GREEN	2 Strips 8 1/2" x 96 1/2"	6 Yards
	15 Blocks 8 1/2" Square	
	16 Blocks 8 1/2" x 4 1/2"	
	4 Blocks 4 1/2" Square	
MEDIUM GREEN		3 Yards
Part No. 4	48 Pieces	
Part No. 5	20 Pieces	
Part No. 6	76 Pieces	
1" Bias Strips 11"	24 Pieces	
PURPLE (P)		1/2 Yard
Part No. 1	20 Pieces	
ORCHID (O)		1/2 Yard
Part No. 2	40 Pieces	
Part No. 3	40 Pieces	
DARK BLUE (B)		1/2 Yard
Part No. 1	24 Pieces	
LIGHT BLUE (S)		1/2 Yard
Part No. 2	48 Pieces	
Part No. 3	48 Pieces	
ORANGE (R)		1/12 Yard
Part No. 1	4 Pieces	
YELLOW (Y)		1/2 Yard
Part No. 2	8 Pieces	
Part No. 3	8 Pieces	