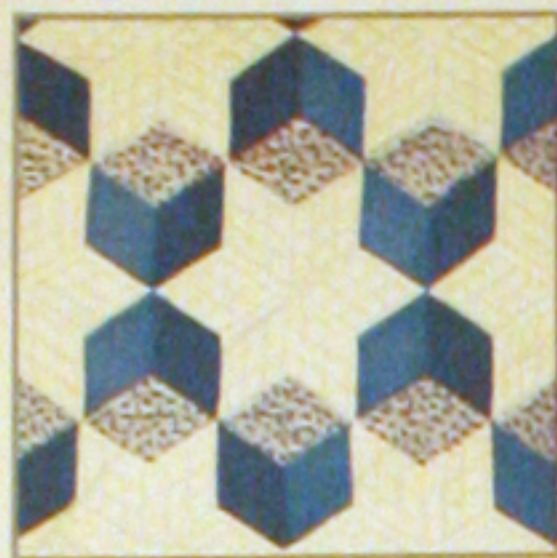




36--ROYAL CROWN



37--TUMBLING BLOCKS



38--DANCHO DAZEDOLLS



39--STAR EIGHT



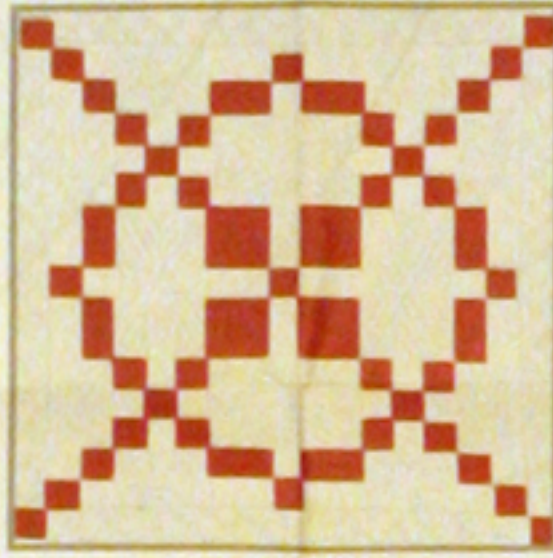
40--POINSETTIA



41--WATER LILIES



42--MARTHA'S VINEYARD



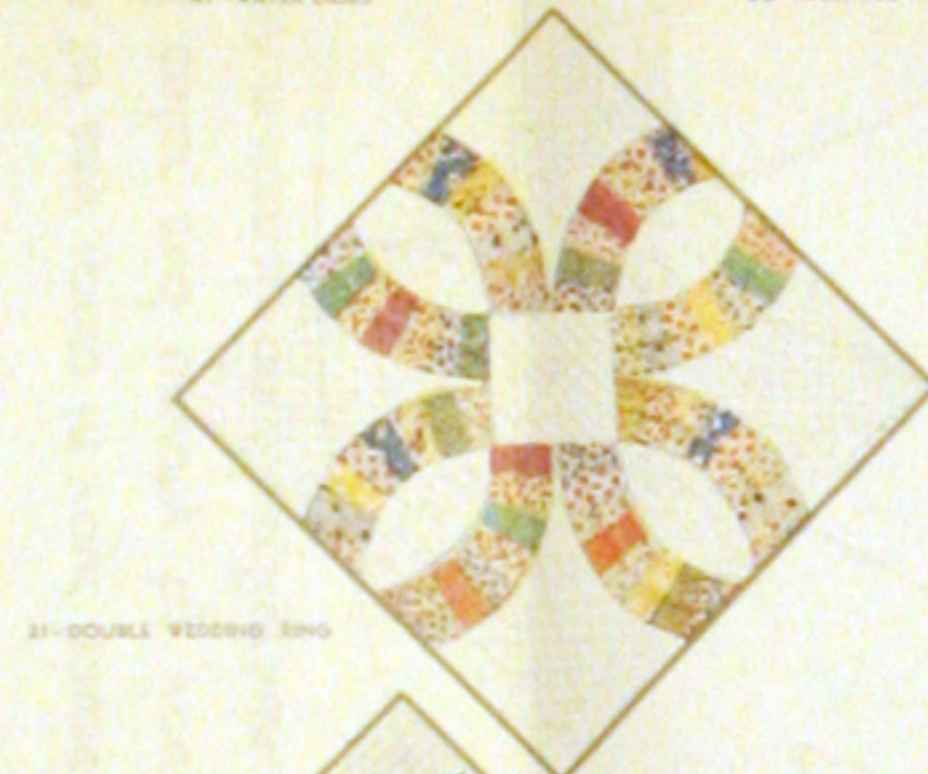
43--HONEYSPUN



44--SUNFLOWER



45--IRIS



46--DOUBLE WEDDING RING



47--THE LONE STAR



48--GRANDMOTHER'S FLOWER GARDEN



49--APPLE BLOSSOMS



50--COUNTRY GARDENS

1 lb. 3 oz.

ONE SEAMLESS SHEET

FULL QUILT SIZE - 81 BY 96 INCHES

MOUNTAIN MIST

REG. U.S. PAT. OFF. AND IN CANADA

NEEDLE-EASY "GLAZENE" QUILTING COTTON

Uniform in Thickness • Does Not Stretch Thin • Makes a Quilt That Will Wash Beautifully

THE STEARNS & FOSTER COMPANY
LOCKLAND, CINCINNATI, OHIO

Guaranteed by the Manufacturer
100% NEW COTTON FIBER
NO SECOND-HAND MATERIAL

N. Y. REGISTRY No. 9



51--TURKEY TRACKS



52--NEW YORK BEAUTY



53--BOGWOOD



54--BOSTON COMMONS



55--COUNTRY LANES



56--ROLLS ARE RED



57--OHIO HOSE



58--DRESSER PLATE



59--DASHY CHAIR



60--ROSEBUSHES



61--DEEP PEACHES



62--PURNING GLORY



63--THE PALMS

QUILT PATTERN COUPON
HOW TO ORDER PATTERNS

Printed on the other side of this wrapper you will find one of our latest quilt patterns. If it does not suit your needs and you will send us this coupon we will send you your choice of any of the patterns illustrated in color on this wrapper or illustrated in our pattern catalog for 10c each. The regular price of our patterns is 25c each.

THE STEARNS & FOSTER CO., Lockland, Cincinnati, Ohio, U. S. A.

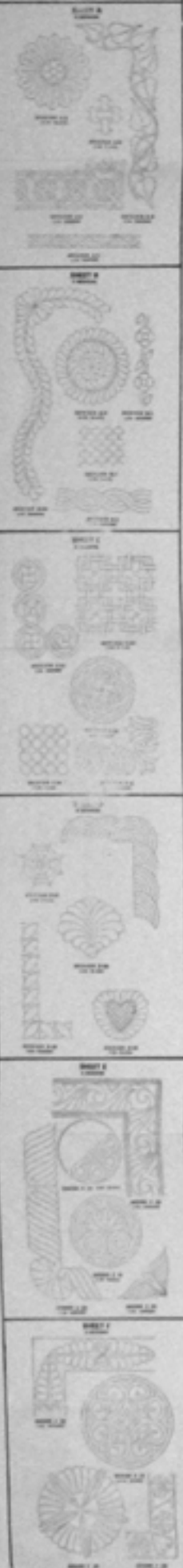
My Name _____
Street and Number _____
City and State _____
Name of Blank Where I Bought this Quilt _____

THIS OFFER SUBJECT TO WITHDRAWAL WITHOUT NOTICE

QUILTING PATTERNS

MOUNTAIN MIST QUILTING PATTERNS are published in sizes 22 by 26 inches. The number of designs varies depending on the size of the design. It is not possible to offer individual designs for sale. We make our publications in color-change designs from one color to another. Instructions for using the patterns are printed on each sheet.

THE PRICE OF THE PATTERNS is 25c per sheet. However, they may be ordered at a special price of 75c dozen for 25c each. Do not order one sheet for 25c. If you Mountain Mist Pattern Company representative for you. The Pattern Catalog is printed on the wrapper of Mountain Mist Quilting Cotton which is sold in Dry Goods and Department Stores. Send orders for Patterns to Stewart & Foster Co., Lockland, Cincinnati, Ohio.



"RING AROUND THE POSIE"

Pattern No. 95 of the Mountain Mist Series
(An Appliqued Quilt)

A cheerful pot of flowers is an addition to any room in your house. So we give you this new quilt to add color and beauty to your bedroom. It may be made of print or plain materials on a background

of white or pastel blue or green to suit the color scheme you have chosen. We know that you will not only enjoy making this simple design but will be proud of the finished quilt.

DIRECTIONS

- 1—First make natural size patterns for all of the Parts as numbered. To do this trace the outlines through thin paper, paste on cardboard or the smooth side of sandpaper, cut out exactly along pencilled lines. Or, transfer directly with carbon paper. Sandpaper patterns, placed rough side down on the goods, will not slip while marking. Mark the Part number on each pattern. It is well to make several patterns for each Part since there are so many pieces to be cut from each that one pattern may become worn.
- 2—If there is any doubt about the fastness of the colors of your material, or if there is danger of shrinkage, be sure to wash and iron it before cutting. (Note: If the material for the top is washed, also shrink that to be used for quilt back.)
- 3—From the print material cut the required number of pieces for Part 1—see Yardage Chart. Allow 1/8 inch seams on each. Mark around the Part pattern on the right side of the material. DO NOT CUT ALONG THESE LINES which remain to show exactly where to turn under the seams for basting.
- 4—Next cut the Parts for the leaves from the light green material, and the flower pot and interlocking circles from the dark green material. Cut these pieces in the same manner as Part 1, allowing for seams. When all Parts are cut place in groups by Part number and fasten with a single stitch so that they will be ready for use and not lost or mislaid.
- 5—Locate the center of central panel which measures 48 inches by 32 inches when finished. Center the diagram of the circle under the material and trace the outlines lightly on the right side of the background. Continue the pattern by moving the pattern so that the next circle to be drawn overlaps the other as shown in the Diagram of the Quilt.

After this is complete baste the Parts to the background ready for appliqueing. Wherever possible, save a seam by placing one Part over the rough edge of another and appliqueing.

6—The outer border can be marked in the same way, adding the Part curves to finish the edge. Be sure the Part curves are even with the joining of the other parts. To do this, rule straight lines to indicate the 8" width. The border measures 80 inches by 8 inches for the ends and 80 inches by 8 inches for the sides. The outside edges of border may be cut away from the curves of the design leaving a seam allowance so that when finishing the outside after quilting you may turn them under front and back and whip the edges.

7—When the center panel and borders have been finished, join with the plain inner panels to complete the quilt top. Press the top and back to assure accuracy. You are now ready for the actual quilting. (see Quilting Directions). When this has been done remove from the frame, whip the edges together.

—QUILTING DIRECTIONS—

We have given you our suggestions for quilting on the Diagram of the Quilt. The curved lines may be drawn with a large compass or a string fastened to the center of the curve, with a pencil at the other end. The lines may be 1 or 1/2 inch apart. We also suggest that each part be quilted about 1/4 inch from the edge so that the design of the quilting on the back of your quilt will be equally as beautiful as the front. You may either mark the entire quilting design before placing in frame or small sections as the quilting progresses.

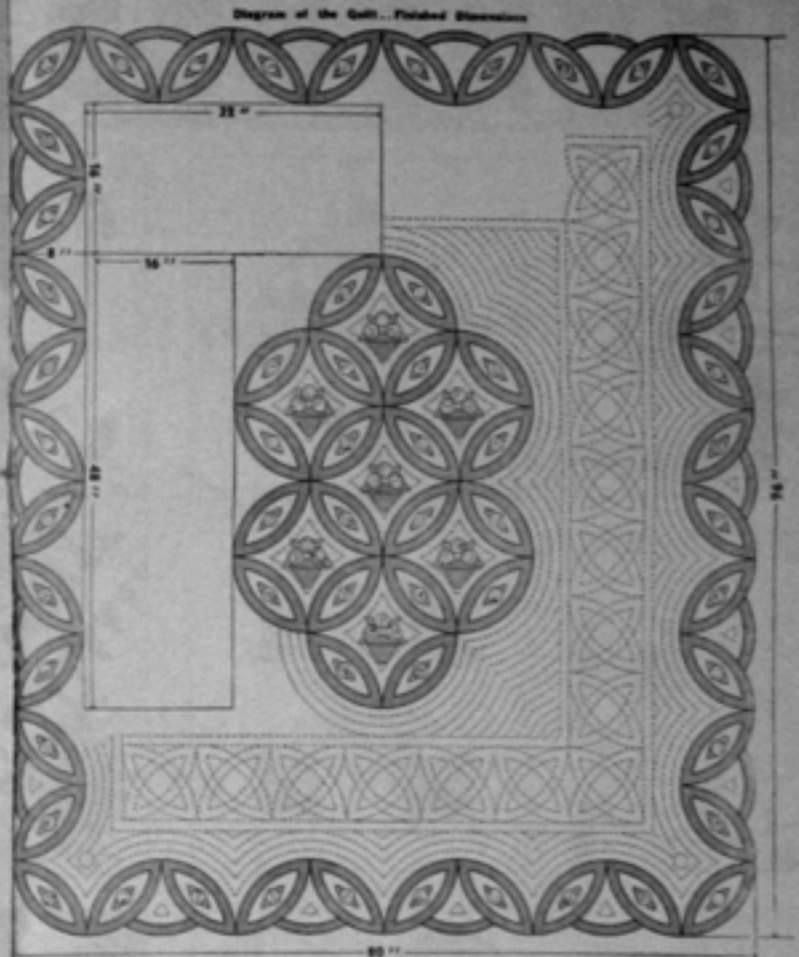
Use a well sharpened soft pencil to do the marking, being careful not to mark too heavily. These lines may be removed with an Art Gum Eraser when the stitching has been done. If marking a small portion at a time, the design may be scratched with a needle.

After the quilt has been marked for the back to the quilting frame, spread on the Mountain Mist Cotton and lay on the quilt top. Stretch and fasten the entire quilt in the frame. You are now ready for the actual quilting. Professional quilters stitch from 10 to 14 stitches to an inch.

—YARDAGE CHART—

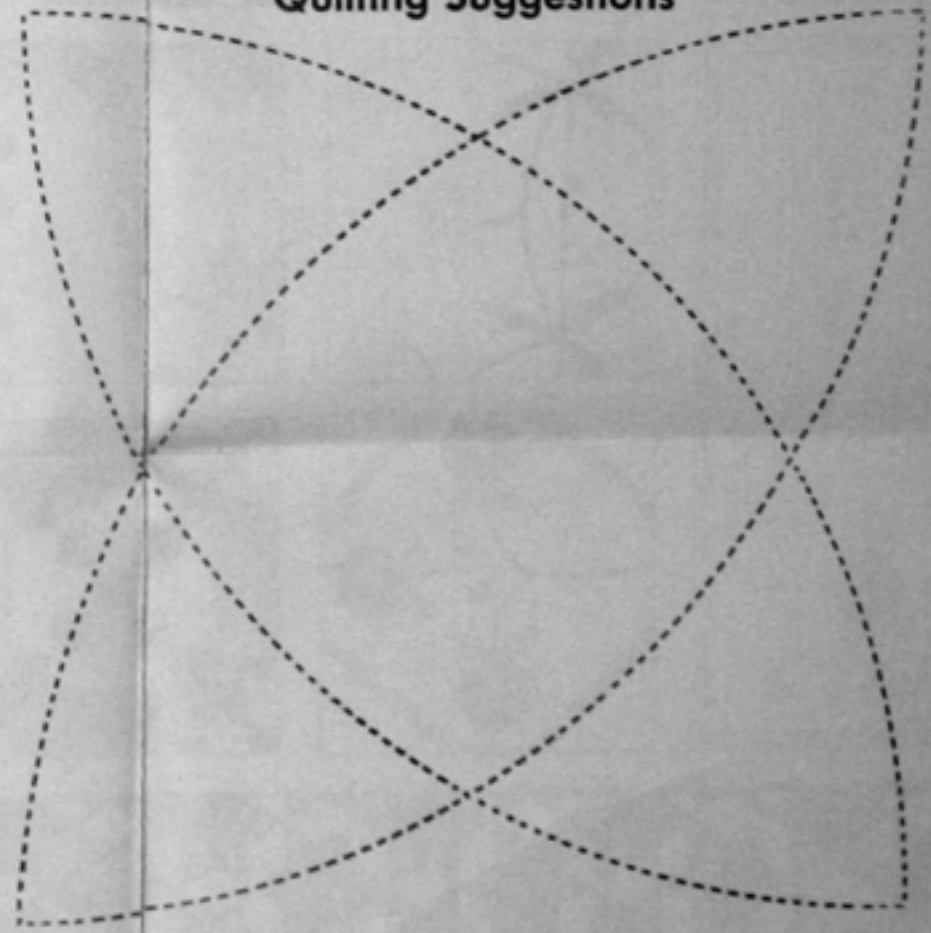
(Material 36 inches wide)

PRINT MATERIAL	1/2 Yard
Part 1	81 pieces needed
LIGHT GREEN MATERIAL	1/2 Yard
Part 2	148 pieces needed
DARK GREEN MATERIAL	1 1/2 Yards
Part 3	7 pieces needed
Part 4	7 pieces needed
Part 5	123 pieces needed
Part 5	18 Part pieces needed for border
WHITE MATERIAL	6 1/2 Yards
Background Panels	6 1/2 Yards
Back of quilt	6 1/2 Yards



Flora Edwards
Original Design

Quilting Suggestions



Copyright 1948
NOTICE
Wrappers for Cotton Basting having working patterns for Quilts printed thereon are fully protected and you will receive with The Stewart & Foster Company.
ALL RIGHTS RESERVED
THE STEWART & FOSTER COMPANY
Lockland, Cincinnati, Ohio