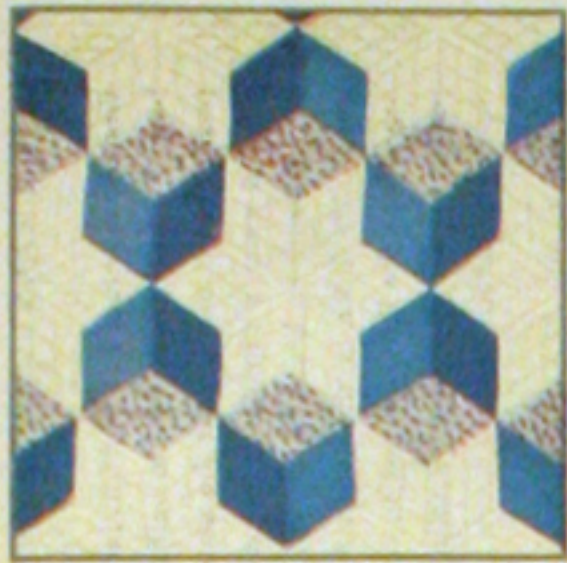




78-FLORAL CAMEO



4-TUMBLING BLOCKS



24-DANCING BAFFOILS



70-STAR BRIGHT



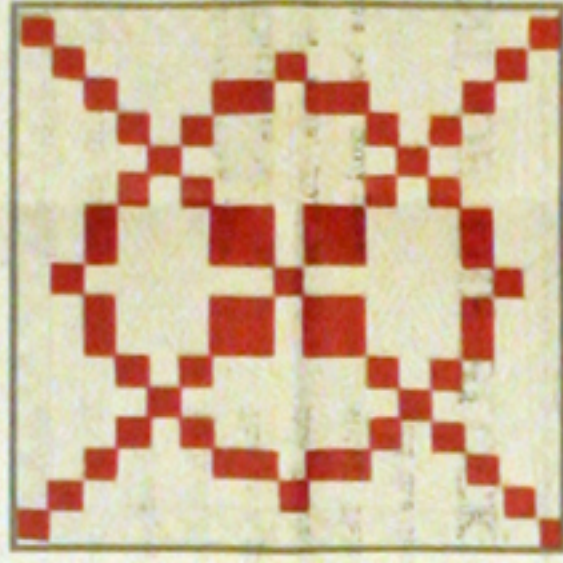
39-POINSETTIA



47-WATER LILIES



28-MARTHA'S VINEYARD



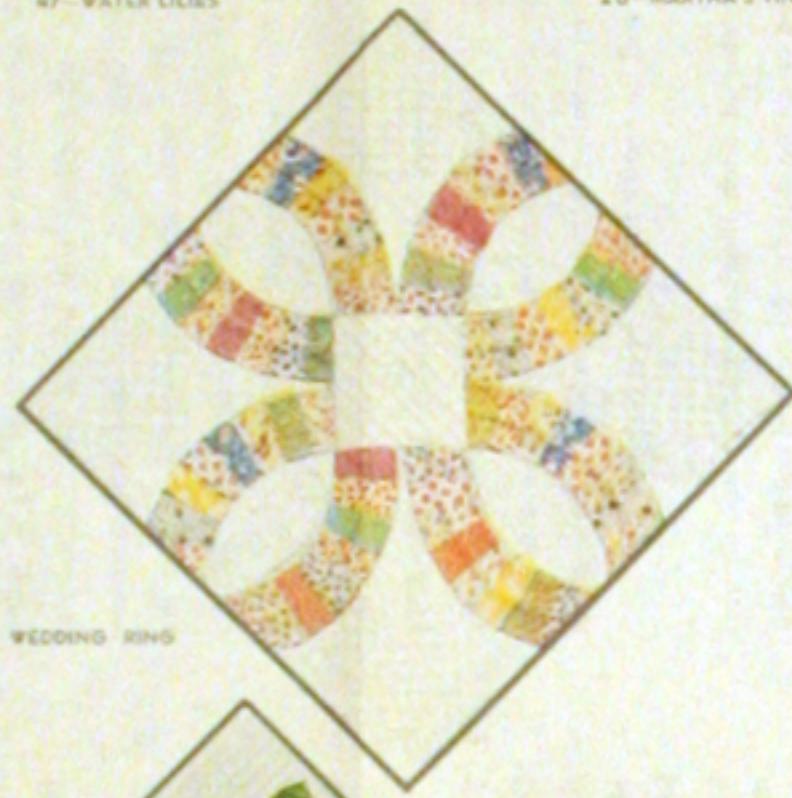
34-HOMESPUN



7-SUNFLOWER



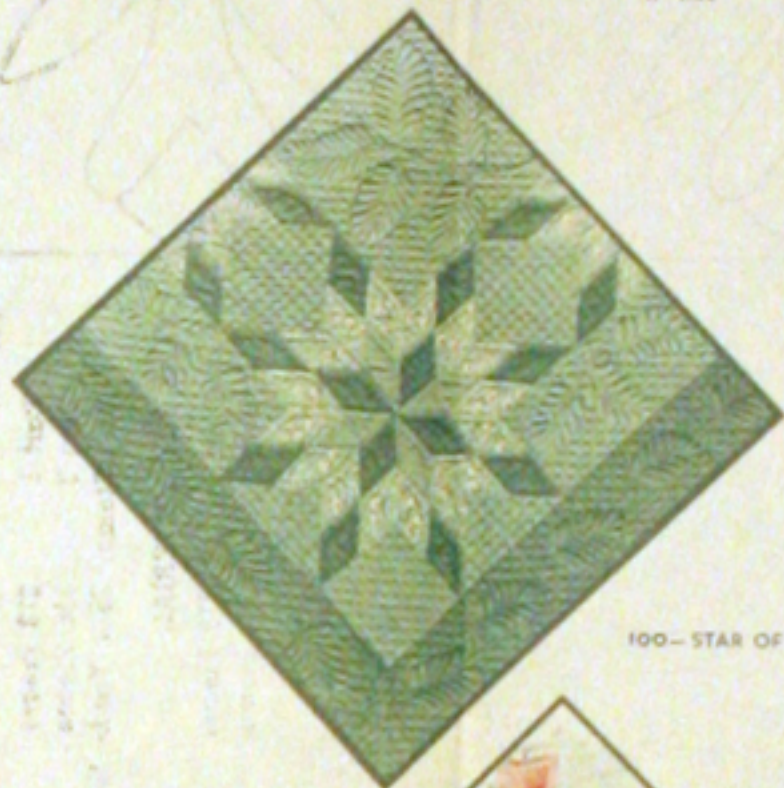
8-IRIS



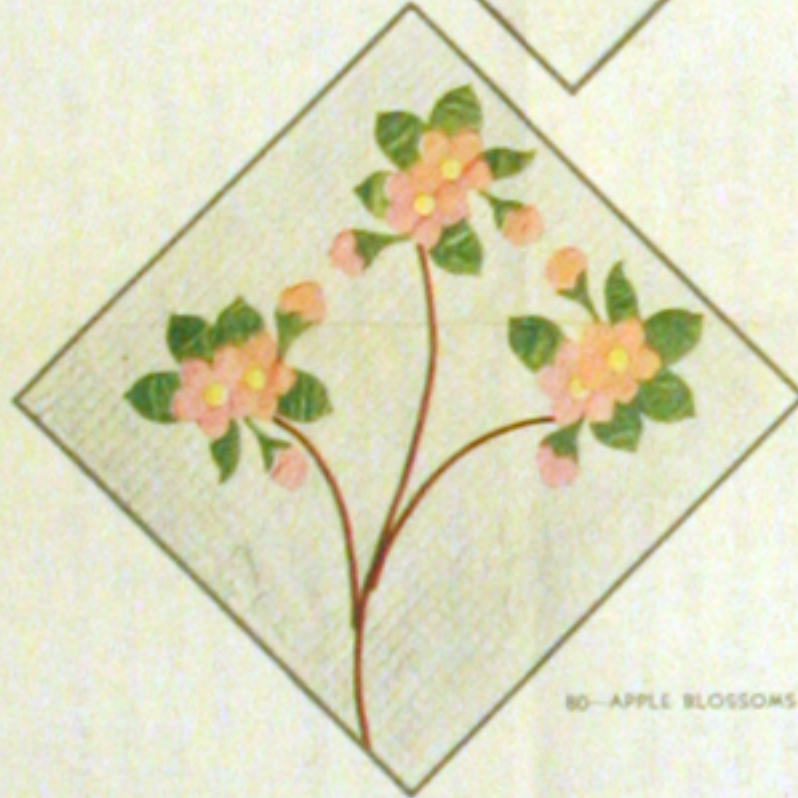
21-DOUBLE WEDDING RINGS



5-THE LONE STAR



100-STAR OF BLUEGRASS



80-APPLE BLOSSOMS



83-COUNTRY GARDENS

**Save THE QUILT PATTERN**  
 which is printed on reverse side of this wrapper.  
 You may obtain the pattern for any quilt design  
 illustrated by using the coupon which is printed  
 in the lower right-hand corner of this wrapper.

1 lb. 3 oz.

ONE SEAMLESS SHEET

FULL QUILT SIZE - 81 BY 96 INCHES

# MOUNTAIN MIST

REG. U.S. PAT. OFF. AND IN CANADA

NEEDLE-EASY "GLAZENE" FILLING for QUILTS

Uniform in Thickness • Does Not Stretch Thin • Makes a Quilt That Will Wash Beautifully

THE STEARNS & FOSTER COMPANY  
LOCKLAND, CINCINNATI, OHIO

Form 106  
© 1954 S & F CO.  
LITHO. IN U.S.A.

Guaranteed by the Manufacturer  
100% NEW 50/50 MATERIAL  
OHIO REGISTRY No. 52



23-TURKEY TRACKS



8-NEW YORK BEAUTY



19-DOGWOOD



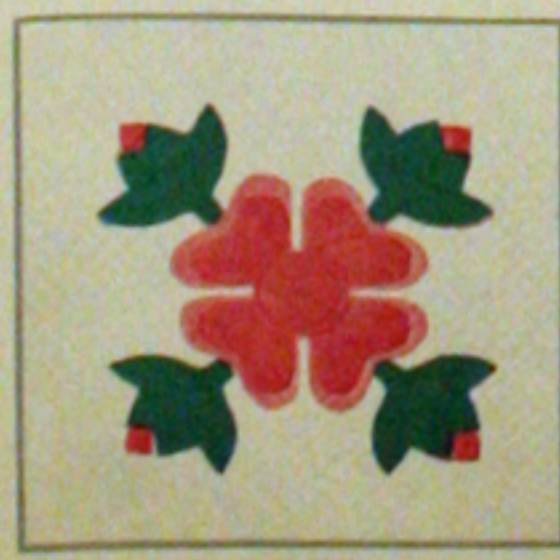
30-BOSTON COMMONS



64-COUNTRY LANES



93-SPRING WREATH



20-OHIO ROSE



75-GREEN PLATE



76-DAISY CHAIN



81-POMEGRANATES

#106 The Victorian Quilt

# THE COLUMBINE QUILT

Pattern No. 106 of the Mountain Mist Series

(An Appliqued Quilt)

Out of a corner of the attic, where it had been forgotten, came this antique design. The patterns for cutting the pieces were found with the partially made quilt and were made from an old newspaper dated 1869. The original quilt was made of old fashion dark green and red calico on an unbleached muslin background.

In drawing this pattern for you we were reminded of the Columbine flower and decided to call it just that. Since the Columbine is the favorite flower of our First Lady, we dedicate this new "antique" quilt to Mrs. Eisenhower.

## DIRECTIONS

1. First make actual size patterns for all of the Parts as numbered. To do this trace the outlines through thin paper, paste onto cardboard or the smooth side of sandpaper, cut out exactly along the pencilled lines. Or, transfer directly with carbon paper. Sandpaper patterns placed rough side down on the goods, will not slip while marking. Mark the Part number on each Part. Make several patterns for those Parts requiring many pieces — since the patterns may become worn.
2. If there is any doubt about the fastness of the colors of your material, or if there is a possibility of shrinkage; be sure to wash and iron it before marking the cutting. (Note: If the material for the top is washed, also shrink that to be used for the quilt back.)
3. Before cutting the blocks or pieces as shown on the Yardage Chart, cut the bias strips required. Cut these  $\frac{1}{4}$ " wide so that the finished strips will measure  $\frac{3}{8}$ " wide. Fold so that the edges meet at the center of the back and press lightly.

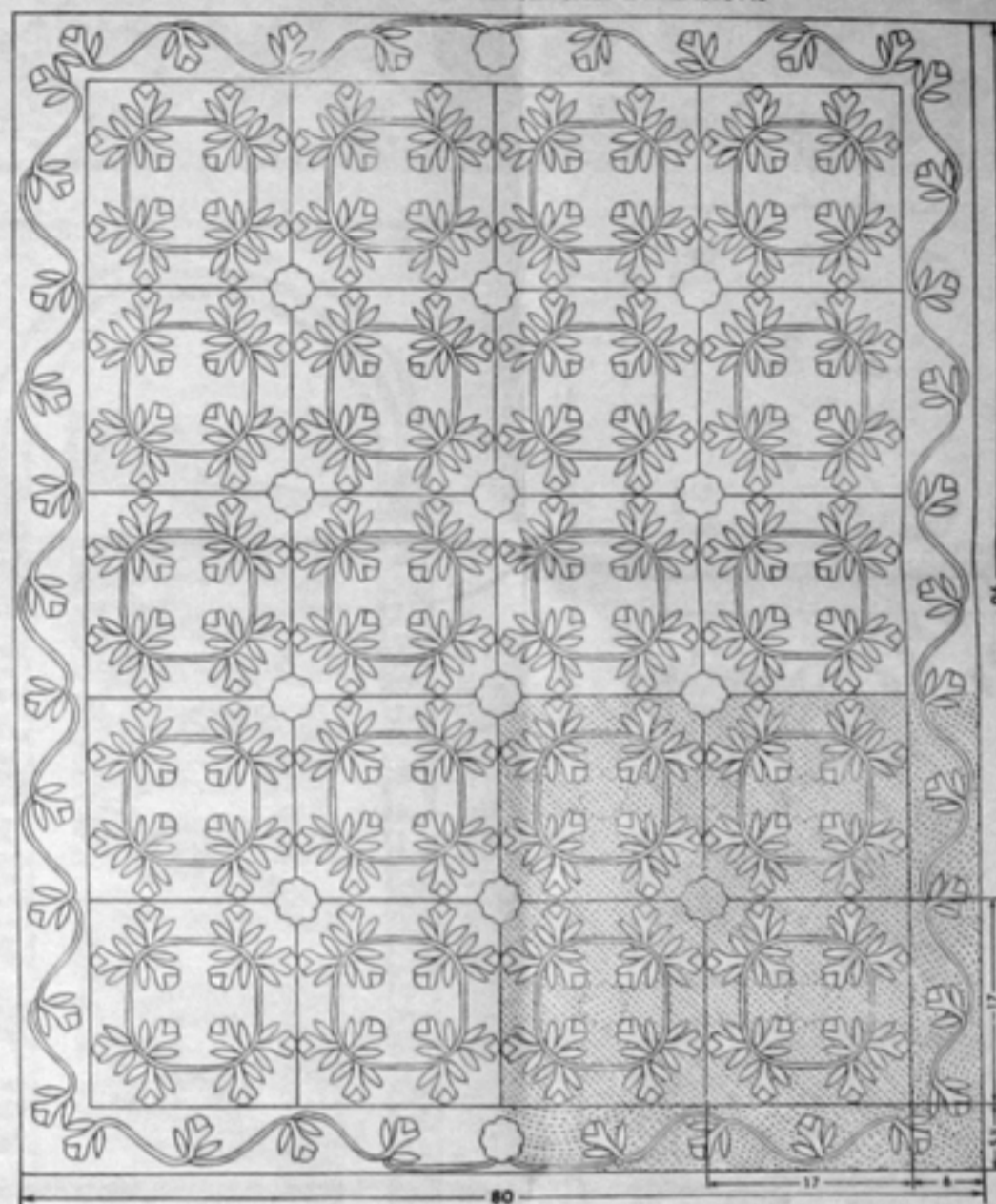
4. From the white material take off the Border Strips. The side borders will be cut  $96\frac{1}{2}$ " long and  $5\frac{1}{2}$ " wide which allows for  $\frac{1}{4}$ " seams and will measure 96" by 6" when finished. The end borders will be cut  $68\frac{1}{2}$ " long and 6" wide which will allow  $\frac{1}{4}$ " seams and will measure 68" long and  $5\frac{1}{2}$ " wide when finished. Now cut the 20 Blocks  $17\frac{1}{2}$ " square which will allow for  $\frac{1}{4}$ " seams. The finished Block will measure 17" square.
5. Next mark each Part. To do this mark around each Part pattern on the right side of the material. DO NOT CUT ALONG THESE LINES, which remain to show exactly where to turn under for basting. Keep these pieces in groups by Part number and fasten with a single stitch so that they will be ready for use and not lost.
6. Locate the center of each Block by folding end to end both ways and creasing lightly. Be careful not to stretch the Block when creasing. With these creased lines marking the Block into quarters, place the flowers as shown on the Arrangement of the Block. Turn under and baste each piece before placing on the Block. Baste into position and applique. Where ever it is possible, place rough edges under the appliqueing to avoid a seam. This will include such edges as the ends of the leaves and the red bud edges falling under Part 1 — the stem. When the buds and leaves are in place, lay on the bias stem wreath. The straight lines of the wreath fall 3" from the edge of the Block. The curves fall evenly between the straight sides. This stem wreath will cover the ends of the stems and the leaves.

7. You are now ready to join the Blocks. Follow the Diagram of the Quilt and join the Blocks with the buds together. When this is done place the full flowers — Part 4 — on the joined corners of the Blocks (see Diagram).
8. The main part of the quilt is now complete. Add the border strips and place the buds as shown on the Diagram. They will fall at the center and edge of each Block in alternate directions, with a full flower at the center of the top and bottom to reverse the border. The bias strips of green are added in natural curves.
9. You are now ready for the quilting as described in our QUILTING SUGGESTIONS. Mark the quilting design on the top, fix the back to the quilting frame, spread on the Mountain Mist Cotton, lay on the quilt top, stretch, and fasten the entire quilt in the frame. Quilt the design with fine stitches — from 10 to 14 to an inch. When the quilting is completed, remove from the frame and bind the edges with a narrow binding which may be either of the colors used, or the background material.

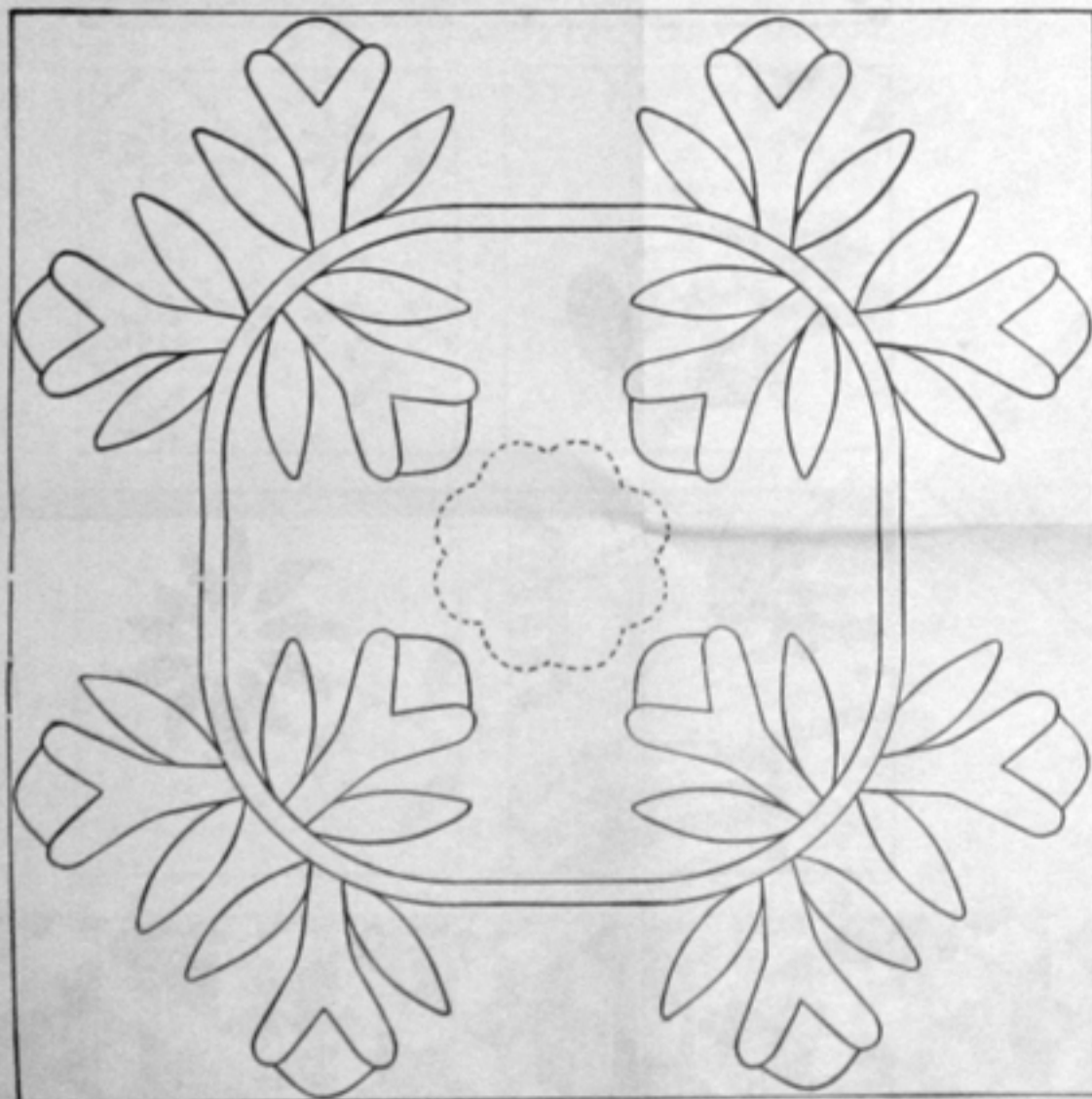
## QUILTING SUGGESTIONS

Follow the Diagram of the Quilt from the quilting design. Since the pattern of the applique covers the entire quilt, we suggest that you emphasize it by using diagonal straight lines for quilting. These must be no more than  $\frac{1}{4}$ " apart. In the center of the wreath use Part 4 to mark a quilted flower to break the straight line quilting. When marking the quilting design be sure not to mark too heavily. The straight lines may be drawn with a yard stick, using a soft pencil with a very sharp point. The pencil lines may be removed with art gum eraser when the quilting is complete.

DIAGRAM OF THE QUILT FINISHED DIMENSIONS



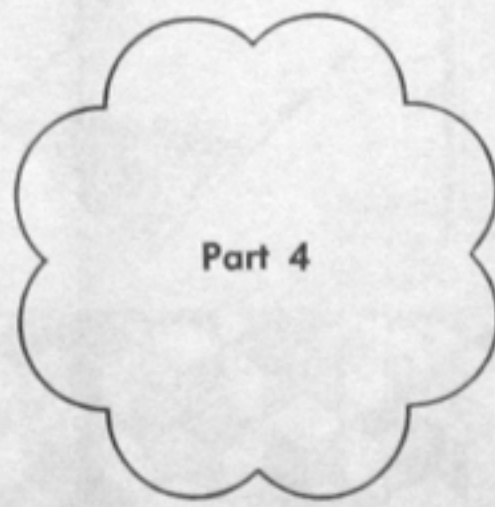
## ARRANGEMENT OF THE BLOCK



## YARDAGE CHART

(Material 36" Wide)

<b>DARK GREEN MATERIAL</b> . . . . .	<b>5 1/2 Yards</b>
Part 1 . . . . .	278 Pieces
Part 3 . . . . .	556 Pieces
Bias Stems $75\frac{1}{4}$ Yards $\frac{1}{4}$ " wide	
<b>DARK RED MATERIAL</b> . . . . .	<b>1 1/2 Yards</b>
Part 2 . . . . .	278 Pieces
Part 4 . . . . .	14 Pieces
<b>WHITE MATERIAL</b> . . . . .	<b>14 Yards</b>
20 Blocks — $17\frac{1}{2}$ " x $17\frac{1}{2}$ "	
2 Borders — $96\frac{1}{2}$ " x $6\frac{1}{2}$ "	
2 Borders — $68\frac{1}{2}$ " x 6"	
Material for Back — 7 Yards	



## ACTUAL SIZE PATTERNS

(No Allowance Made for Seams)

