



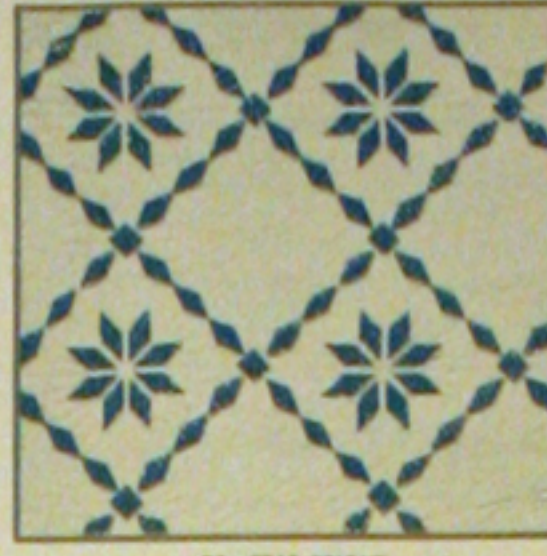
74-FLORAL WREATH



A-TUMBLING BLOCKS



103-DEW DROP



70-STAR BRIGHT



29-POINSETTIA



47-WATER LILIES



28-MARTHA'S VINEYARD



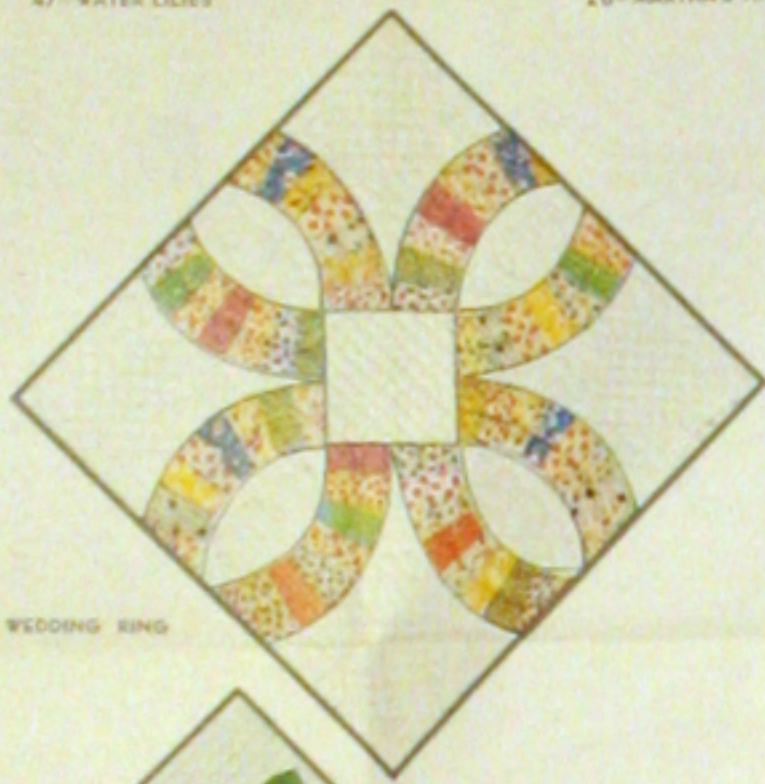
34-HOMESPUN



P-SUNFLOWER



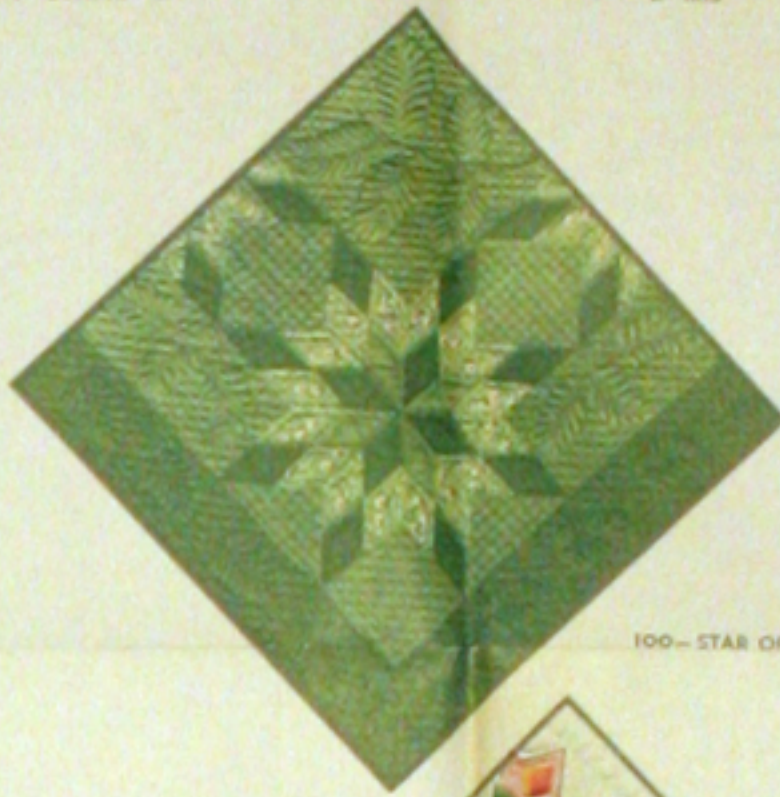
B-IRIS



21-DOUBLE WEDDING RING



F-THE LONE STAR



100-STAR OF BLUEGRASS



80-APPLE BLOSSOMS



83-COUNTRY GARDENS

Save **THE QUILT PATTERN** which is printed on reverse side of this wrapper. You may obtain the pattern for any quilt design illustrated by using the coupon which is printed in the lower right-hand corner of this wrapper.

1 lb. 5 oz.

ONE SEAMLESS SHEET

EXTRA LARGE SIZE - 81 BY 108 INCHES

MOUNTAIN MIST

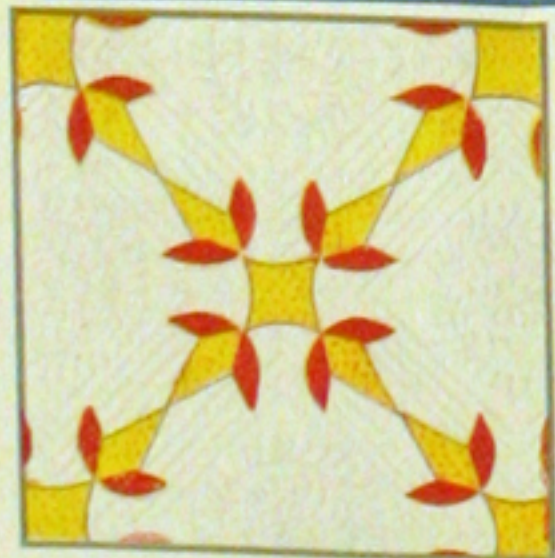
REG. U.S. PAT. OFF. AND IN CANADA

NEEDLE-EASY "GLAZENE" FILLING for QUILTS

Uniform in Thickness • Does Not Stretch Thin • Makes a Quilt That Will Wash Beautifully

THE STEARNS & FOSTER COMPANY LOCKLAND, CINCINNATI OHIO

Guaranteed by the Manufacturer
100% NEW SAF EURENBERG
OHIO REGISTRY NO. 52



33-TURKEY TRACKS



X-NEW YORK BEAUTY



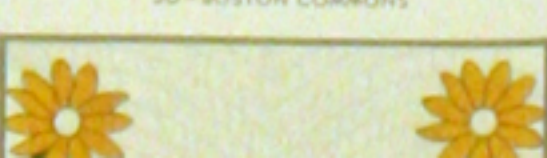
39-DAISY DOG



30-BOSTON COMMONS



64-COUNTRY LANES



#107
Pines Bay

"SMALL FRY" - Child's Quilt

Pattern No. 107 of the Mountain Mist Series

(An Appliqued Quilt)

Nothing is more appealing than children in calico and denim on a farm or anywhere else, for that matter. Because of numerous requests for this pattern we have designed our version of the sunbonnet girl and her brother, the straw hat boy. We give you this quilt in crib size, 45 inches by 60 inches and hope that you will enjoy making it for the little folks in your family. One roll of 81x96 Mountain Mist cotton is enough to fill two of these quilts or to make one of double thickness.

DIRECTIONS:-

1. First make actual size patterns for all of the Parts as numbered. To do this trace the outlines through this paper, paste onto cardboard or the smooth side of sandpaper, cut out exactly along the pincalled lines. Or, transfer directly with carbon paper. Sand paper patterns placed rough side down on the goods, will not slip while marking. Mark the Part number on each Part.
2. If there is any doubt about the fastness of colors of your material, or if there is a possibility of shrinkage, be sure to wash and iron it before marking and cutting. (Note: if the material for the top is washed, also shrink that to be used for the quilt back.)
3. From the white material cut the background blocks before cutting the pieces for the figures. These blocks should be cut 11 1/2 inches square to allow for 1/2 inch seams all around. The end borders will measure 44 1/2 inches long by 8 1/2 inches wide. There will be 16 of the squares needed.
4. Before marking the Parts, cut bias strips from each color (see yardage chart). Next mark each Part from remaining material. To do this mark around each Part Pattern on the right side of the material. DO NOT CUT ALONG THESE LINES, which remain to show exactly where to turn under for basting. Place Parts in groups by Part number and fasten with a single stitch so that they will be ready for use and not lost.
5. Following the arrangement of the figures lay the Parts on the center of each block. Baste into position and applique. Wherever it is possible, place rough edges under the applique to avoid an extra seam. The pieces for the bands of the hats will be bias strips covering the raw edges of the hat parts. Cut these bias strips 1/2 inch wide,

turn under the edges so that they meet at the center of the back and press lightly. The finished bias will then measure 1/2 inch. When each part has been basted into the proper position, applique with fine shadow stitches.

6. The center garden is made up of four 11 inch squares (plus seam allowance). Sew these squares together and locate the tulips as shown on the Diagram of the Quilt. The circle of flowers will fall 1 1/2 inches from the edges of the center blocks. Join the parts of the butterfly and locate exactly in the center of the garden. Baste and applique the entire garden.

7. You are now ready to join the blocks. Follow the Diagram of the Quilt and join the blocks with the children and butterflies to the center garden blocks. To this add the end border with the tulips appliqued as shown.

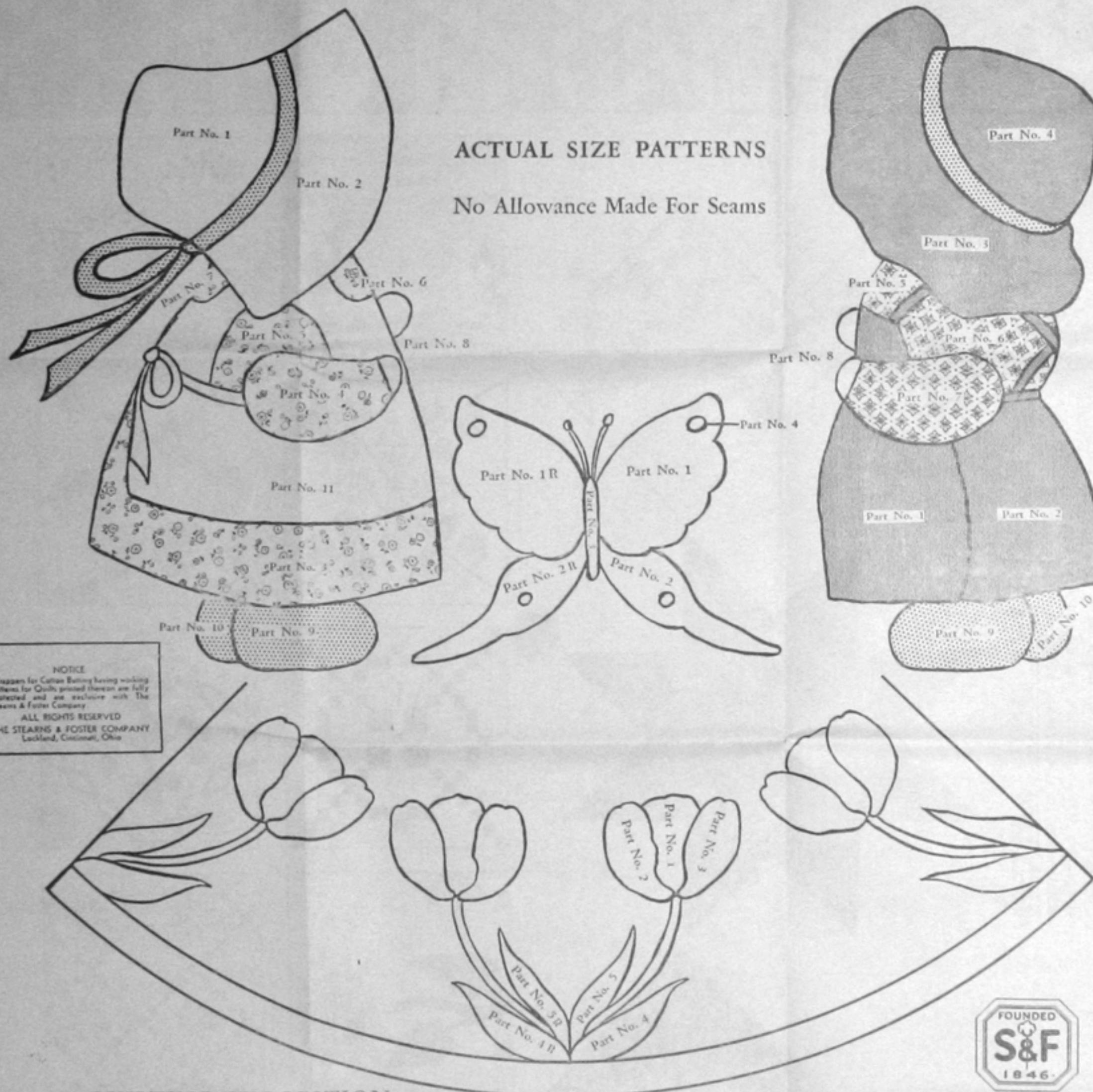
8. You are now ready for the quilting as described in our Quilting Suggestions. Mark the quilting design on the top. Fix the back to the quilting frame, spread on the Mountain Mist Cotton. Lay on the Quilt Top, stretch and fasten the entire quilt in the frame. Quilt the design with fine running stitches - from 10 to 14 to an inch. When the quilting is completed, remove from the frame and bind the edge with a narrow binding which may be any of the colors used or the background material.

QUILTING SUGGESTIONS

We suggest that straight line quilting will make the little figures of this quilt stand out very beautifully. Draw the lines diagonally each way forming diamonds on a background. If you prefer a more elaborate quilting pattern you may use the butterfly as a quilting design. Place quilted butterflies in the corners of the garden block and the corners of the quilt at the ends of the tulip rows. Use a yard stick to draw the straight-line marking with a soft pencil with a very sharp point. The pencil lines may be removed with "art gum" eraser when the quilting is complete. The background quilting of the garden block is in the spider web design. We give you the central part of the web. Place this on the center of the garden, extend the straight lines to the edges of the block and complete the web.

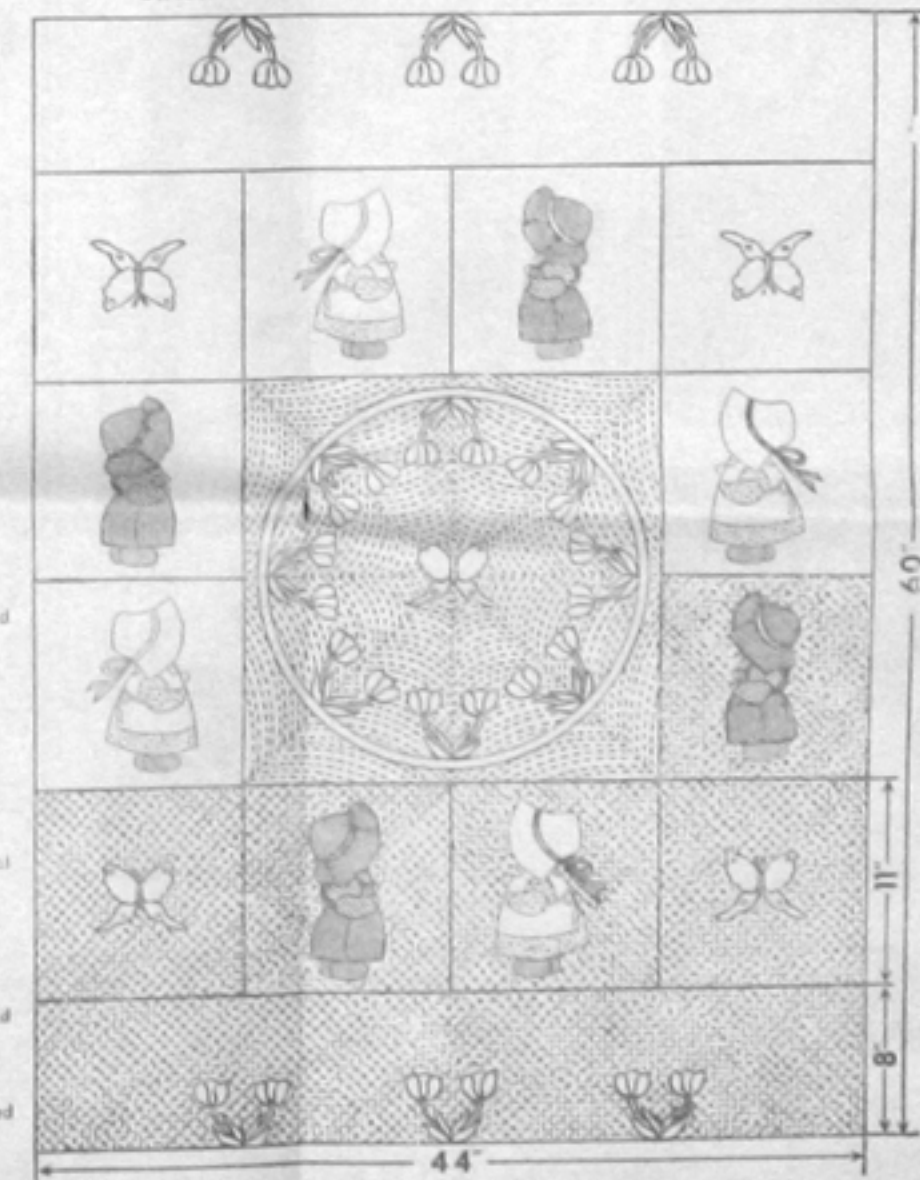
ACTUAL SIZE PATTERNS

No Allowance Made For Seams

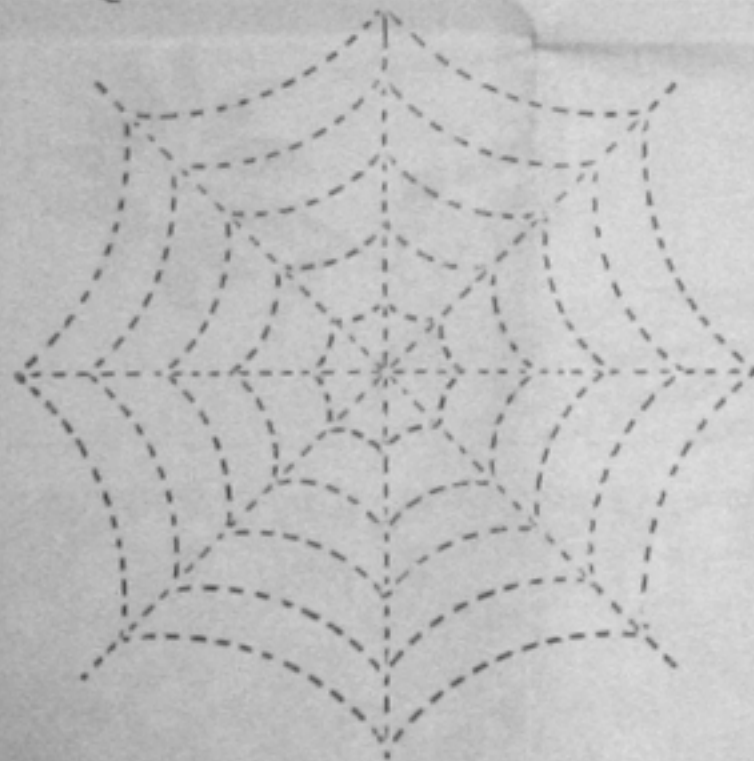


NOTICE
 Wrappers for Cotton Batting having working patterns for Quilts printed thereon are fully protected and are exclusive with The Stearns & Foster Company.
 ALL RIGHTS RESERVED
 THE STEARNS & FOSTER COMPANY
 Lakeland, Cincinnati, Ohio

DIAGRAM OF THE QUILT - SHOWING FINISHED DIMENSIONS



QUILTING SUGGESTION



YARDAGE CHART

(Material 36" wide)

SUNBONNET GIRL

PINK.....	1/2 yard required
Part 1.....	4 Pieces
Part 2.....	4 Pieces
Part 3.....	4 Pieces
Bias strips for Apron Ties, 20", 1/2" wide—1/2" finished.	
PINK PRINT.....	1/2 yard required
Part 3.....	4 Pieces
Part 4.....	4 Pieces
Part 5.....	4 Pieces
Part 6.....	4 Pieces
Part 7.....	4 Pieces
DARK PINK.....	1/2 yards required
Part 9.....	4 Pieces
Part 10.....	4 Pieces
Bias strips for Hat Ties, 44", 1/2" wide—1/2" finished.	
WHITE.....	1/2 yard required
Part 8.....	3 Pieces
Part 11.....	4 Pieces

STRAW HAT BOY

LIGHT BLUE.....	1/2 yard required
Part 1.....	4 Pieces
Part 2.....	4 Pieces
Part 3.....	4 Pieces
Part 4.....	4 Pieces
Bias strips for Overall Straps, 8", 1/2" wide—1/2" finished.	
BLUE PRINT.....	1/2 yard required
Part 5.....	4 Pieces
Part 6.....	4 Pieces
Part 7.....	4 Pieces
DARK BLUE.....	1/2 yard required
Part 9.....	4 Pieces
Part 10.....	4 Pieces
WHITE.....	Cut from white material for Sunbonnet Girl
Part 8.....	3 Pieces

GARDEN

YELLOW.....	1/2 yard required
Part 1.....	16 Pieces
Part 2.....	16 Pieces
Part 3.....	16 Pieces

MEDIUM GREEN.....	1/2 yard required
Part 4.....	8 Pieces
Part 5.....	8 Pieces
Part 6.....	8 Pieces
Part 7.....	8 Pieces
Bias strips for Straps, 48", 1/2" wide—1/2" finished.	
Bias strips for Outer Circle, 60", 1/2" wide—1/2" finished.	

BUTTERFLY

YELLOW.....	Cut from yellow material for Tulips in "Garden"
Part 1.....	3 Pieces
Part 2.....	3 Pieces
Part 3.....	3 Pieces
Part 4.....	3 Pieces
Part 5.....	3 Pieces
BROWN.....	1/2 yard required
Part 4.....	20 Pieces

BACKGROUND

WHITE.....	3 yards required
16 squares 11 1/2 by 11 1/2"	
11 by 11" when finished.	
2 borders 8 1/2 by 44 1/2"	
8 by 44" when finished.	