



76 - FLORAL CAMEO



A - TUMBLING BLOCKS



107 - DEW DROP



70 - STAR BRIGHT



23 - GRANDMOTHER'S FLOWER GARDEN



111 - DADDY MEX



28 - MARTHA'S VINEYARD



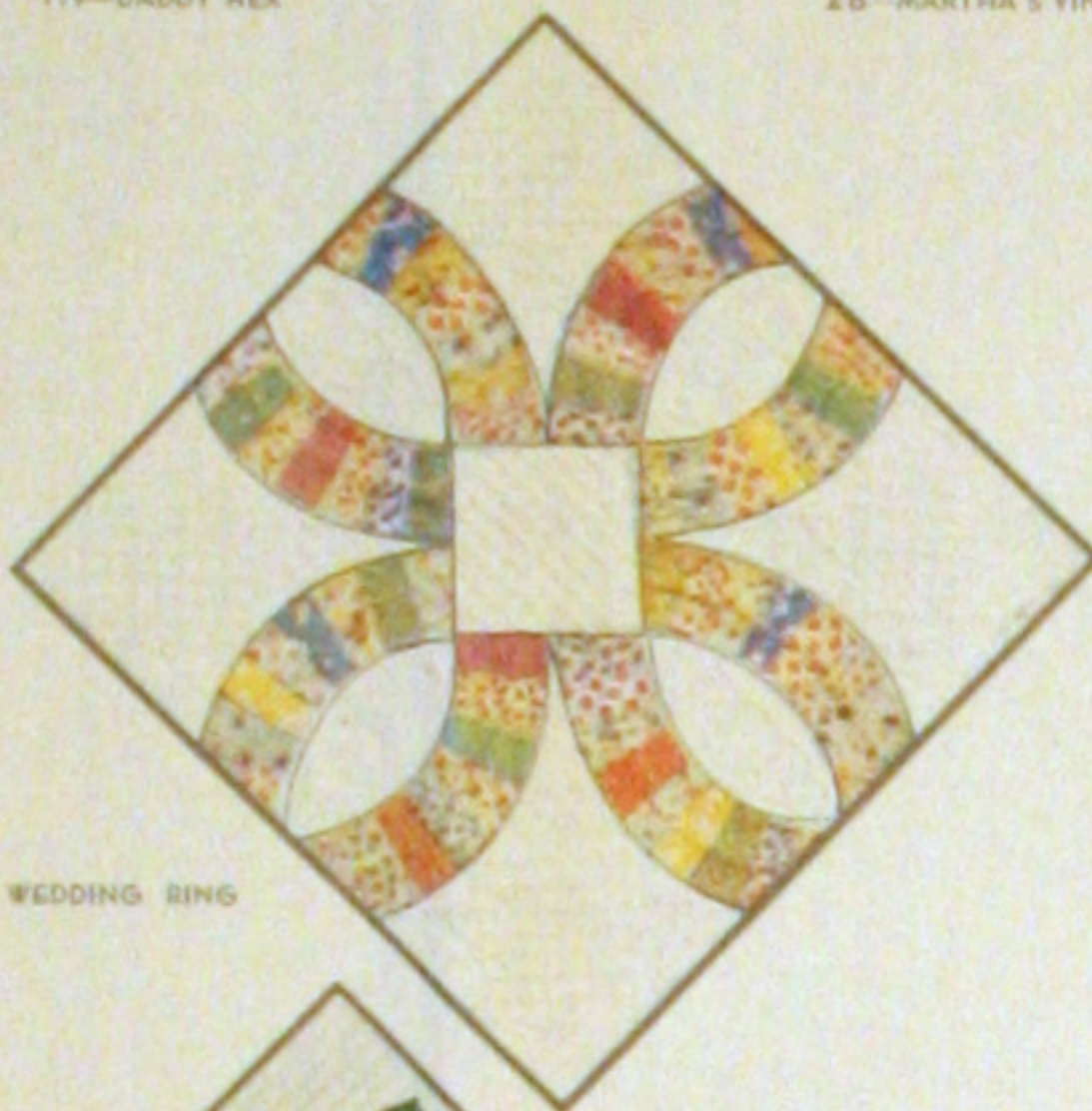
34 - HOMESPUN



P - SUNFLOWER



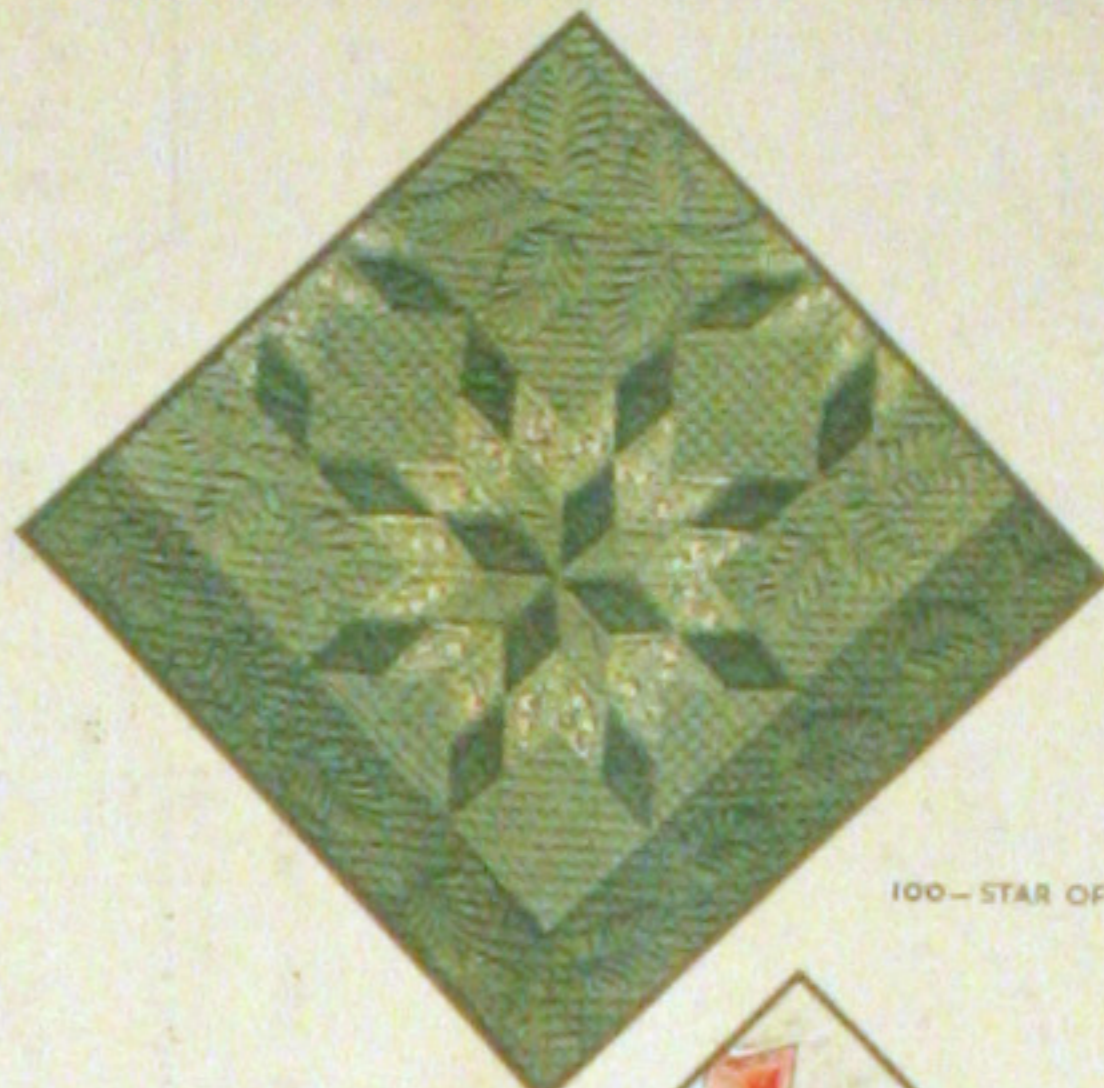
B - IRIS



21 - DOUBLE WEDDING RING



7 - THE LONE STAR



100 - STAR OF BLUEGRASS



80 - APPLE BLOSSOMS



83 - COUNTRY GARDENS

SAVE THIS WRAPPER
THERE IS A VALUABLE QUILT PATTERN ON THE REVERSE SIDE.
NOTE - Patterns for quilts shown on this wrapper and in our catalog may be ordered at a saving with the coupon which is printed below.

FULL QUILT SIZE - 81 x 96 INCHES

100% DACRON® POLYESTER FIBERFILL

MOUNTAIN MIST

REG. U.S. PAT. OFFICE AND IN CANADA

MADE WITH DACRON*

*TRADE-MARK FOR DUPONT POLYESTER FIBERFILL

"GLAZENE"™ FINISH for EASY HANDLING

Uniform in Thickness • Does not Stretch • Washes Beautifully • We Recommend using an 80-Square Material

THE STEARNS & FOSTER CO.
Manufacturers of MOUNTAIN MIST™ Filling for Quilts
CINCINNATI, OHIO 45215

ALL POLYESTER
100% NEW MATERIAL
OHIO REGISTRY No. 52
RN 19002



93 - SPRING WREATH



20 - OHIO ROSE



75 - DRESDEN PLATE



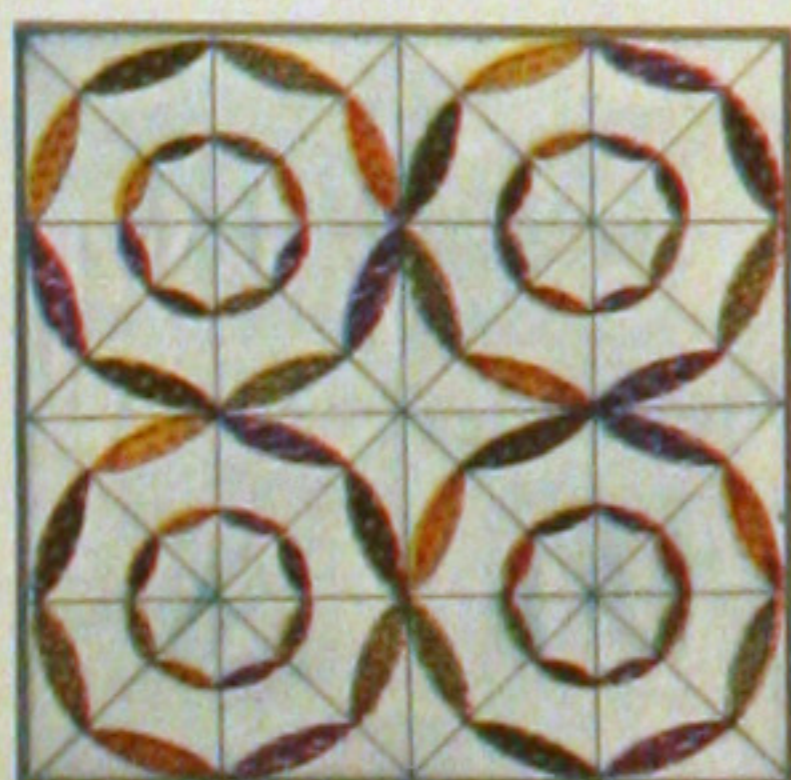
76 - DAISY CHAIN



104 - COLUMBINE



105 - SUNBURST



94 - ODDS AND ENDS



112 - POPPY WREATH

HOW TO ORDER PATTERNS

Printed on the other side of this wrapper you will find one of our famous quilt patterns. If it does not suit your needs we will be glad to send you your choice of any of the patterns illustrated in our free catalogue or on this wrapper at a cost of 20¢, each, with this coupon. The regular price of our patterns is 35¢.

Address: **THE STEARNS & FOSTER CO., QUILT DEPARTMENT D, Cincinnati Ohio 45215**

My Name: _____

Street and Number: _____ City: _____

State: _____ Zip Code: _____

THIS OFFER SUBJECT TO WITHDRAWAL WITHOUT NOTICE

"THE PINEAPPLE"

Pattern No. 108 of the Mountain Mist Series
(A Pieced Appliqued Quilt)

The Pineapple has been a recurring theme in quilt design for well over a hundred years. Very likely, when the Clipper Ships returned from the South Seas to New England, pineapples were among the trophies they brought home. The novelty of this delicious fruit appealed to the housewife, always on the alert for the new in design and taste. Naturally the pineapple appeared in her quilt design.

We found the quilt in Indiana gracing a handsome four-poster in one of that State's notable museums. The design was pieced in navy blue with a center and point of bright red on a white background. Certainly, The Pineapple should be in every collection of antique quilt reproductions.

DIRECTIONS-

1. First make actual size patterns for all the Parts as numbered. To do this, trace the outlines through thin paper, paste onto cardboard or the smooth side of sandpaper, and cut out exactly along the pencilled lines. Or, transfer directly with carbon paper. Sandpaper patterns, placed rough side down on the goods will not slip in the marking. Mark the Part number on each pattern.

2. If there is any doubt about the fastness of the colors, or if there is a possibility of shrinkage, first wash and iron the cloth. If the top of the quilt is washed before quilting, also shrink the material for the back of the quilt.

3. Mark the required number of Parts on each color as listed in the Yardage Chart. Mark on the wrong side of the goods for all parts except Part 7, which should be marked on the right side of the material. Space the outlines for enough apart to allow for seams (1/8" or less) where the pieces are cut. DO NOT CUT ALONG THESE LINES, but a seam's width outside. The lines remain to show where to join the pieces together.

4. From the white material, cut 4 strips 8" x 80" for the borders. Then cut fourteen triangles 16" x 11-5/16" x 11-5/16", plus 4 triangles 8" x 8" x 11-5/16". From the remaining material cut 128 Part 7 to complete the blocks.

5. Cut out and arrange in color groups the correct number of Parts as given on the Yardage Chart. Fasten each group with a single stitch so that they will be ready for use and not lost.

6. You are now ready to piece the 32 Blocks of the quilt. Starting with the Red Center Square, add the Parts, 2, 3, 4 and 5 of navy blue with the final diamond - Part 6 of red. When the "pineapples" are complete turn under the edges and baste onto the four Part 7 to complete the Block. Applique with shadow stitches. Join these 32 Blocks, add the side and corner triangles.

7. Follow the Diagram of the quilt to piece the half-pineapples to be used for the border. With the diamonds touching, baste these figures to the border strips. To insure centering the border, fold these strips lengthwise and crease lightly. When the borders are completed, add to the main panel of the quilt to finish the top. You are now ready for the quilting.

QUILTING SUGGESTIONS

We suggest the feather semi-circle for the diamonds on the edge of the central panel with the plume in the areas between the pineapples. The actual quilting design is shown on the Diagram. Trace the quilting patterns on the quilt and with a ruler, draw the straight line background quilting. The entire quilting design may be marked on the quilt top before putting it into the frame, or you may mark a small portion either with a pencil or by scratching with your needle as your quilting progresses. After the quilting is completed, the pencil marks may be removed with an art gum eraser.

YARDAGE CHART (Material 36" Wide)

RED 1 Yard

Part 1 48 Pieces
Part 6 160 Pieces

NAVY 4 1/4 Yards

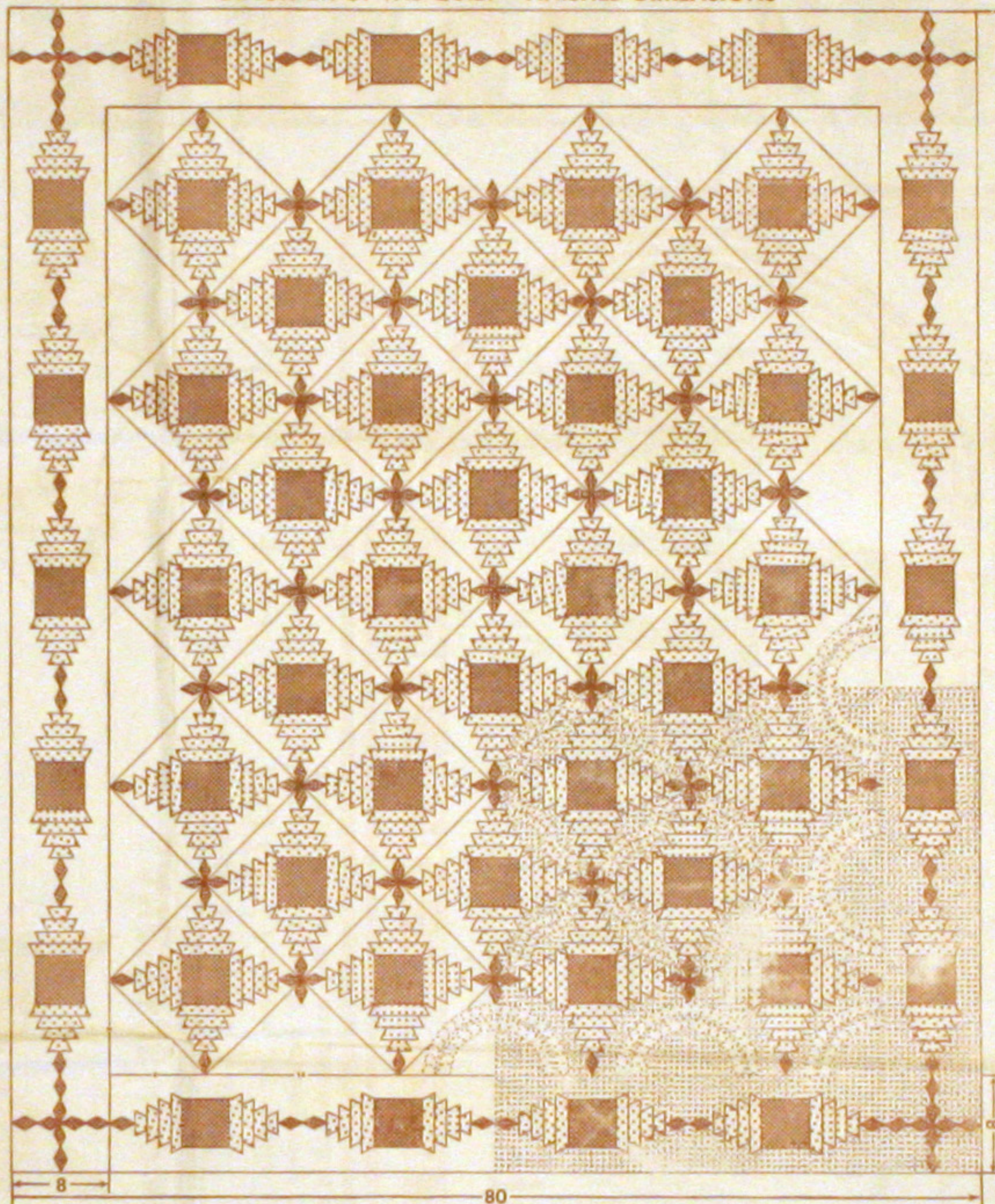
Part 2 160 Pieces
Part 3 160 Pieces
Part 4 160 Pieces
Part 5 160 Pieces
Binding

WHITE 7 1/2 Yards

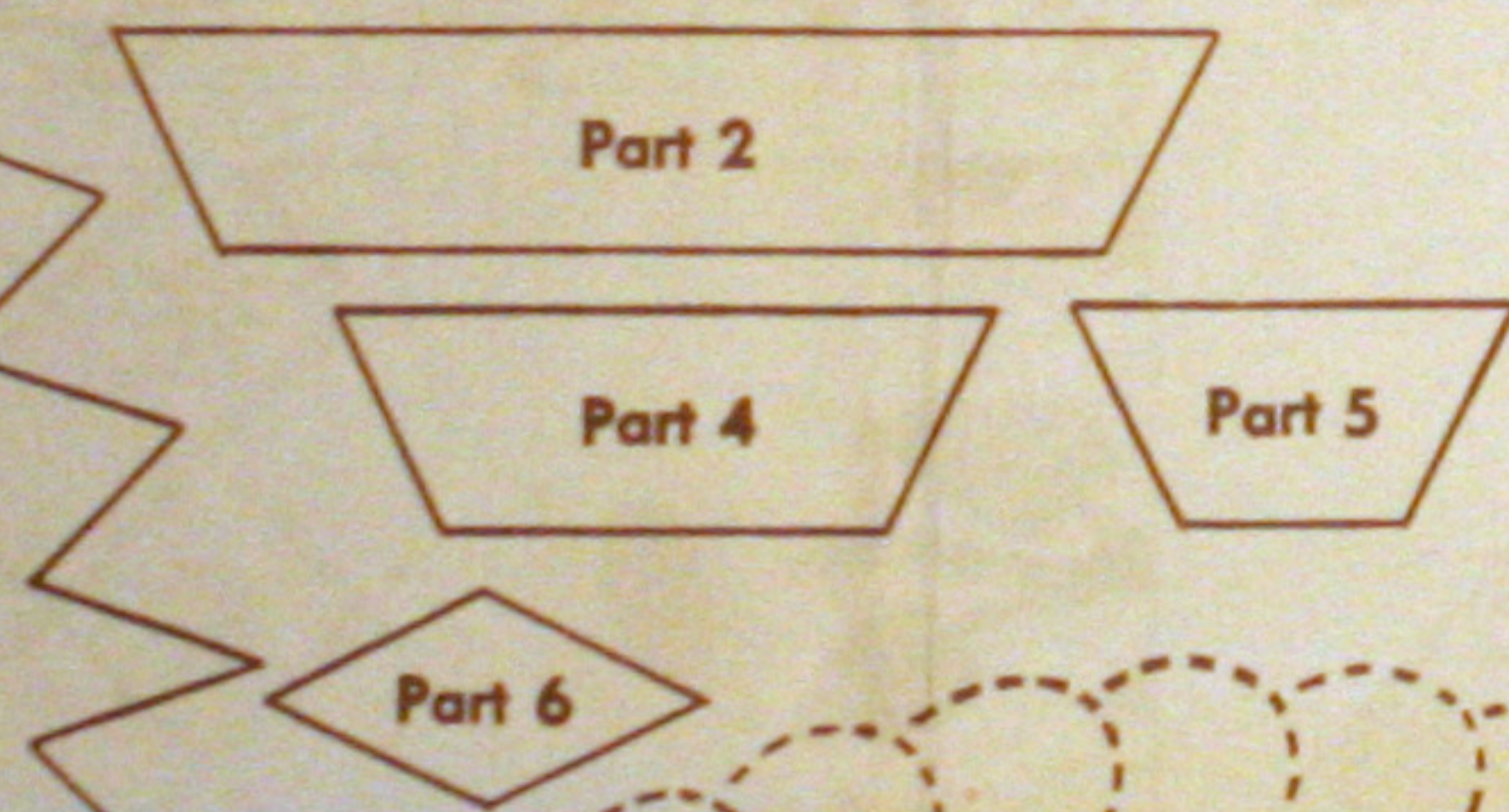
Part 7 128 Pieces
4 Border Strips - 80" x 8"
14 Triangles - 16" x 11-5/16" x 11-5/16"
4 Triangles - 8" x 8" x 11-5/16"

MATERIAL FOR BACK 6 1/2 Yards

DIAGRAM OF THE QUILT - FINISHED DIMENSIONS



Actual Size Patterns for the Block NO ALLOWANCE IS MADE FOR SEAMS



Quilting Design

NOTICE
Wrappers for Cotton Batting having working patterns for Quilts printed thereon are fully protected and are exclusive with The Stearns & Foster Company.
ALL RIGHTS RESERVED
THE STEARNS & FOSTER COMPANY
Lackland, Cincinnati, Ohio

