



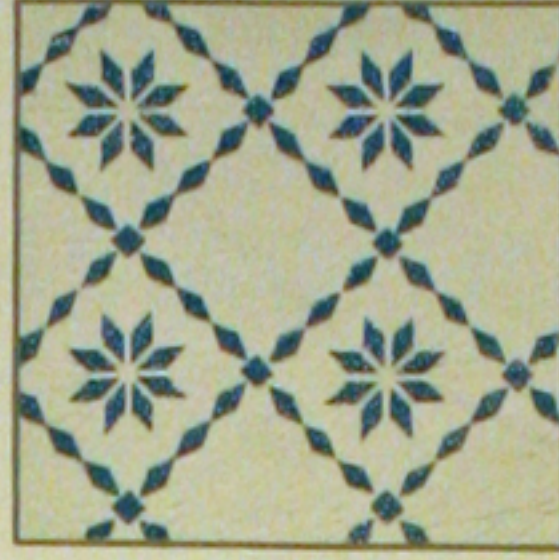
74-FLORAL CAMEO



A-TUMBLING BLOCKS



24-DANCING DAFFODILS



70-STAR BRIGHT



39-POINSETTIA



47-WATER LILIES



28-MARTHA'S VINEYARD



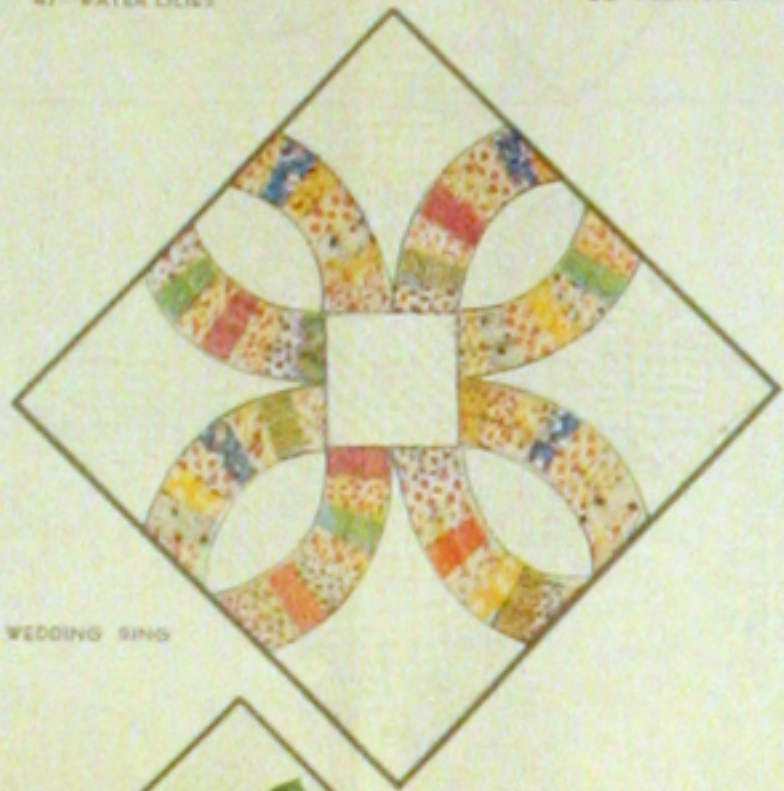
34-HOMESPUN



P-SUNFLOWER



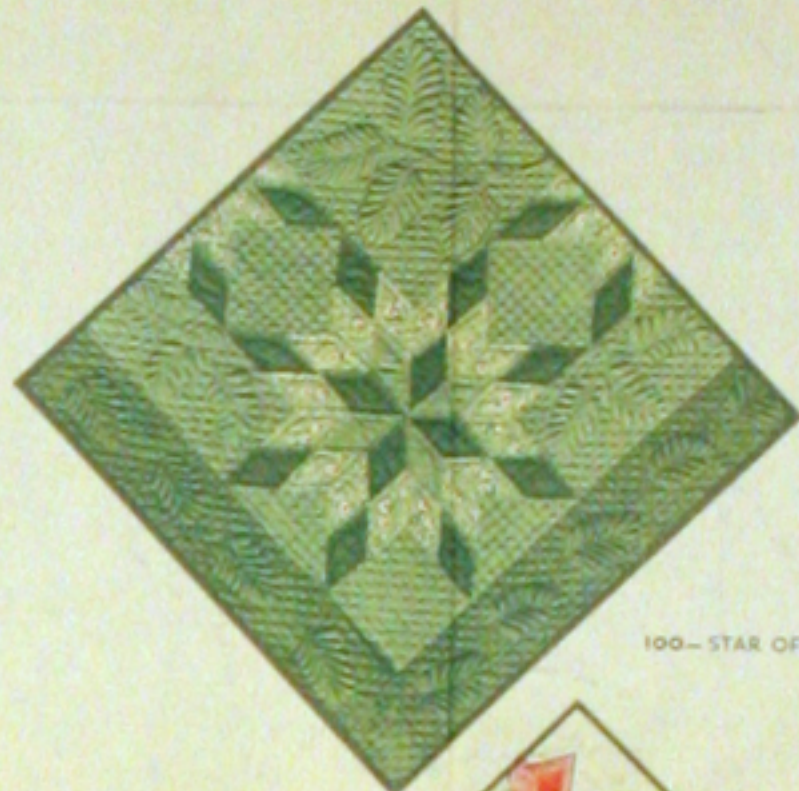
8-IRIS



21-DOUBLE WEDDING RING



F-THE LONE STAR



100-STAR OF BLUEGRASS



80-APPLE BLOSSOMS



83-COUNTRY GARDENS

Save **THE QUILT PATTERN** which is printed on reverse side of this wrapper. You may obtain the pattern for any quilt design illustrated by using the coupon which is printed in the lower right-hand corner of this wrapper.

1 lb. 3 oz.

ONE SEAMLESS SHEET

FULL QUILT SIZE - 81 BY 96 INCHES

MOUNTAIN MIST

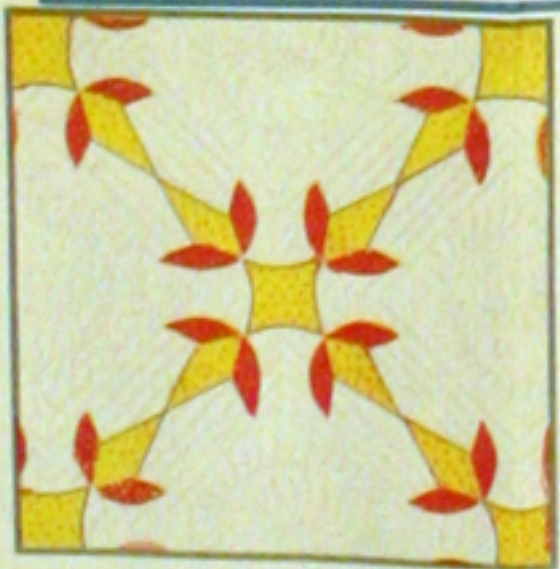
REG. U.S. PAT. OFF. AND IN CANADA

NEEDLE-EASY "GLAZENE" FILLING for QUILTS

Uniform in Thickness • Does Not Stretch Thin • Makes a Quilt That Will Wash Beautifully

THE STEARNS & FOSTER COMPANY LOCKLAND, CINCINNATI, OHIO

Guaranteed by the Manufacturer
100% NEW SELF-MATERIAL
GRID REGISTRY NO. 52



23-TURKEY TRACKS



X-NEW YORK BEAUTY



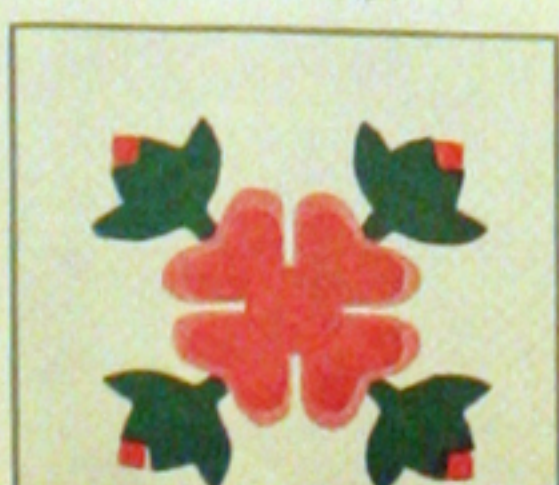
39-DOGWOOD



30-BOSTON COMMONS



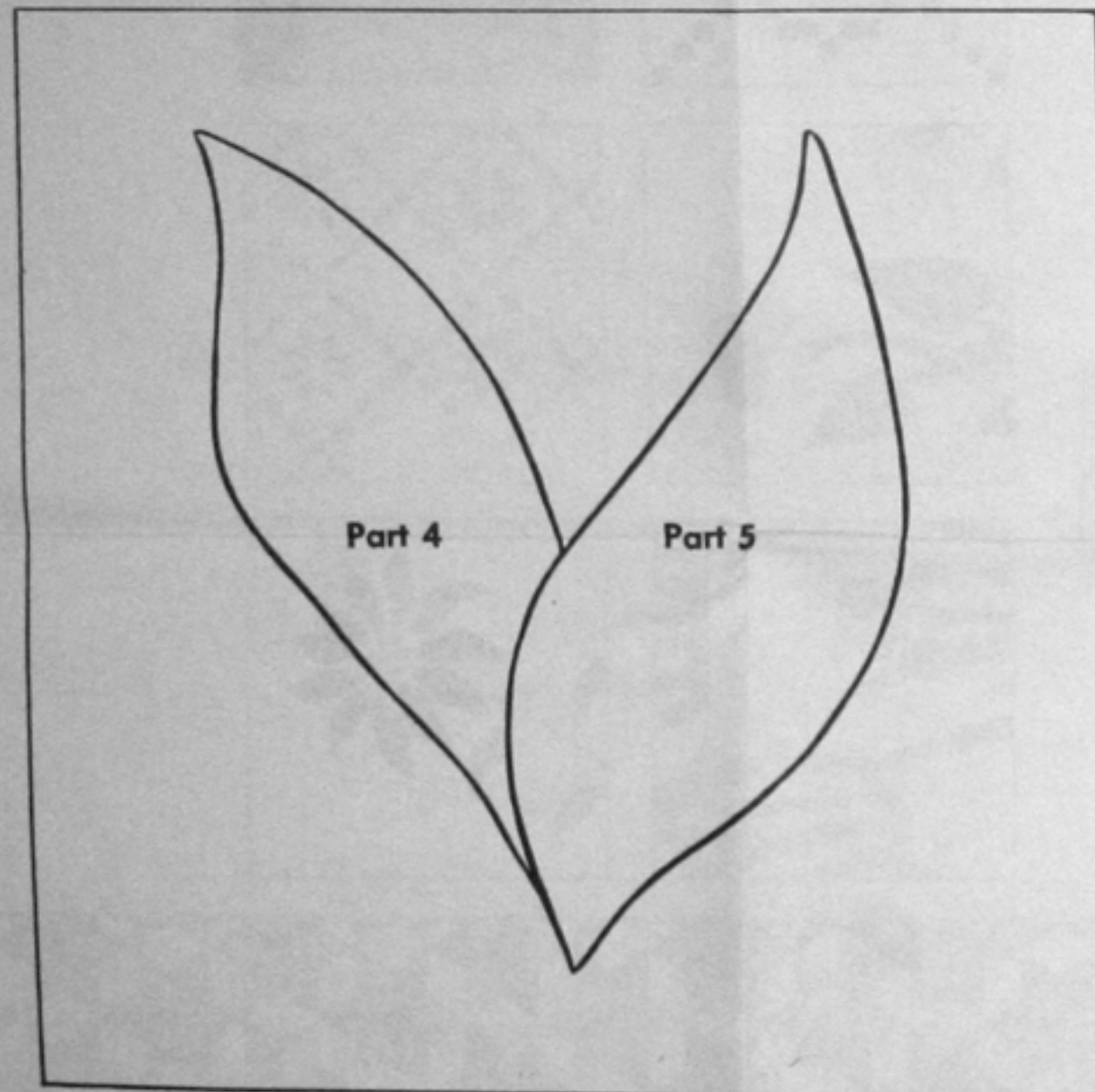
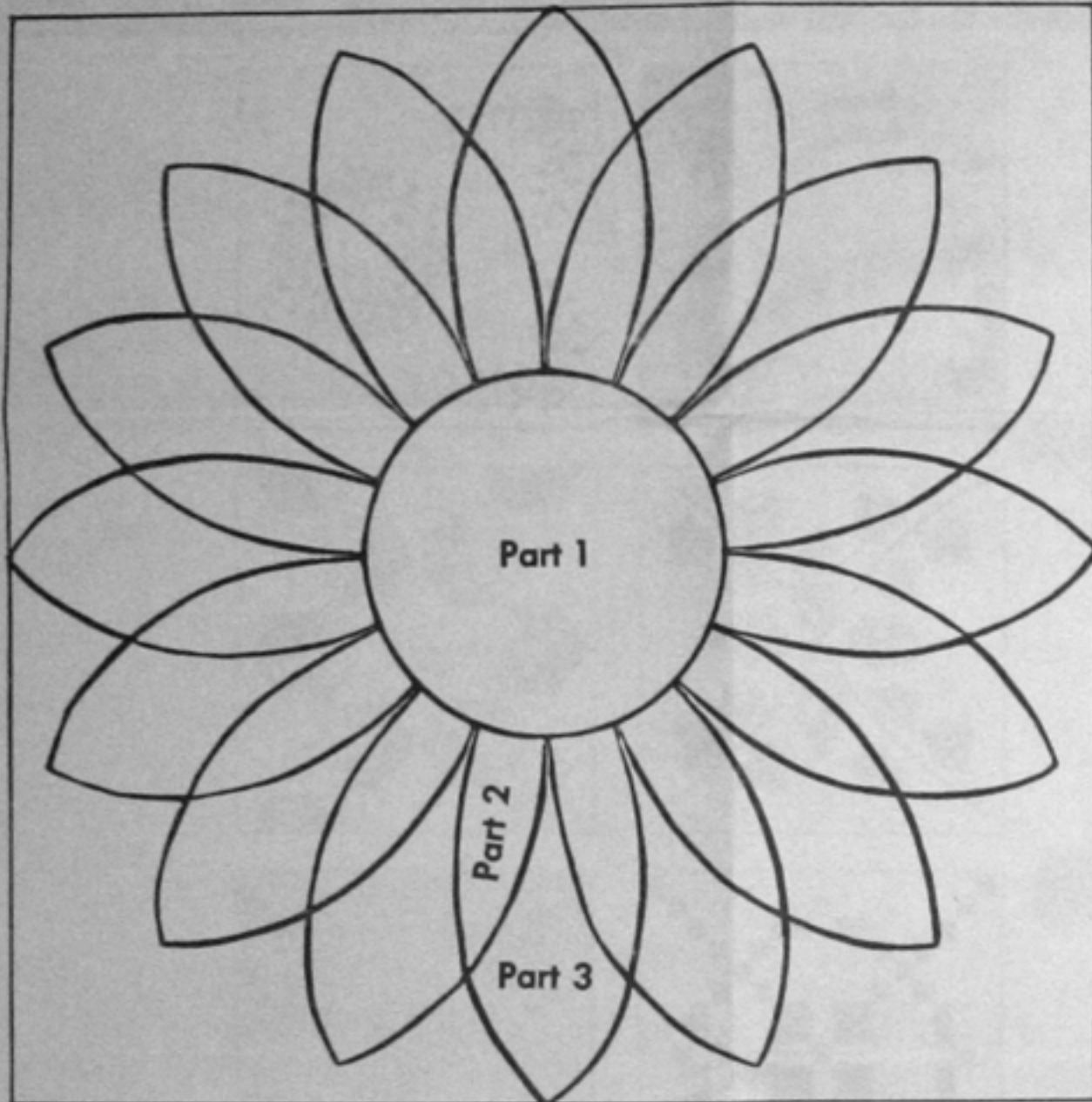
64-COUNTRY LANES



DAHLIA

An Appliqued Quilt

Pattern No. 114 of the Mountain Mist Series



In response to many requests for a "Dahlia" pattern we have designed our version of this popular quilt. It not only gives you a variety of color possibilities, but it leaves plenty of room for fancy quilting to enhance the beauty of the design. We know that this will be a quilt which will be interesting for either a modern or an antique setting.

DIRECTIONS

1. First make actual size patterns for all the Parts as numbered. To do this, trace the outlines through thin paper, paste onto cardboard or the smooth side of sandpaper, cut out exactly along the pencilled lines. Or, transfer directly with carbon paper. Sandpaper patterns, placed rough side down on the material, will not slip while marking. Mark the Part number on each pattern. It is well to make several patterns for each Part, since there are so many pieces to be cut from each, one pattern may become worn and inaccurate.
2. If there is any doubt about the fastness of the colors of your material, or, if there is a possibility of shrinkage, be sure to wash and iron it before cutting. (Note: If the material for the top is washed, also shrink that to be used for the quilt back.)
3. From the white material, take off the 8 1/2" wide border strips which will be 31" long. Next the two strips for the end borders which will be 7 1/2" wide and 80" long. Allow for at least 1/4" seams on these borders. Now cut 63 squares which will be 9" plus 1/4" seams. These are the background blocks.
4. Next cut out the Parts for the pieces of the Dahlias and Leaves as indicated on the Yardage Chart. Allow 1/4" seams on each Part. Mark on the right side of the material so that your pencil lines will remain to show where to turn under the seams. **DO NOT CUT ALONG THESE LINES.** When all the Parts have been cut, fasten together in groups of color with a single stitch so that they will not be lost or mislaid but ready to use.
5. Locate the center of each Block by folding diagonally and creasing lightly. Be careful not to stretch the Block when folding on the bias. Following these diagonal folds, place the center Part 1 on the block. Do not baste on the edges but fasten in the center securely. Next place the small petals (Part 2) around the center. Slip the rough edges on the large end of the petal under the center Part 1 to avoid a bulky seam. Baste down the circular edge of Part 1 over these petals, leaving the pointed ends free to cover the edges of the outside petals. Next place the outside petals (Part 3), slipping the larger ends under the points of the inside petals. Baste and applique the inside petals and finish the Block by appliqueing the outside petals to the background. You will need 31 of the Dahlia Blocks.

YARDAGE CHART (Material 36" Wide)		
YELLOW		5 1/2 Yards
Part 1	31 Pieces needed	
DARK RED		15 1/2 Yards
Part 2	496 Pieces needed	
DARK RED PRINT		15 1/2 Yards

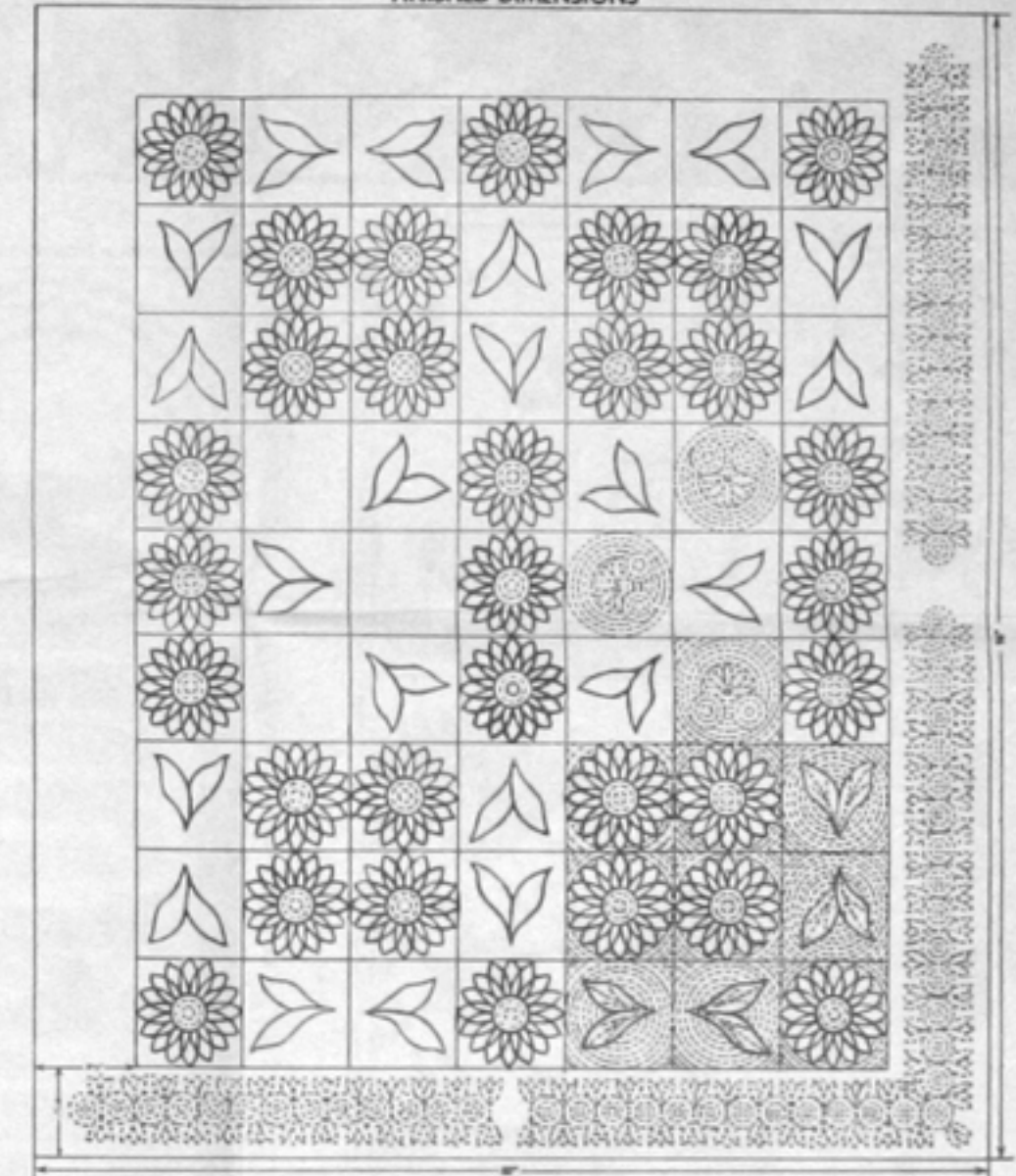
6. Next place the green leaves on 26 of the background blocks. First locate the Part 4 pieces and baste to the background. Next place the Part 5 pieces as shown on the Diagram of the Block. Save a seam by placing the rough edges of Part 4 under Part 5 where they meet. Applique to the background and you are ready to assemble your entire quilt top.
7. Follow the Diagram of the Quilt and assemble the three types of Blocks—the Dahlia, the Leaf and the plain Blocks. Add the borders to the ends and the sides and your top is complete.
8. You are now ready for the quilting as described in our Quilting Suggestions. Mark the quilting design on the top. Lay the back over the quilting frame, cover with the Mountain Mist Cotton and finally the applique top. Fasten the ends to the muslin covers of the rods of the frame and wind the quilt into the frame. If there is any sagging the quilt may be tightened by using tapes to the sides of the frame. These tapes will be moved as the quilting progresses and the quilt is rolled from one rod to the other. The actual quilting is done with a fine running stitch following the design suggested. When it is finished, remove from the frame, clip the rough edges and bind with a narrow binding of the background material of one of the colors of the Dahlias or Leaves.

QUILTING SUGGESTIONS

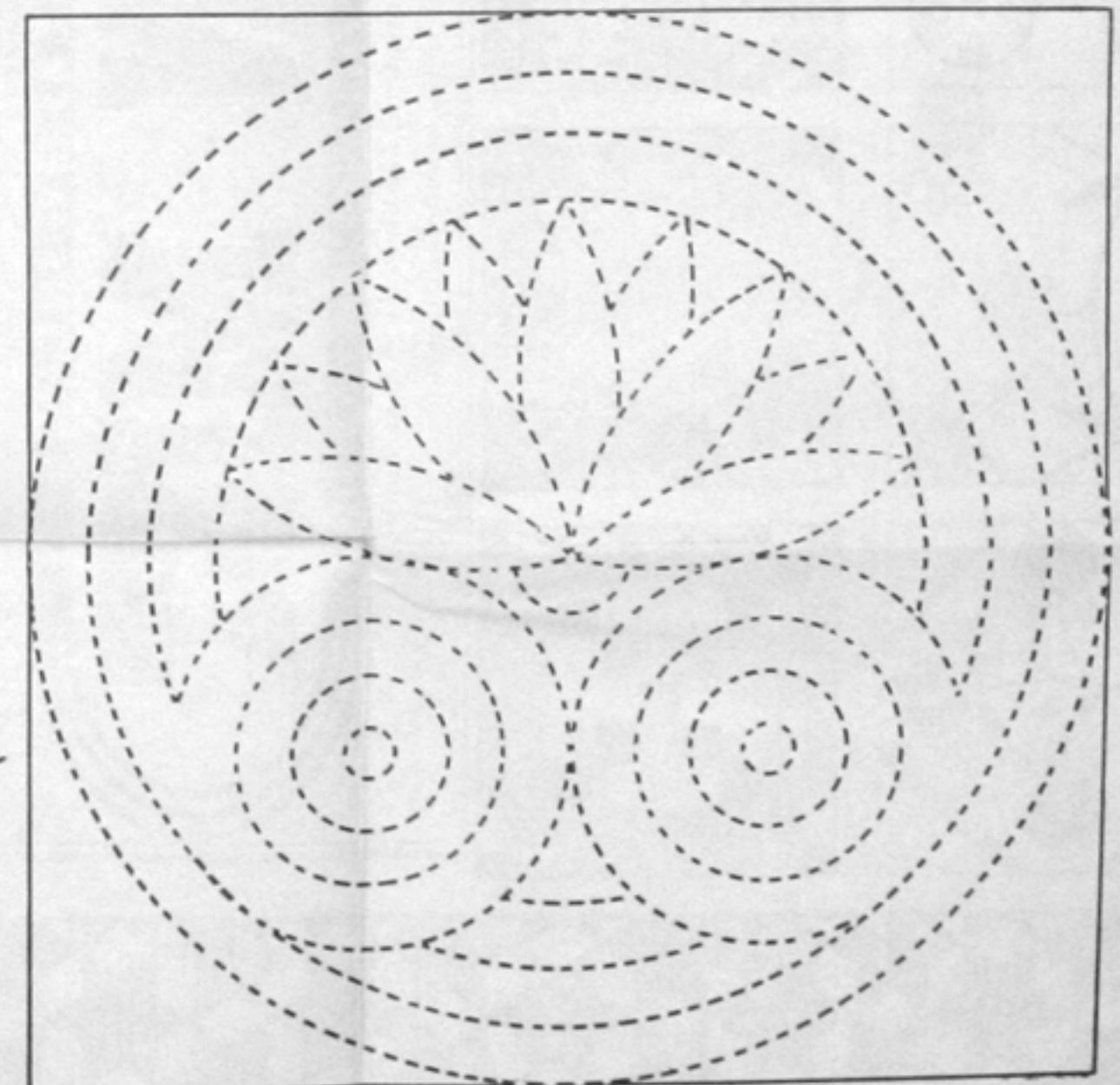
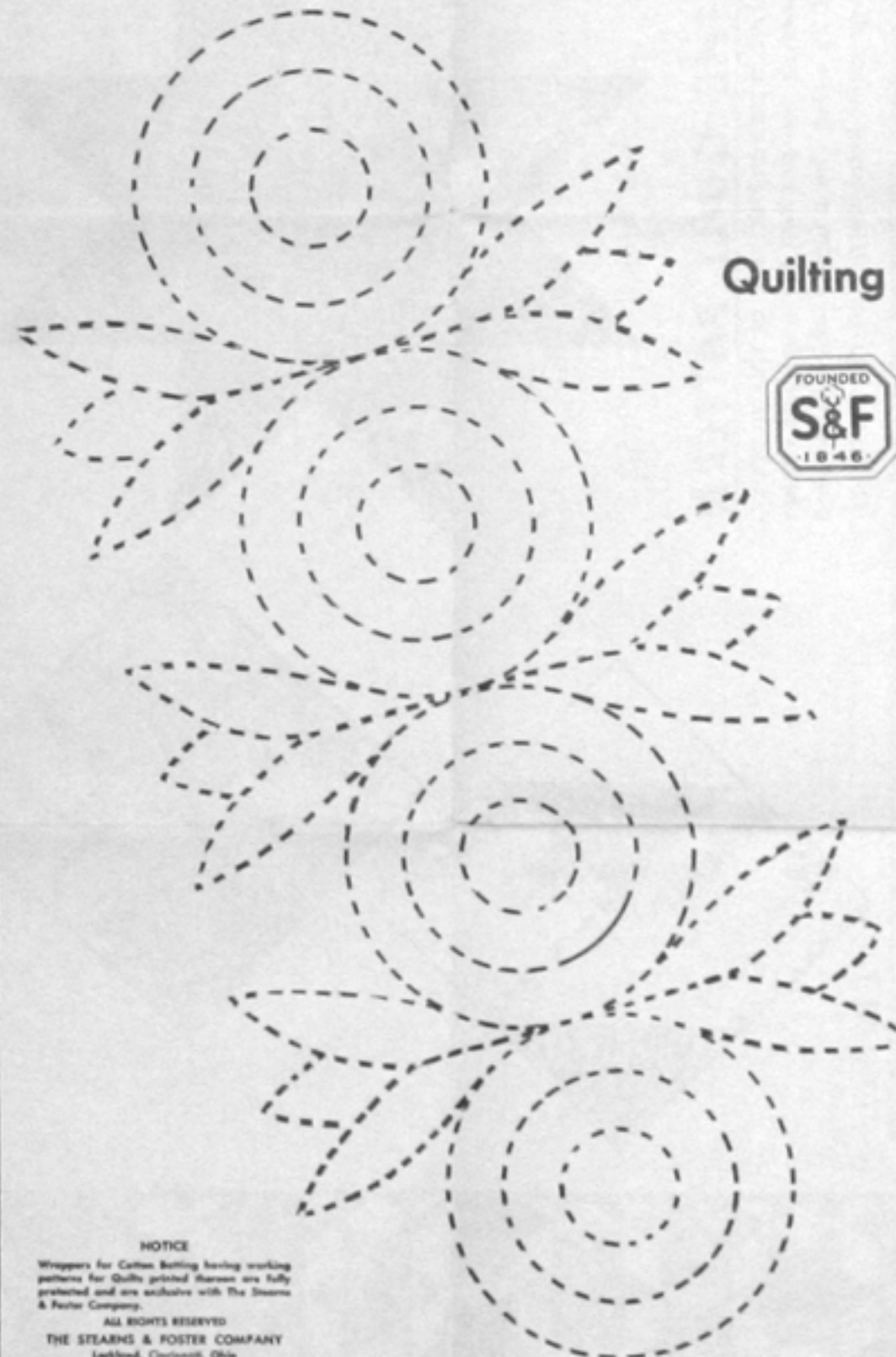
Follow the Diagram of the Quilt for the quilting design. The plain blocks are quilted with the medallion drawn on the pattern. For the background lines use a pencil, pin and string. Tie the string to the pencil and pin the other end to the center of the Block. Draw the circles 1/4" apart or 1/2" if desired. The Border Design may be backed by straight lines drawn with yard stick either straight or diagonally. When marking the top be careful not to mark too heavily. The pencil marks may be removed with a soft eraser, preferably an art gum eraser when the quilting is completed.

Part 3	496 Pieces needed	
GREEN		2 1/4 Yards
Part 4	26 Pieces needed	
Part 5	26 Pieces needed	
WHITE		9 Yards
9" Squares	63 needed	
Borders 8 1/2" x 81"	2 needed	
Borders 7 1/2" x 80"	2 needed	
Background		26 1/2 Yards, 81" Wide

DIAGRAM OF THE QUILT
FINISHED DIMENSIONS



Quilting Suggestions



NOTICE
Writers for Cotton Belling having working patterns for Quilts printed thereon are fully protected and are exclusive with The Stearns & Foster Company.
ALL RIGHTS RESERVED
THE STEARNS & FOSTER COMPANY
Leakland, Cincinnati, Ohio