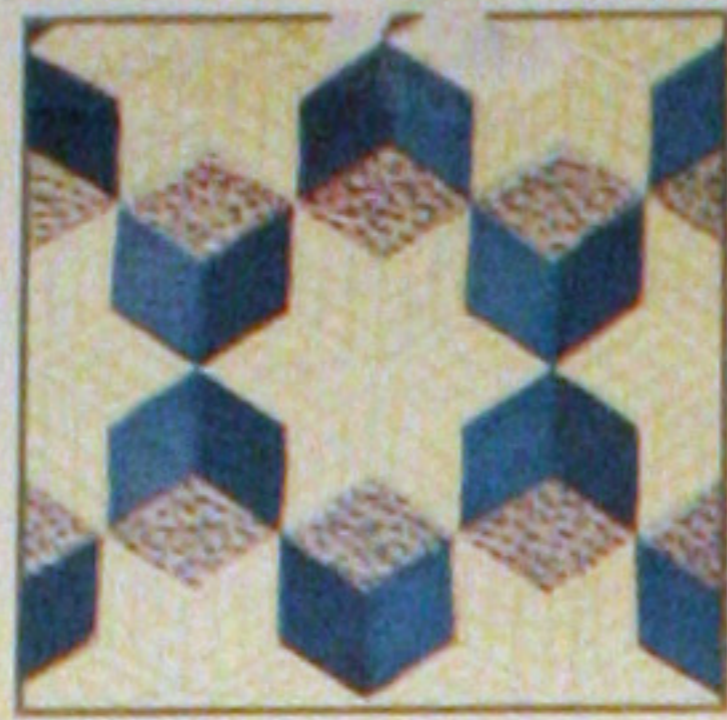




74-FLORAL CAMEO



4-TUMBLING BLOCKS



101-NEW DROP



70-STAR BRIGHT



39-POINSETTIA



47-WATER LILIES



28-MARTHA'S VINEYARD



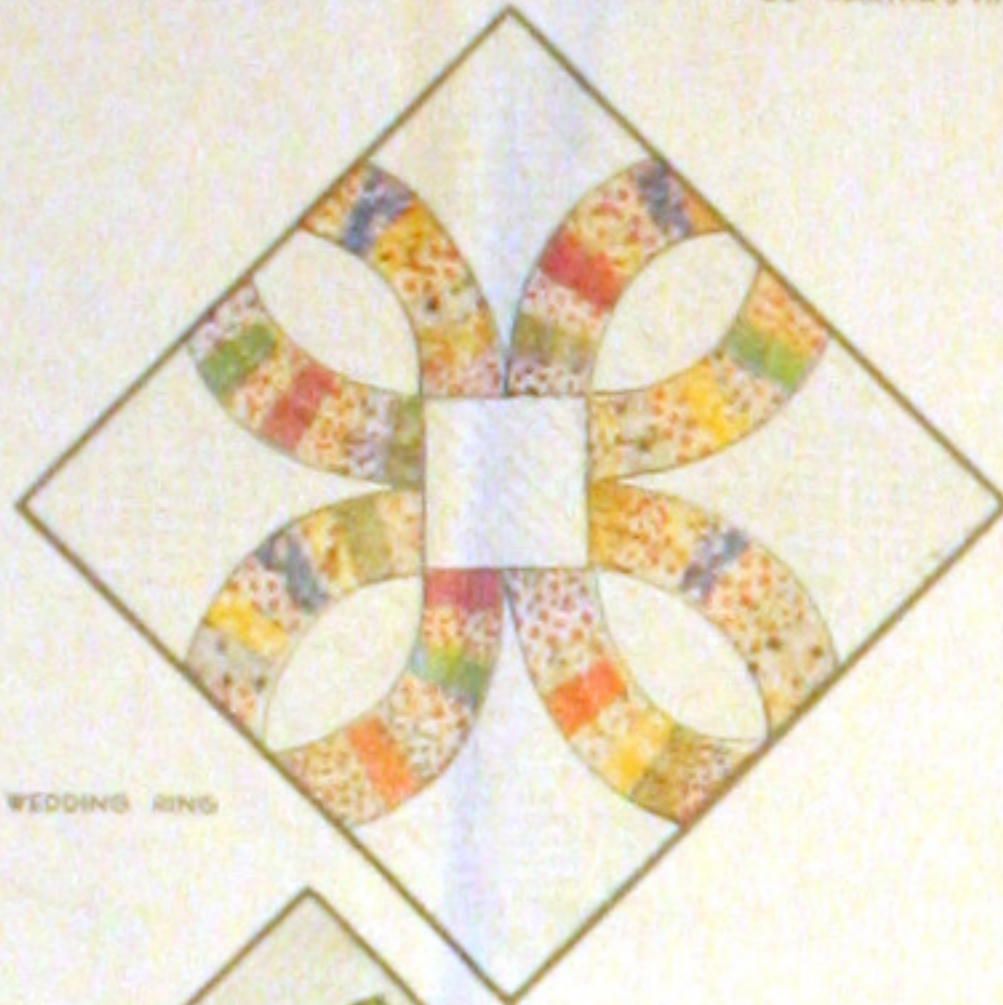
38-HOMESPUN



P-SUNFLOWER



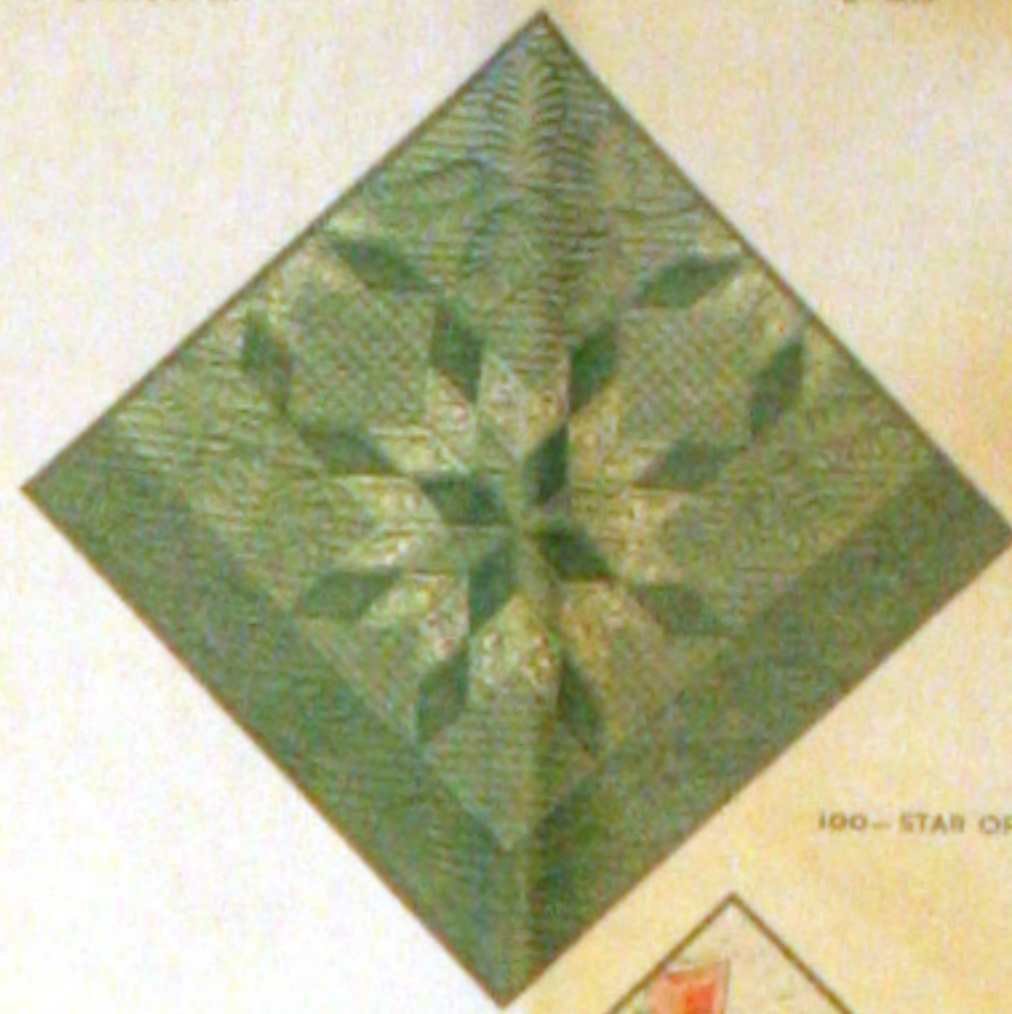
8-IRIS



21-DOUBLE WEDDING RING



6-THE LONE STAR



100-STAR OF BLUEGRASS



80-APPLE BLOSSOMS

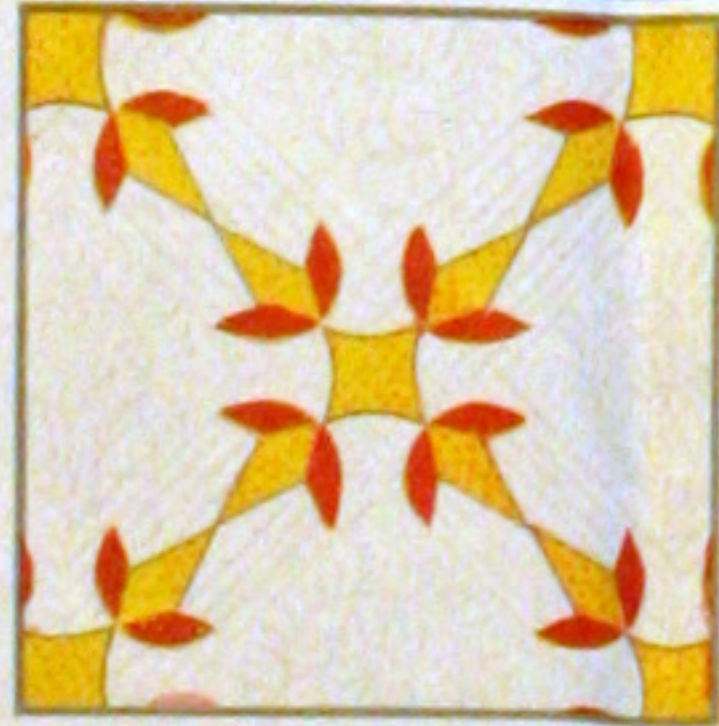


83-COUNTRY GARDENS

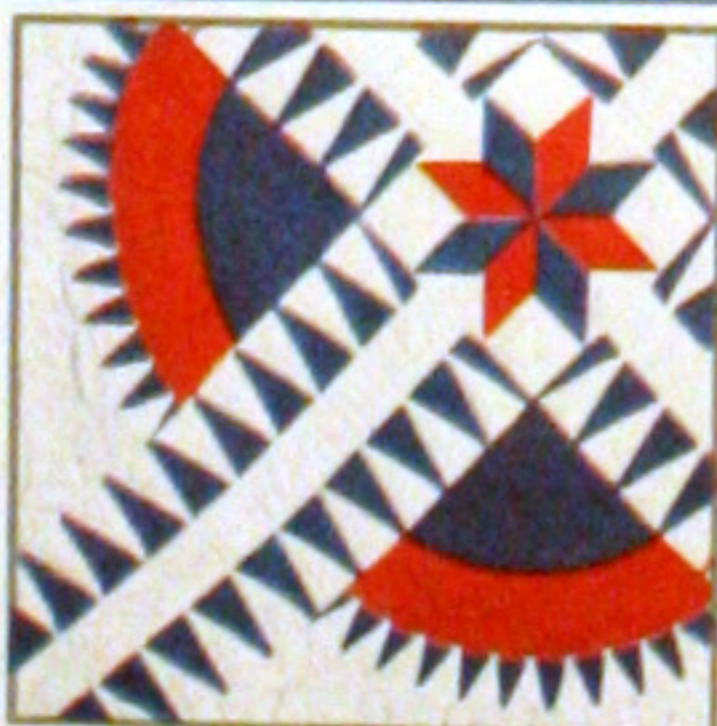
Save THE QUILT PATTERN which is printed on reverse side of this wrapper. You may obtain the pattern for any quilt design illustrated by using the coupon which is printed in the lower right-hand corner of this wrapper.

1 lb. 5 oz.

ONE SEAMLESS SHEET  
**EXTRA LARGE SIZE - 81 BY 108 INCHES**  
**MOUNTAIN MIST**  
 REG. U.S. PAT OFF AND IN CANADA  
**NEEDLE-EASY "GLAZENE" FILLING for QUILTS**  
 Uniform in Thickness • Does Not Stretch Thin • Makes a Quilt That Will Wash Beautifully  
 THE STEARNS & FOSTER COMPANY Lockland, CINCINNATI OHIO  
 Form 106 © 1954 S & F CO. LITHO IN U.S.A.  
 Guaranteed by the Manufacturer  
 100% NEW SAFER FIBER  
 OHIO REGISTRY No. 52



33-TURKEY TRACKS



8-NEW YORK BEAUTY



79-DOGWOOD



30-BOSTON COMMONS



64-COUNTRY LANES



63-SPRING WREATH



30-OHIO BOSS



75-DRESDEN PLATE



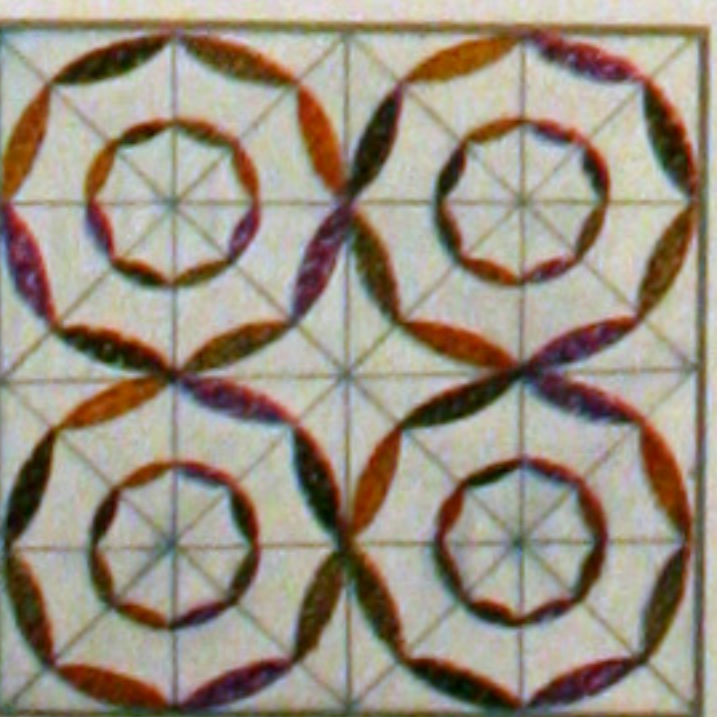
76-DAISY CHAIN



104-COLUMBINE



106-SUNBURST



94-ODDS AND ENDS



35-GRANDMOTHER'S FLOWER GARDEN

**HOW TO ORDER PATTERNS**

Printed on the other side of this wrapper you will find one of our famous quilt patterns. If it does not suit your needs and you will send us this coupon we will send you your choice of any of the patterns illustrated in color on this wrapper or illustrated in our pattern catalog for 25c each. The regular price of our patterns is 35c each. Order patterns by number.

**THE STEARNS & FOSTER CO., Cincinnati 15, Ohio, U. S. A.**

My Name \_\_\_\_\_  
 Address and Street \_\_\_\_\_  
 City and State \_\_\_\_\_  
 Zip \_\_\_\_\_

QUILT PATTERN COUPON

THIS OFFER SUBJECT TO CHANGE WITHOUT NOTICE



# THE DISCUS

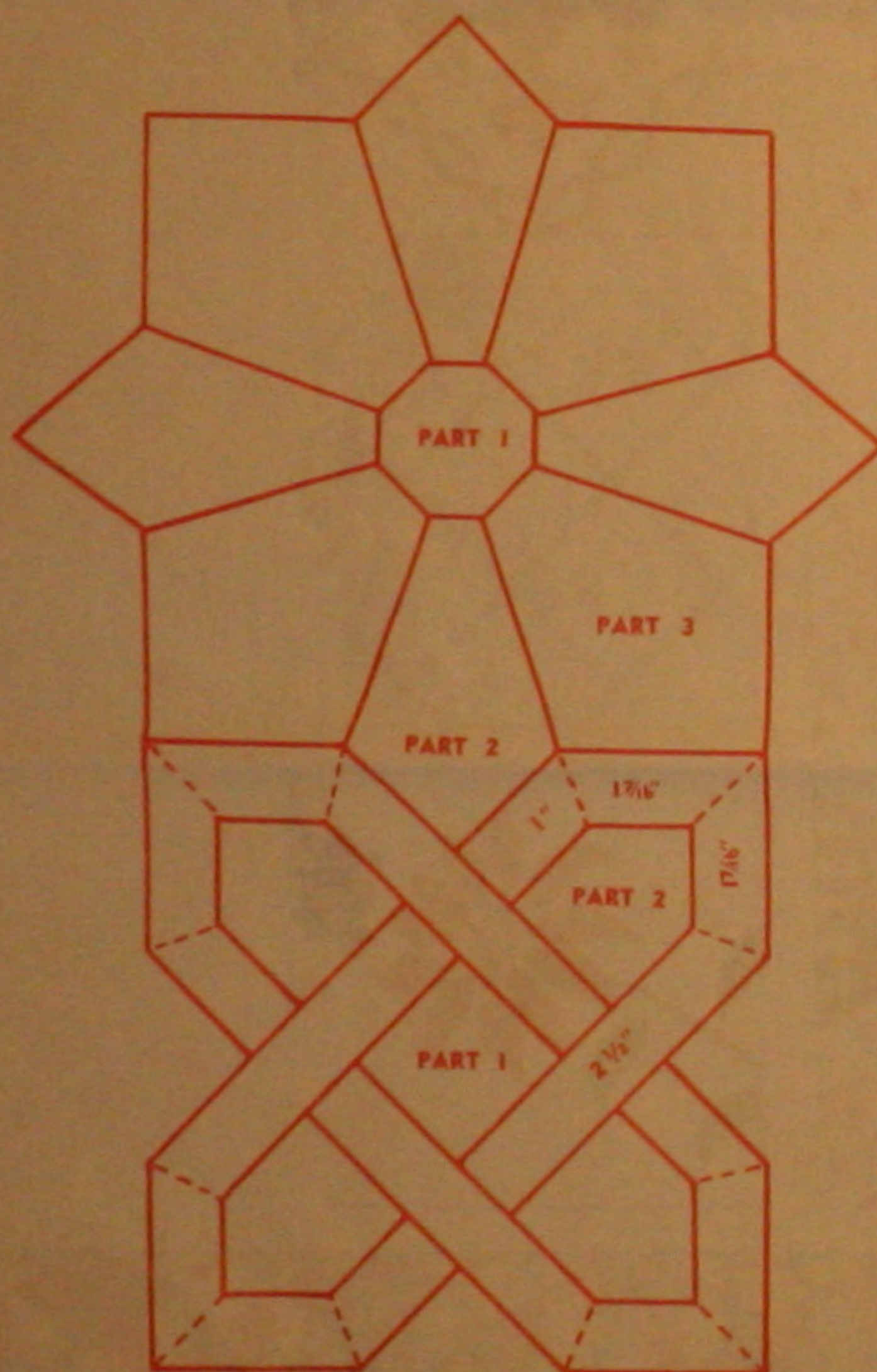
Pattern No. 116 of the  
Mountain Mist Series  
(Apieced Quilt)

Quilt Making is becoming an international craft. This pattern was designed by a woman who is living in New Zealand. Just as the Missionaries took quilting to Hawaii, so she has taken this fine needlework to her new home in the South Pacific. Her first attempt was a doll's quilt. The native women became interested and she started to teach them how to make quilts. She is now supervising several classes in quilt-making and has designed patterns which use the objects typical of the country. We purchased this lovely pieced design from her so that we could add it to our Mountain Mist Series and make it available to our customers.

## DIRECTIONS

1. First make actual size patterns for all the Parts as numbered. To do this, trace the outlines through thin paper, paste onto cardboard or the smooth side of sandpaper, and cut out exactly along the pencilled lines. Or, transfer directly with carbon paper. Sandpaper patterns, placed rough side down on the material will not slip in the marking. Mark the Part number on each pattern.
2. If there is any doubt about the fastness of the colors, or if there is a possibility of shrinkage, first wash and iron the material. If the top of the quilt is washed before making the quilt also shrink the material for the backing.
3. Mark the required number of Parts on each color as listed on the Yardage Chart. Mark on the wrong side of the material for all parts. Space the outlines far enough

## DIAGRAM OF BLOCKS — ACTUAL SIZE



apart to allow for the seams —  $\frac{1}{4}$ " or less, when the pieces are cut. DO NOT CUT ALONG THESE LINES, but a seam's width outside. The lines remain to show where to join the pieces.

4. From the white material cut two strips  $80\frac{1}{2}" \times 6\frac{1}{2}"$  for the end borders, and two strips  $84\frac{1}{2}" \times 4\frac{1}{2}"$  for the side borders. From the remaining white material cut 168 squares — Part 1, and 672 Part 2 pieces for the Chain Blocks.

5. Cut  $35\frac{3}{4}$  yards  $\frac{1}{2}"$  strips of light blue material and  $35\frac{3}{4}$  yards  $\frac{1}{2}"$  strips of darker blue material for the Chains. These strips should be cut on the bias  $1"$  wide for better fitting. Half the chain is made of light blue, the other half of darker blue around the center square and two Part 2s. — see Diagram of the Blocks.

6. Part 1 of the Discus Block is made of a dark blue (not navy but a darker blue than the darker part of the chain). You will need 195 of these centers.

7. From print materials which are all different, cut the Parts as listed on the Yardage Chart. Sort into groups and join together with a single basting stitch so that they will be ready to use and not lost.

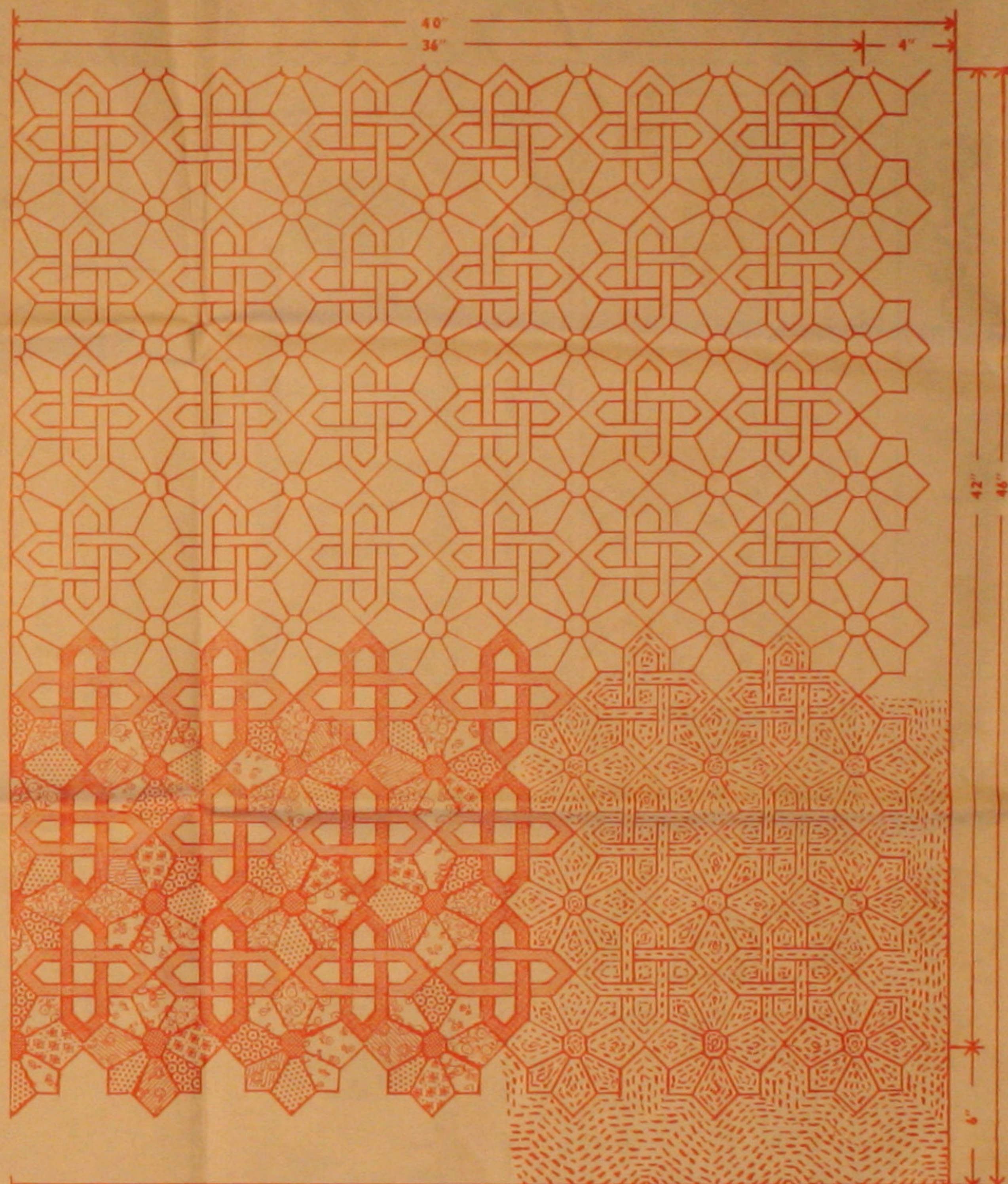
8. When all of the Parts have been cut and sorted into groups you are ready to assemble the quilt top. The Discus Block and the Chain Block are pieced separately. When the required number of Blocks are pieced you may then assemble the entire top. You will need 168 Chain Blocks and 195 Discus Blocks. Starting with the center square of the Chain Block — Part 1 — add the  $2\frac{1}{4}" \times \frac{1}{2}"$  strips. Next add the four Part 2s and finish the block with the  $1-7/16"$  end strips. Following the Diagram of the Discus Block, join the print pieces — 4 Part 2 and 4 Part 3, leaving the seams at the center flat. Complete the Block by appliqueing the center Part 1 over these flat seams.

9. Assemble these blocks as shown on the Diagram of  $\frac{1}{4}$  of the Quilt. Baste the edges of this assembled top to the end and side borders of white. The outer borders will start at the center of the outer Discus Blocks. At each corner you will have a complete Discus. When these borders have been basted into position and the pattern applied to them, you may cut away the excess material back of the blocks leaving a small seam. This will avoid any bulkiness when the quilting is done. Join the borders with small seams to finish the quilt.

10. You are now ready to quilt your quilt. To do this lay the material for the back on your frame, spread your Mountain Mist cotton over it and place the completed top over the cotton filling. Baste to the muslin on the rods of your frame and roll equally onto each rod. To tighten the quilt in the frame you may use tape to the ends. These tapes will have to be moved as the quilting progresses. Start at the center of the quilt and quilt around each Part about  $\frac{1}{8}$  inch from the seam. This will give you a complete pattern on the back as well as on the front of your quilt. Finish the quilting on the borders by following the outlines of the Blocks. Since the pieces of this quilt are quite small, there is little room for very fancy quilting. If you do not have a frame, lay your quilt on the floor and, starting at the center, baste the three parts — back, filling and top — securely. You may then use a quilting hoop or even quilt on your sewing machine. Just be sure to start at the center and work out, whichever quilting method you use.

11. When the quilting is completed, remove from the frame, cut away the rough edges and bind with a narrow bias binding. For an additional trimming you could use both blues with the lighter binding being about  $\frac{1}{4}$  inch and the darker blue binding the entire edge about  $\frac{1}{4}$  inch wide. The bindings are cut twice size and folded to meet at the center of the back. Stitch firmly to the front of the quilt, fold over the edges and whip down to the back.

## DIAGRAM OF $\frac{1}{4}$ OF THE QUILT — FINISHED DIMENSIONS



## YARDAGE CHART (Material 36" Wide)

WHITE	25 1/2 Yards
Part 1 of Chain 168 needed	
Part 2 of Chain 672 needed	
LIGHT BLUE	15 1/2 Yards
35 3/4 Yards bias 1" wide	
MEDIUM BLUE	15 1/2 Yards
35 3/4 Yards bias 1" wide	
DARK BLUE	3 1/2 Yards
Part 1 of Discus 195 needed	
PRINTS	8 Prints — 1 1/4 each
Part 2 Discus 780 needed	
Part 3 Discus 780 needed	
MATERIAL FOR BACK	6 1/2 Yards

NOTICE  
Whisper for Carbon Basting having working permits for Quilt printed muslin are fully printed and are exclusive with The Stearns & Foster Company.

ALL RIGHTS RESERVED  
THE STEARNS & FOSTER COMPANY  
Lakeland, Connecticut, U.S.A.

