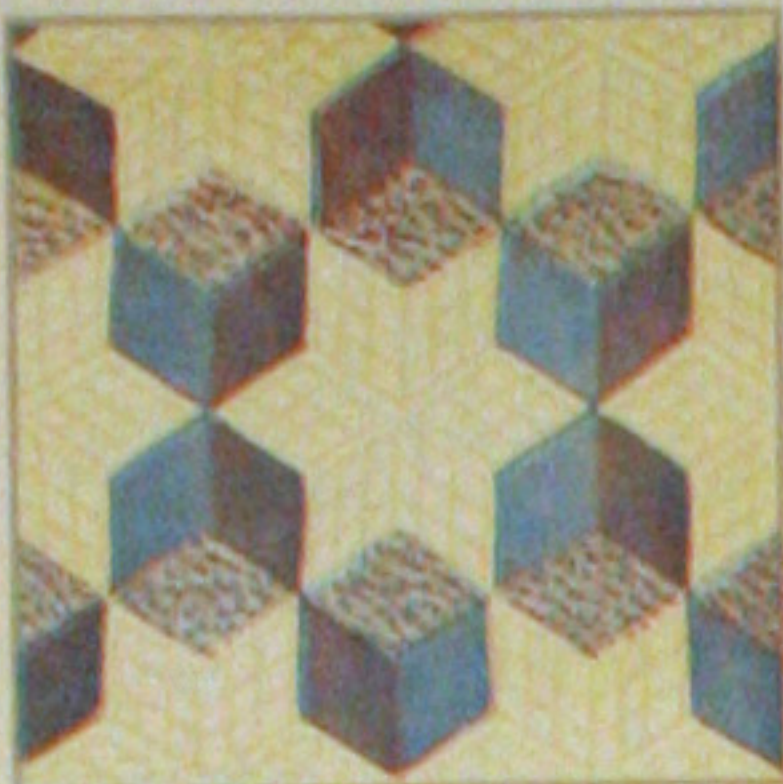




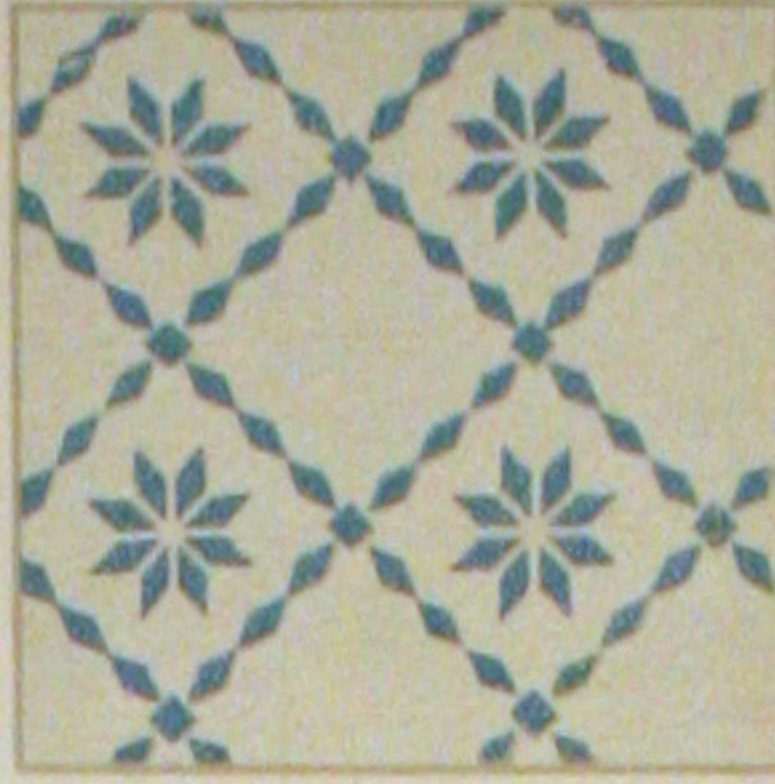
74-FLORAL CAMEO



A-TUMBLING BLOCKS



192-NEW DROP



70-STAR BRIGHT



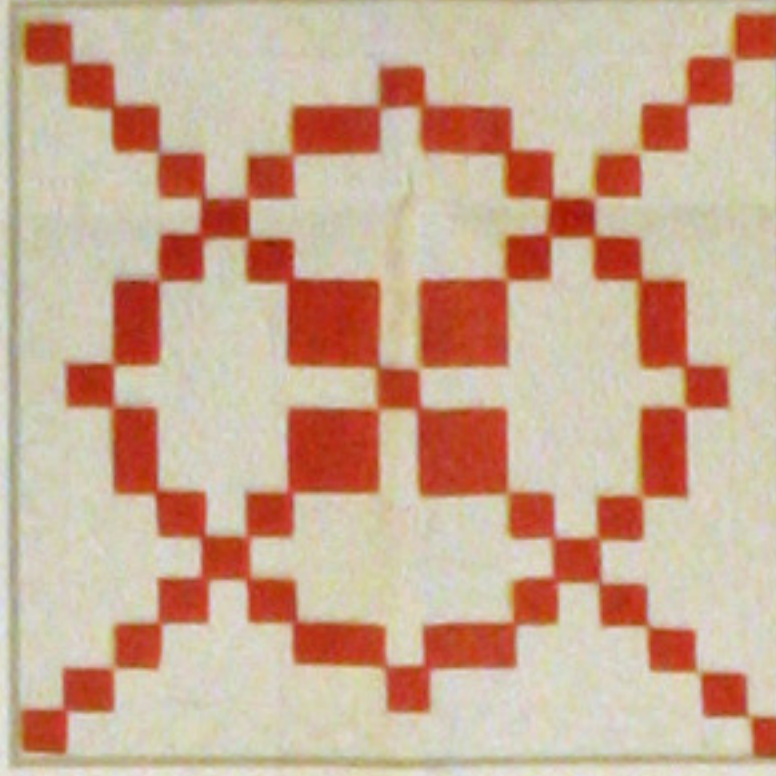
22-GRANDMOTHER'S FLOWER GARDEN



119-DADDY MEX



28-MARTHA'S VINEYARD



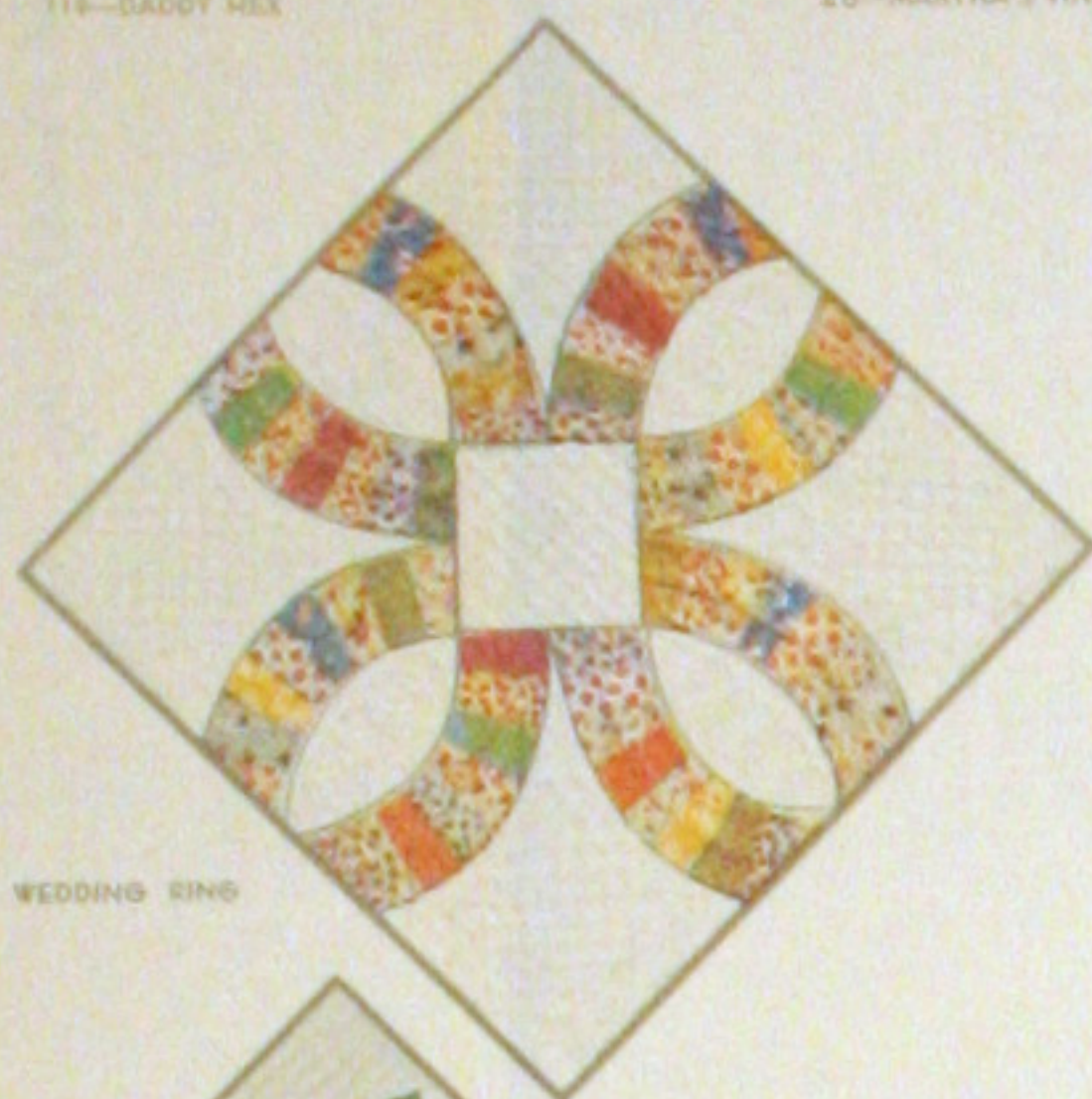
34-HOMESPUN



P-SUNFLOWER



8-IRIS



21-DOUBLE WEDDING RING



F-THE LONE STAR



100-STAR OF BLUEGRASS



80-APPLE BLOSSOMS



83-COUNTRY GARDENS

Shoo Fly

121

SAVE THIS WRAPPER

THERE IS A VALUABLE QUILT PATTERN ON THE REVERSE SIDE.

NOTE — Patterns for quilts shown on this wrapper and in our catalog may be ordered at a saving with the coupon which is printed below.

1 lb. 3 oz.

ONE SEAMLESS SHEET

FULL QUILT SIZE - 81 BY 96 INCHES

MOUNTAIN MIST

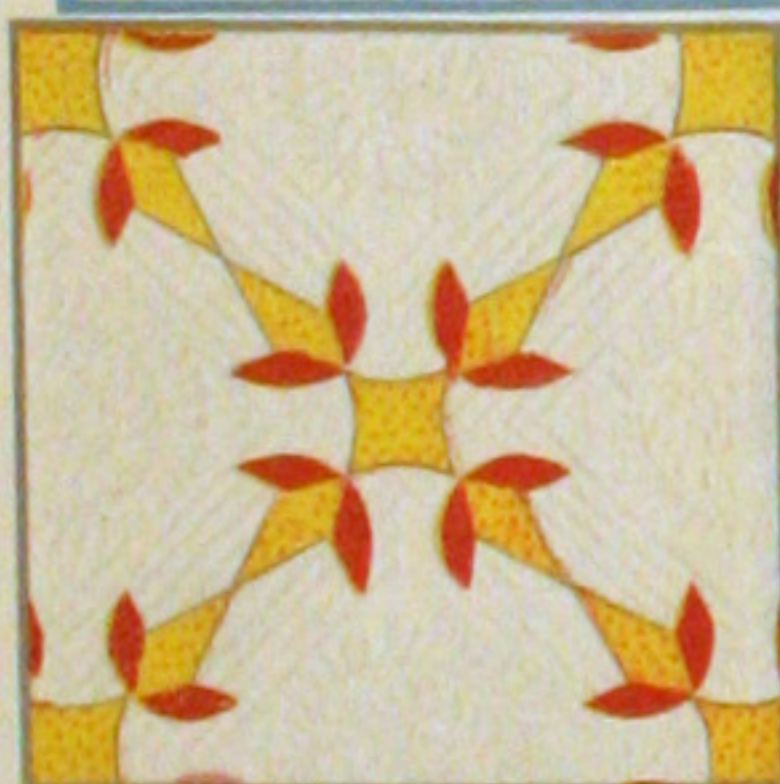
REG. U.S. PAT. OFF. AND IN CANADA

NEEDLE-EASY "GLAZENE"™ ALL COTTON FILLING

Uniform in Thickness • Does Not Stretch Thin • Makes a Quilt That Will Wash Beautifully

THE STEARNS & FOSTER COMPANY CINCINNATI OHIO 45215

ALL COTTON
100% NEW MATERIAL
OHIO REGISTRY No. 52



23-TURKEY TRACKS



8-NEW YORK BEAUTY



29-DOGWOOD



30-BOSTON COMMONS



64-COUNTRY LANES



SHOO FLY

Pattern No. 121 of the Mountain Mist Series
(A Pieced Quilt)

The simplicity of a quilt is often what makes it beautiful. This pieced quilt is one of many which can be made either by hand or on your home sewing machine. The color may be of your own choosing. No matter what the decor of your room may be, it will be suitable. The combination of squares and triangles will look well in modern as well as early American settings.

DIRECTIONS

1. First make actual size patterns from the Parts as numbered. To do this, trace the outlines through thin paper, paste onto cardboard or the smooth side of sandpaper, and cut out exactly along the pencilled lines. Or, transfer with carbon paper. Sandpaper patterns, placed rough side down on the goods will not slip in the marking. Mark the Part number on each pattern.

2. If there is any doubt about the fastness of the colors, or if there is a possibility of shrinkage, first wash and iron the cloth. If the top of the quilt is washed before making the quilt, also shrink the material for the backing.

3. Mark the required number of Parts in color as listed in the Yardage Chart. Mark on the wrong side of the goods. Space the outlines far enough apart to allow for seams — ($\frac{1}{4}$ " or less) when the pieces are cut. DO NOT CUT ALONG THESE LINES, but a seam's width outside. The lines remain to show where to join the pieces. From the remaining material, cut 1" bias strips for binding the quilt.

4. From the white material cut two strips 80" x 5" for the end borders, and two strips 91" x 5" for the side borders. Be sure to allow for seams since these are finished dimensions. From the remaining material, cut six strips which are 91" x $1\frac{3}{4}$ " plus seams for the lengthwise inner borders. Next cut 56 strips which are $8\frac{1}{2}$ " x $1\frac{3}{4}$ " plus seams for the white strips between the blocks. From the remaining material, cut Parts 1 and 3 in white. Fasten each group of parts with a single stitch so that they will be ready for use and not lost.

5. You are now ready to piece the blocks of the quilt. There will be 63 blocks similar to the block shown on the pattern. To assemble this block, join one Part 1 in color

with one Part 1 white on the diagonal seam forming a square. Join two of these squares with one Part 3, white between them. Next join two Part 3 with one Part 2 between them. Make two more squares of color and white, join with Part 3; and, following the Diagram of the block join them all together. Nine of these Blocks are joined with the $8\frac{1}{2}$ " x $1\frac{3}{4}$ " strips to form a long panel. Seven of these panels are needed to complete the quilt. They are joined with the lengthwise white strips to complete the design of the quilt. Finish the entire top by adding the end and side border strips which are 5" wide.

QUILTING SUGGESTIONS

The blocks of this quilt are small and leave very little space for fancy quilting. We suggest that you use a yard stick and continue the lines of the pieces of the blocks across the white inner and outer borders. Each piece of the block should be outlined by quilting so that the design of the quilt will be shown on the back as well as the front of the quilt. See Diagram of Block for full suggestions.

DIAGRAM OF QUILT
(Finished Dimensions)

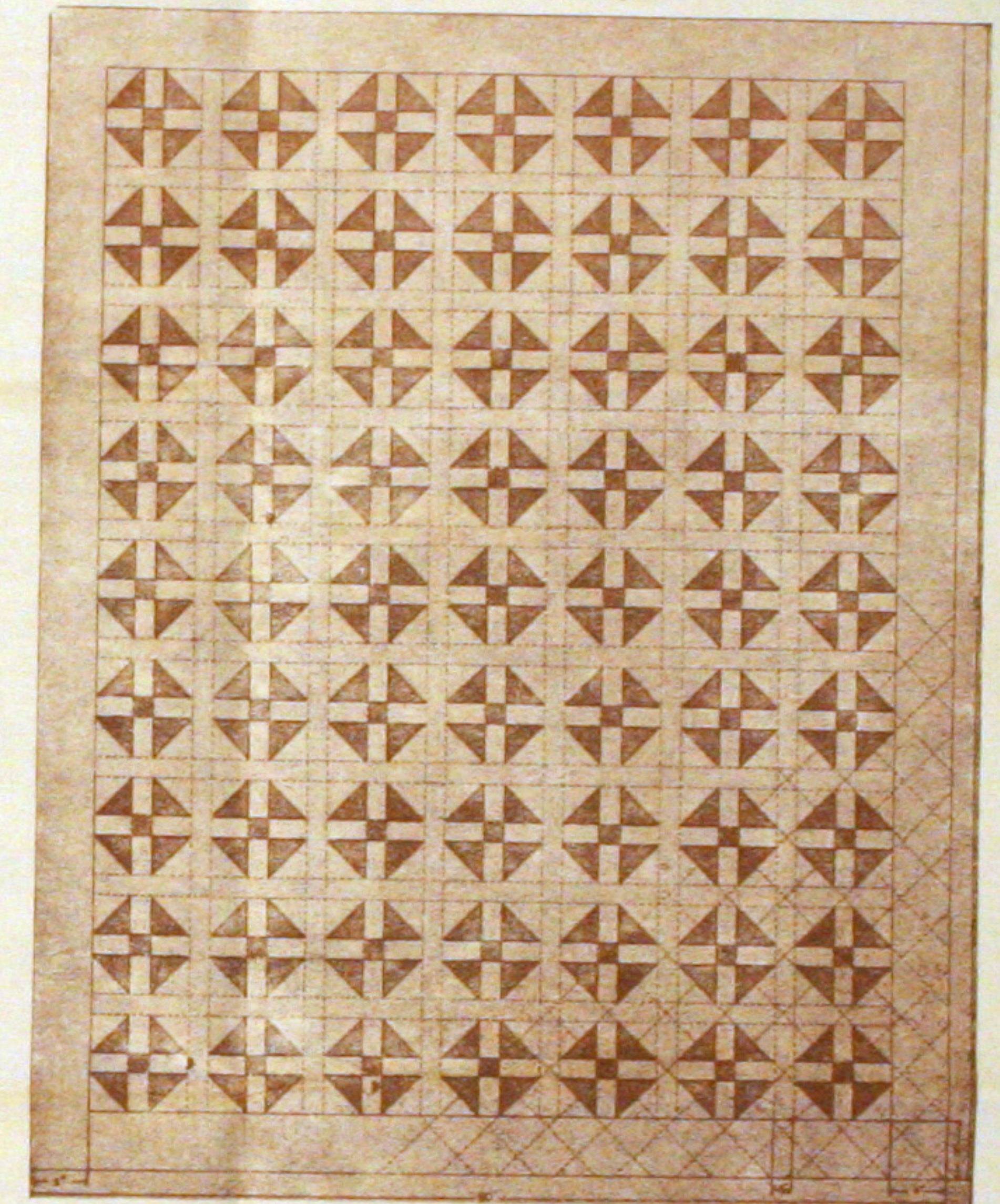
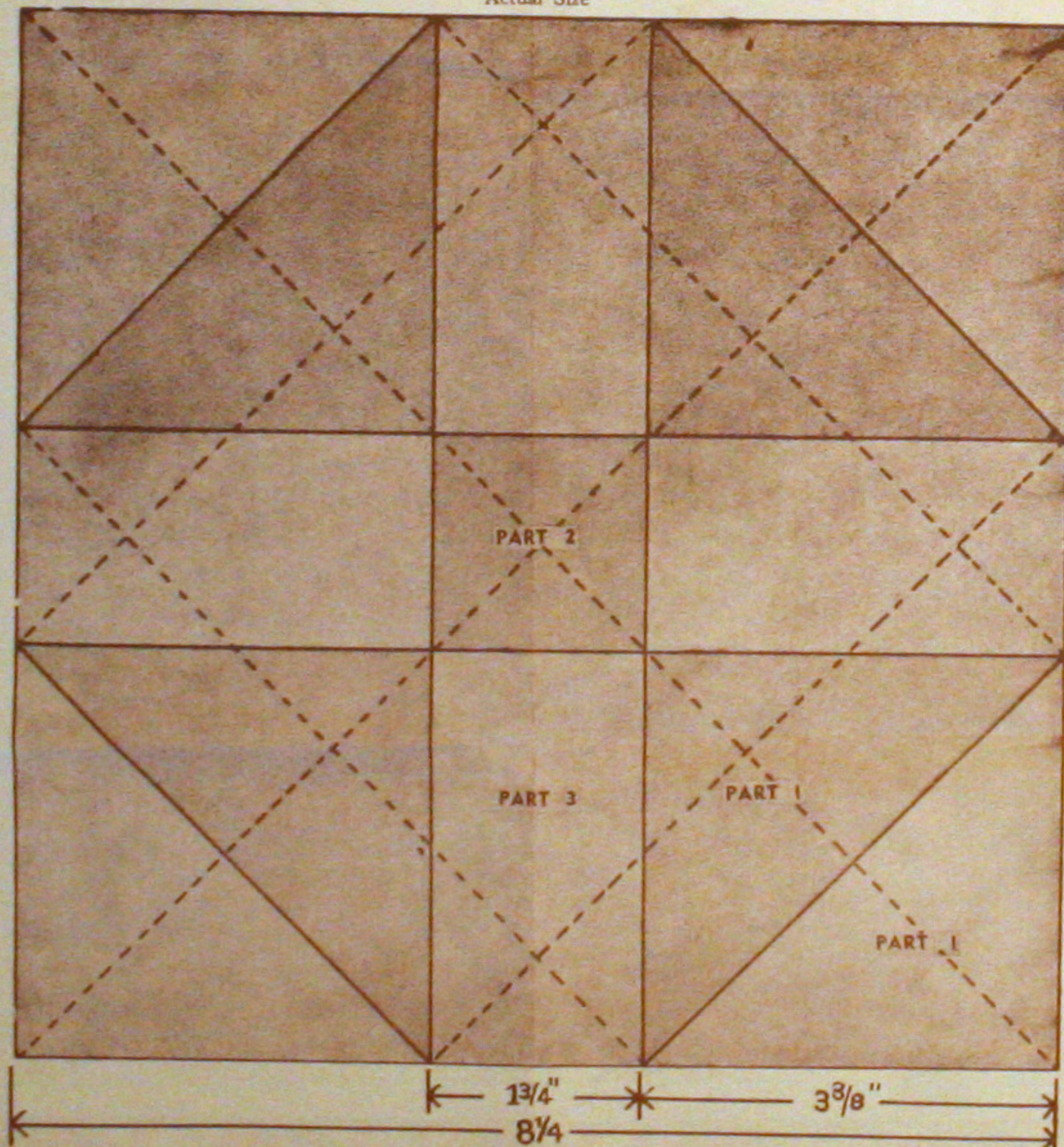


DIAGRAM OF BLOCK
Actual Size



NOTICE
Wrappers for Cotton Batting having working patterns for Quilts printed thereon are fully protected and are exclusive with The Stearns & Foster Company.
ALL RIGHTS RESERVED
THE STEARNS & FOSTER COMPANY
Lackland, Cincinnati, Ohio

YARDAGE CHART
(Material 36 inches Wide)

PLAIN COLORS	3 $\frac{3}{4}$ Yards
Part 1 — 252 Pieces	
Part 2 — 63 Pieces	
WHITE	16 Yards
Part 1 — 252 Pieces	(4 $\frac{3}{4}$ Yards)
Part 3 — 252 Pieces	
56 Strips $8\frac{1}{2}$ x $1\frac{3}{4}$ inches to join blocks	
2 Strips 91 x $1\frac{3}{4}$ inches to join panels of blocks	(3 Yards)
2 Strips 80 x 5 inches for end outer borders	
2 Strips 101 x 5 inches for side outer borders	
Material for Back	(8 $\frac{5}{8}$ Yards)