



20—OHIO ROSE



75—DRESDEN PLATE



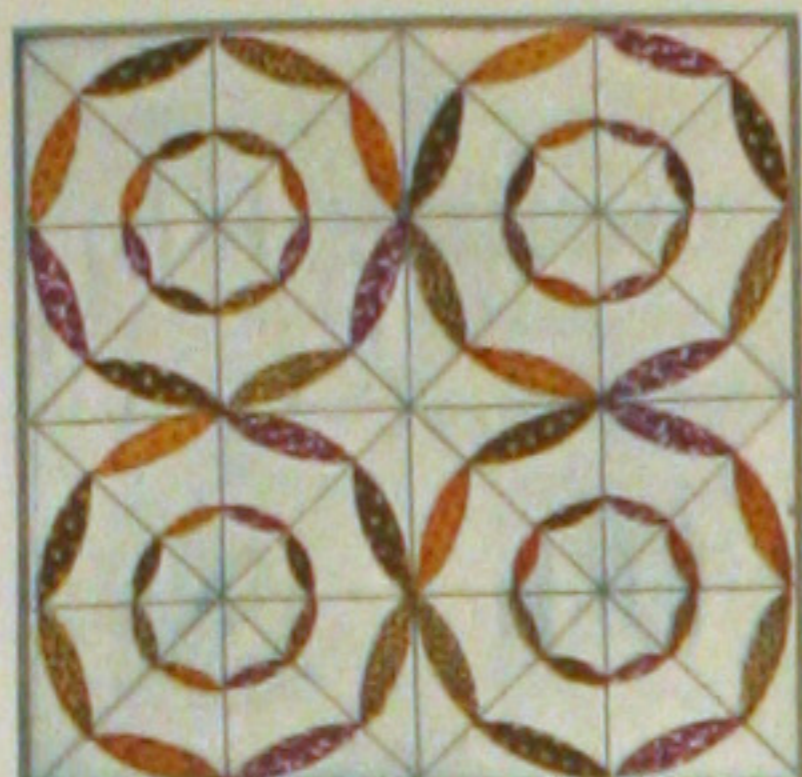
76—DAISY CHAIN



104—COLUMBINE



74—FLORAL CAMEO



94—ODDS AND ENDS



112—POPPY WREATH

HOW TO ORDER PATTERNS

Printed on the other side of this wrapper you will find one of our famous quilt patterns. If it does not suit your needs we will be glad to send you your choice of any of the patterns illustrated on this wrapper or in our free catalog at a cost of 20¢ each, with this coupon. The regular price of our patterns is 35¢.

Address: **THE STEARNS & FOSTER CO., QUILT DEPARTMENT, Cincinnati 15, Ohio, U. S. A.**

My Name _____
 Street and Number _____
 City and State _____

QUILT PATTERN COUPON

THIS OFFER SUBJECT TO WITHDRAWAL WITHOUT NOTICE

A—TUMBLING BLOCKS

102—DEW DROP

70—STAR BRIGHT

25—GRANDMOTHER'S FLOWER GARDEN



119—DADDY HEX



26—MARTHA'S VINEYARD



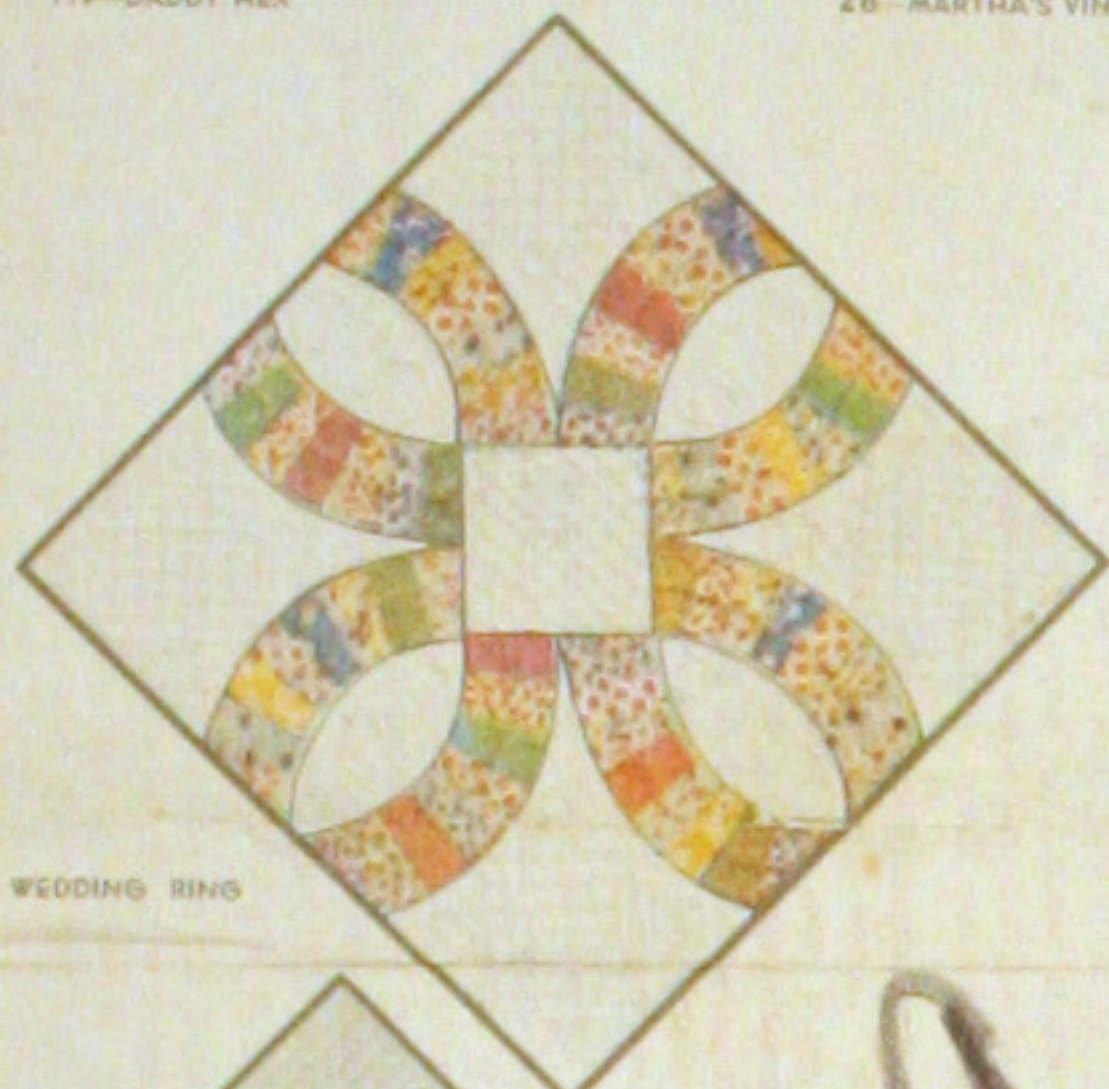
38—HOMESPUN



P—SUNFLOWER



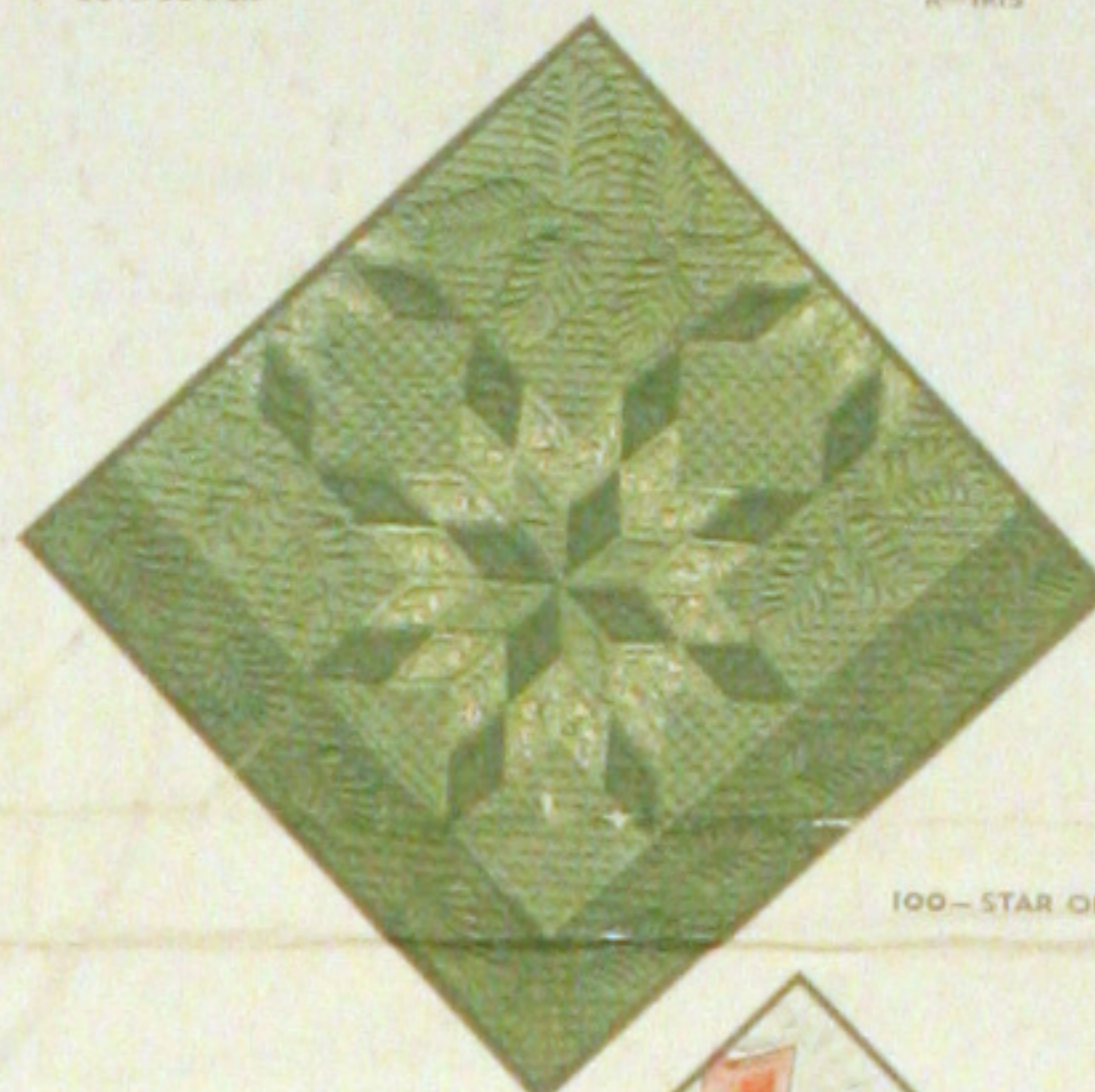
R—IRIS



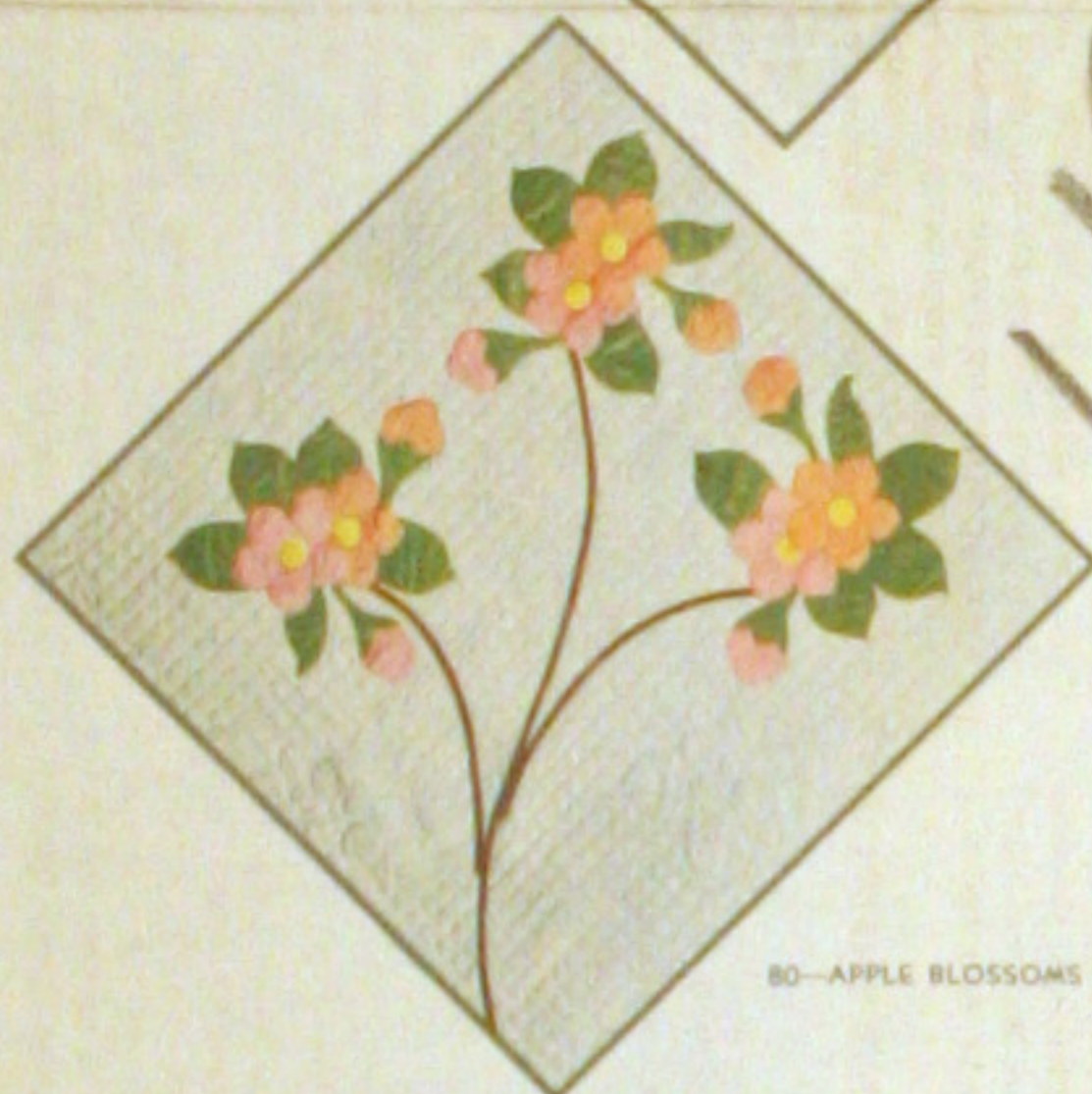
21—DOUBLE WEDDING RING



F—THE LONE STAR



100—STAR OF BLUEGRASS



80—APPLE BLOSSOMS



83—COUNTRY GARDENS

19

Save THE QUILT PATTERN which is printed on reverse side of this wrapper. You may obtain the pattern for any quilt design illustrated by using the coupon which is printed in the lower right-hand corner of this wrapper.

Great Grandmother's Quilt 122

1 lb. 3 oz.

ONE SEAMLESS SHEET

FULL QUILT SIZE - 81 BY 96 INCHES

MOUNTAIN MIST

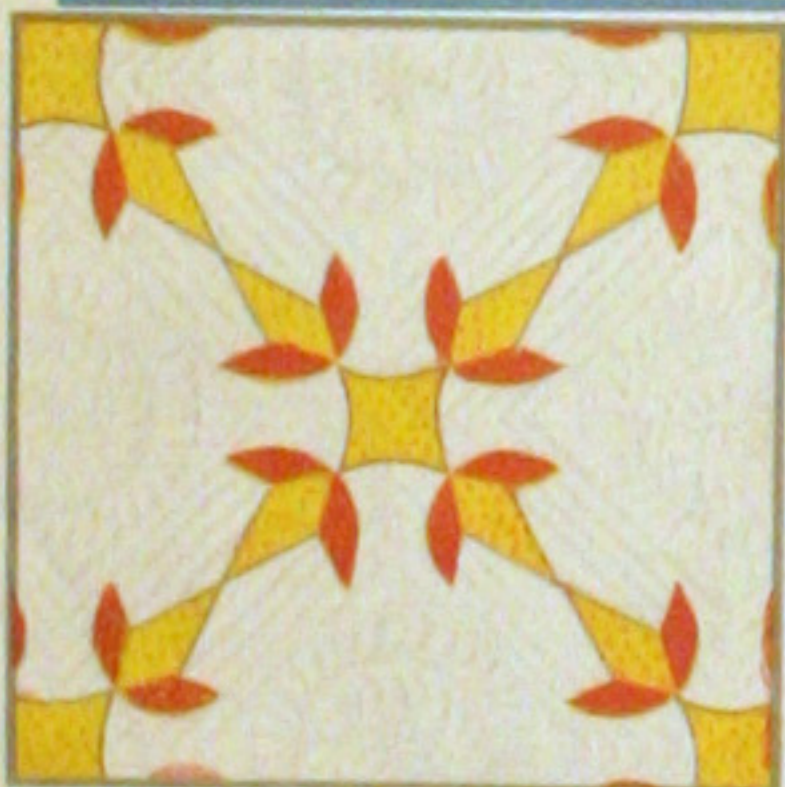
REG. U.S. PAT. OFF. AND IN CANADA

NEEDLE-EASY "GLAZENE" FILLING for QUILTS

Uniform in Thickness • Does Not Stretch Thin • Makes a Quilt That Will Wash Beautifully

THE STEARNS & FOSTER COMPANY LOCKLAND, CINCINNATI OHIO

ALL COTTON 100% NEW SAF MATERIAL OHIO REGISTRY No. 52



23—TURKEY TRACKS



X—NEW YORK BEAUTY



29—DOG WOOD



30—BOSTON COMMONS

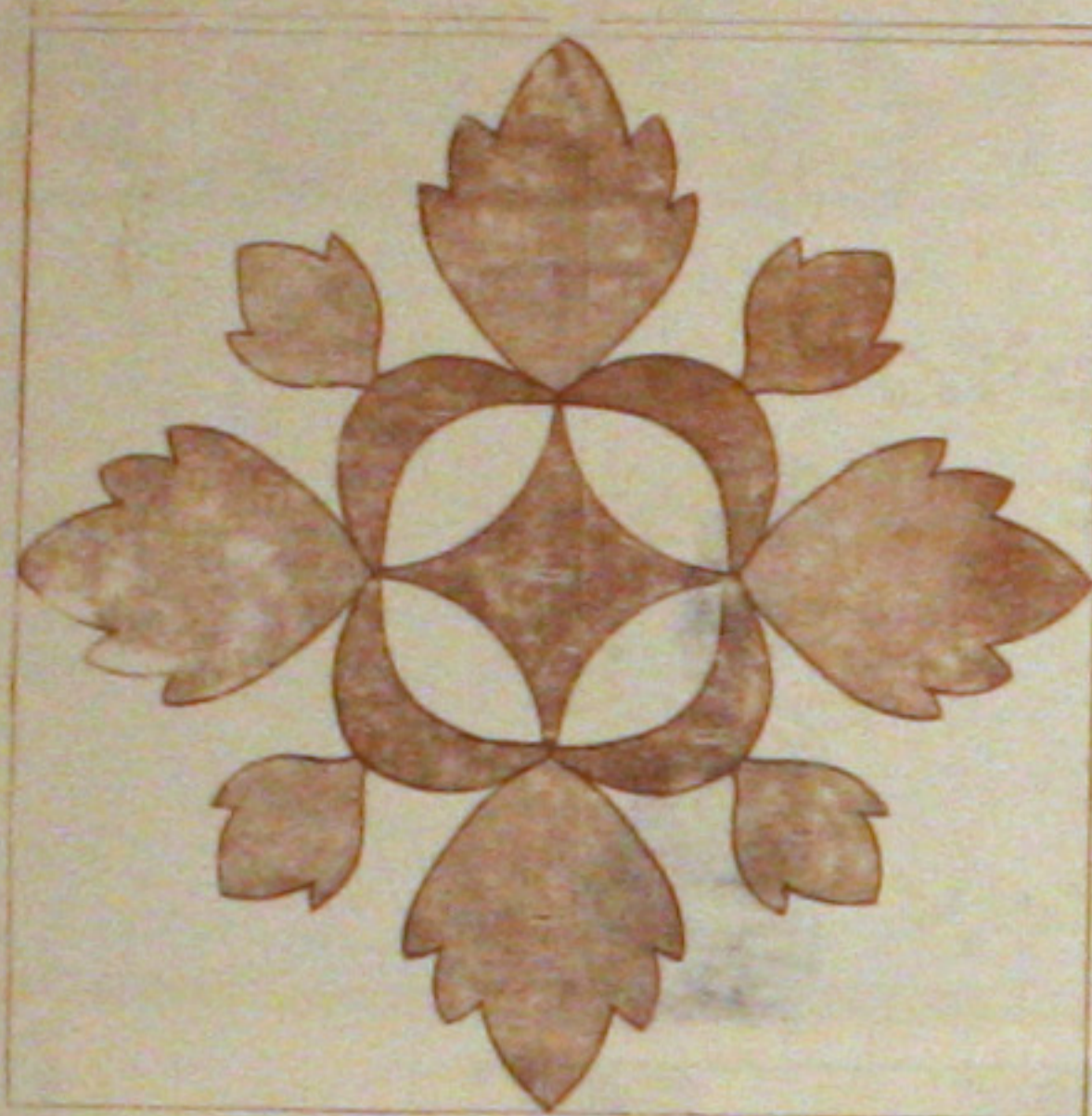


64—COUNTRY LANES



W-55-8661

DIAGRAM OF BLOCK
(1/4 Size)



GREAT GRANDMOTHER'S QUILT

Pattern No. 122 of the Mountain Mist Series

(An Appliqued Quilt)

The story goes that this quilt was started before our Great Grandmother left France, and finished after she came to this country. It was her Bridal Quilt. We have searched for a name for it, but find nothing quite like it. The original quilt was made of homespun material—unbleached muslin as a background with bright red and green for the design. The materials have held very well, except for the green. It is badly worn but still very beautiful.

DIRECTIONS

1. First make actual size patterns for all the Parts as numbered. To do this, trace the outlines through thin paper, paste onto

cardboard or the smooth side of sandpaper, and cut out exactly along the penciled lines. Or transfer directly on cardboard with carbon paper. Sandpaper patterns, placed rough side down on the goods, will not slip in the marking. Mark the Part number on each pattern.

2. If there is any doubt about the fastness of the colors, or if there is a possibility of shrinkage, first wash and iron the material. If the top of the quilt is washed before marking the quilt, also shrink the material for the back of the quilt.

3. Mark the required number of Parts on each color as listed on the Yardage Chart. Mark on the right side of the material and space the outlines far enough apart to allow for seams (3/8" or less) when the pieces are cut. **DO NOT CUT ALONG THESE LINES**, but a seam's width outside. The lines remain to show where to turn under the edges before basting. Cut out and arrange in color groups. Fasten with a single basting stitch so that they will be ready for use.

4. Using the white background material, cut two strips 106" x 5" for the side borders and two strips 70" x 5" for the end borders. Do not forget to allow for seams on these strips. Next cut two strips 96" x 8" for the lengthwise inner borders nine strips 18" x 8" for the fill-in inner borders. From the remaining material cut 12 blocks which are 18" square. Again, do not forget to allow for seams. These are finished dimensions.

5. You are now ready to assemble your quilt. There will be twelve blocks on which the design is applied. Find the center of the 18" block by folding in half—end to end, and again in half—end to end. Mark the center of these folds lightly with

pencil. Baste Part 1 (red) into position with the points following the creases of the block. With Part 1 as a guide add Part 2 between the points. From the union of the four Part 2s, place Part 3 (green) and baste to the background. Fold the block diagonally and crease gently. On these soft creases place the four Part 4s (green) as shown on the Diagram of the block.

6. Before applique work, we suggest that you baste under the seams of all the parts of the design. Clip the curved seams so that they may be turned under evenly. Applique with a fine shadow stitch, using the same color thread as the piece to be applique.

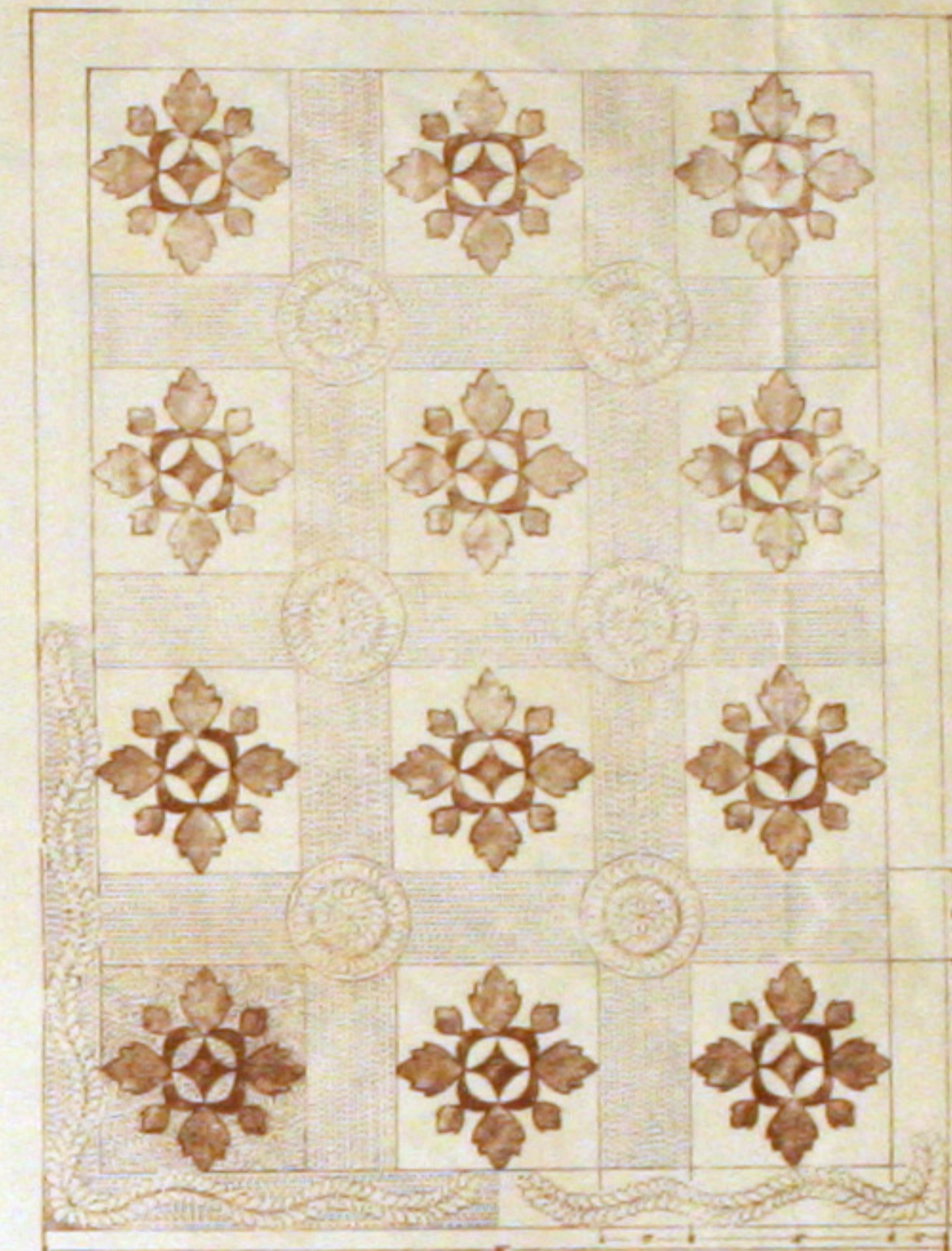
7. When the twelve blocks have been applique, make lengthwise panels by joining four blocks with 18" x 8" strips between. Three of these panels are needed for the quilt. Join the entire top by joining these long panels with the 96" x 8" inner borders. Complete with the 5" outer borders.

QUILTING SUGGESTIONS

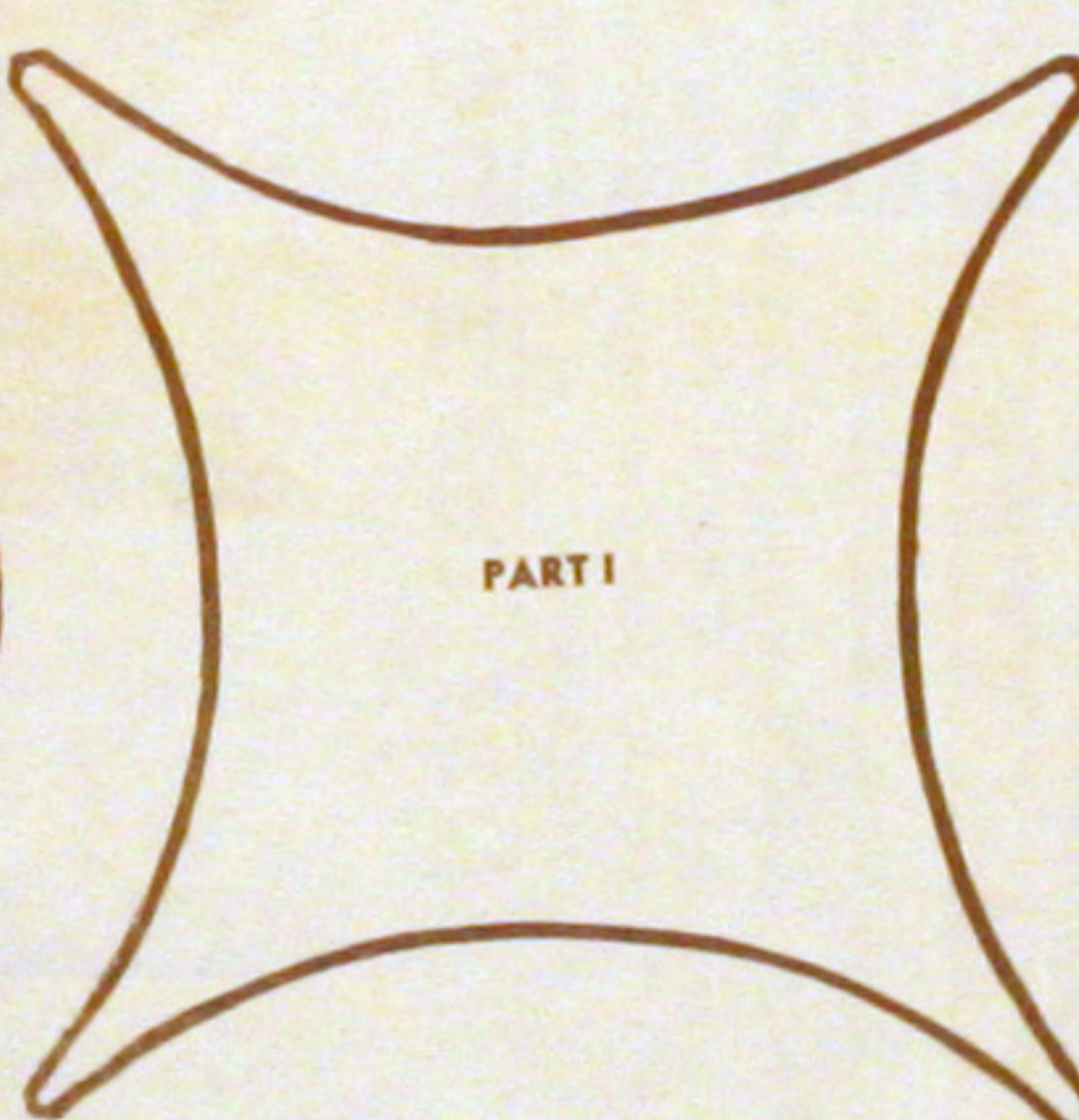
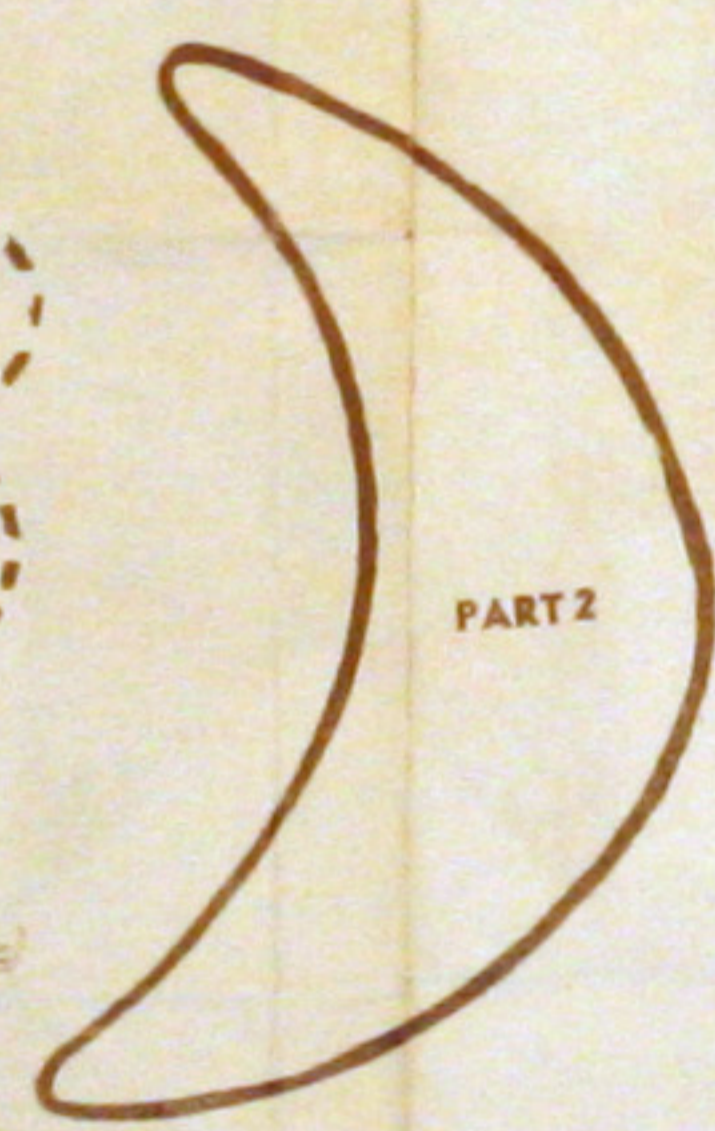
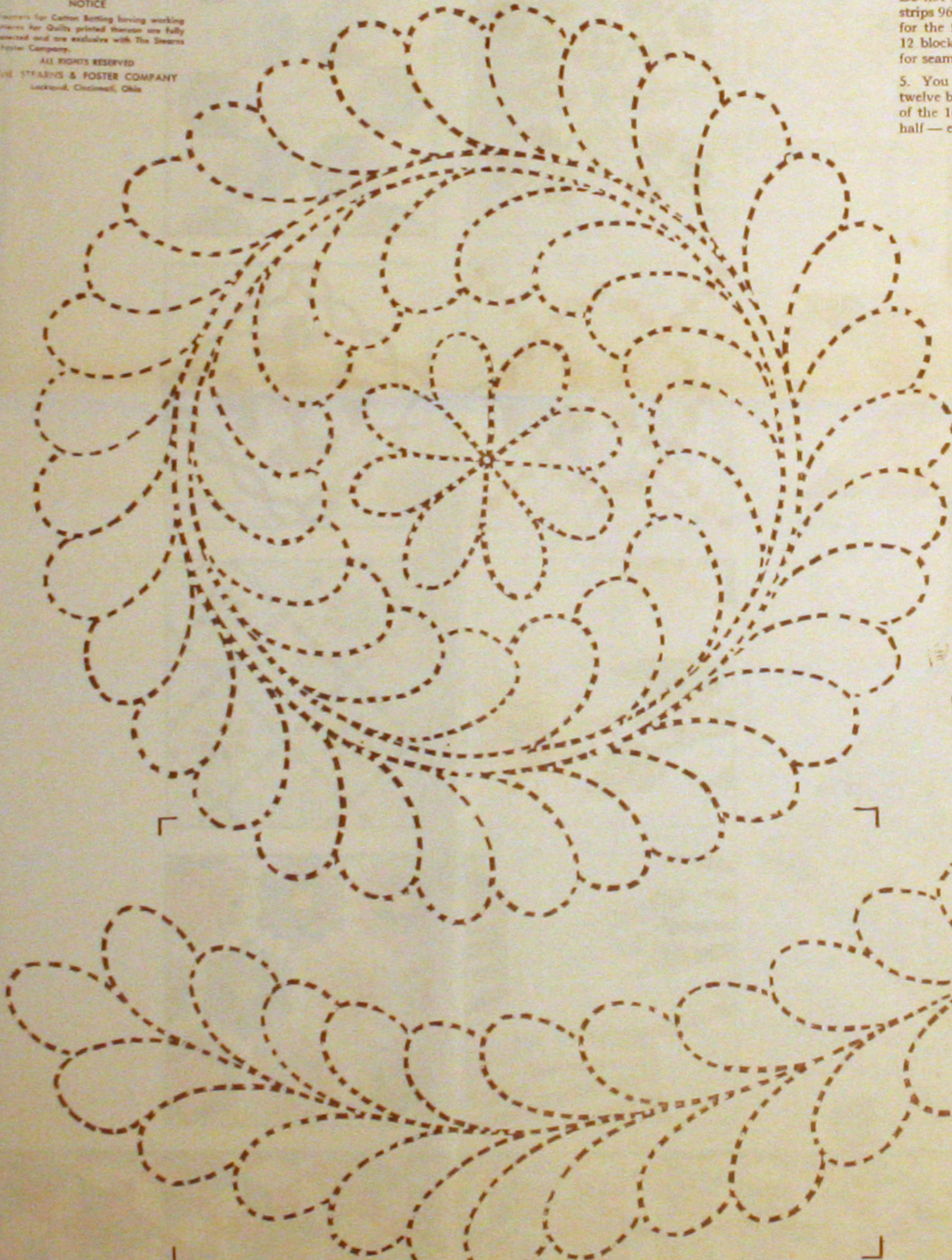
You are now ready for the final step—the quilting. We have given you our suggestions for quilting this quilt which are the same as the original quilt. You may make your own perforated marking pattern by following the outlines of these designs with an unthreaded needle on your sewing machine. Use a fine sandpaper to rub over the back of these perforations to remove the excess paper. Colored chalk may be used to dust through these perforations to mark the quilt. Strengthen these markings with a well sharpened soft pencil. Do not mark too heavily.

The blocks are quilted by following the design of the applique until the lines meet the edge of the block as shown on the Diagram of the quilt. The borders are all straight line quilting to back the design of the feather circle and the feather border. When the quilting is complete, clip off any excess cotton or material and bind with 1" bias strips of the white material.

DIAGRAM OF QUILT
Finished Dimensions



NOTICE
Patterns for Cotton Sewing having working patterns for Quilt printed thereon are fully protected and are exclusive with The Stearns & Foster Company.
ALL RIGHTS RESERVED
THE STEARNS & FOSTER COMPANY
Lockland, Cincinnati, Ohio



YARDAGE CHART
(Material 36 inches Wide)

RED	7 3/4 Yards	WHITE	6 1/2 Yards
Part 1—12 Pieces		2 Strips 106" x 5"	
Part 2—48 Pieces		2 Strips 70" x 5"	
GREEN	2 3/4 Yards	2 Strips 96" x 8"	
Part 3—48 Pieces		9 Strips 18" x 8"	
Part 4—48 Pieces		12 Blocks 18" x 18"	
MATERIAL FOR BACK		6 1/2 Yards	

